

Expertise

Protocol number: 46192678
Order No. / Reference: 26151877
Inspection date: 22 May 2026

Manufacturer: Mercedes-Benz

Model: Vito 116 CDI Tourer Extralang Aut. PRO

VIN: W1VVLGFZ3T4559141



Vehicle details

Manufacturer / Type / Model / Equipment

Mercedes-Benz Vito 116 CDI Tourer Extralang Aut. PRO

Vehicle Identification number W1VVLGFZ3T4559141

Mileage (Read) 12,628 km

First registration 14 Aug 2025

Number of holders 1

Power / Engine displacement 120 kw / 1,950 ccm

Fuel type / Cylinder Diesel / 4

Gearbox / Number of gears Automatic / 9

Type of drive Rear drive

Type of vehicle Van

Colour / colour code Obsidian black metallic

Doors / Seats 5 / 9

Upholstery type Cloth

Colour of upholstery Black-Anthracite

Type of use rental car



Vehicle details

Maintenance booklet / proof	Non-existent	Next maintenance in	432 Tag(e)
Key is / should be	2 / 2	FZG documents	ZB#2 (B) was available (copy), ZB#1 (S) was not available.
		Letter No.	HN436277
Previous damage / Accident	None detectable	Repainting	None detectable
Inspection conditions	sufficient	Lifting equipment / pit	yes
Test drive	Not performed	Engine function test	Performed
Manufacturer key number/ type code number	2222 / ABB 07004		
Emission standard	EURO6;WLTP;EB;PI/CI;M, N1, N2	fine dust sticker	
Permitted total weight	3,100 kg	Empty weight	

Tyres

Mounted tyres

#	Tyre size	Type of tyre	Manufacturer	Tread depth
1)	225/55 R17 109H	All-season tyres on Steel rim with wheel cover	Goodyear	7mm / 7mm
2)	225/55 R17 109H	All-season tyres on Steel rim with wheel cover	Goodyear	7mm / 7mm

Legend: Tread depth information for the left tire is listed first, for the right tire it is listed second on the axle in the direction of travel.

TÜV SÜD Auto Partner GmbH
Wiesenring 2
04159 Leipzig

Inspection location
ARS Altmann AG Automobillogistik
Lilienthalstraße 2
29693 Hodenhagen



Equipment



Standard equipment

- ABS, ESP, ASR, EBV, BAS
- Passenger side airbag
- Airbag: Thorax airbag - Pelvis side airbag for front passenger
- Active Lane Keeping Assist
- Increased load capacity to 3,100 kg
- Outdoor temperature display
- Battery: fleece battery 12 V / 92 Ah
- Hill start assist
- third brake light
- COC documents
- Roof cladding
- Electronic tachometer
- Driving light assistant
- Misfueling protection
- Left/right window in SW/ Cargo area sliding door
- Front right window fixed in SW/ cargo area sliding door
- electric parking brake
- Generator management
- Transmission: 9G-TRONIC
- Seatbelt warning device for driver's seat
- Lockable glove box
- HOLD function
- Interior mirror
- Intelligent speed assistant
- Child safety locks on doors in the passenger compartment
- Instrument cluster with color display
- Communication module (LTE) for digital services
- Large fuel tank, approx. 70 liters
- Paint finish: Solid color paint
- Steering wheel adjustable for tilt and height
- Headlight range control
- Navigation accessories: Live Traffic Information
- Package: Aerodynamics
- Breakdown management
- Radio: Digital Radio DAB
- Radio accessories: 2-way speakers front + rear.
- Tires: 225/55R17
- Tires: Premium protection tires (3 years)
- Tire pressure monitoring
- Wheels: Steel rims 6.5 J x 17
- Sliding door: Active stop
- Crosswind Assist
- Seats: 3-seater bench, 1st row, passenger compartment
- Seats: Rear seat mounting with quick-release fasteners, 2 rows of seats
- Start-stop function
- Blind Spot Assist
- Ambient lighting in the exterior mirrors
- First aid kit
- Warm air duct to the passenger compartment
- Screw-in towing eye front/rear
- Driver's side airbag
- Airbag: Thorax-pelvis-sidebag for driver
- Airbag: Windowbag for driver and front passenger
- ATTENTION ASSIST
- Electrically adjustable and heated exterior mirrors, left and right
- Fixing points in the roof frame
- Brake assist, active
- Brake lights, adaptive
- Front cupholder
- Diesel particulate filter and SCR
- Entry grab handle for the cargo area sliding door
- Chassis: Comfort chassis
- Window in rear door/tailgate
- Front left window fixed in SW/ cargo area sliding door
- Electric windows, driver/passenger
- Generator 14 V / 200 A
- Speed limit 210 km/h
- Seatbelt warning device for front passenger seat
- Grab handle in the rear
- Boot lid
- Interior lights in the rear
- Interior trim, high-end finish
- Passive child detection in the vehicle
- Tempmatic controlled air conditioning
- Comfort closing
- Headrests (2), front
- Plastic floor TPO passenger compartment
- leather steering wheel
- Steering wheel: Multifunction steering wheel
- Mercedes-Benz emergency call system
- Navigation: Navigation pre-installation
- Package: BlueEFFICIENCY
- Upholstery: Caluma fabric, black
- Radio: MBUX multimedia system
- Full wheel cover
- Tires: Tires without specified make
- Tires: Summer tires
- Wheels: Premium complete wheel protection
- Headlights: halogen technology
- Sliding door on the right, cargo/passenger compartment
- electromechanical power steering
- Seats: 3-seater bench, 2nd row
- Seats: Passenger seat cushion depth adjustment
- Seats: Driver's seat cushion depth adjustment
- 12V socket
- Ambient lighting tailgate
- Updates to the intelligent speed assistant
- Pre-installation for Remote Services Plus
- Warning triangle



- ASSYST maintenance interval indicator
- Heat-insulating glass
- Auxiliary heater, electric

- Immobiliser
- Central locking with radio remote control
- Car registration

Extra equipment

- Towing capacity 2500 kg
- Tinted rear windows, black glass
- Semi-automatic air conditioning, TEMPATIC in the rear
- Navigation
- Package: Winter Package (heated windscreen - heated seats for driver and front passenger - pockets on driver and front passenger seatbacks - heated multifunction steering wheel)
- Seat: Lumbar support driver's seat
- Seats: Comfort driver's seat
- Cruise control

- Towbar (detachable ball head)
- Generator 14 V / 250 A
- Paint finish: Metallic
- Package: Parking package with reversing camera
- Tires: All-season tires
- Electric suction fan, power level 5
- Sliding door on the left (cargo area)
- Key: Multi-button radio remote control
- Seats: Passenger seat, two-seater
- Bumpers painted in body color
- Traffic Sign Assistant

Brief expert findings

Documents submitted	At the time of the inspection, the vehicle registration certificate Part 2 (title) was available, but the vehicle registration certificate Part 1 (document) was not. (Copy)
VIN comparison	The vehicle identification number (VIN) was read from the vehicle and its conformity with the submitted documents was confirmed by the undersigned during the inspection.
Inspection	The inspection conditions were sufficient for the assessment of the vehicle. Lifting equipment and/or a pit were available for examining the vehicle.
Test drive	No test drive/shunting maneuver was carried out during the inspection of the vehicle.
Engine function test	An engine test run was performed.

Value reducing factors

No.	Component group	Description
1	Body	Underbody panelling - Scratched - Replace
2	Front bumper	Front bumper - Scratch(es) - Smart repair
3	Rear bumper	Rear bumper - Scratch(es) - Paint
4	Door - front right side	Door - Dent / paintcoat damage - Repair and paint

Wear and tear

No.	Component group	Description
1	Trim / covers	Boot lid - interior trim - Scratch(es) - No deduction
2	Door - front left side	Door edge - Scratch(es) - No deduction
3	Wing mirror - right side	Mirror housing - Scratch(es) - No deduction
4	Vehicle glazing	Windscreen - Stone chips - No deduction
5	Bonnet	Bonnet - Stone chips - No deduction
6	Sliding door - left side	Sliding door - dent(s) - No deduction
7	Sliding door, right	Sliding door - dent(s) - No deduction
8	Door - front left side	Door - dent(s) - No deduction

The vehicle shows signs of wear and tear commensurate with its age and use.



Paint coat thickness measurement

Roof	89 µm	Roof rail - left side	100 µm
Roof rail - right side	117 µm	Boot lid / rear door	85 µm
Mudguard - left side	113 µm	Mudguard - right side	113 µm
Bonnet	101 µm	Side panel - rear left side	118 µm
Side panel - rear right side	109 µm	Door - rear left side	101 µm
Door - rear right side	109 µm	Door - front left side	114 µm
Door - front right side	107 µm		

Order/Scope of Order

An order was placed to prepare a sales report for the described vehicle. This report includes the following:

- Description of key vehicle information
- Documentation of equipment features
(*Delivery by third-party service providers*)
- Documentation of damage, defects, missing parts
- Documentation of prior damage, unrepaired prior damage, repainting
- A brief visual or functional inspection of the equipment details, if possible.
(*Functional testing of driver assistance systems is not included in the scope of services!*)
- a photographic documentation of the vehicle

Basis for the order

This product is based on the guidelines for vehicle returns and valuations published by Alphabet Fleet GmbH. The expert makes the specific findings in each individual case objectively, within the framework of the prescribed standards, based on their own expertise.

The vehicle inspection takes place in a fully assembled, unassembled state.

Damage or defects that can only be detected during disassembly/diagnostic work or through further investigation remain within the realm of prognostic risk. An increased risk exists due to concealed defects caused by fraudulent misrepresentation and which were not identifiable by the expert.

Damage or defects resulting from normal use or wear and tear of the vehicle will be accepted in accordance with the applicable standard.

There was no explicit identification or monetary consideration of the expected features within the product.

Features which, in their nature and extent, slightly exceed normal use but do not constitute unacceptable damage, will be documented and indicated as signs of wear, if applicable.

Damage or defects that, according to the applicable standard, can no longer be attributed to normal use or wear and tear are listed under "Value Reducing Factors" in the product description.

Depending on the product specification, a monetary ID can be provided. If this takes place, the costs can be 100% d or pro rata depending on the vehicle's age and mileage.

Previous damages

No apparent prior damage that had been repaired could be found on the vehicle.



Figure 1: Diagonal front (left)



Figure 2: Diagonal front (right)



Figure 3: Diagonal rear (left)



Figure 4: Diagonal rear (right)

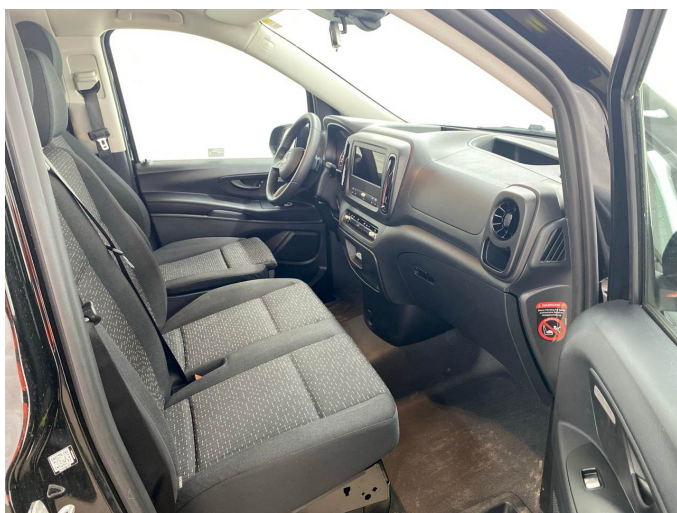


Figure 5: Interior - front



Figure 6: Interior - rear



Figure 7: Instrument cluster



Figure 8: Instrument panel



Figure 9: Interior 360° view



Figure 10: Cargo area



Figure 11: VIN



Figure 12: Mounted tyres



Figure 13: Mounted tyres

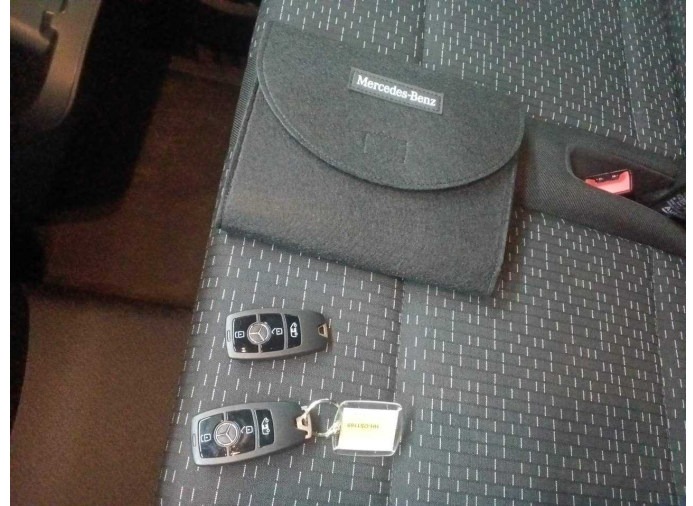


Figure 14: Documents



Figure 15: Navigation



Figure 16: Misc.



Figure 17: Misc.

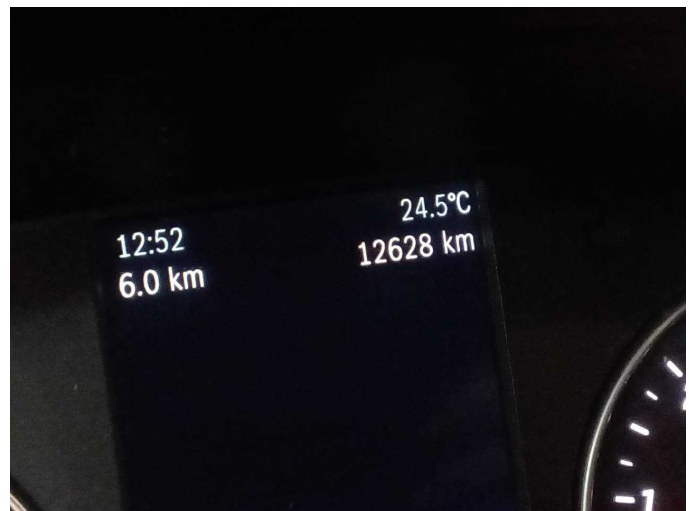


Figure 18: Misc.



Figure 19: Misc.

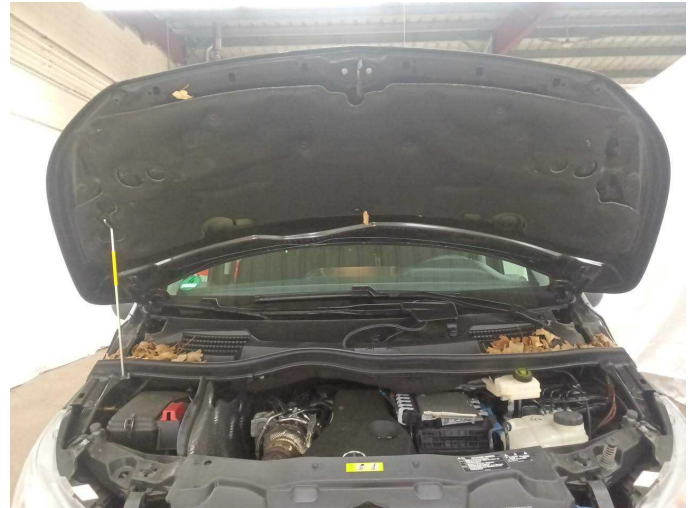


Figure 20: Misc.



Figure 21: Misc.



Figure 22: Misc.



Figure 23: Misc.



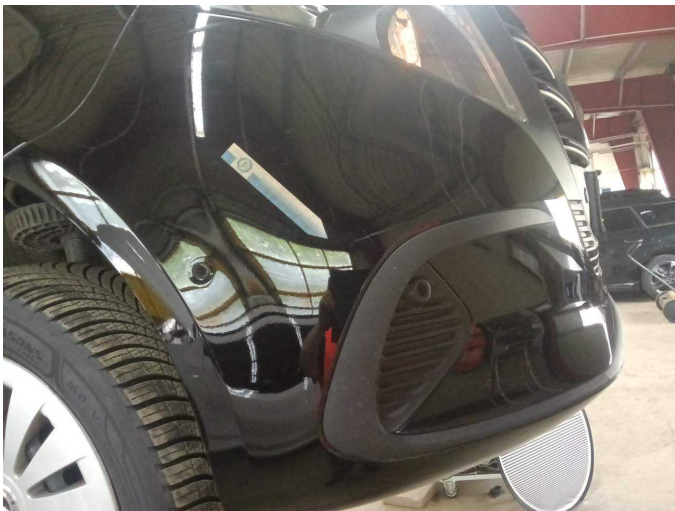
Damage 1: Body: Underbody panelling - Scratched - Replace



Damage 1: Body: Underbody panelling - Scratched - Replace



Damage 1: Body: Underbody panelling - Scratched - Replace



Damage 2: Front bumper: Front bumper - Scratch(es) - Smart repair



Damage 2: Front bumper: Front bumper - Scratch(es) - Smart repair



Damage 3: Rear bumper: Rear bumper - Scratch(es) - Paint



Damage 3: Rear bumper: Rear bumper - Scratch(es) - Paint



Damage 3: Rear bumper: Rear bumper - Scratch(es) - Paint



Damage 4: Door - front right side: Door - Dent / paintcoat damage - Repair and paint



Damage 4: Door - front right side: Door - Dent / paintcoat damage - Repair and paint



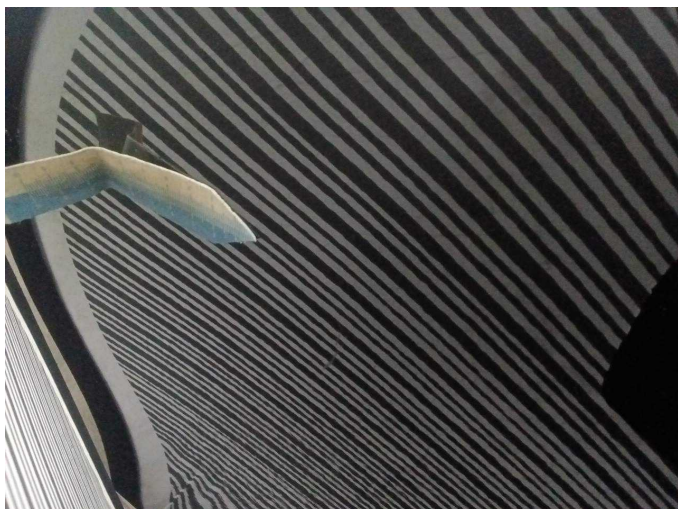
Damage 4: Door - front right side: Door - Dent / paintcoat damage - Repair and paint



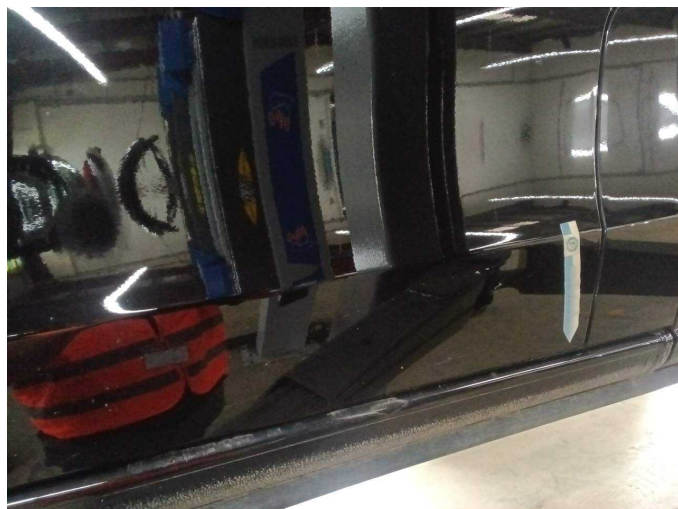
Damage 4: Door - front right side: Door - Dent / paintcoat damage - Repair and paint



Wear and tear 8: Door - front left side: Door - dent(s) - No deduction



Wear and tear 8: Door - front left side: Door - dent(s) - No deduction



Wear and tear 8: Door - front left side: Door - dent(s) - No deduction



Wear and tear 8: Door - front left side: Door - dent(s) - No deduction