

## Expertise

Protocol number: 46288493  
Order No. / Reference: 26487887  
Inspection date: 2 Jul 2026

Manufacturer: Volkswagen

Model: Golf Variant 2.0 TDI SCR DSG Life

VIN: WVVZZZCD4PW518832



### Vehicle details

#### Manufacturer / Type / Model / Equipment

Volkswagen Golf Variant 2.0 TDI SCR DSG Life

<b>Vehicle Identification number</b>	WVVZZZCD4PW518832
<b>Mileage (Read)</b>	102,498 km
<b>First registration</b>	23 Nov 2022
<b>Number of holders</b>	1
<b>Next periodical technical inspection</b> (Report on hand)	10/2027

<b>Power / Engine displacement</b>	85 kw / 1,968 ccm
------------------------------------	-------------------

<b>Fuel type / Cylinder</b>	Diesel / 4
-----------------------------	------------

<b>Gearbox / Number of gears</b>	Automatic / 7
----------------------------------	---------------

<b>Type of drive</b>	Front drive
----------------------	-------------

<b>Type of vehicle</b>	Station wagon
------------------------	---------------

<b>Colour / colour code</b>	Deep Black Perleffekt (C9X)
-----------------------------	--------------------------------

<b>Doors / Seats</b>	5 / 5
----------------------	-------

<b>Upholstery type</b>	Cloth
------------------------	-------

<b>Colour of upholstery</b>	Grey-Black
-----------------------------	------------



## Vehicle details

<b>Maintenance booklet / proof</b>	digital proof / complete	<b>Next maintenance in</b>	16,500 km
<b>Last service on / at</b>	10/2025 at 88,950 km		
<b>Key is / should be</b>	2 / 2	<b>FZG documents</b>	ZB#2 (B) was available (copy), ZB#1 (S) was not available.
		<b>Letter No.</b>	GP829501
<b>Previous damage / Accident</b>	Detectable	<b>Repainting</b>	None detectable
<b>Inspection conditions</b>	sufficient	<b>Lifting equipment / pit</b>	No
<b>Test drive</b>	Not performed	<b>Engine function test</b>	Performed
<b>Manufacturer key number/ type code number</b>	0603 / CNM 00915		
<b>Emission standard</b>	EURO6;WLTP;AP;PI/CI; M, N1 I	<b>fine dust sticker</b>	
<b>Permitted total weight</b>	2,010 kg	<b>Empty weight</b>	

## Tyres

### Mounted tyres

#	Tyre size	Type of tyre	Manufacturer	Tread depth
1)	225/40 R18 92Y	Summer tyres on Light alloy	Bridgestone	4mm / 4mm
2)	225/40 R18 92Y	Summer tyres on Light alloy	Bridgestone	5mm / 5mm

### Additional tyres

#	Tyre size	Type of tyre	Manufacturer	Tread depth
1)	205/55 R16 91H	Winter tyres on Steel rim with wheel cover	Bridgestone	4mm / 4mm
2)	205/55 R16 91H	Winter tyres on Steel rim with wheel cover	Bridgestone	5mm / 5mm

**Legend: Tread depth information for the left tire is listed first, for the right tire it is listed second on the axle in the direction of travel.**

TÜV SÜD Auto Partner GmbH  
Wiesenring 2  
04159 Leipzig

Inspection location  
ARS Altmann AG Automobillogistik  
Römerstraße 3  
64560 Riedstadt



## Equipment



## Standard equipment

- Airbag for driver and front passenger (with passenger airbag deactivation)
- Ambient lighting
- Electrically adjustable and heated exterior mirrors with memory function and passenger-side mirror lowering function.
- third brake light
- black roof rails
- Decorative inlays "Nature Cross Brushed" (for instrument panel and front door trim)
- Diesel particulate filter and SCR catalyst
- Digital Cockpit Pro, multicolor (various info profiles selectable)
- Electronic differential lock XDS
- Electronic stability program and electromechanical brake booster (Anti-lock braking system with brake assist - Electronic brake force distribution - Traction control - Electronic differential lock - Engine drag torque control - Trailer stabilization)
- Pedestrian protection measures expanded
- Speed limiter (in conjunction with online services)
- Rear window heated
- Rear window wiper with intermittent function
- ISOFIX mounting points (for child seats on the outer rear seats and on the front passenger seat, i-Size compatible)
- Rear headrests (3)
- LED reading lights at the front (2) and 2 at the rear
- LED headlights
- Dynamic headlight range control
- Fatigue detection (detects signs of possible driver fatigue based on characteristic steering behavior, time of day and driving duration and issues a visual and audible warning)
- Emergency call service (no registration required, service is activated upon delivery)
- Package: Seating comfort package (2 USB-C ports in the front, 2 USB-C charging ports on the rear center console; charging power up to 45 W - front center armrest adjustable in height and length - front seats with height adjustment)
- Tire pressure monitoring system (passive)
- Wheels: Alloy wheels (4) "Norfolk" 7 J x 16 (tires 205/55 R 16)
- Wheels: Tire Mobility Set (12-volt compressor and tire sealant)
- Rear bench seat undivided, backrest asymmetrically split and foldable with center armrest
- Electromechanical power steering (speed-dependent control)
- Seat belts: Three-point automatic seat belts for the outer rear seats
- Seat covers in "Life" fabric
- Lane keeping assistant "Lane Assist"
- Start-stop system (with brake energy recuperation)
- Bumpers in body color
- Ambient lighting with logo projection
- Green thermal insulation glazing, sides and rear
- Airbags: Front and rear head airbags, front side airbags, center airbag
- App-Connect (selected apps for Android smartphones and Apple iPhones can be displayed and operated on the touchscreen of the radio or navigation system)
- Exterior mirror housings and door handles in body color
- Car2X (Using the WLANp ITS G5 standard, all Car2X-enabled vehicles and traffic systems such as traffic lights can transmit data at high speed without using the mobile network. This works over a distance of around 800 meters - enough to warn of an invisible traffic jam.)
- Parking aid (acoustic warning signals for obstacles in the front and rear area)
- Electronic parking brake including auto-hold function
- Automatic headlight control, with LED daytime running lights (as well as welcome and farewell lights)
- Electric windows, front and rear
- Windscreen made of laminated safety glass, heat and sound insulating
- luggage compartment cover
- Transmission: 7-speed DSG (7-speed dual-clutch transmission DSG)
- Rear spoiler in car color
- "Climatronic" air conditioning system (with active combination filter)
- Front headrests (safety-optimized)
- LED taillights
- Steering wheel: Multifunction leather steering wheel with paddle shifters
- Non-smoking version (storage compartment and 12V socket at the front)
- Emergency braking assistant "Front Assist" with pedestrian and cyclist detection (detects critical distance situations to other vehicles and helps to shorten the stopping distance - warns the driver visually and audibly in dangerous situations as well as with a preventive braking jolt with pedestrian and cyclist detection - also reacts to pedestrians and cyclists)
- Radio "Composition" (touchscreen with 21 cm screen diagonal - 4+1 speakers - output power 4 x 20 watts - FM radio reception - dual tuner with phase diversity for the best possible radio reception - Radio Data System (RDS) - MP3 playback - USB-C interface with Apple compatibility - DAB+ digital radio reception - telephone interface (hands-free system, Bluetooth audio))
- Keyless start system without safe locking
- Seat belts: Three-point automatic seat belt for the middle rear seat
- Seat belts: Three-point automatic seat belts at the front with height adjustment and belt tensioner
- Seats: Comfort seats in the front (with height adjustment and lumbar support)
- 12-volt power outlet in the luggage compartment
- Telephone interface with inductive charging function
- Electronic immobilizer



- Central locking without safe locking, with remote control and 2 remote folding keys

### Extra equipment

- LED Plus headlights (LED headlights for low and high beam - dynamic headlight range control - bad weather light and cornering light)
- Package: Light and Sight Package incl. High Beam Control "Light Assist" (High Beam Control "Light Assist" - Automatically Dimming Interior Mirror - Multifunction Camera - Rain Sensor)
- Package: Winter (DSG)
- Paint finish: Pearl effect
- Rear side windows and rear window tinted
- Towbar, foldable with electric release
- Wheels: Alloy wheels (4) "Bergamo" 7.5 J x 18 (in black, polished surface - with individual installation - wheel locks with enhanced theft protection - tires 225/40 R 18)
- Navigation system "Discover Media" incl. "Streaming & Internet"
- Package: Business Premium incl. navigation system (DSG) (6+1 speakers, App-Connect incl. App-Connect Wireless for Apple CarPlay, Android Auto, automatic distance control, adaptive cruise control (ACC) stop/go, speed limiter, emergency brake, pedestrian detection, travel assist, lane assist, emergency assist, leather multifunction steering wheel, heated, with shift paddles, multifunction camera, Discover Media navigation incl. streaming & internet (MP3, touchscreen, USB), cargo net partition, radio, heated windshield washer system, voice control, telephone interface, Comfort with inductive charging, textile floor mats, traffic sign recognition, heated front seats)

### Brief expert findings

Documents submitted	At the time of the inspection, the vehicle registration certificate Part 2 (title) was available, but the vehicle registration certificate Part 1 (document) was not. (Copy)
VIN comparison	The vehicle identification number (VIN) was read from the vehicle and its conformity with the submitted documents was confirmed by the undersigned during the inspection.
Inspection	The inspection conditions were sufficient for the assessment of the vehicle. No lifting equipment or pit was available for inspecting the vehicle. Therefore, inspection of the vehicle's underside was only possible to a limited extent.
Test drive	No test drive/shunting maneuver was carried out during the inspection of the vehicle.
Engine function test	An engine test run was performed.

### Value reducing factors

No.	Component group	Description
1	Front bumper	Front bumper - Scratch(es) - Paint
2	Vehicle glazing	Windscreen with lane departure assistant - Broken / torn - repair according to calculation

### Missing parts

#### Description

Interior - Separation net

### Previous damages

No.	Previous damage	Extent of damage (Net)
1	Front, Provided by user / customer, from 22 Oct 2024	1.292,21 €



## Order/Scope of Order

An order was placed to prepare a sales report for the described vehicle. This report includes the following:

- Description of key vehicle information
- Documentation of equipment features  
*(Delivery by third-party service providers)*
- Documentation of damage, defects, missing parts
- Documentation of prior damage, unrepaired prior damage, repainting
- A brief visual or functional inspection of the equipment details, if possible.  
*(Functional testing of driver assistance systems is not included in the scope of services!)*
- a photographic documentation of the vehicle

## Basis for the order

This product is based on the guidelines for vehicle returns and valuations published by Alphabet Fleet GmbH. The expert makes the specific findings in each individual case objectively, within the framework of the prescribed standards, based on their own expertise.

The vehicle inspection takes place in a fully assembled, unassembled state.

Damage or defects that can only be detected during disassembly/diagnostic work or through further investigation remain within the realm of prognostic risk. An increased risk exists due to concealed defects caused by fraudulent misrepresentation and which were not identifiable by the expert.

Damage or defects resulting from normal use or wear and tear of the vehicle will be accepted in accordance with the applicable standard.

There was no explicit identification or monetary consideration of the expected features within the product.

Features which, in their nature and extent, slightly exceed normal use but do not constitute unacceptable damage, will be documented and indicated as signs of wear, if applicable.

Damage or defects that, according to the applicable standard, can no longer be attributed to normal use or wear and tear are listed under "Value Reducing Factors" in the product description.

Depending on the product specification, a monetary ID can be provided. If this takes place, the costs can be 100% d or pro rata depending on the vehicle's age and mileage.

## Previous damages

According to available information previous damages were repaired at the vehicle. Traces of repairs, which allow conclusions about the area of repair, were not recognizable during the inspection.

## Comments

- Die Unterbodenbesichtigung war nur ebenerdig & eingeschränkt möglich. Mehrkosten möglich.



Figure 1: Diagonal front (left)



Figure 2: Diagonal front (right)



Figure 3: Diagonal rear (left)



Figure 4: Diagonal rear (right)



Figure 5: Interior - front



Figure 6: Interior - rear



Figure 7: Instrument cluster



Figure 8: Instrument panel



Figure 9: Interior 360° view



Figure 10: Cargo area

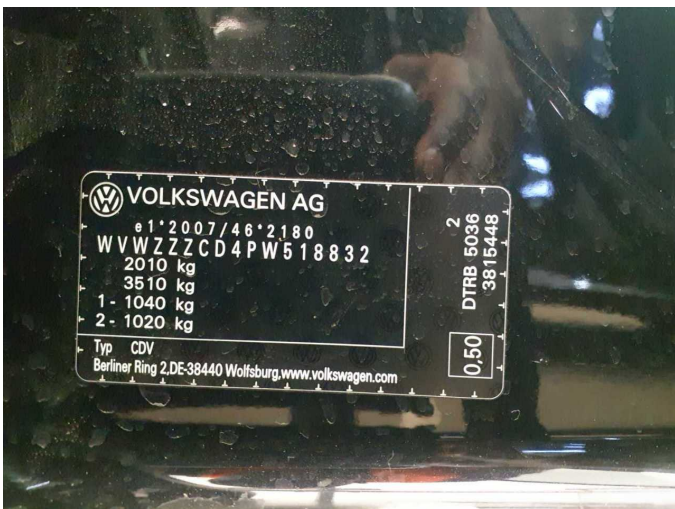


Figure 11: VIN



Figure 12: Mounted tyres



Figure 13: Documents

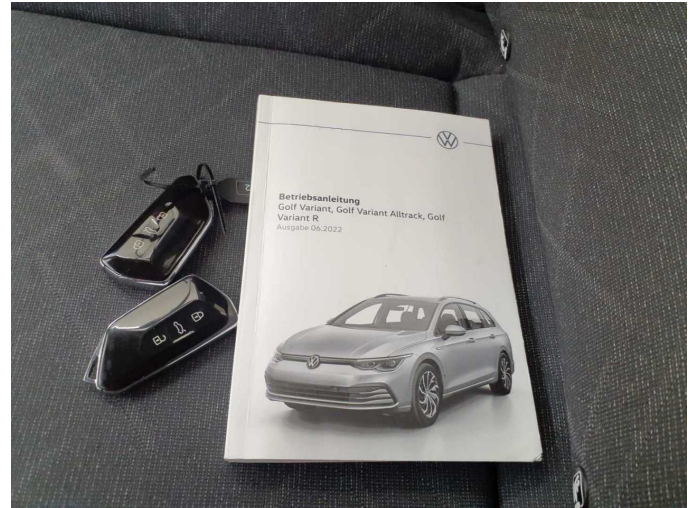


Figure 14: Documents



Figure 15: Documents



Figure 16: Additional tyres



Figure 17: Navigation

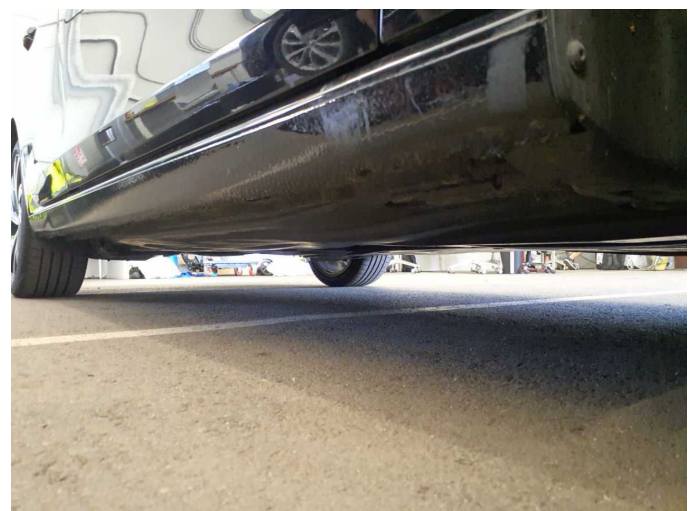


Figure 18: Misc.



Figure 19: Misc.



Figure 20: Misc.



Figure 21: Misc.



Figure 22: Misc.

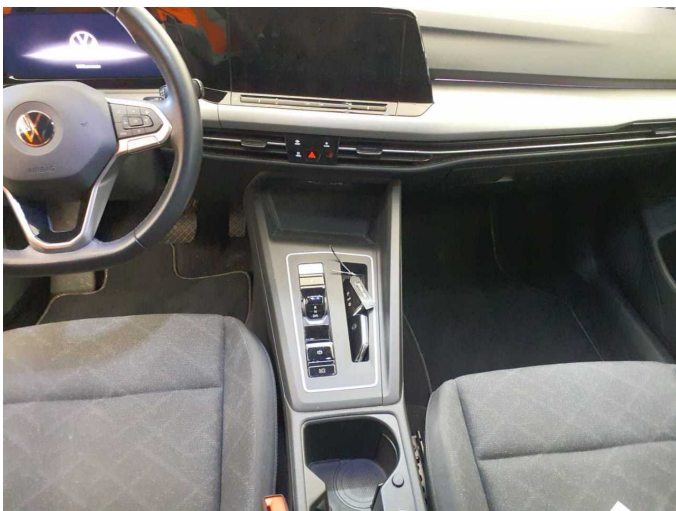


Figure 23: Misc.



Figure 24: Misc.

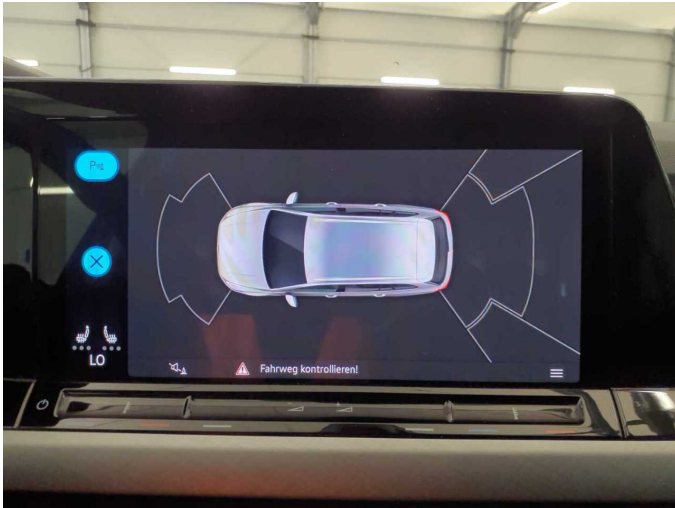


Figure 25: Misc.



Figure 26: Misc.

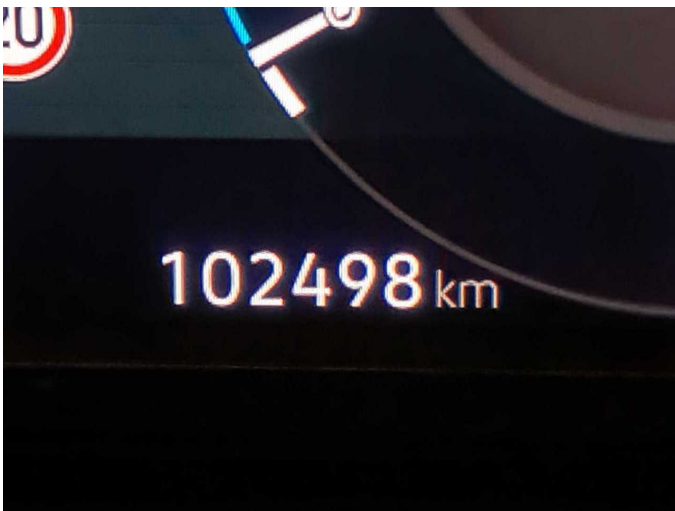


Figure 27: Misc.

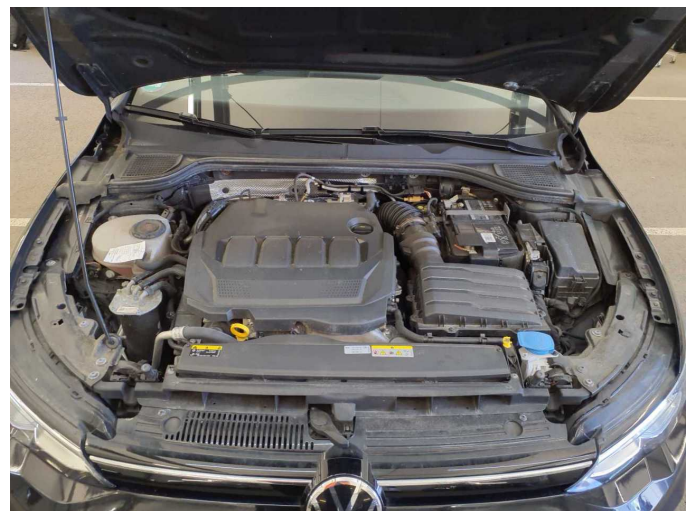


Figure 28: Misc.



Figure 29: Misc.



Figure 30: Misc.



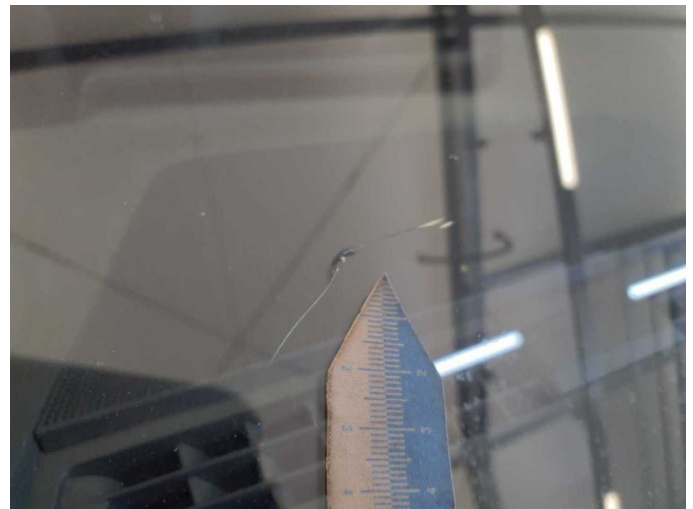
**Damage 1:** Front bumper: Front bumper - Scratch(es) - Paint



**Damage 1:** Front bumper: Front bumper - Scratch(es) - Paint



**Damage 2:** Vehicle glazing: Windscreen with lane departure assistant - Broken / torn - repair according to calculation



**Damage 2:** Vehicle glazing: Windscreen with lane departure assistant - Broken / torn - repair according to calculation



# Wartungshistorie

(gemäß Auftraggeber Informationen)

Fahrgestellnummer: WVWZZZCD4PW518832  
Hersteller / Modell: VOLKSWAGEN VOLKSWAGEN Golf Variant 2.0 TDI SCR DSG  
Life

Datum	KM-Stand	Beschreibung
29.10.2025	88.950	AU; Bremse Sonstiges; Bremsklötze hinten; Bremsklötze vorne; Bremsscheiben + Klötze h; Bremsscheiben + Klötze v; Bremsscheiben hinten; Bremsscheiben vorne; HU + AU; Kraftstofffilter ern; Luftfiltereinsatz ern; Motoröl b. Wartung; Ölfilter ern; Regelwartungsdienst; Systemtest/ Eigendiagnose; Wartung Sonstiges
03.12.2024	58.667	Bremsflüssigkeit; Bremsflüssigkeit ern; Motoröl b. Wartung; Ölfilter ern; Regelwartungsdienst; Wartung Sonstiges
19.12.2023	29.909	Motoröl b. Wartung; Ölfilter ern; Regelwartungsdienst; Wartung Sonstiges