

Expertise

Protocol number: 45854942
Order No. / Reference: 26419822
Inspection date: 9 Jun 2026

Manufacturer: Seat

Model: Ateca 2.0 TDI DSG Xperience

VIN: VSSZZZ5FZN6519174



Vehicle details

Manufacturer / Type / Model / Equipment

Seat Ateca 2.0 TDI DSG Xperience

Vehicle Identification number VSSZZZ5FZN6519174

Mileage (Read) 81,613 km

First registration 20 Apr 2022

Number of holders 1

Power / Engine displacement 110 kw / 1,968 ccm

Fuel type / Cylinder Diesel / 4

Gearbox / Number of gears Automatic / 7

Type of drive Front drive

Type of vehicle Station wagon

Colour / colour code Nevada Weiß Metallic

Doors / Seats 5 / 5

Upholstery type Alcantara / Leather

Colour of upholstery Black-Grey

Vehicle with smoke odor no



Vehicle details

Maintenance booklet / proof	Non-existent	Next maintenance in	6,500 km
Key is / should be	2 / 2	FZG documents	ZB#2 (B) was available (copy), ZB#1 (S) was not available.
		Letter No.	GG172383
Previous damage / Accident	None detectable	Repainting	None detectable
Inspection conditions	sufficient	Lifting equipment / pit	yes
Test drive	Not performed	Engine function test	Performed
Manufacturer key number/ type code number	7593 / AMQ 00222		
Emission standard	EURO6;WLTP;AP;PI/CI; M, N1 I	fine dust sticker	
Permitted total weight	2,030 kg	Empty weight	

Tyres

Mounted tyres

#	Tyre size	Type of tyre	Manufacturer	Tread depth
1)	235/40 R19 96V	Winter tyres on Light alloy	Bridgestone	2mm / 3mm
2)	235/40 R19 96V	Winter tyres on Light alloy	Bridgestone	5mm / 5mm

Additional tyres

#	Tyre size	Type of tyre	Manufacturer	Tread depth
1)	235/40 R19 96Y	Summer tyres (Without wheel rim)	Bridgestone	3mm / 3mm
2)	235/40 R19 96Y	Summer tyres (Without wheel rim)	Bridgestone	3mm / 3mm

Replacement

Typ	Tyre size	Type of tyre	Manufacturer	Tread depth
N	125/70 R18 99M	Summer tyres on Steel	Sonstige	4 mm

Legend: Tread depth information for the left tire is listed first, for the right tire it is listed second on the axle in the direction of travel.

TÜV SÜD Auto Partner GmbH
Wiesenring 2
04159 Leipzig

Inspection location
Mosolf SE & Co.KG
Faberweg 25
73230 Kirchheim unter Teck



Equipment



Standard equipment

- 12V socket at the front
- Storage compartment in the middle area of the lower dashboard
- Storage pocket on the back of the front seats
- Electrically adjustable, folding and heated exterior mirrors (turn signals integrated into exterior mirrors)
- Exterior mirror housings in body color
- Outdoor temperature display
- On-board computer
- Chrome trim on the side windows
- Diesel particulate filter and SCR catalyst
- Tachometer
- Third brake light, integrated into the tailgate
- Rear parking sensors
- Electronic Stability Control (ESC) (including Anti-lock Braking System (ABS) and Traction Control System (ASR))
- Gear recommendation display
- Cruise control system (CCS)
- Illuminated glove compartment
- Rear window wiper and rear window heater
- Body covers on the wheel arches
- Climatronic air conditioning system with electronic temperature control (separate temperature control for driver and front passenger)
- Center console with integrated storage compartment, center armrest, cup holders and rear air vents
- Fog lights with cornering light function in LED technology
- Package: Design Exterior Package "Silver" (chrome trim on the side windows - roof rails in silver - body covers on the wheel arches)
- Package: Light and Sight (Automatic Coming Home and Leaving Home function - Automatically dimming interior mirror - Light sensor with automatic headlight control - Rain sensor)
- Radio: Media System Plus Style, Xperience, FR (Audio system with 8.25" color touchscreen - USB and Aux-in interface - 2 USB charging ports for the 2nd row of seats - Bluetooth interface with integrated hands-free system and audio streaming - 8 speakers - Multifunction display with multi-color screen in the instrument panel - Emergency call service)
- SEAT Drive Profile with "Driving Experience" button and progressive steering (driving profiles can be individually selected - selected driving profile influences steering assistance, throttle response and shift characteristics (with DSG))
- Seats: Lumbar support for driver and front passenger with height adjustment for front passenger seat
- Front door sill trims in aluminum look, illuminated
- Lashing eyes in the luggage compartment
- Full LED headlights (low beam and high beam in LED technology - dynamic headlight range control)
- Electronic immobilizer
- thermal insulation glazing
- Central locking, including tailgate, with remote control
- Storage compartment for sunglasses on the driver's side
- Storage compartment in the front doors
- Storage compartment under the driver's seat
- Airbags (driver and front passenger airbag (passenger airbag deactivation) - side airbag for driver and front passenger - head airbag system, front and rear - driver's side knee airbag)
- Hill Start Assist (HHC)
- Chrome applications in the interior
- Silver roof rails
- Electronic differential lock (XDS)
- Three-point automatic seat belts, front and rear, with belt tensioners (with warning buzzer for unfastened seat belts)
- Electronic parking brake including auto-hold function
- Electric windows front and rear (with anti-pinch protection and one-touch function at the front)
- Luggage compartment cover
- Transmission: 7-speed DSG automatic transmission
- LED taillights
- ISOFIX child seat restraint system (in the 2nd row, left and right, including top tether anchor points)
- Headrests, 2 front, 3 rear
- Steering wheel: Multifunction steering wheel in leather
- Armrest - centre, rear
- Multifunction display with multi-color screen
- Fatigue detection
- Emergency call service
- Package: LED interior lighting (consisting of LED technology for: - Ambient lighting (multicolor) in the door trim - Ambient lighting front - Footwell lighting - Trunk lighting - Reading lights, 2 front / 2 rear - Make-up mirror lighting)
- Upholstery: Cloth
- Radio: Digital radio reception DAB+
- Tire Pressure Monitoring System (TPMS)
- Wheels: Tyre fit
- Rear view camera
- Rear seat backrest asymmetrically split and foldable
- Paddle shifters on the steering wheel
- Keyless locking and starting system "Kessy"
- SEAT CONNECT (prepared for the use of mobile online services)
- Side windows from the 2nd row of seats and rear window are dark tinted.
- Electromechanical power steering
- Seats: Driver's seat with height adjustment
- Start-stop technology
- LED daytime running lights



- Front Assist area monitoring system with City Emergency Braking function (If the distance to the vehicle in front decreases and the driver does not react, the Front Assist area monitoring system automatically brakes the vehicle. The City Emergency Braking function detects pedestrians on the road and automatically activates the brakes.)

Extra equipment

- Swiveling towbar with electric release
- Electrically operated tailgate (opening & closing)
- Navigation system with 9.2" color touchscreen (online infotainment function - prepared for the use of extended mobile online services - voice control - navigation data incl. MAPCARE)
- Package: Dinamica (Seat center panel in Dinamica microfiber, black - Comfort seats front)
- Package: Winter (multifunction leather steering wheel, heated - heated front seats)
- Park Assist with front and rear parking aid
- Radio accessories: BeatsAudio sound system (9 speakers - digital 12-channel amplifier - subwoofer - 340 watts total power)
- Virtual Cockpit (Fully digital instrument cluster with 10.25" TFT display)
- Deletion of the lettering on the tailgate
- Paint finish: Metallic
- Package: Business Package NAVIGATION (Navigation system with 9.2" color touchscreen, voice control - Full Link: Android Auto, Apple CarPlay - Wireless charger in the storage compartment of the center console - Spare wheel as emergency wheel)
- Package: Driving Assistance Package M for navigation system (High Beam Assist - Lane Keeping Assist - Traffic Sign Recognition - Adaptive Cruise Control ACC up to 210 km/h with predictive speed control)
- Wheels: 4 alloy wheels "Exclusive IV Atom Grey", polished (8J x 19 with tires 235/40 R 19)
- Wheels: Spare wheel as emergency wheel

Brief expert findings

Documents submitted	At the time of the inspection, the vehicle registration certificate Part 2 (title) was available, but the vehicle registration certificate Part 1 (document) was not. (Copy)
VIN comparison	The vehicle identification number (VIN) was read from the vehicle and its conformity with the submitted documents was confirmed by the undersigned during the inspection.
Inspection	The inspection conditions were sufficient for the assessment of the vehicle. Lifting equipment and/or a pit were available for examining the vehicle.
Test drive	No test drive/shunting maneuver was carried out during the inspection of the vehicle.
Engine function test	An engine test run was performed.

Value reducing factors

No.	Component group	Description
1	Braking system	Brake fluid - No evidence - No deduction
2	Misc.	Inspection / maintenance - No evidence - No deduction
3	Side panel - rear left side	Sill - dent(s) - Smooth repair work
4	Front bumper	Front bumper - Scratch(es) - Smart repair
5	Wheel / tyres	Alloy rim - front left side - Scratch(es) - Loss in value
6	Wheel / tyres	Alloy rim - front right side - Scratch(es) - Loss in value

Wear and tear

No.	Component group	Description
1	Documents	Service book (Digitaler Ausdruck) - Missing - No deduction
2	Wheel / tyres	Tyre - front - Does not meet the leasing specifications - No deduction

The vehicle shows signs of wear and tear commensurate with its age and use.



Order/Scope of Order

An order was placed to prepare a sales report for the described vehicle. This report includes the following:

- Description of key vehicle information
- Documentation of equipment features
(Delivery by third-party service providers)
- Documentation of damage, defects, missing parts
- Documentation of prior damage, unrepaired prior damage, repainting
- A brief visual or functional inspection of the equipment details, if possible.
(Functional testing of driver assistance systems is not included in the scope of services!)
- a photographic documentation of the vehicle

Basis for the order

This product is based on the guidelines for vehicle returns and valuations published by Alphabet Fleet GmbH. The expert makes the specific findings in each individual case objectively, within the framework of the prescribed standards, based on their own expertise.

The vehicle inspection takes place in a fully assembled, unassembled state.

Damage or defects that can only be detected during disassembly/diagnostic work or through further investigation remain within the realm of prognostic risk. An increased risk exists due to concealed defects caused by fraudulent misrepresentation and which were not identifiable by the expert.

Damage or defects resulting from normal use or wear and tear of the vehicle will be accepted in accordance with the applicable standard.

There was no explicit identification or monetary consideration of the expected features within the product.

Features which, in their nature and extent, slightly exceed normal use but do not constitute unacceptable damage, will be documented and indicated as signs of wear, if applicable.

Damage or defects that, according to the applicable standard, can no longer be attributed to normal use or wear and tear are listed under "Value Reducing Factors" in the product description.

Depending on the product specification, a monetary ID can be provided. If this takes place, the costs can be 100% d or pro rata depending on the vehicle's age and mileage.

Previous damages

No apparent prior damage that had been repaired could be found on the vehicle.

Comments

-Der montierte Reifensatz ist kein Bestandteil des Auslieferungsumfangs.

-Felgen der Winterräder gehören zu den Sommerreifen



Figure 1: Diagonal front (left)



Figure 2: Diagonal front (right)



Figure 3: Diagonal rear (left)



Figure 4: Diagonal rear (right)



Figure 5: Interior - front



Figure 6: Interior - rear



Figure 7: Instrument cluster



Figure 8: Instrument panel

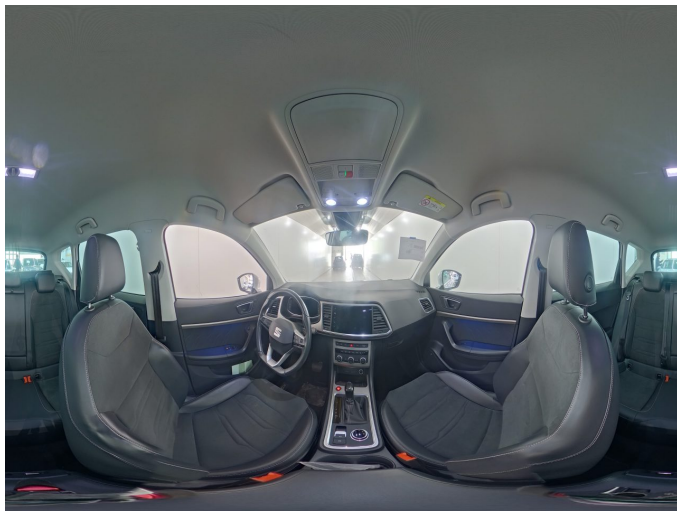


Figure 9: Interior 360° view



Figure 10: Cargo area

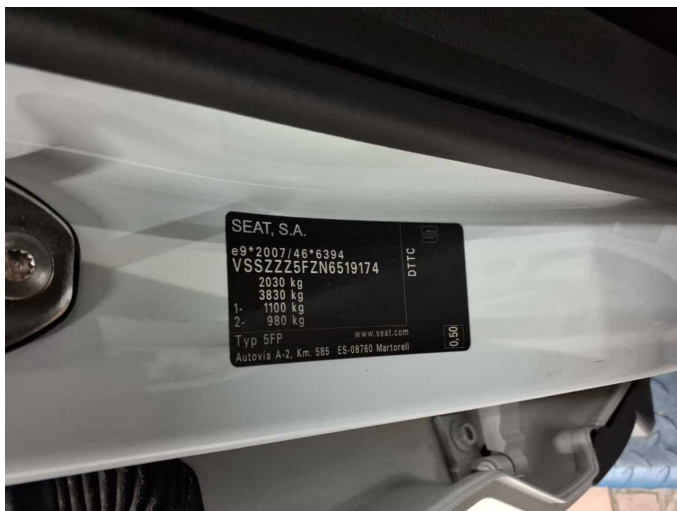


Figure 11: VIN



Figure 12: Mounted tyres



Figure 13: Documents

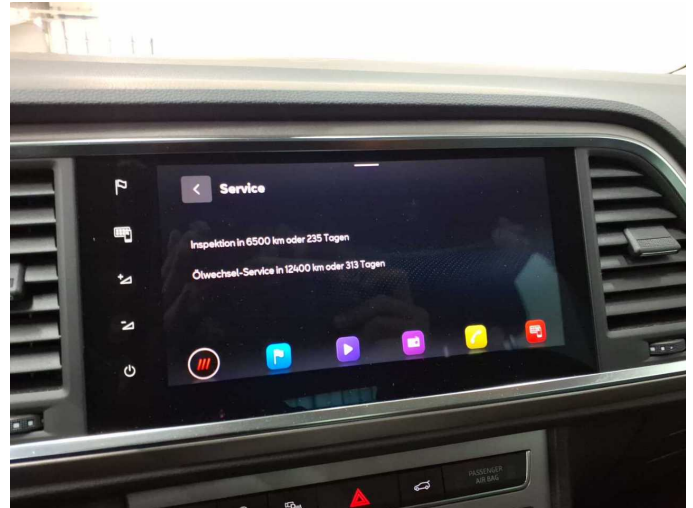


Figure 14: Documents



Figure 15: Additional tyres



Figure 16: Additional tyres



Figure 17: Navigation



Figure 18: Misc.



Figure 19: Misc.



Figure 20: Misc.

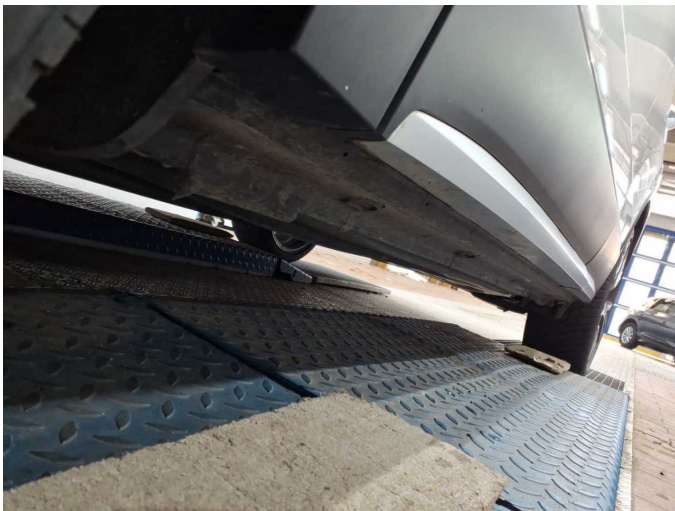


Figure 21: Misc.



Figure 22: Misc.



Figure 23: Misc.

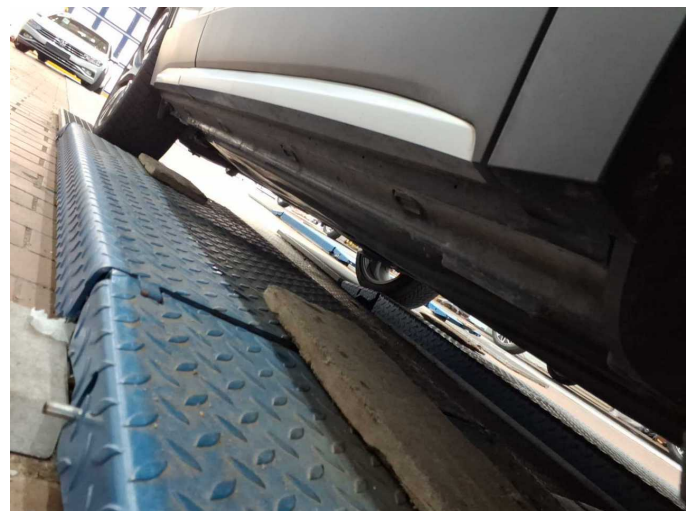


Figure 24: Misc.



Figure 25: Misc.



Figure 26: Misc.



Figure 27: Misc.



Figure 28: Misc.

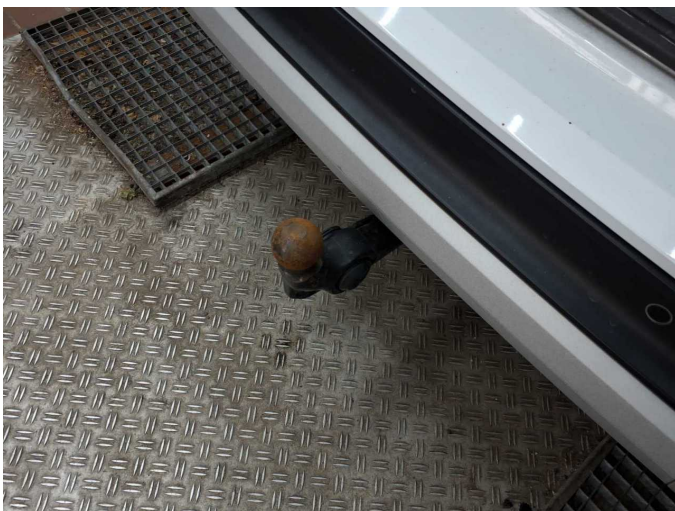


Figure 29: Misc.



Damage 3: Side panel - rear left side: Sill - dent(s) - Smooth repair work



Damage 3: Side panel - rear left side: Sill - dent(s) - Smooth repair work



Damage 4: Front bumper: Front bumper - Scratch(es) - Smart repair



Damage 4: Front bumper: Front bumper - Scratch(es) - Smart repair



Damage 5: Wheel / tyres: Alloy rim - front left side - Scratch(es) - Loss in value



Damage 5: Wheel / tyres: Alloy rim - front left side - Scratch(es) - Loss in value



Damage 6: Wheel / tyres: Alloy rim - front right side - Scratch(es) - Loss in value



Damage 6: Wheel / tyres: Alloy rim - front right side - Scratch(es) - Loss in value



Damage 6: Wheel / tyres: Alloy rim - front right side - Scratch(es) - Loss in value



Damage 6: Wheel / tyres: Alloy rim - front right side - Scratch(es) - Loss in value



Wear and tear 2: Wheel / tyres: Tyre - front - Does not meet the leasing specifications - No deduction



Wear and tear 2: Wheel / tyres: Tyre - front - Does not meet the leasing specifications - No deduction



Wear and tear 2: Wheel / tyres: Tyre - front - Does not meet the leasing specifications - No deduction



Wear and tear 2: Wheel / tyres: Tyre - front - Does not meet the leasing specifications - No deduction