

## Expertise

Protocol number: 46010859  
Order No. / Reference: 26456217  
Inspection date: 18 Jun 2026

Manufacturer: Mercedes-Benz

Model: GLC-Coupe 220 d 4Matic 9G-TRONIC

VIN: W1N0J1FB0PG158716



### Vehicle details

#### Manufacturer / Type / Model / Equipment

Mercedes-Benz GLC-Coupe 220 d 4Matic 9G-TRONIC

<b>Vehicle Identification number</b>	W1N0J1FB0PG158716
<b>Mileage (Read)</b>	20,419 km
<b>First registration</b>	31 Mar 2023
<b>Number of holders</b>	1
<b>Next periodical technical inspection</b> (Report on hand)	05/2028

<b>Power / Engine displacement</b>	143 kw / 1,950 ccm
------------------------------------	--------------------

<b>Fuel type / Cylinder</b>	Diesel / 4
-----------------------------	------------

<b>Gearbox / Number of gears</b>	Automatic / 9
----------------------------------	---------------

<b>Type of drive</b>	All-wheel drive
----------------------	-----------------

<b>Type of vehicle</b>	SUV
------------------------	-----

<b>Colour / colour code</b>	MANUFAKTUR selenitgrau magno
-----------------------------	---------------------------------

<b>Doors / Seats</b>	5 / 5
----------------------	-------

<b>Upholstery type</b>	Artificial leather
------------------------	--------------------

<b>Colour of upholstery</b>	Black
-----------------------------	-------

<b>Re-import</b>	no
------------------	----

<b>readiness to drive</b>	Roadworthy
---------------------------	------------



## Vehicle details

<b>Maintenance booklet / proof</b>	digital proof / complete	<b>Next maintenance in</b>	41 Tag(e)
<b>Last service on / at</b>	07/2025 at 14,781 km		
<b>Key is / should be</b>	2 / 2	<b>FZG documents</b>	ZB#2 (B) was available (copy), ZB#1 (S) was not available.
		<b>Letter No.</b>	GQ157181
<b>Previous damage / Accident</b>	Detectable	<b>Repainting</b>	Detectable
<b>Inspection conditions</b>	sufficient	<b>Lifting equipment / pit</b>	yes
<b>Test drive</b>	Not performed	<b>Engine function test</b>	Performed
<b>readiness to drive</b>	Roadworthy		
<b>Manufacturer key number/ type code number</b>	2222 / AKF 00133		
<b>Emission standard</b>	EURO6;WLTP;AP;PI/CI; M, N1 I	<b>fine dust sticker</b>	
<b>Permitted total weight</b>	2,500 kg	<b>Empty weight</b>	

## Tyres

### Mounted tyres

#	Tyre size	Type of tyre	Manufacturer	Tread depth
1)	255/45 R20 101W	Summer tyres on Light alloy	Pirelli	6mm / 6mm
2)	255/45 R20 101W	Summer tyres on Light alloy	Pirelli	6mm / 6mm

### Additional tyres

#	Tyre size	Type of tyre	Manufacturer	Tread depth
1)	235/60 R18 103H	Winter tyres on Light alloy	Pirelli	5mm / 5mm
2)	235/60 R18 103H	Winter tyres on Light alloy	Pirelli	5mm / 5mm

**Legend: Tread depth information for the left tire is listed first, for the right tire it is listed second on the axle in the direction of travel.**



## Equipment

### Standard equipment

- Storage compartments
- Airbag: Kneebag for driver
- Airbag: Windowbags
- 4MATIC all-wheel drive
- ATTENTION ASSIST
- Heated exterior mirrors (left and right), electrically adjustable from inside
- Tachometer
- DYNAMIC SELECT
- EASY-Pack cargo cover (removable)
- Electronic Stability Program (ESP)
- Chassis: Sport chassis
- electric parking brake
- Transmission: 9G-TRONIC
- Black fabric headliner
- Climate: THERMATIC automatic climate control with 2 climate zones
- Communication module (LTE) for the use of Mercedes me connect services
- Steering wheel: Multifunction sports steering wheel in 3-spoke design in black leather
- Mercedes-Benz emergency call system
- Package: Storage
- Package: Interior light
- Radio accessories: Digital radio
- Radio accessories: Touchpad
- Remote Services Plus
- Windscreen wipers with rain sensor
- Seats: i-Size child restraint system on the outer rear seats
- Cruise control
- High-visibility vest for drivers
- Central locking
- Airbag for driver and front passenger
- Airbag: Side airbag for driver and front passenger
- Active Brake Assist
- Anti-lock braking system (ABS)
- Automatic passenger airbag deactivation
- On-board computer
- Diesel particulate filter
- Third brake light in LED technology
- EASY-Pack tailgate with electric operation for opening and closing
- Driving light assistant
- Electric windows (4-way)
- Velour floor mats in interior color
- Rear window heated
- KEYLESS-GO start function
- Instrument cluster with 2 tubular round instruments, 13.97 cm (5.5") multifunction display
- Headrests 5-way
- LED High Performance Headlights
- Steering column mechanically adjustable in height and length
- Navigation accessories: Extended MBUX functions
- Package: Chrome
- Upholstery: ARTICO man-made leather
- Radio accessories: Remote Online
- Tire pressure monitoring system (TPMS)
- Rear view camera
- Seats: Rear seat backrests foldable
- Seats: Front seats electrically adjustable
- Pre-installation for roof rack systems
- Immobiliser



## Extra equipment

- Ambient lighting (Design the interior according to your personal preference or current mood. With a total of 64 colors, the ambient lighting offers almost unlimited possibilities for lighting design and has the right color for every situation. Illuminated door sills on the driver and passenger sides.)
- Package: Advanced Infotainment (Media display with touch operation, smartphone integration: Apple CarPlay and Android Auto, connectivity package, navigation, traffic sign assistant: thanks to intelligent linking of camera and map data, it can not only recognize speed limits, no-overtaking zones and their cancellation, but also displays no-entry signs and warns you of wrong-way driving.)
- Package: Comfort (Seat heating for driver and front passenger, electric and manual adjustment options for driver and front passenger seats, electro-pneumatic 4-way lumbar support and lateral support adjustment with control element on the seat, electric seat cushion tilt adjustment, electric height adjustment, electric backrest adjustment, mechanical seat cushion depth adjustment by 6 cm with leg rest pad, mechanical longitudinal adjustment, mechanical headrest adjustment)
- Radio accessories: Advanced sound system (4 midrange speakers - 2 tweeters - 2 front bass speakers - 1 center speaker - 225 W amplifier power)
- Radio accessories: MB-CONNECT MBUX Entertainment (Integration of music streaming services (user account required): - Spotify - Amazon Music - TIDAL - TuneIn (no user account required) Internet radio Third-party providers Comfort data volume)
- Wheels: Winter complete wheels M+S 4-way 45.7 cm (18") light alloy wheels in 5-twin-spoke design (45.7 cm (18") light alloy wheels in 5-twin-spoke design, Himalayan grey matt painted and polished with 235/60 R 18 on 8.0 J x 18 ET 38)
- Decorative elements: open-pored black ash wood
- Head-up display
- Paint finish: MANUFAKTUR selenite grey magno
- Navigation accessories: Pre-installation for Live Traffic Information (With Live Traffic Information, your navigation system receives real-time traffic data and optimizes dynamic route guidance. Thanks to precise and up-to-date information on traffic jams, stop-and-go traffic, and more, you are supported in reducing travel times.)
- Package: Advanced Park (Parking package with reversing camera, active parking assistant with PARKTRONIC)
- Package: Business (Advanced Parking Package: Active Parking Assist PARKTRONIC with reversing camera; Advanced Infotainment Package: Media display with touch operation, smartphone integration - Apple CarPlay and Android Auto, connectivity package navigation, traffic sign assist; Comfort Package: Heated seats for driver and front passenger, seat comfort package - electric and manual adjustment options for the front seats; larger fuel tank capacity)
- Package: Night for standard exterior equipment (radiator grille with 2 louvers in high-gloss black with chrome inserts, 48.3 cm (19") 6-spoke alloy wheels, painted high-gloss black and polished with 235/55 R 19 tires on 8 J x 19 ET 38 rims, roof rails in black, front and rear underguards painted black, exterior mirror housings painted high-gloss black, beltline trim and window surrounds in high-gloss black, heat-insulating dark tinted glass from the B-pillar back)
- Wheels: 50.8 cm (20") AMG light-alloy wheels, 4-spoke design (high-gloss black painted and polished with 255/45 R20 tires on 8.5 J x20 ET 40 rims)
- Wheels: Complete winter wheel sets fitted at the factory
- Electric sunroof (glass design with anti-pinch protection).
- Heat and sound insulating acoustic glass (The heat and sound insulating acoustic glass for the front side windows offers you greater noise comfort.)

## Brief expert findings

Documents submitted	At the time of the inspection, the vehicle registration certificate Part 2 (title) was available, but the vehicle registration certificate Part 1 (document) was not. (Copy)
VIN comparison	The vehicle identification number (VIN) was read from the vehicle and its conformity with the submitted documents was confirmed by the undersigned during the inspection.
Inspection	The inspection conditions were sufficient for the assessment of the vehicle. Lifting equipment and/or a pit were available for examining the vehicle.
Test drive	No test drive/shunting maneuver was carried out during the inspection of the vehicle.
Engine function test	An engine test run was performed.
readiness to drive	The vehicle was roadworthy at the time of inspection.



## Value reducing factors

No.	Component group	Description
1	Door - rear right side	Door - Scratch(es) - Paint
2	Door - rear left side	Door - Scratch(es) - Paint
3	Rear bumper	Rear bumper - Scratch(es) - Paint
4	Door - front right side	Door - Scratch(es) - Paint

## Missing parts

### Description

Documents - Log book  
2nd wheel set - Wheel cover set - complete (Nabendeckel)

## Previous damages

No.	Previous damage	Extent of damage (Net)
1	Side right, Provided by user / customer, from 26 Jul 2025	4.466,62 €
2	Side right, Provided by user / customer, from 21 Nov 2025	5.647,02 €

## Repainting

### No. Repainting

1	Mudguard - right side, Side panel - rear right side, Door - rear right side, Door - front right side, Professionally carried out, Invoice of repair done Non-existent
---	--

## Paint coat thickness measurement

Mudguard - right side	201 µm	Side panel - rear right side	168 µm
Door - rear right side	206 µm	Door - front right side	253 µm

## Order/Scope of Order

An order was placed to prepare a sales report for the described vehicle. This report includes the following:

- Description of key vehicle information
- Documentation of equipment features  
*(Delivery by third-party service providers)*
- Documentation of damage, defects, missing parts
- Documentation of prior damage, unrepaired prior damage, repainting
- A brief visual or functional inspection of the equipment details, if possible.  
*(Functional testing of driver assistance systems is not included in the scope of services!)*
- a photographic documentation of the vehicle



## Basis for the order

This product is based on the guidelines for vehicle returns and valuations published by Alphabet Fleet GmbH. The expert makes the specific findings in each individual case objectively, within the framework of the prescribed standards, based on their own expertise.

The vehicle inspection takes place in a fully assembled, unassembled state.

Damage or defects that can only be detected during disassembly/diagnostic work or through further investigation remain within the realm of prognostic risk. An increased risk exists due to concealed defects caused by fraudulent misrepresentation and which were not identifiable by the expert.

Damage or defects resulting from normal use or wear and tear of the vehicle will be accepted in accordance with the applicable standard.

There was no explicit identification or monetary consideration of the expected features within the product.

Features which, in their nature and extent, slightly exceed normal use but do not constitute unacceptable damage, will be documented and indicated as signs of wear, if applicable.

Damage or defects that, according to the applicable standard, can no longer be attributed to normal use or wear and tear are listed under "Value Reducing Factors" in the product description.

Depending on the product specification, a monetary ID can be provided. If this takes place, the costs can be 100% d or pro rata depending on the vehicle's age and mileage.

## Previous damages

According to available information previous damages were repaired at the vehicle. Traces of repairs, which allow conclusions about the area of repair, were not recognizable during the inspection.

## Comments

- Wartungshistorie gemäß Auftraggeber Informationen.



Figure 1: Diagonal front (left)



Figure 2: Diagonal front (right)



Figure 3: Diagonal rear (left)



Figure 4: Diagonal rear (right)

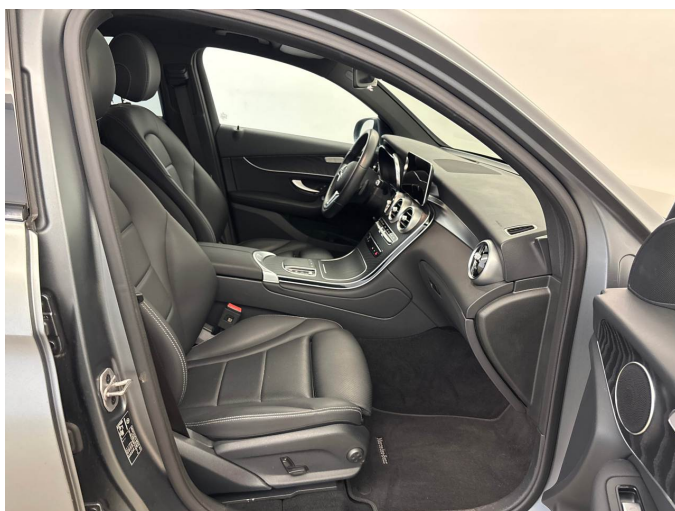


Figure 5: Interior - front



Figure 6: Interior - rear



Figure 7: Instrument cluster



Figure 8: Instrument panel



Figure 9: Interior 360° view



Figure 10: Cargo area



Figure 11: VIN



Figure 12: Mounted tyres



Figure 13: Documents



Figure 14: Documents



Figure 15: Additional tyres



Figure 16: Navigation

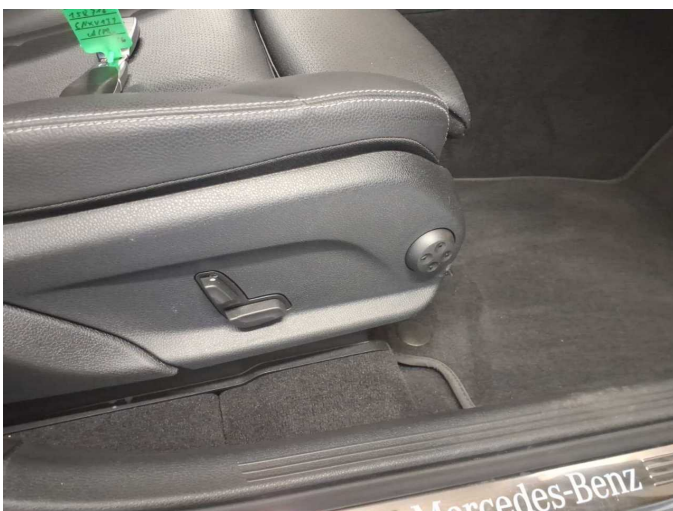


Figure 17: Misc.



Figure 18: Misc.



Figure 19: Misc.



Figure 20: Misc.



Figure 21: Misc.



Figure 22: Misc.

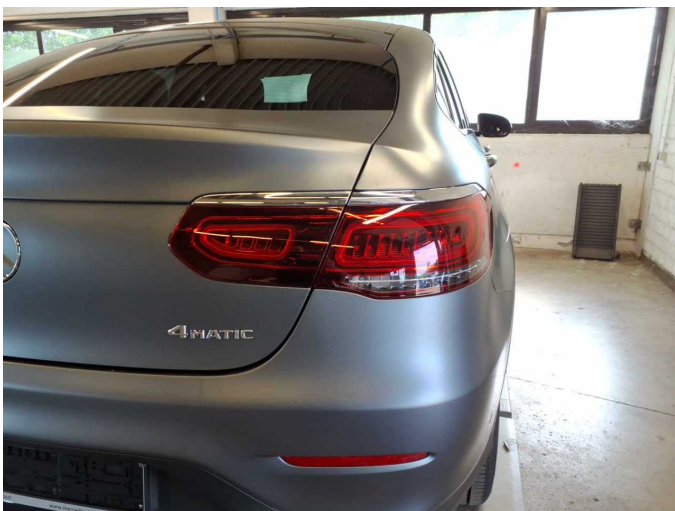


Figure 23: Misc.



Figure 24: Misc.



Figure 25: Misc.



Figure 26: Misc.

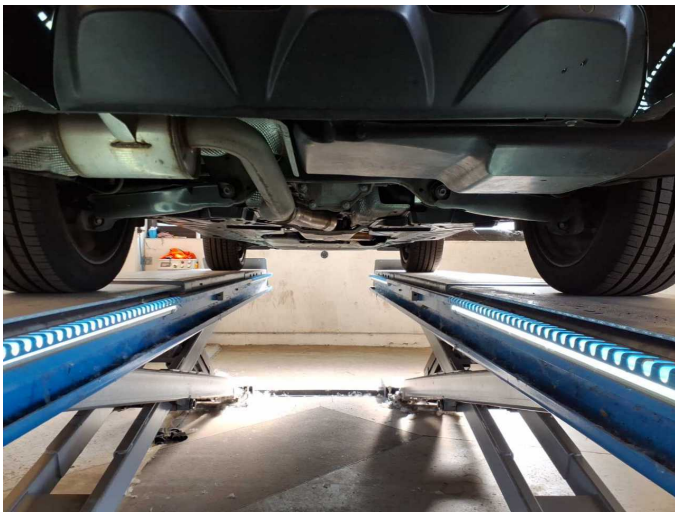


Figure 27: Misc.



Figure 28: Misc.

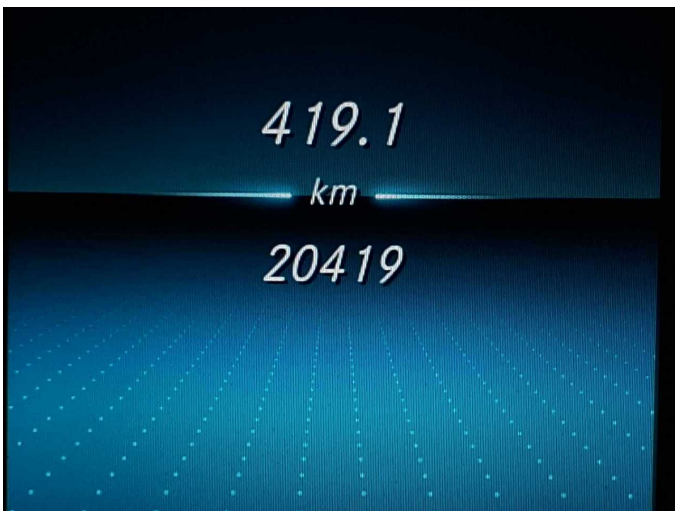


Figure 29: Misc.

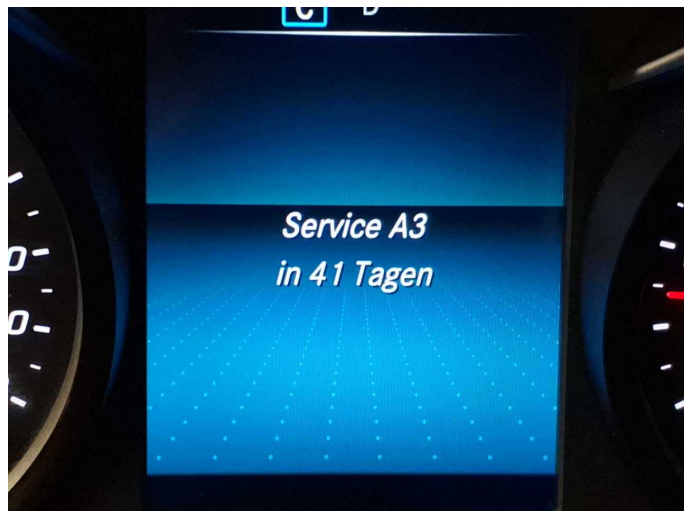


Figure 30: Misc.

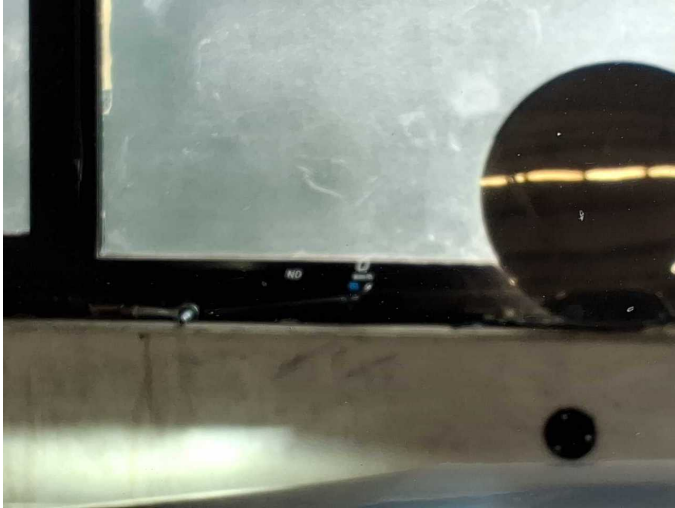


Figure 31: Misc.



Figure 32: Misc.



Figure 33: Misc.



Figure 34: Misc.



Damage 1: Door - rear right side: Door - Scratch(es) - Paint



Damage 1: Door - rear right side: Door - Scratch(es) - Paint



**Damage 2:** Door - rear left side: Door - Scratch(es) - Paint



**Damage 2:** Door - rear left side: Door - Scratch(es) - Paint



**Damage 2:** Door - rear left side: Door - Scratch(es) - Paint



**Damage 3:** Rear bumper: Rear bumper - Scratch(es) - Paint



**Damage 3:** Rear bumper: Rear bumper - Scratch(es) - Paint



**Damage 4:** Door - front right side: Door - Scratch(es) - Paint



**Damage 4:** Door - front right side: Door - Scratch(es) - Paint



**Missing part 2:** 2nd wheel set: Wheel cover set - complete (Nabendeckel) - Missing - Replace



**Repainting 1:** Mudguard - right side, Side panel - rear right side, Door - rear right side, Door - front right side



**Repainting 1:** Mudguard - right side, Side panel - rear right side, Door - rear right side, Door - front right side



**Repainting 1:** Mudguard - right side, Side panel - rear right side, Door - rear right side, Door - front right side



**Repainting 1:** Mudguard - right side, Side panel - rear right side, Door - rear right side, Door - front right side



# Wartungshistorie

(gemäß Auftraggeber Informationen)

Fahrgestellnummer: W1N0J1FB0PG158716

Hersteller / Modell: MERCEDES-BENZ MERCEDES-BENZ GLC-Coupe 220 d 4Matic  
9G-TRONIC

Datum	KM-Stand	Beschreibung
23.07.2025	14.781	Regelwartungsdienst
22.04.2024	6.829	Regelwartungsdienst