

Expertise

Protocol number: 45854245
Order No. / Reference: MW3001819
Inspection date: 26 May 2026

Manufacturer: Kia

Model: Sportage 1,6 CRDI AWD Eco-Dynamics+ (48V M-H) DCT Spirit

VIN: U5YPV81AHL256829



Vehicle details

Manufacturer / Type / Model / Equipment

Kia Sportage 1,6 CRDI AWD Eco-Dynamics+ (48V M-H) DCT Spirit

Vehicle Identification number U5YPV81AHL256829

Mileage (Read) 31,820 km

First registration 1 Oct 2024

Number of holders 1

Power / Engine displacement 100 kw / 1,598 ccm

Fuel type / Cylinder Hybrid Diesel / E / 4

Gearbox / Number of gears Automatic / 7

Type of drive All-wheel drive

Type of vehicle SUV

Colour / colour code Lunarsilber Metallic

Doors / Seats 5 / 5

Upholstery type Cloth / leather combination

Colour of upholstery Anthracite-Black



Vehicle details

Maintenance booklet / proof	Available / complete	Next maintenance in	
Last service on / at	08/2025 at 22,939 km		
Key is / should be	2 / 2	FZG documents	ZB#2 (B) was available (copy), ZB#1 (S) was not available.
		Letter No.	HD952389
Previous damage / Accident	None detectable	Repainting	None detectable
Inspection conditions	sufficient	Lifting equipment / pit	yes
Test drive	Not performed	Engine function test	Performed
Manufacturer key number/ type code number	2234 / AAP 00025		
Emission standard	EURO6;WLTP;AP;PI/CI; M, N1 I	fine dust sticker	
Permitted total weight	2,225 kg	Empty weight	

Tyres

Mounted tyres

#	Tyre size	Type of tyre	Manufacturer	Tread depth
1)	235/55 R18 104H	All-season tyres on Light alloy	Pirelli	6mm / 6mm
2)	235/55 R18 104H	All-season tyres on Light alloy	Pirelli	6mm / 6mm

Additional tyres

#	Tyre size	Type of tyre	Manufacturer	Tread depth
1)	235/55 R18 104V	Summer tyres on Light alloy	Continental	6mm / 6mm
2)	235/55 R18 104V	Summer tyres on Light alloy	Continental	6mm / 6mm

Replacement

Typ	Tyre size	Type of tyre	Manufacturer	Tread depth
	Tirefit	Expiration date 02/2029		

Legend: Tread depth information for the left tire is listed first, for the right tire it is listed second on the axle in the direction of travel.

TÜV SÜD Auto Partner GmbH
Wiesenring 2
04159 Leipzig

Inspection location
Hartmann Compound Professionals
Arnoldschacht 9-11
44894 Bochum



Equipment



Standard equipment

- Adaptive dual-LED headlights
- Airbag: 2 side airbags
- Airbag: Center airbag
- All-wheel drive (permanent) electronically controlled
- Anti-lock braking system (ABS)
- Electrically adjustable and heated exterior mirrors
- Hill descent control
- Roof antenna (Shark design)
- Front overhead console with reading lights
- Diesel particulate filter (DPF)
- Drive Mode Select
- EcoDynamics+
- Electric tailgate, sensor-controlled
- Electronic Stability Control (ESC) with Traction Control System (TCS)
- floor mat set
- Gear selector rotary switch (shift by wire)
- Luggage net loops in the luggage compartment
- Luggage compartment lighting
- Cruise control
- Heated rear window
- Interior rearview mirror self-dimming (electrochromatic)
- Integrated curved panoramic display with 12.3-inch fully digital instrument cluster
- Child safety locks on the rear doors
- Comfort turn signal (one-touch function)
- Radiator grille in piano black lacquer
- LED daytime running lights
- leather steering wheel
- Heated steering wheel
- Steering wheel: Multifunction steering wheel
- Armrest - centre, rear
- Center console with high-gloss black applications
- Navigation: Kia map navigation with a 31.2 cm (12.3 inch) screen diagonal
- Front and rear parking sensors
- Radio: Digital radio reception (DAB+)
- Radio accessories: Android Auto and Apple CarPlay
- Rain sensor
- Tire repair kit
- Rear view camera
- paddle shifters on the steering wheel
- Power steering
- Front seat belts, height adjustable
- Seats: Electric seat adjustment, driver's seat 10-way, passenger seat 8-way
- Seat: Rear seat heating (seat cushion and backrest, outer seats)
- Smart key and start button
- Lane keeping assist with visual/acoustic warning signal
- Phone accessories: Bluetooth with voice recognition
- Door handles in car color
- Airbag: 2 front airbags
- Airbag: 2 curtain airbags
- Active brake light
- Ambient lighting
- Electrically folding exterior mirrors
- Exterior mirrors with integrated turn signals
- Hill start assist
- Headliner and pillar trim in grey
- Roof rails
- Third brake light with LED
- twilight sensor
- Electric windows front and rear
- Electronic parking brake (EPB)
- Energy Regeneration System (AMS)
- Forward Collision Warning (FCA) with pedestrian and cyclist detection
- Vehicle Stability Management (VSM)
- luggage compartment cover
- Speed limiter
- 7-speed automatic transmission DCT
- Interior lighting
- Rear Seat Alert (RSA)
- Intelligent speed assistant
- ISOFIX mounts on outer rear seats
- Automatic air conditioning
- Headrests on all seats are height-adjustable.
- LED taillights
- LED fog lights
- Leather gear knob
- Steering wheel: Steering wheel adjustable for height and reach
- front center armrest
- Driver Alert System (DAW)
- Emergency call service eCall
- Kia Connect online services
- Upholstery: Fabric with faux leather appliqué
- Radio accessories: 6 speakers
- Radio accessories: USB port
- Tire pressure monitoring system
- Wheels: 18-inch alloy wheels
- Rear seat backrest foldable in a 40:20:40 split
- Headlights with escort function
- Seat belts
- Seat: Passenger seat height adjustable
- Seat: Driver's seat height adjustable
- Seat: Driver's seat with lumbar support
- Seat: Front seat heating
- Seating: Pockets in the backrests of the front seats
- Lane Following Assist (LFA)
- 12V socket front and rear
- Phone accessories: Inductive charging station for smartphones



- Front and rear underride protection
- USB charging port in the center console
- Glazing: Insulating glazing for the windshield
- Immobiliser
- Central locking with remote control

- USB charging ports on the sides of the front seats (one each)
- Glazing: Privacy glazing
- thermal insulation glazing
- Decorative strip below the side windows: Chrome-colored

Extra equipment

- Detachable towbar, including installation
- Hood lifter (telescopic damper)
- Paint finish: Metallic

- Package: P5 - DriveWise Park Plus Package (Active Blind Spot Assist with steering and braking intervention and monitor display - Rear Cross Traffic Alert including emergency braking function - Exit Assist - Highway Assist - Adaptive and navigation-based cruise control, including Stop&Go function - Extended Front Collision Warning - Turning function and cross traffic detection - Surround view camera - Rear Cross Traffic Alert)

Brief expert findings

Documents submitted	At the time of the inspection, the vehicle registration certificate Part 2 (title) was available, but the vehicle registration certificate Part 1 (document) was not. (Copy)
VIN comparison	The vehicle identification number (VIN) was read from the vehicle and its conformity with the submitted documents was confirmed by the undersigned during the inspection.
Inspection	The inspection conditions were sufficient for the assessment of the vehicle. Lifting equipment and/or a pit were available for examining the vehicle.
Test drive	No test drive/shunting maneuver was carried out during the inspection of the vehicle.
Engine function test	An engine test run was performed.

Value reducing factors

No.	Component group	Description
1	Misc.	Inspection / maintenance (keine Anzeige) - No evidence - No deduction
2	Trim / covers	Door trim - rear right side - Scratch(es) - Loss in value
3	Trim / covers	Boot lid - interior trim - Broken / torn - Replace
4	Boot lid / rear door	Boot lid - Glued / labelled - De-glue / neutralise
5	Rear bumper	Rear bumper - Scratch(es) - Smart repair
6	Vehicle glazing	Windscreen (Rissbildung) - Stone chips - Replace

Wear and tear

No.	Component group	Description
1	Bonnet	Bonnet - Stone chips - No deduction
2	Mudguard - right side	Mudguard - right side - Stone chips - No deduction
3	Front bumper	Front bumper - Stone chips - No deduction

The vehicle shows signs of wear and tear commensurate with its age and use.



Order/Scope of Order

An order was placed to prepare a sales report for the described vehicle. This report includes the following:

- Description of key vehicle information
- Documentation of equipment features
(Delivery by third-party service providers)
- Documentation of damage, defects, missing parts
- Documentation of prior damage, unrepaired prior damage, repainting
- A brief visual or functional inspection of the equipment details, if possible.
(Functional testing of driver assistance systems is not included in the scope of services!)
- a photographic documentation of the vehicle

Basis for the order

This product is based on the guidelines for vehicle returns and valuations published by Alphabet Fleet GmbH. The expert makes the specific findings in each individual case objectively, within the framework of the prescribed standards, based on their own expertise.

The vehicle inspection takes place in a fully assembled, unassembled state.

Damage or defects that can only be detected during disassembly/diagnostic work or through further investigation remain within the realm of prognostic risk. An increased risk exists due to concealed defects caused by fraudulent misrepresentation and which were not identifiable by the expert.

Damage or defects resulting from normal use or wear and tear of the vehicle will be accepted in accordance with the applicable standard.

There was no explicit identification or monetary consideration of the expected features within the product.

Features which, in their nature and extent, slightly exceed normal use but do not constitute unacceptable damage, will be documented and indicated as signs of wear, if applicable.

Damage or defects that, according to the applicable standard, can no longer be attributed to normal use or wear and tear are listed under "Value Reducing Factors" in the product description.

Depending on the product specification, a monetary ID can be provided. If this takes place, the costs can be 100% or pro rata depending on the vehicle's age and mileage.

Previous damages

No apparent prior damage that had been repaired could be found on the vehicle.

Comments

Restlaufservice lässt sich nicht abfragen

Der montierte Radsatz ist nicht Bestandteil der Ausstattung.



Figure 1: Instrument cluster



Figure 2: Cargo area



Figure 3: VIN



Figure 4: Documents

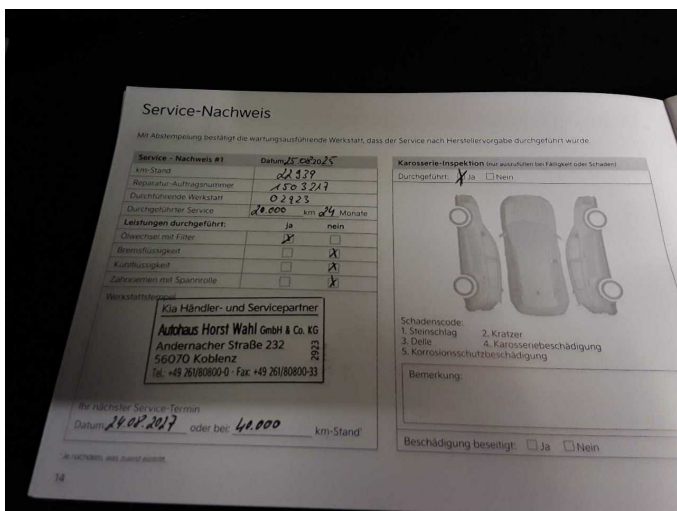


Figure 5: Documents



Figure 6: Additional tyres

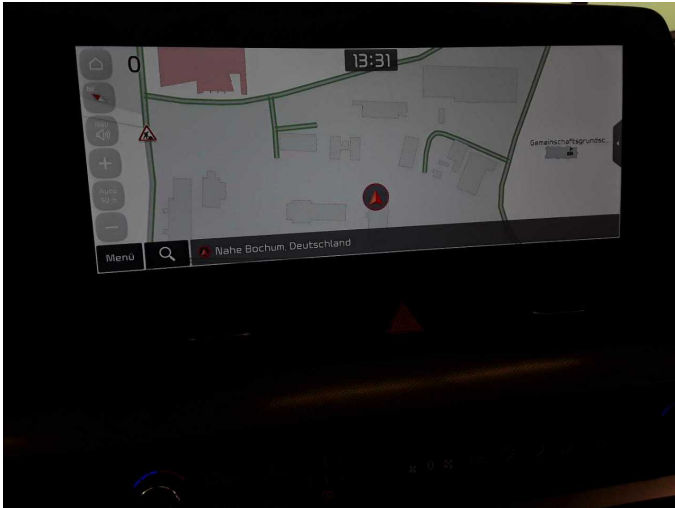


Figure 7: Navigation



Figure 8: Misc.



Figure 9: Misc.



Figure 10: Misc.

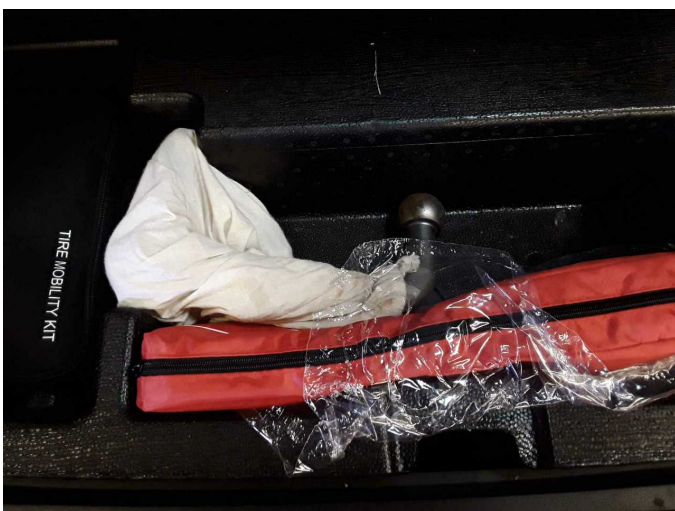


Figure 11: Misc.



Figure 12: Misc.



Figure 13: Misc.



Figure 14: Misc.



Figure 15: Misc.



Figure 16: Misc.

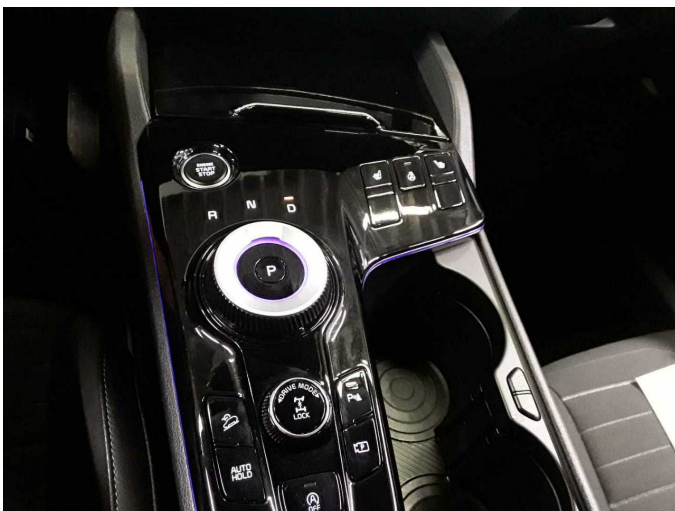


Figure 17: Misc.

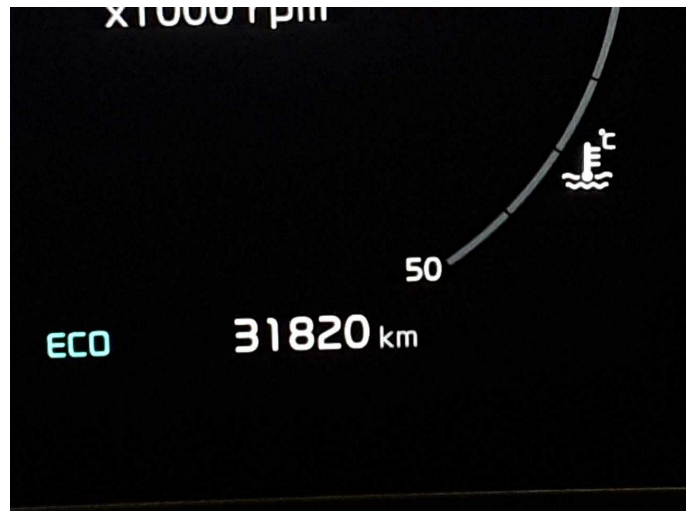


Figure 18: Misc.



Figure 19: Misc.



Figure 20: Misc.



Figure 21: Misc.



Figure 22: Misc.



Figure 23: Misc.



Damage 2: Trim / covers: Door trim - rear right side - Scratch(es) - Loss in value



Damage 2: Trim / covers: Door trim - rear right side - Scratch(es) - Loss in value



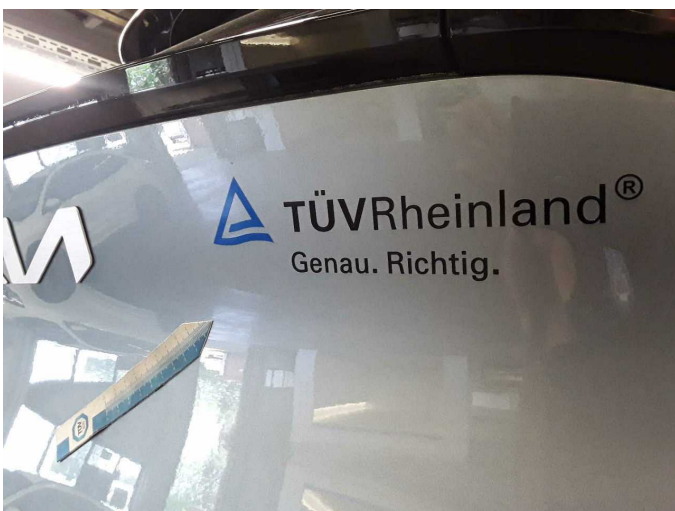
Damage 3: Trim / covers: Boot lid - interior trim - Broken / torn - Replace



Damage 3: Trim / covers: Boot lid - interior trim - Broken / torn - Replace



Damage 4: Boot lid / rear door: Boot lid - Glued / labelled - De-glug / neutralise



Damage 4: Boot lid / rear door: Boot lid - Glued / labelled - De-glug / neutralise



Damage 5: Rear bumper: Rear bumper - Scratch(es) - Smart repair



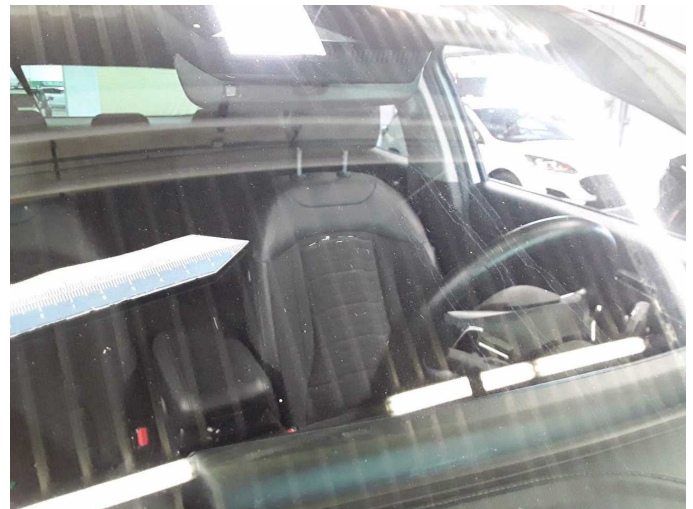
Damage 5: Rear bumper: Rear bumper - Scratch(es) - Smart repair



Damage 6: Vehicle glazing: Windscreen (Rissbildung) - Stone chips - Replace



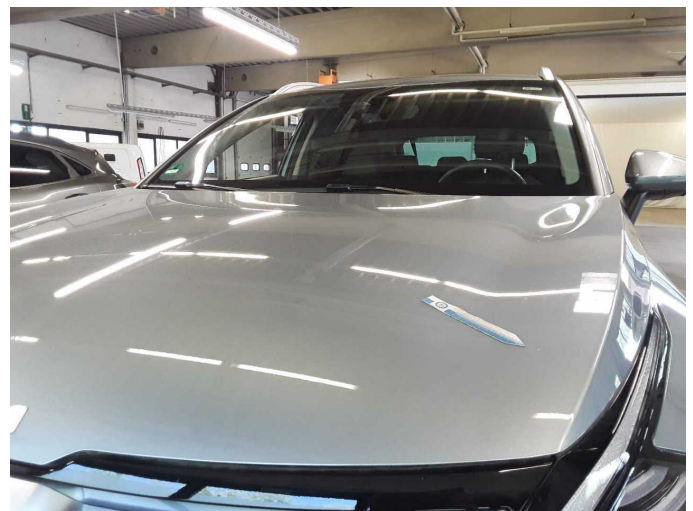
Damage 6: Vehicle glazing: Windscreen (Rissbildung) - Stone chips - Replace



Damage 6: Vehicle glazing: Windscreen (Rissbildung) - Stone chips - Replace



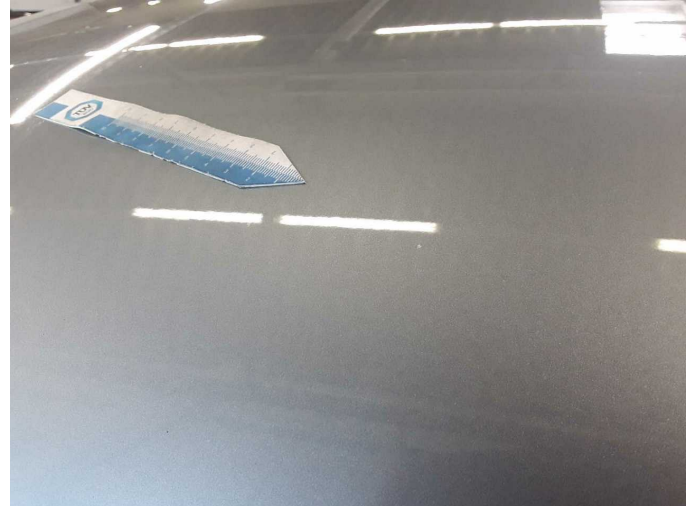
Damage 6: Vehicle glazing: Windscreen (Rissbildung) - Stone chips - Replace



Wear and tear 1: Bonnet: Bonnet - Stone chips - No deduction



Wear and tear 1: Bonnet: Bonnet - Stone chips - No deduction



Wear and tear 1: Bonnet: Bonnet - Stone chips - No deduction



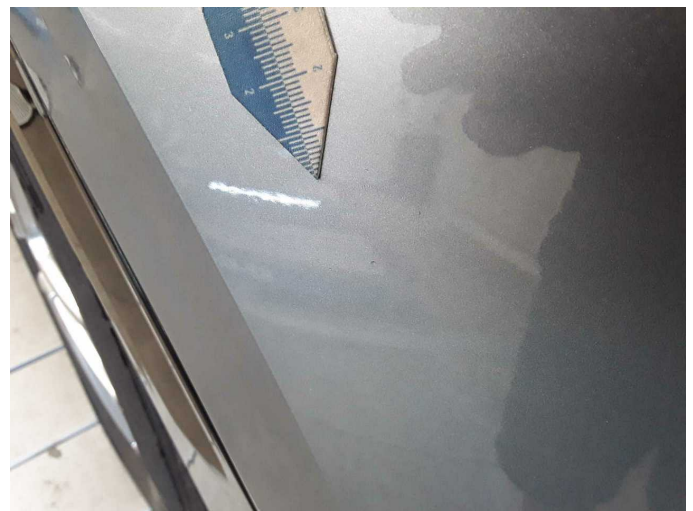
Wear and tear 2: Mudguard - right side: Mudguard - right side - Stone chips - No deduction



Wear and tear 2: Mudguard - right side: Mudguard - right side - Stone chips - No deduction



Wear and tear 3: Front bumper: Front bumper - Stone chips - No deduction



Wear and tear 3: Front bumper: Front bumper - Stone chips - No deduction