

Expertise

Protocol number: 46179573
Order No. / Reference: 26508648
Inspection date: 24 Jun 2026

Manufacturer: Ford

Model: Focus Turnier 1.0 EcoBoost Start-Stop-System Aut. ACTIVE X

VIN: WF0PXXGCHPMG57692



Vehicle details

Manufacturer / Type / Model / Equipment

Ford Focus Turnier 1.0 EcoBoost Start-Stop-System Aut. ACTIVE X

Vehicle Identification number WF0PXXGCHPMG57692

Mileage (Read) 124,092 km

First registration 30 Nov 2021

Number of holders 1

Next periodical technical inspection 01/2027

(Report not on hand)

Power / Engine displacement 92 kw / 999 ccm

Fuel type / Cylinder Petrol / 3

Gearbox / Number of gears Automatic / 8

Type of drive Front drive

Type of vehicle Station wagon

Colour / colour code Dynamic-Blau Metallic

Doors / Seats 5 / 5

Upholstery type Artificial leather

Colour of upholstery Anthracite-Black



Vehicle details

| | | | |
|--|------------------------------|--------------------------------|--|
| Maintenance booklet / proof | digital proof / complete | Next maintenance in | 93 % |
| Last service on / at | 05/2026 at 123,989 km | | |
| Key is / should be | 2 / 2 | FZG documents | ZB#2 (B) was available (copy), ZB#1 (S) was not available. |
| | | Letter No. | GD574307 |
| Previous damage / Accident | Detectable | Repainting | Detectable |
| Inspection conditions | sufficient | Lifting equipment / pit | No |
| Test drive | Not performed | Engine function test | Performed |
| Manufacturer key number/ type code number | 8566 / BPP 00553 | | |
| Emission standard | EURO6;WLTP;AP;PI/CI; M, N1 I | fine dust sticker | |
| Permitted total weight | 1,970 kg | Empty weight | |

Tyres

Mounted tyres

| # | Tyre size | Type of tyre | Manufacturer | Tread depth |
|----|----------------|-----------------------------|--------------|-------------|
| 1) | 215/55 R17 98V | Winter tyres on Light alloy | Bridgestone | 6mm / 6mm |
| 2) | 215/55 R17 98V | Winter tyres on Light alloy | Bridgestone | 7mm / 7mm |

Additional tyres

| # | Tyre size | Type of tyre | Manufacturer | Tread depth |
|----|----------------|-----------------------------|--------------|-------------|
| 1) | 215/50 R18 96V | Summer tyres on Light alloy | Continental | 6mm / 6mm |
| 2) | 215/50 R18 96V | Summer tyres on Light alloy | Continental | 6mm / 6mm |

Replacement

| Typ | Tyre size | Type of tyre | Manufacturer | Tread depth |
|-----|-----------|-------------------------|--------------|-------------|
| | Tirefit | Expiration date 09/2025 | | |

Legend: Tread depth information for the left tire is listed first, for the right tire it is listed second on the axle in the direction of travel.

TÜV SÜD Auto Partner GmbH
Wiesenring 2
04159 Leipzig

Inspection location
ARS Altmann AG Automobillogistik
Römerstraße 3
64560 Riedstadt



Equipment



Standard equipment

- Airbag: Passenger airbag deactivation
- Exterior mirrors in body color, driver and passenger side, electrically adjustable and heated
- Crossover body kit
- Roof rails, black
- Digital instrument panel 12.3" (31.2 cm screen diagonal)
- Electronic Shifter
- Driver information system
- Lane keeping assist including lane keeping assist
- Electric windows front and rear
- Electric parking brake with auto-hold function
- Ford ECO-Coach
- FordPass Connect including eCall, live traffic information (only with navigation) and Wi-Fi hotspot
- Speed limiter
- Transmission: 8-speed automatic transmission
- Tailgate, electric and sensor-controlled
- rear window wiper
- Instrument lighting, adjustable
- Isofix bracket
- Radiator grille with honeycomb design
- LED daytime running lights
- Adjustable steering column
- Center console "Premium" front
- Navigation: Ford Navigation, Ford SYNC 3 with AppLink, 8" touchscreen (20.3 cm) with DAB/DAB+ (Ford SYNC 3 communication and entertainment system with voice control, radio, 2 USB ports, 6 speakers and steering wheel remote control, Bluetooth hands-free calling and audio streaming, SMS reading and sending option, voice control for audio and telephone, support for Android Auto and Apple CarPlay, dynamic navigation with TMCpro, road map for Europe, voice control, destination input and search, advanced voice output, detailed visualization, Michelin travel guide for Europe)
- Visibility package (windscreen wipers with rain sensor, adjustable sensitivity - interior mirror, automatically dimming - headlights with delayed shut-off)
- Pollen filter and dust filter
- Pre-Collision Assist
- Tire Pressure Monitoring System (TPMS)
- Headlight assistant with day/night sensor
- Electromechanical power steering
- Seats: Passenger seat height-adjustable, manually
- Seats: Map grid on the driver's and front passenger's seat backrests
- Start-stop system
- Carpet floor mats front and rear, velour
- Lashing eyes in the luggage compartment
- Electronic immobilizer
- Heat-insulating glazing, tinted
- Anti-lock braking system (ABS) with electronic brake force distribution (EBD)
- Mounting points behind the second row of seats
- Black woven fabric headliner
- Roof spoiler painted in car color
- Tachometer
- Electronic Safety and Stability Program (ESP)
- Driving mode switch, selective
- Chassis: Chassis with 30 mm increased ground clearance
- Ford Easy Fuel
- Ford Power Start function
- Luggage compartment lighting
- Luggage compartment floor, adjustable in two ways
- Cruise control
- Illuminated glove compartment
- Back window, heater
- Interior lighting with LED technology
- Intelligent security system
- Headrests: 2 front and 3 rear, height adjustable
- LED fog lights
- Steering wheel: 3-spoke design
- Make-up mirrors in driver and passenger sun visors
- MyKey key system (individually programmable second key)
- Emergency brake light
- Otto particulate filter
- Package: Family (rear seat backrest with ski pass-through - rear center armrest with 2 cup holders - electric child safety locks for doors - manually height-adjustable front passenger seat with adjustable lumbar support)
- Package: Comfort (2-zone automatic climate control for driver and front passenger side, separately adjustable - Ford Key Free system (keyless locking/unlocking) including Ford Power Start function (keyless starting) - Windscreen wipers with rain sensor, variable sensitivity adjustment - Interior mirror, automatically dimming - Headlights with delayed shut-off)
- Front and rear parking pilot system
- Post-Collision Assist
- Tire repair kit
- Rear view camera
- Side windows from the 2nd row of seats and rear window, dark tinted.
- Seats: Driver's seat height adjustable
- Seats: Rear seat backrest
- Seats: Front sports seats with enhanced lateral support
- 12-volt power outlet in the luggage compartment
- Black trim around the side windows
- Warning system for unfastened seat belts for the 1st and 2nd rows of seats
- Central/Double Locking



Extra equipment

- Swiveling towbar (incl. ESP trailer stabilization)
- Reversible luggage compartment mat
- Paint finish: Metallic
- Adaptive LED headlights with glare-free high beam assist and camera-based cornering lights (Intelligent light cone, camera-controlled - Automatic headlight range control - Sequential LED turn signals, front - LED taillights)
- Package: Safety Package (Traffic Sign Recognition System - Wrong-Way Driver Warning Function - High Beam Assist (in conjunction with intelligent LED headlights with glare-free high beam assist) - Driver Fatigue Warning)
- Upholstery: Premium Sensico upholstery in leather look (front seats, individually and variably heated - driver's seat, 8-way electrically adjustable)
- Safety partition net for luggage compartment
- Tires: 7 J x 18 light alloy wheels (4) with 215/50 R 18 (in 5x2-spoke Y-design in black, gloss-turned)
- Charging station for mobile devices (inductive)
- Package: Contrast Package Black (roof and exterior mirror housings painted in contrasting color Obsidian Black)
- Package: Parking package (reversing camera with "Split View" technology - blind spot assist and cross traffic alert with emergency braking function (when reversing out of a parking space) - door edge protection)
- Package: Winter (heated windscreen - heated steering wheel - individually and variably heated front seats)
- Radio: B&O Sound System (675 Watt premium sound system with 10 speakers - including subwoofer based on the renowned sound and design expertise of Bang & Olufsen)

Brief expert findings

| | |
|----------------------|---|
| Documents submitted | At the time of the inspection, the vehicle registration certificate Part 2 (title) was available, but the vehicle registration certificate Part 1 (document) was not. (Copy) |
| VIN comparison | The vehicle identification number (VIN) was read from the vehicle and its conformity with the submitted documents was confirmed by the undersigned during the inspection. |
| Inspection | The inspection conditions were sufficient for the assessment of the vehicle. No lifting equipment or pit was available for inspecting the vehicle. Therefore, inspection of the vehicle's underside was only possible to a limited extent. |
| Test drive | No test drive/shunting maneuver was carried out during the inspection of the vehicle. |
| Engine function test | An engine test run was performed. |

Value reducing factors

| No. | Component group | Description |
|-----|------------------------------|--|
| 1 | Equipment | Tirefit filler - Expired - Replace |
| 2 | Side panel - rear right side | Side panel - Scratch(es) - Smart repair |
| 3 | Front bumper | Front bumper - Deformed - Repair and paint |

Wear and tear

| No. | Component group | Description |
|-----|-----------------|---|
| 1 | Front bumper | Front bumper - Stone chips - No deduction |
| 2 | Bonnet | Bonnet - Stone chips - No deduction |
| 3 | Vehicle glazing | Windscreen - Stone chips - No deduction |
| 4 | Interior | Interior - Soiled - No deduction |
| 5 | Rear bumper | Rear bumper - Scratch(es) - No deduction |

The vehicle shows signs of wear and tear commensurate with its age and use.

Previous damages

| No. | Previous damage | Extent of damage (Net) |
|-----|---|------------------------|
| 1 | Side right, Provided by user / customer, from 26 Jul 2023 | 2.452,32 € |



Order/Scope of Order

An order was placed to prepare a sales report for the described vehicle. This report includes the following:

- Description of key vehicle information
- Documentation of equipment features
(Delivery by third-party service providers)
- Documentation of damage, defects, missing parts
- Documentation of prior damage, unrepaired prior damage, repainting
- A brief visual or functional inspection of the equipment details, if possible.
(Functional testing of driver assistance systems is not included in the scope of services!)
- a photographic documentation of the vehicle

Basis for the order

This product is based on the guidelines for vehicle returns and valuations published by Alphabet Fleet GmbH. The expert makes the specific findings in each individual case objectively, within the framework of the prescribed standards, based on their own expertise.

The vehicle inspection takes place in a fully assembled, unassembled state.

Damage or defects that can only be detected during disassembly/diagnostic work or through further investigation remain within the realm of prognostic risk. An increased risk exists due to concealed defects caused by fraudulent misrepresentation and which were not identifiable by the expert.

Damage or defects resulting from normal use or wear and tear of the vehicle will be accepted in accordance with the applicable standard.

There was no explicit identification or monetary consideration of the expected features within the product.

Features which, in their nature and extent, slightly exceed normal use but do not constitute unacceptable damage, will be documented and indicated as signs of wear, if applicable.

Damage or defects that, according to the applicable standard, can no longer be attributed to normal use or wear and tear are listed under "Value Reducing Factors" in the product description.

Depending on the product specification, a monetary ID can be provided. If this takes place, the costs can be 100% d or pro rata depending on the vehicle's age and mileage.

Previous damages

According to available information previous damages were repaired at the vehicle. Traces of repairs, which allow conclusions about the area of repair, were not recognizable during the inspection.

Comments

- Das Fahrzeug weist im ganzen erhöhte Lackschichtendicke Werte auf.
- Die Unterbodenbesichtigung war nur ebenerdig & eingeschränkt möglich. Mehrkosten möglich.
- Der angegebene Winterradsatz ist kein Bestandteil des Auslieferungsumfangs.
- Ein Nachweis über die Zulässigkeit des beiliegenden Radsatzes wurde nicht erbracht.



Figure 1: Diagonal front (left)



Figure 2: Diagonal front (right)



Figure 3: Diagonal rear (left)



Figure 4: Diagonal rear (right)

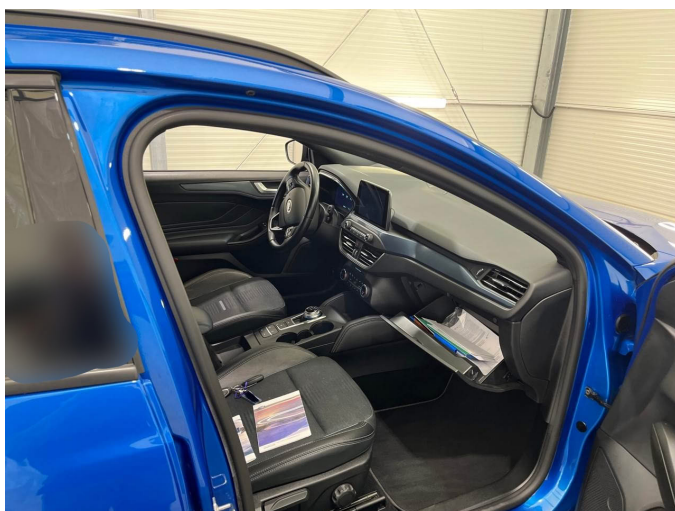


Figure 5: Interior - front



Figure 6: Interior - rear



Figure 7: Instrument cluster



Figure 8: Instrument panel



Figure 9: Interior 360° view



Figure 10: Cargo area



Figure 11: VIN



Figure 12: Mounted tyres



Figure 13: Documents



Figure 14: Documents



Figure 15: Additional tyres



Figure 16: Navigation



Figure 17: Misc.



Figure 18: Misc.



Figure 19: Misc.



Figure 20: Misc.



Figure 21: Misc.



Figure 22: Misc.

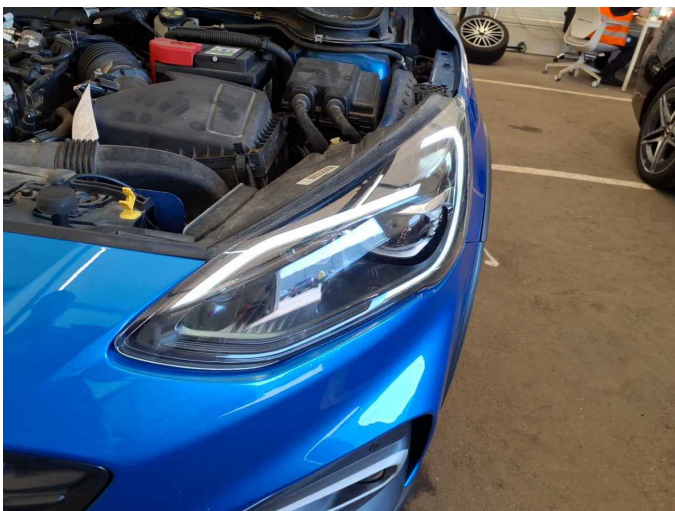


Figure 23: Misc.

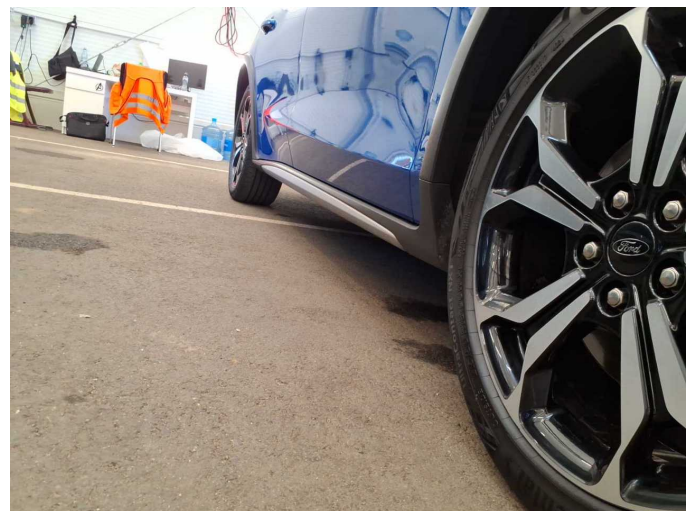


Figure 24: Misc.



Figure 25: Misc.



Figure 26: Misc.



Figure 27: Misc.

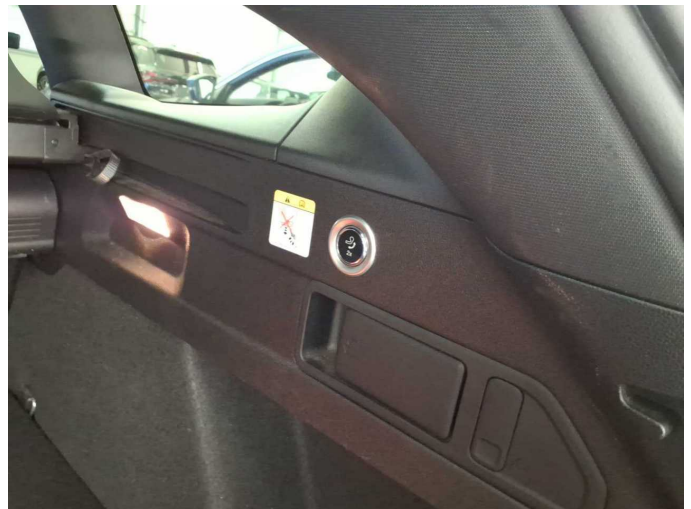


Figure 28: Misc.



Figure 29: Misc.



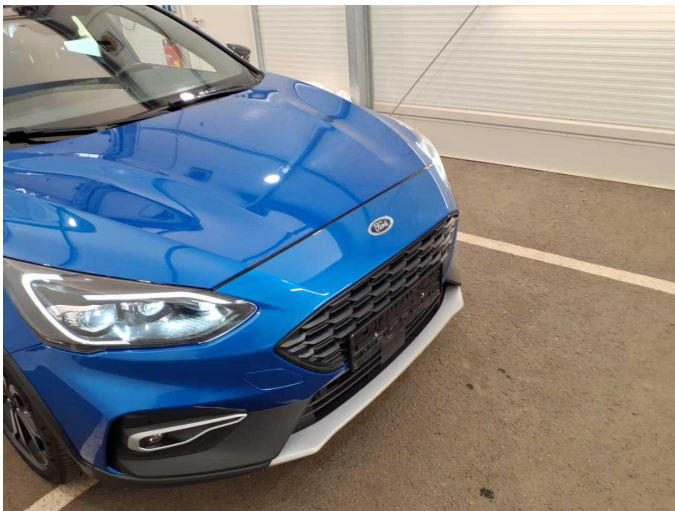
Damage 1: Equipment: Tirefit filler - Expired - Replace



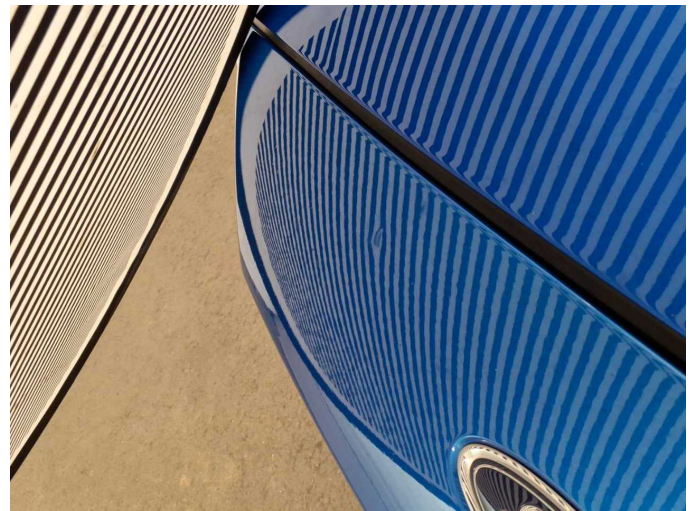
Damage 2: Side panel - rear right side: Side panel - Scratch(es) - Smart repair



Damage 2: Side panel - rear right side: Side panel - Scratch(es) - Smart repair



Damage 3: Front bumper: Front bumper - Deformed - Repair and paint



Damage 3: Front bumper: Front bumper - Deformed - Repair and paint



Wartungshistorie

(gemäß Auftraggeber Informationen)

Fahrgestellnummer: WF0PXXGCHPMG57692
Hersteller / Modell: FORD FORD Focus Turnier 1.0 EcoBoost Start-Stopp-System Aut. ACTIVE X

| Datum | KM-Stand | Beschreibung |
|------------|----------|---|
| 04.05.2026 | 123.989 | Bremsflüssigkeit; Bremsflüssigkeit ern; Luftfiltereinsatz ern; Motoröl b. Wartung; Ölfilter ern; Regelwartungsdienst; Wartung Sonstiges |
| 03.11.2025 | 107.971 | Batterie ern; Motoröl b. Wartung; Ölfilter ern; Regelwartungsdienst; Wartung Sonstiges |
| 28.03.2025 | 87.001 | Bremsklötze hinten; Bremsscheiben + Klötze h; Bremsscheiben hinten |
| 30.01.2025 | 80.995 | HU + AU |
| 16.01.2025 | 80.963 | Bremsflüssigkeit; Getriebeöl ern/prüfen; Motor ern; Motoröl b. Wartung; Reparatur Sonstiges; Systemtest/Eigendiagnose; Zündkerzen ern |
| 01.08.2024 | 72.045 | Bremse Sonstiges; Bremsflüssigkeit; Bremsflüssigkeit ern; Bremsklötze vorne; Bremsscheiben + Klötze v; Bremsscheiben vorne; Luftfiltereinsatz ern; Motoröl b. Wartung; Ölfilter ern; Regelwartungsdienst; Wartung Sonstiges; Zündkerzen ern |
| 08.08.2023 | 42.561 | Motoröl b. Wartung; Ölfilter ern; Regelwartungsdienst; Wartung Sonstiges |