

» Overview

Order number: 1002434263
Order completed: 29.04.2026 11:23
Report number: 10516428
VIN: TMBJG8NX0PY094512



Front Left 3/4



Rear Right 3/4



Mileage

» Vehicle Data

Vehicle category:	Passenger Car
Vehicle type:	EstateCar
Make:	Skoda
Model:	Octavia
Manufacturers and type code:	8004 / AWK
Date of first registration:	02.05.2023
Mileage:	124,041 km
Proof of mileage:	ReadOff
Exterior colour:	Schwarz-Magic Perleffekt
Roof colour:	Schwarz-Magic Perleffekt
Propulsion:	Front
Fuel:	Diesel
Engine size (cc):	1,968 ccm
Performance:	85 kW (116 PS)
Length:	
Height:	
Width:	
Permitted total weight:	
Wheelbase:	
Number of powered axles:	2
Cylinders:	4
Euronorm:	Euro 6
Number of doors:	4
Number of seats:	5
Gearbox:	Manual 6-speed
Upholstery type:	Lining fabrics
Interior colour:	Schwarz
Number of keys:	3

» Documents & Maintenance

Statutory inspection date:	
Registration certificate available:	Yes
Registration certificate received:	Yes
License plate:	Both
Maintenance book:	Digital
Maintenance:	Not testable
Maintenance last date:	
Maintenance last mileage:	

"CRUISE CONTROL" with speedlimiter	Door and side trim panel (umbrella)
"DRIVER ALERT" - driver alert system	Driver knee airbag
"FRONT ASSIST" - with warning and braking reaction to vehicles, pedestrians and cyclists	Driving on the right
"REAR LIGHT VIEW"	Electronic differential lock XDS, dynamic traction support
"REAR VIEW"	Electronic immobilizer
"SMART LINK" (wired and wireless connect)	Emergency call system eCall+
"SUNSET"	Emission standard EU6 AP
12-volt socket in luggage boot	Equipment options subset for Germany
3-point seat belt for center rear seat	Exterior mirror housings and various add-on parts in body color
3-point seat belts in front, with tensioner and height adjustment	Exterior mirrors: convex on driver side, convex on front passenger side
3-point seat belts, outer rear with ECE label	Exterior rear view mirrors; glass el. adjusted, housing el. powerfolded
4 doors	External, USB type C, only data socket(s)
4-cyl. turbo dies. eng. 2.0 l/85 kW (4V) TDI common rail base engine is T0N/T6M/TL4/TR1/T3Y	Freely programmable instrument cluster Medium
4-cylinder diesel engine 2.0 l unit 05L.C	Front fog lamps
6-speed manual transmission	Front head restraints
8 speakers (passive)	Front stabilizer bar
Adapter	Front-wheel drive
Additional exterior noise suppression	Fuel system for diesel engine
Additional retro-reflectors (door area)	Gearshift knob/handle in leather
Additional stone guard body covers	Headlight range control
Alloy wheels "TWISTER AERO" 7J x 16" - 4 pcs	Heated windscreen washer nozzles
Alternator 140 A	Heat-reflecting windshield
Antenna for FM reception only, diversity	Hill hold assist
Basic equipment variant	Increase in initial standard fuel filling (10L)
Battery 380 A (68 Ah)	Independent heating with remote control (+Increase in initial standard fuel filling 10L)
Black decorative trims	Infotainment Columbus w/o VC
Black roof rails	Installation differentiation for transmission MQ 281 -- vehicle components --
Brake control system for vehicles without electric drive (ESC and electromechanical brake booster)	Instrument cluster, km/h speedometer
Breakaway interior rearview mirror, auto-dimming	Keyless locking and starting system "Keyless Advanced" without SAFELOCK
Center armrest in front	Lane Assist (without HOD)
Center console	Leather multi-function steering wheel, heated
Child seat anchors f. child seat system i-Size, 2x top tether and child seat anchors in front on front passenger side	LED headlamps
Climatronic with impact pressure control, CFC-free	LED rear combination lamp, variable lighting functions, special styling
Comfort equipment	Left-hand drive
Comfort telephony with LTE and wireless charging	LongLife Service Regime
Curb weight range 1	Luggage compartment cover, sliding
DAB - Digital radio reception	Luggage compartment floor covering in needle-punched nonwoven (dimensionally stable)
Decorative aluminum inserts	Luggage compartment lighting
Disc brakes in front (Geomet D)	Manual child safety lock
Disc brakes in rear	

Manual height adjustment for front seats	Standard bumpers
Manual in German	Standard climatic zones
Manually adjustable lumbar support in front seats	Standard dashboard
Mass damper for steering wheel, XX Hz	Standard electronic engine sound
Nameplate set in basic style	Standard manufacturing sequence
Navi Columbus + Web radio	Standard paint coating
Net partition	Standard pedal cluster
Net program + cargoelements	Standard rear axle
No special edition	Standard rear seat release
No special purpose vehicle, standard equipment	Standard seats in front
Not hot country	Standard wheel bolts
Operating permit, alteration	Start-stop system with regenerative braking
Operating voltage 12 V	Steel temporary spare wheel, car jack, wheel wrench
Optional infotainment system (MIB3)	Storage compartments in trunk
Park distance control in front and rear	Sun visors with mirror and airbag label on front passenger side
Parking brake	Suspension range 06 installation control only, no requirement forecast
Parking heater with radio remote control	Tailgate/trunk lid release from inside (electrically)
Part set without country-specific prescriptive standard	Three rear head restraints
Power windows with comfort operation and circuit breaker	Tire pressure monitoring system
Rear axle weight, type 1	Tire suppliers for EU countries
Rear exhaust tailpipe (standard)	Tires 205/60 R16 92V
Rear floor panel module, type 4	Tool kit and jack
Rear fog light on one side, back-up light on both sides	Tow bar swiveling, el. unlockable and with adapter
Rear shock absorption, basic version 1	Trailer hitch mechanically swiveling and power-detachable
Rear spoiler	Transport
Rear window wiper "AERO"	Transport protection film (minimum protection) with additional transport protection measures
Refrigerant R1234yf	Trims for alloy wheels
Regional code " ECE " for radio	Two-tone horn
Remote Access / Remote Access + Online Infotainment	Type approval country Germany
Remote Access + Infotainment Online 3 years	Unsplit molded headliner
Seat heater for front seats separately controlled	Unsplit rear seat bench, split folding backrest, with center armrest
Seat trim covers in fabric	UWB-capable country and carrier frequency, 433.92 to 434.42 MHz
Separate daytime running light	Variable luggage/load compartment floor
Service indicator 30 000 km or 2 years (variable)	Vehicle class differentiation -5EN-
Shock absorption in front	Vehicles without special upgrade measures
Side airbag in front with curtain airbag and interaction airbag in front	Vent
Small leather package (2 spoke heated multifunction leather steering wheel for radio and telefon)	Visual and acoustic seat belt reminder, electric contact in front and rear
Space-saving spare wheel	Voice control
Special identification label for EC for M1 passenger vehicles	Wagon/Avant
Special interior noise suppression	Weight range 13 installation control only, no requirement forecast
Speed-related variable steering assist (Servotronic)	Wheelbase
Standard battery/alternator capacity	

Windshield wiper intermittent control with light/rain sensor

With bracket

With emergency steering support with turn assist

With multifunction camera

Without maximal speed limitation

Without "drive select"

Without activated carbon canister with SCR

Without add. lights (interior lighting)

Without additional front underbody guard

Without additional malfunction display

Without additional tires

Without alternative drive system

Without backrest release for front seats

Without Car2X

Without charging cable

Without delivery equipment

Without dynamic road sign display

Without electric motor (hybrid)

Without extended safety system

Without floor mats

Without folding table on front seat backrest

Without headlamp washer system

Without head-up display

Without heat accumulator/auxiliary heater

Without interior light in footwell

Without lane change assist

Without light control

Without locking and starting systems

Without mode 3 charging cable

Without mud flap

Without protective film for scuff plate

Without rear stabilizer bar

Without roof insert (standard roof)

Without seat ventilation/massage seat

Without second battery

Without ski bag

Without special body measures

Without storage compartment package/box

Without supertone system and tone sequence control

» Tyres

MOUNTED TYRES

There are currently one or more wheel sets on/in the vehicle that are not included in the scope of delivery.

Make	Location	Position	Type	Rim	Dimensions	Profile depth
Hankook	Front	Left	Winter	Steel	205/60 R 16 92 H	4.0 mm
Hankook	Front	Right	Winter	Steel	205/60 R 16 92 H	4.0 mm
Hankook	Rear	Left	Winter	Steel	205/60 R 16 92 H	6.0 mm
Hankook	Rear	Right	Winter	Steel	205/60 R 16 92 H	6.0 mm

Permitted: Yes

Roadworthy: Yes

UNMOUNTED TYRES

Make	Location	Position	Type	Rim	Dimensions	Profile depth
Goodyear			Summer	Aluminium	205/60 R 16 92 V	4.0 mm
Goodyear			Summer	Aluminium	205/60 R 16 92 V	4.0 mm
Goodyear			Summer	Aluminium	205/60 R 16 92 V	3.0 mm
Goodyear			Summer	Aluminium	205/60 R 16 92 V	3.0 mm

Permitted: Yes

Roadworthy: Yes

SPARE/EMERGENCY TYRE & ACCESSORIES

Spare tyre provided: Yes

Make	Location	Position	Type	Rim	Dimensions	Profile depth
Kumho	Spare		Summer	Steel	205/60 R 16 92 V	7.0 mm

Permitted: Yes

Roadworthy: Yes

Toolkit present: Yes

Jack present: Yes

» Devaluation Factors

Nr	Location	Damage type	Repair type
1	Roof	Dent(s)	Paintless dent repair
2	Side wall RL	Dent(s)	Spot repair
3	Tailgate / Boot	Rust	Spot repair
4	Bonnet	Dent(s)	Paintless dent repair

» Usage Damages

Nr	Location	Damage type	Repair type
1	Inner door sill FL	Scratch(es)	Acceptable
2	Bumper F	Stone chip(s)	Acceptable

» Commercial devaluation

Accidental vehicle:	Yes
Known previous damages:	No
Previous damages detectable:	Yes
Repainting present:	No
Paint thickness measurement performed:	Yes - no abnormalities/deviations

PAINTTHICKNESS MEASUREMENT RESULTS

The measured values were in the usual range.

At least 3 measurements were carried out per component.

» Notes On The Assessment**Details of the assignment and the scope of the assessment:**

The order was placed to prepare a condition report on the described vehicle.

The vehicle condition assessment was carried out in accordance with the order on the basis of the standards for vehicle assessments specified by the client. The expert makes the findings in the individual case on the basis of his own expertise and at his own expert discretion.

Vehicle identification:

TMBJG8NX0PY094512

VIN checked and matches documentation

Vehicle condition:

Average general condition

Inspection condition:

Sufficient

Lifting platform/lifting equipment used:

Yes

Testdrive carried out:

No

Engine test carried out:

Yes

» **Remarks**

This copy was generated electronically. It is valid without an original signature.

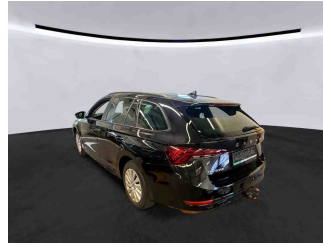
» Commercial Pictures



Front Left 3/4



Front Right 3/4



Rear Left 3/4



Rear Right 3/4



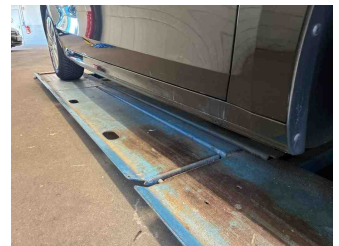
Mileage



Tools



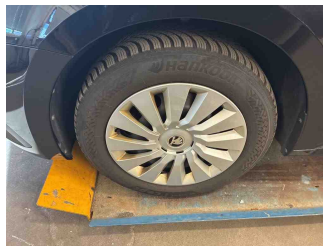
Sill outer L



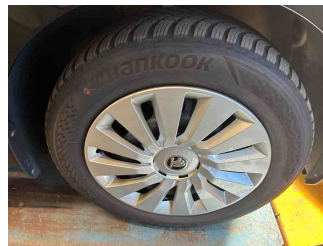
Sill outer R



Chassis nr



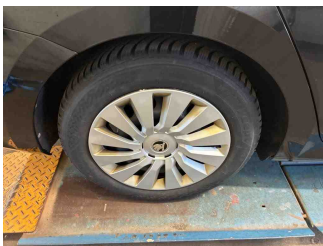
Wheel FL



Wheel FR



Wheel RL



Wheel RR



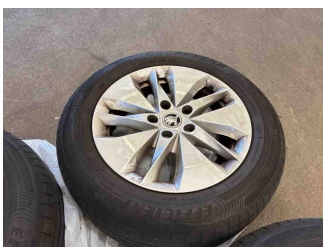
Additional wheel 1



Additional wheel 2



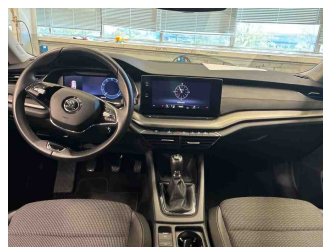
Additional wheel 3



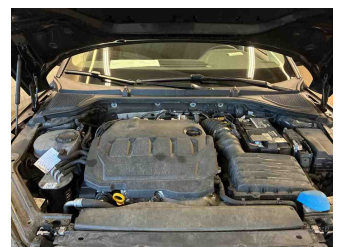
Additional wheel 4



Spare wheel



Central console



Engine compartment

» Devaluation Damages

DEVALUATION FACTORS

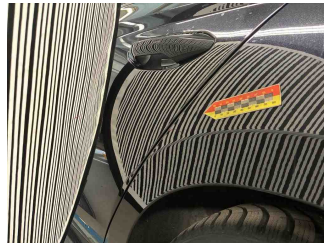
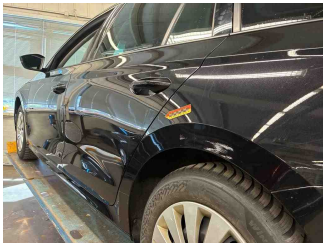
1 - Roof - Dent(s) - Paintless dent repair

Comment

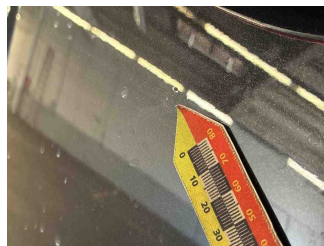
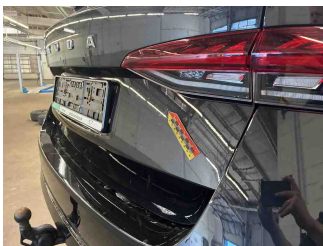
ca 30 Dellen



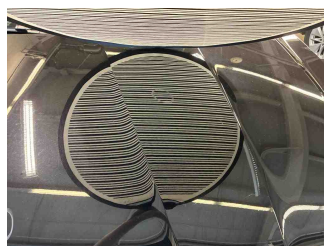
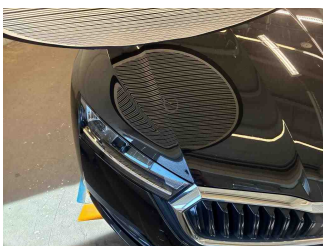
2 - Side wall RL - Dent(s) - Spot repair



3 - Tailgate / Boot - Rust - Spot repair

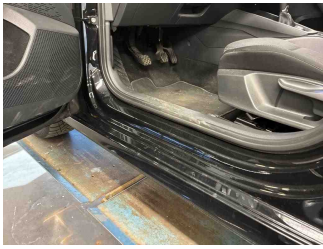


4 - Bonnet - Dent(s) - Paintless dent repair



USAGE DAMAGES

1 - Inner door sill FL - Scratch(es) - Acceptable



2 - Bumper F - Stone chip(s) - Acceptable

