

Expertise

Protocol number: 46366710
Order No. / Reference: 26610988
Inspection date: 3 Jul 2026

Manufacturer: Skoda

Model: Octavia Combi 2.0 TDI DSG 4x4 RS

VIN: TMBLK8NX3RY124080



Vehicle details

Manufacturer / Type / Model / Equipment

Skoda Octavia Combi 2.0 TDI DSG 4x4 RS

Vehicle Identification number TMBLK8NX3RY124080

Mileage (Read) 126,350 km

First registration 4 Mar 2024

Number of holders 1

Next periodical technical inspection 03/2027

Power / Engine displacement 147 kw / 1,968 ccm

Fuel type / Cylinder Diesel / 4

Gearbox / Number of gears Automatic / 7

Type of drive All-wheel drive

Type of vehicle Station wagon

Colour / colour code Candy White (F9E)

Doors / Seats 5 / 5

Upholstery type Cloth

Colour of upholstery Black-Red

Re-import no

readiness to drive Roadworthy



Vehicle details			
Maintenance booklet / proof	digital proof / complete	Next maintenance in	17,800 km
Last service on / at	02/2026 at 114,096 km		
Key is / should be	2 / 2	FZG documents	ZB#2 (B) was available (copy), ZB#1 (S) was not available.
		Letter No.	HB666993
Previous damage / Accident	Detectable	Repainting	Detectable
Inspection conditions	sufficient	Lifting equipment / pit	No
Test drive	Not performed	Engine function test	Performed
readiness to drive	Roadworthy		
Manufacturer key number/ type code number	8004 / AVJ 00143		
Emission standard	EURO6;WLTP;AP;PI/CI; M, N1 I	fine dust sticker	
Permitted total weight	2,100 kg	Empty weight	

Tyres

Mounted tyres				
#	Tyre size	Type of tyre	Manufacturer	Tread depth
1)	225/45 R18 95Y	Summer tyres on Light alloy	Continental	5mm / 5mm
2)	225/45 R18 95Y	Summer tyres on Light alloy	Continental	6mm / 6mm
Replacement				
Typ	Tyre size	Type of tyre	Manufacturer	Tread depth
	Tirefit	Expiration date 11/2027		

Legend: Tread depth information for the left tire is listed first, for the right tire it is listed second on the axle in the direction of travel.

TÜV SÜD Auto Partner GmbH
Wiesenring 2
04159 Leipzig

Inspection location
Hartmann Fleet Professionals GmbH
Leerenstraße 25
29683 Bad Fallingb.otel



Equipment



Standard equipment

- Storage compartment in the luggage compartment
- Airbag for driver and front passenger (passenger airbag can be deactivated)
- Airbag, driver's knee airbag
- Airbag, head airbags
- Airbag: Center airbag front
- Ambient lighting (dashboard, front trim strips and footwell with selectable color climate) in the interior as well as logo projector on the outside)
- Electrically adjustable and heated exterior mirrors
- Electrically folding exterior mirrors
- Glasses compartment in the headliner
- black headliner
- AERO roof rails in black
- Diesel particulate filter
- Tachometer
- Ice scraper in the fuel filler flap
- Electronic transverse differential lock (XDS+)
- Driving profile selection
- Electric windows front and rear, including anti-pinch protection and child safety lock
- Front radar assistant including city emergency braking function and pedestrian and cyclist detection (including evasive steering and turning assistant)
- Transmission: 7-speed dual-clutch transmission (DSG)
- Green tec: Start/stop system including brake energy recuperation
- Interior features: Design Selection RS (fabric seat covers - microfiber-covered dashboard center section - red decorative stitching in the interior - dark carbon trim strip)
- Kessy, keyless entry and start-stop system
- Climatronic air conditioning (2-zone) (fully automatic, separately adjustable for driver and front passenger, and with anti-allergen filter & activated carbon filter)
- LED matrix headlights and dynamic high beam assist (AFS) (Dynamic and automatic headlight range control - headlight cleaning system including washer fluid level control)
- Two reading lights at the front (including reading lights at the rear - trunk lighting)
- Multi-collision brake
- Front and rear parking sensors
- Progressive steering
- Radio accessories: 2 USB ports at the front
- Radio accessories: 8 speakers
- Radio accessories: Bluetooth hands-free system
- Radio accessories: Wireless & Wired SmartLink (Apple CarPlay, Android Auto)
- Tire pressure monitoring
- Wheels: 18" Comet alloy wheels, black (7.5J x 18, ET 48 with 225/45 R18 tires)
- Safety lights in the front side doors
- Storage compartments (storage compartments in the front door panels with 1.5l bottle holders, storage compartments in the rear door panels with 0.5l bottle holders, storage compartments in the doors with felt lining)
- Airbag, front side airbags
- All-wheel drive 4x4
- Anti-lock braking system (ABS)
- Traction control (ASR)
- Automatically dimming exterior mirror (driver's side)
- Exterior mirrors painted black, door handles in body color
- Hill start assist
- Four roof grab handles (rear with coat hooks, ticket holder on the windshield)
- AERO roof rails in gloss black
- Digital Cockpit Plus
- Third brake light
- Electronic parking brake including auto-hold function
- Electronic Stability Control (ESC)
- Chassis: Sport chassis (sporty damper tuning, ground clearance reduced by approximately 15mm)
- Dynamic High Beam Assist (Dynamic Light Assist)
- Front and rear footwell lighting
- Removable luggage roller blind
- Cruise control system (cruise control) including speed limiter
- Heated rear window
- Rear window wiper including windshield washer system
- Interior mirror automatically dimming
- ISOFIX preparations on the front passenger seat and the outer rear seats including top tether anchorage
- Child safety lock for the rear doors and windows
- Black radiator grille frame
- Paint finish: Special paint finish, solid color
- LED taillights in crystal glass look
- Remote release of the rear seat backrests in the trunk
- Steering wheel: Height and reach adjustable leather steering wheel with multifunction buttons including paddle shifters.
- Front center armrest, including storage compartment
- Engine drag torque control (MSR)
- Fatigue detection
- Pedals in stainless steel look
- Radio: Infotainment system (with infotainment display 10")
- Radio accessories: 2 x USB charging ports in the rear and USB charging port in the rearview mirror
- Radio accessories: Digital radio reception DAB+
- Umbrella and broom compartments in the front doors
- Rain sensor and driving light assistant (Easy Light Assist)
- Tire mobility kit (tire repair spray incl. compressor)
- Electromechanical power steering



- Seats: Heated front seats
- Seats: Rear seat backrest split 60:40 and foldable (with center armrest and pass-through option)
- Seats: Pockets on the backs of the front seats including smartphone pockets
- SKODA Care Connect (SOS emergency call function (Emergency Call incl. automatic activation in the event of an accident with airbag deployment), Mobility service (connection for rapid assistance in case of breakdown), Information service (connection to the hotline for all questions relating to vehicle functions), Free remote vehicle access for 1 year (Remote Access) with access to vehicle data and functions via smartphone, e.g. parking position, activating hazard warning lights, current fuel level)
- Glazing: Acoustic glazing in the front side windows and Sunset (dark tinted rear window and rear side windows)
- Central locking including remote control integrated into the key and EASY Start

Extra equipment

- Swiveling trailer hitch including trailer stabilization and adapter
- Luggage securing net and rubberized suitcase
- Loading edge protection film including installation
- Package: Comfort Plus (Combi) (3-zone Climatronic - Heated outer rear seats - Heated steering wheel - 230 V socket and 3 x USB charging ports - Sunshades in the rear doors - Multifunctional storage compartment in the boot - Electric tailgate operation with comfort opening - Sleeping headrests in the rear)

- Seat belts (Height-adjustable three-point seat belts in the front, with belt tensioners - Three three-point seat belts in the rear - Seat belt reminder indicators in all seats)
- Seats: Sports seats with integrated headrests in the front and height-adjustable headrests in the rear.
- Seats: Front seats are height-adjustable (with adjustable lumbar support)
- Sun visors with illuminated make-up mirror on driver and passenger side
- Sound generator in the interior
- Lane keeping assistant (Lane Assist)
- 12V socket in the trunk
- Telephone: Phonebox with inductive charging function (connection via external antenna)
- Textile floor mats
- Front door sill trims
- Lashing eyes in the trunk
- Immobiliser

- Stainless steel footrest including installation
- Luggage net partition
- Clothes hanger
- Package: Infotainment package Business Columbus (Style, RS, Scout) (Columbus navigation system - Infotainment Online (3-year term) - 3 USB charging ports - Head-Up Display - Adaptive Cruise Control (ACC) - Traveller Assist system)
- Auxiliary heater with radio remote control

Brief expert findings

Documents submitted	At the time of the inspection, the vehicle registration certificate Part 2 (title) was available, but the vehicle registration certificate Part 1 (document) was not. (Copy)
VIN comparison	The vehicle identification number (VIN) was read from the vehicle and its conformity with the submitted documents was confirmed by the undersigned during the inspection.
Inspection	The inspection conditions were sufficient for the assessment of the vehicle. No lifting equipment or pit was available for inspecting the vehicle. Therefore, inspection of the vehicle's underside was only possible to a limited extent.
Test drive	No test drive/shunting maneuver was carried out during the inspection of the vehicle.
Engine function test	An engine test run was performed.
readiness to drive	The vehicle was roadworthy at the time of inspection.



Value reducing factors

No.	Component group	Description
1	Door - rear right side	Door - Scratch(es) - Smart repair
2	Body	Body - Stone chips - Conditioning
3	Interior	Interior (Rauch) - Odour - Ozone treatment
4	Equipment	Vehicle key (Beide Schlüssel) - Scratch(es) - Loss in value
5	Body	A-pillar - right side - Corrosion - Repair and paint
6	Side panel - rear right side	Side panel - Scratch(es) - Paint
7	Rear bumper	Rear bumper (Inklusive anbauteile) - Dent / paintcoat damage - Repair and paint
8	Bonnet	Bonnet - Dent / paintcoat damage - Repair and paint
9	Roof	Roof - Corrosion - Repair and paint

Wear and tear

No.	Component group	Description
1	Door - rear left side	Door - dent(s) - No deduction
2	Vehicle glazing	Windscreen - Stone chips - No deduction

The vehicle shows signs of wear and tear commensurate with its age and use.

Missing parts

Description

Equipment - Umbrella

Previous damages

No.	Previous damage	Extent of damage (Net)
1	Front, Side - left, Provided by user / customer, from 11 Mar 2026	4.972,72 €

Repainting

No. Repainting

1	Mudguard - left side, Professionally carried out, Invoice of repair done Non-existent
2	Door - front left side, Professionally carried out, Invoice of repair done Non-existent

Paint coat thickness measurement

Mudguard - left side	179 µm	Door - front left side	198 µm
----------------------	--------	------------------------	--------

Order/Scope of Order

An order was placed to prepare a sales report for the described vehicle. This report includes the following:

- Description of key vehicle information
- Documentation of equipment features
(*Delivery by third-party service providers*)
- Documentation of damage, defects, missing parts
- Documentation of prior damage, unrepaired prior damage, repainting
- A brief visual or functional inspection of the equipment details, if possible.
(*Functional testing of driver assistance systems is not included in the scope of services!*)
- a photographic documentation of the vehicle



Basis for the order

This product is based on the guidelines for vehicle returns and valuations published by Alphabet Fleet GmbH. The expert makes the specific findings in each individual case objectively, within the framework of the prescribed standards, based on their own expertise.

The vehicle inspection takes place in a fully assembled, unassembled state.

Damage or defects that can only be detected during disassembly/diagnostic work or through further investigation remain within the realm of prognostic risk. An increased risk exists due to concealed defects caused by fraudulent misrepresentation and which were not identifiable by the expert.

Damage or defects resulting from normal use or wear and tear of the vehicle will be accepted in accordance with the applicable standard.

There was no explicit identification or monetary consideration of the expected features within the product.

Features which, in their nature and extent, slightly exceed normal use but do not constitute unacceptable damage, will be documented and indicated as signs of wear, if applicable.

Damage or defects that, according to the applicable standard, can no longer be attributed to normal use or wear and tear are listed under "Value Reducing Factors" in the product description.

Depending on the product specification, a monetary ID can be provided. If this takes place, the costs can be 100% d or pro rata depending on the vehicle's age and mileage.

Previous damages

According to available information previous damages were repaired at the vehicle. Traces of repairs, which allow conclusions about the area of repair, were not recognizable during the inspection.



Figure 1: Diagonal front (left)



Figure 2: Diagonal front (right)



Figure 3: Diagonal rear (left)



Figure 4: Diagonal rear (right)



Figure 5: Interior - front



Figure 6: Interior - rear



Figure 7: Instrument cluster



Figure 8: Instrument panel



Figure 9: Interior 360° view

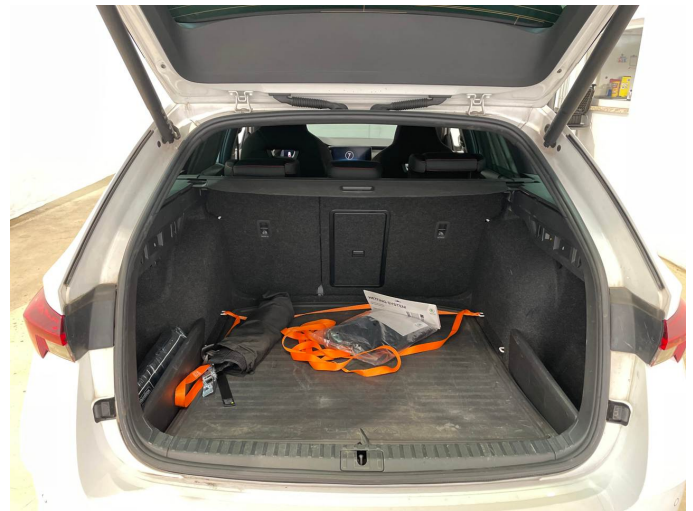


Figure 10: Cargo area

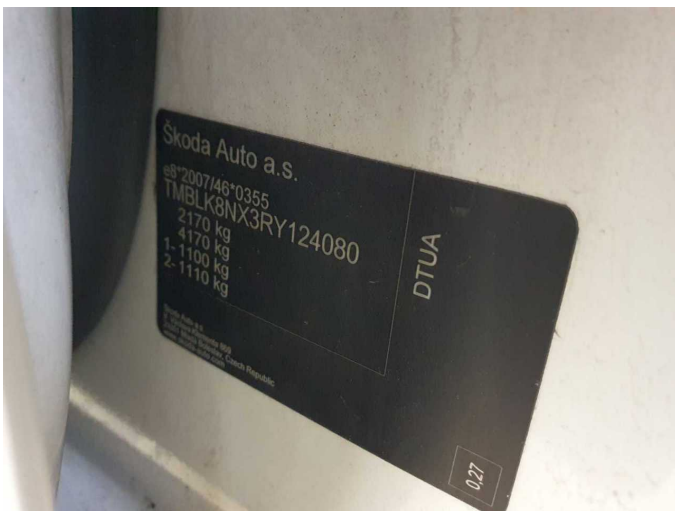


Figure 11: VIN



Figure 12: Mounted tyres



Figure 13: Documents



Figure 14: Documents

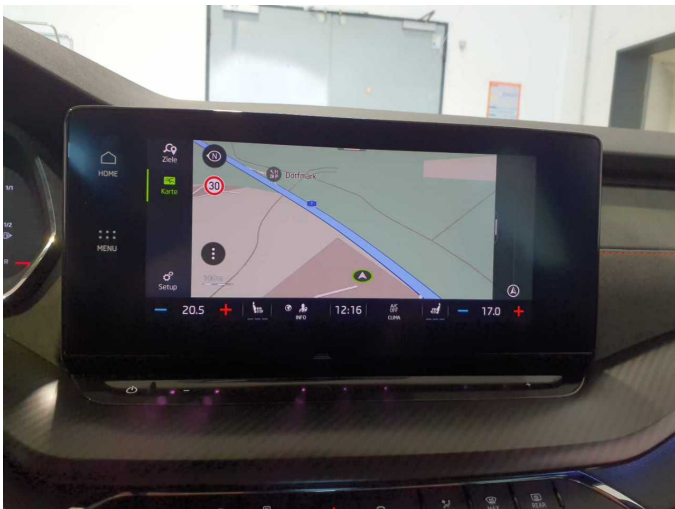


Figure 15: Navigation



Figure 16: Misc.



Figure 17: Misc.



Figure 18: Misc.



Figure 19: Misc.



Figure 20: Misc.



Figure 21: Misc.



Figure 22: Misc.



Figure 23: Misc.

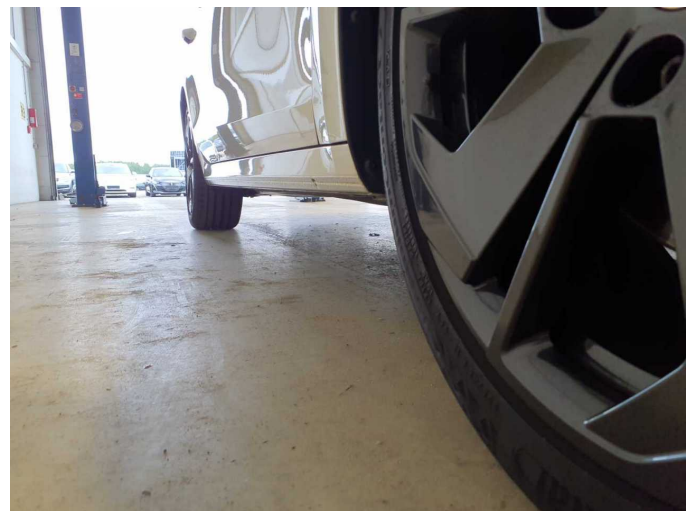


Figure 24: Misc.



Figure 25: Misc.



Figure 26: Misc.

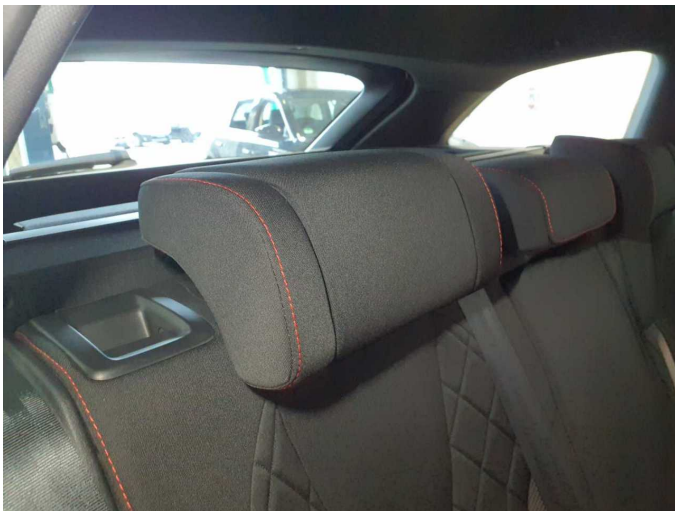


Figure 27: Misc.

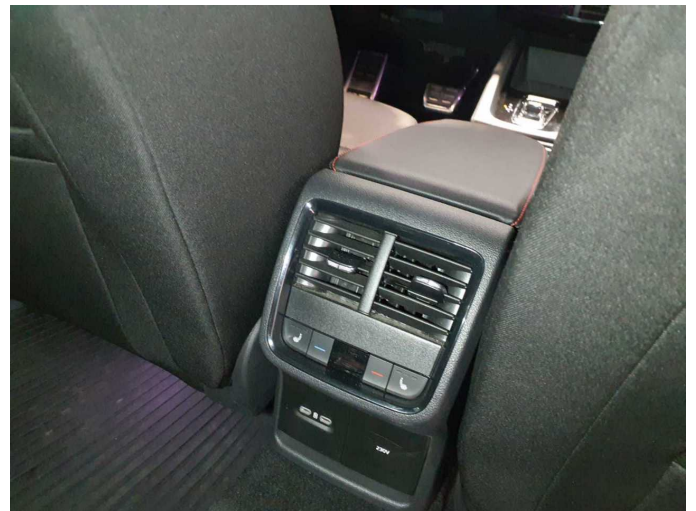


Figure 28: Misc.

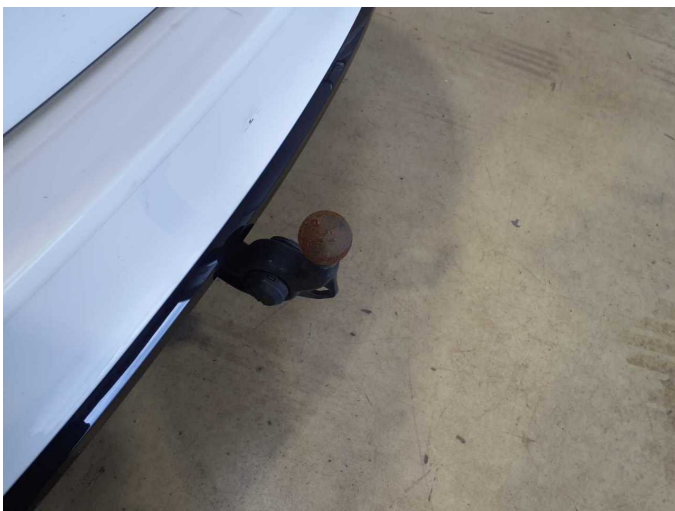


Figure 29: Misc.



Figure 30: Misc.



Figure 31: Misc.



Figure 32: Misc.



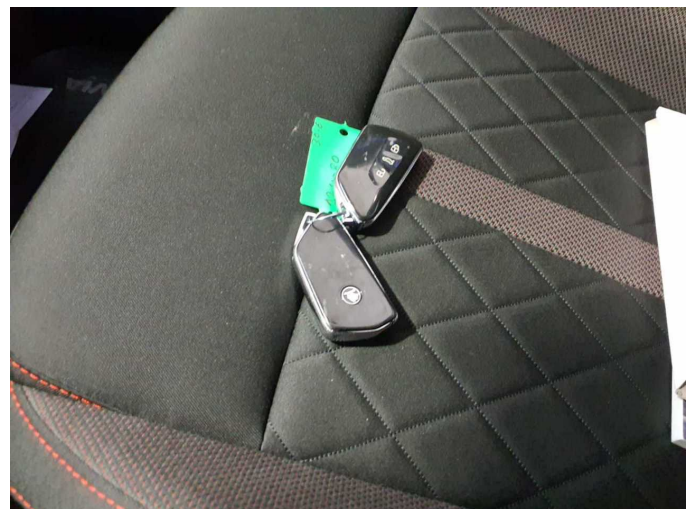
Damage 1: Door - rear right side: Door - Scratch(es) - Smart repair



Damage 1: Door - rear right side: Door - Scratch(es) - Smart repair



Damage 2: Body: Body - Stone chips - Conditioning



Damage 4: Equipment: Vehicle key (Beide Schlüssel) - Scratch(es) - Loss in value



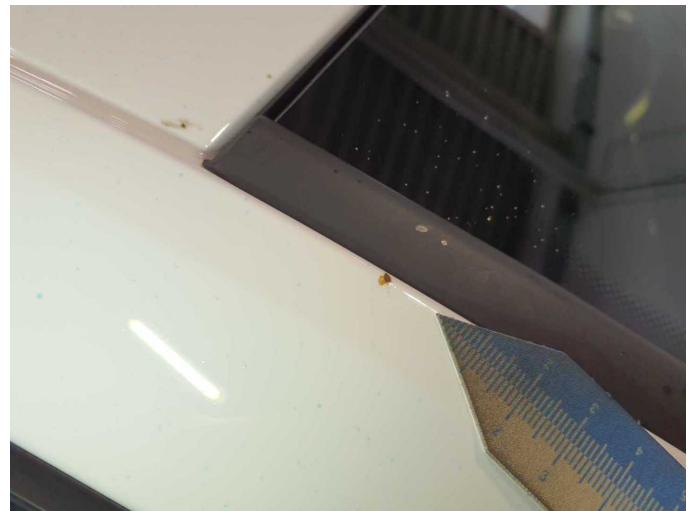
Damage 4: Equipment: Vehicle key (Beide Schlüssel) - Scratch(es) - Loss in value



Damage 4: Equipment: Vehicle key (Beide Schlüssel) - Scratch(es) - Loss in value



Damage 5: Body: A-pillar - right side - Corrosion - Repair and paint



Damage 5: Body: A-pillar - right side - Corrosion - Repair and paint



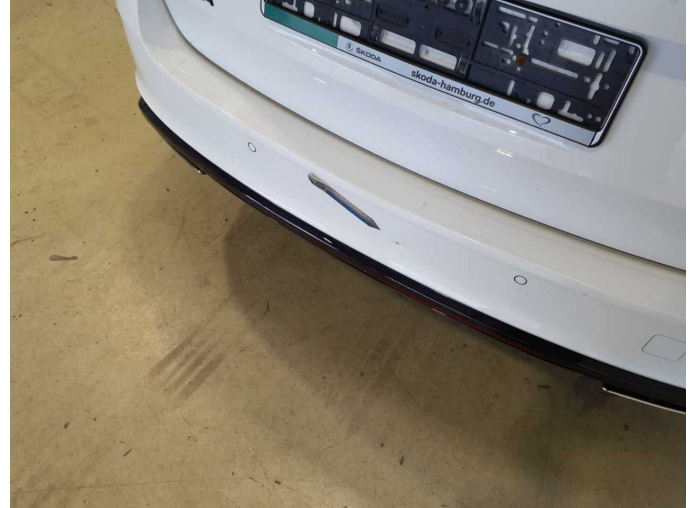
Damage 6: Side panel - rear right side: Side panel - Scratch(es) - Paint



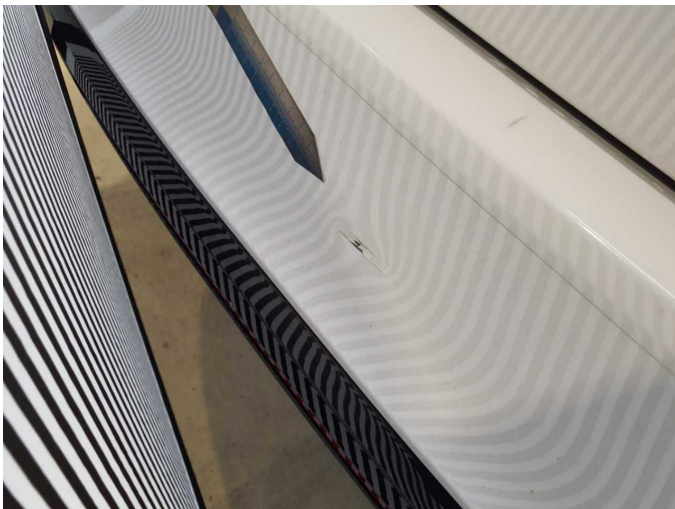
Damage 6: Side panel - rear right side: Side panel - Scratch(es) - Paint



Damage 6: Side panel - rear right side: Side panel - Scratch(es) - Paint



Damage 7: Rear bumper: Rear bumper (Inklusive anbauteile) - Dent / paintcoat damage - Repair and paint



Damage 7: Rear bumper: Rear bumper (Inklusive anbauteile) - Dent / paintcoat damage - Repair and paint



Damage 7: Rear bumper: Rear bumper (Inklusive anbauteile) - Dent / paintcoat damage - Repair and paint



Damage 7: Rear bumper: Rear bumper (Inklusive anbauteile) - Dent / paintcoat damage - Repair and paint



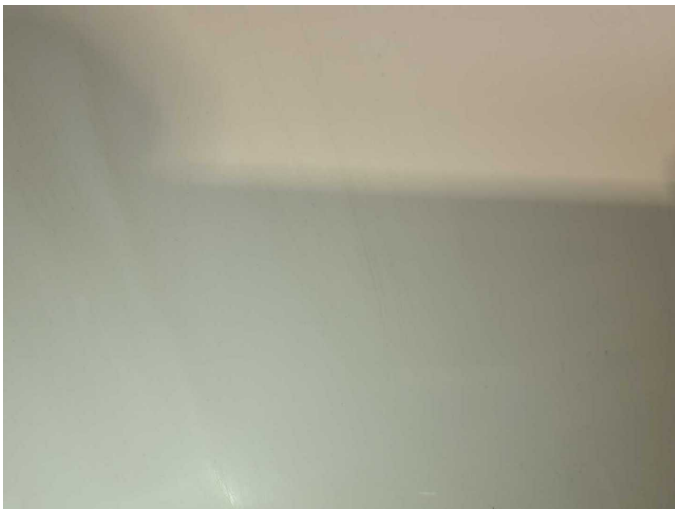
Damage 8: Bonnet: Bonnet - Dent / paintcoat damage - Repair and paint



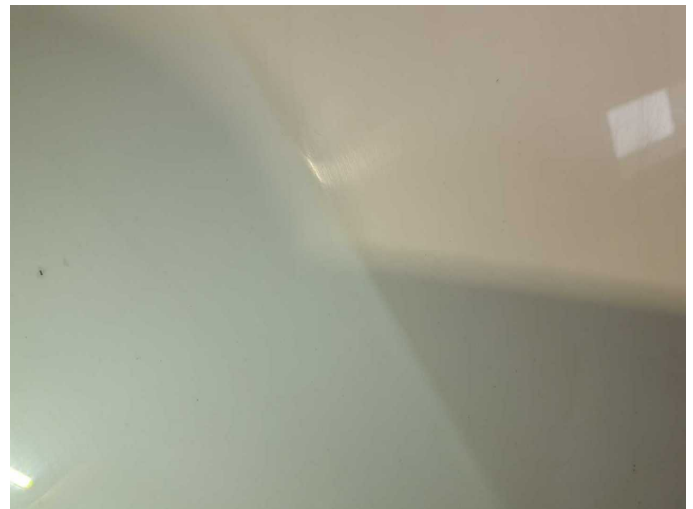
Damage 8: Bonnet: Bonnet - Dent / paintcoat damage - Repair and paint



Damage 8: Bonnet: Bonnet - Dent / paintcoat damage - Repair and paint



Damage 8: Bonnet: Bonnet - Dent / paintcoat damage - Repair and paint



Damage 8: Bonnet: Bonnet - Dent / paintcoat damage - Repair and paint



Damage 8: Bonnet: Bonnet - Dent / paintcoat damage - Repair and paint



Damage 9: Roof: Roof - Corrosion - Repair and paint



Damage 9: Roof: Roof - Corrosion - Repair and paint



Damage 9: Roof: Roof - Corrosion - Repair and paint



Damage 9: Roof: Roof - Corrosion - Repair and paint



Missing part 1: Equipment: Umbrella - Missing - Replace



Repainting 1: Mudguard - left side



Repainting 1: Mudguard - left side



Repainting 2: Door - front left side



Repainting 2: Door - front left side