

Expertise

Protocol number: 45335698
Order No. / Reference: 26165557
Inspection date: 4 May 2026

Manufacturer: Skoda

Model: Superb Combi 2.0 TDI DSG L&K

VIN: TMBJR7NPXN7020201



Vehicle details

Manufacturer / Type / Model / Equipment

Skoda Superb Combi 2.0 TDI DSG L&K

Vehicle Identification number TMBJR7NPXN7020201

Mileage (Read) 161,937 km

First registration 8 Mar 2022

Number of holders 1

Power / Engine displacement 147 kw / 1,968 ccm

Fuel type / Cylinder Diesel / 4

Gearbox / Number of gears Automatic / 7

Type of drive Front drive

Type of vehicle Station wagon

Colour / colour code Moon-Weiß Perleffekt

Doors / Seats 5 / 5

Upholstery type Leather

Colour of upholstery Black-Anthracite

readiness to drive Roadworthy



Vehicle details

Maintenance booklet / proof	digital proof / complete	Next maintenance in	20,200 km
Last service on / at	11/2025 at 152,062 km		
Key is / should be	3 / 3	FZG documents	ZB#2 (B) was available (copy), ZB#1 (S) was not available.
		Letter No.	GG203232
Previous damage / Accident	Detectable	Repainting	Detectable
Inspection conditions	sufficient	Lifting equipment / pit	No
Test drive	Not performed	Engine function test	Performed
readiness to drive	Roadworthy		
Manufacturer key number/ type code number	8004 / AWB 00226		
Emission standard	EURO6;WLTP;AP;PI/CI; M, N1 I	fine dust sticker	
Permitted total weight	2,237 kg	Empty weight	

Tyres

Mounted tyres

#	Tyre size	Type of tyre	Manufacturer	Tread depth
1)	215/55 R17 98V	Winter tyres on Light alloy	Semperit	2mm / 2mm
2)	215/55 R17 98V	Winter tyres on Light alloy	Continental	7mm / 7mm

Additional tyres

#	Tyre size	Type of tyre	Manufacturer	Tread depth
1)	235/45 R18 94W	Summer tyres on Light alloy	Continental	5mm / 5mm
2)	235/45 R18 94W	Summer tyres on Light alloy	Continental	5mm / 5mm

Replacement

Typ	Tyre size	Type of tyre	Manufacturer	Tread depth
Tirefit		Expiration date 09/2025		

Legend: Tread depth information for the left tire is listed first, for the right tire it is listed second on the axle in the direction of travel.



Equipment

Standard equipment

- Closed storage compartments behind the wheel arches in the trunk, including cargo elements
- Airbag, driver and switchable passenger airbag
- Airbag, driver's knee airbag
- Airbag, head airbags
- Airbag, front side airbags
- Anti-lock braking system (ABS)
- Traction control (ASR)
- Electrically adjustable and heated exterior mirrors
- Exterior mirrors and door handles in body color
- Electrically folding exterior mirrors (with boarding lights - interior and exterior mirrors with automatic dimming)
- Hydraulic brake assist (HBA)
- Roof rails, anodized
- Diesel particulate filter and SCR catalyst
- Tachometer
- Dynamic Light Assistant (Masked Continuous High Beam)
- Electronic parking brake including auto-hold function
- Electronic Stability Control (ESC)
- Driving profile selection including customizable key (Normal, Eco, Sport, Individual) (incl. additional key)
- Electric windows front and rear, including anti-pinch protection and child safety lock
- Front radar assist including city emergency braking function (The front radar assist warns of impending collisions and initiates braking to reduce the force of an unavoidable impact. The front radar assist continuously monitors the distance to the vehicle ahead using a radar sensor integrated into the radiator grille.)
- Rear window wiper including windshield washer system
- Kessy, keyless entry and start-stop system
- Child safety lock for rear doors & windows, electric
- Front and rear headrests are height-adjustable.
- LED taillights in crystal glass look and animated turn signals
- Remote release of the rear seat backrests in the trunk
- Steering wheel: 2-spoke leather steering wheel with multifunction buttons (including gearshift and handbrake levers in leather)
- Matrix LED headlights (AFS - dynamic high beam assist - automatic headlight range control - headlight cleaning system - LED taillights in crystal glass look - incl. dynamic turn signals)
- Multi-collision brake
- Front and rear parking sensors
- Radio: Bolero infotainment system (capacitive 8" touch display in glass design - Wireless Smartlink (Apple CarPlay, Android Auto))
- Radio accessories: Digital radio reception DAB+
- Radio accessories: SmartLink+ (Apple CarPlay - Android Auto - MirrorLink - SmartGate)
- Radio accessories: Wireless SmartLink for Apple CarPlay
- Storage compartments (ticket holder on the windshield, 4 roof grab handles, rear with coat hooks, coat hooks on the B-pillar, holder for the warning vests in the front doors, glasses compartment in the headliner, storage compartments in the door panels (front and rear) with 1.5l bottle holders, cup holder in the front center console with easy-open bottle opening, storage pockets on the front seat backrests, storage compartments behind the wheel arches in the trunk including cargo elements, illuminated trunk)
- Illuminated glove compartment
- Hill start assist
- Grey headliner
- Decorative inlay Piano Black
- Digital instrument cluster (Virtual Cockpit) 10.2"
- Third brake light
- Electric tailgate opening
- Electronic transverse differential lock (XDS+)
- Driving light assistant and rain sensor (tunnel light, coming and leaving home function)
- Chassis: Adaptive chassis DCC (10 mm lowering, adjustable damper setting) (including driving profile selection (Normal, Comfort, Eco, Sport, Individual))
- Front footwell lighting
- Cruise control system (cruise control) including speed limiter
- Transmission: 7-speed dual-clutch transmission (DSG)
- Tinted windows
- Heated rear window
- ISOFIX preparation on the outer rear seats, including top tether
- Boot cover, roll-up and removable, semi-automatic
- LED ambient lighting (dashboard and decorative trim with selectable color climate, reading lamps, door handles and footwell as well as sun visors with LED lighting - projection of the SKODA lettering from the underside of the door onto the ground (front doors))
- Steering wheel: height and reach adjustable
- Reading lights at the front and rear of the headliner
- Rear center armrest with cup holders and pass-through option
- Front center armrest with storage compartment
- Engine drag torque control (MSR)
- LED fog lights with integrated cornering lights
- Upholstery: Executive leather interior (combined with high-quality materials)
- Radio: CANTON sound system (11 speakers - 1 subwoofer - digital equalizer 610W)
- Radio accessories: In-car communication
- Radio accessories: USB ports at the front (Type-C) and USB charging port (Type-A) in the center armrest
- Tire pressure monitoring



- Tire mobility kit (tire repair spray incl. compressor)
- Heated windshield washer nozzles
- Electromechanical power steering
- Seats: Heated front seats
- Seats: Adjustable lumbar support in the front seats
- Seats: Electrically adjustable front seats with memory function
- SKODA Care Connect (SOS emergency call function (Emergency Call incl. automatic activation in the event of an accident with airbag deployment), Mobility service (connection for rapid assistance in case of breakdown), Information service (connection to the hotline for all questions relating to vehicle functions), Free remote vehicle access for 1 year (Remote Access) with access to vehicle data and functions via smartphone, e.g. parking position, activating hazard warning lights, current fuel level)
- Chrome-plated elements (on air vents, light switches, music or navigation systems, air conditioning)
- Central locking with remote control

Extra equipment

- Towbar preparation
- Extended warranty for 2 years, max. 90,000 km
- Anti-theft alarm system with SAFE system, interior monitoring and tilt sensor
- Climatronic air conditioning (3-zone)
- Paint finish: Pearl effect
- Price correction for model year 2022
- Reversing camera with washer nozzle
- Seats: Manual seat length adjustment for the electric front seats including massage function (including massage function for the driver's seat)
- Lane keeping assist, lane change assist, parking assist
- Variable loading floor in the trunk including organizer
- Traffic sign recognition
- Winter wheels on 17" alloy wheels including installation

- Wheels: 18" Propus Aero alloy wheels (8J x 18" ET 44 with 235/45 R18 tires)
- Superb safety belts (Height-adjustable three-point front seat belts with belt tensioners - Three three-point rear seat belts - Belt fastening indicator for all seats)
- Seats: Height-adjustable front seats
- Seats: Rear seat backrest split 60:40, foldable
- Sun visor on driver and passenger side with illuminated make-up mirror
- Start/stop system including brake energy recuperation
- 12V socket in the trunk
- 12V socket in the center console, front and rear
- Sunset (rear window and rear side windows tinted dark)
- Telephone: Convenient hands-free phone system with Bluetooth (without connection to an external antenna)
- Textile floor mats
- Lashing eyes in the trunk
- Immobiliser

- Swiveling trailer hitch including trailer stabilization
- black headliner
- Electric panoramic sunroof including sunshade (elimination of the glasses compartment in the headliner)
- Comfort opening for the tailgate
- Package: Business Columbus (DSG) (Columbus navigation system - voice control - Wi-Fi hotspot - Wireless Smartlink for Apple CarPlay - 9.2" capacitive touchscreen in glass design - Phonebox - Traveller assistance system (traffic sign recognition, predictive lane keeping assist pACC, adaptive lane keeping assist, emergency and traffic jam assist, capacitive steering wheel with hands-off detection) - 230V socket and 3 USB ports, tablet holder - Sunset - Infotainment Online (3-year subscription))
- XOFIX anchorage on the passenger seat

Brief expert findings

Documents submitted	At the time of the inspection, the vehicle registration certificate Part 2 (title) was available, but the vehicle registration certificate Part 1 (document) was not. (Copy)
VIN comparison	The vehicle identification number (VIN) was read from the vehicle and its conformity with the submitted documents was confirmed by the undersigned during the inspection.
Inspection	The inspection conditions were sufficient for the assessment of the vehicle. No lifting equipment or pit was available for inspecting the vehicle. Therefore, inspection of the vehicle's underside was only possible to a limited extent.
Test drive	No test drive/shunting maneuver was carried out during the inspection of the vehicle.
Engine function test	An engine test run was performed.
readiness to drive	The vehicle was roadworthy at the time of inspection.

Value reducing factors



No.	Component group	Description
1	Documents	Service book (Service überzogen 1.Service, 4.Service) - No deduction
2	Equipment	Tirefit filler - Expired - Replace
3	Door - rear left side	Door edge - Scratch(es) - Smart repair
4	Roof	Roof - dent(s) - Smooth repair work
5	2nd wheel set	1 alloy rim - Scratch(es) - Loss in value
6	2nd wheel set	1 alloy rim - Scratch(es) - Loss in value
7	Wheel / tyres	Tyre - front - Worn - Replace
8	Front bumper	Front bumper - Scratch(es) - Paint
9	Side panel - rear right side	Side panel - Dent / paintcoat damage - Repair and paint
10	Side panel - rear left side	Side panel - Corrosion - Repair and paint
11	Vehicle glazing	Windscreen - Stone chips - Replace

Wear and tear

No.	Component group	Description
1	Gearbox	Selector lever - Scratch(es) - No deduction
2	Rear bumper	Rear bumper - Scratch(es) - No deduction
3	Bonnet	Bonnet - dent(s) - No deduction
4	Trim / covers	Boot lining - Abrasion - No deduction

The vehicle shows signs of wear and tear commensurate with its age and use.

Missing parts

Description

Documents - Service book (Digitaler Ausdruck)

Equipment - Umbrella

Previous damages

No.	Previous damage	Extent of damage (Net)
1	Side - left, Provided by user / customer, from 25 Nov 2023	4.520,46 €

Repainting

No. Repainting

- Roof rail - left side, Professionally carried out, Invoice of repair done Non-existent
- Side panel - rear left side, Professionally carried out, Invoice of repair done Non-existent
- Door - rear left side, Professionally carried out, Invoice of repair done Non-existent

Paint coat thickness measurement

Roof rail - left side	222 µm	Side panel - rear left side	354 µm
Door - rear left side	186 µm		



Order/Scope of Order

An order was placed to prepare a sales report for the described vehicle. This report includes the following:

- Description of key vehicle information
- Documentation of equipment features
(Delivery by third-party service providers)
- Documentation of damage, defects, missing parts
- Documentation of prior damage, unrepaired prior damage, repainting
- A brief visual or functional inspection of the equipment details, if possible.
(Functional testing of driver assistance systems is not included in the scope of services!)
- a photographic documentation of the vehicle

Basis for the order

This product is based on the guidelines for vehicle returns and valuations published by Alphabet Fleet GmbH. The expert makes the specific findings in each individual case objectively, within the framework of the prescribed standards, based on their own expertise.

The vehicle inspection takes place in a fully assembled, unassembled state.

Damage or defects that can only be detected during disassembly/diagnostic work or through further investigation remain within the realm of prognostic risk. An increased risk exists due to concealed defects caused by fraudulent misrepresentation and which were not identifiable by the expert.

Damage or defects resulting from normal use or wear and tear of the vehicle will be accepted in accordance with the applicable standard.

There was no explicit identification or monetary consideration of the expected features within the product.

Features which, in their nature and extent, slightly exceed normal use but do not constitute unacceptable damage, will be documented and indicated as signs of wear, if applicable.

Damage or defects that, according to the applicable standard, can no longer be attributed to normal use or wear and tear are listed under "Value Reducing Factors" in the product description.

Depending on the product specification, a monetary ID can be provided. If this takes place, the costs can be 100% d or pro rata depending on the vehicle's age and mileage.

Previous damages

According to available information previous damages were repaired at the vehicle. Traces of repairs, which allow conclusions about the area of repair, were not recognizable during the inspection.



Figure 1: Diagonal front (left)



Figure 2: Diagonal front (right)



Figure 3: Diagonal rear (left)



Figure 4: Diagonal rear (right)



Figure 5: Interior - front



Figure 6: Interior - rear



Figure 7: Instrument cluster



Figure 8: Instrument panel



Figure 9: Interior 360° view



Figure 10: Cargo area

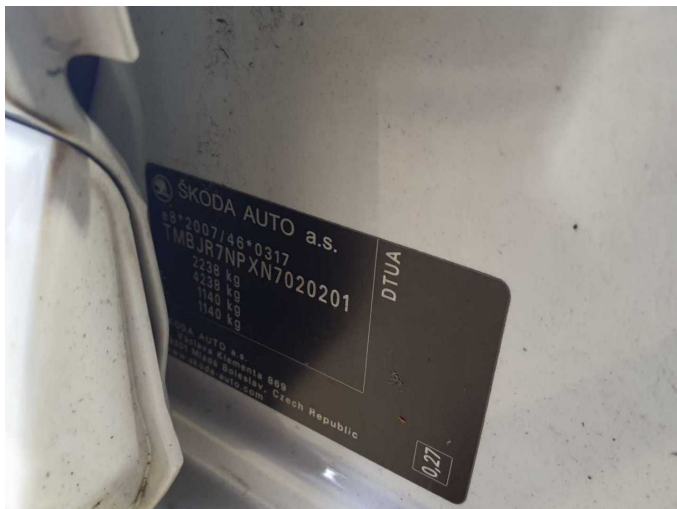


Figure 11: VIN



Figure 12: Mounted tyres

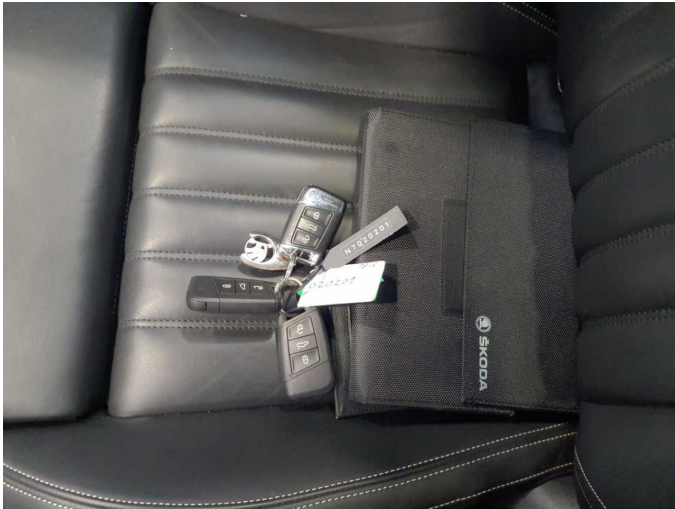


Figure 13: Documents



Figure 14: Additional tyres



Figure 15: Additional tyres



Figure 16: Navigation



Figure 17: Misc.



Figure 18: Misc.



Figure 19: Misc.



Figure 20: Misc.



Figure 21: Misc.

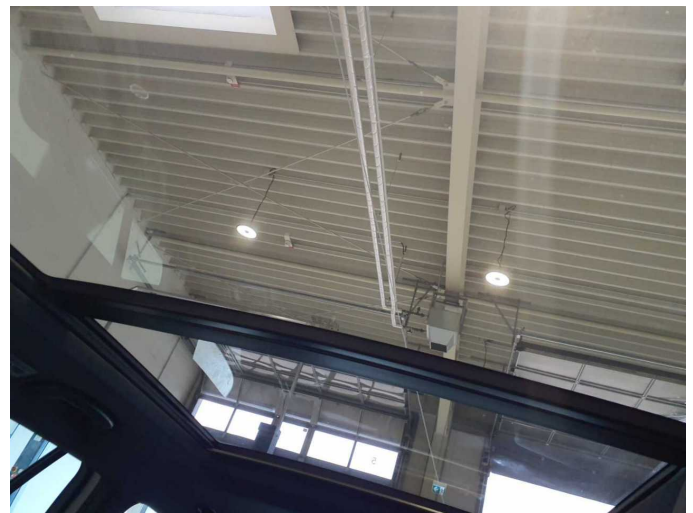


Figure 22: Misc.

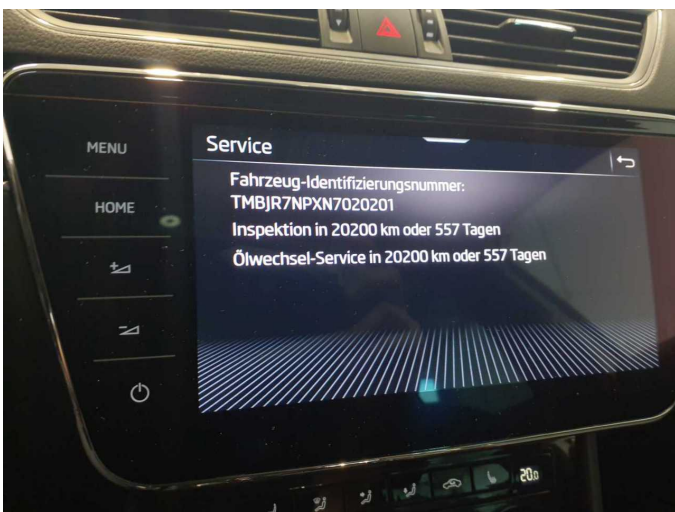


Figure 23: Misc.

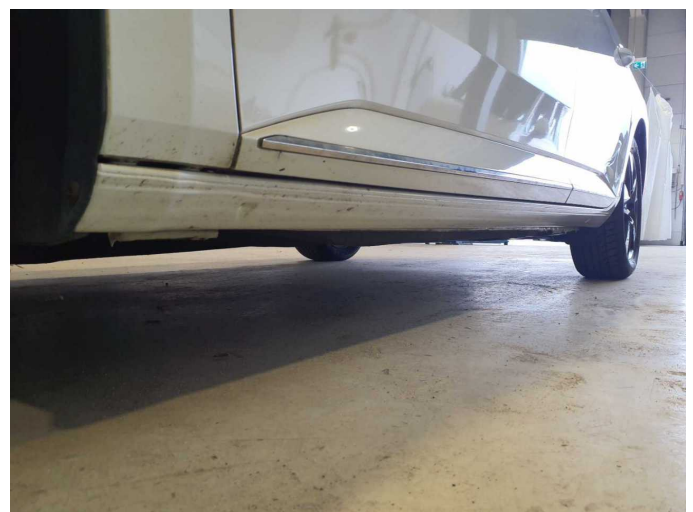


Figure 24: Misc.



Figure 25: Misc.



Figure 26: Misc.

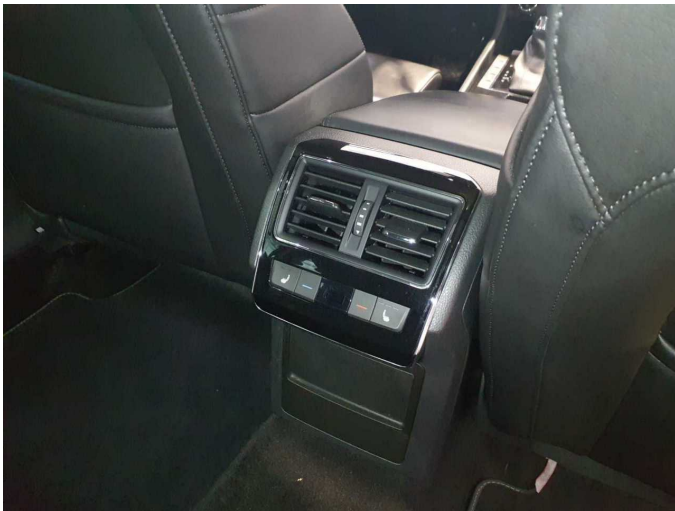


Figure 27: Misc.



Figure 28: Misc.



Figure 29: Misc.



Figure 30: Misc.



Figure 31: Misc.



Damage 2: Equipment: Tirefit filler - Expired - Replace



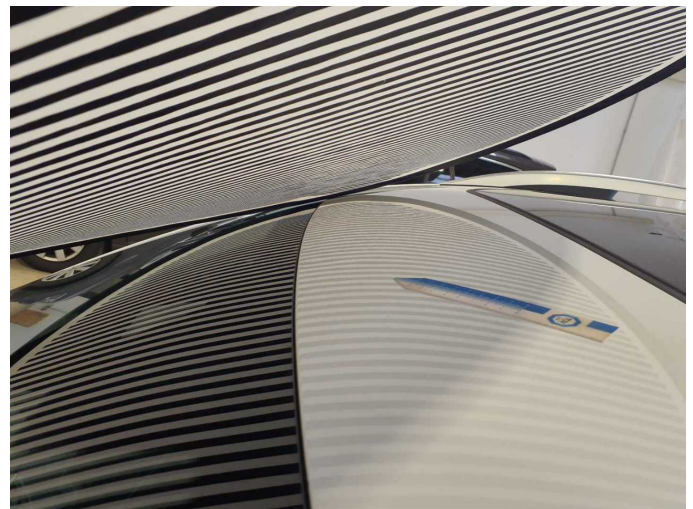
Damage 3: Door - rear left side: Door edge - Scratch(es) - Smart repair



Damage 3: Door - rear left side: Door edge - Scratch(es) - Smart repair



Damage 4: Roof: Roof - dent(s) - Smooth repair work



Damage 4: Roof: Roof - dent(s) - Smooth repair work



Damage 5: 2nd wheel set: 1 alloy rim - Scratch(es) - Loss in value



Damage 5: 2nd wheel set: 1 alloy rim - Scratch(es) - Loss in value



Damage 6: 2nd wheel set: 1 alloy rim - Scratch(es) - Loss in value



Damage 6: 2nd wheel set: 1 alloy rim - Scratch(es) - Loss in value



Damage 7: Wheel / tyres: Tyre - front - Worn - Replace



Damage 7: Wheel / tyres: Tyre - front - Worn - Replace



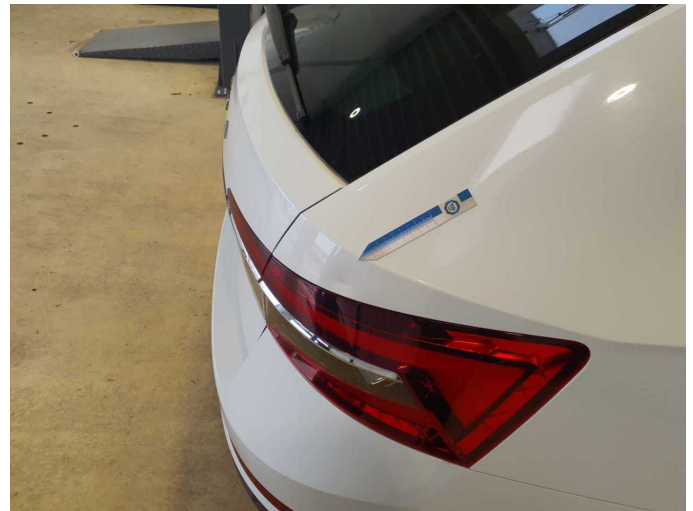
Damage 8: Front bumper: Front bumper - Scratch(es) - Paint



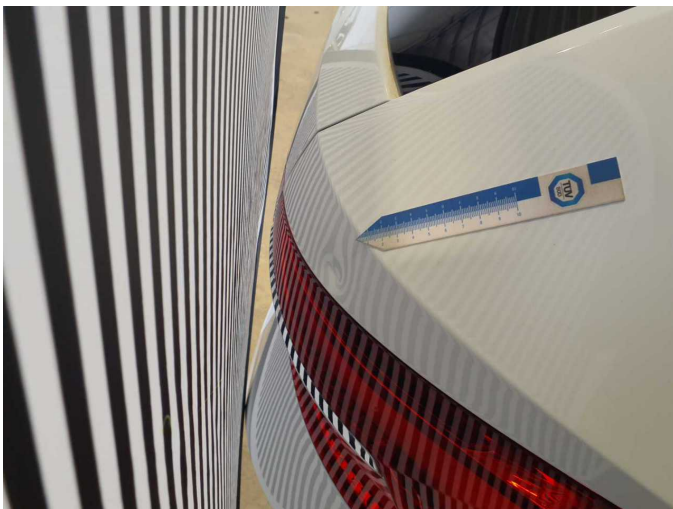
Damage 8: Front bumper: Front bumper - Scratch(es) - Paint



Damage 8: Front bumper: Front bumper - Scratch(es) - Paint



Damage 9: Side panel - rear right side: Side panel - Dent / paintcoat damage - Repair and paint



Damage 9: Side panel - rear right side: Side panel - Dent / paintcoat damage - Repair and paint



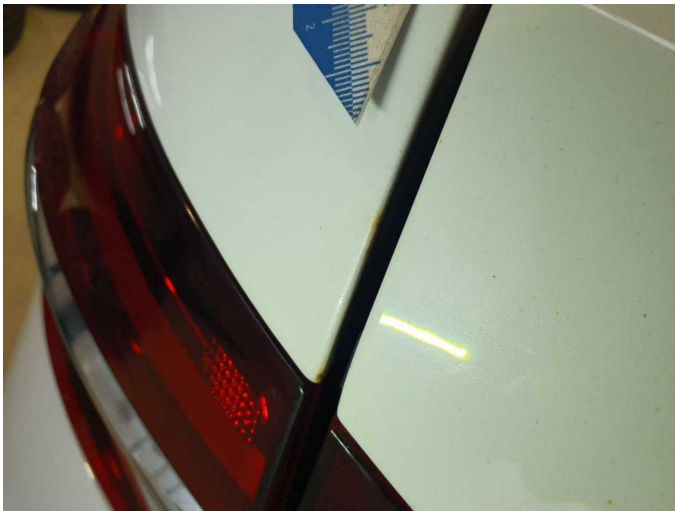
Damage 9: Side panel - rear right side: Side panel - Dent / paintcoat damage - Repair and paint



Damage 9: Side panel - rear right side: Side panel - Dent / paintcoat damage - Repair and paint



Damage 10: Side panel - rear left side: Side panel - Corrosion - Repair and paint



Damage 10: Side panel - rear left side: Side panel - Corrosion - Repair and paint



Damage 11: Vehicle glazing: Windscreen - Stone chips - Replace



Damage 11: Vehicle glazing: Windscreen - Stone chips - Replace



Wear and tear 4: Trim / covers: Boot lining - Abrasion - No deduction



Wear and tear 4: Trim / covers: Boot lining - Abrasion - No deduction



Repainting 1: Roof rail - left side



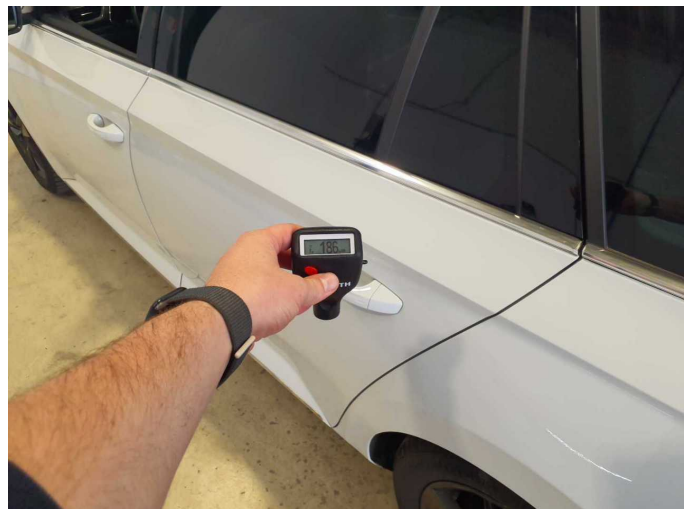
Repainting 1: Roof rail - left side



Repainting 2: Side panel - rear left side



Repainting 2: Side panel - rear left side



Repainting 3: Door - rear left side



Repainting 3: Door - rear left side



Wartungshistorie

(gemäß Auftraggeber Informationen)

Fahrgestellnummer: TMBJR7NPXN7020201

Hersteller / Modell: SKODA SKODA Superb Combi 2.0 TDI DSG L&K

Datum	KM-Stand	Beschreibung
12.11.2025	152.062	Bremse Sonstiges; Bremsklötze hinten; Bremsklötze vorne; Bremsscheiben + Klötze h; Bremsscheiben + Klötze v; Bremsscheiben hinten; Bremsscheiben vorne; Motoröl b. Wartung; Ölfilter ern; Regelwartungsdienst; Wartung Sonstiges
10.10.2025	149.896	Batterie ern
19.02.2025	127.345	HU + AU
13.02.2025	122.977	Getriebeöl ern/prüfen; Motoröl b. Wartung; Ölfilter ern; Regelwartungsdienst; Wartung Sonstiges
08.05.2024	91.504	Bremse Sonstiges; Bremsflüssigkeit; Bremsflüssigkeit ern; Bremsklötze hinten; Bremsscheiben + Klötze v; Bremsscheiben hinten; Bremsscheiben vorne; Kraftstofffilter ern; Luftfiltereinsatz ern; Motoröl b. Wartung; Ölfilter ern; Regelwartungsdienst; Systemtest/Eigendiagnose; Wartung Sonstiges
27.11.2023	61.612	Motoröl b. Wartung; Ölfilter ern; Regelwartungsdienst; Wartung Sonstiges
02.12.2022	31.808	Motoröl b. Wartung; Ölfilter ern; Regelwartungsdienst; Wartung Sonstiges