

Expertise

Protocol number: 46154431
Order No. / Reference: 26590875
Inspection date: 25 Jun 2026

Manufacturer: Ford

Model: Kuga 2.5 Duratec PHEV COOL&CONNECT

VIN: WF0FXXWPMHPD64186



Vehicle details

Manufacturer / Type / Model / Equipment

Ford Kuga 2.5 Duratec PHEV COOL&CONNECT

Vehicle Identification number	WF0FXXWPMHPD64186
Mileage (Read)	39,779 km
First registration	17 May 2023
Number of holders	1
Next periodical technical inspection	06/2028 (Report on hand)

Power / Engine displacement	112 kw / 2,488 ccm
Fuel type / Cylinder	Hybr.B/E ext.auf1 / 4
Gearbox / Number of gears	Direct drive / 1
Type of drive	Front drive
Type of vehicle	SUV

Colour / colour code	Frozen White
Doors / Seats	5 / 5
Upholstery type	Cloth
Colour of upholstery	Anthracite-Black

Vehicle with smoke odor	no
--------------------------------	----



Vehicle details

Maintenance booklet / proof	Available / incomplete	Next maintenance in	92 %
Key is / should be	2 / 2	FZG documents	ZB#2 (B) was available (copy), ZB#1 (S) was not available.
		Letter No.	GT886444
Previous damage / Accident	None detectable	Repainting	None detectable
Inspection conditions	sufficient	Lifting equipment / pit	yes
Test drive	Not performed	Engine function test	Performed
Manufacturer key number/ type code number	8566 / BTM 00020		
Emission standard	EURO6;WLTP;AP;PI/CI; M, N1 I	fine dust sticker	
Permitted total weight	2,320 kg	Empty weight	

Tyres

Mounted tyres

#	Tyre size	Type of tyre	Manufacturer	Tread depth
1)	225/65 R17 106V	Winter tyres on Light alloy	Michelin	5mm / 5mm
2)	225/65 R17 106V	Winter tyres on Light alloy	Michelin	5mm / 5mm

Replacement

Typ	Tyre size	Type of tyre	Manufacturer	Tread depth
	Tirefit	Expiration date 03/2027		

Legend: Tread depth information for the left tire is listed first, for the right tire it is listed second on the axle in the direction of travel.



Equipment

Standard equipment

- Acoustic Vehicle Alerting System (AVAS)
- Electrically adjustable and heated exterior mirrors (painted in car color - with integrated turn signals)
- Tires: Tire repair kit (maximum speed 80 km/h when used)
- third brake light
- Roof spoiler (painted in car color)
- Tachometer
- Selective driving mode switch (5 driving modes to choose from: Normal, Sport, Eco, Slippery and Unpaved Roads)
- Electric front and rear windows with all-around closing function
- Ford EcoCoach (shows the efficiency of current driving behavior)
- FordPower start function (keyless start)
- FordPass Connect including eCall, Live Traffic information (information about the current status or location of the vehicle, as well as control of selected vehicle functions via a compatible smartphone with the FordPass app - Real-time traffic information)
- Cruise control
- Illuminated glove compartment
- Heated rear window
- Intelligent Protection System (IPS) (front airbag for driver and front passenger - front and rear head and shoulder airbags - side airbag for driver and front passenger - seat belt tensioners and force limiters in the front and on the outer seats of the 2nd row - 3-point seat belts on all seats, height-adjustable in the front - warning system for unfastened seat belts in the front and in the 2nd row)
- Charging cable for household socket
- Steering wheel: Steering wheel, 3-spoke design, Sensico in leather look
- Front center console with integrated armrest (2 front cup holders)
- Fog light
- Emergency brake light, pulsating illumination of the brake lights during hard braking
- Front and rear parking pilot system
- Upholstery: Cloth
- Post-Collision Assist
- Pre-Collision Assist (including Forward Alert system with pedestrian and bicycle detection)
- Tire Pressure Monitoring System (TPMS)
- Headlight assistant with day/night sensor
- Seats: Passenger seat, 4-way manually adjustable
- Seats: Driver's seat, 8-way manually adjustable, including adjustable lumbar support
- Seats: Rear bench seat, sliding, with split-folding backrest
- Seats: Front seats, individually and variably heated
- Carpet floor mats in the front
- Variable radiator air intake
- Central locking with remote control and remote luggage compartment release
- Anti-lock braking system
- Passenger airbag deactivation
- Tires: 7 J x 17 alloy wheels (4) in 5-spoke design (with 225/65 R 17 tires)
- Fabric headliner
- 12.3-inch digital instrument panel
- Electronic Stability Program (ESP) (additionally with electronic brake booster)
- Lane keeping assist including lane keeping assist
- Electric parking brake with auto hold function
- Ford Easy Fuel (Ford Easy Fuel comfort refueling system (Eliminates the need for a separate internal fuel cap and prevents misfueling by detecting the size difference between petrol and diesel nozzles. The filler neck only opens when the correct fuel is used.)
- Geofencing - Display of emission zones with Euro 6 and higher in the SYNC navigation device
- Luggage compartment cover, roller blind, removable
- Luggage compartment lighting
- Transmission: continuously variable automatic transmission (CVT)
- rear window wiper
- ISOFIX mounts including top tether attachment points on the outer seats of the 2nd row.
- Air conditioning with automatic temperature control (separately adjustable for driver and passenger side (2-zone automatic climate control))
- Front and rear headrests (5) height adjustable
- Paint finish: Solid
- LED taillights
- Steering column, adjustable in height and reach
- Make-up mirrors in driver and passenger sun visors
- MyKey key system (individually programmable second key)
- Navigation system: Ford navigation system including Ford SYNC 3 (AppLink, Android Auto, Apple CarPlay - 8" touchscreen (20.3 cm screen diagonal) - DAB/DAB+ radio reception (Digital Audio Broadcasting) - 6 speakers - Steering wheel controls - Bluetooth hands-free system and audio streaming - USB port - Voice control for audio and telephone - Acoustic and visual route guidance - Dynamic navigation with enhanced traffic information system - Lane guidance - Road map for Europe)
- Projection lens headlights with LED daytime running lights
- Power steering (electro-mechanical, speed-dependent (EPAS - Electric Power Assisted Steering))
- Seats: Backrest for front passenger, adjustable tilt
- Seats: Driver's backrest, adjustable tilt
- Seats: Front sports seats with integrated headrests
- Power outlet: 12-volt connection in the luggage compartment
- Immobiliser



Extra equipment

- Safety partition net for attachment behind the 2nd row of seats
(including attachment points behind the first and second rows of seats)
- Paint finish: Solid color, special color
- Tires: 4 all-season tires 225/65 R 17 102V

Brief expert findings

Documents submitted	At the time of the inspection, the vehicle registration certificate Part 2 (title) was available, but the vehicle registration certificate Part 1 (document) was not. (Copy)
VIN comparison	The vehicle identification number (VIN) was read from the vehicle and its conformity with the submitted documents was confirmed by the undersigned during the inspection.
Inspection	The inspection conditions were sufficient for the assessment of the vehicle. Lifting equipment and/or a pit were available for examining the vehicle.
Test drive	No test drive/shunting maneuver was carried out during the inspection of the vehicle.
Engine function test	An engine test run was performed.

Value reducing factors

No.	Component group	Description
1	Trim / covers	Boot lining - Scratch(es) - Loss in value
2	Trim / covers	Boot lining - Scratch(es) - Loss in value
3	Vehicle glazing	Windscreen - Stone chips - Replace
4	Front bumper	Front bumper - Stone chips - Paint

Order/Scope of Order

An order was placed to prepare a sales report for the described vehicle. This report includes the following:

- Description of key vehicle information
- Documentation of equipment features
(*Delivery by third-party service providers*)
- Documentation of damage, defects, missing parts
- Documentation of prior damage, unrepaired prior damage, repainting
- A brief visual or functional inspection of the equipment details, if possible.
(*Functional testing of driver assistance systems is not included in the scope of services!*)
- a photographic documentation of the vehicle



Basis for the order

This product is based on the guidelines for vehicle returns and valuations published by Alphabet Fleet GmbH. The expert makes the specific findings in each individual case objectively, within the framework of the prescribed standards, based on their own expertise.

The vehicle inspection takes place in a fully assembled, unassembled state.

Damage or defects that can only be detected during disassembly/diagnostic work or through further investigation remain within the realm of prognostic risk. An increased risk exists due to concealed defects caused by fraudulent misrepresentation and which were not identifiable by the expert.

Damage or defects resulting from normal use or wear and tear of the vehicle will be accepted in accordance with the applicable standard.

There was no explicit identification or monetary consideration of the expected features within the product.

Features which, in their nature and extent, slightly exceed normal use but do not constitute unacceptable damage, will be documented and indicated as signs of wear, if applicable.

Damage or defects that, according to the applicable standard, can no longer be attributed to normal use or wear and tear are listed under "Value Reducing Factors" in the product description.

Depending on the product specification, a monetary ID can be provided. If this takes place, the costs can be 100% d or pro rata depending on the vehicle's age and mileage.

Previous damages

No apparent prior damage that had been repaired could be found on the vehicle.



Figure 1: Diagonal front (left)



Figure 2: Diagonal front (right)



Figure 3: Diagonal rear (left)



Figure 4: Diagonal rear (right)

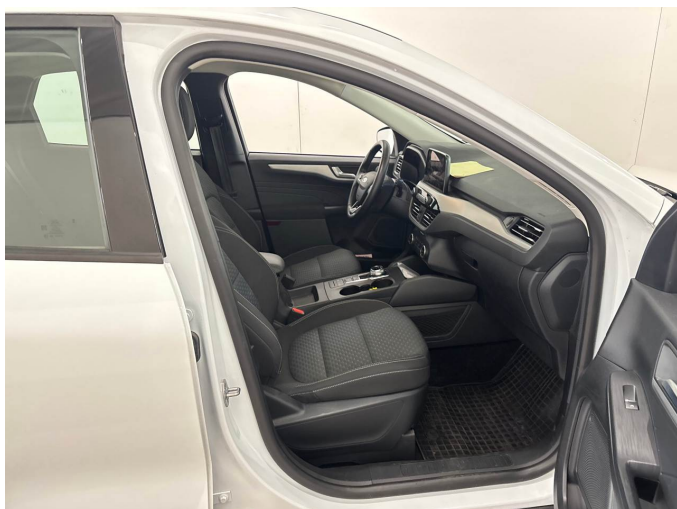


Figure 5: Interior - front



Figure 6: Interior - rear



Figure 7: Instrument cluster



Figure 8: Instrument panel



Figure 9: Interior 360° view



Figure 10: VIN



Figure 11: Mounted tyres

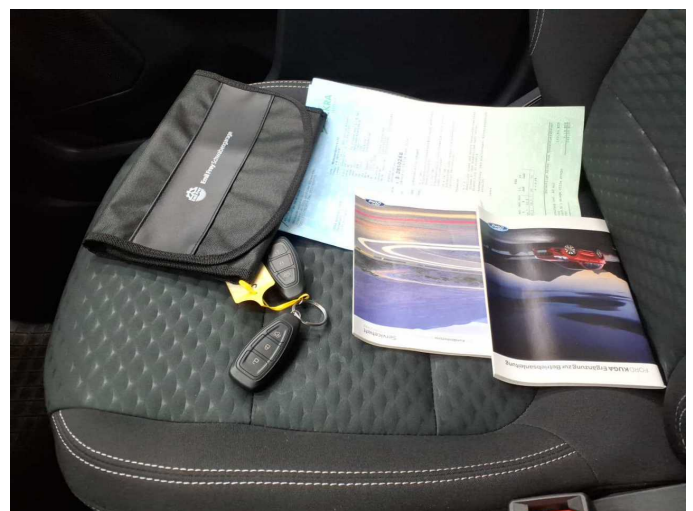


Figure 12: Documents



Figure 13: Documents



Figure 14: Documents



Figure 15: Navigation



Figure 16: Misc.

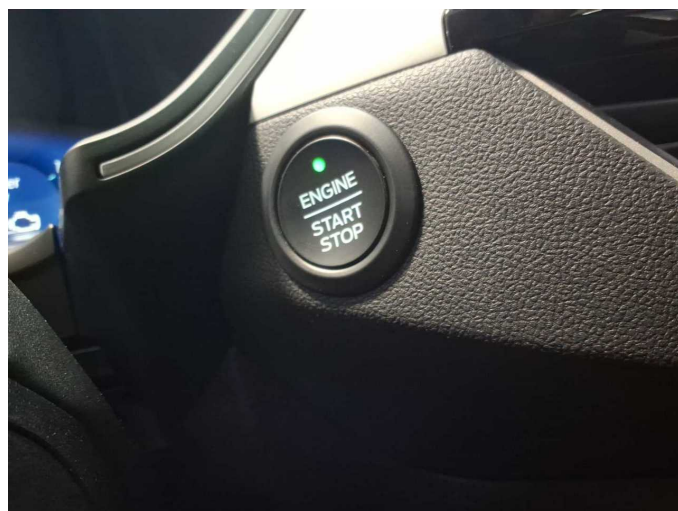


Figure 17: Misc.



Figure 18: Misc.



Figure 19: Misc.



Figure 20: Misc.



Figure 21: Misc.



Figure 22: Misc.



Figure 23: Misc.



Figure 24: Misc.



Figure 25: Misc.



Figure 26: Misc.



Figure 27: Misc.



Damage 1: Trim / covers: Boot lining - Scratch(es) - Loss in value



Damage 1: Trim / covers: Boot lining - Scratch(es) - Loss in value



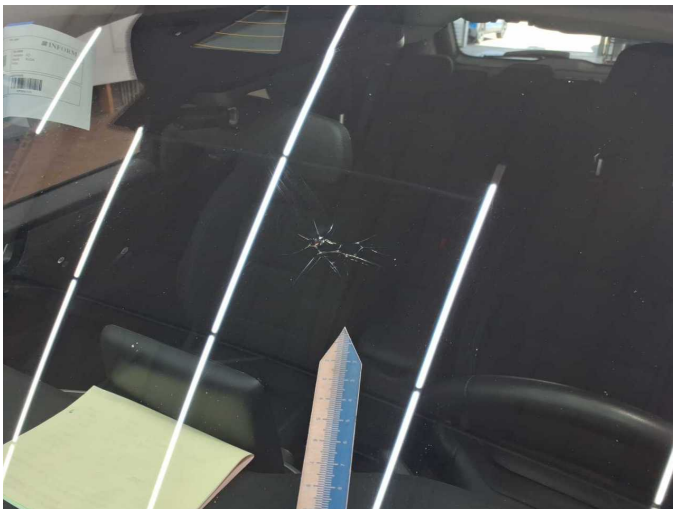
Damage 2: Trim / covers: Boot lining - Scratch(es) - Loss in value



Damage 2: Trim / covers: Boot lining - Scratch(es) - Loss in value



Damage 3: Vehicle glazing: Windscreen - Stone chips - Replace



Damage 3: Vehicle glazing: Windscreen - Stone chips - Replace



Damage 4: Front bumper: Front bumper - Stone chips - Paint



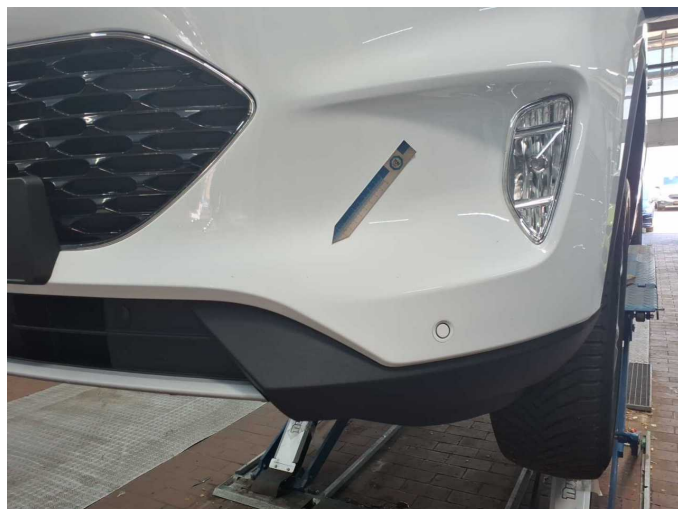
Damage 4: Front bumper: Front bumper - Stone chips - Paint



Damage 4: Front bumper: Front bumper - Stone chips - Paint



Damage 4: Front bumper: Front bumper - Stone chips - Paint



Damage 4: Front bumper: Front bumper - Stone chips - Paint



Damage 4: Front bumper: Front bumper - Stone chips - Paint