

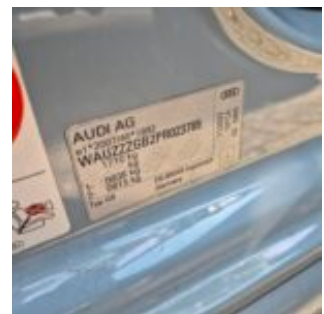
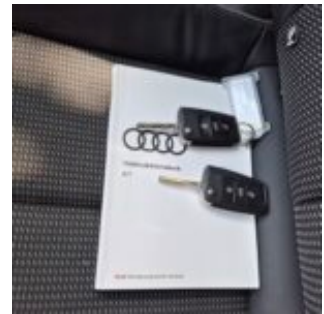
2-DFL-395

2-DFL-395 · 35 TFSI 150 hk S tronic S line · 15 June 2026 · Zaventem (BE)

Specifications

License Plate Number	2-DFL-395	Fuel Type	Gasoline
Manufacturer	AUDI	VIN	WAUZZZGB2PR023789
Model	A1 Sportback	Cylinder Capacity	1.498 ^{cm³}
Model Versions	35 TFSI 150 hk S tronic S line	Transmission Type	Automatisch geschakelde Transmissie
Body Type	5 door hatchback	First Admission	02-03-2023
Color	Grey	Odometer	81.646 ^{Km}
Paint Type	Metallic	Numer Of Keys	2
Production Year	2023	Interior	Black
KW	110	Number Headrests	5

Images





Accessories

ABS

Airbags

Alloy wheels

Audio System

Automatic air conditioning

Bluetooth car kit

Central door locking

Centre armrest

Cruise control

Electric rear windows

Electric windows front

Electrically adjustable exterior mirrors

Front & rear parking sensors

Leather steering wheel

Rear view camera

Roller cover / parcel shelf

Seat heating

Steering wheel multifunction

Condition

Condition exterior Adequate

Condition interior Adequate

Last Maintenance Unknown

Previous Repairs Unknown

Tire Specifications

Tire	Profile	Brand	Width	Aspect Ratio	Radial	Type
Front Left	3 ^{mm}	Michelin	215 ^{mm}	40 ^{mm}	18 ^{inch}	Summer
Rear Left	5 ^{mm}	Michelin	215 ^{mm}	40 ^{mm}	18 ^{inch}	Summer
Front Right	3 ^{mm}	Michelin	215 ^{mm}	40 ^{mm}	18 ^{inch}	Summer
Rear Right	5 ^{mm}	Michelin	215 ^{mm}	40 ^{mm}	18 ^{inch}	Summer
Spare Tire Type	Compressor					

Damages



Damage Part

Fender - Rear Left

Damage Type

Small dent(s)

Repair Type

Restyle

Acceptable

No



Damage Part

Alloy - Right Rear

Damage Type

Damaged

Repair Type

Rim repair

Acceptable

No



Damage Part

Alloy - Left Front

Damage Type

Damaged

Repair Type

Rim repair

Acceptable

No



Damage Part

Hood

Damage Type

Stonechipping

Repair Type

Acceptable

Acceptable

Yes



Damage Part

Bumper - Front

Damage Type

Damaged

Repair Type

Touch-up / Polish

Acceptable

No



Damage Part

Alloy - Right Front

Damage Type

Damaged

Repair Type

Rim repair

Acceptable

No



Damage Part

Damage Type

Repair Type

Acceptable

Alloy - Right Rear

Damaged

Rim repair

No



Damage Part

Damage Type

Repair Type

Acceptable

Reardoor - Right

small dents / small scratches

Panelbeating & Spray

No



Damage Part

Damage Type

Repair Type

Acceptable

Fender - Rear Right

Small dent(s)

Panelbeating & Spray

No



Damage Part
Bumper - Rear

Damage Type
Scratch(es)

Repair Type
Spray

Acceptable
No



Damage Part
Tailgate

Damage Type
Small dent(s)

Repair Type
Restyle

Acceptable
No