

## Expertise

Protocol number: 46340716  
Order No. / Reference: 26663994  
Inspection date: 2 Jul 2026

Manufacturer: Skoda

Model: Octavia Combi 2.0 TDI DSG Sportline

VIN: TMBJJ8NX2PY060010



### Vehicle details

#### Manufacturer / Type / Model / Equipment

Skoda Octavia Combi 2.0 TDI DSG Sportline

**Vehicle Identification number** TMBJJ8NX2PY060010

**Mileage (Read)** 176,331 km

**First registration** 16 Mar 2023

**Number of holders** 1

**Power / Engine displacement** 110 kw / 1,968 ccm

**Fuel type / Cylinder** Diesel / 4

**Gearbox / Number of gears** Automatic / 7

**Type of drive** Front drive

**Type of vehicle** Station wagon

**Colour / colour code** Black Magic Pearlescent (F9R)

**Doors / Seats** 5 / 5

**Upholstery type** Cloth

**Colour of upholstery** Black



## Vehicle details

<b>Maintenance booklet / proof</b>	digital proof / complete	<b>Next maintenance in</b>	4,400 km
<b>Last service on / at</b>	05/2026 at 176,266 km		
<b>Key is / should be</b>	2 / 2	<b>FZG documents</b>	ZB#2 (B) was available (copy), ZB#1 (S) was not available.
		<b>Letter No.</b>	GQ556571
<b>Previous damage / Accident</b>	Detectable	<b>Repainting</b>	Detectable
<b>Inspection conditions</b>	sufficient	<b>Lifting equipment / pit</b>	No
<b>Test drive</b>	Not performed	<b>Engine function test</b>	Performed
<b>Manufacturer key number/ type code number</b>	8004 / AWL 00353		
<b>Emission standard</b>	EURO6;WLTP;AP;PI/CI; M, N1 I	<b>fine dust sticker</b>	
<b>Permitted total weight</b>	1,990 kg	<b>Empty weight</b>	

## Tyres

### Mounted tyres

#	Tyre size	Type of tyre	Manufacturer	Tread depth
1)	225/45 R18 95Y	Summer tyres on Light alloy	Continental	5mm / 5mm
2)	225/45 R18 91Y	Summer tyres on Light alloy	Bridgestone	2mm / 2mm

### Additional tyres

#	Tyre size	Type of tyre	Manufacturer	Tread depth
1)	205/60 R16 96H	Winter tyres on Light alloy	Continental	5mm / 5mm
2)	205/60 R16 96H	Winter tyres on Light alloy	Continental	6mm / 6mm

### Replacement

Typ	Tyre size	Type of tyre	Manufacturer	Tread depth
E	205/60 R16 92V	Summer tyres on Steel	Kumho	6 mm

**Legend: Tread depth information for the left tire is listed first, for the right tire it is listed second on the axle in the direction of travel.**

TÜV SÜD Auto Partner GmbH  
Wiesenring 2  
04159 Leipzig

Inspection location  
Hartmann Fleet Professionals GmbH  
Leerenstraße 25  
29683 Bad Fallingbommel



## Equipment



## Standard equipment

- Storage compartment in the luggage compartment with cargo element
- Airbag for driver and front passenger (passenger airbag can be deactivated)
- Airbag, driver's knee airbag
- Airbag, front side airbags
- Ambient lighting (dashboard, front trim strips and footwell with selectable color climate) in the interior as well as logo projector on the outside)
- Automatically dimming exterior mirror (driver's side)
- Electrically folding exterior mirrors
- Hill start assist
- Hydraulic brake assist (HBA)
- black headliner
- Decorative trim in piano black
- Digital Cockpit Plus
- Third brake light
- Electronic transverse differential lock (XDS+)
- Driving profile selection
- Front radar assistant including city emergency braking function and pedestrian and cyclist detection
- Transmission: 7-speed dual-clutch transmission (DSG)
- Green tec: Start/stop system including brake energy recuperation
- Interior mirror automatically dimming
- Kessy, keyless entry and start-stop system
- Child safety lock for the rear doors and windows
- Removable boot cover
- Paint finish: Solid
- LED fog lights
- LED license plate lights
- LED headlights with LED daytime running lights
- Steering wheel: height and reach adjustable
- Manual headlight range adjustment
- Rear center armrest with pass-through option
- Front center armrest, including storage compartment
- Engine drag torque control (MSR)
- Front and rear parking sensors
- Upholstery: Fabric and Thermoflux with Sport interior
- Radio: Bolero music system with 10" display
- Radio accessories: 2 x USB charging ports (Type-C) in the rear and USB charging port (Type-C) in the rearview mirror
- Radio accessories: Digital radio reception DAB+
- Radio accessories: Voice control
- Rain sensor and driving light assistant ((Easy Light Assist) (Tunnel light, Coming Home, Leaving Home))
- Wheels: 18" Vega AERO alloy wheels, black gloss turned (7.5J x 18, ET 48 with 225/45 R18 tires)
- Seats: Heated front seats
- Seats: Height-adjustable driver and passenger seats (including lumbar support)
- Storage compartments (storage compartments in the front door panels with 1.5l bottle holders, storage compartments in the rear door panels with 0.5l bottle holders, storage compartments in the doors with felt lining)
- Airbag, head airbags
- Airbag: Center airbag front
- Trailer hitch preparation including trailer stabilization
- Anti-lock braking system (ABS)
- Traction control (ASR)
- Electrically adjustable and heated exterior mirrors
- Heated windshield washer nozzles including 5l washer fluid reservoir
- Glasses compartment in the headliner
- AERO roof rails in black
- Diesel particulate filter
- Tachometer
- Electronic parking brake including auto-hold function
- Electronic Stability Control (ESC)
- Electric windows front and rear, including anti-pinch protection and child safety lock
- Cruise control system
- Tinted windows
- Heated rear window
- Rear window wiper including windshield washer system
- ISOFIX preparations on the front passenger seat and the outer rear seats including top tether anchorage
- Climatronic air conditioning (2-zone) (fully automatic, separately adjustable for driver and front passenger, and with anti-allergen filter & activated carbon filter)
- LED taillights in crystal glass look and animated turn signals
- Remote release of the rear seat backrests in the trunk
- Steering wheel: Leather steering wheel in sport design with multifunction buttons including shift paddles (with decorative stitching in red or grey - infotainment and driver assistance system operation)
- Fatigue detection
- Pedals in stainless steel look
- Progressive steering
- Radio accessories: 2 USB-C ports on the front
- Radio accessories: 8 speakers
- Radio accessories: Bluetooth hands-free system
- Radio accessories: SmartLink (Apple CarPlay - Android Auto)
- Tire pressure monitoring
- Tire mobility kit (tire repair spray incl. compressor)
- Electromechanical power steering
- Seat belts (Three three-point seat belts in the rear)
- Seats: Electrically adjustable front seats with memory function
- Seats: Rear seat backrest split 60:40, foldable



- Seats: Sports seats with integrated headrests in the front and height-adjustable headrests in the rear.
- Speed limiter
- Lane keeping assistant (Lane Assist)
- 12V socket in the trunk
- Sunset (rear window and rear side windows tinted dark)
- Telephone: Phonebox with inductive charging function (connection via external antenna)
- Phone: Wireless SmartLink for Apple CarPlay
- Textile floor mats
- Front door sill trims
- Immobiliser

- SKODA Care Connect (SOS emergency call function (eCall+ including automatic activation in the event of an accident with airbag deployment) - Mobility service (connection option for rapid assistance in case of breakdown) - Information service (connection option to the hotline for all questions relating to vehicle functions) - Free remote vehicle access for 1 year (Remote Access) with access to vehicle data and functions via smartphone, e.g. parking position, activating hazard warning lights, current fuel level)
- Lashing eyes in the trunk
- Central locking including remote control integrated into the key and EASY Start

**Extra equipment**

- Paint finish: Pearl effect
- Package: Comfort (RS, Sportline) (3-zone Climatronic - Acoustic glazing in the front side windows - Heated front and outer rear seats - Heated steering wheel)
- Package: Lights (cornering lights in the fog lights - headlight cleaning system - high beam assist - LED ambient lighting)
- Wheels: Steel spare wheel 16"

- Package: Infotainment package Business Columbus (Sportline) DSG (Columbus navigation system - Infotainment Online (3-year term), online map updates: for navigation, traffic situation, petrol stations and parking space search - Head-Up Display - Adaptive Cruise Control (ACC) - Traveller Assist system: - Traffic sign recognition - Adaptive Lane Keeping Assist - Emergency and traffic jam assist - Capacitate steering wheel with Hands Off Detection)

**Brief expert findings**

Documents submitted	At the time of the inspection, the vehicle registration certificate Part 2 (title) was available, but the vehicle registration certificate Part 1 (document) was not. (Copy)
VIN comparison	The vehicle identification number (VIN) was read from the vehicle and its conformity with the submitted documents was confirmed by the undersigned during the inspection.
Inspection	The inspection conditions were sufficient for the assessment of the vehicle. No lifting equipment or pit was available for inspecting the vehicle. Therefore, inspection of the vehicle's underside was only possible to a limited extent.
Test drive	No test drive/shunting maneuver was carried out during the inspection of the vehicle.
Engine function test	An engine test run was performed.

**Value reducing factors**

No.	Component group	Description
1	Side panel - rear left side	Sill - Dent / paintcoat damage - Smart repair
2	Door - rear right side	Door - Dent / paintcoat damage - Smart repair
3	Front bumper	Front bumper - Scratch(es) - Smart repair
4	Trim / covers	Boot lid - interior trim - Scratch(es) - Replace
5	Side panel - rear right side	Side panel - Dent / paintcoat damage - Smart repair
6	Door - front right side	Door - Dent / paintcoat damage - Repair and paint
7	Bonnet	Bonnet (Lack löst sich) - Unprofessionally repaired - Repair and paint
8	Boot lid / rear door	Boot lid - Corrosion - Repair and paint
9	Vehicle glazing	Windscreen - Broken / torn - repair according to calculation
10	Roof	Roof - Corrosion - Repair and paint



## Wear and tear

No.	Component group	Description
1	Wheel / tyres	Tyre - right (Über 2mm) - No deduction
2	Rear bumper	Rear bumper - Scratch(es) - No deduction

The vehicle shows signs of wear and tear commensurate with its age and use.

## Previous damages

No.	Previous damage	Extent of damage (Net)
1	Front, Provided by user / customer, from 27 May 2025	707,47 €
2	Front, Side right, Provided by user / customer, from 18 Nov 2024	4.279,79 €

## Accident damages

No.	Accident
1	Side - left

## Repainting

No.	Repainting
1	Bonnet, Unprofessionally carried out, Invoice of repair done Non-existent

## Paint coat thickness measurement

Bonnet	450 µm
--------	--------

## Order/Scope of Order

An order was placed to prepare a sales report for the described vehicle. This report includes the following:

- Description of key vehicle information
- Documentation of equipment features  
(*Delivery by third-party service providers*)
- Documentation of damage, defects, missing parts
- Documentation of prior damage, unrepaired prior damage, repainting
- A brief visual or functional inspection of the equipment details, if possible.  
(*Functional testing of driver assistance systems is not included in the scope of services!*)
- a photographic documentation of the vehicle



## Basis for the order

This product is based on the guidelines for vehicle returns and valuations published by Alphabet Fleet GmbH. The expert makes the specific findings in each individual case objectively, within the framework of the prescribed standards, based on their own expertise.

The vehicle inspection takes place in a fully assembled, unassembled state.

Damage or defects that can only be detected during disassembly/diagnostic work or through further investigation remain within the realm of prognostic risk. An increased risk exists due to concealed defects caused by fraudulent misrepresentation and which were not identifiable by the expert.

Damage or defects resulting from normal use or wear and tear of the vehicle will be accepted in accordance with the applicable standard.

There was no explicit identification or monetary consideration of the expected features within the product.

Features which, in their nature and extent, slightly exceed normal use but do not constitute unacceptable damage, will be documented and indicated as signs of wear, if applicable.

Damage or defects that, according to the applicable standard, can no longer be attributed to normal use or wear and tear are listed under "Value Reducing Factors" in the product description.

Depending on the product specification, a monetary ID can be provided. If this takes place, the costs can be 100% or pro rata depending on the vehicle's age and mileage.

## Previous damages

Non-repaired previous damages were found at the vehicle. The necessary repair costs are listed in the expert report or if necessary, are listed in detail in a separately enclosed repair cost calculation.

## Comments

Die beigefügte Reparaturkostenkalkulation wurde nach bestem Wissen und Gewissen unter eingeschränkter Besichtigungsbedingung im demontagefreien Zustand erstellt. Es können aufgrund verdeckter Beschädigung erhebliche Mehrkosten und somit Abweichung der für den Unfall ausgewiesenen Reparaturkosten nicht ausgeschlossen werden.



Figure 1: Diagonal front (left)



Figure 2: Diagonal front (right)



Figure 3: Diagonal rear (left)



Figure 4: Diagonal rear (right)



Figure 5: Interior - front



Figure 6: Interior - rear



Figure 7: Instrument cluster



Figure 8: Instrument panel



Figure 9: Interior 360° view



Figure 10: Cargo area

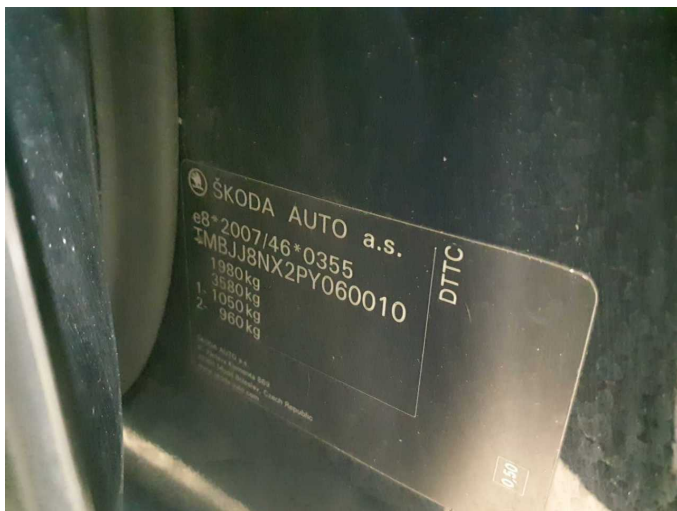


Figure 11: VIN



Figure 12: Mounted tyres



Figure 13: Documents



Figure 14: Additional tyres



Figure 15: Additional tyres



Figure 16: Navigation



Figure 17: Misc.



Figure 18: Misc.



Figure 19: Misc.



Figure 20: Misc.

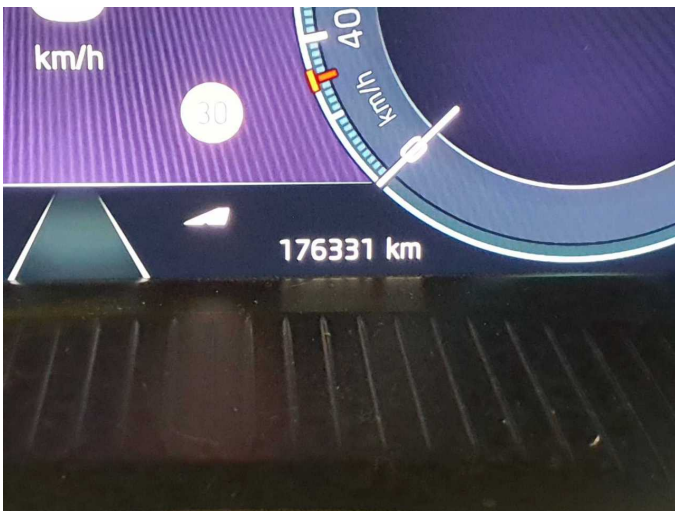


Figure 21: Misc.



Figure 22: Misc.

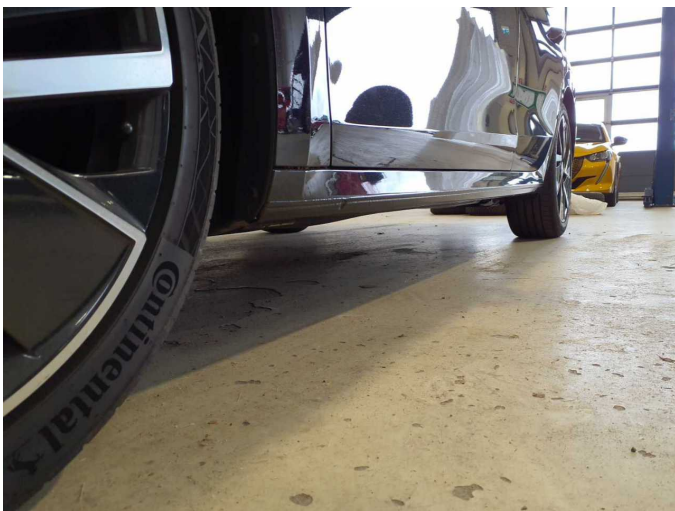


Figure 23: Misc.



Figure 24: Misc.



Figure 25: Misc.



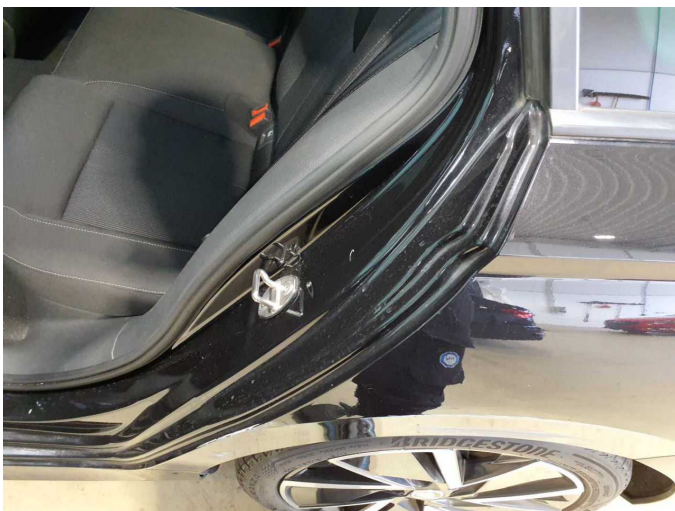
Figure 26: Misc.



Figure 27: Misc.



Figure 28: Misc.



**Damage 1:** Side panel - rear left side: Sill - Dent / paintcoat damage - Smart repair



**Damage 1:** Side panel - rear left side: Sill - Dent / paintcoat damage - Smart repair



**Damage 2:** Door - rear right side: Door - Dent / paintcoat damage - Smart repair



**Damage 2:** Door - rear right side: Door - Dent / paintcoat damage - Smart repair



**Damage 3:** Front bumper: Front bumper - Scratch(es) - Smart repair



**Damage 3:** Front bumper: Front bumper - Scratch(es) - Smart repair



**Damage 3:** Front bumper: Front bumper - Scratch(es) - Smart repair



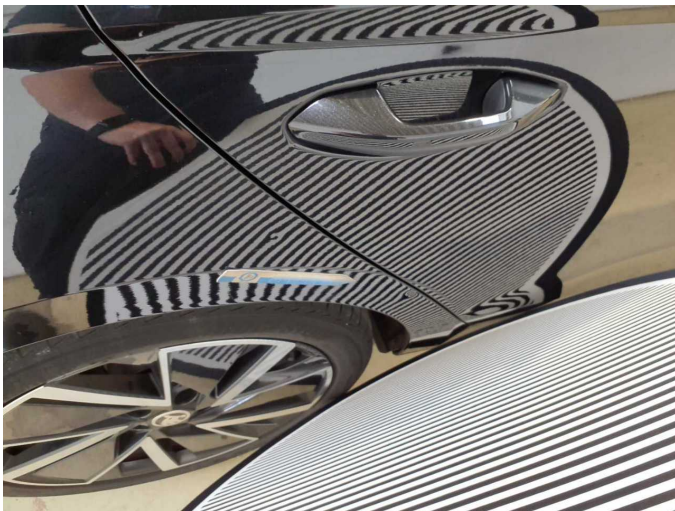
**Damage 4:** Trim / covers: Boot lid - interior trim - Scratch(es) - Replace



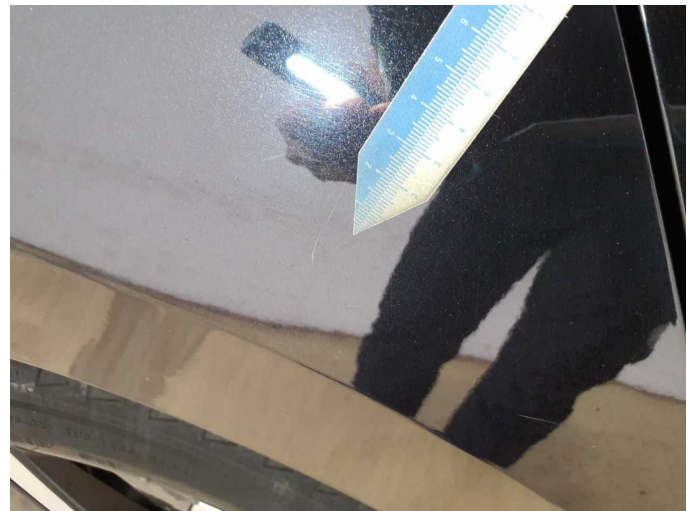
**Damage 4:** Trim / covers: Boot lid - interior trim - Scratch(es) - Replace



**Damage 5:** Side panel - rear right side: Side panel - Dent / paintcoat damage - Smart repair



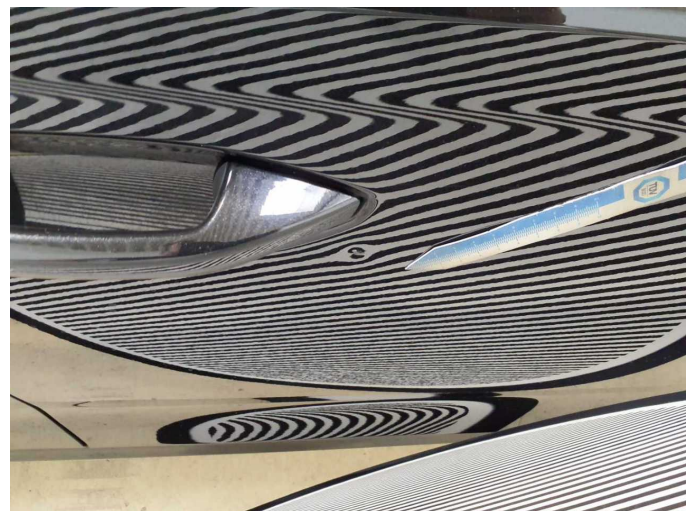
**Damage 5:** Side panel - rear right side: Side panel - Dent / paintcoat damage - Smart repair



**Damage 5:** Side panel - rear right side: Side panel - Dent / paintcoat damage - Smart repair



**Damage 6:** Door - front right side: Door - Dent / paintcoat damage - Repair and paint



**Damage 6:** Door - front right side: Door - Dent / paintcoat damage - Repair and paint



**Damage 6:** Door - front right side: Door - Dent / paintcoat damage - Repair and paint



**Damage 7:** Bonnet: Bonnet (Lack löst sich) - Unprofessionally repaired - Repair and paint



**Damage 7:** Bonnet: Bonnet (Lack löst sich) - Unprofessionally repaired - Repair and paint



**Damage 7:** Bonnet: Bonnet (Lack löst sich) - Unprofessionally repaired - Repair and paint



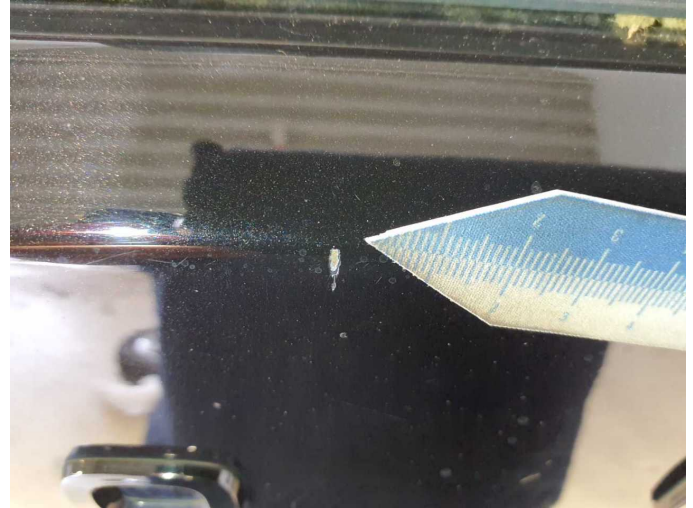
**Damage 7:** Bonnet: Bonnet (Lack löst sich) - Unprofessionally repaired - Repair and paint



**Damage 7:** Bonnet: Bonnet (Lack löst sich) - Unprofessionally repaired - Repair and paint



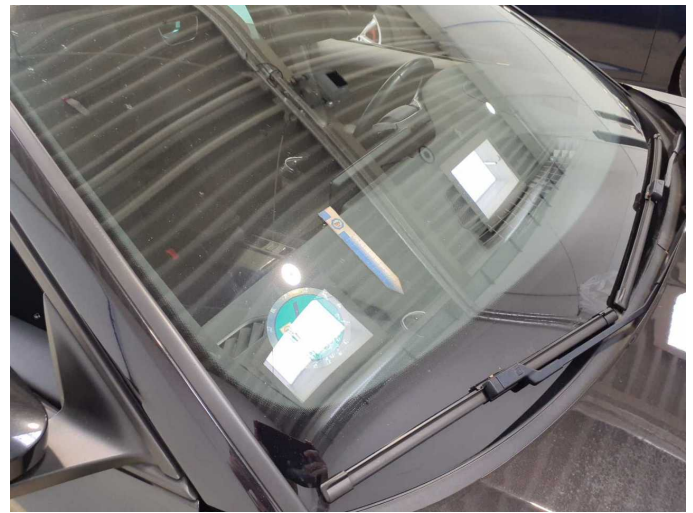
**Damage 8:** Boot lid / rear door: Boot lid - Corrosion - Repair and paint



**Damage 8:** Boot lid / rear door: Boot lid - Corrosion - Repair and paint



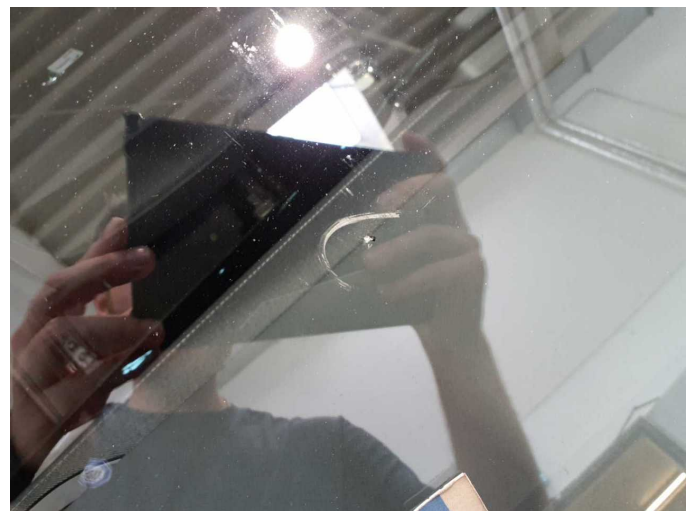
**Damage 8:** Boot lid / rear door: Boot lid - Corrosion - Repair and paint



**Damage 9:** Vehicle glazing: Windscreen - Broken / torn - repair according to calculation



**Damage 9:** Vehicle glazing: Windscreen - Broken / torn - repair according to calculation



**Damage 9:** Vehicle glazing: Windscreen - Broken / torn - repair according to calculation



**Damage 10:** Roof: Roof - Corrosion - Repair and paint



**Damage 10:** Roof: Roof - Corrosion - Repair and paint



**Damage 10:** Roof: Roof - Corrosion - Repair and paint



**Damage 10:** Roof: Roof - Corrosion - Repair and paint



**Damage 10:** Roof: Roof - Corrosion - Repair and paint



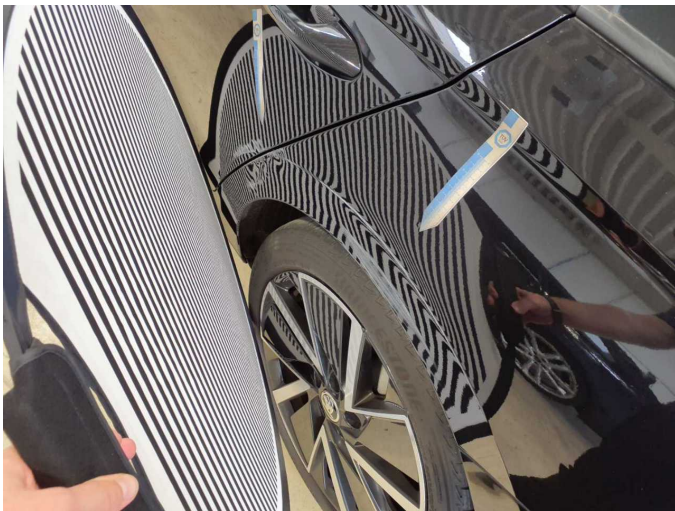
**Damage 10:** Roof: Roof - Corrosion - Repair and paint



Accident 1: Side - left



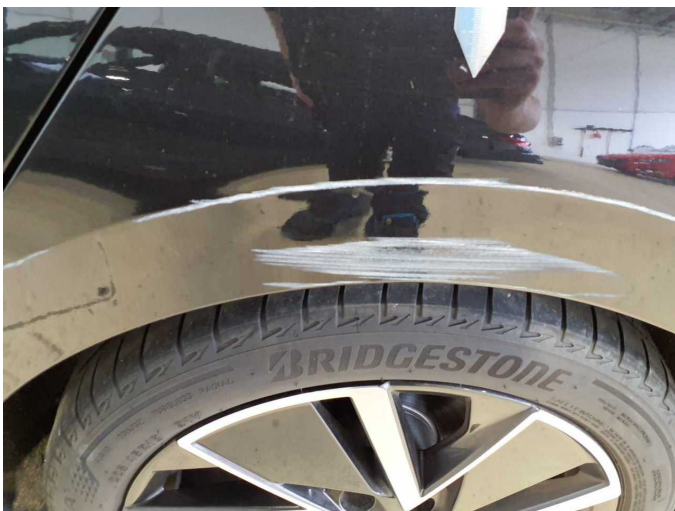
Accident 1: Side - left



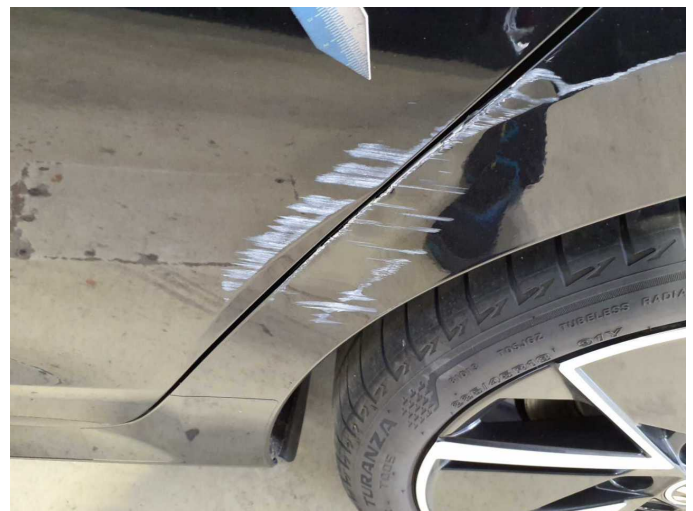
Accident 1: Side - left



Accident 1: Side - left



Accident 1: Side - left



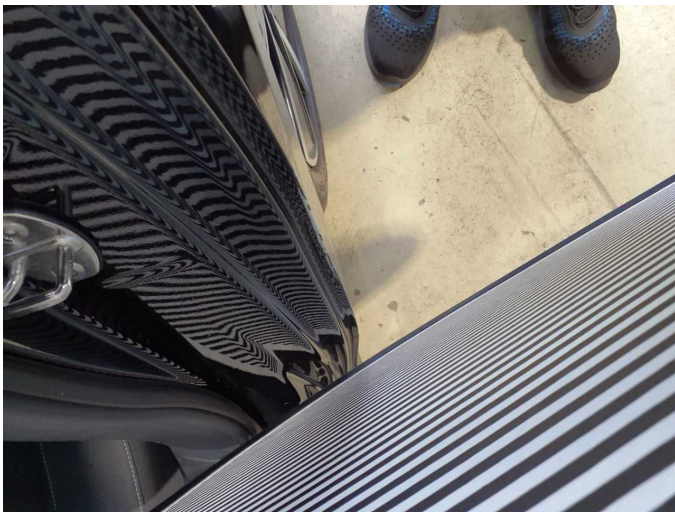
Accident 1: Side - left



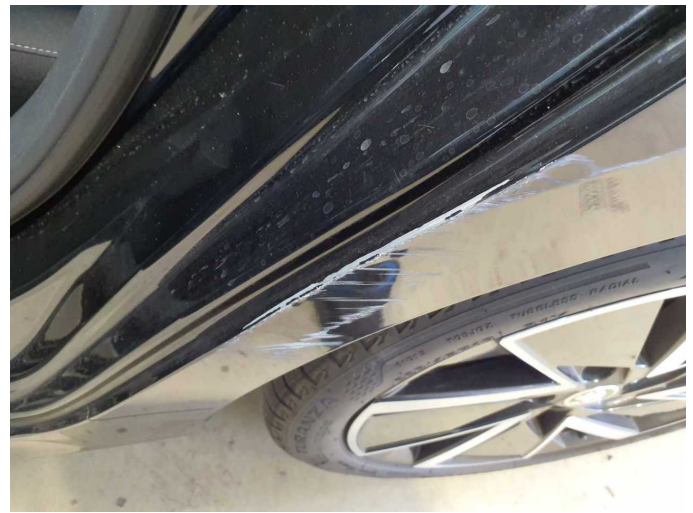
**Accident 1: Side - left**



**Accident 1: Side - left**



**Accident 1: Side - left**



**Accident 1: Side - left**



**Repainting 1: Bonnet**



**Repainting 1: Bonnet**



# Wartungshistorie

(gemäß Auftraggeber Informationen)

Fahrgestellnummer: TMBJJ8NX2PY060010  
Hersteller / Modell: SKODA SKODA Octavia Combi 2.0 TDI DSG Sportline

Datum	KM-Stand	Beschreibung
22.05.2026	176.266	Kraftstofffilter ern; Luftfiltereinsatz ern; Motoröl b. Wartung; Ölfilter ern; Ölwechsel; Systemtest/Eigendiagnose; Wartung Sonstiges
07.04.2026	170.380	AU; Bremse Sonstiges; Bremsklötze hinten; Bremsscheiben + Klötze h; Bremsscheiben hinten
08.12.2025	150.638	Regelwartungsdienst; Wartung Sonstiges
27.10.2025	143.512	Bremse Sonstiges; Bremsklötze vorne; Bremsscheiben vorne; Motoröl b. Wartung; Ölfilter ern; Ölwechsel; Wartung Sonstiges
14.05.2025	119.360	Getriebeöl ern/prüfen; Regelwartungsdienst; Wartung Sonstiges
31.03.2025	110.914	Bremsflüssigkeit; Bremsflüssigkeit ern; Motoröl b. Wartung; Ölfilter ern; Ölwechsel; Wartung Sonstiges; Wartung Sonstiges
30.09.2024	87.863	Bremse Sonstiges; Bremsklötze hinten; Bremsklötze vorne; Bremsscheiben hinten; Bremsscheiben vorne; Kraftstofffilter ern; Luftfiltereinsatz ern; Regelwartungsdienst; Systemtest/Eigendiagnose; Wartung Sonstiges
16.08.2024	80.448	Motoröl b. Wartung; Ölfilter ern; Ölwechsel; Wartung Sonstiges
25.03.2024	57.808	Regelwartungsdienst; Wartung Sonstiges
15.02.2024	49.999	Motoröl b. Wartung; Ölfilter ern; Ölwechsel; Wartung Sonstiges
21.11.2023	38.820	Bremse Sonstiges; Bremsklötze vorne; Bremsscheiben vorne
28.08.2023	28.339	Motoröl b. Wartung; Regelwartungsdienst; Wartung Sonstiges