

Expertise

Protocol number: 46169471
Order No. / Reference: 26533543
Inspection date: 24 Jun 2026

Manufacturer: Mercedes-Benz

Model: C 220 d T 9G-TRONIC AMG Line

VIN: W1KAH0EB1PF104971



Vehicle details

Manufacturer / Type / Model / Equipment

Mercedes-Benz C 220 d T 9G-TRONIC AMG Line

Vehicle Identification number W1KAH0EB1PF104971

Mileage (Read) 129,197 km

First registration 26 Apr 2023

Number of holders 1

Power / Engine displacement 147 kw / 1,993 ccm

Fuel type / Cylinder Hybrid Diesel / E / 4

Gearbox / Number of gears Automatic / 9

Type of drive Rear drive

Type of vehicle Station wagon

Colour / colour code OBSIDIANSCHWARZ -
METALLICLACK

Doors / Seats 5 / 5

Upholstery type Leather

Colour of upholstery Black



Vehicle details

Maintenance booklet / proof	digital proof / complete	Next maintenance in	199 Tag(e)
Last service on / at	12/2025 at 106,763 km		
Key is / should be	2 / 2	FZG documents	ZB#2 (B) was available (copy), ZB#1 (S) was not available.
		Letter No.	GS692191
Previous damage / Accident	None detectable	Repainting	None detectable
Inspection conditions	sufficient	Lifting equipment / pit	No
Test drive	Not performed	Engine function test	Performed
Manufacturer key number/ type code number	2222 / AYH 00333		
Emission standard	EURO6;WLTP;AP;PI/CI; M, N1 I	fine dust sticker	
Permitted total weight	2,400 kg	Empty weight	

Tyres

Mounted tyres

#	Tyre size	Type of tyre	Manufacturer	Tread depth
1)	225/45 R18 95Y	Summer tyres on Light alloy	Continental	5mm / 5mm
2)	245/40 R18 97Y	Summer tyres on Light alloy	Continental	4mm / 4mm

Additional tyres

#	Tyre size	Type of tyre	Manufacturer	Tread depth
1)	225/45 R18 95H	Winter tyres on Light alloy	Goodyear	4mm / 4mm
2)	225/45 R18 95H	Winter tyres on Light alloy	Goodyear	5mm / 5mm

Legend: Tread depth information for the left tire is listed first, for the right tire it is listed second on the axle in the direction of travel.

TÜV SÜD Auto Partner GmbH
Wiesenring 2
04159 Leipzig

Inspection location
ARS Altmann AG Automobillogistik
Römerstraße 3
64560 Riedstadt



Equipment



Standard equipment

- Airbag for driver and front passenger
- Airbag: Center airbag (Additional airbag for increased front occupant protection in the event of a side impact)
- Airbag: Sidebag for driver and front passenger (combined thorax/pelvisbag)
- Airbag: Windowbag for driver and front passenger
- Ambient lighting with 64 light colors
- AMG floor mats
- Left and right exterior mirrors are heated and electrically adjustable
- Brake system with larger brake discs on the front axle
- Brake assist, active
- black roof rails
- Double cup holder at the front
- EASY-PACK tailgate (with electric operation for opening and closing)
- Electronic Stability Program (ESP) (including Anti-lock Braking System (ABS) and Traction Control System (ASR))
- Speed Limit Assistant (The Speed Limit Assistant detects and displays speed limits.)
- Heated rear window
- Instrument panel and door sills in ARTICO man-made leather in black nappa look
- Mechanical child safety lock for the rear doors
- Rear headrests (3)
- Front headrests
- Cargo area cover including EASY-PACK safety net
- LED High Performance headlights (The elements of the LED High Performance headlights: - Torch and trifunctional light guide for daytime running lights, position lights and turn signals - Multi-chamber reflector system with 4 individual reflectors each) for low beam and high beam. The elements of the rear lights in LED technology: - All light functions in full LED technology - Tail light - Brake light and parking light - Rear fog light (only on the left side) - Turn signals - Reversing light - 3rd brake light)
- Mercedes-Benz Emergency Call System (can provide a crucial time advantage in an emergency. A communication module with its own SIM card automatically triggers an emergency call upon detection of an accident, which can shorten the time until emergency services arrive. The emergency call can also be triggered manually to organize assistance.)
- Center console in high-gloss black
- Package: Interior lighting package (Illuminated glove compartment - Lighting for wireless mobile interface or mobile phone storage - Lighting for the storage compartment in the center console or the double cupholders - Lighting for the storage compartment under the center console armrest - Two vanity lights in front - Two reading lights in the overhead control unit - Two reading lights in the interior mirror in conjunction with mirror parking - Two reading lights and interior light function in the rear grab handles - Lighting for the trunk or cargo area)
- Airbag: Automatic passenger airbag deactivation (The system automatically deactivates the passenger airbag as soon as it detects a rear-facing child seat or registers that the passenger seat is unoccupied. A transponder in the child seat is not necessary. If it detects that an adult is taking the seat, the airbag is automatically activated, reducing the risk of incorrect operation.)
- AMG sports pedal assembly made of brushed stainless steel with rubber studs
- Basic services (breakdown management, maintenance management, accident management, telediagnosis, remote vehicle diagnostics)
- Diesel particulate filter
- DYNAMIC SELECT (consisting of driving programs: Comfort, Sport, Eco mode)
- ECO start/stop function
- Chassis: Sport chassis with sport direct steering
- Electric windows (4-way)
- Transmission: 9-speed automatic, 9G-TRONIC
- rear window wiper
- Interior headliner fabric crystal grey
- ISOFIX child seat attachment with top tether in the rear
- KEYLESS-GO start function
- THERMATIC automatic climate control with 1 climate zone (controlled via the central display or the climate control unit in the center console) - Sensor system for detecting, for example, interior/ exterior temperature, solar radiation, humidity and dew point - Ventilation system consisting of: 3 center vents in the center area and 2 side vents, 2 ventilation openings each in the footwell for driver and front passenger - Fine dust filter for filtering dust, soot and pollen - Dew point sensor, continuous defroster vent under the windshield and 2 fixed defroster vents)
- Steering wheel: Multifunction sports steering wheel in Nappa leather (sporty steering wheel in a 3-twin-spoke design, flattened at the bottom - finished in Nappa leather, deeply embossed in the grip area - horizontal double spokes in high-gloss black, vertical double spokes in silver chrome - shift paddles in silver chrome - control via touch panels: left: instrument cluster, cruise control and limiter or Active Distance Assist DISTRONIC; right: multimedia system (e.g., audio volume and track selection, telephony and navigation), touch sensitivity adjustment)
- Package: Storage (storage compartment with net on the left in the load compartment - double cup holder in the center console for 2 x 750 ml - elastic tension strap on the right in the load compartment - folding box under the load floor - 1 additional bag hook on the right in the load compartment - recess including storage tray on the right in the load compartment - map pockets on the backs of the front seats - reversible mat in the boot floor)
- Upholstery: ARTICO leatherette/MICROCUT microfiber



- Radio: MBUX (fully digital instrument display with 26 cm (10.25") color LCD display and a resolution of 1440 x 540 pixels - Bluetooth telephony / audio - WLAN hotspot)
 - Radio accessories: Digital radio (DAB)
 - Radio accessory: Communication module (LTE) for using Mercedes me connect services (The communication module with a vehicle-integrated, LTE-enabled SIM card offers you added comfort and safety. It continuously connects you to your vehicle – and the vehicle to infrastructure such as the Mercedes-Benz server or the internet. This allows you to use services such as Mercedes me connect Live Traffic Information.)
 - Wheels: 45.7 cm (18") AMG light-alloy wheels in 5-spoke design (aerodynamically optimized, painted in tremolite grey and polished with front axle 225/45 R 18 on 7.5 J x 18 H ET 40, rear axle 245/40 R 18 on 9 J x 18 H ET 58)
 - Windscreen wipers with rain sensor
 - Seats: Rear seat backrests foldable
 - Lane Keeping Assist, active
 - Cruise control
 - High-visibility vest for drivers
 - Central locking with remote control
- Radio: Extended MBUX functions (personalization (profiles) and prediction functions - MBUX voice assistant "LINGUATRONIC" with natural language understanding - activation via Hey Mercedes - learning function of the MBUX voice assistant through connection with a cloud-based online dictionary, Mercedes me connect service free of charge for 3 years from activation - Wi-Fi hotspot - internet radio)
 - Radio accessories: Central display (High-resolution central display, slightly inclined towards the driver with a 24 cm (9.5") screen diagonal, with MBUX multimedia system - touch display with LCD technology)
 - Tire pressure monitoring system (TPMS)
 - Remote Services Plus (Communication module - Mercedes me services: remote vehicle status query, programming of auxiliary heating/ventilation, remote door locking and unlocking, sunroof/windows with remote locking and opening including ventilation remote control, personalization, vehicle location, vehicle tracking, geographic vehicle monitoring, parking service monitoring, finder function (Remote Vehicle Finder), notification when exceeding the driving speed, Send2Car function)
 - Electronic immobilizer
 - Decorative elements, metal structure



Extra equipment

- Airbag: Side airbags in the rear
- Chassis: Chassis with adaptive damping adjustment
- Fingerprint scanner (color-illuminated fingerprint scanner in the control bar below the OLED media display - two fingerprints can be stored per user - faster access replaces PIN entry - protects personal data such as profiles as well as office and payment functions)
- Head-up display
- Black fabric headliner
- THERMATIC automatic climate control with 2 climate zones (control via the central display or the climate control unit in the center console; sensor system for detecting, for example, indoor/outdoor temperature, sunlight, humidity, and dew point; automatic recirculation (only in conjunction with navigation system); ventilation system consisting of: 3 center vents and 2 side vents; fine dust activated carbon filter for filtering dust, soot, and pollen; dew point sensor; residual heat function for efficient use of engine waste heat)
- Package: Advanced Light Package (DIGITAL LIGHT: -HD system with projection module (more than 1.3 million pixels per headlight) and MULTIBEAM LED background module -Adaptive Highbeam Assist Plus -ULTRA RANGE high beam with a range of more than 600 m -Topography compensation -Cornering light with roundabout and intersection function -Active curve light with predictive control -Extended fog light, city light, country road light, motorway light, motorway high beam and bad weather light)
- Package: Assistance
- Package: Mirror package
- Upholstery: Nappa leather
- Radio accessories: Advanced sound system (with 9 speakers and 225 watts system power)
- Wheels: Complete summer wheel sets fitted at the factory
- Wheels: Winter complete set of wheels M+S 4x 45.7 cm (18") multi-spoke alloy wheels (black painted and polished with 225/45 R 18 on 7.5 J x 18 ET 40)
- Heated windshield washer system
- Seats: Sports seats
- Extendable sun visors (with illuminated cosmetic mirror, swiveling and extendable to the side)
- Type designation removed from trunk lid
- Decorative elements: wood, black, open-pore, aluminum lines
- ENERGIZING AIR CONTROL (Air quality sensor and one fine dust sensor each for indoor and outdoor use - Fine dust filtration with 2 filters - Activated carbon-based indoor air filter with filter layers against fine dust (PM2.5) and nitrogen oxides (NOx) or sulfur dioxides (SO2) as well as pollen - Automatic recirculation or fresh air switching depending on the measured air quality, taking into account the overall climate comfort control system - Air quality menu in the MBUX multimedia system to illustrate the measured values)
- Fuel tank with larger capacity
- Paint finish: MANUFAKTUR metallic
- Paint finish: Metallic
- Steering: Rear-axle steering (At speeds below 60 km/h, the rear wheels steer in the opposite direction to the front wheels – when parking, by up to 2.5° against the front axle angle. Above speeds above 60 km/h, the rear wheels steer up to 2.5° in the same direction as the front wheels.)
- Package: Advanced Comfort Package
- Package: Advanced Parking Package (12 ultrasonic sensors - 360° camera - Active Parking Assist with PARKTRONIC: detects free parking spaces, assisted parking, visual and acoustic warning, display of camera and ultrasonic data in the media display - Cross traffic warning: can provide visual and acoustic warnings when reversing out of a parking space and, if necessary, automatically initiate emergency braking - Reverse maneuvering brake: can trigger a braking process - Drive-away assist)
- Package: High-End Infotainment Package (MBUX Navigation Premium (hard drive navigation, pre-installation for Live Traffic Information), Traffic Sign Assist, Smartphone Integration (connects the mobile phone wirelessly to the multimedia system via Apple CarPlay and Android Auto), Wireless charging system for mobile devices in the front, Driver display - 31.2 cm (12.3") color LCD display, Central display - 30.2 cm (11.9") touch display, MBUX Augmented Reality for navigation.)
- Seats: Seat climate control for driver and front passenger (including seat heating and seat ventilation)
- Phone accessories: Wireless charging system for mobile devices
- Heat and noise insulating acoustic glass (for windshield and front doors)



Brief expert findings

Documents submitted	At the time of the inspection, the vehicle registration certificate Part 2 (title) was available, but the vehicle registration certificate Part 1 (document) was not. (Copy)
VIN comparison	The vehicle identification number (VIN) was read from the vehicle and its conformity with the submitted documents was confirmed by the undersigned during the inspection.
Inspection	The inspection conditions were sufficient for the assessment of the vehicle. No lifting equipment or pit was available for inspecting the vehicle. Therefore, inspection of the vehicle's underside was only possible to a limited extent.
Test drive	No test drive/shunting maneuver was carried out during the inspection of the vehicle.
Engine function test	An engine test run was performed.

Value reducing factors

No.	Component group	Description
1	2nd wheel set	1 tyre - Damaged - Replace
2	Wheel / tyres	Alloy rim - front left side - Scratched - Replace
3	Wheel / tyres	Alloy rim - front right side - Scratched - Replace
4	Bonnet	Bonnet - Scratch(es) - Paint
5	Front bumper	Front bumper - Scratch(es) - Paint
6	Vehicle glazing	Windscreen with lane departure assistant - Broken / torn - repair according to calculation

Order/Scope of Order

An order was placed to prepare a sales report for the described vehicle. This report includes the following:

- Description of key vehicle information
- Documentation of equipment features
(*Delivery by third-party service providers*)
- Documentation of damage, defects, missing parts
- Documentation of prior damage, unrepaired prior damage, repainting
- A brief visual or functional inspection of the equipment details, if possible.
(*Functional testing of driver assistance systems is not included in the scope of services!*)
- a photographic documentation of the vehicle

Basis for the order

This product is based on the guidelines for vehicle returns and valuations published by Alphabet Fleet GmbH. The expert makes the specific findings in each individual case objectively, within the framework of the prescribed standards, based on their own expertise.

The vehicle inspection takes place in a fully assembled, unassembled state.

Damage or defects that can only be detected during disassembly/diagnostic work or through further investigation remain within the realm of prognostic risk. An increased risk exists due to concealed defects caused by fraudulent misrepresentation and which were not identifiable by the expert.

Damage or defects resulting from normal use or wear and tear of the vehicle will be accepted in accordance with the applicable standard.

There was no explicit identification or monetary consideration of the expected features within the product.

Features which, in their nature and extent, slightly exceed normal use but do not constitute unacceptable damage, will be documented and indicated as signs of wear, if applicable.

Damage or defects that, according to the applicable standard, can no longer be attributed to normal use or wear and tear are listed under "Value Reducing Factors" in the product description.

Depending on the product specification, a monetary ID can be provided. If this takes place, the costs can be 100% or pro rata depending on the vehicle's age and mileage.



Previous damages

No apparent prior damage that had been repaired could be found on the vehicle.

Comments

Die Unterbodenbesichtigung war nur ebenerdig & eingeschränkt möglich. Mehrkosten möglich.



Figure 1: Diagonal front (left)



Figure 2: Diagonal front (right)



Figure 3: Diagonal rear (left)



Figure 4: Diagonal rear (right)

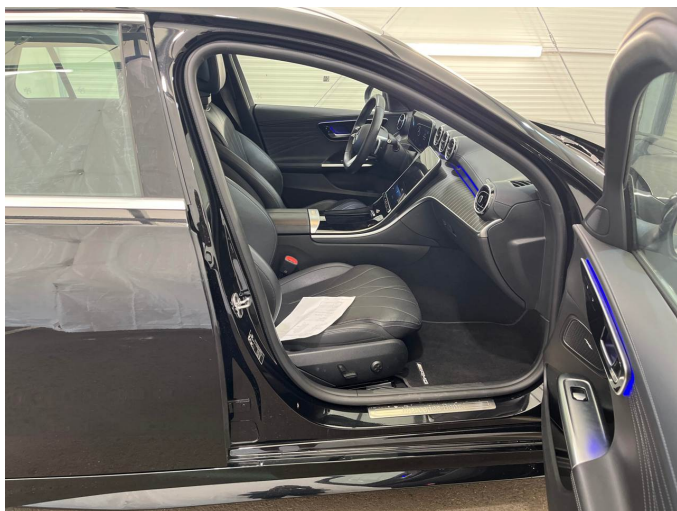


Figure 5: Interior - front



Figure 6: Interior - rear



Figure 13: Documents

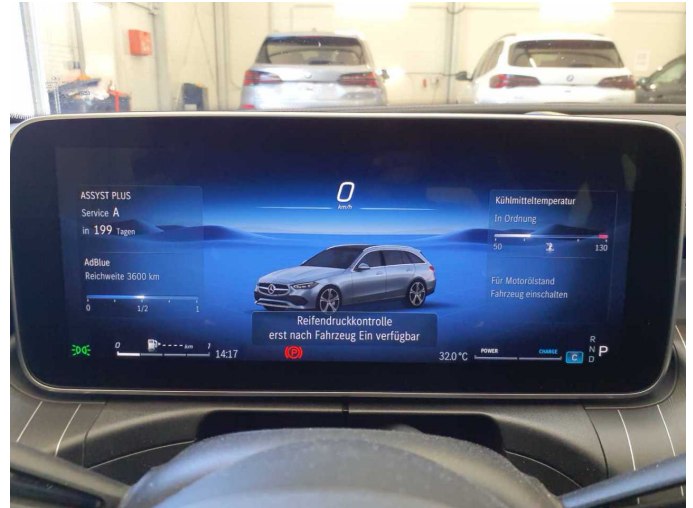


Figure 14: Documents



Figure 15: Additional tyres



Figure 16: Navigation



Figure 17: Misc.

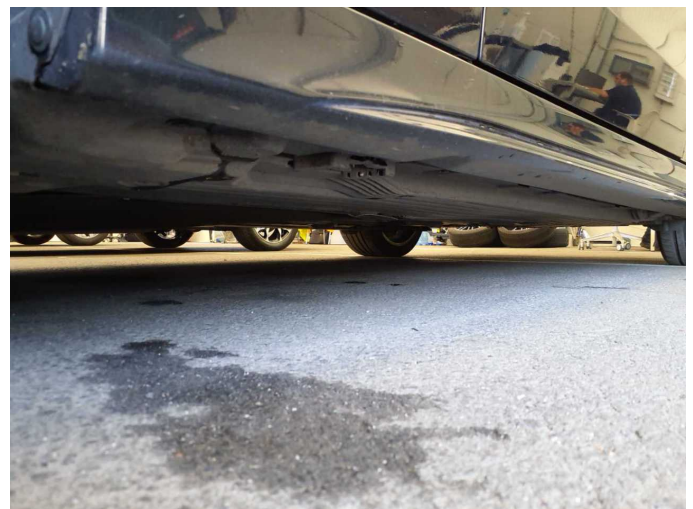


Figure 18: Misc.



Figure 19: Misc.



Figure 20: Misc.



Figure 21: Misc.



Figure 22: Misc.



Figure 23: Misc.

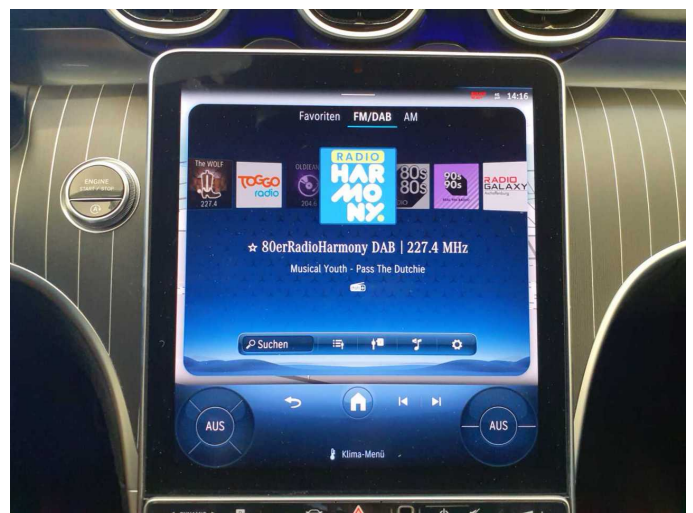


Figure 24: Misc.



Figure 25: Misc.



Figure 26: Misc.



Figure 27: Misc.



Figure 28: Misc.

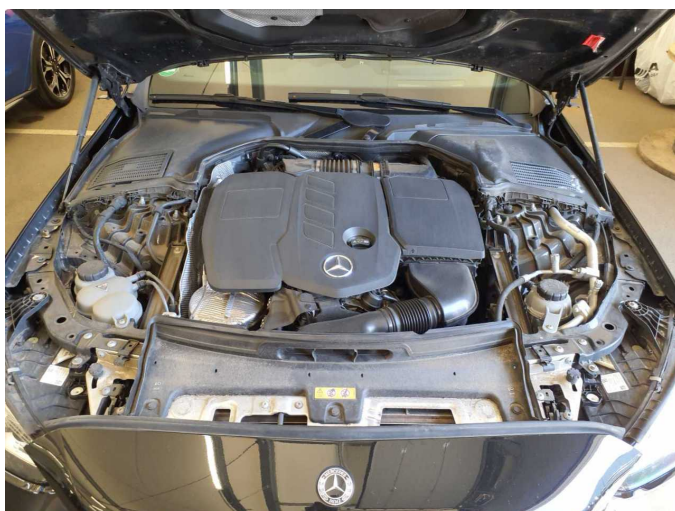


Figure 29: Misc.

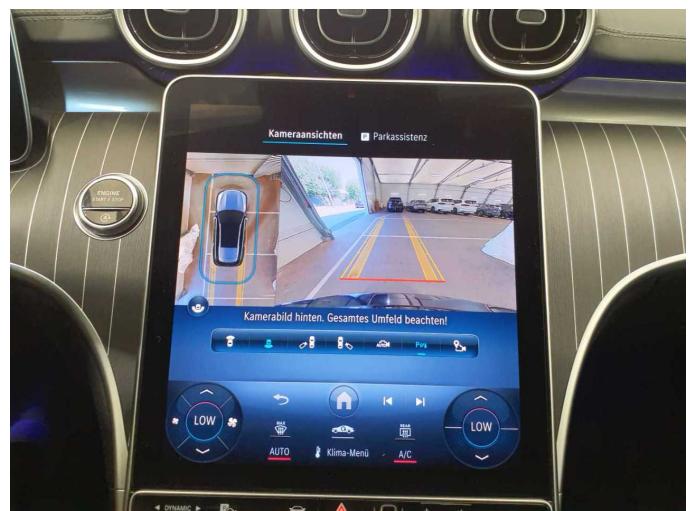


Figure 30: Misc.



Damage 1: 2nd wheel set: 1 tyre - Damaged - Replace



Damage 1: 2nd wheel set: 1 tyre - Damaged - Replace



Damage 1: 2nd wheel set: 1 tyre - Damaged - Replace



Damage 1: 2nd wheel set: 1 tyre - Damaged - Replace



Damage 2: Wheel / tyres: Alloy rim - front left side - Scratched - Replace



Damage 2: Wheel / tyres: Alloy rim - front left side - Scratched - Replace



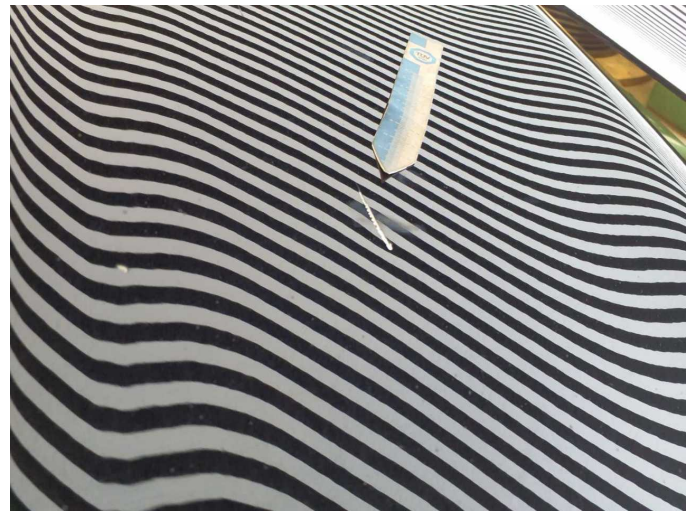
Damage 3: Wheel / tyres: Alloy rim - front right side - Scratched - Replace



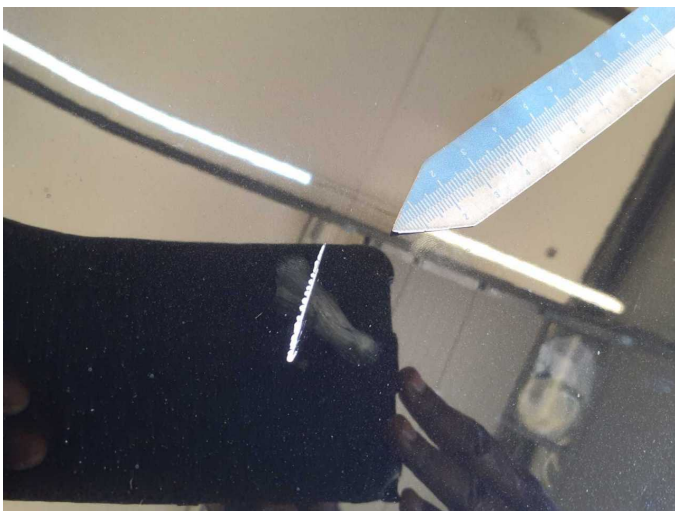
Damage 3: Wheel / tyres: Alloy rim - front right side - Scratched - Replace



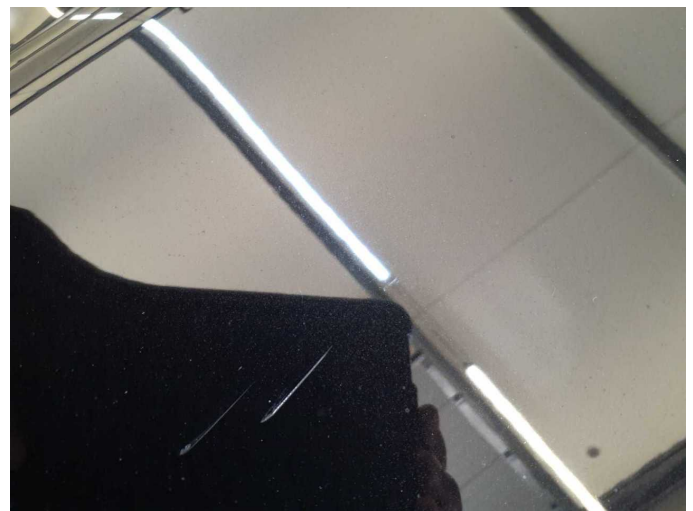
Damage 4: Bonnet: Bonnet - Scratch(es) - Paint



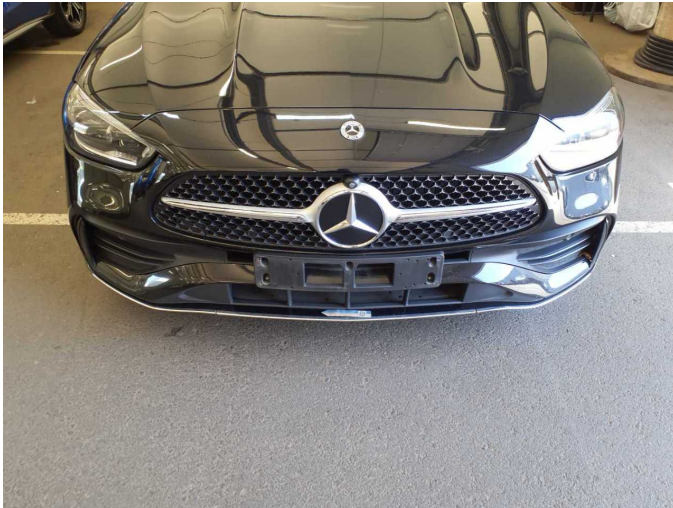
Damage 4: Bonnet: Bonnet - Scratch(es) - Paint



Damage 4: Bonnet: Bonnet - Scratch(es) - Paint



Damage 4: Bonnet: Bonnet - Scratch(es) - Paint



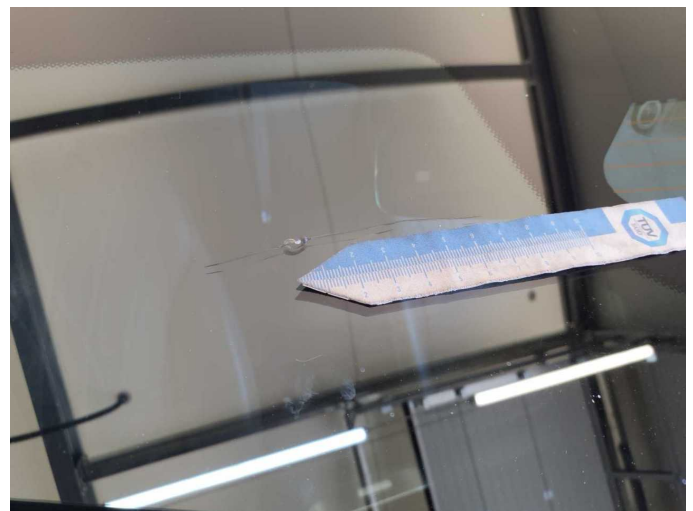
Damage 5: Front bumper: Front bumper - Scratch(es) - Paint



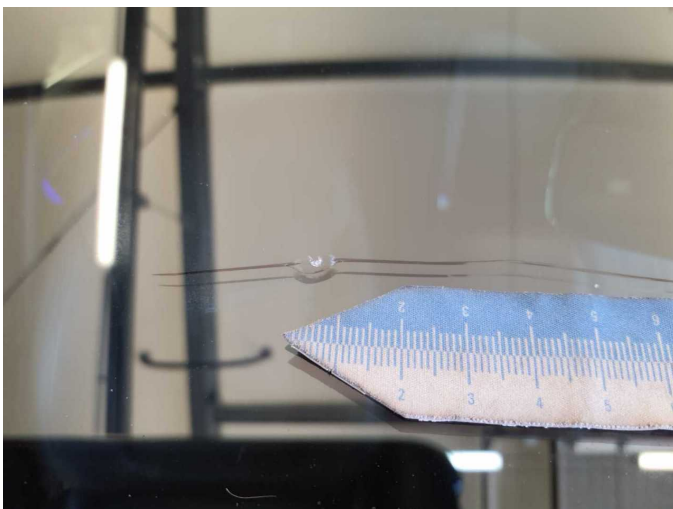
Damage 5: Front bumper: Front bumper - Scratch(es) - Paint



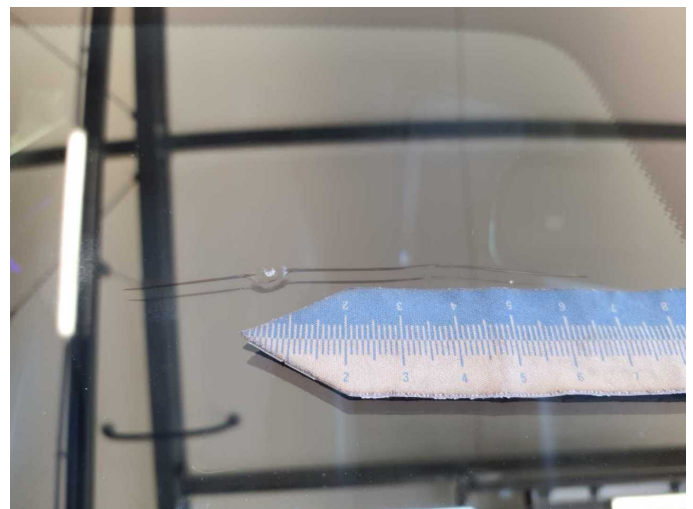
Damage 6: Vehicle glazing: Windscreen with lane departure assistant - Broken / torn - repair according to calculation



Damage 6: Vehicle glazing: Windscreen with lane departure assistant - Broken / torn - repair according to calculation



Damage 6: Vehicle glazing: Windscreen with lane departure assistant - Broken / torn - repair according to calculation



Damage 6: Vehicle glazing: Windscreen with lane departure assistant - Broken / torn - repair according to calculation



Wartungshistorie

(gemäß Auftraggeber Informationen)

Fahrgestellnummer: W1KAH0EB1PF104971

Hersteller / Modell: MERCEDES-BENZ MB C 220 d T 9G-TRONIC AMG Line

Datum	KM-Stand	Beschreibung
04.12.2025	106.763	Regelwartungsdienst
17.04.2025	79.002	Wartung Sonstiges
16.01.2025	79.002	Bremsscheiben vorne; Regelwartungsdienst
24.07.2024	52.237	Regelwartungsdienst
03.01.2024	26.653	Regelwartungsdienst