

Expertise

Protocol number: 46184538
Order No. / Reference: 26606884
Inspection date: 25 Jun 2026

Manufacturer: Ford

Model: Transit Custom 280 L1H1 LKW VA Trend

VIN: WF0YXXTTGYNT05961



Vehicle details

Manufacturer / Type / Model / Equipment

Ford Transit Custom 280 L1H1 LKW VA Trend

Vehicle Identification number WF0YXXTTGYNT05961

Mileage (Read) 120,712 km

First registration 16 Aug 2022

Number of holders 1

Power / Engine displacement 96 kw / 1,995 ccm

Fuel type / Cylinder Diesel / 4

Gearbox / Number of gears Manual / 6

Type of drive Front drive

Type of vehicle Van

Colour / colour code Frost-Weiß

Doors / Seats 4 / 3

Upholstery type Cloth

Colour of upholstery Black-Anthracite

Vehicle with smoke odor no



Vehicle details			
Maintenance booklet / proof	digital proof / complete	Next maintenance in	40,000 km
Last service on / at	05/2026 at 116,660 km		
Key is / should be	2 / 2	FZG documents	ZB#2 (B) was available (copy), ZB#1 (S) was not available.
		Letter No.	GP429769
Previous damage / Accident	Detectable	Repainting	None detectable
Inspection conditions	sufficient	Lifting equipment / pit	yes
Test drive	short drive on the company premises	Engine function test	Performed
Manufacturer key number/ type code number	8566 / BMU 07069		
Emission standard	EURO6;WLTP;AR;PI/CI;N1 III, N2	fine dust sticker	
Permitted total weight	2,800 kg	Empty weight	

Tyres

Mounted tyres				
#	Tyre size	Type of tyre	Manufacturer	Tread depth
1)	215/65 R15 104T	Winter tyres on Steel rim with wheel cover	Continental	6mm / 6mm
2)	215/65 R15 104T	Winter tyres on Steel rim with wheel cover	Continental	9mm / 9mm

Additional tyres				
#	Tyre size	Type of tyre	Manufacturer	Tread depth
1)	215/65 R16 104T	Summer tyres on Steel	Goodyear	6mm / 6mm
2)	215/65 R16 104T	Summer tyres on Steel	Goodyear	7mm / 7mm

Replacement				
Typ	Tyre size	Type of tyre	Manufacturer	Tread depth
E	215/65 R15 104T C	Summer tyres on Steel	Goodyear	9 mm

Legend: Tread depth information for the left tire is listed first, for the right tire it is listed second on the axle in the direction of travel.



Equipment

Standard equipment

- 1 battery
- Anti-lock braking system with electronic brake force distribution (EBD)
- roof, flat
- Double-leaf rear door with 180° opening angle (without window)
- Electronic Stability Program (ESP) with Traction Control System (TCS)
- FordPass Connect
- Generator, 240 A
- Cruise control including imitation leather steering wheel
- Lockable glove compartment with lid
- Front air conditioning
- Paint finish: Solid color paint
- Cargo area floor: Vinyl floor covering, sealed, "Easy Clean"
- Emergency brake assist including emergency brake light
- Front and rear parking pilot system including fog lights
- Radio: Audio system 13 additionally with DAB/DAB+
- Wheels/Tires: Spare wheel, steel wheel
- Headlights: Halogen projector headlights
- Sliding door: Sliding door, right
- Mud flaps front and rear
- Half-height side wall cladding
- Seat belts
- Start-stop system
- Power outlet: 12-volt connection
- Immobiliser
- Central locking with remote control
- Second key with remote control

Extra equipment

- LED lights in the cargo area
- Radio: Audio System 24: Ford audio system including Ford SYNC 3 with AppLink, DAB/DAB+, navigation system. (Radio (FM/AM) 8" touchscreen multifunction display (20.32 cm), 4 speakers, FordPass Connect Wi-Fi hotspot, integrated control panel and audio remote control on the steering wheel, Ford SYNC 3 with touchscreen (hands-free system with voice control, SMS readout/sending function, Bluetooth, Emergency Assistance...), AppLink (advanced voice control, privacy mode, Android Auto and Apple CarPlay support, capacitive touchscreen technology,...), dynamic navigation, lane guidance, road map for Western Europe)

- Driver's side airbag
- Exterior mirrors, electrically adjustable and heated
- On-board computer
- Headliner in driver's cab
- Tachometer
- Third brake light
- Front electric windows
- Ford Easy Fuel
- Warranty: 2-year Ford new car warranty including Ford Assistance mobility guarantee
- Transmission: 6-speed transmission
- Interior lighting with delay circuit
- Fuel tank 70 l
- Cargo area lighting with activatable switch-off delay
- Steering column, adjustable in height and reach
- Package: Style-Color Package
- Particulate filter: diesel particulate filter
- Wheel trims
- Wheels: Steel wheels 6.5 J x 15 with 215/65 R 15 tires
- Sliding door entry light automatically illuminates when the door is opened
- Side protection strips
- Power steering
- Seats: Seat package 13 - partition (load-through flap), without window (Custom Truck Trend)
- Lashing eyes 8
- Heat-insulating glazing, lightly tinted
- Auxiliary heater, electric

- Airbag (passenger side)
- All-weather floor mats, front
- Fire extinguisher 1 kg
- Package: Service Line (shelving systems (left and right) - vise - ventilation for transporting gas cylinders - HDF wall cladding - screen-printed wooden floor in the cargo area (the standard lashing eyes are omitted))
- Power outlet: 12-volt connection in the cargo area (D-pillar)
- Rear swing door without window (without interior mirror)
- Voltage converter (230 V/150 Watt (socket))
- Winter complete wheels steel



Brief expert findings

Documents submitted	At the time of the inspection, the vehicle registration certificate Part 2 (title) was available, but the vehicle registration certificate Part 1 (document) was not. (Copy)
VIN comparison	The vehicle identification number (VIN) was read from the vehicle and its conformity with the submitted documents was confirmed by the undersigned during the inspection.
Inspection	The inspection conditions were sufficient for the assessment of the vehicle. Lifting equipment and/or a pit were available for examining the vehicle.
Test drive	A short maneuvering and shunting exercise was carried out on the company premises.
Engine function test	An engine test run was performed.

Value reducing factors

No.	Component group	Description
1	Door - front left side	Door seal - Loose - Un- / install
2	Seat - front	Seat cover - left side - Holes - Smart repair
3	Engine	Engine cowling lower front - Broken / torn - Replace
4	Door - front right side	Door - Dent / paintcoat damage - Smart repair
5	Boot lid / rear door	Boot lid - Dent / paintcoat damage - Loss in value
6	Rear bumper	Bumper - rear left side (+ Schmutzfänger verschürft erneuern) - Scratched - Repair and paint
7	Body	D-pillar - right side - Dent / paintcoat damage - Repair and paint

Wear and tear

No.	Component group	Description
1	Bonnet	Bonnet - Stone chips - No deduction
2	Wing mirror - left side	Cap - Scratch(es) - No deduction
3	Body	Partition wall - Scratch(es) - No deduction
4	Trim / covers	Door trim - front left side - Scratch(es) - No deduction
5	Front bumper	Front bumper - Scratch(es) - No deduction
6	Interior	Cargo area floor - Broken / torn - No deduction
7	Rear bumper	Bumper - rear centre (Verlade- / Einstiegsbereich) - Scratch(es) - No deduction
8	Front bumper	Spoiler - Scratched - No deduction

The vehicle shows signs of wear and tear commensurate with its age and use.

Previous damages

No.	Previous damage	Extent of damage (Net)
1	Side right, Provided by user / customer, from 16 Nov 2022	1.683,60 €

Order/Scope of Order

An order was placed to prepare a sales report for the described vehicle. This report includes the following:

- Description of key vehicle information
- Documentation of equipment features
(*Delivery by third-party service providers*)
- Documentation of damage, defects, missing parts
- Documentation of prior damage, unrepaired prior damage, repainting
- A brief visual or functional inspection of the equipment details, if possible.
(*Functional testing of driver assistance systems is not included in the scope of services!*)
- a photographic documentation of the vehicle



Basis for the order

This product is based on the guidelines for vehicle returns and valuations of light commercial vehicles published by Alphabet Fleet Management GmbH. The expert makes the specific findings in each individual case objectively, within the framework of the prescribed standards, based on their own expertise.

The vehicle inspection takes place in a fully assembled, unassembled state.

Damage or defects that can only be detected during disassembly/diagnostic work or through further investigation remain within the realm of prognostic risk. An increased risk exists due to concealed defects caused by fraudulent misrepresentation and which were not identifiable by the expert.

Damage or defects resulting from normal use or wear and tear of the vehicle will be accepted in accordance with the applicable standard.

There was no explicit identification or monetary consideration of the expected features within the product.

Features which, in their nature and extent, slightly exceed normal use but do not constitute unacceptable damage, will be documented and indicated as signs of wear, if applicable.

Damage or defects that, according to the applicable standard, can no longer be attributed to normal use or wear and tear are listed under "Value Reducing Factors" in the product description.

Depending on the product specification, a monetary ID can be provided. If this takes place, the costs can be 100% d or pro rata depending on the vehicle's age and mileage.

Previous damages

According to available information previous damages were repaired at the vehicle. Traces of repairs, which allow conclusions about the area of repair, were not recognizable during the inspection.



Figure 1: Diagonal front (left)



Figure 2: Diagonal front (right)



Figure 3: Diagonal rear (left)



Figure 4: Diagonal rear (right)

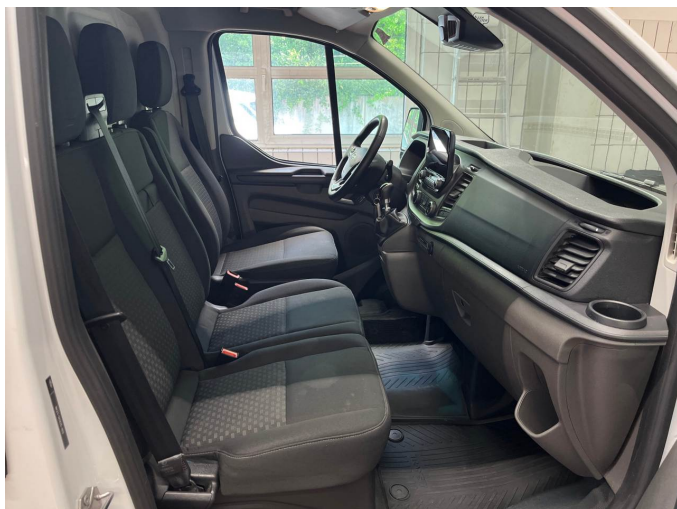


Figure 5: Interior - front



Figure 6: Interior - rear



Figure 7: Instrument cluster



Figure 8: Instrument panel



Figure 9: Interior 360° view



Figure 10: Cargo area



Figure 11: VIN



Figure 12: Mounted tyres



Figure 19: Misc.



Figure 20: Misc.



Figure 21: Misc.



Figure 22: Misc.



Figure 23: Misc.



Figure 24: Misc.



Figure 25: Misc.



Figure 26: Misc.



Figure 27: Misc.



Figure 28: Misc.



Figure 29: Misc.



Figure 30: Misc.



Figure 31: Misc.



Figure 32: Misc.



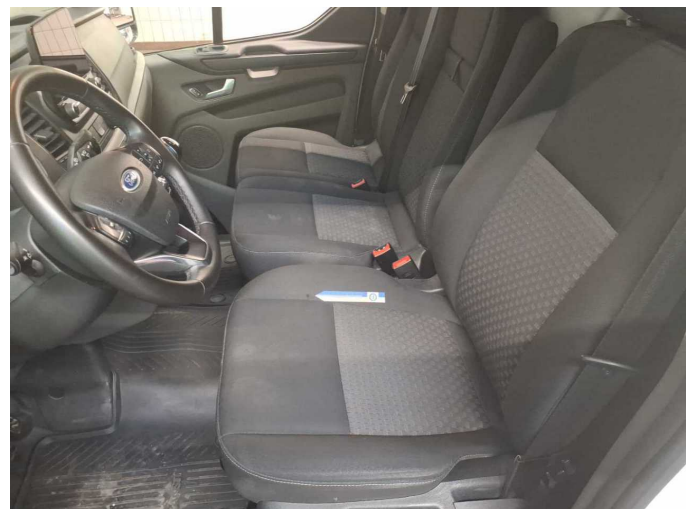
Figure 33: Misc.



Damage 1: Door - front left side: Door seal - Loose - Un- / install



Damage 1: Door - front left side: Door seal - Loose - Un- / install



Damage 2: Seat - front: Seat cover - left side - Holes - Smart repair



Damage 2: Seat - front: Seat cover - left side - Holes - Smart repair



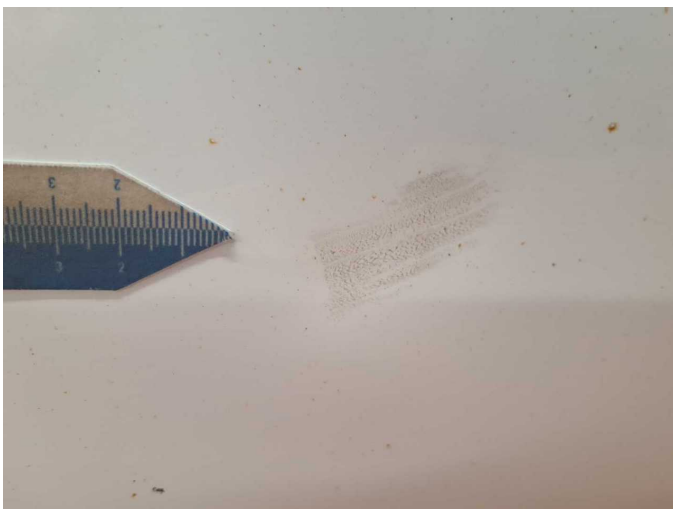
Damage 3: Engine: Engine cowling lower front - Broken / torn - Replace



Damage 4: Door - front right side: Door - Dent / paintcoat damage - Smart repair



Damage 4: Door - front right side: Door - Dent / paintcoat damage - Smart repair



Damage 4: Door - front right side: Door - Dent / paintcoat damage - Smart repair



Damage 5: Boot lid / rear door: Boot lid - Dent / paintcoat damage - Loss in value



Damage 5: Boot lid / rear door: Boot lid - Dent / paintcoat damage - Loss in value



Damage 5: Boot lid / rear door: Boot lid - Dent / paintcoat damage - Loss in value



Damage 5: Boot lid / rear door: Boot lid - Dent / paintcoat damage - Loss in value



Damage 5: Boot lid / rear door: Boot lid - Dent / paintcoat damage - Loss in value



Damage 5: Boot lid / rear door: Boot lid - Dent / paintcoat damage - Loss in value



Damage 5: Boot lid / rear door: Boot lid - Dent / paintcoat damage - Loss in value



Damage 6: Rear bumper: Bumper - rear left side (+ Schmutzfänger verschürft erneuern) - Scratched - Repair and paint



Damage 6: Rear bumper: Bumper - rear left side (+ Schmutzfänger verschürft erneuern) - Scratched - Repair and paint



Damage 6: Rear bumper: Bumper - rear left side (+ Schmutzfänger verschürft erneuern) - Scratched - Repair and paint



Damage 6: Rear bumper: Bumper - rear left side (+ Schmutzfänger verschürft erneuern) - Scratched - Repair and paint



Damage 6: Rear bumper: Bumper - rear left side (+ Schmutzfänger verschürft erneuern) - Scratched - Repair and paint



Damage 6: Rear bumper: Bumper - rear left side (+ Schmutzfänger verschürft erneuern) - Scratched - Repair and paint



Damage 7: Body: D-pillar - right side - Dent / paintcoat damage - Repair and paint



Damage 7: Body: D-pillar - right side - Dent / paintcoat damage - Repair and paint



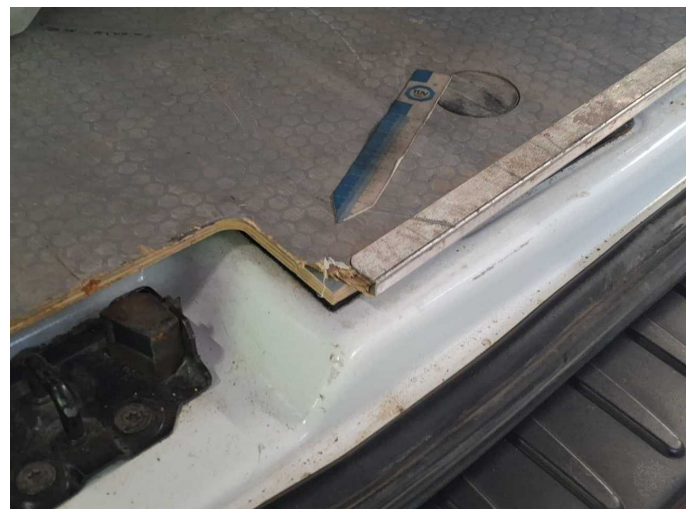
Damage 7: Body: D-pillar - right side - Dent / paintcoat damage - Repair and paint



Wear and tear 6: Interior: Cargo area floor - Broken / torn - No deduction



Wear and tear 6: Interior: Cargo area floor - Broken / torn - No deduction



Wear and tear 6: Interior: Cargo area floor - Broken / torn - No deduction



Wear and tear 6: Interior: Cargo area floor - Broken / torn - No deduction



Wear and tear 7: Rear bumper: Bumper - rear centre (Verlade- / Einstiegsbereich) - Scratch(es) - No deduction



Wear and tear 7: Rear bumper: Bumper - rear centre (Verlade- / Einstiegsbereich) - Scratch(es) - No deduction



Wear and tear 7: Rear bumper: Bumper - rear centre (Verlade- / Einstiegsbereich) - Scratch(es) - No deduction



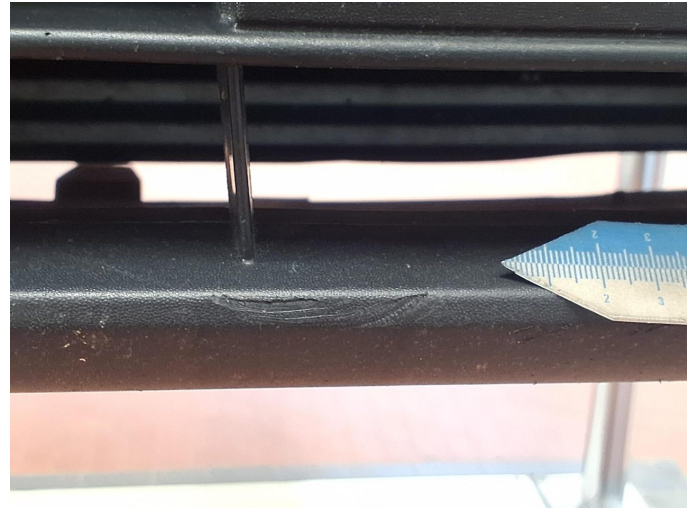
Wear and tear 8: Front bumper: Spoiler - Scratched - No deduction



Wear and tear 8: Front bumper: Spoiler - Scratched - No deduction



Wear and tear 8: Front bumper: Spoiler - Scratched - No deduction



Wear and tear 8: Front bumper: Spoiler - Scratched - No deduction



Wear and tear 8: Front bumper: Spoiler - Scratched - No deduction



Wartungshistorie

(gemäß Auftraggeber Informationen)

Fahrgestellnummer: WF0YXXTTGYNT05961
Hersteller / Modell: FORD FORD Transit Custom 280 L1H1 LKW VA Trend

Datum	KM-Stand	Beschreibung
08.05.2026	116.660	Motoröl b. Wartung; Ölfilter ern; Regelwartungsdienst
03.07.2025	71.035	Bremse Sonstiges; Bremsflüssigkeit ern; Bremsklötze hinten; Bremscheiben + Klötze h; Bremscheiben hinten; Luftfiltereinsatz ern; Motoröl b. Wartung; Ölfilter ern; Regelwartungsdienst
30.10.2024	60.082	AU
05.12.2023	34.569	Bremsklötze vorne; Kraftstofffilter ern; Motoröl b. Wartung; Ölfilter ern; Regelwartungsdienst; Systemtest/Eigendiagnose; Wartung Sonstiges