

Expertise

Protocol number: 46216102
Order No. / Reference: 26568465
Inspection date: 24 Jun 2026

Manufacturer: Ford

Model: Focus Turnier 1.5 EcoBlue Start-Stopp-System Aut. TITANIUM

VIN: WF0PXXGCHPPD74229



Vehicle details

Manufacturer / Type / Model / Equipment

Ford Focus Turnier 1.5 EcoBlue Start-Stopp-System Aut. TITANIUM

Vehicle Identification number WF0PXXGCHPPD74229

Mileage (Read) 121,375 km

First registration 6 Apr 2023

Number of holders 1

Power / Engine displacement 85 kw / 1,499 ccm

Fuel type / Cylinder Diesel / 4

Gearbox / Number of gears Automatic / 8

Type of drive Front drive

Type of vehicle Station wagon

Colour / colour code Frozen White

Doors / Seats 5 / 5

Upholstery type Cloth

Colour of upholstery Black-Anthracite

readiness to drive Roadworthy



Vehicle details

Maintenance booklet / proof	Non-existent	Next maintenance in	60 %
Key is / should be	1 / 2	FZG documents	ZB#2 (B) was available (copy), ZB#1 (S) was not available.
		Letter No.	GT897202
Previous damage / Accident	None detectable	Repainting	None detectable
Inspection conditions	sufficient	Lifting equipment / pit	No
Test drive	Not performed	Engine function test	Performed
readiness to drive	Roadworthy		
Manufacturer key number/ type code number	8566 / BYE 00002		
Emission standard	EURO6;WLTP;AP;PI/CI; M, N1 I	fine dust sticker	
Permitted total weight	2,035 kg	Empty weight	

Tyres

Mounted tyres

#	Tyre size	Type of tyre	Manufacturer	Tread depth
1)	205/60 R16 96H	Winter tyres on Steel rim with wheel cover	Dunlop	5mm / 5mm
2)	205/60 R16 96H	Winter tyres on Steel rim with wheel cover	Dunlop	4mm / 4mm

Additional tyres

#	Tyre size	Type of tyre	Manufacturer	Tread depth
1)	205/60 R16 96W	Summer tyres on Steel	Semperit	5mm / 5mm
2)	205/60 R16 96W	Summer tyres on Steel	Semperit	5mm / 5mm

Replacement

Typ	Tyre size	Type of tyre	Manufacturer	Tread depth
N	125/70 R16 96M	Summer tyres on Steel	Hankook	3 mm

Legend: Tread depth information for the left tire is listed first, for the right tire it is listed second on the axle in the direction of travel.

TÜV SÜD Auto Partner GmbH
Wiesenring 2
04159 Leipzig

Inspection location
Hartmann Fleet Professionals GmbH
Leerenstraße 25
29683 Bad Fallingbommel



Equipment



Standard equipment

- Airbag: Passenger airbag deactivation
- Exterior mirrors painted in body color, electrically adjustable, heated and foldable (with integrated turn signals)
- Tires: 6.5 J x 16 design wheels (4) with 205/60 R16 tires (in 10-spoke design, in black-silver)
- Roof rails, aluminum
- Diesel particulate filter (DPF)
- Electronic Shifter
- Driver information system with on-board computer, color (10.7 cm screen diagonal)
- Electric front and rear windows (with all-around closing function)
- FordPass Connect including live traffic information (Additionally for PowerShift automatic transmission: Ford Mobile Remote remote start function)
- Cruise control
- Transmission: 8-speed automatic transmission
- Back window, heater
- Interior lighting with LED technology (front and rear and map reading lights at the front)
- Isofix mounting (including top tether anchor points on the outer seats of the 2nd row)
- Air conditioning with automatic temperature control (separately adjustable for driver and passenger side (2-zone automatic climate control))
- Headrests: 2 front and 3 rear, height adjustable
- LED taillights
- Steering wheel: 3-spoke design steering wheel (in Sensico leather look)
- Steering column, adjustable (adjustable in height and reach)
- Front center console "Premium" (sliding armrest - cup holders - storage compartments - 12-volt and USB connection)
- Emergency call assistant
- Front and rear parking pilot system
- Upholstery: Cloth
- Post-Collision Assist (In the event of a severe collision, which would also deploy the airbag and in which the driver might be incapacitated, this system initiates the braking process. This reduces the risk of colliding with further obstacles and road users after the initial collision. The driver can intervene and operate the accelerator or brake pedal manually throughout the entire process.)
- Tire repair kit (for use at a maximum speed of 80 km/h)
- Tire Pressure Monitoring System (TPMS)
- Headlight dipped beam (with switch-off delay)
- Selective driving mode switch (including 3 selectable driving modes: Normal, Sport and Eco)
- Seats: Passenger seat height-adjustable, manually (with adjustable lumbar support)
- Seats: Rear seat backrest (foldable, 60:40 split)
- Start-stop system
- Carpet floor mats in the front
- Anti-lock braking system (ABS) with electronic brake force distribution (EBD)
- Attachment points behind the second row of seats for mounting the safety partition net
- Hill start assist
- Fabric headliner
- Roof spoiler painted in car color
- Tachometer
- Electronic Stability Program (ESP) (with Emergency Brake Assist (EBA) and Traction Control System (TCS))
- Lane keeping assist including lane keeping assist
- Electric parking brake with auto-hold function
- Ford Power Start function (keyless start)
- Luggage compartment cover
- Luggage compartment lighting
- Speed limiter (Intelligent speed limiter with speed limit display)
- Illuminated glove compartment
- Rear window wiper
- Interior mirror, automatically dimming
- Intelligent safety system (front airbag for driver and front passenger - front and rear head and shoulder airbags - side airbag for driver and front passenger - seat belt tensioners and force limiters in the front and on the outer seats of the 2nd row - 3-point seat belts on all seats, height-adjustable in the front - safety pedal assembly)
- Paint finish: Solid
- LED headlights (LED low beam - LED high beam - LED daytime running lights incl. integrated LED turn signals at the front - LED cornering lights, static, incl. integrated LED fog light function and maneuvering light)
- Make-up mirrors in driver and passenger sun visors
- MyKey key system (individually programmable second key)
- Navigation: Ford SYNC 4 including Ford navigation system with AppLink, 13.2" touchscreen and DAB/DAB+ (6 speakers - Amazon Alexa built-in voice assistant - Android Auto and Apple CarPlay - Steering wheel controls - Digital user manual - Bluetooth hands-free calling and audio streaming - USB ports - Voice control for audio and phone - Ford Power-Up software updates - Intelligent route suggestions - Customizable user profiles - Radio player - Audible and visual route guidance, dynamic and cloud-based navigation with advanced traffic information system, lane guidance and road map for Europe)
- Pre-Collision Assist (Forward Alert system with pedestrian and bicycle detection)
- Windscreen wipers with rain sensor (sensitivity adjustable)
- Headlight assistant with day/night sensor
- Electro-mechanical speed-dependent power steering (EPAS - Electric Power Assisted Steering)
- Seats: Driver's seat height adjustable (with manually adjustable lumbar support)
- Seats: Front sports seats with enhanced lateral support



- Lashing eyes in the luggage compartment
- Electronic immobilizer
- Central locking with remote control and remote luggage compartment release

- 12-volt power outlet in the luggage compartment
- Variable radiator air intake
- Warning system for unfastened seat belts for the 1st and 2nd rows of seats

Extra equipment

- Detachable towbar (including ESP trailer stabilization)
- eCall
- Paint finish: Frozen White
- Safety partition net for luggage compartment
- Seats: Front seats can be heated individually and variably.
- Side windows from the 2nd row of seats and rear window, dark tinted.
- Wheels: Emergency spare wheel (permitted for use up to max. 80 km/h - steel wheel 3.5 J x 16 with 125/70 R16 tire)

- Package: Easy Parking (Active Parking Assist with parking and exiting function (in conjunction with 8-speed automatic transmission including semi-automated vehicle guidance) - Door edge protection - Rearview camera with "Split View" technology)
- Seats: Ford ergonomic seat (driver and front passenger seat, 18-way adjustable: - position, height and tilt of the backrest and seat cushion manually adjustable (in conjunction with EcoBoost Hybrid - front passenger seat, 2-way adjustable) - thigh support, manually extendable - lumbar support, 4-way electrically adjustable)

Brief expert findings

Documents submitted	At the time of the inspection, the vehicle registration certificate Part 2 (title) was available, but the vehicle registration certificate Part 1 (document) was not. (Copy)
VIN comparison	The vehicle identification number (VIN) was read from the vehicle and its conformity with the submitted documents was confirmed by the undersigned during the inspection.
Inspection	The inspection conditions were sufficient for the assessment of the vehicle. No lifting equipment or pit was available for inspecting the vehicle. Therefore, inspection of the vehicle's underside was only possible to a limited extent.
Test drive	No test drive/shunting maneuver was carried out during the inspection of the vehicle.
Engine function test	An engine test run was performed.
readiness to drive	The vehicle was roadworthy at the time of inspection.

Value reducing factors

No.	Component group	Description
1	Wing mirror - left side	Cap - Scratch(es) - Smart repair
2	Trim / covers	Boot lining - Scratch(es) - Loss in value
3	Front bumper	Spoiler - Scratch(es) - Replace
4	Trim / covers	Door trim - front right side - Scratch(es) - Smart repair
5	Side panel - rear right side	Sill - Dent / paintcoat damage - Smart repair
6	Side panel - rear left side	Sill - Dent / paintcoat damage - Smart repair
7	Roof	Roof rail - right side - dent(s) - Smart repair
8	Side panel - rear right side	Side panel - dent(s) - Smart repair
9	Boot lid / rear door	Boot lid - dent(s) - Smart repair
10	Body	Body - Glued / labelled - De-glue / neutralise
11	Trim / covers	Boot lid - interior trim - Scratch(es) - Replace
12	Trim / covers	Door trim - rear right side - Scratch(es) - Replace
13	Door - rear left side	Door - Scratch(es) - Paint
14	Door - front left side	Door - Scratch(es) - Paint
15	Side panel - rear left side	Side panel - Dent / paintcoat damage - Repair and paint
16	Rear bumper	Rear bumper - Scratch(es) - Paint
17	Front bumper	Front bumper - Dent / paintcoat damage - Repair and paint



Wear and tear

No.	Component group	Description
1	Wheel / tyres	Tyre - right (Über 4mm) - No deduction
2	Roof	Roof rail - left side - dent(s) - No deduction
3	Vehicle glazing	Rear window - Scratch(es) - No deduction
4	Vehicle glazing	Windscreen - Stone chips - No deduction
5	Roof	Roof - Stone chips - No deduction
6	Bonnet	Bonnet - Stone chips - No deduction
7	Door - rear right side	Door - Scratch(es) - No deduction
8	Wheel / tyres	Wheel cover - rear right side - Scratch(es) - No deduction

The vehicle shows signs of wear and tear commensurate with its age and use.

Missing parts

Description

Rear of vehicle - Key trailer hitch

Documents - Service book

Equipment - Vehicle key

Order/Scope of Order

An order was placed to prepare a sales report for the described vehicle. This report includes the following:

- Description of key vehicle information
- Documentation of equipment features
(*Delivery by third-party service providers*)
- Documentation of damage, defects, missing parts
- Documentation of prior damage, unrepaired prior damage, repainting
- A brief visual or functional inspection of the equipment details, if possible.
(*Functional testing of driver assistance systems is not included in the scope of services!*)
- a photographic documentation of the vehicle

Basis for the order

This product is based on the guidelines for vehicle returns and valuations published by Alphabet Fleet GmbH. The expert makes the specific findings in each individual case objectively, within the framework of the prescribed standards, based on their own expertise.

The vehicle inspection takes place in a fully assembled, unassembled state.

Damage or defects that can only be detected during disassembly/diagnostic work or through further investigation remain within the realm of prognostic risk. An increased risk exists due to concealed defects caused by fraudulent misrepresentation and which were not identifiable by the expert.

Damage or defects resulting from normal use or wear and tear of the vehicle will be accepted in accordance with the applicable standard.

There was no explicit identification or monetary consideration of the expected features within the product.

Features which, in their nature and extent, slightly exceed normal use but do not constitute unacceptable damage, will be documented and indicated as signs of wear, if applicable.

Damage or defects that, according to the applicable standard, can no longer be attributed to normal use or wear and tear are listed under "Value Reducing Factors" in the product description.

Depending on the product specification, a monetary ID can be provided. If this takes place, the costs can be 100% d or pro rata depending on the vehicle's age and mileage.



Previous damages

No apparent prior damage that had been repaired could be found on the vehicle.

Comments

-Der montierte Winterradsatz ist kein Bestandteil des Auslieferungsumfangs.



Figure 1: Diagonal front (left)



Figure 2: Diagonal front (right)



Figure 3: Diagonal rear (left)



Figure 4: Diagonal rear (right)



Figure 5: Interior - front



Figure 6: Interior - rear



Figure 7: Instrument cluster



Figure 8: Instrument panel



Figure 9: Interior 360° view



Figure 10: Cargo area



Figure 11: VIN



Figure 12: Mounted tyres



Figure 13: Documents



Figure 14: Additional tyres



Figure 15: Additional tyres



Figure 16: Navigation



Figure 17: Misc.



Figure 18: Misc.



Figure 19: Misc.



Figure 20: Misc.



Figure 21: Misc.

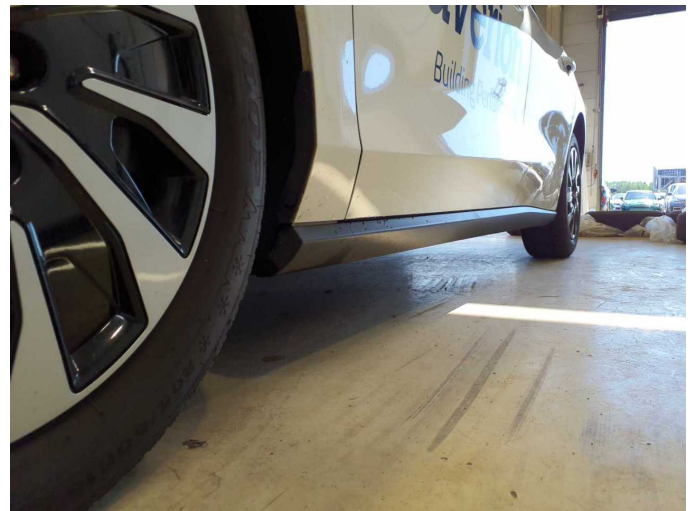


Figure 22: Misc.



Figure 23: Misc.

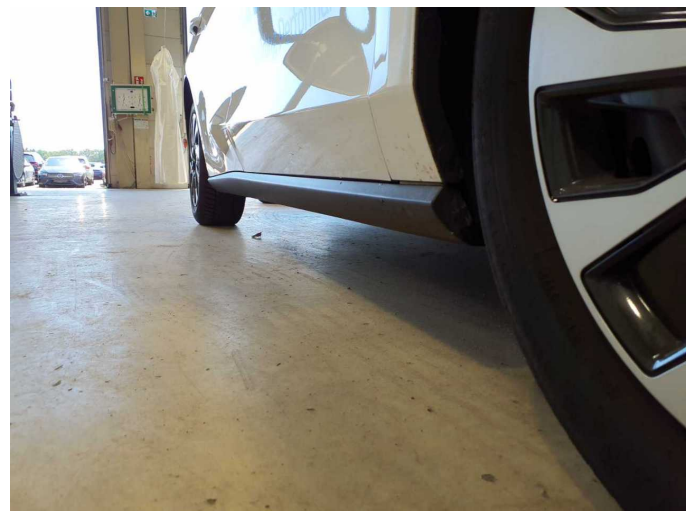


Figure 24: Misc.



Figure 25: Misc.



Figure 26: Misc.

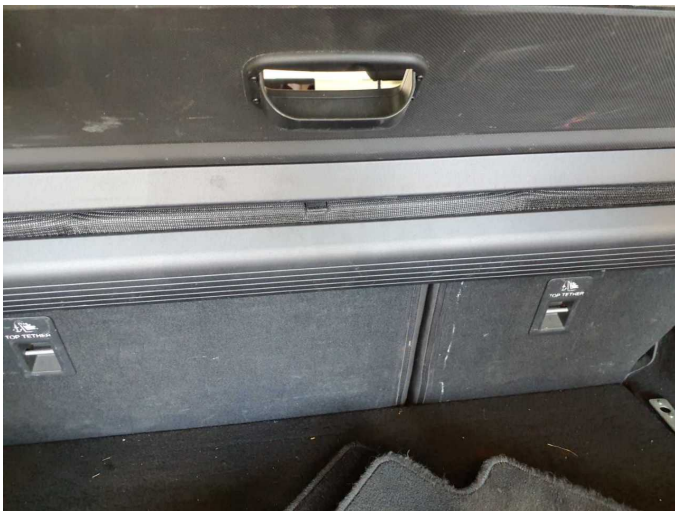


Figure 27: Misc.



Figure 28: Misc.



Damage 1: Wing mirror - left side: Cap - Scratch(es) - Smart repair



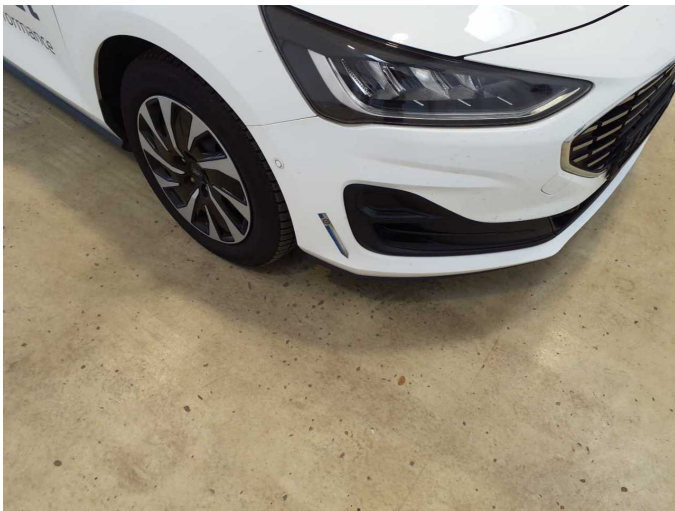
Damage 1: Wing mirror - left side: Cap - Scratch(es) - Smart repair



Damage 2: Trim / covers: Boot lining - Scratch(es) - Loss in value



Damage 2: Trim / covers: Boot lining - Scratch(es) - Loss in value



Damage 3: Front bumper: Spoiler - Scratch(es) - Replace



Damage 3: Front bumper: Spoiler - Scratch(es) - Replace



Damage 4: Trim / covers: Door trim - front right side - Scratch(es) - Smart repair



Damage 4: Trim / covers: Door trim - front right side - Scratch(es) - Smart repair



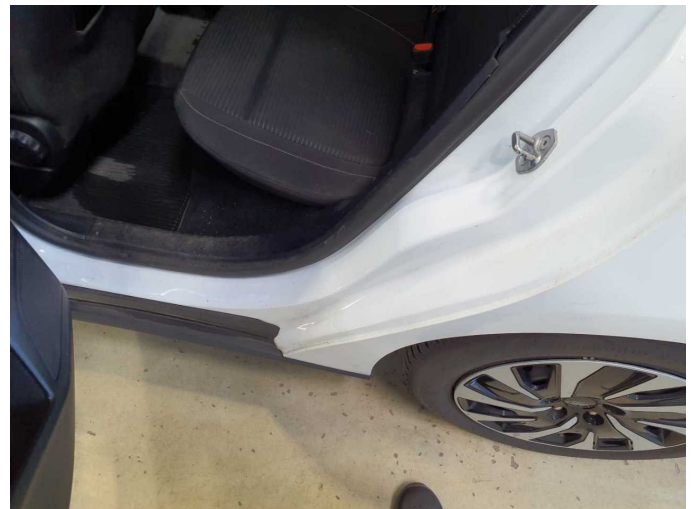
Damage 5: Side panel - rear right side: Sill - Dent / paintcoat damage - Smart repair



Damage 5: Side panel - rear right side: Sill - Dent / paintcoat damage - Smart repair



Damage 5: Side panel - rear right side: Sill - Dent / paintcoat damage - Smart repair



Damage 6: Side panel - rear left side: Sill - Dent / paintcoat damage - Smart repair



Damage 6: Side panel - rear left side: Sill - Dent / paintcoat damage - Smart repair



Damage 6: Side panel - rear left side: Sill - Dent / paintcoat damage - Smart repair



Damage 7: Roof: Roof rail - right side - dent(s) - Smart repair



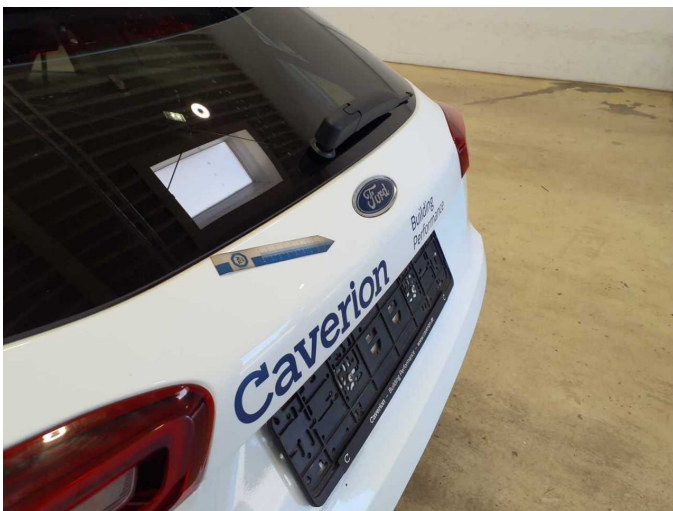
Damage 7: Roof: Roof rail - right side - dent(s) - Smart repair



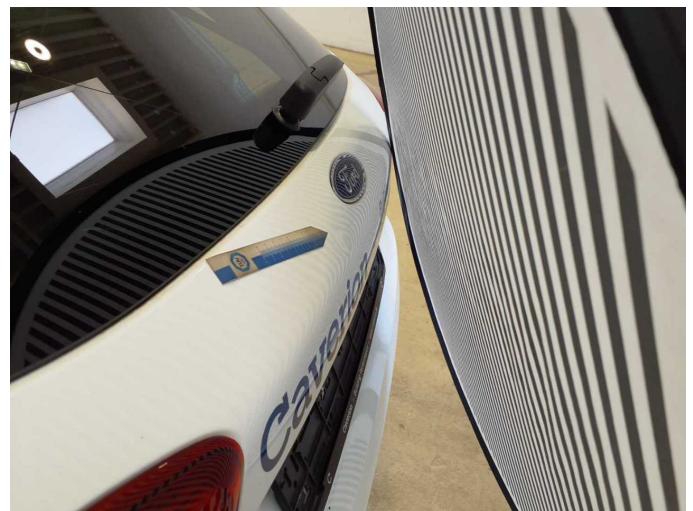
Damage 8: Side panel - rear right side: Side panel - dent(s) - Smart repair



Damage 8: Side panel - rear right side: Side panel - dent(s) - Smart repair



Damage 9: Boot lid / rear door: Boot lid - dent(s) - Smart repair



Damage 9: Boot lid / rear door: Boot lid - dent(s) - Smart repair



Damage 10: Body: Body - Glued / labelled - De-glug / neutralise



Damage 10: Body: Body - Glued / labelled - De-glug / neutralise



Damage 11: Trim / covers: Boot lid - interior trim - Scratch(es) - Replace



Damage 11: Trim / covers: Boot lid - interior trim - Scratch(es) - Replace



Damage 11: Trim / covers: Boot lid - interior trim - Scratch(es) - Replace



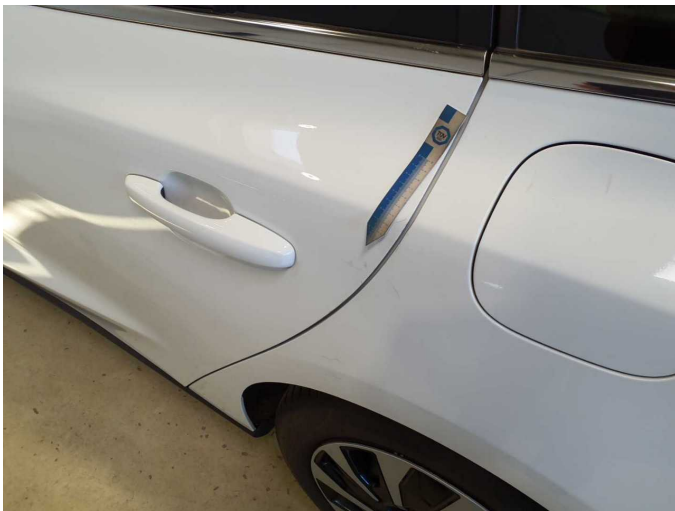
Damage 12: Trim / covers: Door trim - rear right side - Scratch(es) - Replace



Damage 12: Trim / covers: Door trim - rear right side - Scratch(es) - Replace



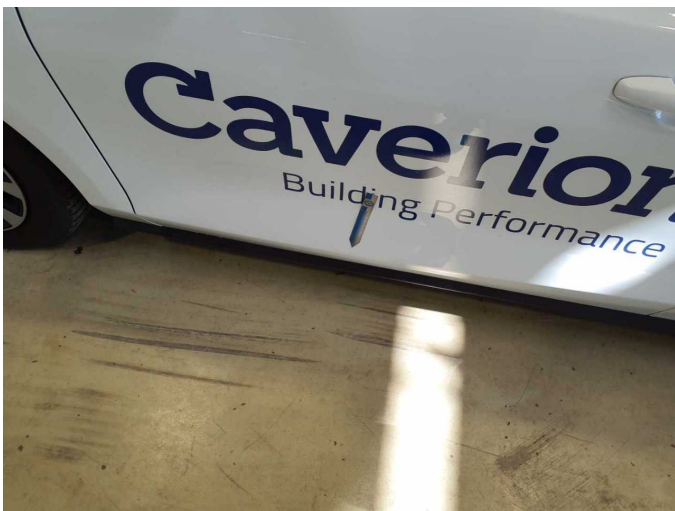
Damage 12: Trim / covers: Door trim - rear right side - Scratch(es) - Replace



Damage 13: Door - rear left side: Door - Scratch(es) - Paint



Damage 13: Door - rear left side: Door - Scratch(es) - Paint



Damage 14: Door - front left side: Door - Scratch(es) - Paint



Damage 14: Door - front left side: Door - Scratch(es) - Paint



Damage 15: Side panel - rear left side: Side panel - Dent / paintcoat damage - Repair and paint



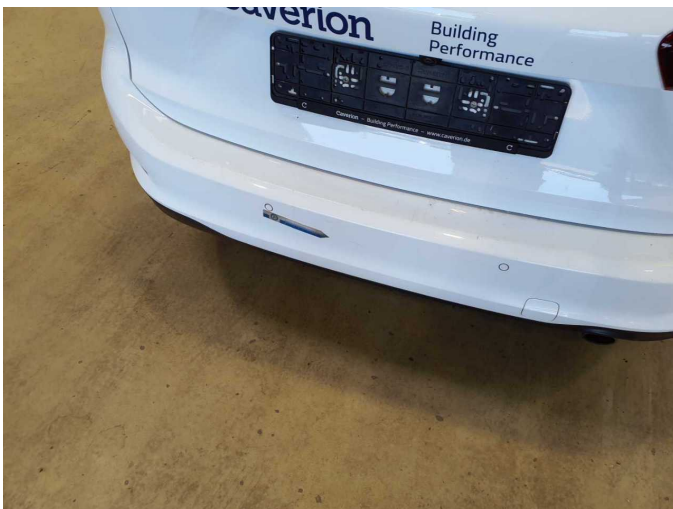
Damage 15: Side panel - rear left side: Side panel - Dent / paintcoat damage - Repair and paint



Damage 15: Side panel - rear left side: Side panel - Dent / paintcoat damage - Repair and paint



Damage 15: Side panel - rear left side: Side panel - Dent / paintcoat damage - Repair and paint



Damage 16: Rear bumper: Rear bumper - Scratch(es) - Paint



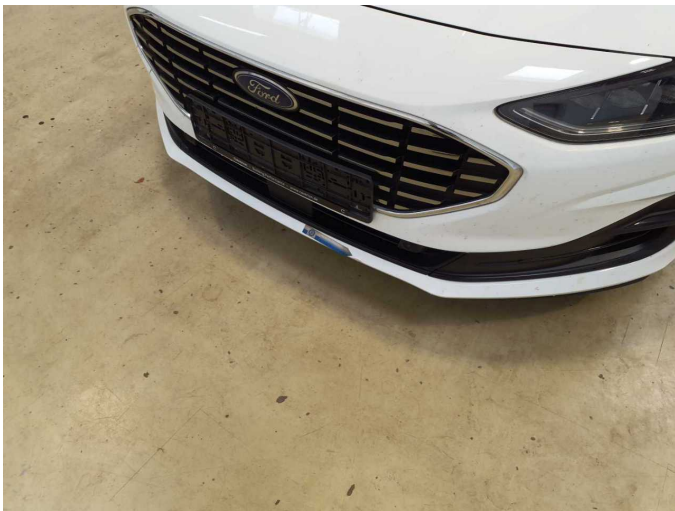
Damage 16: Rear bumper: Rear bumper - Scratch(es) - Paint



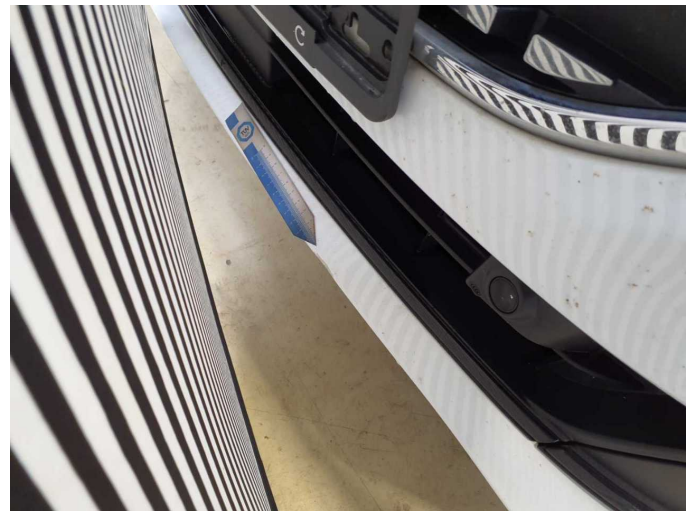
Damage 16: Rear bumper: Rear bumper - Scratch(es) - Paint



Damage 16: Rear bumper: Rear bumper - Scratch(es) - Paint



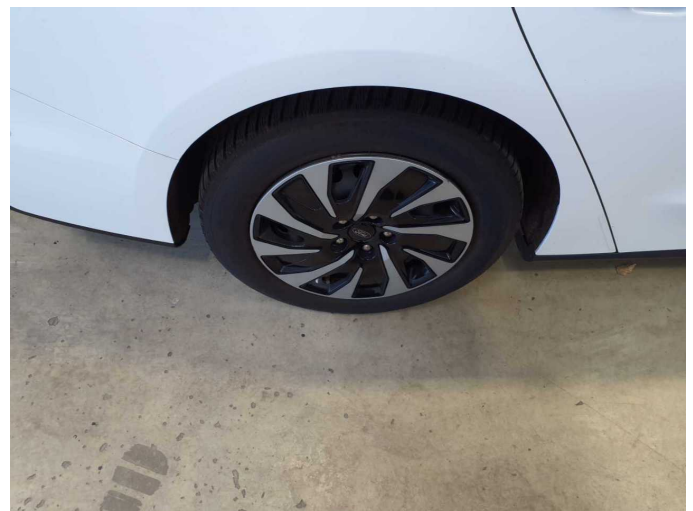
Damage 17: Front bumper: Front bumper - Dent / paintcoat damage - Repair and paint



Damage 17: Front bumper: Front bumper - Dent / paintcoat damage - Repair and paint



Damage 17: Front bumper: Front bumper - Dent / paintcoat damage - Repair and paint



Wear and tear 8: Wheel / tyres: Wheel cover - rear right side - Scratch(es) - No deduction



Wear and tear 8: Wheel / tyres: Wheel cover - rear right side -
Scratch(es) - No deduction