

Expertise

Protocol number: 46227536
Order No. / Reference: 26453742
Inspection date: 29 Jun 2026

Manufacturer: Skoda

Model: Superb Combi 2.0 TDI Ambition

VIN: TMBJH9NPXP7034312



Vehicle details

Manufacturer / Type / Model / Equipment

Skoda Superb Combi 2.0 TDI Ambition

Vehicle Identification number TMBJH9NPXP7034312

Mileage (Read) 80,296 km

First registration 15 Mar 2023

Number of holders 1

Next periodical technical inspection 03/2028
(Report on hand)

Power / Engine displacement 110 kw / 1,968 ccm

Fuel type / Cylinder Diesel / 4

Gearbox / Number of gears Manual / 6

Type of drive Front drive

Type of vehicle Station wagon

Colour / colour code Graphit-Grau Metallic

Doors / Seats 5 / 5

Upholstery type Cloth

Colour of upholstery Black



Vehicle details

Maintenance booklet / proof	digital proof / complete	Next maintenance in	7,100 km
Last service on / at	01/2026 at 74,496 km		
Key is / should be	2 / 2	FZG documents	ZB#2 (B) was available (copy), ZB#1 (S) was not available.
		Letter No.	GQ550001
Previous damage / Accident	Detectable	Repainting	None detectable
Inspection conditions	sufficient	Lifting equipment / pit	No
Test drive	Not performed	Engine function test	Performed
Manufacturer key number/ type code number	8004 / APL 02075		
Emission standard	EURO6;WLTP;AP;PI/CI; M, N1 I	fine dust sticker	
Permitted total weight	2,176 kg	Empty weight	

Tyres

Mounted tyres

#	Tyre size	Type of tyre	Manufacturer	Tread depth
1)	215/55 R17 94V	Summer tyres on Light alloy	Michelin	5mm / 5mm
2)	215/55 R17 94V	Summer tires (with run-flat tires) on Light alloy	Continental	6mm / 6mm

Additional tyres

#	Tyre size	Type of tyre	Manufacturer	Tread depth
1)	215/60 R16 99H	Winter tyres on Light alloy	Pirelli	6mm / 6mm
2)	215/60 R16 95H	Winter tyres on Light alloy	Continental	8mm / 8mm

Replacement

Typ	Tyre size	Type of tyre	Manufacturer	Tread depth
	Tirefit	Expiration date 11/2026		

Legend: Tread depth information for the left tire is listed first, for the right tire it is listed second on the axle in the direction of travel.

TÜV SÜD Auto Partner GmbH
Gutenbergstraße 13
70771 Leinfelden-Echterdingen

Inspection location
ARS Altmann AG Automobillogistik
Römerstraße 3
64560 Riedstadt



Equipment



Standard equipment

- Closed storage compartments behind the wheel arches in the trunk, including cargo elements
- Airbag, driver and switchable passenger airbag
- Airbag, driver's knee airbag
- Airbag, head airbags
- Airbag, front side airbags
- Anti-lock braking system (ABS)
- Traction control (ASR)
- Electrically adjustable and heated exterior mirrors
- Exterior mirrors and door handles in body color
- Electrically folding exterior mirrors (with boarding lights - interior and exterior mirrors with automatic dimming)
- Hydraulic brake assist (HBA)
- Roof rails, black
- Diesel particulate filter and SCR catalyst
- Tachometer
- Easy Start (start-stop button instead of ignition lock)
- Electronic transverse differential lock (XDS+)
- Driving light assistant and rain sensor (tunnel light, coming and leaving home function)
- Front radar assist including city emergency braking function (The front radar assist warns of impending collisions and initiates braking to reduce the force of an unavoidable impact. The front radar assist continuously monitors the distance to the vehicle ahead using a radar sensor integrated into the radiator grille.)
- ISOFIX preparation on the outer rear seats, including top tether
- Boot cover, roll-up and removable, semi-automatic
- LED low beam
- Steering wheel: 2-spoke leather steering wheel with multifunction buttons (including gearshift and handbrake levers in leather)
- Front center armrest with storage compartment
- Engine drag torque control (MSR)
- LED fog lights with integrated cornering lights
- Upholstery: Cloth
- Radio accessories: Digital radio reception DAB+
- Radio accessories: In-car communication
- Radio accessories: Voice control
- Radio accessories: Wireless SmartLink for Apple CarPlay
- Tire pressure monitoring
- Wheels: 16" Orion alloy wheels (6.5J x 16" ET 41 with 215/60 R16 tires)
- Superb safety belts (Height-adjustable three-point front seat belts with belt tensioners - Three three-point rear seat belts - Belt fastening indicator for all seats)
- Storage compartments (ticket holder on the windshield, 4 roof grab handles, rear with coat hooks, coat hooks on the B-pillar, holder for the warning vests in the front doors, glasses compartment in the headliner, storage compartments in the door panels (front and rear) with 1.5l bottle holders, cup holder in the front center console with easy-open bottle opening, storage pockets on the front seat backrests, storage compartments behind the wheel arches in the trunk including cargo elements, illuminated trunk)
- Illuminated glove compartment
- Hill start assist
- Grey headliner
- Decorative inlay silver brushed
- Digital instrument cluster (Virtual Cockpit) 10.2"
- Third brake light
- Electronic parking brake including auto-hold function
- Electronic Stability Control (ESC)
- Electric windows front and rear, including anti-pinch protection and child safety lock
- Cruise control system (cruise control) including speed limiter
- Transmission: 6-speed manual transmission
- Tinted windows
- Heated rear window
- Rear window wiper including windshield washer system
- Child safety lock for rear doors & windows, electric
- Air Care Climatronic air conditioning (2-zone)
- Front and rear headrests are height-adjustable.
- LED taillights
- Steering wheel: height and reach adjustable
- Reading lights at the front and rear of the headliner
- Rear center armrest with cup holders and pass-through option
- Multi-collision brake
- Rear parking sensors
- Radio: Bolero infotainment system (capacitive 8" touch display in glass design - Wireless Smartlink (Apple CarPlay, Android Auto))
- Radio accessories: USB ports at the front (Type-C) and USB charging port (Type-A) in the center armrest
- Tire mobility kit (tire repair spray incl. compressor)
- Heated windshield washer nozzles
- Electromechanical power steering
- Seats: Adjustable lumbar support in the front seats
- Seats: Height-adjustable front seats
- Seats: Rear seat backrest split 60:40, foldable
- Sun visor on driver and passenger side with illuminated make-up mirror
- Start/stop system including brake energy recuperation
- 12V socket in the trunk
- 12V socket in the center console, front and rear
- Telephone: Convenient hands-free phone system with Bluetooth (without connection to an external antenna)



- SKODA Care Connect (SOS emergency call function (Emergency Call incl. automatic activation in the event of an accident with airbag deployment), Mobility service (connection for rapid assistance in case of breakdown), Information service (connection to the hotline for all questions relating to vehicle functions), Free remote vehicle access for 1 year (Remote Access) with access to vehicle data and functions via smartphone, e.g. parking position, activating hazard warning lights, current fuel level)
- Lashing eyes in the trunk
- Central locking with remote control

- Chrome-plated elements (on air vents, light switches, music or navigation systems, air conditioning)
- Immobiliser

Extra equipment

- Swiveling trailer hitch including trailer stabilization
- Luggage net partition
- Paint finish: Metallic
- Package: Business Amundsen (manual transmission) (Amundsen navigation system - voice control - Wi-Fi hotspot - Wireless Smartlink for Apple CarPlay - 8" capacitive touchscreen in glass design - Phonebox - Traveller assistance system (traffic sign recognition, predictive lane keeping assist pACC, adaptive lane keeping assist, capacitive steering wheel with hands-off detection) - 230 V socket and 3 USB ports, tablet holder - Sunset - Infotainment Online (3-year subscription))

- Electric tailgate opening (including boot cover and multifunction storage compartment)
- Remote release of the rear seat backrests in the trunk
- Package: Safety (Proactive occupant protection - rear side airbags - Isofix anchorage for passenger seat)
- Front and rear parking sensors
- Wheels: 17" Drakon alloy wheels (6.5J x 17" ET 41 with 215/55 R17 tires - anthracite polished)
- Reversing camera with washer nozzle
- Seats: Heated front seats
- Auxiliary heater with radio remote control

Brief expert findings

Documents submitted	At the time of the inspection, the vehicle registration certificate Part 2 (title) was available, but the vehicle registration certificate Part 1 (document) was not. (Copy)
VIN comparison	The vehicle identification number (VIN) was read from the vehicle and its conformity with the submitted documents was confirmed by the undersigned during the inspection.
Inspection	The inspection conditions were sufficient for the assessment of the vehicle. No lifting equipment or pit was available for inspecting the vehicle. Therefore, inspection of the vehicle's underside was only possible to a limited extent.
Test drive	No test drive/shunting maneuver was carried out during the inspection of the vehicle.
Engine function test	An engine test run was performed.

Value reducing factors

No.	Component group	Description
1	Boot lid / rear door	Boot lid - dent(s) - Smart repair
2	Door - rear right side	Door - dent(s) - Smooth repair work
3	Side panel - rear left side	Side panel - Dent / paintcoat damage - Smart repair
4	Side panel - rear right side	Side panel - Dent / paintcoat damage - Smart repair
5	Door - front left side	Door - Dent / paintcoat damage - Smart repair
6	Door - rear left side	Door - Scratch(es) - Smart repair
7	Front bumper	Front bumper - Scratch(es) - Smart repair
8	Rear bumper	Rear bumper (Lack ist rissig) - Paint defect - Paint



Wear and tear

No.	Component group	Description
1	Bonnet	Bonnet - dent(s) - No deduction

The vehicle shows signs of wear and tear commensurate with its age and use.

Missing parts

Description

Equipment - Umbrella

Previous damages

No.	Previous damage	Extent of damage (Net)
1	Rear, Provided by user / customer, from 11 Feb 2026	773,62 €

Order/Scope of Order

An order was placed to prepare a sales report for the described vehicle. This report includes the following:

- Description of key vehicle information
- Documentation of equipment features
(Delivery by third-party service providers)
- Documentation of damage, defects, missing parts
- Documentation of prior damage, unrepaired prior damage, repainting
- A brief visual or functional inspection of the equipment details, if possible.
(Functional testing of driver assistance systems is not included in the scope of services!)
- a photographic documentation of the vehicle

Basis for the order

This product is based on the guidelines for vehicle returns and valuations published by Alphabet Fleet GmbH. The expert makes the specific findings in each individual case objectively, within the framework of the prescribed standards, based on their own expertise.

The vehicle inspection takes place in a fully assembled, unassembled state.

Damage or defects that can only be detected during disassembly/diagnostic work or through further investigation remain within the realm of prognostic risk. An increased risk exists due to concealed defects caused by fraudulent misrepresentation and which were not identifiable by the expert.

Damage or defects resulting from normal use or wear and tear of the vehicle will be accepted in accordance with the applicable standard.

There was no explicit identification or monetary consideration of the expected features within the product.

Features which, in their nature and extent, slightly exceed normal use but do not constitute unacceptable damage, will be documented and indicated as signs of wear, if applicable.

Damage or defects that, according to the applicable standard, can no longer be attributed to normal use or wear and tear are listed under "Value Reducing Factors" in the product description.

Depending on the product specification, a monetary ID can be provided. If this takes place, the costs can be 100% d or pro rata depending on the vehicle's age and mileage.

Previous damages

According to available information previous damages were repaired at the vehicle. Traces of repairs, which allow conclusions about the area of repair, were not recognizable during the inspection.



Comments

Die beiliegenden Winterräder sind nicht Bestandteil der Ausstattung.



Figure 1: Diagonal front (left)



Figure 2: Diagonal front (right)



Figure 3: Diagonal rear (left)



Figure 4: Diagonal rear (right)



Figure 5: Interior - front

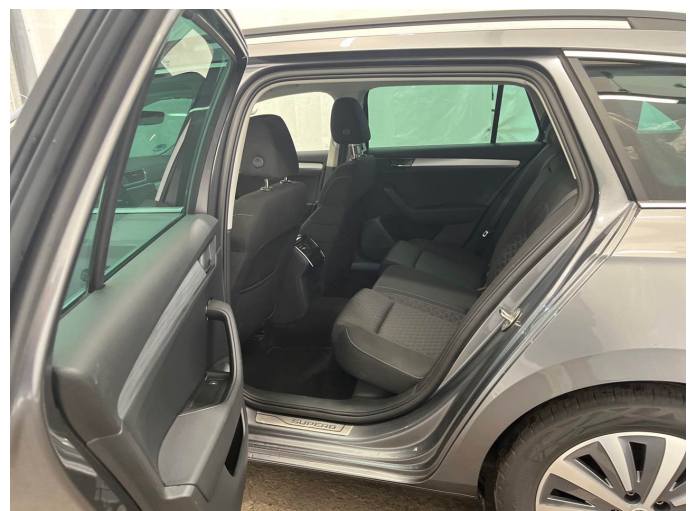


Figure 6: Interior - rear



Figure 7: Instrument cluster



Figure 8: Instrument panel

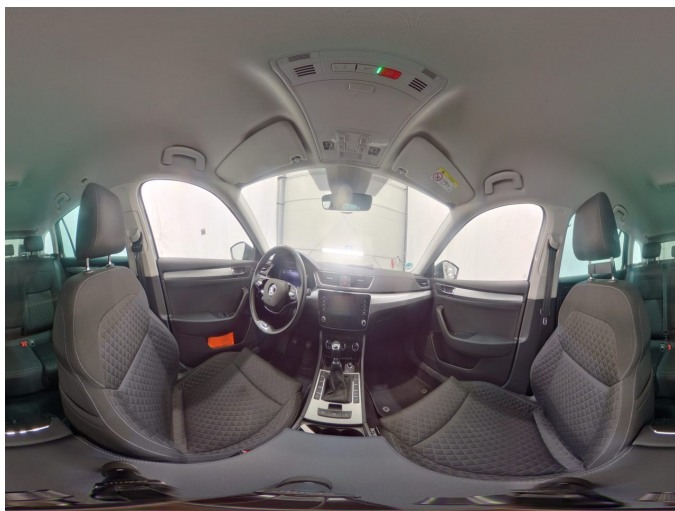


Figure 9: Interior 360° view



Figure 10: Cargo area

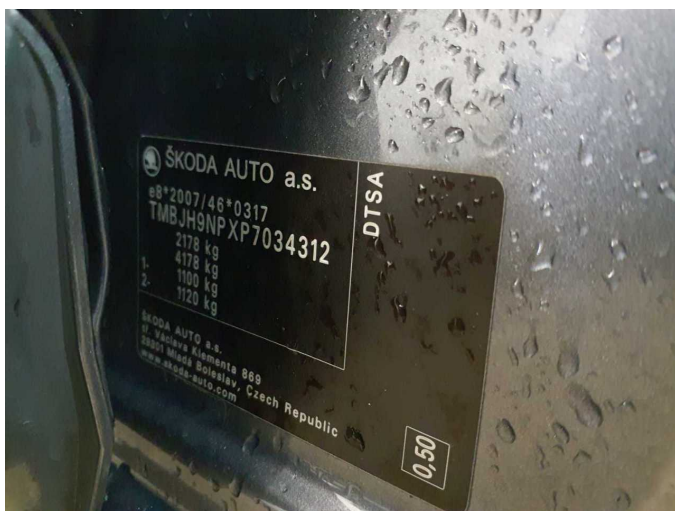


Figure 11: VIN



Figure 12: Mounted tyres



Figure 13: Documents



Figure 14: Documents



Figure 15: Documents



Figure 16: Additional tyres



Figure 17: Navigation



Figure 18: Misc.



Figure 19: Misc.



Figure 20: Misc.



Figure 21: Misc.



Figure 22: Misc.

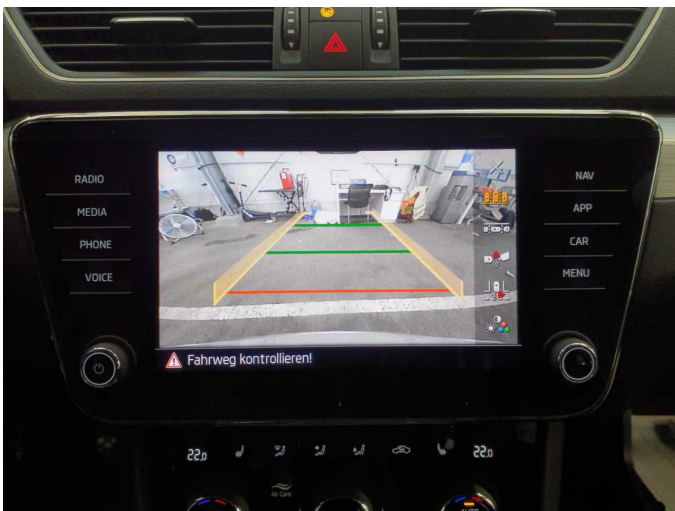


Figure 23: Misc.



Figure 24: Misc.



Figure 25: Misc.



Figure 26: Misc.



Figure 27: Misc.

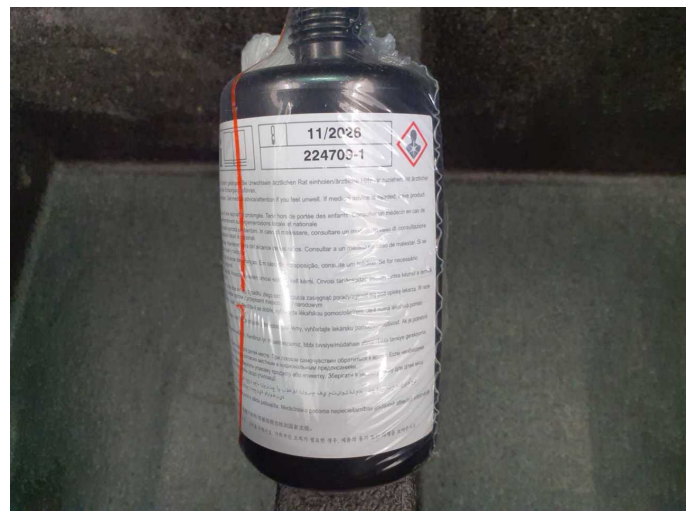


Figure 28: Misc.



Figure 29: Misc.



Figure 30: Misc.



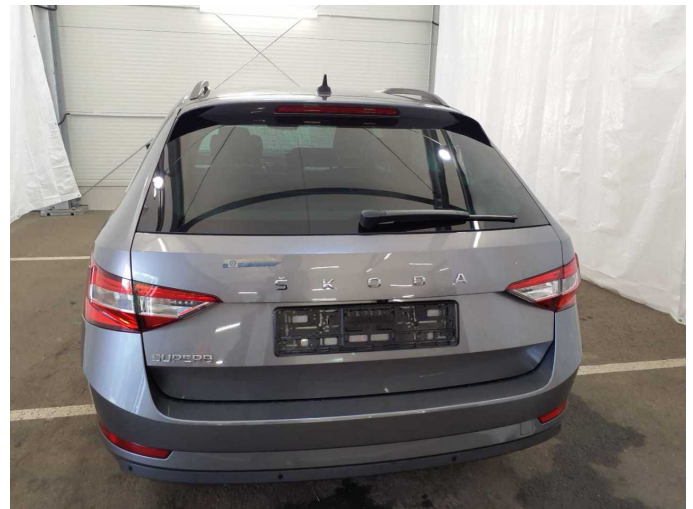
Figure 31: Misc.



Figure 32: Misc.



Figure 33: Misc.



Damage 1: Boot lid / rear door: Boot lid - dent(s) - Smart repair



Damage 1: Boot lid / rear door: Boot lid - dent(s) - Smart repair



Damage 2: Door - rear right side: Door - dent(s) - Smooth repair work



Damage 2: Door - rear right side: Door - dent(s) - Smooth repair work



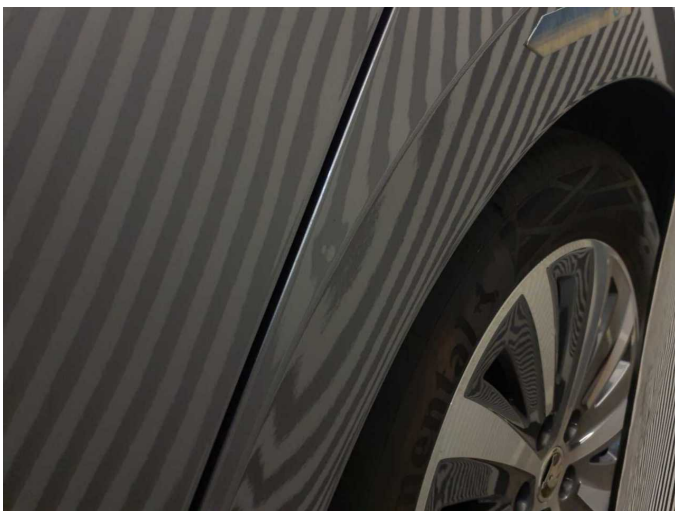
Damage 2: Door - rear right side: Door - dent(s) - Smooth repair work



Damage 3: Side panel - rear left side: Side panel - Dent / paintcoat damage - Smart repair



Damage 3: Side panel - rear left side: Side panel - Dent / paintcoat damage - Smart repair



Damage 3: Side panel - rear left side: Side panel - Dent / paintcoat damage - Smart repair



Damage 4: Side panel - rear right side: Side panel - Dent / paintcoat damage - Smart repair



Damage 4: Side panel - rear right side: Side panel - Dent / paintcoat damage - Smart repair



Damage 4: Side panel - rear right side: Side panel - Dent / paintcoat damage - Smart repair



Damage 5: Door - front left side: Door - Dent / paintcoat damage - Smart repair



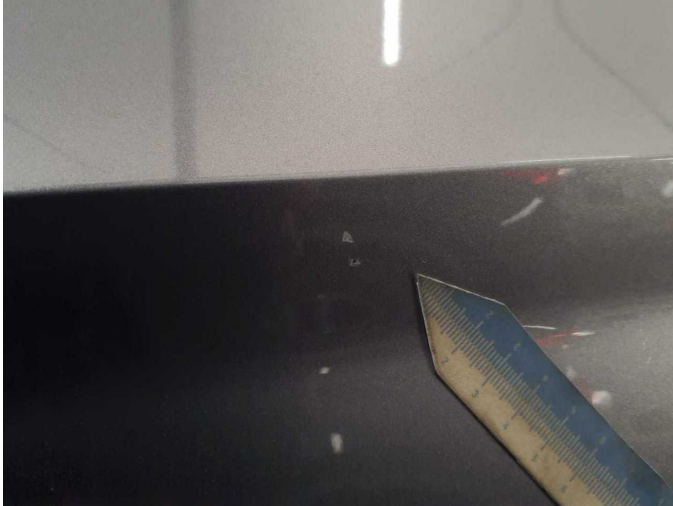
Damage 5: Door - front left side: Door - Dent / paintcoat damage - Smart repair



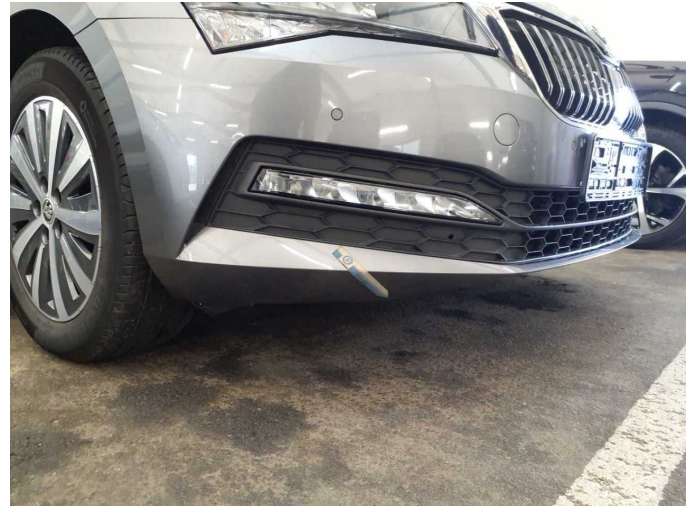
Damage 5: Door - front left side: Door - Dent / paintcoat damage - Smart repair



Damage 6: Door - rear left side: Door - Scratch(es) - Smart repair



Damage 6: Door - rear left side: Door - Scratch(es) - Smart repair



Damage 7: Front bumper: Front bumper - Scratch(es) - Smart repair



Damage 7: Front bumper: Front bumper - Scratch(es) - Smart repair



Damage 8: Rear bumper: Rear bumper (Lack ist rissig) - Paint defect - Paint



Damage 8: Rear bumper: Rear bumper (Lack ist rissig) - Paint defect - Paint



Damage 8: Rear bumper: Rear bumper (Lack ist rissig) - Paint defect - Paint



Damage 8: Rear bumper: Rear bumper (Lack ist rissig) - Paint defect - Paint



Wear and tear 1: Bonnet: Bonnet - dent(s) - No deduction



Wear and tear 1: Bonnet: Bonnet - dent(s) - No deduction



Missing part 1: Equipment: Umbrella - Missing - Replace



Wartungshistorie

(gemäß Auftraggeber Informationen)

Fahrgestellnummer: TMBJH9NPXP7034312
Hersteller / Modell: SKODA SKODA Superb Combi 2.0 TDI Ambition

Datum	KM-Stand	Beschreibung
04.03.2026	76.603	AU
21.01.2026	74.496	Motoröl b. Wartung; Ölfilter ern; Ölwechsel; Wartung Sonstiges
05.01.2026	74.096	Batterie ern; Systemtest/Eigendiagnose
30.05.2025	57.392	Bremsflüssigkeit ern; Regelwartungsdienst; Wartung Sonstiges
13.02.2025	49.236	Motoröl b. Wartung; Ölfilter ern; Ölwechsel; Wartung Sonstiges
22.03.2024	26.598	Motoröl b. Wartung; Ölfilter ern; Regelwartungsdienst; Wartung Sonstiges