

Expertise

Protocol number: 46346917
Order No. / Reference: 26527701
Inspection date: 6 Jul 2026

Manufacturer: Mercedes-Benz

Model: E 450 d 4Matic 9G-TRONIC

VIN: W1KLF2DB5SA155018



Vehicle details

Manufacturer / Type / Model / Equipment

Mercedes-Benz E 450 d 4Matic 9G-TRONIC

Vehicle Identification number W1KLF2DB5SA155018

Mileage (Read) 25,345 km

First registration 4 Jun 2025

Number of holders 1

Power / Engine displacement 270 kw / 2,989 ccm

Fuel type / Cylinder Hybrid Diesel / E / 6

Gearbox / Number of gears Automatic / 9

Type of drive All-wheel drive

Type of vehicle Saloon car

Colour / colour code Graphitgrau Metallic

Doors / Seats 4 / 5

Upholstery type Leather

Colour of upholstery Brown



Vehicle details

Maintenance booklet / proof	Non-existent	Next maintenance in	-35 Tag(e)
Key is / should be	2 / 2	FZG documents	ZB#2 (B) was available (copy), ZB#1 (S) was not available.
		Letter No.	HJ942679
Previous damage / Accident	None detectable	Repainting	None detectable
Inspection conditions	sufficient	Lifting equipment / pit	No
Test drive	Not performed	Engine function test	Performed
Manufacturer key number/ type code number	2222 / BPZ 00094		
Emission standard	EURO6;WLTP;EA;PI/CI;M, N1, N2	fine dust sticker	
Permitted total weight	2,675 kg	Empty weight	

Tyres

Mounted tyres

#	Tyre size	Type of tyre	Manufacturer	Tread depth
1)	225/55 R18 102H	Winter tyres on Light alloy	Continental	7mm / 7mm
2)	225/55 R18 102H	Winter tyres on Light alloy	Continental	8mm / 8mm

Additional tyres

#	Tyre size	Type of tyre	Manufacturer	Tread depth
1)	245/45 R19 102Y	Summer tyres on Light alloy	Pirelli	6mm / 6mm
2)	275/40 R19 105Y	Summer tyres on Light alloy	Pirelli	6mm / 6mm

Replacement

Typ	Tyre size	Type of tyre	Manufacturer	Tread depth
Tirefit		Expiration date 01/2030		

Legend: Tread depth information for the left tire is listed first, for the right tire it is listed second on the axle in the direction of travel.

TÜV SÜD Auto Partner GmbH
Wiesenring 2
04159 Leipzig

Inspection location
ARS Altmann AG Automobillogistik
Römerstraße 3
64560 Riedstadt



Equipment



Standard equipment

- ABS - Anti-lock braking system with EBV (Electronic Brakeforce Distribution)
- Airbag for driver and front passenger
- Airbag: Automatic passenger airbag deactivation
- Airbag: Kneebag for driver
- Airbag: Center airbag (Additional airbag for increased front occupant protection in the event of a side impact)
- Active Distance Assist DISTRONIC (You won't want to miss the comfort of Active Distance Assist DISTRONIC in flowing and stop-and-go traffic - The system relieves you by automatically adjusting the speed to slower vehicles ahead - The desired target distance can be set in several stages)
- 4MATIC all-wheel drive
- Ambient lighting plus
- ATTENTION ASSIST (can detect typical signs of fatigue through driver behavior and warn the driver of increasing fatigue or inattentiveness)
- Tachometer
- Electronic Stability Program (ESP)
- Chassis: AGILITY CONTROL chassis with selective damping system and lowering (The AGILITY CONTROL chassis with lowering offers you optimal road holding without compromising driving comfort - The passive selective damping system ensures a confident driving experience on any road surface because it automatically optimizes rolling behavior, damping effect and stabilization)
- Velour floor mats
- Heated rear window with timer
- Interior headliner in nevagrau fabric
- THERMATIC automatic climate control (2-zone automatic climate control: allows individually adjustable temperature for driver and front passenger - climate settings can be controlled via the multimedia system or the climate control unit in the center console - automatic recirculation (only in conjunction with navigation) - fine dust activated carbon filter for filtering dust, soot and pollen as well as reducing pollutants and odors - dew point sensor, continuous defrost nozzle under the windshield and central defrost outlet)
- Mercedes-Benz Emergency Call System (The Mercedes-Benz Emergency Call System can provide a crucial time advantage in an emergency. A communication module with its own SIM card automatically triggers an emergency call via crash sensors when an airbag or seatbelt pretensioner is deployed, thus reducing the time until emergency services arrive. The emergency call can also be triggered manually to organize assistance. In this case, the vehicle's position and direction of travel are also transmitted.)
- Package: AVANTGARDE Advanced Plus (Parking package with 360° camera - Memory package - Illuminated door sills with Mercedes-Benz lettering - DIGITAL LIGHT with Adaptive Highbeam Assist Plus - Digital extra: MBUX Augmented Reality for navigation - Illuminated radiator grille)
- Adaptive Highbeam Assist (automatic switching of the high beams on and off - camera on the inside of the windshield - detects oncoming and preceding illuminated vehicles - activated by pressing the steering wheel control lever to the high beam position)
- Airbag: Side airbag for driver and front passenger
- Airbag: Windowbag for driver, front passenger and rear passengers
- Active Parking Assist with PARKTRONIC (Transform the stress of tight parking spaces into confident serenity. The Active Parking Assist with PARKTRONIC not only finds parking spaces – it also supports you when parking and exiting them. It assists you with steering and, in vehicles with automatic transmission, also with accelerating, braking, and gear changes.)
- Automatically dimming exterior and interior mirrors
- Electrically folding exterior mirrors
- Diesel particulate filter
- Third brake light
- Driver display (31.2 cm (12.3") large LCD color display with a resolution of 2,400 x 900 pixels - 7 different contexts with specific content - 3 different display styles)
- Electric windows (4-way)
- Fingerprint scanner (color-illuminated fingerprint scanner in the control bar below the central display - protection of personal data, profiles, office functions, payment functions)
- Rear seat belt status indicator in the instrument cluster
- Pedestrian protection
- Transmission: 9-speed automatic, 9G-TRONIC
- Interior and exterior mirrors automatically dimming
- KEYLESS-GO with flush-mounted door handles (KEYLESS-GO access and drive authorization system - electronic vehicle key: communicates with the vehicle in the immediate vicinity of the door, the system electrically extends the flush-mounted handles and unlocks the vehicle when a hand touches the door handle - automatic retraction of the door handles when driving off or when the doors lock - lighting on the flush-mounted door handles)
- Fuel tank with larger capacity
- LED High Performance headlights (low beam with LED projection technology - high beam with LED reflection technology - daytime running lights, position lights and direction indicators in LED technology - adaptive full-LED taillights with automatic adjustment of light intensity to the surroundings)
- Center console wood ash black open pore
- Navigation: MBUX Navigation Premium (hard drive navigation - high-resolution navigation with satellite view - live traffic information and Car-to-X communication - fast online route calculation - trailer route planner - shared navigation - Send2Car function sends selected addresses via app - map data updates: - navigation services, local search, online search, display of detailed map view with weather information)



- Package: AVANTGARDE Interior (Multifunction steering wheel in Nappa leather with spokes in high-gloss black and galvanized steering wheel shift paddles in silver chrome - Comfort seats, partially electric with seat comfort package, lumbar support - Trim elements in open-pore black ash wood - Center console in open-pore black ash wood - Headliner in nevagrey fabric - Velour floor mats)
 - Radio: MBUX multimedia system Premium
 - Radio accessories: Digital radio (DAB) (for the DAB, DMB and DAB+ standards)
 - Radio accessory: Communication module (5G) for use with Mercedes me connect (The communication module transmits larger data volumes at high speed. The term "Advanced" refers to a particularly powerful mobile communications standard. You always benefit from this Turbo LTE, for example through even faster information flow in the many Mercedes me comfort services or Car-to-X communication.)
 - Remote Services Premium (Communication module - Mercedes me services: remote vehicle status query, programming of auxiliary heating/ventilation, remote door locking and unlocking, sunroof/windows with remote locking and opening including ventilation remote control, personalization, vehicle location, vehicle tracking, geographic vehicle monitoring, parking service monitoring, finder function (Remote Vehicle Finder), notification when exceeding the driving speed, Send2Car-Fun.)
 - Phone accessories: Wireless charging system for mobile devices at the front
 - TIREFIT (Your quick temporary solution for minor tire damage. Damage caused by embedded nails or shards of glass is sealed by sealant blown in via an air compressor. This allows you to continue driving to the nearest repair shop at speeds of up to 80 km/h.)
 - Blind Spot Assist (This system can visually and audibly warn you of side collisions with other road users in your blind spot. Even after the journey, the system remains vigilant and warns you if you open the door at the wrong moment.)
 - High-visibility vest for drivers
 - Electronic immobilizer
 - Central display with 14.4" screen diagonal (touch display with LCD technology including haptic feedback - resolution of 2,504 x 1,416 pixels (width x height))
 - Decorative elements, wood, ash, black, open-pore
- Package: AVANTGARDE Exterior (radiator grille with central Mercedes star and surround, Mercedes-Benz pattern and trim element on the single louvre in chrome - bonnet with power domes - progressive, dynamic front and rear apron design, each with trim strips in chrome and suggested air intakes at the front - beltline and window line trim strip in chrome)
 - Package: USB
 - Upholstery: ARTICO man-made leather/Ljusdal fabric
 - PRE-SAFE system (with reversible belt tensioners for driver and front passenger seats, closing function for side windows and automatic positioning for the front passenger seat)
 - Radio accessories: Pre-installation for MBUX Entertainment (Stream videos and enjoy your favorite music: This package takes the entertainment in your Mercedes to the next level. In addition to music streaming services and internet radio, ZYNC video streaming is also available. You can conveniently purchase the required data package from a selected third-party provider.)
 - Tire pressure monitoring system (TPMS)
 - Wheels: 45.7 cm (18") light alloy wheels in 5-spoke design (painted black and polished - with 225/55 R18 on 8.0J x 18 ET32.5)
 - Rear view camera
 - Seats: Rear seat backrests foldable
 - Heated seats for driver and front passenger
 - Lane Keeping Assist, active
 - Phone accessory: Android Auto
 - Phone accessories: Apple CarPlay
 - Telephone accessories: Smartphone integration (wirelessly connects the mobile phone to the MBUX multimedia system - display of selected third-party apps - access to current software and data, e.g., for navigation, traffic information, contact data, messaging, telephony, media, IP radio - optimized user interface for driving - control of smartphone functions via voice control)
 - Ambient lighting with brand logo projection (projects the brand logo in LED technology next to the open front doors)
 - Traffic Sign Assist (Evaluates the currently driven route with regard to traffic signs using a camera behind the windshield and navigation data - Early detection of speed limits and display of prohibitions as well as their cancellation in the driver's or central display as well as in the optionally available head-up display - Can recognize no-entry signs, a visual and acoustic warning is given - Pedestrian warning function in the area of zebra crossings)



Extra equipment

- Trailer maneuvering assistant (Save time and hassle when maneuvering: With the trailer maneuvering assistant, you can reverse confidently, precisely and calmly – even in difficult situations. Assisted steering is a real relief, especially for inexperienced drivers towing trailers.)
- GUARD 360° Vehicle Protection Plus (Break-in and theft warning - Tow-away protection with visual and audible warning upon detection of a change in position - Audible alarm - Interior monitoring (triggers upon movement inside the vehicle) - Assistance with vehicle theft (theft assistance), free for 3 years after activation - Emergency key deactivation, free for 3 years after activation - Collision detection, free for 3 years after activation - GUARD 360° label on the front side windows)
- Head-up display
- Radiator shroud lighting
- Paint finish: Metallic
- Navigation accessories: MBUX Augmented Reality for navigation
- Package: AMG Line Interior
- Package: ENERGIZING Package (ENERGIZING comfort programs: warmth, joy, coziness, freshness, vitality - ENERGIZING COACH - with individual program recommendations through evaluation of driving and vehicle data as well as, if required, driver data (vital parameters) through networking with common Garmin wearables - ambient lighting with program-specific lighting moods)
- Package: Leather package (leather seat covers - instrument panel and door sills in ARTICO man-made leather in Nappa look - seat climate control for driver and front passenger)
- Package: Sun protection package (sun blinds in the rear doors left and right - extendable sun visor - electric sun blind for rear window)
- Package: Technology package (AIRMATIC with all-round level control and ADS PLUS - rear axle steering with 4.5° maximum steering angle)
- Package: Winter Package Plus with 45.7 cm (18") winter complete wheels
- Upholstery: Nappa leather
- Radio accessories: Burmester surround sound system
- Wheels: Complete winter wheel sets fitted at the factory
- Sunroof: Panoramic sunroof
- Auxiliary heater (The auxiliary heater with ventilation quickly and efficiently brings your vehicle interior to a comfortable temperature on cold and hot days - In winter you also benefit from ice-free windows and in damp weather you enjoy a constantly clear view without re-fogging.)
- Glazing: Elimination of heat-insulating dark-tinted glass
- Decorative elements: wood, maple, brown, open-pore, aluminium lines
- Towbar with ESP trailer stabilization (fully electrically retractable towbar - operating button with LED light - ESP trailer stabilization - trailer mode in the MBUX multimedia system - guide pins for the FIX4BIKE system)
- ENERGIZING AIR CONTROL (Air quality sensor and one fine dust sensor each for indoor and outdoor use - Fine dust filtration with 2 filters - Activated carbon-based indoor air filter with filter layers against fine dust (PM2.5) and nitrogen oxides (NOx) or sulfur dioxides (SO2) as well as pollen - Automatic recirculation or fresh air switching depending on the measured air quality, taking into account the overall climate comfort control system - Air quality menu in the MBUX multimedia system to illustrate the measured values)
- Interior headliner MANUFAKTUR in microfiber MICROCUT black
- Center console wood maple brown open-pore aluminum lines
- Package: Acoustic Comfort Package
- Package: AMG Line Premium (AMG Line Advanced Plus - Acoustic Comfort Package - Burmester 4D Surround Sound System - Active Ambient Lighting - Comfort Package - MBUX Augmented Reality for Navigation - Illuminated Radiator Grille)
- Package: Driving Assistance Package Plus (Active Speed Limit Assist, Extended Automatic Restart on Motorways, Route-Based Speed Adaptation with Traffic Jam Function, Active Steering Assist, Active Emergency Stop Assist with SOS Function, Emergency Lane Function, Active Brake Assist, Turning and Intersection Function, Traffic Jam Emergency Braking Function, Evasive Steering Assist, Active Lane Keeping Assist, Active Blind Spot Assist, Exit Warning Function, Pedestrian Warning Function in Zebra Crossing Areas)
- Package: USB Package Plus (2 USB-C ports in the front storage compartment, fast charging and suitable for data transfer - 2 USB-C ports under the center armrest, fast charging and suitable for data transfer - 2 USB-C ports in the rear center console, fast charging)
- Radio accessories: 3D driver display
- Wheels: 48.3 cm (19") AMG light-alloy wheels in a 5-twin-spoke design
- Servo closing (Servo closing pulls your doors gently and almost silently into the lock. You only need to close the doors until they first click into place - your vehicle takes care of the rest.)
- Roof rack (The base rack for a variety of Mercedes-Benz roof accessories such as roof boxes, bicycle carriers or ski racks expands your transport options. The rack is precisely matched to the vehicle body and offers the best possible safety and aerodynamics. The robust storage bag allows you to store it safely.)



Brief expert findings

Documents submitted	At the time of the inspection, the vehicle registration certificate Part 2 (title) was available, but the vehicle registration certificate Part 1 (document) was not. (Copy)
VIN comparison	The vehicle identification number (VIN) was read from the vehicle and its conformity with the submitted documents was confirmed by the undersigned during the inspection.
Inspection	The inspection conditions were sufficient for the assessment of the vehicle. No lifting equipment or pit was available for inspecting the vehicle. Therefore, inspection of the vehicle's underside was only possible to a limited extent.
Test drive	No test drive/shunting maneuver was carried out during the inspection of the vehicle.
Engine function test	An engine test run was performed.

Value reducing factors

No.	Component group	Description
1	Instrument panel	Indicator light (Aktiver Brems-Assistent) - Specify findings - Perform diagnosis
2	Instrument panel	Indicator light (Aktiver Totwinkel-Assistent) - Specify findings - Perform diagnosis
3	Misc.	Inspection / maintenance - Due - Replace
4	Wheel / tyres	Alloy rim - front right side - Scratched - Replace
5	Vehicle glazing	Windscreen with lane departure assistant - Broken / torn - Replace

Order/Scope of Order

An order was placed to prepare a sales report for the described vehicle. This report includes the following:

- Description of key vehicle information
- Documentation of equipment features
(*Delivery by third-party service providers*)
- Documentation of damage, defects, missing parts
- Documentation of prior damage, unrepaired prior damage, repainting
- A brief visual or functional inspection of the equipment details, if possible.
(*Functional testing of driver assistance systems is not included in the scope of services!*)
- a photographic documentation of the vehicle

Basis for the order

This product is based on the guidelines for vehicle returns and valuations published by Alphabet Fleet GmbH. The expert makes the specific findings in each individual case objectively, within the framework of the prescribed standards, based on their own expertise.

The vehicle inspection takes place in a fully assembled, unassembled state.

Damage or defects that can only be detected during disassembly/diagnostic work or through further investigation remain within the realm of prognostic risk. An increased risk exists due to concealed defects caused by fraudulent misrepresentation and which were not identifiable by the expert.

Damage or defects resulting from normal use or wear and tear of the vehicle will be accepted in accordance with the applicable standard.

There was no explicit identification or monetary consideration of the expected features within the product.

Features which, in their nature and extent, slightly exceed normal use but do not constitute unacceptable damage, will be documented and indicated as signs of wear, if applicable.

Damage or defects that, according to the applicable standard, can no longer be attributed to normal use or wear and tear are listed under "Value Reducing Factors" in the product description.

Depending on the product specification, a monetary ID can be provided. If this takes place, the costs can be 100% d or pro rata depending on the vehicle's age and mileage.



Previous damages

No apparent prior damage that had been repaired could be found on the vehicle.

Comments

- Die Unterbodenbesichtigung war nur ebenerdig & eingeschränkt möglich. Mehrkosten möglich.



Figure 1: Diagonal front (left)



Figure 2: Diagonal front (right)



Figure 3: Diagonal rear (left)



Figure 4: Diagonal rear (right)



Figure 5: Interior - front



Figure 6: Interior - rear



Figure 7: Instrument cluster



Figure 8: Instrument panel



Figure 9: Interior 360° view



Figure 10: Cargo area



Figure 11: VIN



Figure 12: Mounted tyres



Figure 13: Documents



Figure 14: Documents



Figure 15: Additional tyres

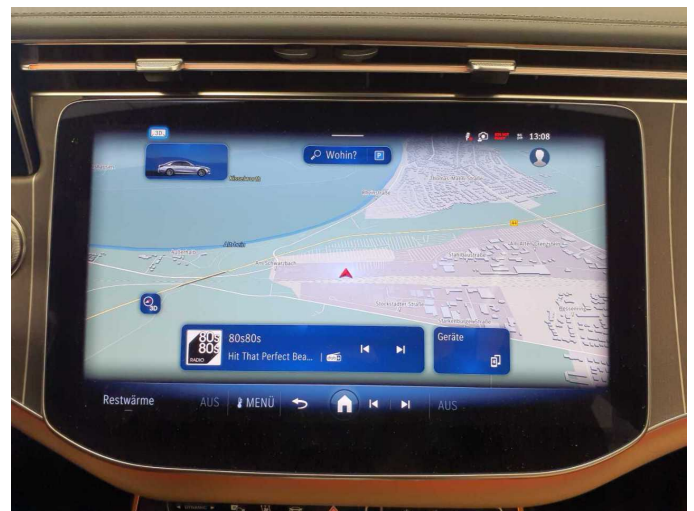


Figure 16: Navigation



Figure 17: Misc.



Figure 18: Misc.



Figure 19: Misc.



Figure 20: Misc.



Figure 21: Misc.



Figure 22: Misc.



Figure 23: Misc.



Figure 24: Misc.

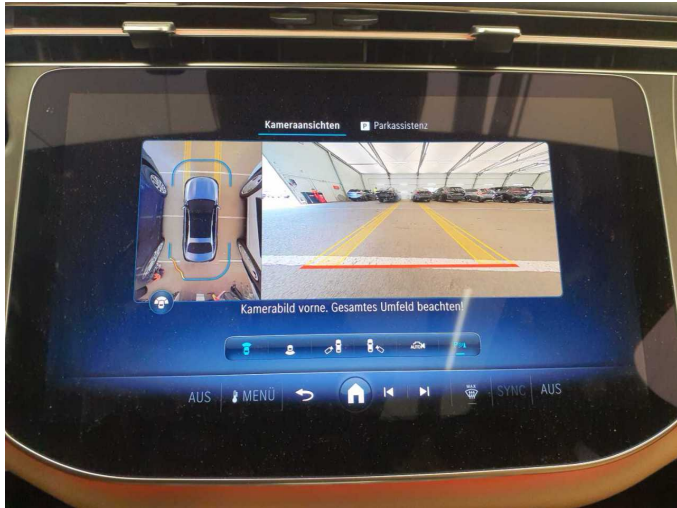


Figure 25: Misc.

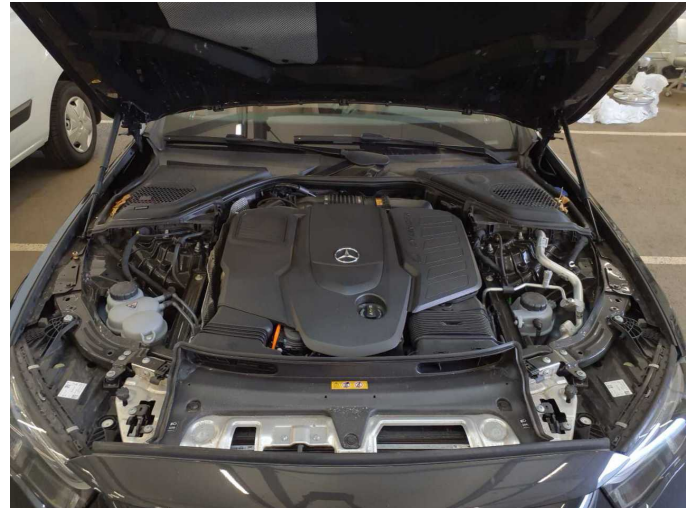


Figure 26: Misc.



Figure 27: Misc.



Figure 28: Misc.



Figure 29: Misc.



Figure 30: Misc.



Figure 31: Misc.



Figure 32: Misc.



Figure 33: Misc.

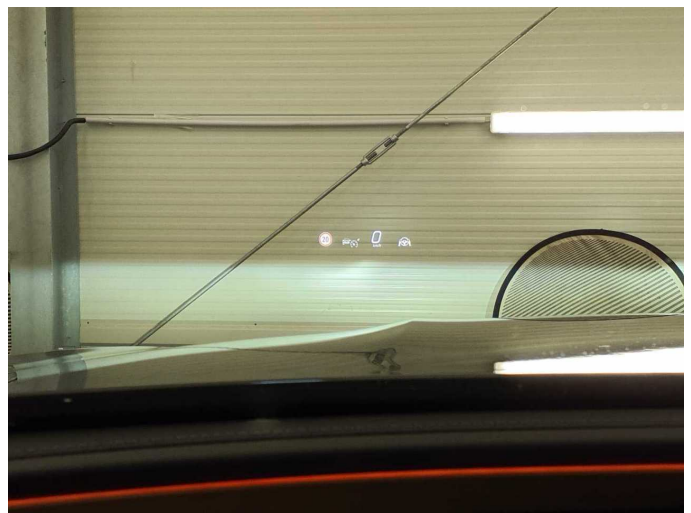


Figure 34: Misc.



Damage 1: Instrument panel: Indicator light (Aktiver Brems-Assistent) - Specify findings - Perform diagnosis



Damage 2: Instrument panel: Indicator light (Aktiver Totwinkel-Assistent) - Specify findings - Perform diagnosis



Damage 3: Misc.: Inspection / maintenance - Due - Replace



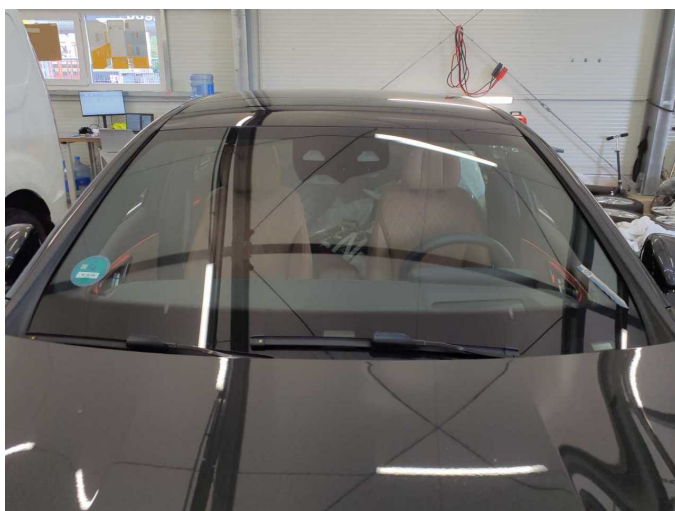
Damage 4: Wheel / tyres: Alloy rim - front right side - Scratched - Replace



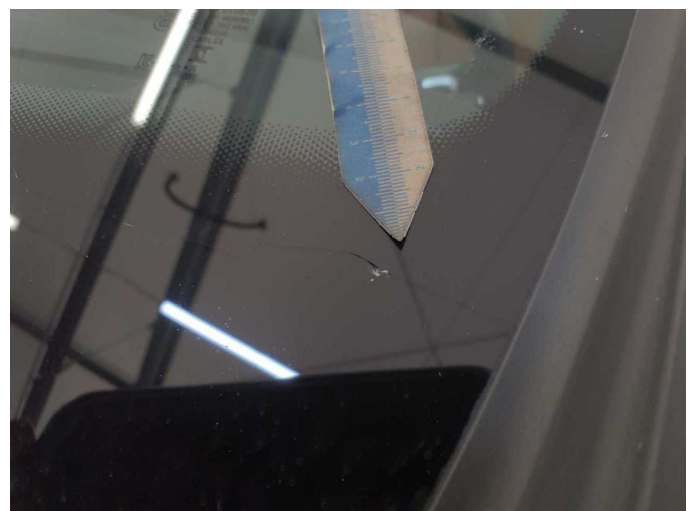
Damage 4: Wheel / tyres: Alloy rim - front right side - Scratched - Replace



Damage 4: Wheel / tyres: Alloy rim - front right side - Scratched - Replace



Damage 5: Vehicle glazing: Windscreen with lane departure assistant - Broken / torn - Replace



Damage 5: Vehicle glazing: Windscreen with lane departure assistant - Broken / torn - Replace