

Expertise

Protocol number: 45739928
Order No. / Reference: 26382009
Inspection date: 1 Jun 2026

Manufacturer: Mercedes-Benz

Model: C 220 d 4Matic T All-Terrain 9G-TRONIC Avantgarde Advanced

VIN: W1KAH1EBXRF162067



Vehicle details

Manufacturer / Type / Model / Equipment

Mercedes-Benz C 220 d 4Matic T All-Terrain 9G-TRONIC Avantgarde Advanced

Vehicle Identification number W1KAH1EBXRF162067

Mileage (Read) 152,909 km

First registration 10 Apr 2024

Number of holders 1

Power / Engine displacement 147 kw / 1,993 ccm

Fuel type / Cylinder Hybrid Diesel / E / 4

Gearbox / Number of gears Automatic / 9

Type of drive All-wheel drive

Type of vehicle Station wagon

Colour / colour code Sodalithblau Metallic

Doors / Seats 5 / 5

Upholstery type Cloth / leather combination

Colour of upholstery Black-Anthracite



Vehicle details

Maintenance booklet / proof	digital proof / complete	Next maintenance in	310 Tag(e)
Last service on / at	03/2026 at 147,055 km		
Key is / should be	2 / 2	FZG documents	ZB#2 (B) was available (copy), ZB#1 (S) was not available.
		Letter No.	HB203708
Previous damage / Accident	Detectable	Repainting	None detectable
Inspection conditions	sufficient	Lifting equipment / pit	yes
Test drive	Not performed	Engine function test	Performed
Manufacturer key number/ type code number	2222 / BBU 00281		
Emission standard	EURO6;WLTP;EA;PI/CI;M, N1, N2	fine dust sticker	
Permitted total weight	2,400 kg	Empty weight	

Tyres

Mounted tyres

#	Tyre size	Type of tyre	Manufacturer	Tread depth
1)	225/55 R17 97H	Winter tyres on Light alloy	Pirelli	5mm / 5mm
2)	225/55 R17 97H	Winter tyres on Light alloy	Pirelli	6mm / 6mm

Additional tyres

#	Tyre size	Type of tyre	Manufacturer	Tread depth
1)	225/55 R17 97Y	Summer tyres on Light alloy	Pirelli	6mm / 6mm
2)	225/55 R17 97Y	Summer tyres on Light alloy	Pirelli	6mm / 6mm

Replacement

Typ	Tyre size	Type of tyre	Manufacturer	Tread depth
	Tirefit	Expiration date 01/2029		

Legend: Tread depth information for the left tire is listed first, for the right tire it is listed second on the axle in the direction of travel.



Equipment

Standard equipment

- Adaptive Highbeam Assist
- Airbag: Automatic passenger airbag deactivation
- Airbag: Side airbag for driver and front passenger
- 4MATIC all-wheel drive
- ATTENTION ASSIST
- Basic services
- Brake assist, active
- Diesel particulate filter
- DYNAMIC SELECT
- Electronic Stability Program (ESP)
- Chassis: Comfort chassis
- Fingerprint scanner
- Speed Limit Assistant
- rear window wiper
- Interior headliner fabric crystal grey
- KEYLESS-GO start function
- THERMATIC automatic climate control with 2 climate zones
- Front headrests
- Cargo area cover including EASY-PACK safety net
- Steering wheel: Multifunction sports steering wheel in leather
- Package: Storage
- Package: Interior lighting package
- Package: Parking package with reversing camera
- Package: Mirror package
- Upholstery: ARTICO leatherette/fabric
- Radio: MBUX multimedia system
- Radio accessories: Communication module (LTE) for using Mercedes me connect services
- Remote Services
- Windscreen wipers with rain sensor
- Seats: Heated seats for driver and front passenger
- Lane Keeping Assist, active
- Phone accessories: Smartphone integration
- Cruise control
- Fully digital instrument display
- High-visibility vest for drivers
- Central locking with remote control
- Airbag for driver and front passenger
- Airbag: Center airbag
- Airbag: Windowbag for driver and front passenger
- Ambient lighting with 64 light colors
- Left and right exterior mirrors are heated and electrically adjustable
- Roof rails in polished aluminum
- Double cup holder at the front
- EASY-PACK tailgate
- Driver display
- Electric windows (4-way)
- Velour floor mats
- Transmission: 9-speed automatic, 9G-TRONIC
- Heated rear window
- ISOFIX child seat attachment with top tether in the rear
- Mechanical child safety lock for the rear doors
- Rear headrests (3)
- Fuel tank with larger volume 66 l
- LED High Performance Headlights
- Mercedes-Benz emergency call system
- Navigation: MBUX Navigation Premium
- Package: Avantgarde Advanced
- Package: Trunk Comfort
- Package: Seating comfort
- Package: USB
- Radio: Extended MBUX functions
- Radio accessories: Digital radio (DAB)
- Radio accessories: Central display
- Tire pressure monitoring system (TPMS)
- Wheels: 43.2 cm (17") alloy wheels in a 5-spoke design
- Power steering
- Seats: Rear seat backrests foldable
- Phone accessories: Wireless charging system for mobile devices
- TIREFIT with tire inflation compressor
- Pre-installation for digital key handover
- Electronic immobilizer
- Decorative elements in diamond pattern, silver-grey



Extra equipment

- Active Distance Assist DISTRONIC
- Head-up display (lens and mirror system projects a virtual image into the driver's field of vision at a distance of 4.5 m above the hood - full-color display that is easily readable even on sunny days and at night - depending on the equipment, display of, for example, navigation instructions, speed, speed limits or settings of cruise control or active distance assist DISTRONIC)
- Paint finish: Metallic
- Center console metal structure
- Package: AVANTGARDE Advanced Plus (Driver's seat electrically adjustable with memory function: Driver and front passenger seats, steering column and exterior mirrors electrically adjustable and storable, seat fore/aft position and headrest height additionally electrically adjustable, 3 memory settings each for driver and front passenger, 4-way lumbar support for driver and front passenger, seat cushion depth adjustment with gapless cushion, PRE-SAFE positioning, Blind Spot Assist, Illuminated door sills with "Mercedes-Benz" lettering, Traffic Sign Assist, Ambient Lighting Plus)
- Wheels: Complete summer wheel sets fitted at the factory
- DIGITAL LIGHT (HD system with projection module (more than 1 million pixels per headlight) - MULTIBEAM LED background module - Topography compensation - Adaptive Highbeam Assist Plus - ULTRA RANGE high beam - Active cornering lights with predictive control - Extended fog lights, turning lights, country road lights, city lights, bad weather lights, as well as motorway lights and motorway high beams with optimized illumination of the road surface for the driving situation - Turning lights with roundabout and intersection warning - Off-road lights for vehicles - Adaptive full LED rear lights)
- Package: Winter package Plus with 43.2 cm (17") winter complete wheels (Winter package - Winter complete wheels M+S 4-way 43.2 cm (17"))
- PRE-SAFE system (preventive reversible belt tensioning of driver and front passenger seat belts - closing of the open side windows or the optional panoramic sunroof to a residual gap in the event of a detected impending rollover - positioning of the front passenger seat, depending on the equipment, in a position more favorable for the possible impact)

Brief expert findings

Documents submitted	At the time of the inspection, the vehicle registration certificate Part 2 (title) was available, but the vehicle registration certificate Part 1 (document) was not. (Copy)
VIN comparison	The vehicle identification number (VIN) was read from the vehicle and its conformity with the submitted documents was confirmed by the undersigned during the inspection.
Inspection	The inspection conditions were sufficient for the assessment of the vehicle. Lifting equipment and/or a pit were available for examining the vehicle.
Test drive	No test drive/shunting maneuver was carried out during the inspection of the vehicle.
Engine function test	An engine test run was performed.

Value reducing factors

No.	Component group	Description
1	2nd wheel set	1 alloy rim - Scratch(es) - Loss in value
2	Vehicle glazing	Windscreen (Rissbildung) - Stone chips - Replace

Wear and tear

No.	Component group	Description
1	Front bumper	Front bumper - Stone chips - No deduction
2	Bonnet	Bonnet - Stone chips - No deduction

The vehicle shows signs of wear and tear commensurate with its age and use.

Missing parts

Description

2nd wheel set - Wheel cover set - complete (Nabendeckel x4)



Previous damages

No.	Previous damage	Extent of damage (Net)
1	Front, Provided by user / customer, from 20 Sept 2025	2.885,41 €

Order/Scope of Order

An order was placed to prepare a sales report for the described vehicle. This report includes the following:

- Description of key vehicle information
- Documentation of equipment features
(Delivery by third-party service providers)
- Documentation of damage, defects, missing parts
- Documentation of prior damage, unrepaired prior damage, repainting
- A brief visual or functional inspection of the equipment details, if possible.
(Functional testing of driver assistance systems is not included in the scope of services!)
- a photographic documentation of the vehicle

Basis for the order

This product is based on the guidelines for vehicle returns and valuations published by Alphabet Fleet GmbH. The expert makes the specific findings in each individual case objectively, within the framework of the prescribed standards, based on their own expertise.

The vehicle inspection takes place in a fully assembled, unassembled state.

Damage or defects that can only be detected during disassembly/diagnostic work or through further investigation remain within the realm of prognostic risk. An increased risk exists due to concealed defects caused by fraudulent misrepresentation and which were not identifiable by the expert.

Damage or defects resulting from normal use or wear and tear of the vehicle will be accepted in accordance with the applicable standard.

There was no explicit identification or monetary consideration of the expected features within the product.

Features which, in their nature and extent, slightly exceed normal use but do not constitute unacceptable damage, will be documented and indicated as signs of wear, if applicable.

Damage or defects that, according to the applicable standard, can no longer be attributed to normal use or wear and tear are listed under "Value Reducing Factors" in the product description.

Depending on the product specification, a monetary ID can be provided. If this takes place, the costs can be 100% d or pro rata depending on the vehicle's age and mileage.

Previous damages

According to available information previous damages were repaired at the vehicle. Traces of repairs, which allow conclusions about the area of repair, were not recognizable during the inspection.

Comments

Wartungshistorie gemäß Auftraggeber Informationen.

ALPHABET



Figure 1: Diagonal front (left)

ALPHABET



Figure 2: Diagonal front (right)

ALPHABET



Figure 3: Diagonal rear (left)

ALPHABET



Figure 4: Diagonal rear (right)



Figure 5: Interior - front



Figure 6: Interior - rear



Figure 7: Instrument cluster



Figure 8: Instrument panel



Figure 9: Interior 360° view



Figure 10: Cargo area

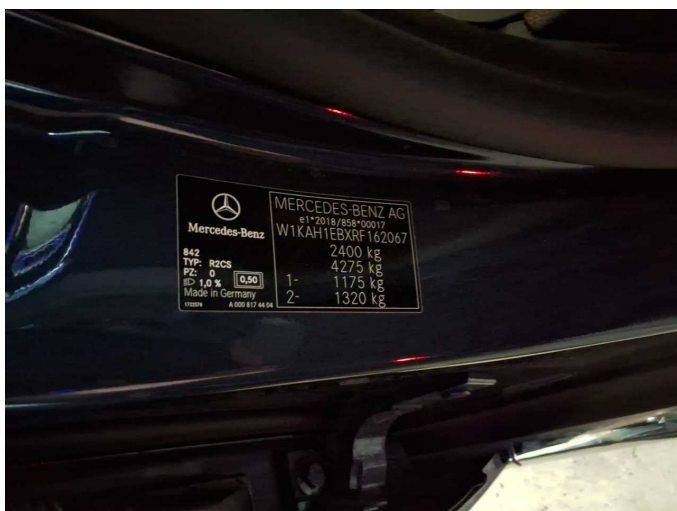


Figure 11: VIN



Figure 12: Mounted tyres



Figure 13: Documents



Figure 14: Additional tyres



Figure 15: Navigation



Figure 16: Misc.



Figure 17: Misc.



Figure 18: Misc.



Figure 19: Misc.



Figure 20: Misc.



Figure 21: Misc.

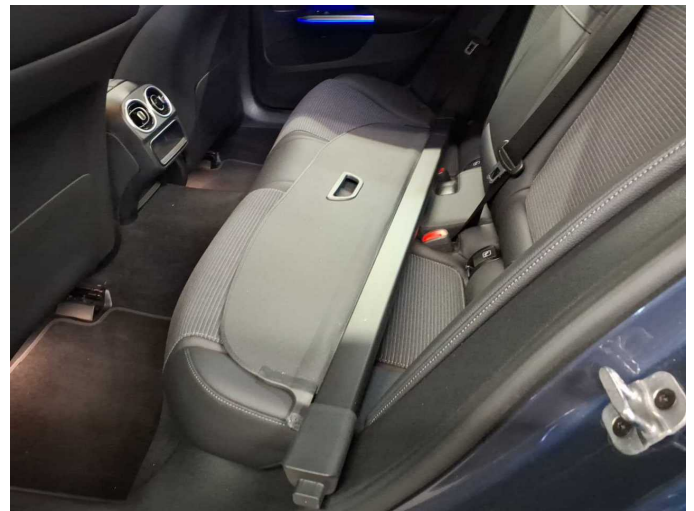


Figure 22: Misc.



Figure 23: Misc.

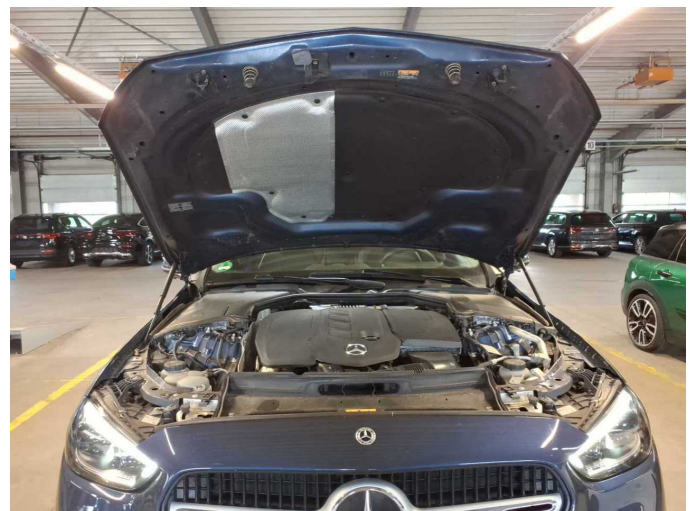


Figure 24: Misc.



Figure 25: Misc.



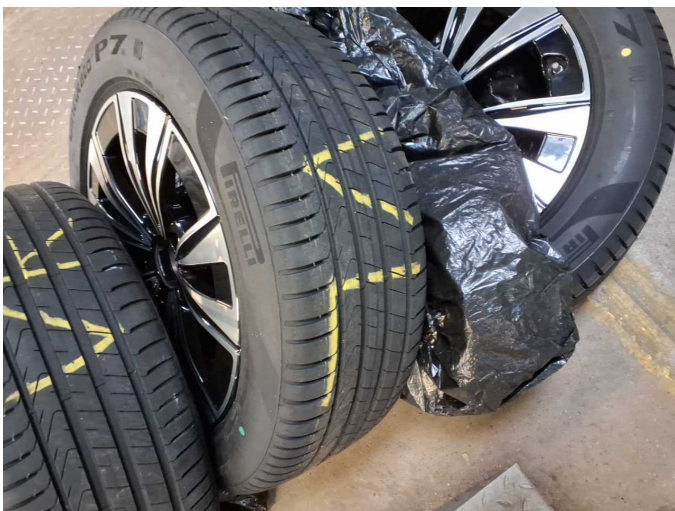
Figure 26: Misc.



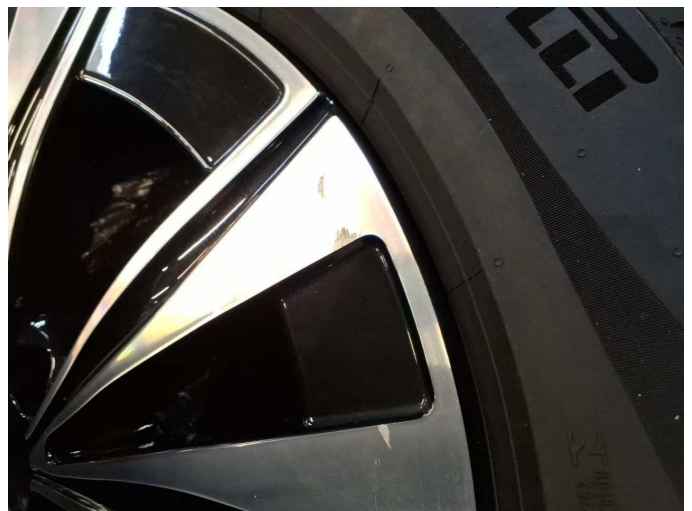
Figure 27: Misc.



Figure 28: Misc.



Damage 1: 2nd wheel set: 1 alloy rim - Scratch(es) - Loss in value



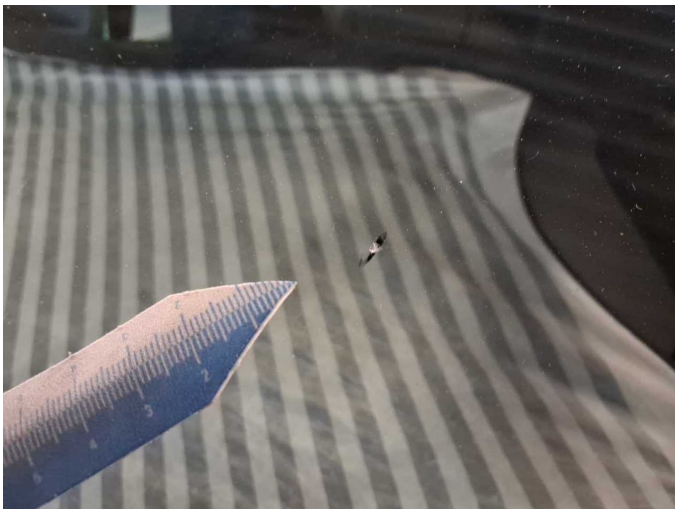
Damage 1: 2nd wheel set: 1 alloy rim - Scratch(es) - Loss in value



Damage 2: Vehicle glazing: Windscreen (Rissbildung) - Stone chips - Replace



Damage 2: Vehicle glazing: Windscreen (Rissbildung) - Stone chips - Replace



Damage 2: Vehicle glazing: Windscreen (Rissbildung) - Stone chips - Replace



Missing part 1: 2nd wheel set: Wheel cover set - complete (Nabendeckel x4) - Missing - Replace



Missing part 1: 2nd wheel set: Wheel cover set - complete (Nabendeckel x4) - Missing - Replace



Wartungshistorie

(gemäß Auftraggeber Informationen)

Fahrgestellnummer: W1KAH1EBXRF162067

Hersteller / Modell: MERCEDES-BENZ MB C 220 d 4Matic T All-Terrain 9G-TRONIC
Avantgarde Advanced

Datum	KM-Stand	Beschreibung
16.03.2026	147.055	Regelwartungsdienst
24.11.2025	123.647	Regelwartungsdienst
22.07.2025	99.789	Regelwartungsdienst
12.03.2025	75.823	Bremsscheiben+Beläge v+h; Regelwartungsdienst
26.11.2024	50.749	Regelwartungsdienst
15.08.2024	26.403	Regelwartungsdienst