

## Expertise

Protocol number: 46358019  
Order No. / Reference: 26616856  
Inspection date: 30 Jun 2026

Manufacturer: Volkswagen

Model: Touran 2.0 TDI SCR DSG ACTIVE

VIN: WVGZZZ1TXPW008118



### Vehicle details

#### Manufacturer / Type / Model / Equipment

Volkswagen Touran 2.0 TDI SCR DSG ACTIVE

**Vehicle Identification number** WVGZZZ1TXPW008118

**Mileage (Read)** 161,053 km

**First registration** 1 Mar 2023

**Number of holders** 1

**Power / Engine displacement** 110 kw / 1,968 ccm

**Fuel type / Cylinder** Diesel / 4

**Gearbox / Number of gears** Automatic / 7

**Type of drive** Front drive

**Type of vehicle** Station wagon

**Colour / colour code** uranograu (17F)

**Doors / Seats** 5 / 5

**Upholstery type** Cloth

**Colour of upholstery** Black



## Vehicle details

<b>Maintenance booklet / proof</b>	digital proof / complete	<b>Next maintenance in</b>	29,900 km
<b>Last service on / at</b>	10/2025 at 13,538 km		
<b>Key is / should be</b>	2 / 2	<b>FZG documents</b>	ZB#2 (B) was available (copy), ZB#1 (S) was not available.
		<b>Letter No.</b>	GP862537
<b>Previous damage / Accident</b>	None detectable	<b>Repainting</b>	None detectable
<b>Inspection conditions</b>	sufficient	<b>Lifting equipment / pit</b>	No
<b>Test drive</b>	Not performed	<b>Engine function test</b>	Performed
<b>Manufacturer key number/ type code number</b>	0603 / BWR 00420		
<b>Emission standard</b>	EURO6;WLTP;AP;PI/CI; M, N1 I	<b>fine dust sticker</b>	
<b>Permitted total weight</b>	2,230 kg	<b>Empty weight</b>	

## Tyres

### Mounted tyres

#	Tyre size	Type of tyre	Manufacturer	Tread depth
1)	205/60 R16 96V	Summer tyres on Light alloy	Pirelli	6mm / 6mm
2)	205/60 R16 96V	Summer tyres on Light alloy	Pirelli	6mm / 6mm

### Additional tyres

#	Tyre size	Type of tyre	Manufacturer	Tread depth
1)	205/60 R16 96H	Winter tyres on Light alloy	Semperit	1mm / 1mm
2)	205/60 R16 96H	Winter tyres on Light alloy	Goodyear	6mm / 6mm

**Legend: Tread depth information for the left tire is listed first, for the right tire it is listed second on the axle in the direction of travel.**

TÜV SÜD Auto Partner GmbH  
Wiesenring 2  
04159 Leipzig

Inspection location  
Hartmann Fleet Professionals GmbH  
Leerenstraße 25  
29683 Bad Fallingbommel



## Equipment



## Standard equipment

- 2 USB-C ports on the front
- Storage compartments in the overhead console
- Airbag, head airbag system for front and rear passengers (including front side airbags)
- Extended warranty, 3 years following the manufacturer's warranty, maximum total mileage 50,000 km
- Front air vents and rotary light switch with chrome trim
- Adaptive Cruise Control (ACC) "stop & go", with speed limiter
- Electrically folding exterior mirrors (dimming on the driver's side, ambient lighting and passenger-side mirror lowering)
- Headliner in Storm Grey
- Decorative inlays "Piano Black" (for center console)
- Diesel particulate filter
- Tachometer
- Parking aid (acoustic warning signals for obstacles in the front and rear area)
- Electronic Stability Program (ESP) with counter-steering support (Incl. ABS with brake assist, ASR (traction slip control), EDS (electronic differential lock), MSR (engine drag torque control) and trailer stabilization)
- Windscreen made of laminated safety glass, heat and sound insulating
- Luggage management package (with luggage net that can be fixed to rails)
- Additional luggage compartment lighting (removable and usable as a flashlight)
- Transmission: 7-speed DSG (7-speed dual-clutch transmission DSG)
- Glove compartment with cooling option
- Rear window wiper with intermittent function
- Interior mirror automatically dimming
- ISOFIX mounting points on rear seats (device for attaching child seats to the rear seats)
- Headrests (3) in the 2nd row of seats (height adjustable)
- Front headrests (safety-optimized, longitudinally and height-adjustable)
- LED light in the front footwell
- Headlight range control
- Illuminated makeup mirrors in the sun visors
- Multifunctional camera
- Fatigue detection (detects signs of possible driver fatigue based on characteristic steering behavior, time of day and driving duration and issues a visual and audible warning)
- Emergency call service (no registration required, service is activated upon delivery)
- Upholstery: Cloth
- Radio "Ready 2 Discover" incl. "Streaming & Internet" (Radio - Prepared for later activation: Navigation function "Discover Media" incl. "Streaming & Internet")
- Rain sensor
- Wheels: Tire pressure monitoring system
- Storage compartment with lid on the instrument panel
- Airbag for driver and front passenger (with front passenger airbag deactivation, including driver's side knee airbag)
- Ambient lighting (light strips on the front door trim; illuminated front door openers and armrests)
- App-Connect including App-Connect Wireless for Apple CarPlay and Android Auto (selected apps for Android smartphones and Apple iPhones can be displayed and operated on the touchscreen of the radio or navigation system)
- Exterior mirror housings and door handles in body color
- third brake light
- Roof rails, silver anodized
- Decorative inlays for special model
- Digital Cockpit, multi-colored (various info profiles selectable)
- Door sill trims for special edition model
- Electronic parking brake including auto-hold function
- Automatic headlight control with daytime running lights ("Leaving home" function and manual "Coming home" function)
- High beam control "Light Assist"
- Pedestrian and cyclist detection as well as active front hood
- Luggage compartment cover (with comfort opening, extendable, removable and stowable)
- Luggage compartment floor height adjustable (with fixing element)
- Halogen headlights (and turn signals under a common clear glass cover)
- Rear window heated
- Interior lights with delayed shut-off and dimming function, 2 LED reading lights front and rear
- Air conditioning system "Air Care Climatronic" (with active combination filter, rear controls and 3-zone temperature control)
- Black radiator grille with chrome strips on the slats
- Paint finish: Solid
- Steering wheel: Multifunction steering wheel in leather, with paddle shifters
- Front center armrest (height and length adjustable - with removable storage box - 2 rear air vents)
- Non-smoking version (1 cup holder and power outlet instead of ashtray and cigarette lighter)
- Emergency braking assistant "Front Assist" (for automatic distance control ACC up to 210 km/h)
- Pedals and footrest in brushed stainless steel
- Proactive occupant protection system in conjunction with "Front Assist" and "Side Assist"
- Radio accessories: 8 speakers
- Radio accessories: Digital radio reception DAB+
- Wheels: Light alloy (4) "Galway" 6.5 J x 16 (in black, polished surface, tires 205/60 R16)
- Gearshift knob in leather
- Automatically heated front windshield washer nozzles
- Keyless start system without safe locking



- Wheels: Tire Mobility Set (12-volt compressor and tire sealant)
- Headlight cleaning system
- Drawers under the front seats
- Electromechanical power steering (speed-dependent control)
- Seats: 3 individual seats in the 2nd row (longitudinal adjustment, backrest tilt adjustment, armrest and "EasyFold" folding function)
- Seats: Comfort seats in the front
- Seats: Lumbar support in the front
- Seats: Front seats are height-adjustable
- Lane keeping assistant "Lane Assist"
- Start-stop system (with brake energy recuperation)
- 12V power outlet on the rear center console (and in the luggage compartment)
- Bumpers in body color (front with chrome trim strips at the bottom)
- Telephone interface
- Textile floor mats (front and rear)
- First aid kit, warning triangle and high-visibility vest
- Prepared for "We Connect" and "We Connect Plus" (online information is transmitted directly to the car (e.g. navigation with point-of-interest search, online traffic information, parking information, etc.))
- Black trim strips on the side windows

#### Extra equipment

- Towbar, foldable with electric release
- "Discover Media" navigation system including "Streaming & Internet" (radio)
- Mesh partition
- Radio accessories: "DYNAUDIO Contour Surround" sound system (8+1 speakers - total output 330 watts - digital 16-channel amplifier)
- Rear View reversing camera (displays the rear of the vehicle in real time on the radio/navigation system display)

- Rear side windows and rear window tinted
- Seat belts: 3 three-point automatic seat belts in the rear (and seat belt tensioners in the rear)
- Seats: Front passenger seat backrest folds down completely (with table and pass-through function)
- Seats: Folding tables on the backs of the front seats (tilt adjustable)
- Seats: Heated front seats
- Voice control
- Lane change assistant "Side Assist" and parking assistant (warns the driver of vehicles that could pose a danger during lane changes by means of visual signals in the respective exterior mirror - monitors the area behind and beside the vehicle when reversing out of a parking space - issues visual and acoustic warning signals when a vehicle is detected crossing the parking space path - can initiate emergency braking to reduce the severity of a collision or to prevent a collision altogether)
- Washer fluid level warning light
- Warning tone and light for unfastened front seat belts (warning light for unfastened rear seat belts)
- Electronic immobilizer

- IQ.LIGHT - LED headlights (Dynamic Light Assist high beam control - Automatic headlight control with daytime running lights, "Leaving home" function and manual "Coming home" function - LED headlights with LED daytime running lights and cornering lights - Dynamic headlight range control with dynamic cornering lights - Multifunction camera)

### Brief expert findings

Documents submitted	At the time of the inspection, the vehicle registration certificate Part 2 (title) was available, but the vehicle registration certificate Part 1 (document) was not. (Copy)
VIN comparison	The vehicle identification number (VIN) was read from the vehicle and its conformity with the submitted documents was confirmed by the undersigned during the inspection.
Inspection	The inspection conditions were sufficient for the assessment of the vehicle. No lifting equipment or pit was available for inspecting the vehicle. Therefore, inspection of the vehicle's underside was only possible to a limited extent.
Test drive	No test drive/shunting maneuver was carried out during the inspection of the vehicle.
Engine function test	An engine test run was performed.



## Value reducing factors

No.	Component group	Description
1	Misc.	Main inspection - No evidence - No deduction
2	Door - front left side	Door (Verkleidung oben) - Soiled - Clean
3	Bonnet	Bonnet (Zusätzlich Steinschläge) - dent(s) - Smooth repair work
4	Boot lid / rear door	Boot lid - Scratch(es) - Smart repair
5	Front bumper	Front bumper - Scratch(es) - Smart repair
6	Side panel - rear right side	Sill - Scratch(es) - Smart repair
7	Instrument panel	Air nozzle - centre (Hinten) - Broken / torn - Replace
8	Bonnet	Emblem - Broken / torn - Replace
9	Door - rear right side	Door (Anätzung) - Paint defect - Repair and paint
10	Rear bumper	Rear bumper - Dent / paintcoat damage - Repair and paint
11	Door - rear left side	Door - Deformed - Repair and paint

## Wear and tear

No.	Component group	Description
1	Trim / covers	Boot lid - interior trim - Scratch(es) - No deduction
2	2nd wheel set	1 alloy rim - Scratch(es) - No deduction
3	2nd wheel set	2 tyres - Worn - No deduction
4	2nd wheel set	2nd wheel set - Soiled - No deduction
5	Wheel / tyres	Alloy rim - front right side - Scratch(es) - No deduction
6	Vehicle glazing	Windscreen - Stone chips - No deduction
7	Rear bumper	Spoiler - Scratch(es) - No deduction
8	Door - front left side	Door edge - Scratch(es) - No deduction
9	Sill - left side	Sill - Scratch(es) - No deduction

The vehicle shows signs of wear and tear commensurate with its age and use.

## Order/Scope of Order

An order was placed to prepare a sales report for the described vehicle. This report includes the following:

- Description of key vehicle information
- Documentation of equipment features  
(*Delivery by third-party service providers*)
- Documentation of damage, defects, missing parts
- Documentation of prior damage, unrepaired prior damage, repainting
- A brief visual or functional inspection of the equipment details, if possible.  
(*Functional testing of driver assistance systems is not included in the scope of services!*)
- a photographic documentation of the vehicle



## Basis for the order

This product is based on the guidelines for vehicle returns and valuations published by Alphabet Fleet GmbH. The expert makes the specific findings in each individual case objectively, within the framework of the prescribed standards, based on their own expertise.

The vehicle inspection takes place in a fully assembled, unassembled state.

Damage or defects that can only be detected during disassembly/diagnostic work or through further investigation remain within the realm of prognostic risk. An increased risk exists due to concealed defects caused by fraudulent misrepresentation and which were not identifiable by the expert.

Damage or defects resulting from normal use or wear and tear of the vehicle will be accepted in accordance with the applicable standard.

There was no explicit identification or monetary consideration of the expected features within the product.

Features which, in their nature and extent, slightly exceed normal use but do not constitute unacceptable damage, will be documented and indicated as signs of wear, if applicable.

Damage or defects that, according to the applicable standard, can no longer be attributed to normal use or wear and tear are listed under "Value Reducing Factors" in the product description.

Depending on the product specification, a monetary ID can be provided. If this takes place, the costs can be 100% d or pro rata depending on the vehicle's age and mileage.

## Previous damages

No apparent prior damage that had been repaired could be found on the vehicle.



Figure 1: Diagonal front (left)



Figure 2: Diagonal front (right)



Figure 3: Diagonal rear (left)



Figure 4: Diagonal rear (right)



Figure 5: Interior - front



Figure 6: Interior - rear



Figure 7: Instrument cluster



Figure 8: Instrument panel



Figure 9: Interior 360° view



Figure 10: Cargo area

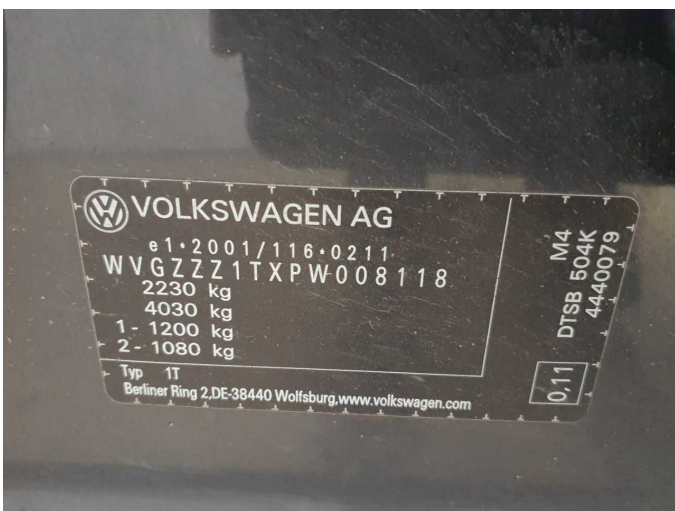


Figure 11: VIN



Figure 12: Mounted tyres



Figure 13: Documents



Figure 14: Additional tyres



Figure 15: Navigation



Figure 16: Misc.



Figure 17: Misc.



Figure 18: Misc.



Figure 19: Misc.



Figure 20: Misc.



Figure 21: Misc.



Figure 22: Misc.

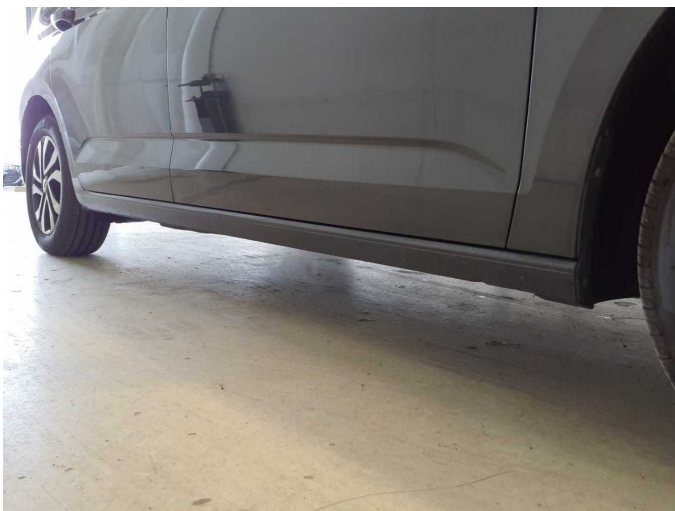


Figure 23: Misc.



Figure 24: Misc.



Figure 25: Misc.



Figure 26: Misc.



Figure 27: Misc.



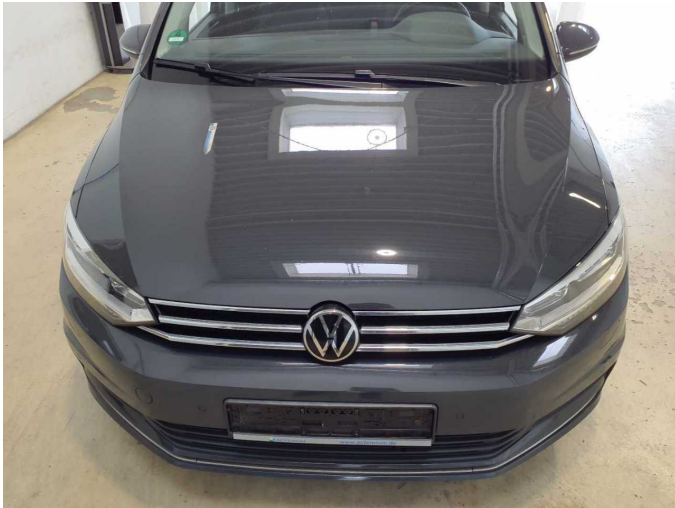
Figure 28: Misc.



Damage 2: Door - front left side: Door (Verkleidung oben) - Soiled - Clean



Damage 2: Door - front left side: Door (Verkleidung oben) - Soiled - Clean



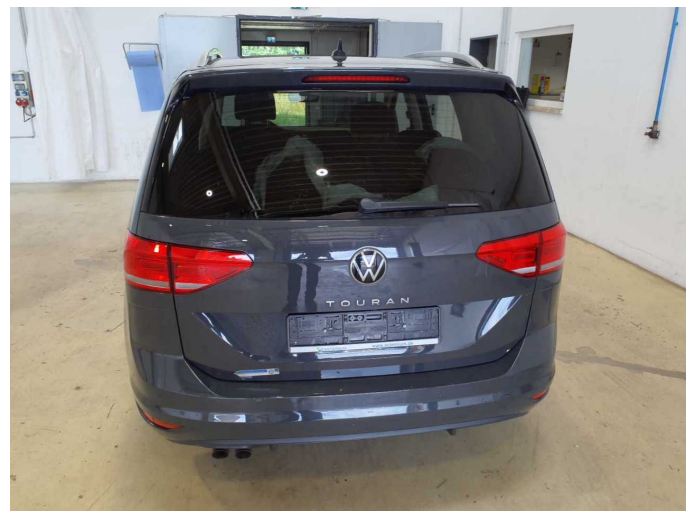
**Damage 3:** Bonnet: Bonnet (Zusätzlich Steinschläge) - dent(s) - Smooth repair work



**Damage 3:** Bonnet: Bonnet (Zusätzlich Steinschläge) - dent(s) - Smooth repair work



**Damage 3:** Bonnet: Bonnet (Zusätzlich Steinschläge) - dent(s) - Smooth repair work



**Damage 4:** Boot lid / rear door: Boot lid - Scratch(es) - Smart repair



**Damage 4:** Boot lid / rear door: Boot lid - Scratch(es) - Smart repair



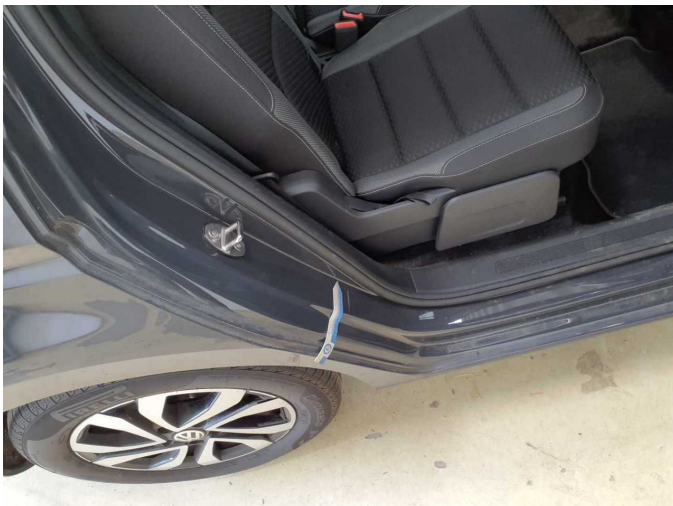
**Damage 5:** Front bumper: Front bumper - Scratch(es) - Smart repair



**Damage 5:** Front bumper: Front bumper - Scratch(es) - Smart repair



**Damage 6:** Side panel - rear right side: Sill - Scratch(es) - Smart repair



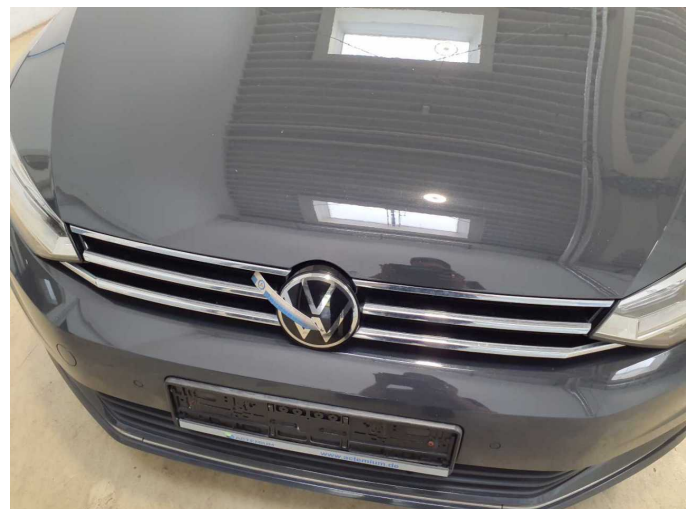
**Damage 6:** Side panel - rear right side: Sill - Scratch(es) - Smart repair



**Damage 7:** Instrument panel: Air nozzle - centre (Hinten) - Broken / torn - Replace



**Damage 7:** Instrument panel: Air nozzle - centre (Hinten) - Broken / torn - Replace



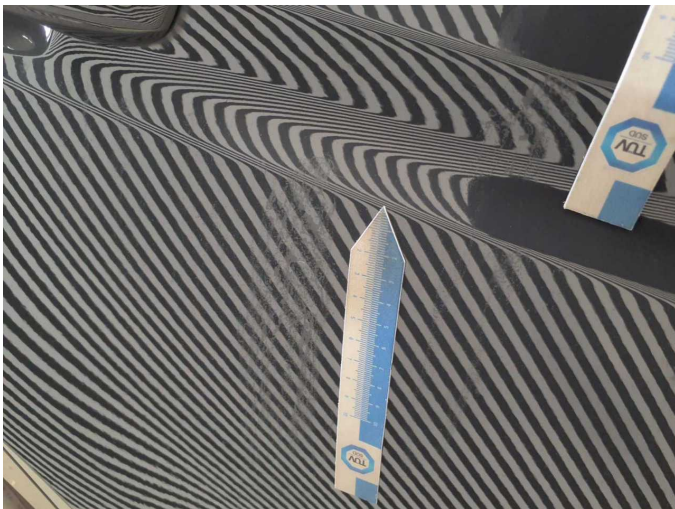
**Damage 8:** Bonnet: Emblem - Broken / torn - Replace



**Damage 8:** Bonnet: Emblem - Broken / torn - Replace



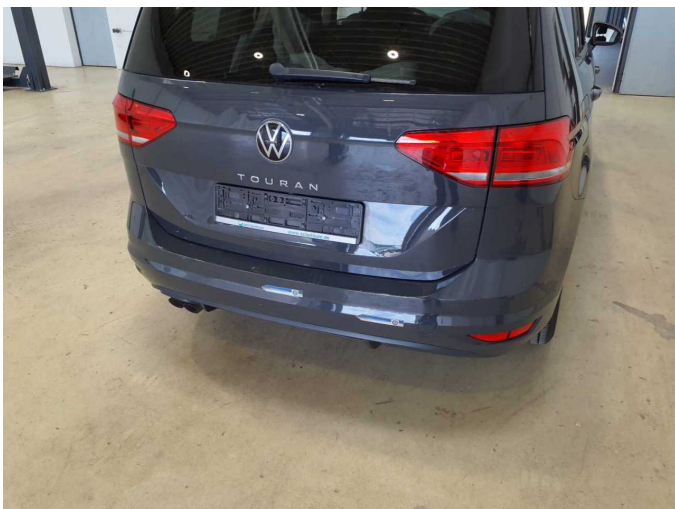
**Damage 9:** Door - rear right side: Door (Anätzung) - Paint defect - Repair and paint



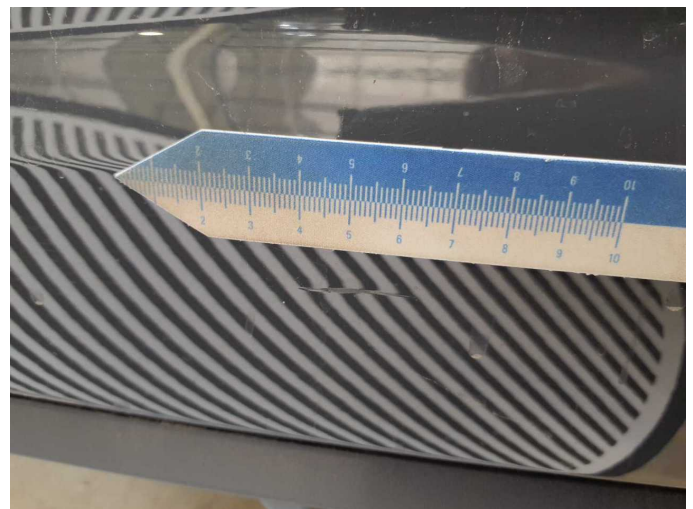
**Damage 9:** Door - rear right side: Door (Anätzung) - Paint defect - Repair and paint



**Damage 9:** Door - rear right side: Door (Anätzung) - Paint defect - Repair and paint



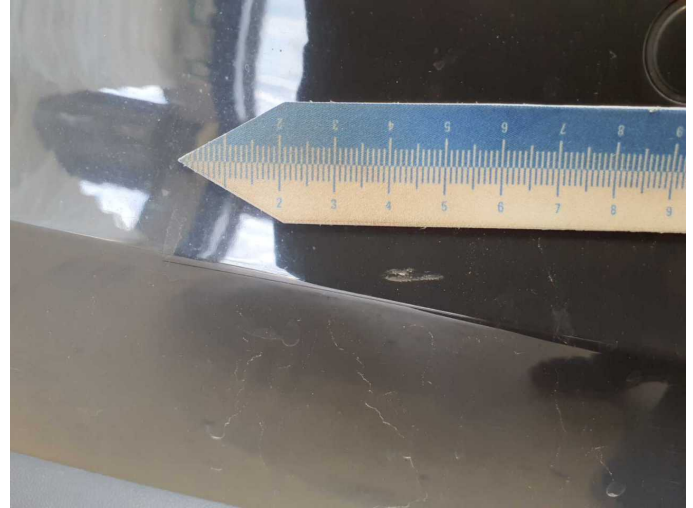
**Damage 10:** Rear bumper: Rear bumper - Dent / paintcoat damage - Repair and paint



**Damage 10:** Rear bumper: Rear bumper - Dent / paintcoat damage - Repair and paint



**Damage 10:** Rear bumper: Rear bumper - Dent / paintcoat damage - Repair and paint



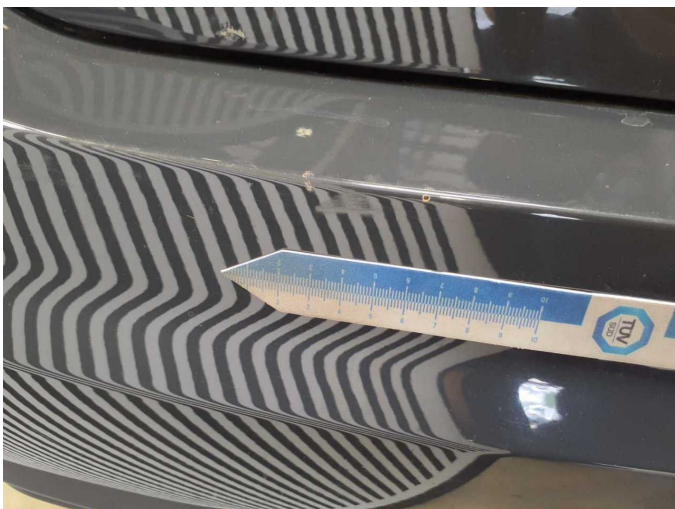
**Damage 10:** Rear bumper: Rear bumper - Dent / paintcoat damage - Repair and paint



**Damage 10:** Rear bumper: Rear bumper - Dent / paintcoat damage - Repair and paint



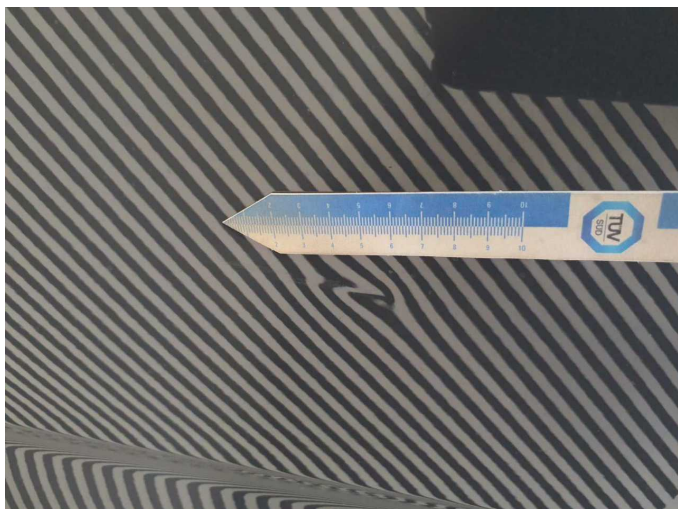
**Damage 10:** Rear bumper: Rear bumper - Dent / paintcoat damage - Repair and paint



**Damage 10:** Rear bumper: Rear bumper - Dent / paintcoat damage - Repair and paint



**Damage 11:** Door - rear left side: Door - Deformed - Repair and paint



**Damage 11:** Door - rear left side: Door - Deformed - Repair and paint