

## Expertise

Protocol number: 45528568  
Order No. / Reference: 26286937  
Inspection date: 12 May 2026

Manufacturer: Audi

Model: Q4 e-tron 50 quattro

VIN: WAUZZZFZ2NP049574



### Vehicle details

#### Manufacturer / Type / Model / Equipment

Audi Q4 e-tron 50 quattro

**Vehicle Identification number** WAUZZZFZ2NP049574

**Mileage (Read)** 111,483 km

**First registration** 2 Aug 2022

**Number of holders** 1

**Power / Engine displacement** 77 kw / 0 ccm

**Fuel type / Cylinder** Electric / 0

**Gearbox / Number of gears** Direct drive / 1

**Type of drive** All-wheel drive

**Type of vehicle** SUV

**Colour / colour code** Mythossschwarz Metallic

**Doors / Seats** 5 / 5

**Upholstery type** Cloth

**Colour of upholstery** Black-Grey

**readiness to drive** Roadworthy



## Vehicle details

<b>Maintenance booklet / proof</b>	digital proof / complete	<b>Next maintenance in</b>	1 Monat(e)
<b>Last service on / at</b>	03/2026 at 109,975		
<b>Key is / should be</b>	2 / 2	<b>FZG documents</b>	ZB#2 (B) was available (copy), ZB#1 (S) was not available.
		<b>Letter No.</b>	GM617442
<b>Previous damage / Accident</b>	None detectable	<b>Repainting</b>	None detectable
<b>Inspection conditions</b>	sufficient	<b>Lifting equipment / pit</b>	yes
<b>Test drive</b>	Not performed	<b>Engine function test</b>	Performed
<b>readiness to drive</b>	Roadworthy		
<b>Manufacturer key number/ type code number</b>	0588 / BZV 00030		
<b>Emission standard</b>	2017/1151;WLTP;reine Elektrofz	<b>fine dust sticker</b>	
<b>Permitted total weight</b>	2,720 kg	<b>Empty weight</b>	

## Tyres

### Mounted tyres

#	Tyre size	Type of tyre	Manufacturer	Tread depth
1)	235/55 R19 101T	Winter tyres on Light alloy	Goodyear	8mm / 8mm
2)	255/50 R19 103T	Winter tyres on Light alloy	Goodyear	7mm / 7mm

### Additional tyres

#	Tyre size	Type of tyre	Manufacturer	Tread depth
1)	235/50 R20 100T	Summer tyres on Light alloy	Bridgestone	5mm / 5mm
2)	255/45 R20 101T	Summer tyres on Light alloy	Bridgestone	5mm / 5mm

**Legend: Tread depth information for the left tire is listed first, for the right tire it is listed second on the axle in the direction of travel.**

TÜV SÜD Auto Partner GmbH  
Gutenbergstraße 13  
70771 Leinfelden-Echterdingen

Inspection location  
Hartmann Fleet Professionals GmbH  
Leerenstraße 25  
29683 Bad Fallingbommel



## Equipment



## Standard equipment

- Airbag for driver and front passenger (with front passenger airbag deactivation)
- Acoustic vehicle warning system (generating a warning tone to increase traffic safety for pedestrians and cyclists)
- Anti-lock braking system (ABS)
- Audi connect Emergency Call and Service (In the event of a serious accident, an automatic emergency call is triggered to the Audi emergency call center. Using the automatically transmitted vehicle information, help can be organized as quickly as possible. Even in the event of a breakdown or minor accident, immediate assistance is available via the online breakdown call and the Audi damage service. Includes the following services: - legal emergency call - Audi connect emergency call - online breakdown call - Audi damage service)
- Evasive Steering Assist and Turning Assist (The Evasive Steering Assist can help the driver steer the vehicle around an obstacle in an evasive situation deemed critical. If the driver actively avoids the obstacle after the acute warning, the Evasive Steering Assist supports them by selectively braking the wheels and applying a small steering torque to correct the steering angle.)
- On-board tools (in the luggage compartment)
- Third brake light (in LED technology)
- Fabric headliner
- Decorative insert in black haptic lacquer (for inserts in the instrument panel; accent surfaces in the instrument panel and trim in the center console in silver effect lacquer; haptic lacquer consists of approx. 50 % aus renewable raw materials.)
- Electronic Stability Control (ESC)
- Chassis: Comfort chassis (with balanced tuning, for very good ride comfort combined with good driving dynamics)
- Transmission: 1-speed direct drive
- rear window wiper
- Interior lighting (LED roof module front/rear - trunk light left - illuminated glove compartment - storage compartment center console front)
- Interior mirror dimming
- i-Size child seat attachment on the front passenger side, i-Size and Top Tether on the outer rear seats (standard mounting for the practical attachment of i-Size and ISOFIX child seats; including additional attachment points (Top Tether)).)
- Comfort stationary climate control (Comfort stationary climate control cools or heats the interior to the desired temperature before driving. This ensures a very high level of climate comfort right from the moment you get into the vehicle. If other optional features such as seat heating and ventilation or glass surface heating have been selected, these can also be activated before driving. The functions can be conveniently programmed and activated via MMI touch in the vehicle, as well as conveniently switched on via the myAudi app.)
- Airbag: Front side airbags, with head airbag and interaction airbag in the front (front side airbags integrated into the seatbacks. With head airbag system: deploys in front of the side window area and can thus protect front and outer rear passengers in the event of a side impact.)
- Audi connect Remote & Control for MMI basic (The services of Audi connect Remote & Control connect the vehicle to your smartphone. The myAudi app allows you to remotely access the vehicle to control functions such as charging or pre-conditioning. Audi connect Remote & Control for MMI basic includes the following services: - Remote charging control - Remote climate control)
- Audi pre sense front (within system limits, uses a front radar to detect the area in front of the vehicle and warns the driver with visual and acoustic signals to indicate a potential hazard from vehicles ahead, whether moving or stationary – pedestrian and cyclist detection registers, within system limits, when a pedestrian or cyclist is moving on or crossing the road. The system then warns the driver with an acoustic and visual signal)
- Electrically adjustable/heated exterior mirrors (left aspherical, right convex - housing painted in body color - with integrated LED side indicators - including heated windscreen washer nozzles)
- Aluminum roof rails
- Tachometer
- Rear parking aid (supports reversing by acoustically indicating the distance to a detected object behind the vehicle; measured by discreetly integrated ultrasonic sensors in the bumper, active when reverse gear is engaged)
- Front and rear floor mats (made of velour in black)
- Adjustable speed limiter (allows individual limiting of the maximum speed from 30 km/h, e.g., within built-up areas. When the set limit is reached, the vehicle's speed is smoothly reduced. Operation is via a separate steering column lever. The set maximum speed is displayed in the driver information system. The limit can be overridden at any time by using kick-down.)
- Automatic climate control (electronically regulates air temperature, quantity and distribution - sun position-dependent control - automatic recirculation control - dust and odor separating allergen filter - separate defroster button for faster defrosting of the front and side windows)
- Comfort center armrest in the front (adjustable in tilt and longitudinally movable)
- Headrests (5) (height adjustable front and rear)
- Combo 2 (EU) charging socket (charging access to the high-voltage battery via Combined Charging System Type 2 (CCS 2), i.e., a combined AC and DC charging access. The DC charging access enables high-power charging. - Charging access via AC (Mode 2 and Mode 3) - Charging access via DC charging stations (Mode 4))
- LED rear lights (indicator, brake, tail, reversing and rear license plate lights in LED technology)



- Mode 3 charging cable for public charging (charging cable for charging at public AC charging stations (Type 2). The cable connects the charging station to the vehicle's AC charging port. A current of up to 32 A can be transmitted per phase.)
- Steering wheel: Double-spoke leather steering wheel with multifunction (For convenient operation of the extensive standard and optional infotainment features, the steering wheel is equipped with multifunction buttons with touch control. Height and reach of the steering wheel are manually adjustable.)
- Package: Advanced (Advanced bumper with bottom line all around in contrasting paint finish Manhattan Grey Metallic - Wheels, 5-W-spoke Aero, graphite grey, gloss turned, 8.0 J x 19, tires 235/55 / 255/50 R 19)
- Package: Gloss package (horizontal window trim strips in anodized aluminum)
- Upholstery: Fabric Index
- Wheel: Tire pressure monitoring system (visual and audible warning in case of pressure loss in one or more wheels - display in the driver information system)
- Radio: MMI Radio (high-resolution 10.1-inch color display including MMI touch operation - 10.25-inch digital instrument cluster - Audi music interface with 2 USB-C ports - Bluetooth interface (hands-free calling and audio streaming) - 4 passive speakers - AM/FM phase diversity - 1 x USB Type-A interface for charging external devices - DAB+ - speed-dependent volume adjustment - voice control system with natural language for controlling infotainment and vehicle functions - WLAN hardware)
- Lane Departure Warning (within system limits, helps prevent unintentional lane departures. If the system is activated and ready, and the driver has not used the turn signal, the Lane Departure Warning helps prevent crossing detected lane markings by making corrective steering interventions. Additional steering wheel vibration can be set at the driver's request. Operating range from approximately 60 to a maximum of 250 km/h)
- Central locking
- LED headlights (daytime running lights - low beam - high beam - position lights - turn signals - tourist lights (adjustable light pattern for right- or left-hand traffic) - headlight range control (automatic compensation for vehicle load))
- Light and rain sensor
- Model name and performance/technology lettering
- On-board charger up to 11 kW (AC) (The Audi e-tron can be charged with a maximum alternating current (AC) charging capacity of up to 11 kW as standard. The on-board charger integrated into the vehicle sets the AC charging capacity, which is limited to 11 kW. The AC/DC converter converts alternating current (AC) to direct current (DC) during the charging process to charge the high-voltage battery.)
- Progressive steering (steering with variable steering ratio dependent on steering angle, as well as speed-dependent steering assistance - increasing driving dynamics and driving comfort through more direct steering behavior (e.g. on winding country roads or when turning) and through reduced steering effort (e.g. when parking and maneuvering))
- Seats: Standard front seats (with manual adjustment of seat height, seat longitudinal position, backrest angle, headrest height and seat belt height)
- Seats: Rear seat backrest foldable (split, in a 40:60 ratio or fully foldable)
- Seats: Front seats manually adjustable
- 12-volt socket (12-volt on-board power socket and 2 x USB-C ports for charging devices)
- First aid kit with warning triangle (warning triangle - first aid kit - 2 high-visibility vests)
- Electronic immobilizer
- Green heat-insulating glazing (green tinted - for rear window, door and side windows - rear window heated, with timer)



## Extra equipment

- Towing device (The mechanically swiveling towing device can be conveniently locked and unlocked via a release mechanism - ball head mechanically swiveling, with electric release - ball rod and head made of forged steel - trailer stabilization via the electronic stability control (ESC) - the integrated swiveling system socket allows continuous operation of electrical devices in the trailer or caravan while driving)
- Chassis: Sport chassis (The sport chassis, with a 15 mm lower ride height compared to the standard chassis and more dynamic spring and damper tuning, uses a McPherson strut axle with lower wishbones, shock absorbers, coil springs, subframe and stabilizer bar at the front. At the rear, a 4-link axle with separate spring and damper arrangement, shock absorbers, coil springs, subframe and stabilizer bar is used.)
- Steering wheel: Double-spoke leather sports steering wheel, flattened at the top and bottom, with multifunction controls and paddle shifters (The double-spoke leather sports steering wheel, flattened at the top and bottom, impresses with its sporty look and feels good in the hand. The height and reach of the steering wheel are manually adjustable.)
- Package: Dynamic package (Audi drive select - progressive steering)
- Package: Function package (storage and luggage compartment package, consisting of: - storage nets on the back of the front seat backrests - comfort cupholders in the front with clamping elements - lockable glove compartment - luggage compartment net (spider) - 12-volt socket in the luggage compartment - variable loading floor (folding 40:60) including luggage compartment cover that can be stowed under the loading floor - removable luggage compartment partition net for attachment to the body or fixing to the folding rear seat backrest)
- Package: Climate Control Package (The 3-zone automatic climate control electronically regulates the air temperature, volume, and distribution. An additional function is sun-position-dependent control. The temperature setting for the driver and front passenger can be adjusted separately. Separate temperature control and air vents are available in the rear. The 3-zone automatic climate control features automatic recirculation in combination with a dust- and odor-removing cabin air filter.)
- Package: S line exterior (S line bumpers with bottom line all around in contrasting paint finish Manhattan Grey Metallic - Wheels, 5-Y-spoke, 8.0 J / 9.0 J x 20, tires 235/50 / 255/45 R 20 - S line exterior differentiations with S line emblem on the fenders - Sport suspension)
- Panoramic glass roof (The two-part panoramic glass roof has extra-large, tinted glass surfaces. They lend the interior of the Audi Q4 e-tron an exclusive atmosphere and underscore the progressive design of the interior with a pleasant lighting mood. When open, the panoramic glass roof also ensures a refreshing interior climate. An integrated wind deflector reduces wind noise when the roof is open.)
- Audi connect Navigation & Infotainment plus (e-tron route planner - Online points of interest - On-street parking - Online traffic information - Hazard information - Online traffic sign information - Weather information - Wi-Fi hotspot - Online news - User profiles - Navigation with Google Satellite Map - Online search for navigation destinations - Online voice input - Online traffic information plus - Highly detailed 3D city display - Online radio - Hybrid radio - Amazon Alexa integration)
- High Beam Assist (The High Beam Assist uses a camera system to automatically detect oncoming traffic, vehicles ahead, and urban light sources within the system's limitations. Based on this information, the high beams are automatically switched on or off. The system thus improves the driver's visibility and increases comfort.)
- Paint finish: Metallic
- Navigation: MMI Navigation plus (11.6-inch MMI Navigation plus with MMI touch including Audi connect Navigation & Infotainment - camera-based traffic sign recognition - 10.25-inch Audi virtual cockpit with two display options "Classic" and "Sport" - voice control)
- Package: Assistance Package Plus (Adaptive Cruise Control, the system uses a radar sensor to detect vehicles ahead within the system's limits and maintains the set speed and distance as constant as possible within the control range. - Speed limiter - Parking Assist Plus, supports the driver when parking and maneuvering forwards and backwards with acoustic signals and visual display with virtual lane guidance. - Rearview camera)
- Package: Interior with sport seats in black fabric (front sport seats with integrated headrests, manual adjustment of seat height, seat fore/aft position, seat tilt, backrest tilt and belt height - fabric upholstery in black/silver, seat center panels in black/silver fabric - double-spoke leather steering wheel with multifunction controls, with chrome-look trim - door sill trims with aluminum inlays - black haptic-finish decorative inlays for instrument panel inserts - glossy black accent surfaces - aluminum look in the interior - steel gray fabric headliner)
- Package: Comfort package (electrically adjustable, heated and folding exterior mirrors, automatically dimming on both sides, with integrated LED turn signals and curb view function for the passenger-side exterior mirror, aspherical mirror glass on the left, convex on the right, including heated windshield washer nozzles - automatically dimming, frameless interior mirror - 4-way lumbar support for the front seats - projection lights in the exterior mirrors)
- Package: Safety package plus (lane change warning with exit warning and rear cross traffic assist - Audi pre sense basic and Audi pre sense rear)
- Wheels: Light alloy wheels (4 pieces) in 5-Y-spoke design, graphite grey, polished (front size: 8.0 J x 20 with 235/50 R 20 tires, rear size: 9.0 J x 20 with 255/45 R 20 mobility tires)
- Radio accessories: Audi sound system (8 speakers including center speaker and subwoofer, 6-channel amplifier with a total output of 180 watts)



- Front seat heating (heats seat and backrest center section (standard seats in fabric), otherwise seat and backrest center section as well as seat side bolsters - individually adjustable in 3 stages for driver and front passenger via direct selection button on the climate control unit)
- Heat pump (Within the system limits, the heat pump uses the waste heat from the electric drive components and the outside air to heat the vehicle interior. This supports the provision of the required heating power at low outside temperatures. The electrical energy not needed for heating can, for example, also have a positive effect on the vehicle's range.)
- Glazing: Windshield in climate comfort/acoustic glazing, wirelessly heated (The heated windshield in climate comfort and acoustic glazing prevents fogging and assists in defrosting the glass surface. It features a heated wiper blade rest. The windshield has no wires that obstruct the view. An additional advantage is the infrared-reflecting property of the windshield, which reduces the heating of the interior in sunlight. The windshield does not have a viewing window for telepass devices.)

### Brief expert findings

Documents submitted	At the time of the inspection, the vehicle registration certificate Part 2 (title) was available, but the vehicle registration certificate Part 1 (document) was not. (Copy)
VIN comparison	The vehicle identification number (VIN) was read from the vehicle and its conformity with the submitted documents was confirmed by the undersigned during the inspection.
Inspection	The inspection conditions were sufficient for the assessment of the vehicle. Lifting equipment and/or a pit were available for examining the vehicle.
Test drive	No test drive/shunting maneuver was carried out during the inspection of the vehicle.
Engine function test	An engine test run was performed.
readiness to drive	The vehicle was roadworthy at the time of inspection.

### Value reducing factors

No.	Component group	Description
1	Boot lid / rear door	Boot lid - Scratch(es) - Smart repair
2	Rear bumper	Rear bumper - Scratch(es) - Smart repair
3	Door - front right side	Door - Scratch(es) - Smart repair
4	Engine	Engine cover - top / cover - Damage caused by marten / rodent - Replace
5	2nd wheel set	1 alloy rim - Scratch(es) - Loss in value
6	Boot lid / rear door	Boot lid (Leuchte) - Scratched - Replace

### Wear and tear

No.	Component group	Description
1	Mudguard - right side	Mudguard - right side - Scratch(es) - No deduction
2	Door - front left side	Door edge - Scratch(es) - No deduction
3	Front bumper	Front bumper - Stone chips - No deduction
4	Door - front right side	Door - dent(s) - No deduction
5	Door - rear right side	Door - dent(s) - No deduction

The vehicle shows signs of wear and tear commensurate with its age and use.



## Order/Scope of Order

An order was placed to prepare a sales report for the described vehicle. This report includes the following:

- Description of key vehicle information
- Documentation of equipment features  
*(Delivery by third-party service providers)*
- Documentation of damage, defects, missing parts
- Documentation of prior damage, unrepaired prior damage, repainting
- A brief visual or functional inspection of the equipment details, if possible.  
*(Functional testing of driver assistance systems is not included in the scope of services!)*
- a photographic documentation of the vehicle

## Basis for the order

This product is based on the guidelines for vehicle returns and valuations published by Alphabet Fleet GmbH. The expert makes the specific findings in each individual case objectively, within the framework of the prescribed standards, based on their own expertise.

The vehicle inspection takes place in a fully assembled, unassembled state.

Damage or defects that can only be detected during disassembly/diagnostic work or through further investigation remain within the realm of prognostic risk. An increased risk exists due to concealed defects caused by fraudulent misrepresentation and which were not identifiable by the expert.

Damage or defects resulting from normal use or wear and tear of the vehicle will be accepted in accordance with the applicable standard.

There was no explicit identification or monetary consideration of the expected features within the product.

Features which, in their nature and extent, slightly exceed normal use but do not constitute unacceptable damage, will be documented and indicated as signs of wear, if applicable.

Damage or defects that, according to the applicable standard, can no longer be attributed to normal use or wear and tear are listed under "Value Reducing Factors" in the product description.

Depending on the product specification, a monetary ID can be provided. If this takes place, the costs can be 100% or pro rata depending on the vehicle's age and mileage.

## Previous damages

No apparent prior damage that had been repaired could be found on the vehicle.

## Comments

Der montierte Winterradsatz ist kein Bestandteil der Ausstattung.



Figure 1: Diagonal front (left)



Figure 2: Diagonal front (right)



Figure 3: Diagonal rear (left)



Figure 4: Diagonal rear (right)



Figure 5: Interior - front



Figure 6: Interior - rear



Figure 7: Instrument cluster



Figure 8: Instrument panel



Figure 9: Interior 360° view

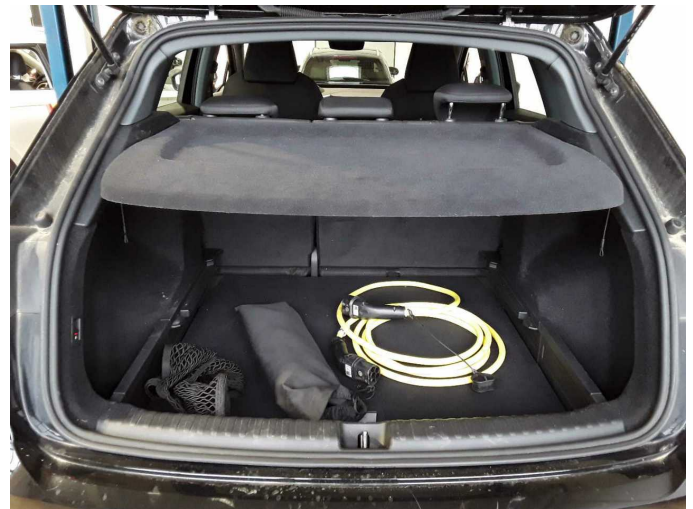


Figure 10: Cargo area

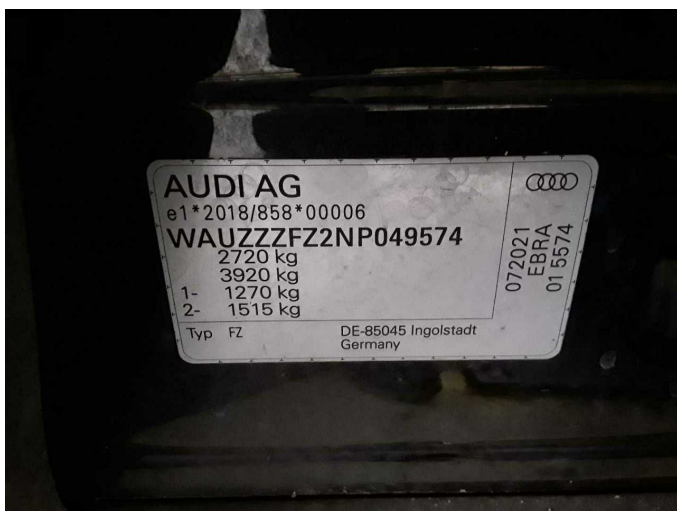


Figure 11: VIN



Figure 12: Mounted tyres





Figure 19: Misc.



Figure 20: Misc.



Figure 21: Misc.



Figure 22: Misc.

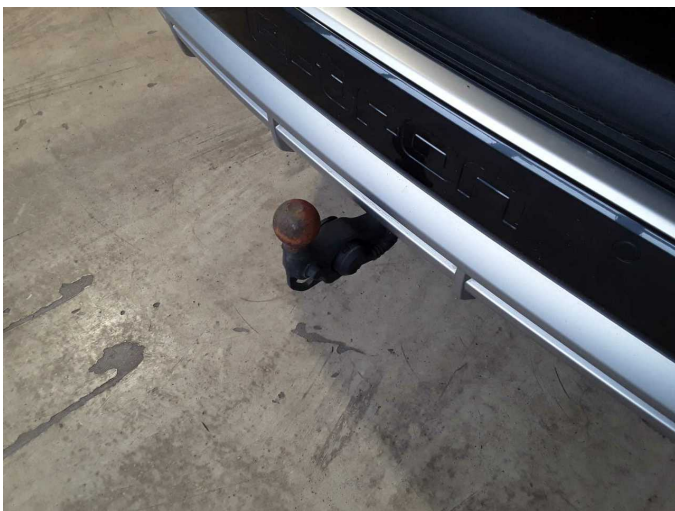


Figure 23: Misc.



Figure 24: Misc.



Figure 25: Misc.



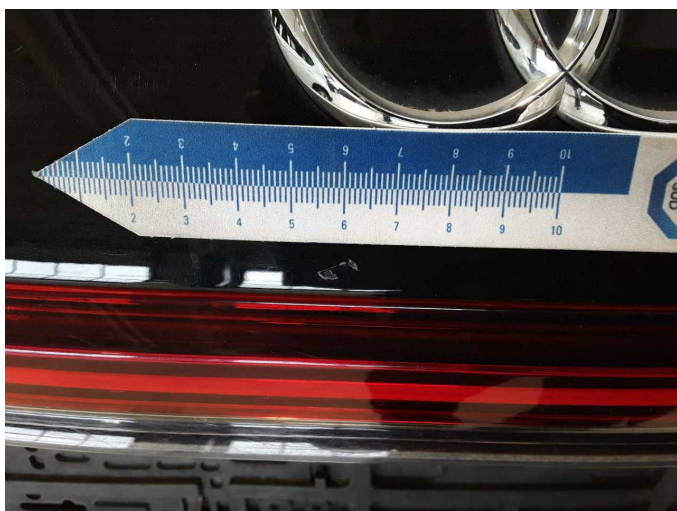
Figure 26: Misc.



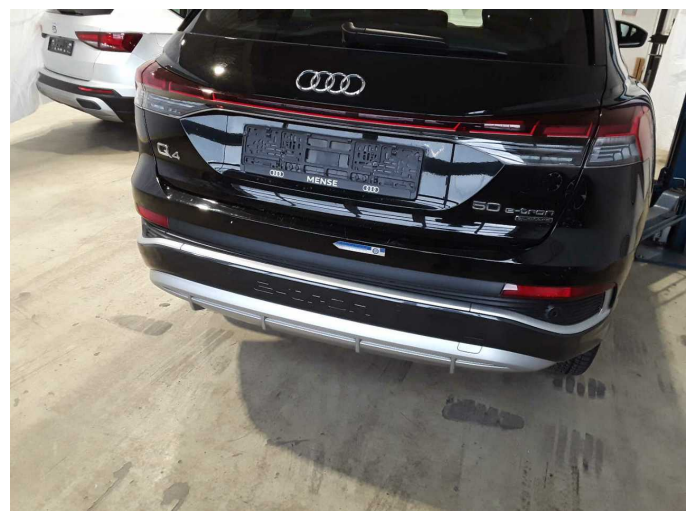
Figure 27: Misc.



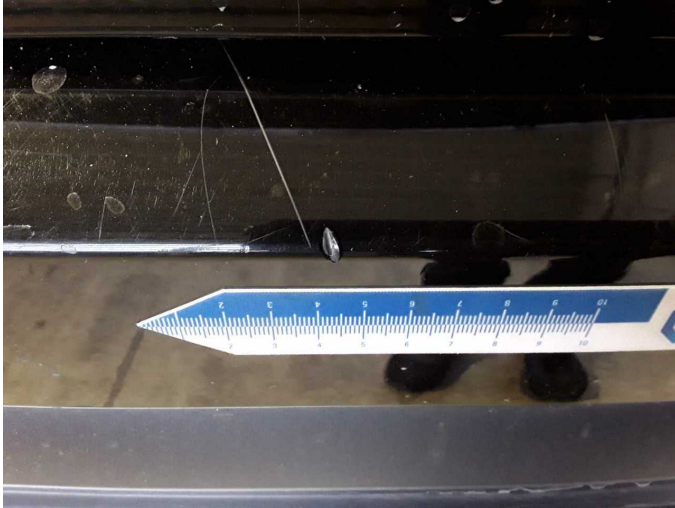
Damage 1: Boot lid / rear door: Boot lid - Scratch(es) - Smart repair



Damage 1: Boot lid / rear door: Boot lid - Scratch(es) - Smart repair



Damage 2: Rear bumper: Rear bumper - Scratch(es) - Smart repair



**Damage 2:** Rear bumper: Rear bumper - Scratch(es) - Smart repair



**Damage 3:** Door - front right side: Door - Scratch(es) - Smart repair



**Damage 3:** Door - front right side: Door - Scratch(es) - Smart repair



**Damage 5:** 2nd wheel set: 1 alloy rim - Scratch(es) - Loss in value



**Damage 5:** 2nd wheel set: 1 alloy rim - Scratch(es) - Loss in value



**Damage 6:** Boot lid / rear door: Boot lid (Leuchte) - Scratched - Replace



**Damage 6:** Boot lid / rear door: Boot lid (Leuchte) - Scratched - Replace



**Damage 6:** Boot lid / rear door: Boot lid (Leuchte) - Scratched - Replace



# Wartungshistorie

(gemäß Auftraggeber Informationen)

Fahrgestellnummer: WAUZZZFZ2NP049574  
Hersteller / Modell: AUDI AUDI Q4 e-tron 50 quattro

Datum	KM-Stand	Beschreibung
11.03.2026	109.975	Kraftstofffilter ern; Reparatur Sonstiges; Systemtest/Eigendiagnose
20.05.2025	88.296	Systemtest/Eigendiagnose
18.11.2024	71.735	Systemtest/Eigendiagnose
01.08.2024	61.819	Bremsbelagfühler ern; Bremse Sonstiges; Bremsflüssigkeit; Bremsflüssigkeit ern; Bremsklötze vorne; Bremsscheiben vorne; Regelwartungsdienst; Reparatur Sonstiges; Wartung Sonstiges