

Expertise

Protocol number: 46095203
Order No. / Reference: 26490256
Inspection date: 22 Jun 2026

Manufacturer: Volvo

Model: XC90 T8 AWD Recharge Geartronic R-Design Edition

VIN: YV1LFH5VDN1832967



Vehicle details

Manufacturer / Type / Model / Equipment

Volvo XC90 T8 AWD Recharge Geartronic R-Design Edition

Vehicle Identification number YV1LFH5VDN1832967

Mileage (Read) 99,754 km

First registration 17 Mar 2022

Number of holders 1

Power / Engine displacement 228 kw / 1,969 ccm

Fuel type / Cylinder Hybr.B/E ext.auf1 / 4

Gearbox / Number of gears Automatic / 8

Type of drive All-wheel drive

Type of vehicle SUV

Colour / colour code Onyx Schwarz-Metallic

Doors / Seats 5 / 7

Upholstery type Alcantara / Leather

Colour of upholstery Black



Vehicle details

Maintenance booklet / proof	digital evidence / incomplete	Next maintenance in	0 Tag(e)
Last service on / at	03/2025 at 71,673 km		
Key is / should be	2 / 2	FZG documents	ZB#2 (B) was available (copy), ZB#1 (S) was not available.
		Letter No.	GF845807
Previous damage / Accident	Detectable	Repainting	Detectable
Inspection conditions	sufficient	Lifting equipment / pit	No
Test drive	Not performed	Engine function test	Performed
Manufacturer key number/ type code number	9101 / BUL 00004		
Emission standard	EURO6;WLTP;AP;PI/CI; M, N1 I	fine dust sticker	
Permitted total weight	2,950 kg	Empty weight	

Tyres

Mounted tyres				
#	Tyre size	Type of tyre	Manufacturer	Tread depth
1)	235/55 R19 105H	Winter tyres on Light alloy	Goodyear	3mm / 3mm
2)	235/55 R19 105H	Winter tyres on Light alloy	Goodyear	6mm / 6mm

Additional tyres				
#	Tyre size	Type of tyre	Manufacturer	Tread depth
1)	275/45 R20 110V	Summer tyres on Light alloy	Continental	4mm / 4mm
2)	275/45 R20 110V	Summer tyres on Light alloy	Continental	5mm / 5mm

Replacement				
Typ	Tyre size	Type of tyre	Manufacturer	Tread depth
	Tirefit	Expiration date 01/2026		

Legend: Tread depth information for the left tire is listed first, for the right tire it is listed second on the axle in the direction of travel.

TÜV SÜD Auto Partner GmbH
Gutenbergstraße 13
70771 Leinfelden-Echterdingen

Inspection location
ARS Altmann AG Automobillogistik
Römerstraße 3
64560 Riedstadt



Equipment



Standard equipment

- ABS - Anti-lock Braking System
- Airbags
- All-wheel drive (AWD)
- Ambient lighting
- Applications on the side windows in high-gloss black
- Armrests with integrated storage compartment and cup holders for the 3rd row of seats (left and right)
- Electrically adjustable exterior mirrors
- Outdoor temperature display
- Hill Descent Control (HDC)
- Hill Start Assist (HSA)
- LED turn signals integrated into the exterior mirrors
- Brake energy recuperation
- City Safety
- Connected Safety
- Roof rails in high-gloss black (integrated)
- Digital Instrumentation
- Drive Mode
- Aluminum insert, metal mesh
- Aluminum door sill plates with Recharge lettering, front (illuminated) and rear
- Electric windows front and rear
- Bottle holder in the luggage compartment
- Cruise control system with variable speed limiter
- Seat belt height adjustment front and rear (2nd row of seats)
- rear window wiper
- Interior lighting
- IntelliSafe Assistant
- ISOFIX mounting for the outer rear seats
- Keyless Start
- Automatic climate control with 4-zone temperature control
- Headrests (7)
- Charging cable Schuko / Type 2 (Mode 2), 4.5 m length
- Cargo area roller blind (semi-automatic)
- Steering wheel: Steering wheel heating
- Steering wheel: Sport leather steering wheel
- Front center armrest including cup holder
- Emergency brake lights
- Electric parking brake
- Upholstery: RDesign nubuck textile/nappa leather, sports seats
- Radio accessories: Smartphone integration Apple CarPlay and Android Auto
- Rain sensor with automatic light function
- Road Edge Detection
- Run-off Road Protection
- Wheels: Tire sealant
- Rear view camera
- Heated windshield washer nozzles
- Headlight cleaning system
- Sensus Connect infotainment system
- Passenger side airbag can be deactivated
- Active safety belts with belt tensioners
- Aluminum loading sill protector in the luggage compartment
- Dashboard and door trim in leather look with contrasting stitching
- Electrically folding exterior mirrors
- Heated exterior mirrors and rear window (automatic)
- Attachment system for carrier bags in the luggage compartment
- Fog sensor for automatic activation of the defroster function
- On-board computer
- third brake light
- CleanZone air quality system with activated carbon filter
- Anthracite headliner
- Roof spoiler
- Tachometer
- Driver Alert - Attention Warning
- Parking assistance, front and rear
- Electronic differential lock
- Electronic stability control
- Automatic emergency braking
- Luggage compartment partition net
- Transmission: 8-speed Geartronic automatic transmission
- Automatic tailgate
- Heated rear window
- Interior and exterior mirrors automatically dimming
- Intelligent driver information system
- IntelliSafe Surround
- Keyless Drive
- Child lock
- Air conditioning for the 3rd row of seats
- Headrests of the 2nd row of seats can be folded down (electrically)
- Steering wheel adjustable for height and reach
- Steering wheel: Multifunction buttons on the steering wheel
- Illuminated makeup mirror for driver and front passenger
- Sensus navigation system
- Oncoming Lane Mitigation
- Pollen filter
- Radio: Sensus Connect infotainment system with high-performance sound
- Radio accessories: Two USB-C ports on the back of the center console
- Tire pressure monitoring system
- Road Sign Information (RSI) - Traffic Sign Recognition
- Wheels: 20" 5-spoke alloy wheels, sport design, diamond cut/black
- Rear seat backrests can be folded down in a 60/40 split or completely.
- Whiplash Protection System (WHIPS)
- Speed-sensitive power steering
- Seats: Adjustable (electric) leg rest for driver and front passenger seats
- Seats: Driver and passenger seats electrically adjustable



- Safety braking system with disc brakes all around (internally ventilated)
- Seats: Third row of seats (7-seater)
- Seats: Driver and front passenger seats are height-adjustable (electrically)
- Seats: Heated front seats
- Sport exterior mirrors in high-gloss black
- Sport front grille with horizontal struts and surround in high-gloss black
- Storage compartment under the cargo floor
- subwoofer
- Textile floor mats
- Glazing: Colored glazing
- Full LED headlights "Thor's Hammer" ACTIVE HIGH BEAM
- Preparation for Trailer Stability Assist (TSA)
- Immobiliser
- Central locking system with two remote controls and integrated emergency keys

Extra equipment

- Package: Xenium Package (Panoramic glass sunroof with lifting function and integrated, continuously adjustable sunshade (electric) - Sun blinds for the rear side windows (integrated) - High Performance Sound Pro audio system by Harman/Kardon: - 600 watts of power - 14 speakers - Fresh Air Subwoofer - Dirac Unison sound optimization - Enhanced air quality system with fine dust filtration according to PM2.5 air quality standard)

- Seats: Lumbar support (4-way electrically adjustable) for driver and front passenger seats
- Sun blinds for the rear side windows (integrated)
- Sport front and rear apron
- Sport pedals
- Start/Stop technology
- Power socket
- Textile floor mat for the 3rd row of seats
- First aid kit and warning triangle
- Lashing eyes in the luggage compartment (foldable)
- Volvo On Call with Wi-Fi hotspot
- Warning tone/indicator when seat belts are not fastened (for all seats)

- Paint finish: Metallic paint
- Seats: Child seat integrated in the middle rear seat (2nd row).
- Windscreen, heater

Brief expert findings

Documents submitted	At the time of the inspection, the vehicle registration certificate Part 2 (title) was available, but the vehicle registration certificate Part 1 (document) was not. (Copy)
VIN comparison	The vehicle identification number (VIN) was read from the vehicle and its conformity with the submitted documents was confirmed by the undersigned during the inspection.
Inspection	The inspection conditions were sufficient for the assessment of the vehicle. No lifting equipment or pit was available for inspecting the vehicle. Therefore, inspection of the vehicle's underside was only possible to a limited extent.
Test drive	No test drive/shunting maneuver was carried out during the inspection of the vehicle.
Engine function test	An engine test run was performed.



Value reducing factors

No.	Component group	Description
1	Equipment	Tirefit filler - Expired - Replace
2	Instrument panel	Indicator light (Reifendruck) - on - Perform diagnosis
3	Door - front left side	Door edge - Scratch(es) - Smart repair
4	Side panel - rear left side	Wheel well extension - Scratch(es) - Smart repair
5	2nd wheel set	1 tyre (Sommerreifen) - Damaged - Replace
6	2nd wheel set	1 tyre (Sommerreifen) - Damaged - Replace
7	2nd wheel set	1 alloy rim - Scratched - Loss in value
8	2nd wheel set	1 alloy rim - Scratched - Loss in value
9	Misc.	Inspection / maintenance - Due - Perform
10	Door - rear right side	Door - Dent / paintcoat damage - Paint
11	Rear bumper	Rear bumper - Scratch(es) - Paint

Wear and tear

No.	Component group	Description
1	Front bumper	Front bumper - Stone chips - No deduction
2	Bonnet	Bonnet - Stone chips - No deduction
3	Vehicle glazing	Windscreen - Stone chips - No deduction
4	Mudguard - left side	Mudguard - left side - Scratch(es) - No deduction
5	Boot lid / rear door	Boot lid - Scratch(es) - No deduction
6	Side panel - rear left side	Side panel - dent(s) - No deduction

The vehicle shows signs of wear and tear commensurate with its age and use.

Previous damages

No.	Previous damage	Extent of damage (Net)
1	Side right, Professionally repaired, Invoice of repair done Non-existent, from 17 Feb 2024	2.021,56 €

Repainting

No.	Repainting
1	Door - rear right side, Professionally carried out, Invoice of repair done Non-existent

Paint coat thickness measurement

Door - rear right side	183 µm
------------------------	--------

Order/Scope of Order

An order was placed to prepare a sales report for the described vehicle. This report includes the following:

- Description of key vehicle information
- Documentation of equipment features
(Delivery by third-party service providers)
- Documentation of damage, defects, missing parts
- Documentation of prior damage, unrepaired prior damage, repainting
- A brief visual or functional inspection of the equipment details, if possible.
(Functional testing of driver assistance systems is not included in the scope of services!)
- a photographic documentation of the vehicle



Basis for the order

This product is based on the guidelines for vehicle returns and valuations published by Alphabet Fleet GmbH. The expert makes the specific findings in each individual case objectively, within the framework of the prescribed standards, based on their own expertise.

The vehicle inspection takes place in a fully assembled, unassembled state.

Damage or defects that can only be detected during disassembly/diagnostic work or through further investigation remain within the realm of prognostic risk. An increased risk exists due to concealed defects caused by fraudulent misrepresentation and which were not identifiable by the expert.

Damage or defects resulting from normal use or wear and tear of the vehicle will be accepted in accordance with the applicable standard.

There was no explicit identification or monetary consideration of the expected features within the product.

Features which, in their nature and extent, slightly exceed normal use but do not constitute unacceptable damage, will be documented and indicated as signs of wear, if applicable.

Damage or defects that, according to the applicable standard, can no longer be attributed to normal use or wear and tear are listed under "Value Reducing Factors" in the product description.

Depending on the product specification, a monetary ID can be provided. If this takes place, the costs can be 100% d or pro rata depending on the vehicle's age and mileage.

Previous damages

Professionally repaired previous damages were found at the vehicle.

Comments

Der montierte Winterradsatz ist kein Bestandteil der Ausstattung.



Figure 1: Diagonal front (left)



Figure 2: Diagonal front (right)



Figure 3: Diagonal rear (left)



Figure 4: Diagonal rear (right)



Figure 5: Interior - front



Figure 6: Interior - rear



Figure 7: Instrument cluster



Figure 8: Instrument panel



Figure 9: Interior 360° view



Figure 10: Cargo area



Figure 11: VIN



Figure 12: Mounted tyres

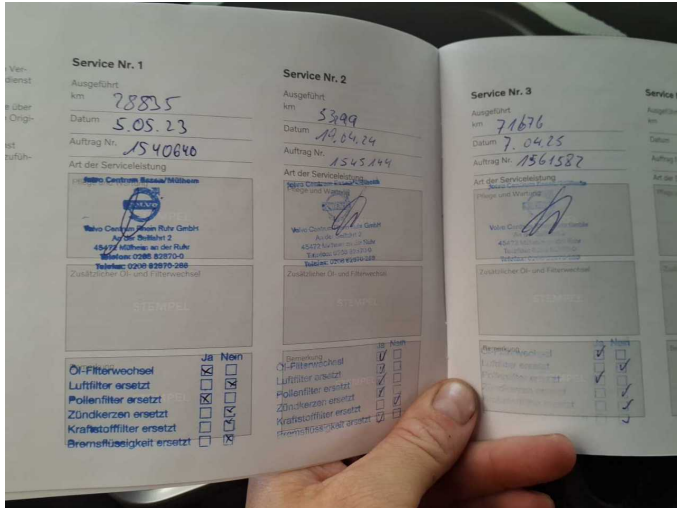


Figure 13: Documents

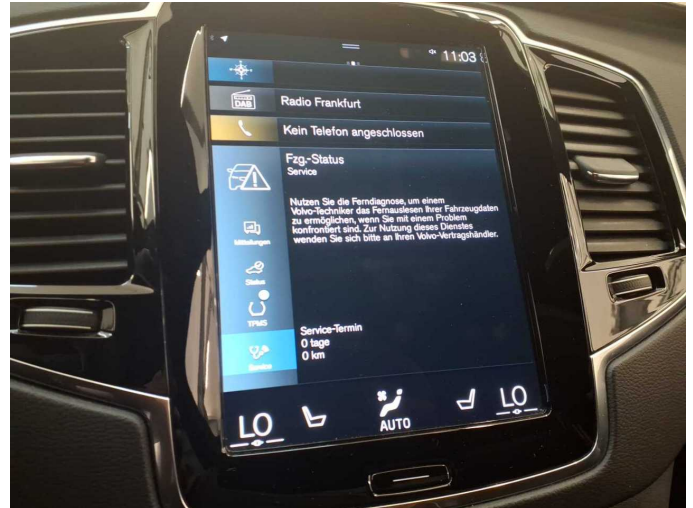


Figure 14: Documents



Figure 15: Documents



Figure 16: Additional tyres

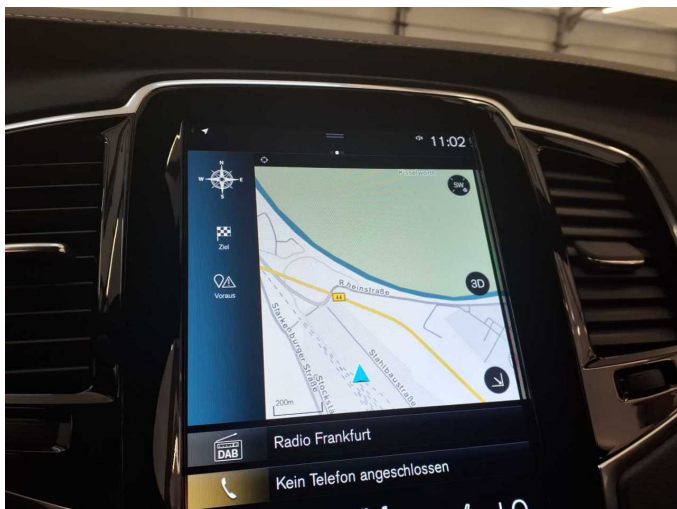


Figure 17: Navigation

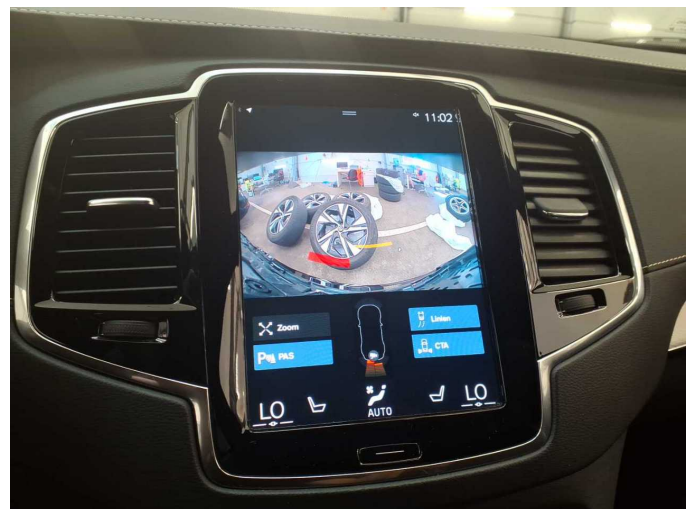


Figure 18: Misc.



Figure 19: Misc.



Figure 20: Misc.

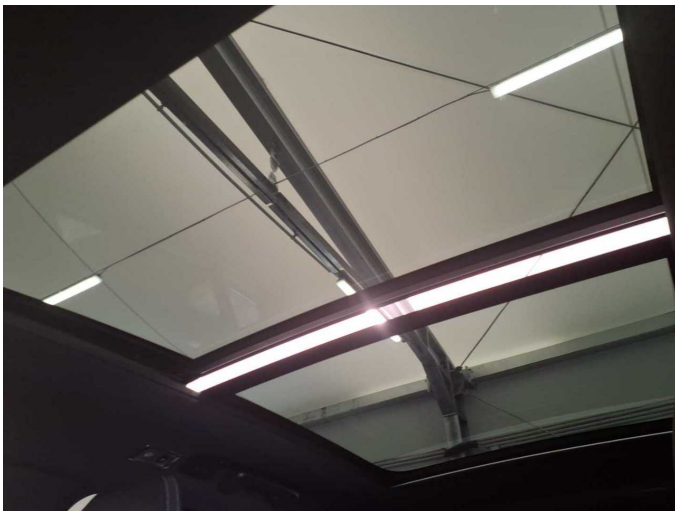


Figure 21: Misc.



Figure 22: Misc.

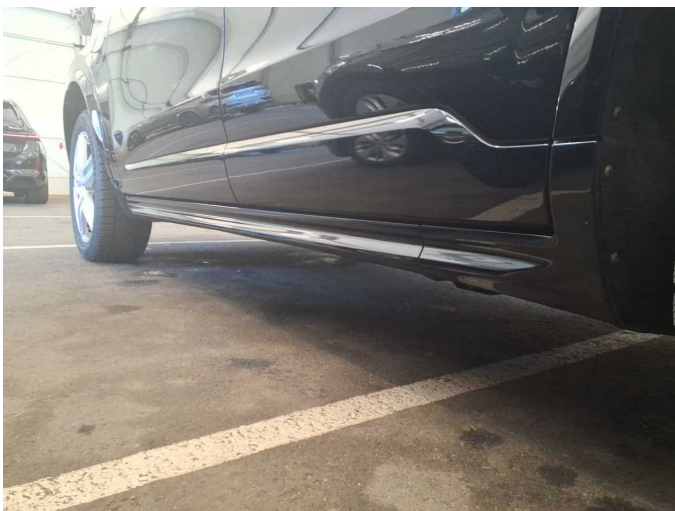


Figure 23: Misc.



Figure 24: Misc.



Figure 25: Misc.



Figure 26: Misc.



Figure 27: Misc.



Figure 28: Misc.

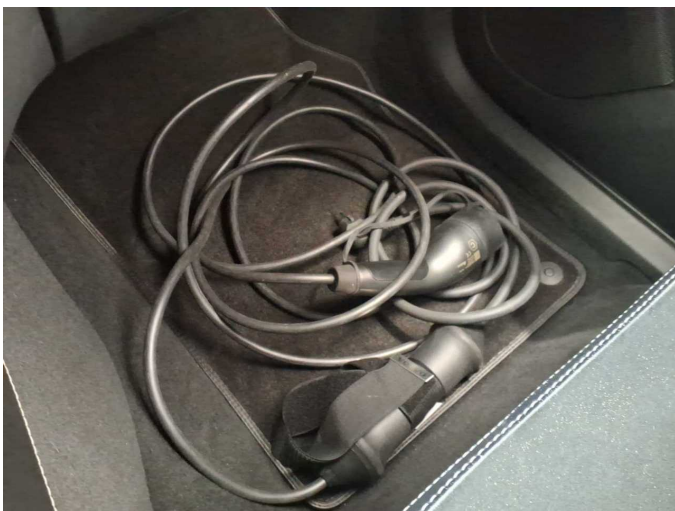


Figure 29: Misc.



Damage 1: Equipment: Tirefit filler - Expired - Replace



Damage 2: Instrument panel: Indicator light (Reifendruck) - on - Perform diagnosis



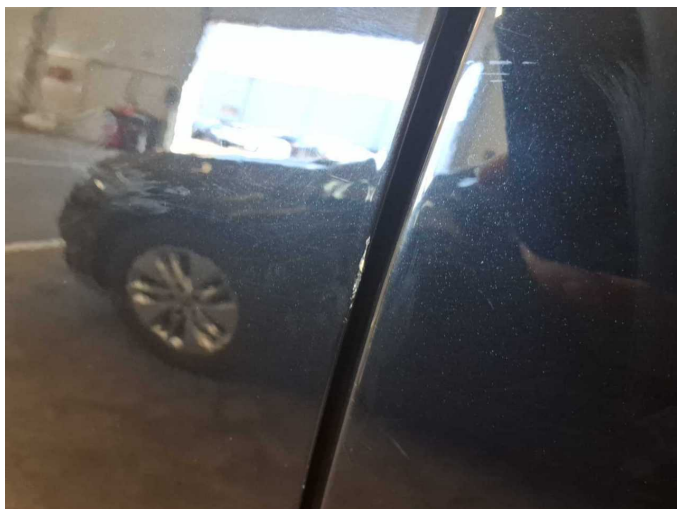
Damage 3: Door - front left side: Door edge - Scratch(es) - Smart repair



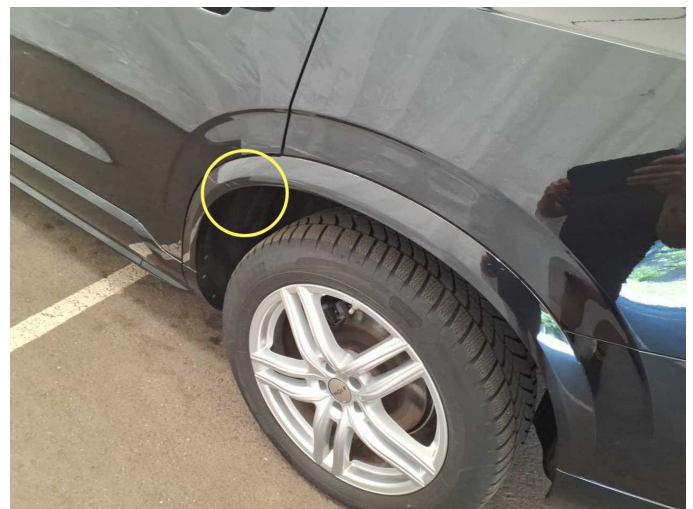
Damage 3: Door - front left side: Door edge - Scratch(es) - Smart repair



Damage 3: Door - front left side: Door edge - Scratch(es) - Smart repair



Damage 3: Door - front left side: Door edge - Scratch(es) - Smart repair



Damage 4: Side panel - rear left side: Wheel well extension - Scratch(es) - Smart repair



Damage 4: Side panel - rear left side: Wheel well extension - Scratch(es)
- Smart repair



Damage 5: 2nd wheel set: 1 tyre (Sommerreifen) - Damaged - Replace



Damage 5: 2nd wheel set: 1 tyre (Sommerreifen) - Damaged - Replace



Damage 6: 2nd wheel set: 1 tyre (Sommerreifen) - Damaged - Replace



Damage 6: 2nd wheel set: 1 tyre (Sommerreifen) - Damaged - Replace



Damage 7: 2nd wheel set: 1 alloy rim - Scratched - Loss in value



Damage 7: 2nd wheel set: 1 alloy rim - Scratched - Loss in value



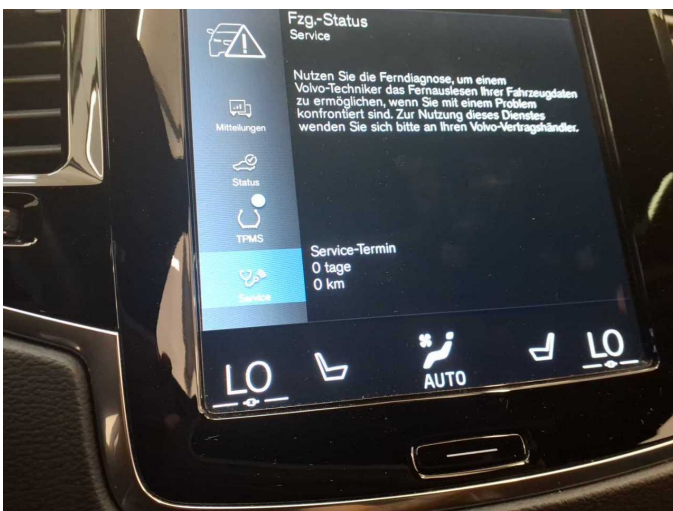
Damage 7: 2nd wheel set: 1 alloy rim - Scratched - Loss in value



Damage 8: 2nd wheel set: 1 alloy rim - Scratched - Loss in value



Damage 8: 2nd wheel set: 1 alloy rim - Scratched - Loss in value



Damage 9: Misc.: Inspection / maintenance - Due - Perform



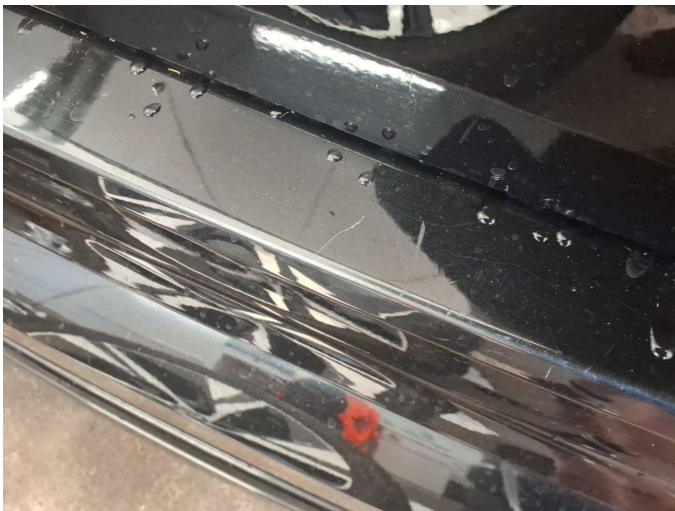
Damage 10: Door - rear right side: Door - Dent / paintcoat damage - Paint



Damage 10: Door - rear right side: Door - Dent / paintcoat damage - Paint



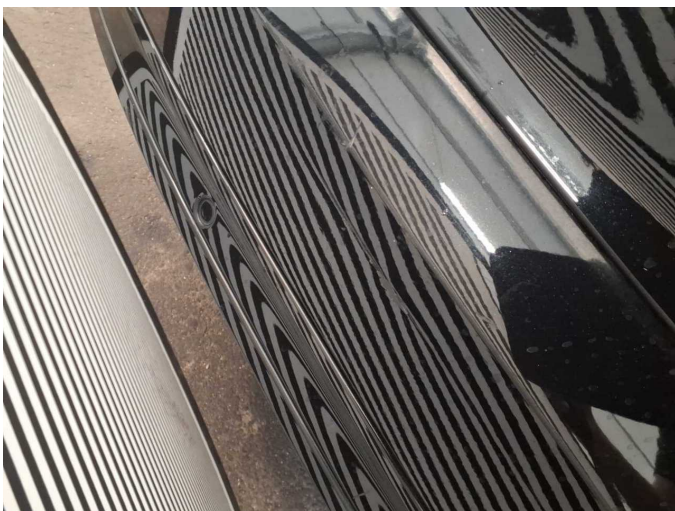
Damage 11: Rear bumper: Rear bumper - Scratch(es) - Paint



Damage 11: Rear bumper: Rear bumper - Scratch(es) - Paint



Damage 11: Rear bumper: Rear bumper - Scratch(es) - Paint



Damage 11: Rear bumper: Rear bumper - Scratch(es) - Paint



Wear and tear 6: Side panel - rear left side: Side panel - dent(s) - No deduction



Wear and tear 6: Side panel - rear left side: Side panel - dent(s) - No deduction



Repainting 1: Door - rear right side



Repainting 1: Door - rear right side



Wartungshistorie

(gemäß Auftraggeber Informationen)

Fahrgestellnummer: YV1LFH5VDN1832967
Hersteller / Modell: VOLVO VOLVO XC90 T8 AWD Recharge Geartronic RDesign Edition

Datum	KM-Stand	Beschreibung
17.03.2025	71.673	Bremse Sonstiges; Bremsklötze hinten; HU + AU; Motoröl b. Wartung; Ölfilter ern; Regelwartungsdienst; Wartung Sonstiges
18.04.2024	53.296	Bremsflüssigkeit; Bremsflüssigkeit ern; Luftfiltereinsatz ern; Motoröl b. Wartung; Ölfilter ern; Regelwartungsdienst; Reparatur Sonstiges; Wartung Sonstiges; Zündkerzen ern
05.05.2023	28.832	Motoröl b. Wartung; Ölfilter ern; Regelwartungsdienst; Wartung Sonstiges