

## Expertise

Protocol number: 45508069  
Order No. / Reference: 26382289  
Inspection date: 19 May 2026

Manufacturer: Mercedes-Benz

Model: 317 CDI Sprinter Kompakt HA 9G-Tronic

VIN: W1V9076311P517327



### Vehicle details

#### Manufacturer / Type / Model / Equipment

Mercedes-Benz 317 CDI Sprinter Kompakt HA 9G-Tronic

**Vehicle Identification number** W1V9076311P517327

**Mileage (Read)** 142,412 km

**First registration** 28 Nov 2022

**Number of holders** 1

**Power / Engine displacement** 125 kw / 1,950 ccm

**Fuel type / Cylinder** Diesel / 4

**Gearbox / Number of gears** Automatic / 9

**Type of drive** Front drive

**Type of vehicle** Van

**Colour / colour code** Iridiumsilber metallic

**Doors / Seats** 4 / 2

**Upholstery type** Cloth

**Colour of upholstery** Black-Anthracite



## Vehicle details

<b>Maintenance booklet / proof</b>	Non-existent	<b>Next maintenance in</b>	470 Tag(e)
<b>Key is / should be</b>	2 / 2	<b>FZG documents</b>	ZB#2 (B) was available (copy), ZB#1 (S) was not available.
		<b>Letter No.</b>	GP664163
<b>Previous damage / Accident</b>	Detectable	<b>Repainting</b>	Detectable
<b>Inspection conditions</b>	sufficient	<b>Lifting equipment / pit</b>	yes
<b>Test drive</b>	Not performed	<b>Engine function test</b>	Performed
<b>Manufacturer key number/ type code number</b>	2222 / BBH 98737		
<b>Emission standard</b>	EURO6;WLTP;AR;PI/CI;N1 III, N2	<b>fine dust sticker</b>	
<b>Permitted total weight</b>	3,500 kg	<b>Empty weight</b>	

## Tyres

### Mounted tyres

#	Tyre size	Type of tyre	Manufacturer	Tread depth
1)	235/65 R16 119R	Winter tyres on Steel	Continental	5mm / 5mm
2)	235/65 R16 119R	Winter tyres on Steel	Continental	6mm / 6mm

### Additional tyres

#	Tyre size	Type of tyre	Manufacturer	Tread depth
1)	235/65 R16 119R	Summer tyres on Steel	Continental	4mm / 4mm
2)	235/65 R16 119R	Summer tyres on Steel	Continental	5mm / 5mm

**Legend: Tread depth information for the left tire is listed first, for the right tire it is listed second on the axle in the direction of travel.**



## Equipment

### Standard equipment

- Storage compartment above windshield
- Rear towing eye
- ADAPTIVE ESP (latest generation) with load- and speed-dependent driving dynamics control
- Outdoor temperature display
- Battery: fleece battery 12 V / 92 Ah
- third brake light
- COC documents
- Tachometer
- Driving light assistant
- Generator 14 V / 200 A
- Transmission: 9G-TRONIC
- Grab handle for entry to the cargo area sliding door on the partition wall
- Instrument panel and combination instrument with various storage options
- Headrests (2), front
- Headlight range control
- Without weight increase/decrease: 3,500 kg
- Upholstery: Cloth
- Radio: Pre-installation for digital radio DAB
- Tires: Tires without specified make
- Tires: Premium protection tires (3 years)
- Sliding door on the right, cargo/passenger compartment
- Power steering
- Seats: Driver's seat armrest
- Seats: Driver's seat
- Speedometer km/h
- First aid kit
- Pre-installation for Remote Services Plus
- Immobiliser
- Central locking with radio remote control
- Registration certificate, Part II
- Storage compartment under cockpit
- Axle ratio  $i = 3.923$
- Driver's side airbag
- Electrically adjustable and heated exterior mirrors, left and right
- Hill start assist
- Brake lights, adaptive
- Diesel particulate filter and SCR
- Entry handle on rear right corner pillar
- Electric window regulator for driver and passenger door
- Noise measures
- Seatbelt warning device for driver's seat
- Main tank 71 liters
- HOLD function
- KEYLESS start
- Child safety locks on doors in the passenger compartment
- Steering wheel adjustable for tilt and height
- Mercedes-Benz emergency call system
- Breakdown management
- Radio: Radio preparation
- Radio accessories: Communication module (LTE) for digital services
- Wheels: Steel rims 6.5 J x 16
- Crosswind Assist
- Seats: Passenger seat armrest
- Seats: Adjustable passenger seat
- Start-stop function
- continuous partition wall
- Lashing eyes
- Warning triangle
- Heat-insulating glass
- Approval N1



## Extra equipment

- Distance Assist DISTRONIC active
- Airbag: Thorax bag/pelvis/side bag for driver (battery master switch, single pole)
- Entrance rear door
- Battery master switch, single pole
- Reference mass of at least 2611 kg is necessary.
- Brake assist, active
- Digital operating instructions
- Chassis for comfort and cargo protection
- High Beam Assist
- Hinged lid for storage compartment
- Tempmatic controlled air conditioning
- Comfort roof control unit
- Cargo area floor with different paint finish
- leather steering wheel
- Cable duct on side wall
- MBUX multimedia system with 10.25-inch touchscreen (High-resolution 10.25-inch touchscreen, hard drive navigation including 3 years of free map data updates, Mercedes PRO features, LINGUATRONIC voice control, WLAN hotspot, multimedia connection unit for connecting portable devices via two USB-C interfaces, multimedia unit in piano black, outer ring of the air vents in matte silver, center fill speaker for improved sound and voice output, improved hands-free function, live traffic capability, digital operation)
- Package: Park Assist (MBUX multimedia system with 7-inch touchscreen - electrically folding exterior mirrors - blind spot assist - parking package with reversing camera)
- Radio: Digital Radio DAB
- Rain sensor
- Wireless tire pressure monitoring system for front and rear axles
- Seats: Driver's seat box, low
- Seats: Comfort headrest, passenger
- Seats: Lumbar support for driver's seat
- Seat heating on driver's side
- Traffic Sign Assistant
- WET WIPER SYSTEM
- Heated windshield
- Passenger side airbag
- Airbag: Windowbag for driver and front passenger
- ATTENTION ASSIST (ATTENTION ASSIST can assist the driver on long, monotonous journeys by monitoring attention. If signs of fatigue or increasing inattention are detected, it suggests a break.)
- Front cupholder
- Lockable compartment in storage area above windshield
- Chassis stabilization level 1
- Seatbelt warning device for front passenger seat
- Hinged lids for storage compartments on the left and right
- Instrument cluster with color display
- Paint finish: Metallic
- LED High Performance Headlights
- Cable duct at rear portal
- Steering wheel: Multifunction steering wheel
- Navigation accessories: Live Traffic Information
- Navigation: 3 years of free map data updates
- Halogen fog lights
- Package: Acoustics in conjunction with MBUX
- Package: Anti-theft package
- Package: Instrument panel charging package in conjunction with MBUX (The charging package expands the charging options in the cockpit with two 5V USB-C ports and one 12V socket. One USB port and the 12V socket are installed in the center storage compartment of the instrument panel, and another USB port is located in the lower part of the center console. This allows for the charging of electronic devices such as mobile phones within easy reach of the driver and front passenger.)
- Tires: M+S tires
- Key: Multi-button radio remote control
- Seats: Armrest, driver and passenger door
- Seats: Comfort passenger seat
- Seats: Comfort headrest for driver
- Seats: Suspension seat comfort version, driver's seat
- 230V socket
- Workshop van interior fitting according to customer specifications
- Heat-insulating glass with band filter on the windshield

## Brief expert findings

Documents submitted	At the time of the inspection, the vehicle registration certificate Part 2 (title) was available, but the vehicle registration certificate Part 1 (document) was not. (Copy)
VIN comparison	The vehicle identification number (VIN) was read from the vehicle and its conformity with the submitted documents was confirmed by the undersigned during the inspection.
Inspection	The inspection conditions were sufficient for the assessment of the vehicle. Lifting equipment and/or a pit were available for examining the vehicle.
Test drive	No test drive/shunting maneuver was carried out during the inspection of the vehicle.
Engine function test	An engine test run was performed.



## Value reducing factors

No.	Component group	Description
1	Side panel - rear right side	Side panel - dent(s) - Smooth repair work
2	Boot lid / rear door	Rear door - left side - dent(s) - Smooth repair work
3	Trim / covers	Boot lid - interior trim - Damaged - Replace
4	Bonnet	Bonnet - Dent / paintcoat damage - Repair and paint
5	Door - front left side	Door - Dent / paintcoat damage - Repair and paint
6	Door - rear right side	Door - Deformed - Repair and paint

## Wear and tear

No.	Component group	Description
1	Front bumper	Front bumper (unpainted) - Stone chips - No deduction
2	Interior	Interior - Scratch(es) - No deduction
3	Vehicle glazing	Windscreen - Stone chips - No deduction

The vehicle shows signs of wear and tear commensurate with its age and use.

## Previous damages

No.	Previous damage	Extent of damage (Net)
1	Rear, Provided by user / customer	4.825,32 €

## Repainting

No.	Repainting
1	Boot lid / rear door

## Paint coat thickness measurement

Boot lid / rear door	182 µm
----------------------	--------

## Order/Scope of Order

An order was placed to prepare a sales report for the described vehicle. This report includes the following:

- Description of key vehicle information
- Documentation of equipment features  
(*Delivery by third-party service providers*)
- Documentation of damage, defects, missing parts
- Documentation of prior damage, unrepaired prior damage, repainting
- A brief visual or functional inspection of the equipment details, if possible.  
(*Functional testing of driver assistance systems is not included in the scope of services!*)
- a photographic documentation of the vehicle



## Basis for the order

This product is based on the guidelines for vehicle returns and valuations of light commercial vehicles published by Alphabet Fleet Management GmbH. The expert makes the specific findings in each individual case objectively, within the framework of the prescribed standards, based on their own expertise.

The vehicle inspection takes place in a fully assembled, unassembled state.

Damage or defects that can only be detected during disassembly/diagnostic work or through further investigation remain within the realm of prognostic risk. An increased risk exists due to concealed defects caused by fraudulent misrepresentation and which were not identifiable by the expert.

Damage or defects resulting from normal use or wear and tear of the vehicle will be accepted in accordance with the applicable standard.

There was no explicit identification or monetary consideration of the expected features within the product.

Features which, in their nature and extent, slightly exceed normal use but do not constitute unacceptable damage, will be documented and indicated as signs of wear, if applicable.

Damage or defects that, according to the applicable standard, can no longer be attributed to normal use or wear and tear are listed under "Value Reducing Factors" in the product description.

Depending on the product specification, a monetary ID can be provided. If this takes place, the costs can be 100% d or pro rata depending on the vehicle's age and mileage.

## Previous damages

According to available information previous damages were repaired at the vehicle. Traces of repairs, which allow conclusions about the area of repair, were not recognizable during the inspection.

## Comments

- Winterradsatz ist kein Bestandteil des Auslieferungsumfanges.



Figure 1: Diagonal front (left)



Figure 2: Diagonal front (right)



Figure 3: Diagonal rear (left)



Figure 4: Diagonal rear (right)



Figure 5: Interior - front

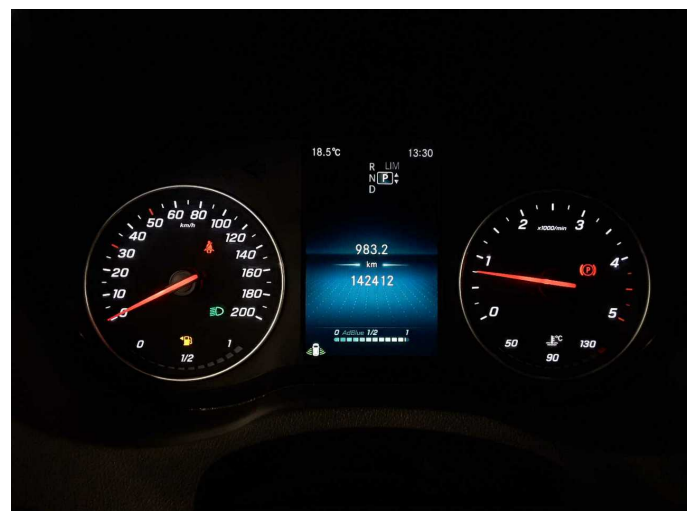


Figure 6: Instrument cluster



Figure 7: Instrument panel



Figure 8: Interior 360° view



Figure 9: Cargo area



Figure 10: VIN



Figure 11: Mounted tyres

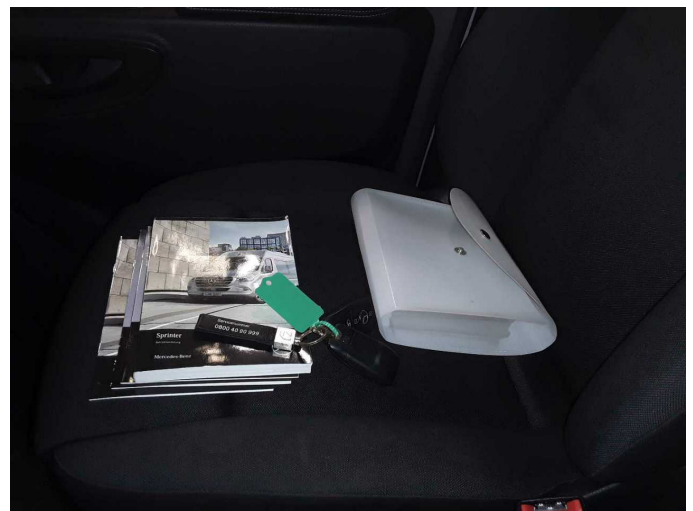


Figure 12: Documents



Figure 13: Additional tyres



Figure 14: Navigation

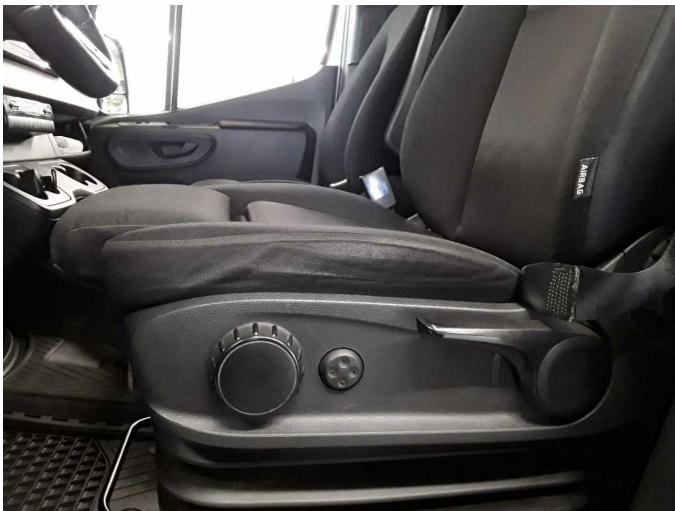


Figure 15: Misc.



Figure 16: Misc.



Figure 17: Misc.



Figure 18: Misc.



Figure 19: Misc.



Figure 20: Misc.

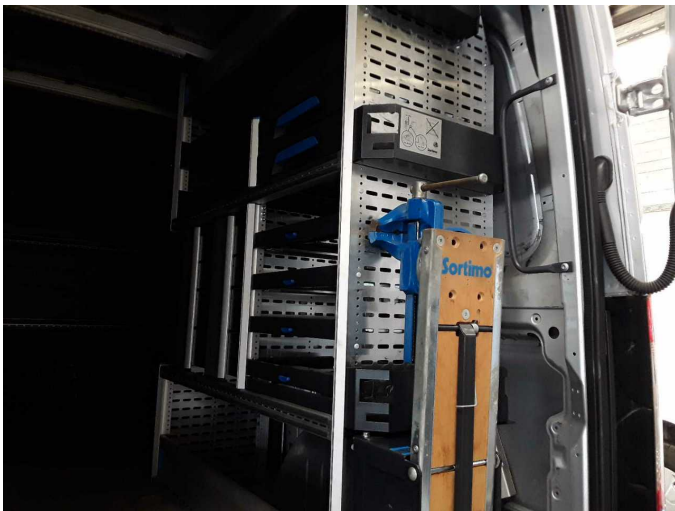


Figure 21: Misc.



Figure 22: Misc.



Figure 23: Misc.



Figure 24: Misc.



Figure 25: Misc.



Figure 26: Misc.



Figure 27: Misc.



Figure 28: Misc.

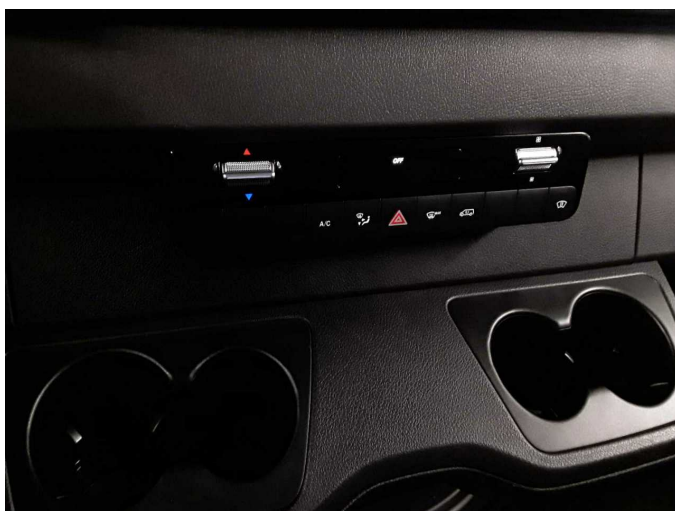
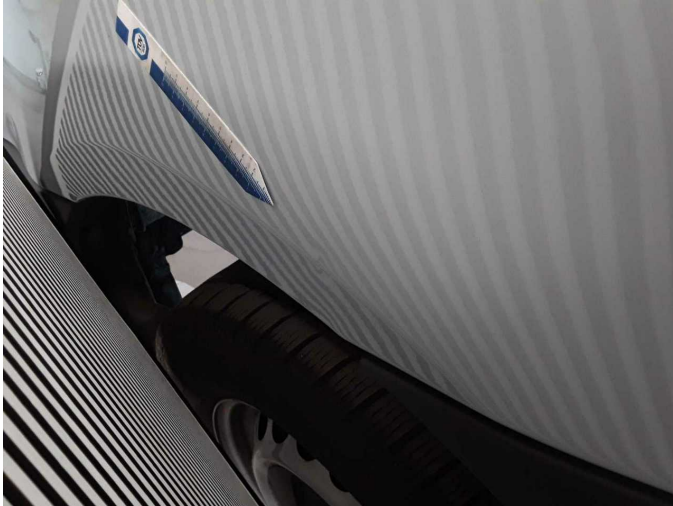


Figure 29: Misc.



Damage 1: Side panel - rear right side: Side panel - dent(s) - Smooth repair work



**Damage 1:** Side panel - rear right side: Side panel - dent(s) - Smooth repair work



**Damage 2:** Boot lid / rear door: Rear door - left side - dent(s) - Smooth repair work



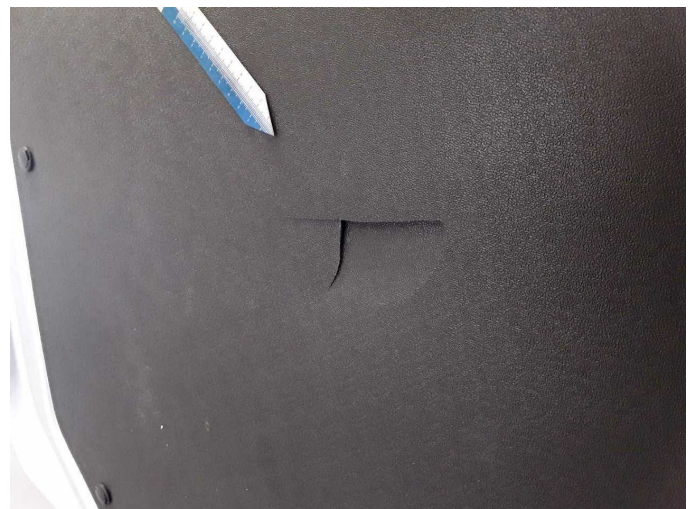
**Damage 2:** Boot lid / rear door: Rear door - left side - dent(s) - Smooth repair work



**Damage 2:** Boot lid / rear door: Rear door - left side - dent(s) - Smooth repair work



**Damage 3:** Trim / covers: Boot lid - interior trim - Damaged - Replace



**Damage 3:** Trim / covers: Boot lid - interior trim - Damaged - Replace



**Damage 4:** Bonnet: Bonnet - Dent / paintcoat damage - Repair and paint



**Damage 4:** Bonnet: Bonnet - Dent / paintcoat damage - Repair and paint



**Damage 5:** Door - front left side: Door - Dent / paintcoat damage - Repair and paint



**Damage 5:** Door - front left side: Door - Dent / paintcoat damage - Repair and paint



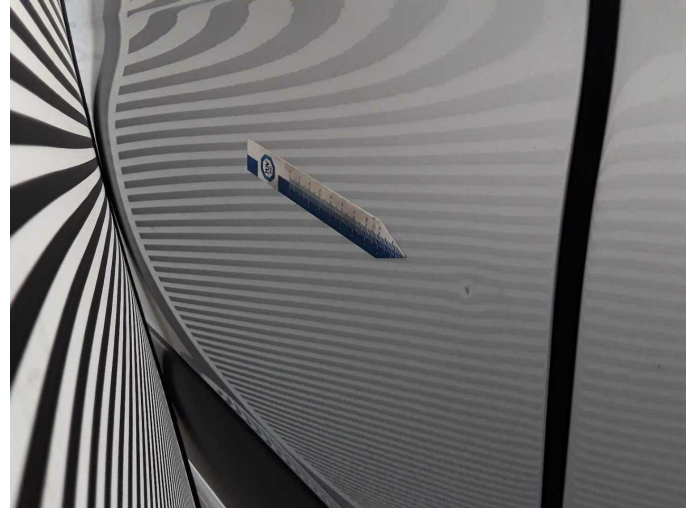
**Damage 5:** Door - front left side: Door - Dent / paintcoat damage - Repair and paint



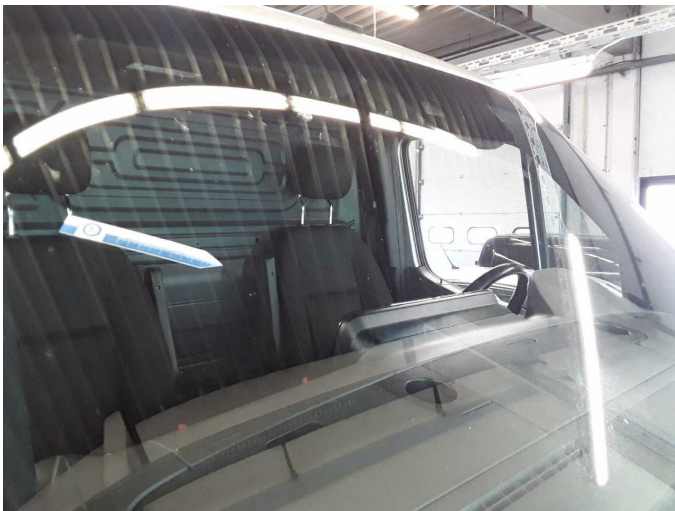
**Damage 6:** Door - rear right side: Door - Deformed - Repair and paint



**Damage 6:** Door - rear right side: Door - Deformed - Repair and paint



**Damage 6:** Door - rear right side: Door - Deformed - Repair and paint



**Wear and tear 3:** Vehicle glazing: Windscreen - Stone chips - No deduction



**Wear and tear 3:** Vehicle glazing: Windscreen - Stone chips - No deduction



**Repainting 1:** Boot lid / rear door



**Repainting 1:** Boot lid / rear door



Repainting 1: Boot lid / rear door



Repainting 1: Boot lid / rear door