

## Expertise

Protocol number: 46309233  
Order No. / Reference: 26635032  
Inspection date: 1 Jul 2026

Manufacturer: Seat

Model: Leon Sportstourer 2.0 TDI DSG Style

VIN: VSSZZKL4SR055671



### Vehicle details

#### Manufacturer / Type / Model / Equipment

Seat Leon Sportstourer 2.0 TDI DSG Style

**Vehicle Identification number** VSSZZKL4SR055671

**Mileage (Read)** 37,251 km

**First registration** 10 Feb 2025

**Number of holders** 1

**Power / Engine displacement** 110 kw / 1,968 ccm

**Fuel type / Cylinder** Diesel / 4

**Gearbox / Number of gears** Automatic / 7

**Type of drive** Front drive

**Type of vehicle** Station wagon

**Colour / colour code** Midnight Black (Y9T)

**Doors / Seats** 5 / 5

**Upholstery type** Cloth

**Colour of upholstery** Grey-Black



**Vehicle details**

<b>Maintenance booklet / proof</b>	digital proof / complete	<b>Next maintenance in</b>	20,200 km
<b>Last service on / at</b>	01/2026 at 27,423 km		
<b>Key is / should be</b>	2 / 2	<b>FZG documents</b>	ZB#2 (B) was available (copy), ZB#1 (S) was not available.
		<b>Letter No.</b>	HG736274
<b>Previous damage / Accident</b>	None detectable	<b>Repainting</b>	None detectable
<b>Inspection conditions</b>	sufficient	<b>Lifting equipment / pit</b>	No
<b>Test drive</b>	Not performed	<b>Engine function test</b>	Performed
<b>Manufacturer key number/ type code number</b>	7593 / ASL 00448		
<b>Emission standard</b>	EURO6;WLTP;EA;PI/CI;M, N1, N2	<b>fine dust sticker</b>	
<b>Permitted total weight</b>	2,040 kg	<b>Empty weight</b>	

**Tyres**

**Mounted tyres**

#	Tyre size	Type of tyre	Manufacturer	Tread depth
1)	205/55 R16 91V	Summer tyres on Light alloy	Nexen	6mm / 6mm
2)	205/55 R16 91V	Summer tyres on Light alloy	Nexen	6mm / 6mm

**Additional tyres**

#	Tyre size	Type of tyre	Manufacturer	Tread depth
1)	205/55 R16 91T	Winter tyres on Light alloy	Barum	6mm / 6mm
2)	205/55 R16 91T	Winter tyres on Light alloy	Barum	7mm / 5mm

**Replacement**

Typ	Tyre size	Type of tyre	Manufacturer	Tread depth
	Tirefit	Expiration date 10/2028		

**Legend: Tread depth information for the left tire is listed first, for the right tire it is listed second on the axle in the direction of travel.**



## Equipment

### Standard equipment

- Storage compartment in the front doors
- Driver and front passenger airbags (including center airbag)
- Airbag: Side airbag for driver and front passenger
- Exterior mirror housings in body color
- On-board computer
- Roof rails, black
- Electronic differential lock XDS (for front axle)
- Electronic parking brake (with auto-hold function)
- Electric window regulator with anti-pinch protection and one-touch function
- Gear recommendation display
- Luggage compartment roller blind
- Cruise control system
- Illuminated glove compartment
- Rear window wiper
- Galvanized body
- Keyless Go (engine start/stop button)
- Front headrests (2)
- Rear headrests (3)
- Leather steering wheel with multifunction controls
- Reading light front/rear
- Rear center armrest with pass-through option
- Fatigue detection
- Emergency call service (no registration required, service is activated upon delivery)
- Radio accessories: 6 speakers
- Radio accessories: Bluetooth interface with integrated hands-free system and audio streaming
- Radio accessories: Digital radio reception DAB+
- Wheels: Alloy wheels (4) 7 J x 16" "Design I" (With tires 205/55 R 16)
- Power steering (electromechanical)
- Seats, passenger seat height adjustable
- Seats: Driver's seat with height adjustment
- Seats: Lumbar support for front passenger
- Seats: Lumbar support for driver
- Sun visor on driver and passenger side
- Lane departure warning system
- Power outlet: 12V socket at the front
- Front Assist area monitoring system with City Emergency Braking function
- Traffic sign recognition
- Electronic immobilizer
- Central locking with remote control (incl. tailgate - door locking system from inside - 2 remote folding keys)
- Storage pockets on the backs of the front seats
- Airbag: Passenger airbag deactivation
- Airbag: Head airbag system, front and rear
- Electrically adjustable and heated exterior mirrors
- LED turn signals integrated into the exterior mirrors
- Third brake light (integrated into tailgate)
- Diesel particulate filter
- Tachometer
- Electronic Stability Control (ESC) including Anti-lock Braking System (ABS) (including Traction Control System (ASR))
- Luggage compartment lighting
- Speed limiter
- Transmission: 7-speed DSG
- Heated rear window
- ISOFIX child seat restraint system, two anchor points in the outer 2nd row of seats
- "Climatronic" air conditioning system (with 1-zone temperature control)
- LED technology for headlights, daytime running lights and taillights
- Lights: Full LED taillights (Infinite Light - LED light strip at the rear)
- Fog lights with cornering light function in LED technology
- Upholstery: Cloth
- Radio: Media System Plus 10.4" (Audio system with 10.4" color touchscreen - 2 front USB-C ports - SEAT CONNECT - prepared for activation of the service packages Safety/Assistance and Remote Access)
- Tire pressure monitoring system
- Wheels: Tyre fit
- Paddle shifters on the steering wheel
- Seat belts: Three-point automatic fastening front and rear (warning tone for unfastened seat belts)
- Seats: Remote release for folding down the rear seat backrest into the boot
- Seats: Rear seat backrest asymmetrically split and foldable
- Start-stop system
- Ultrasonic rear parking aid
- Variable luggage compartment floor (with storage compartments in the luggage compartment)
- Lashing eyes in the luggage compartment
- Thermal insulation glazing



### Extra equipment

- Deletion of the model designation on the rear
- Paint finish: Metallic
- Package: Winter Package (heated steering wheel - heated front seats)
- Rear view camera
- Virtual Cockpit (Fully digital instrument cluster with 10.25" TFT display)
- Luggage partition net
- Navigation system (Navigation system with 12.9" display - 3D navigation - voice control. Prepared for activation of the SEAT CONNECT Plus service package with online infotainment and a 3-year contract term - Wireless Full Link Connectivity including Android Auto and Apple CarPlay)

### Brief expert findings

Documents submitted	At the time of the inspection, the vehicle registration certificate Part 2 (title) was available, but the vehicle registration certificate Part 1 (document) was not. (Copy)
VIN comparison	The vehicle identification number (VIN) was read from the vehicle and its conformity with the submitted documents was confirmed by the undersigned during the inspection.
Inspection	The inspection conditions were sufficient for the assessment of the vehicle. No lifting equipment or pit was available for inspecting the vehicle. Therefore, inspection of the vehicle's underside was only possible to a limited extent.
Test drive	No test drive/shunting maneuver was carried out during the inspection of the vehicle.
Engine function test	An engine test run was performed.

### Value reducing factors

No.	Component group	Description
1	Side panel - rear right side	Side panel - dent(s) - Smooth repair work
2	Rear bumper	Rear bumper - dent(s) - Smart repair
3	Boot lid / rear door	Boot lid - Scratch(es) - Smart repair
4	Door - front left side	Door - Scratch(es) - Smart repair
5	Roof	Roof (Anätzung) - Paint defect - Repair and paint

### Wear and tear

No.	Component group	Description
1	Side panel - rear right side	Sill - Scratch(es) - No deduction
2	Front bumper	Front bumper - Scratch(es) - No deduction
3	Bonnet	Bonnet - Stone chips - No deduction
4	2nd wheel set	1 alloy rim (Winterradsatz gehört nicht zur Ausstattung) - Scratch(es) - No deduction

The vehicle shows signs of wear and tear commensurate with its age and use.

### Order/Scope of Order

An order was placed to prepare a sales report for the described vehicle. This report includes the following:

- Description of key vehicle information
- Documentation of equipment features  
(*Delivery by third-party service providers*)
- Documentation of damage, defects, missing parts
- Documentation of prior damage, unrepaired prior damage, repainting
- A brief visual or functional inspection of the equipment details, if possible.  
(*Functional testing of driver assistance systems is not included in the scope of services!*)
- a photographic documentation of the vehicle



## Basis for the order

This product is based on the guidelines for vehicle returns and valuations published by Alphabet Fleet GmbH. The expert makes the specific findings in each individual case objectively, within the framework of the prescribed standards, based on their own expertise.

The vehicle inspection takes place in a fully assembled, unassembled state.

Damage or defects that can only be detected during disassembly/diagnostic work or through further investigation remain within the realm of prognostic risk. An increased risk exists due to concealed defects caused by fraudulent misrepresentation and which were not identifiable by the expert.

Damage or defects resulting from normal use or wear and tear of the vehicle will be accepted in accordance with the applicable standard.

There was no explicit identification or monetary consideration of the expected features within the product.

Features which, in their nature and extent, slightly exceed normal use but do not constitute unacceptable damage, will be documented and indicated as signs of wear, if applicable.

Damage or defects that, according to the applicable standard, can no longer be attributed to normal use or wear and tear are listed under "Value Reducing Factors" in the product description.

Depending on the product specification, a monetary ID can be provided. If this takes place, the costs can be 100% d or pro rata depending on the vehicle's age and mileage.

## Previous damages

No apparent prior damage that had been repaired could be found on the vehicle.

## Comments

Der beiliegende Winterradsatz ist kein Bestandteil der Ausstattung.



Figure 1: Diagonal front (left)



Figure 2: Diagonal front (right)



Figure 3: Diagonal rear (left)



Figure 4: Diagonal rear (right)



Figure 5: Interior - front



Figure 6: Interior - rear



Figure 7: Instrument cluster



Figure 8: Instrument panel



Figure 9: Interior 360° view



Figure 10: Cargo area



Figure 11: VIN



Figure 12: Mounted tyres



Figure 13: Documents



Figure 14: Additional tyres



Figure 15: Additional tyres



Figure 16: Navigation



Figure 17: Misc.



Figure 18: Misc.



Figure 19: Misc.

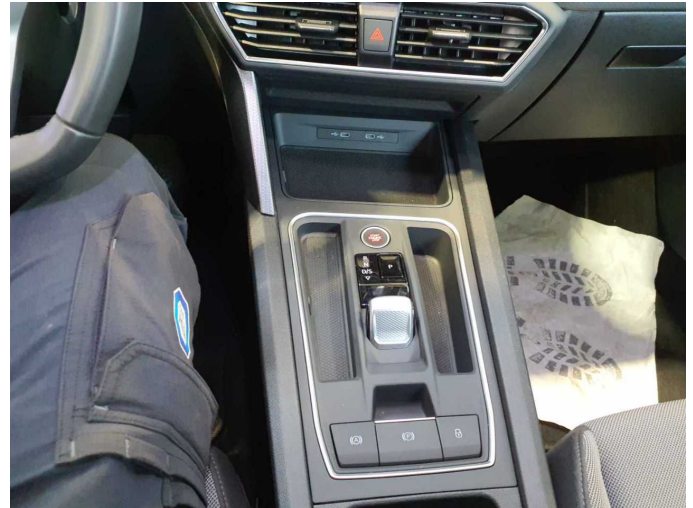


Figure 20: Misc.



Figure 21: Misc.



Figure 22: Misc.



Figure 23: Misc.



Figure 24: Misc.



Figure 25: Misc.



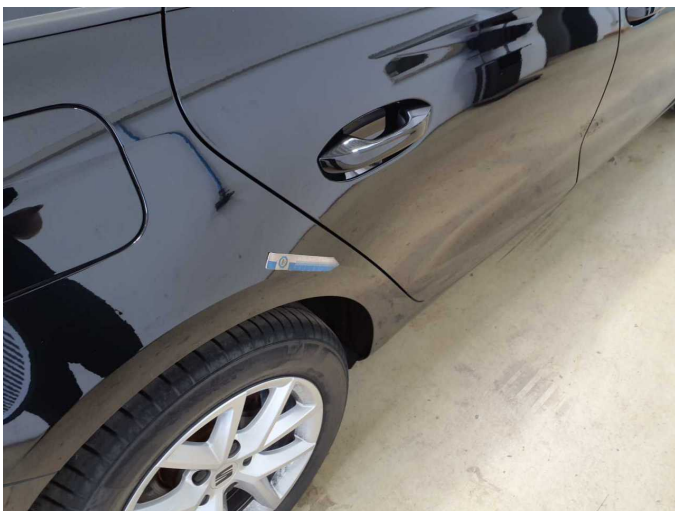
Figure 26: Misc.



Figure 27: Misc.



Figure 28: Misc.



**Damage 1:** Side panel - rear right side: Side panel - dent(s) - Smooth repair work



**Damage 1:** Side panel - rear right side: Side panel - dent(s) - Smooth repair work



**Damage 2:** Rear bumper: Rear bumper - dent(s) - Smart repair



**Damage 2:** Rear bumper: Rear bumper - dent(s) - Smart repair



**Damage 3:** Boot lid / rear door: Boot lid - Scratch(es) - Smart repair



**Damage 3:** Boot lid / rear door: Boot lid - Scratch(es) - Smart repair



**Damage 4:** Door - front left side: Door - Scratch(es) - Smart repair



**Damage 4:** Door - front left side: Door - Scratch(es) - Smart repair



**Damage 5:** Roof: Roof (Anätzung) - Paint defect - Repair and paint



**Damage 5:** Roof: Roof (Anätzung) - Paint defect - Repair and paint



**Wear and tear 4:** 2nd wheel set: 1 alloy rim (Winterradsatz gehört nicht zur Ausstattung) - Scratch(es) - No deduction



**Wear and tear 4:** 2nd wheel set: 1 alloy rim (Winterradsatz gehört nicht zur Ausstattung) - Scratch(es) - No deduction