

Expertise

Protocol number: 46276434
Order No. / Reference: 26574287
Inspection date: 30 Jun 2026

Manufacturer: Ford

Model: Transit Connect 230 L2 S&S Trend

VIN: WF07XXWPG7LY84589



Vehicle details

Manufacturer / Type / Model / Equipment

Ford Transit Connect 230 L2 S&S Trend

Vehicle Identification number WF07XXWPG7LY84589

Mileage (Read) 138,767 km

First registration 28 Jan 2021

Number of holders 1

Power / Engine displacement 88 kw / 1,499 ccm

Fuel type / Cylinder Diesel / 4

Gearbox / Number of gears Manual / 6

Type of drive Front drive

Type of vehicle Station wagon

Colour / colour code Silver Metallic

Doors / Seats 5 / 5

Upholstery type Cloth

Colour of upholstery Black



Equipment

Standard equipment

- ABS with EBD
- Exterior mirrors, electrically adjustable and heated
- Hill start assist
- Floor covering: Carpet (1st and 2nd row)
- On-board computer including outside temperature display
- Third brake light
- Fixed rear windows, right and left (at the height of the 3rd row of seats)
- Rear electric windows, right and left (at the height of the 2nd row of seats)
- Ford Easy Fuel (comfortable fuel filler cap and misfuelling protection)
- Rubberized luggage compartment floor mat
- Glove compartment with lid
- Rear window heater(s)
- Isofix mounting (on the outer seats of the 2nd row)
- Front air conditioning including manual recirculation
- Center console, front (open with storage area)
- Emergency brake light (hazard warning flashing activated during heavy braking)
- Package: Passenger car version package with rear swing door (deletion of partition grille - front airbag for front passenger - rear swing door with window - head and shoulder airbags (for outer seats of the 1st and 2nd row for short wheelbase and also the 3rd row for long wheelbase) - tire pressure monitoring system - without safety partition net (can be ordered separately if required, not retrofittable) - plastic (PVC) door armrests - warning system for unfastened driver and front passenger seat belts)
- Sliding door, right and left
- Electro-mechanical power steering (EPAS - Electric Power Assisted Steering)
- Automatic door locking mechanism (45 sec.)
- Passenger compartment seats: 2nd row (bench seat, 60:40 split, foldable - ISOFIX mounting on the outer seats - bench seat can be lowered into the footwell)
- Front spoiler lip
- Dust and pollen filter
- Concealed storage compartment on dashboard with 12-volt connection
- Power outlet: 12-volt connection on the center console, front and rear
- Power outlet: 12-volt connection in storage compartment on dashboard (driver's side)
- Daytime running light
- Immobiliser
- Central locking with remote control (door lock only on driver's door)
- Driver's side airbag
- Battery (80 Ah)
- Floor covering: Front floor mats, carpet floor mats (2-piece set)
- Diesel particulate filter (DPF)
- Electronic Stability Program (ESP) (with Traction Control (TCS) including Torque Vectoring Control and Adaptive Load Control)
- Front electric windows (with one-touch down function for driver's side)
- Ford ECO mode and gear shift indicator (signals environmentally friendly driving style)
- Transmission: 6-speed transmission
- Rear window wiper/washer system
- Interior lighting at the front and in the passenger/cargo area with delay function
- Steering column, adjustable in height and reach
- Fog light
- Package: -25° Starter Package
- Package: Economy (Start-stop system incl. reinforced battery - variable radiator air intake - energy recovery system)
- Radio: Audio system "MyConnection Radio" (Radio (FM/AM) - AUX input - MP3-compatible - USB port - Bluetooth interface - Audio remote control on the steering wheel - Hands-free system)
- Wheels: Tire repair kit
- Wheels: Steel wheels 6.5 J x 16 with 205/60 R 16 tires and wheel trims
- Side protection strips, plastic
- Emergency Brake Assist (EBA)
- Front seat belts are height-adjustable (front seat belt tensioners and force limiters - warning system for unfastened driver's seat belt)
- Seats: Seat package 22 (fabric, dark "Route" - driver's seat, 3-way manually adjustable (forward/backward, height, backrest) - single front passenger seat, 2-way manually adjustable (forward/backward, backrest) and foldable - side airbags for driver and front passenger - height-adjustable headrests - manual lumbar support (driver's seat) - map pocket for driver's seat - seatbelt warning system for driver/front passenger)
- Front bumper and rear bumper end caps painted in body color
- Lashing eyes
- Heat-insulating glazing, lightly tinted
- Auxiliary electric heater (PTC), front



Extra equipment

- Electrically folding exterior mirrors (mirrors fold in automatically when the vehicle is locked)
- Paint finish: Metallic
- Headlight assistant with day/night sensor (incl. headlight dipped beam with switch-off delay, windscreen wipers with rain sensor, windscreen and windscreen washer nozzles, heated)
- Anti-theft alarm system with interior monitoring (including double locking and 2 remote control keys)
- Front and rear parking pilot system
- Safety partition net for separating passenger and luggage compartments (including attachment points (retrofitting not possible later))

Brief expert findings

Documents submitted	At the time of the inspection, the vehicle registration certificate Part 2 (title) was available, but the vehicle registration certificate Part 1 (document) was not. (Copy)
VIN comparison	The vehicle identification number (VIN) was read from the vehicle and its conformity with the submitted documents was confirmed by the undersigned during the inspection.
Inspection	The inspection conditions were sufficient for the assessment of the vehicle. No lifting equipment or pit was available for inspecting the vehicle. Therefore, inspection of the vehicle's underside was only possible to a limited extent.
Test drive	No test drive/shunting maneuver was carried out during the inspection of the vehicle.
Engine function test	An engine test run was performed.

Value reducing factors

No.	Component group	Description
1	Misc.	Main inspection - No evidence - No deduction
2	Equipment	Tirefit filler - Expired - Replace
3	Rear bumper	Rear bumper (unpainted) - Scratch(es) - Loss in value
4	Wheel / tyres	Tyre - front right side (nicht fahrbereit) - Broken / torn - Replace
5	Engine	Engine cover - Broken / torn - Replace
6	Seat - front	armrests - Scratch(es) - Smart repair
7	Front bumper	Front bumper - Dent / paintcoat damage - Loss in value
8	Sliding door - left side	Sliding door - Dent / paintcoat damage - Smart repair
9	Body	Body - Glued / labelled - De-glue / neutralise
10	Equipment	Vehicle key - Broken / torn - Replace
11	Boot lid / rear door	Boot lid - Dent / paintcoat damage - Repair and paint
12	Vehicle glazing	Windscreen - Broken / torn - repair according to calculation

Wear and tear

No.	Component group	Description
1	Trim / covers	Carpet - front left side - Scratch(es) - No deduction
2	Trim / covers	Boot lining - Scratch(es) - No deduction
3	Rear of vehicle	Boot floor (Einlegeboden) - Broken / torn - No deduction
4	Door - front right side	Door - Scratch(es) - Cover / polish
5	Trim / covers	Floor mats - Broken / torn - No deduction
6	Trim / covers	Boot lid - interior trim - Scratch(es) - Smart repair
7	Wheel / tyres	Wheel cover - front right side - Scratch(es) - No deduction
8	Sill - left side	Sill - Scratch(es) - No deduction
9	Side panel - rear left side	Sill - Dent / paintcoat damage - No deduction
10	Side panel - rear right side	Sill - Scratch(es) - No deduction

The vehicle shows signs of wear and tear commensurate with its age and use.



Accident damages

No. Accident

1 Side right

Order/Scope of Order

An order was placed to prepare a sales report for the described vehicle. This report includes the following:

- Description of key vehicle information
- Documentation of equipment features
(*Delivery by third-party service providers*)
- Documentation of damage, defects, missing parts
- Documentation of prior damage, unrepaired prior damage, repainting
- A brief visual or functional inspection of the equipment details, if possible.
(*Functional testing of driver assistance systems is not included in the scope of services!*)
- a photographic documentation of the vehicle

Basis for the order

This product is based on the guidelines for vehicle returns and valuations published by Alphabet Fleet GmbH. The expert makes the specific findings in each individual case objectively, within the framework of the prescribed standards, based on their own expertise.

The vehicle inspection takes place in a fully assembled, unassembled state.

Damage or defects that can only be detected during disassembly/diagnostic work or through further investigation remain within the realm of prognostic risk. An increased risk exists due to concealed defects caused by fraudulent misrepresentation and which were not identifiable by the expert.

Damage or defects resulting from normal use or wear and tear of the vehicle will be accepted in accordance with the applicable standard.

There was no explicit identification or monetary consideration of the expected features within the product.

Features which, in their nature and extent, slightly exceed normal use but do not constitute unacceptable damage, will be documented and indicated as signs of wear, if applicable.

Damage or defects that, according to the applicable standard, can no longer be attributed to normal use or wear and tear are listed under "Value Reducing Factors" in the product description.

Depending on the product specification, a monetary ID can be provided. If this takes place, the costs can be 100% d or pro rata depending on the vehicle's age and mileage.

Previous damages

Non-repaired previous damages were found at the vehicle. The necessary repair costs are listed in the expert report or if necessary, are listed in detail in a separately enclosed repair cost calculation.

Comments

Die beigefügte Reparaturkostenkalkulation wurde nach bestem Wissen und Gewissen unter eingeschränkten Besichtigungsbedingung im demontagefreien Zustand erstellt. Es können aufgrund verdeckter Beschädigung erhebliche Mehrkosten und somit Abweichung der für den Unfall ausgewiesenen Reparaturkosten nicht ausgeschlossen werden.



Figure 1: Diagonal front (left)



Figure 2: Diagonal front (right)



Figure 3: Diagonal rear (left)



Figure 4: Diagonal rear (right)



Figure 5: Interior - front



Figure 6: Interior - rear



Figure 7: Instrument cluster



Figure 8: Instrument panel



Figure 9: Interior 360° view

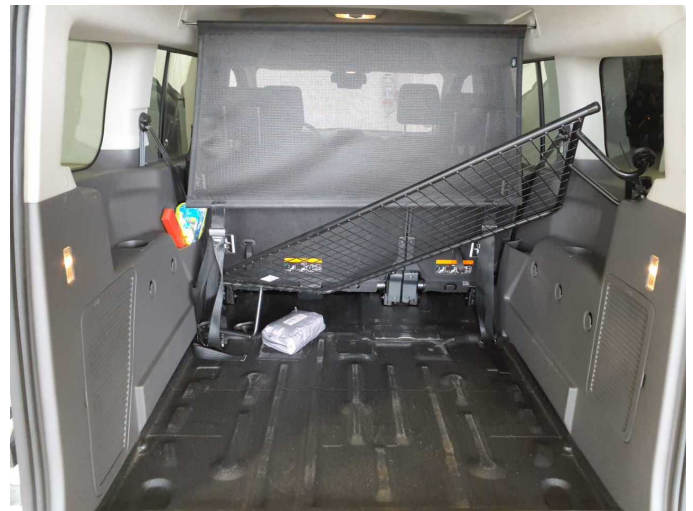


Figure 10: Cargo area



Figure 11: VIN



Figure 12: Mounted tyres



Figure 13: Documents



Figure 14: Additional tyres



Figure 15: Additional tyres

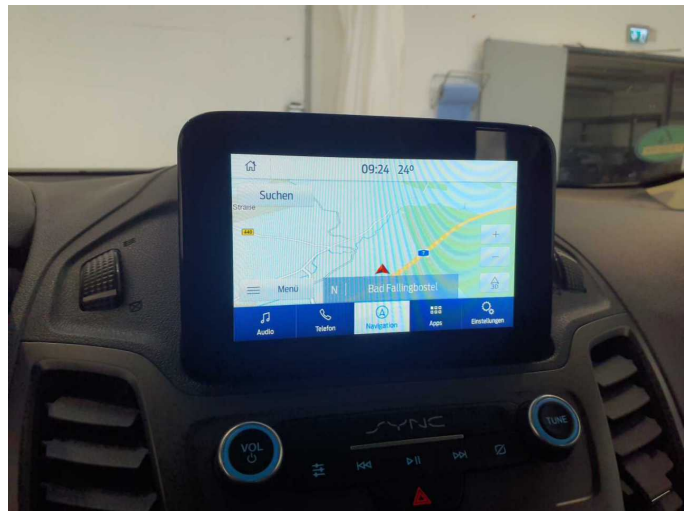


Figure 16: Navigation



Figure 17: Misc.



Figure 18: Misc.



Figure 19: Misc.



Figure 20: Misc.

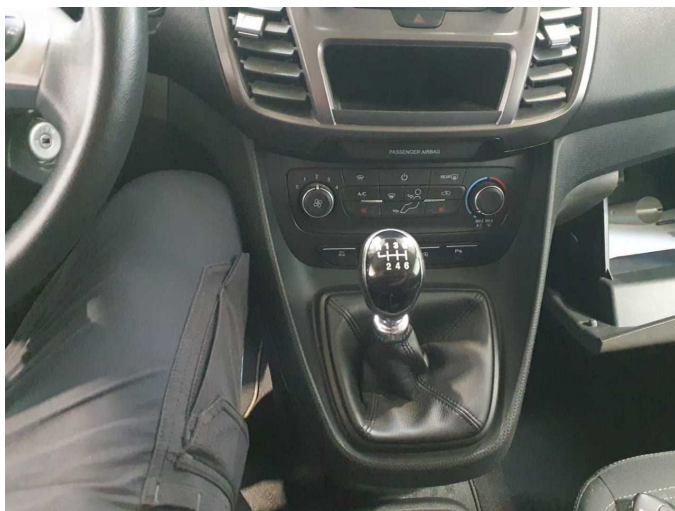


Figure 21: Misc.



Figure 22: Misc.

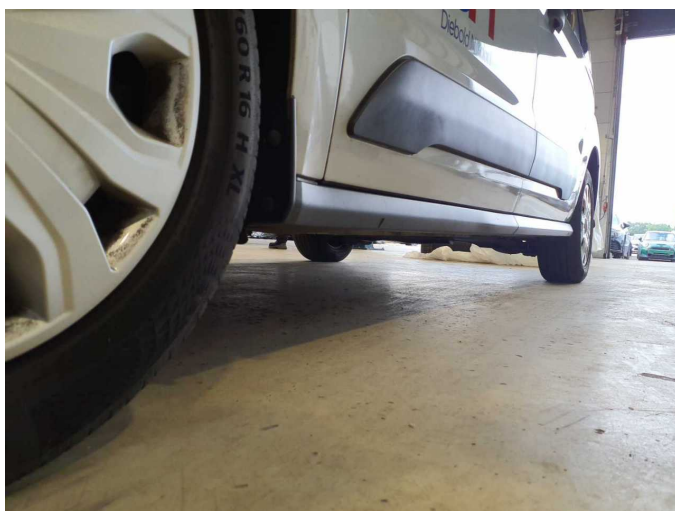


Figure 23: Misc.



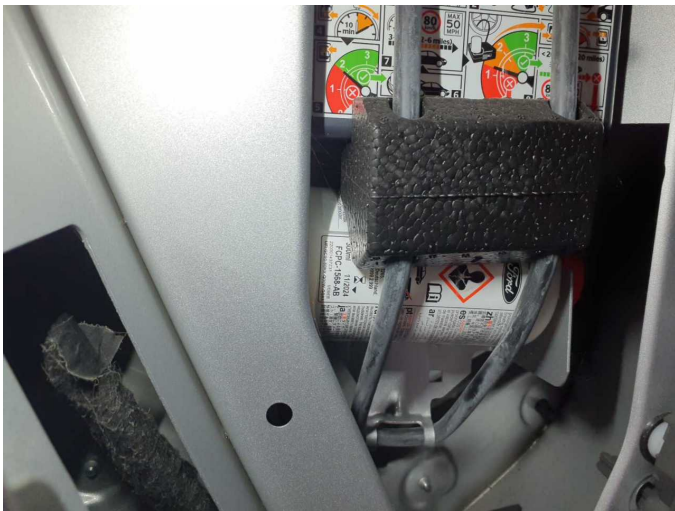
Figure 24: Misc.



Figure 25: Misc.



Figure 26: Misc.



Damage 2: Equipment: Tirefit filler - Expired - Replace



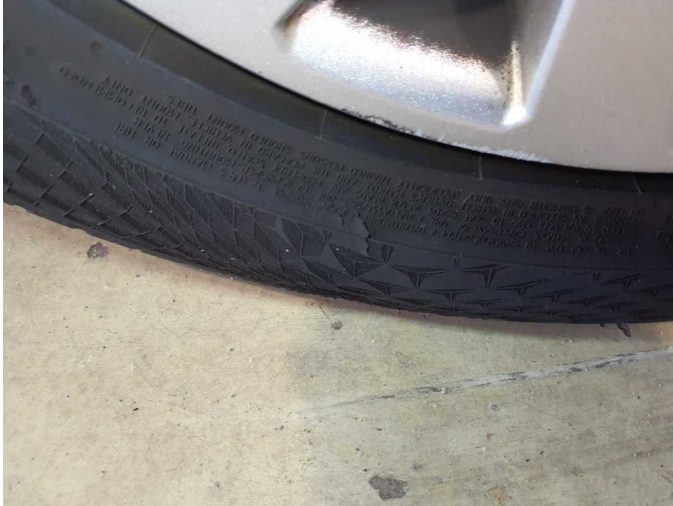
Damage 3: Rear bumper: Rear bumper (unpainted) - Scratch(es) - Loss in value



Damage 3: Rear bumper: Rear bumper (unpainted) - Scratch(es) - Loss in value



Damage 4: Wheel / tyres: Tyre - front right side (nicht fahrbereit) - Broken / torn - Replace



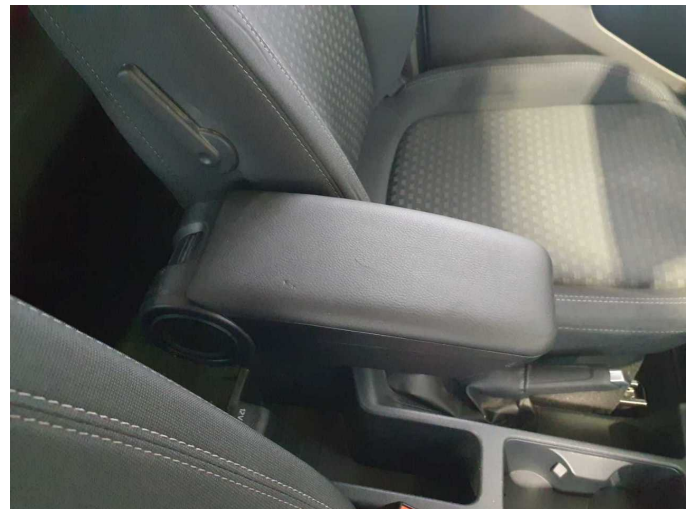
Damage 4: Wheel / tyres: Tyre - front right side (nicht fahrbereit) - Broken / torn - Replace



Damage 5: Engine: Engine cover - Broken / torn - Replace



Damage 5: Engine: Engine cover - Broken / torn - Replace



Damage 6: Seat - front: armrests - Scratch(es) - Smart repair



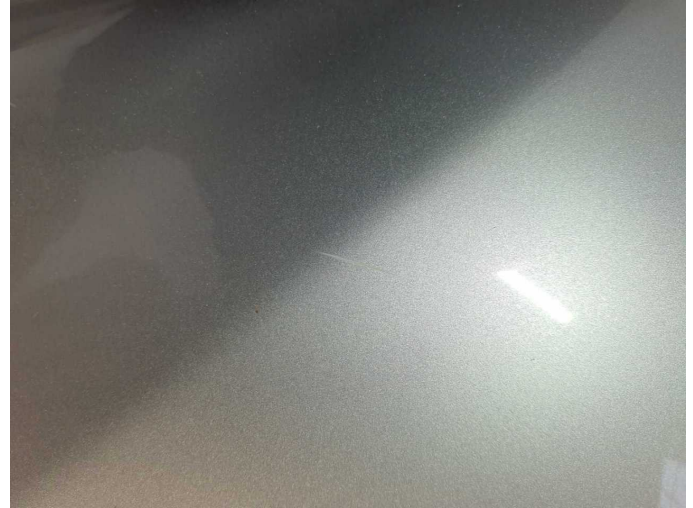
Damage 6: Seat - front: armrests - Scratch(es) - Smart repair



Damage 7: Front bumper: Front bumper - Dent / paintcoat damage - Loss in value



Damage 7: Front bumper: Front bumper - Dent / paintcoat damage - Loss in value



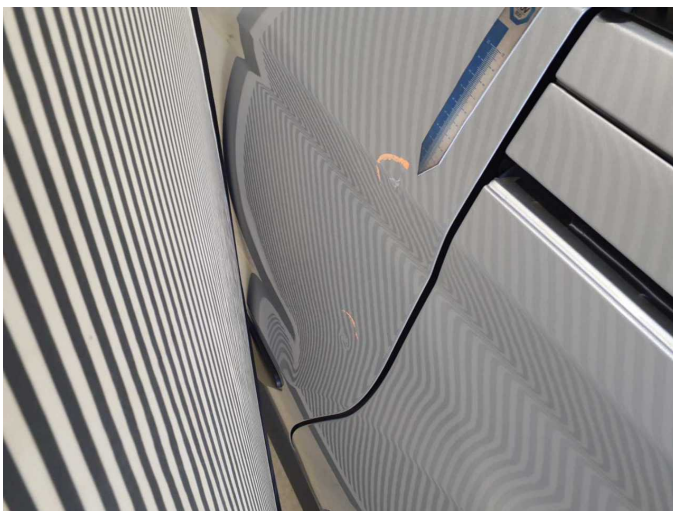
Damage 7: Front bumper: Front bumper - Dent / paintcoat damage - Loss in value



Damage 7: Front bumper: Front bumper - Dent / paintcoat damage - Loss in value



Damage 8: Sliding door - left side: Sliding door - Dent / paintcoat damage - Smart repair



Damage 8: Sliding door - left side: Sliding door - Dent / paintcoat damage - Smart repair



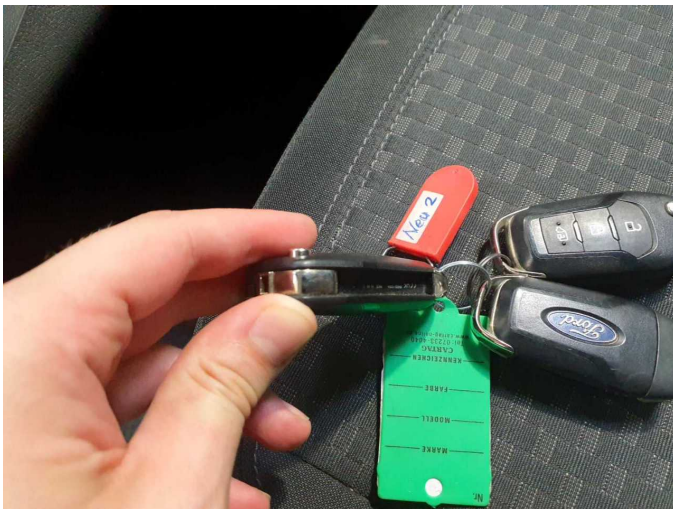
Damage 9: Body: Body - Glued / labelled - De-glue / neutralise



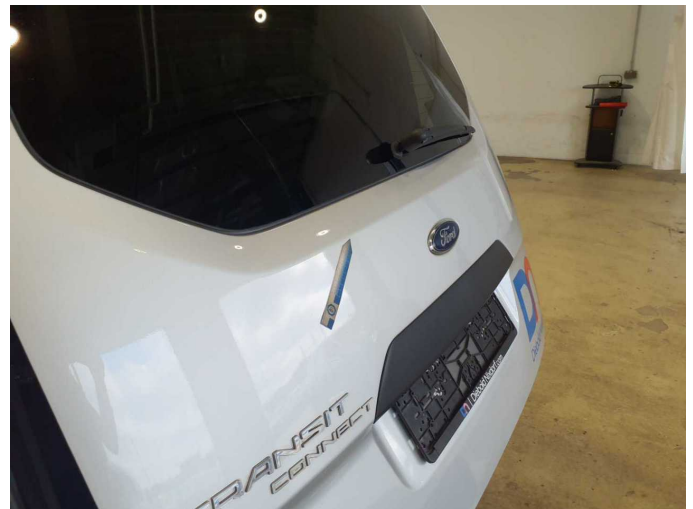
Damage 9: Body: Body - Glued / labelled - De-glude / neutralise



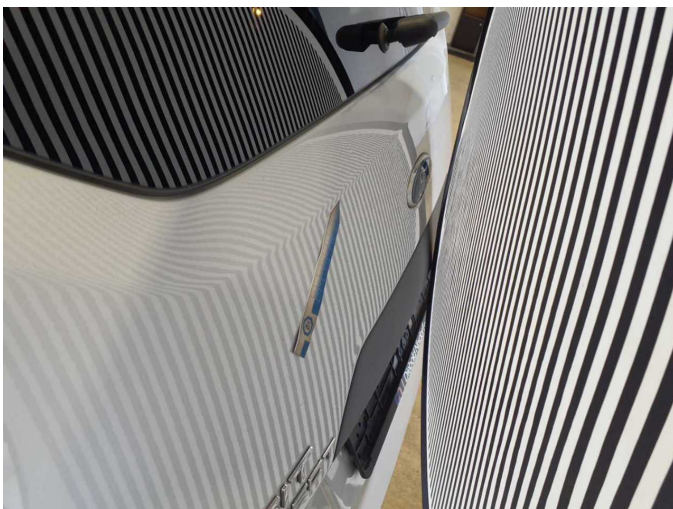
Damage 9: Body: Body - Glued / labelled - De-glude / neutralise



Damage 10: Equipment: Vehicle key - Broken / torn - Replace



Damage 11: Boot lid / rear door: Boot lid - Dent / paintcoat damage - Repair and paint



Damage 11: Boot lid / rear door: Boot lid - Dent / paintcoat damage - Repair and paint



Damage 11: Boot lid / rear door: Boot lid - Dent / paintcoat damage - Repair and paint



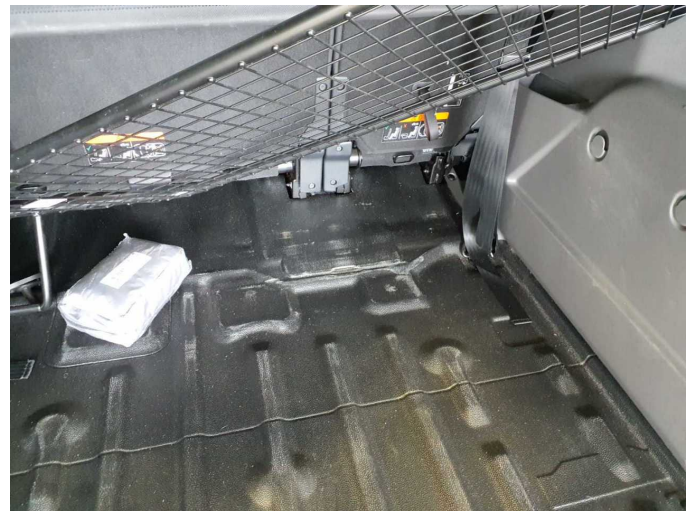
Damage 11: Boot lid / rear door: Boot lid - Dent / paintcoat damage - Repair and paint



Damage 12: Vehicle glazing: Windscreen - Broken / torn - repair according to calculation



Damage 12: Vehicle glazing: Windscreen - Broken / torn - repair according to calculation



Wear and tear 3: Rear of vehicle: Boot floor (Einlegeboden) - Broken / torn - No deduction



Wear and tear 3: Rear of vehicle: Boot floor (Einlegeboden) - Broken / torn - No deduction



Wear and tear 4: Door - front right side: Door - Scratch(es) - Cover / polish



Wear and tear 4: Door - front right side: Door - Scratch(es) - Cover / polish



Wear and tear 5: Trim / covers: Floor mats - Broken / torn - No deduction



Wear and tear 6: Trim / covers: Boot lid - interior trim - Scratch(es) - Smart repair



Wear and tear 7: Wheel / tyres: Wheel cover - front right side - Scratch(es) - No deduction



Wear and tear 7: Wheel / tyres: Wheel cover - front right side - Scratch(es) - No deduction



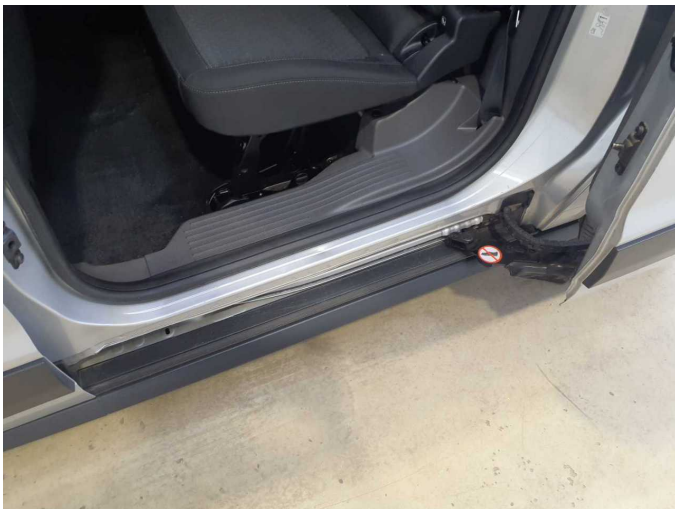
Wear and tear 7: Wheel / tyres: Wheel cover - front right side - Scratch(es) - No deduction



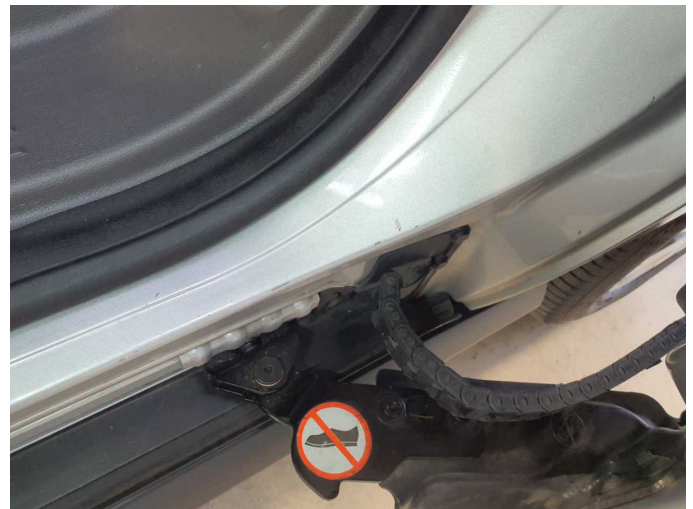
Wear and tear 8: Sill - left side: Sill - Scratch(es) - No deduction



Wear and tear 8: Sill - left side: Sill - Scratch(es) - No deduction



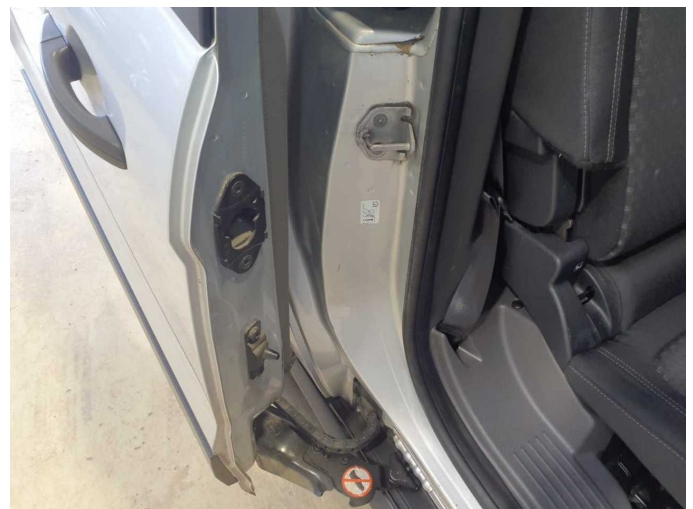
Wear and tear 9: Side panel - rear left side: Sill - Dent / paintcoat damage - No deduction



Wear and tear 9: Side panel - rear left side: Sill - Dent / paintcoat damage - No deduction



Wear and tear 9: Side panel - rear left side: Sill - Dent / paintcoat damage - No deduction



Wear and tear 10: Side panel - rear right side: Sill - Scratch(es) - No deduction



Wear and tear 10: Side panel - rear right side: Sill - Scratch(es) - No deduction



Accident 1: Side right



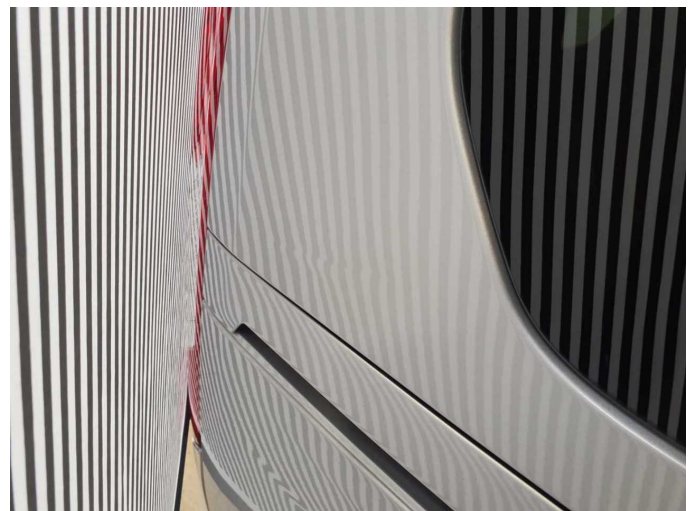
Accident 1: Side right



Accident 1: Side right



Accident 1: Side right



Accident 1: Side right



Accident 1: Side right



Accident 1: Side right