

MAZDA

Polestar Polestar 2 '19 BEV

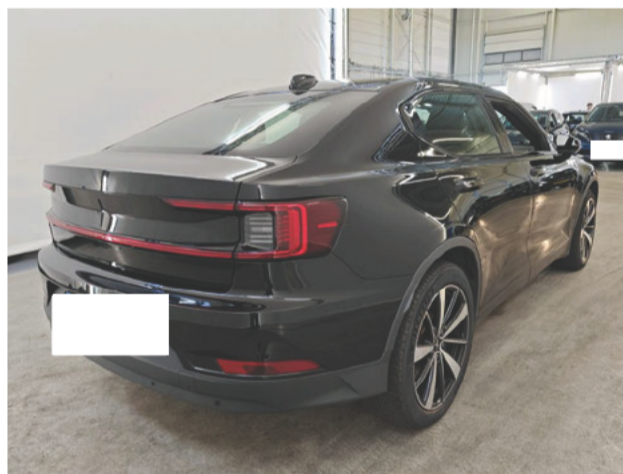
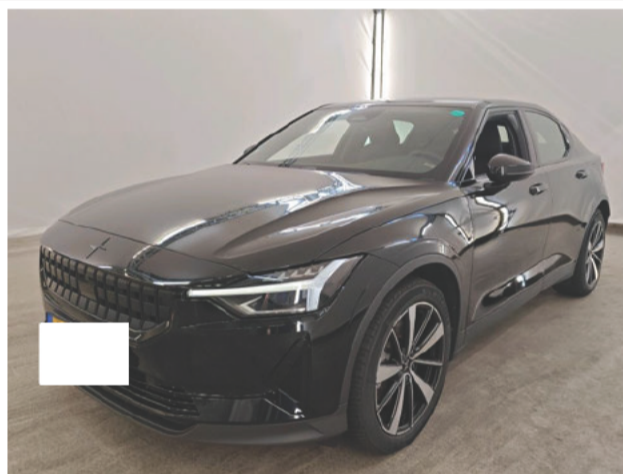
Vehicle information

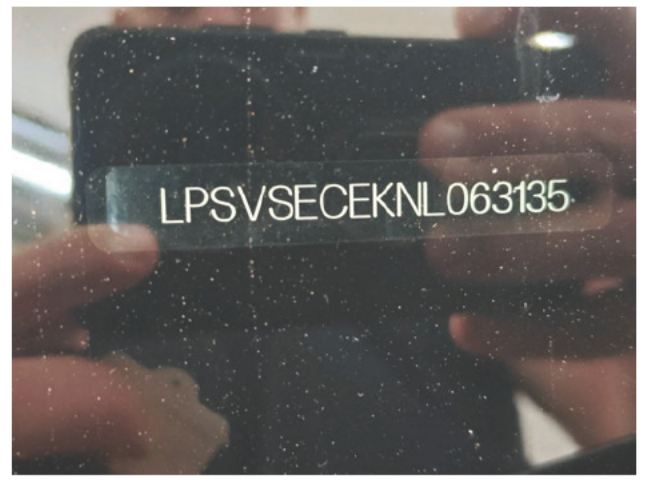
Make:	Polestar	License:	
Gearbox:	Automatic	Body color:	
Model:	Polestar 2 '19 BEV	VIN:	LPSVSECEKNL063135
Fuel type:	Electric	Power:	165 kW
Version:	63kWh Sing.M.St.Ra.	First registration:	28/12/2021
Mileage:	199198 km	N° of doors:	

Damage summary

Front	(2)
Left	(3)
Rear	(1)
Right	(2)

Commercial pictures





Batterijcertificaat
Datum van diagnose: 02/07/2026

93,87%
Status van de gezondheid (SOH)*

Polestar 2 78 kWh
VIN : LPSVSECEKNL063135
Kilometerstand : 199.198 km

*SOH berekend op basis van fabrieksgegevens, informatie om rekening mee te houden voor de fabrieksgarantie

Meer weten over www.get-moba.com

CARA



Options according to the inspector

Central consol F	Yes GPS	Yes Headlights Xenon/LED/Laser	Yes
Hook	Yes Radio multimedia	Yes Rear view camera	Yes
Telephone equipment	Yes		

Damages

Alloy rim FL

Scratch(es)
Repair and paint (complete)
Left



Alloy rim FR

Scratch(es)
Repair and paint (complete)
Right



Alloy rim RL

Scratch(es)
Repair and paint (complete)
Left



Alloy rim RR

Scratch(es)
Repair and paint (complete)
Right



Bonnet
Chemical polution
Repair and paint (complete)
Front



Bumper R
Scratch(es)
Repair and paint (complete)
Rear



Windscreen
Stone chip(s)
Windscreen repair
Front



Wing RL
Scratch(es)
Repair and paint (complete)
Left



Tyres

Front Left

Winter

245/45/19/102/V

Michelin

4.1 mm

Front Right

Winter

245/45/19/102/V

Michelin

5.2 mm

Rear Left

Winter

245/45/19/102/V

Michelin

6.8 mm

Rear Right

Winter

245/45/19/102/V

Michelin

5.1 mm

Checks

CO2 Emission	0	Digital maintenance	N/A
GPS storage	Yes	Luggage cover	Yes
Number head rests	5	Number of charging cables (rapid charge)	1
Number of keys total	2	Reset to factory settings	Yes, vehicle is reset to factory settings
Service book	Yes	User's manual	Yes

Information on the content and the scope of the inspection report:

- The assessment is based on the sales standards specified by the customer.
- Acceptable usage damages according to the sales standards are not always documented in this status report.
- The specified repair methods and/or resulting repair times have been determined, taking into account modern industrial repair methods.
- The purchasing dealer should assess individual repair costs.
- The inspection was carried out in a non disassembly condition. Macadam cannot be held responsible for any missing information. For further information, please contact the seller.