

Expertise

Protocol number: 46018380
Order No. / Reference: 26153488
Inspection date: 17 Jun 2026

Manufacturer: Mercedes-Benz

Model: 317 CDI Sprinter Standard HA PRO

VIN: W1V3KBFZ2TP865517



Vehicle details

Manufacturer / Type / Model / Equipment

Mercedes-Benz 317 CDI Sprinter Standard HA PRO

Vehicle Identification number W1V3KBFZ2TP865517

Mileage (Read) 1,627 km

First registration 1 Oct 2025

Number of holders 1

Power / Engine displacement 125 kw / 1,950 ccm

Fuel type / Cylinder Diesel / 4

Gearbox / Number of gears Automatic / 9

Type of drive Rear drive

Type of vehicle Van

Colour / colour code Selenite Grey Metallic
7992

Doors / Seats 4 / 3

Upholstery type Cloth

Colour of upholstery Black

Type of use rental car



Vehicle details

Maintenance booklet / proof	digital proof / complete	Next maintenance in	434 Tag(e)
Key is / should be	2 / 2	FZG documents	ZB#2 (B) was available (copy), ZB#1 (S) was not available.
		Letter No.	HP677014
Previous damage / Accident	None detectable	Repainting	None detectable
Inspection conditions	sufficient	Lifting equipment / pit	yes
Test drive	Not performed	Engine function test	Performed
Manufacturer key number/ type code number	2222 / BSU 63605		
Emission standard	EURO6;WLTP;EB;PI/CI;M, N1, N2	fine dust sticker	
Permitted total weight	3,500 kg	Empty weight	

Tyres

Mounted tyres

#	Tyre size	Type of tyre	Manufacturer	Tread depth
1)	235/65 R16 115R	All-season tyres on Steel rim with wheel cover	Falken	8mm / 8mm
2)	235/65 R16 115R	All-season tyres on Steel rim with wheel cover	Falken	8mm / 8mm

Legend: Tread depth information for the left tire is listed first, for the right tire it is listed second on the axle in the direction of travel.

TÜV SÜD Auto Partner GmbH
Wiesenring 2
04159 Leipzig

Inspection location
ARS Altmann AG Automobillogistik
Lilienthalstraße 2
29693 Hodenhagen



Equipment



Standard equipment

- Storage compartment above windshield
- Rear towing eye
- ADAPTIVE ESP (latest generation) with load- and speed-dependent driving dynamics control (Anti-lock Braking System (ABS) - Traction Control System (ASR) - Electronic Brakeforce Distribution (EBD) - Hydraulic Brake Assist (BAS) - Load Adaptive Control (LAC) - Roll Over Mitigation (ROM) - Roll Movement Intervention (RMI) - Enhanced Understeering Control (EUC) - Brake Disc Wiping/Drying (BDW) - Electronic Brake Prefill (EBP) - Easy Lane Change (ELC))
- Electrically folding exterior mirrors
- Battery: fleece battery 12 V / 92 Ah
- Brake assist, active
- Brake lights, adaptive
- Roof: High roof
- Diesel particulate filter and SCR
- Digital operating instructions
- Entry handle on rear right corner pillar
- Driving light assistant
- Electric window regulator for driver and passenger door
- Noise measures
- Seatbelt warning device for front passenger seat
- Grab handle for entry to the cargo area sliding door on the partition wall
- HOLD function
- Clothes hooks in the driver's cab
- Instrument cluster with color display
- Cable duct at rear portal
- Steering wheel adjustable for tilt and height
- Headlight range control
- Marker lights, side
- Navigation: Navigation pre-installation
- Package: Acoustics
- Upholstery: Cloth
- Radio: Digital Radio DAB
- Radio accessories: Communication module (LTE) for digital services
- Rain sensor
- Tires: Tires optimized for rolling resistance
- Tire pressure monitoring (on front and rear axles (wireless))
- Wheels: Premium complete wheel protection (3 years)
- Sliding door on the right, cargo/passenger compartment
- Power steering
- Jump start contact (The jump start contact facilitates jump-starting the vehicle and externally charging the starter battery. The contact is located in the engine compartment on the air filter box.)
- First aid kit
- Front axle with increased load capacity
- Pre-installation for Remote Services Plus
- Immobiliser
- Heat-insulating glass with band filter on the windshield
- Approval N1
- Storage compartment under cockpit
- Axle ratio $i = 3.923$
- Passenger side airbag
- Driver's side airbag
- Active Lane Keeping Assist
- ATTENTION ASSIST (ATTENTION ASSIST can assist the driver on long, monotonous journeys by monitoring attention. If signs of fatigue or increasing inattention are detected, it suggests a break.)
- Electrically adjustable and heated exterior mirrors, left and right
- Outdoor temperature display
- Hill start assist
- third brake light
- COC documents
- Ceiling light in the cargo/passenger compartment (with door contact)
- Tachometer
- Electrical components for trailer socket
- HVO-capable vehicle
- Generator 14 V / 250 A
- Transmission: 9G-TRONIC
- Seatbelt warning device for driver's seat
- Grab handle for entry of driver and passenger
- Main tank 93 liters
- Intelligent speed assistant
- Tempmatic controlled air conditioning
- Headrests (2), front
- Cable duct on side wall
- Steering wheel: Multifunction steering wheel
- Longitudinal beam reinforcement
- Mercedes-Benz emergency call system
- Without weight increase/decrease: 3,500 kg
- Breakdown Management (By pressing the breakdown button or via the phone book entry in the vehicle's address book, the disabled vehicle automatically establishes a voice connection with the Customer Assistance Center (CAC). It transmits the current location and all relevant vehicle information. The CAC staff immediately inform the nearest Mercedes-Benz Service24h, which dispatches a repair service.)
- Wheels: Tires 235/65 R 16 C
- Wheels: Steel rims 6.5 J x 16
- Crosswind Assist
- Start-stop function
- USB 5V socket
- Speedometer km/h
- Cruise control
- Blind Spot Assist
- Lashing eyes (according to DIN 7510-3 in the floor and in the B-pillars)
- Warning triangle
- Parking light removed
- Central locking with radio remote control



- Registration certificate, Part II

Extra equipment

- Storage for smartphones including wireless charging
- 13-pin trailer socket
- Interior lining of the cargo area up to roof height, washable in conjunction with partition wall, continuous along pillar C
- Load securing: Lashing rails on the side wall to the side railing.
- Package: Parking package with 360° camera (Parking Assistant Rear Cross Traffic Alert Drive Away Assist)
- Wheel arch loadable
- Seats: Driver's seat box, low
- Phone: Smartphone integration package
- Towbar (for increased towing capacity 3.5t)
- Wooden floor (cargo area)
- Hinged lid for storage compartment
- Paint finish: Metallic
- LED High Performance Headlights
- LED light strip in the cargo area
- Radio: MBUX multimedia system with 10.25-inch touchscreen
- Seats: Driver's seat armrest
- Seats: Suspension seat comfort version, driver's seat
- Long-throw nozzles in I-panel

Brief expert findings

Documents submitted	At the time of the inspection, the vehicle registration certificate Part 2 (title) was available, but the vehicle registration certificate Part 1 (document) was not. (Copy)
VIN comparison	The vehicle identification number (VIN) was read from the vehicle and its conformity with the submitted documents was confirmed by the undersigned during the inspection.
Inspection	The inspection conditions were sufficient for the assessment of the vehicle. Lifting equipment and/or a pit were available for examining the vehicle.
Test drive	No test drive/shunting maneuver was carried out during the inspection of the vehicle.
Engine function test	An engine test run was performed.

Value reducing factors

No.	Component group	Description
1	Misc.	Main inspection - No evidence - No deduction
2	Misc.	Inspection / maintenance - No evidence - No deduction
3	Door - front left side	Door edge - Scratch(es) - Smart repair
4	Boot lid / rear door	Rear door - right side - dent(s) - Smooth repair work
5	Roof	Roof - dent(s) - Smooth repair work
6	Rear bumper	Rear bumper - Scratch(es) - Smart repair
7	Boot lid / rear door	Rear door - left side (innen) - Dent / paintcoat damage - Smart repair
8	Boot lid / rear door	Rear door - right side (innen) - Dent / paintcoat damage - Smart repair
9	Trim / covers	Cargo area - lining - right side (Mitte) - Broken / torn - Replace
10	Sliding door, right	Sliding door (Unterhalb) - Scratch(es) - Smart repair

Order/Scope of Order

An order was placed to prepare a sales report for the described vehicle. This report includes the following:

- Description of key vehicle information
- Documentation of equipment features
(*Delivery by third-party service providers*)
- Documentation of damage, defects, missing parts
- Documentation of prior damage, unrepaired prior damage, repainting
- A brief visual or functional inspection of the equipment details, if possible.
(*Functional testing of driver assistance systems is not included in the scope of services!*)
- a photographic documentation of the vehicle



Basis for the order

This product is based on the guidelines for vehicle returns and valuations of light commercial vehicles published by Alphabet Fleet Management GmbH. The expert makes the specific findings in each individual case objectively, within the framework of the prescribed standards, based on their own expertise.

The vehicle inspection takes place in a fully assembled, unassembled state.

Damage or defects that can only be detected during disassembly/diagnostic work or through further investigation remain within the realm of prognostic risk. An increased risk exists due to concealed defects caused by fraudulent misrepresentation and which were not identifiable by the expert.

Damage or defects resulting from normal use or wear and tear of the vehicle will be accepted in accordance with the applicable standard.

There was no explicit identification or monetary consideration of the expected features within the product.

Features which, in their nature and extent, slightly exceed normal use but do not constitute unacceptable damage, will be documented and indicated as signs of wear, if applicable.

Damage or defects that, according to the applicable standard, can no longer be attributed to normal use or wear and tear are listed under "Value Reducing Factors" in the product description.

Depending on the product specification, a monetary ID can be provided. If this takes place, the costs can be 100% d or pro rata depending on the vehicle's age and mileage.

Previous damages

No apparent prior damage that had been repaired could be found on the vehicle.



Figure 1: Diagonal front (left)



Figure 2: Diagonal front (right)



Figure 3: Diagonal rear (left)



Figure 4: Diagonal rear (right)

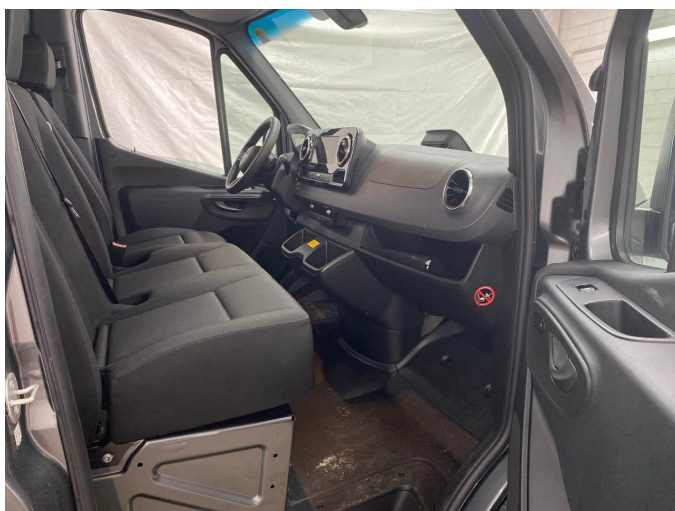


Figure 5: Interior - front



Figure 6: Interior - rear



Figure 7: Instrument cluster



Figure 8: Instrument panel



Figure 9: Interior 360° view



Figure 10: Cargo area



Figure 11: VIN



Figure 12: Mounted tyres



Figure 13: Documents



Figure 14: Misc.



Figure 15: Misc.



Figure 16: Misc.

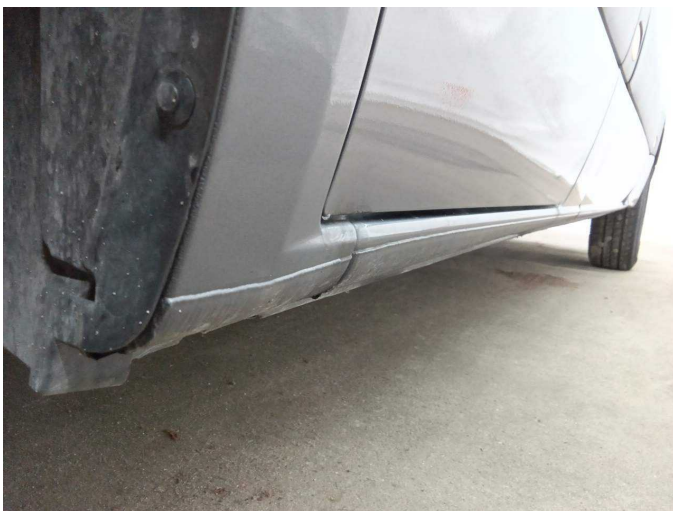


Figure 17: Misc.



Figure 18: Misc.



Figure 19: Misc.



Figure 20: Misc.



Figure 21: Misc.



Figure 22: Misc.



Figure 23: Misc.

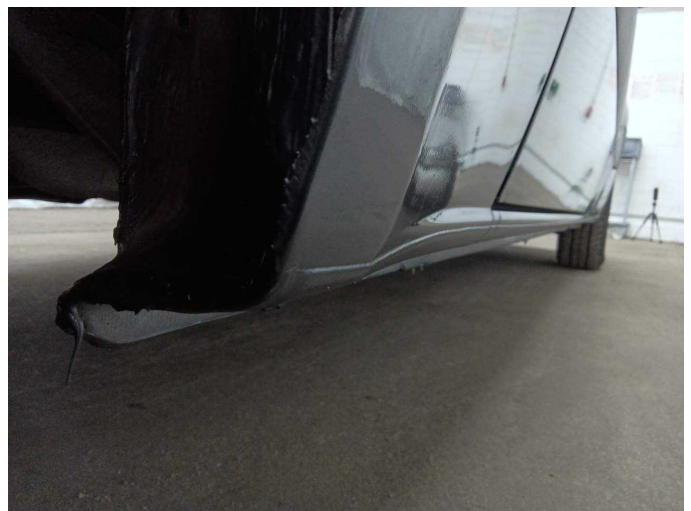


Figure 24: Misc.



Figure 25: Misc.



Figure 26: Misc.

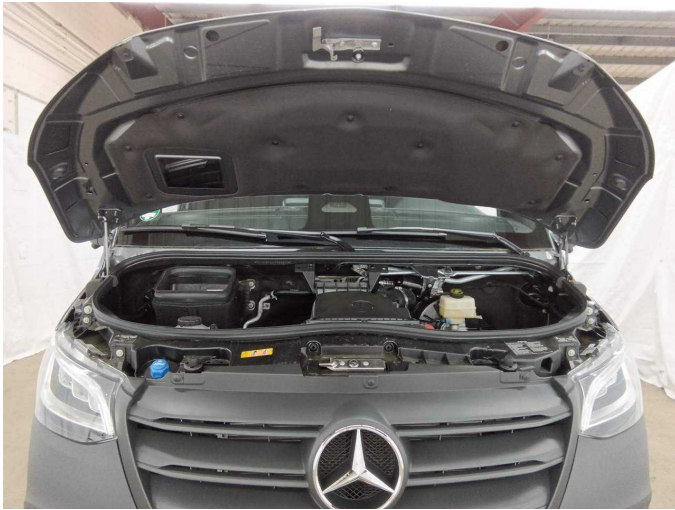


Figure 27: Misc.

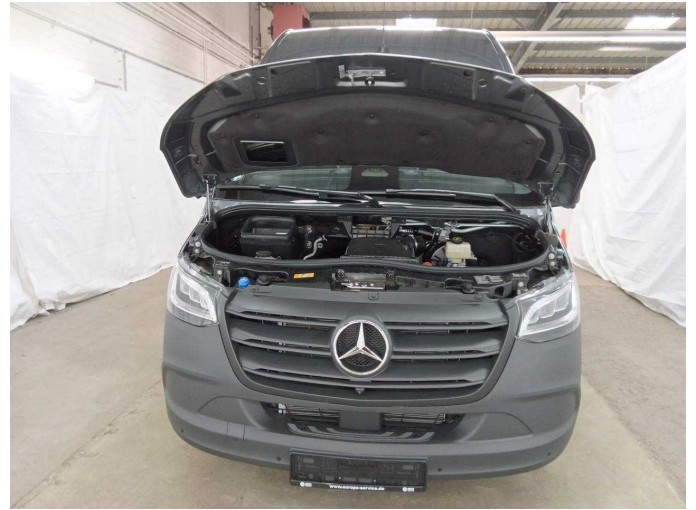


Figure 28: Misc.



Figure 29: Misc.



Figure 30: Misc.



Figure 31: Misc.



Figure 32: Misc.

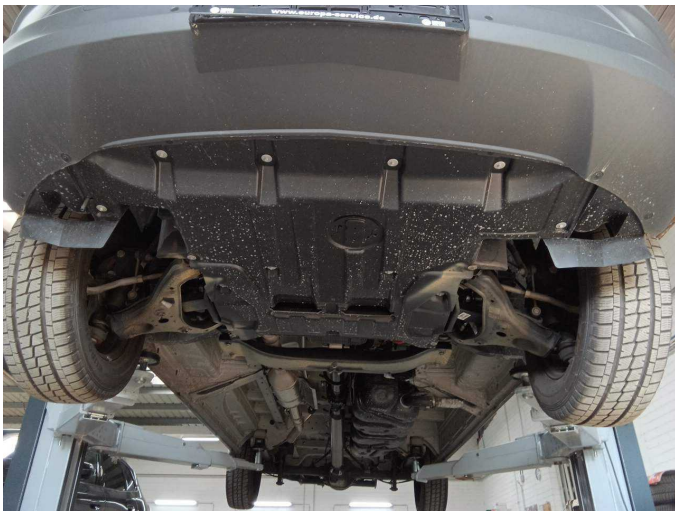


Figure 33: Misc.



Figure 34: Misc.



Damage 3: Door - front left side: Door edge - Scratch(es) - Smart repair



Damage 3: Door - front left side: Door edge - Scratch(es) - Smart repair



Damage 4: Boot lid / rear door: Rear door - right side - dent(s) - Smooth repair work



Damage 4: Boot lid / rear door: Rear door - right side - dent(s) - Smooth repair work



Damage 5: Roof: Roof - dent(s) - Smooth repair work



Damage 5: Roof: Roof - dent(s) - Smooth repair work



Damage 6: Rear bumper: Rear bumper - Scratch(es) - Smart repair



Damage 6: Rear bumper: Rear bumper - Scratch(es) - Smart repair



Damage 8: Boot lid / rear door: Rear door - right side (innem) - Dent / paintcoat damage - Smart repair



Damage 8: Boot lid / rear door: Rear door - right side (innem) - Dent / paintcoat damage - Smart repair



Damage 8: Boot lid / rear door: Rear door - right side (innem) - Dent / paintcoat damage - Smart repair



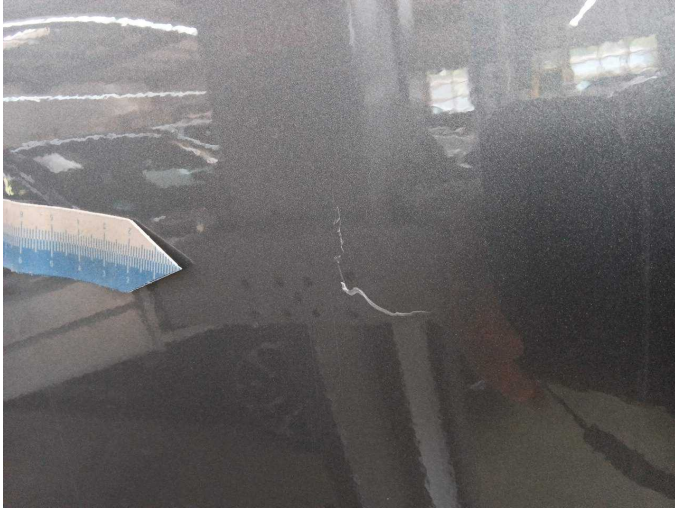
Damage 9: Trim / covers: Cargo area - lining - right side (Mitte) - Broken / torn - Replace



Damage 9: Trim / covers: Cargo area - lining - right side (Mitte) - Broken / torn - Replace



Damage 10: Sliding door, right: Sliding door (Unterhalb) - Scratch(es) - Smart repair



Damage 10: Sliding door, right: Sliding door (Unterhalb) - Scratch(es) - Smart repair