

## Expertise

Protocol number: 46170044  
Order No. / Reference: 26539573  
Inspection date: 19 Jun 2026

Manufacturer: Volkswagen

Model: Passat Variant 2.0 TDI SCR DSG 4Motion Alltrack

VIN: WVVZZZ3CZME106312



### Vehicle details

#### Manufacturer / Type / Model / Equipment

Volkswagen Passat Variant 2.0 TDI SCR DSG 4Motion Alltrack

**Vehicle Identification number** WVVZZZ3CZME106312

**Mileage (Read)** 196,561 km

**First registration** 27 Apr 2021

**Number of holders** 1

**Power / Engine displacement** 147 kw / 1,968 ccm

**Fuel type / Cylinder** Diesel / 4

**Gearbox / Number of gears** Automatic / 7

**Type of drive** All-wheel drive

**Type of vehicle** Station wagon

**Colour / colour code** Deep Black Perleffekt

**Doors / Seats** 5 / 5

**Upholstery type** Leather

**Colour of upholstery** Black

**readiness to drive** Roadworthy



## Vehicle details

<b>Maintenance booklet / proof</b>	digital proof / complete	<b>Next maintenance in</b>	9,100 km
<b>Last service on / at</b>	05/2026 at 196,365 km		
<b>Key is / should be</b>	2 / 2	<b>FZG documents</b>	ZB#2 (B) was available (copy), ZB#1 (S) was not available.
		<b>Letter No.</b>	GC228521
<b>Previous damage / Accident</b>	Detectable	<b>Repainting</b>	None detectable
<b>Inspection conditions</b>	sufficient	<b>Lifting equipment / pit</b>	No
<b>Test drive</b>	Not performed	<b>Engine function test</b>	Performed
<b>readiness to drive</b>	Roadworthy		
<b>Manufacturer key number/ type code number</b>	0603 / COP 00132		
<b>Emission standard</b>	EURO6;WLTP;AP;PI/CI; M, N1 I	<b>fine dust sticker</b>	
<b>Permitted total weight</b>	2,280 kg	<b>Empty weight</b>	

## Tyres

### Mounted tyres

#	Tyre size	Type of tyre	Manufacturer	Tread depth
1)	215/55 R17 94H	Winter tyres on Light alloy	Pirelli	5mm / 5mm
2)	215/55 R17 94H	Winter tyres on Light alloy	Pirelli	6mm / 6mm

### Additional tyres

#	Tyre size	Type of tyre	Manufacturer	Tread depth
1)	225/55 R17 101Y	Summer tyres on Light alloy	Continental	3mm / 3mm
2)	225/55 R17 101Y	Summer tyres on Light alloy	Continental	5mm / 5mm

### Replacement

Typ	Tyre size	Type of tyre	Manufacturer	Tread depth
E	225/55 R17 97W	Summer tyres on Light alloy	Continental	7 mm

**Legend: Tread depth information for the left tire is listed first, for the right tire it is listed second on the axle in the direction of travel.**



## Equipment

### Standard equipment

- Airbag for driver and front passenger
- Permanent all-wheel drive
- App-Connect
- Electrically adjustable and heated exterior mirrors
- Exterior mirrors with ambient lighting and passenger-side mirror lowering function
- Hill start assist
- Chrome trim on the side windows
- Roof rails, silver anodized
- Parking aid - warning signals for obstacles in the front and rear area
- Driving profile selection
- Remote release for luggage compartment lid
- Pedestrian detection
- Adjustable luggage compartment floor
- Interior lights front and rear with switch-off delay and dimming function
- Air conditioning
- Rear headrests (3)
- Front headrests
- LED taillights
- Steering wheel: Multifunction sports steering wheel in leather, with paddle shifters
- Multifunction display "Plus"
- Fatigue detection
- Non-smoking version
- Emergency call service
- Proactive occupant protection system in conjunction with "Front Assist"
- Rain sensor
- Wheels: 4 "Ancona" alloy wheels 8 J x 17
- Rear bench seat, undivided, backrest asymmetrically split and foldable, with center armrest
- Seat belts: Three-point automatic seat belt
- Start-stop system
- Telephone interface
- First aid kit, warning triangle and high-visibility vest
- Electronic immobilizer
- Airbag, head airbag system for front and rear passengers
- Anti-lock braking system (ABS)
- Adaptive Cruise Control (ACC) "stop & go", including speed limiter
- Cup holders (2) front
- Hill descent control
- third brake light
- Headliner in Mistral Grey
- Diesel particulate filter
- Electronic parking brake including auto-hold function
- Electronic stability program and electromechanical brake booster
- Windscreen made of laminated safety glass, heat and sound insulating
- Transmission: 7-speed DSG
- Interior mirror automatically dimming
- ISOFIX mounting points
- Instrument cluster with electronic speedometer, odometer and trip odometer, tachometer
- LED fog lights and cornering lights
- LED headlights with daytime running lights
- Headlight range control
- Makeup mirrors in the sun visors
- "Premium" multifunction display with multicolor screen
- Mesh partition
- Emergency braking assistant "Front Assist" (for automatic distance control ACC up to 210 km/h)
- Radio "Composition"
- Radio accessories: Digital radio reception DAB+
- Tire pressure monitoring system (passive)
- LED taillights
- Keyless start system without safe locking
- Power steering
- Seats: Front seats are height-adjustable
- 12V power outlet on the rear of the center console
- Textile floor mats
- Warning tone and light for unfastened seat belts front and rear



## Extra equipment

- Towbar, foldable (with electric release)
- Anti-theft alarm system (interior monitoring, backup horn and tow-away protection - illuminated make-up mirror in the sun visors, extendable sun visors)
- Navigation system "Discover Pro" incl. "Streaming & Internet" (4x20 Watt App-Con. Wireless Digital Cockpit. Operation with proximity sensor. Dual tuner with phase differentiation. DAB. Vehicle menu. Speed. Volume adjustment. Gestures. 32 GB SSD hard drive. Map 2D display. Tone control. 3-way TFT display with touchscreen. MP3. Navigation for Europe. Voice control. Telephone contact. Address. Telephone interface. "Comfort" with inductive charging. 2 USB iPod/iPhone. Traffic sign recognition. "We Connect Plus" incl. "We Connect". Dynamic route guidance. RDS. TMC tuner. Mobile key pre-activation, vehicle via smartphone.)
- Package: Ambient lighting (ambient lighting, 1-color - entry/warning lights in LED technology in all doors)
- Package: Driver Assistance Package "Plus" incl. IQ.LIGHT - LED matrix headlights in conjunction with Business Package (Dynamic Light Assist high beam control, Travel Assist, Lane Assist and Emergency Assist, LED matrix headlights, LED daytime running lights, cornering lights and dynamic turn signals, LED taillights with dynamic turn signals, dynamic headlight range control with dynamic cornering lights, rear fog lights on both sides, reversing lights on both sides, Park Assist including parking aid, Side Assist lane change assistant and Rear Traffic Alert)
- Keyless locking and starting system "Keyless Access" with safe locking (automatic locking and starting system where the vehicle key must be carried but not handled - if you carry the vehicle key and approach the vehicle, it is automatically unlocked; the engine is conveniently started via a start button)
- On-board tools and jack
- Fire extinguisher
- Luggage net
- Paint finish: Pearl effect
- Package: "Business Premium" package incl. navigation (from Business trim level) (2 USB-C ports in the front, 1 USB-C charging port in the rear, 230V socket, App-Connect incl. wireless, Apple CarPlay, Android Auto, "Travel Assist" driver assistance system and "Lane Assist" lane keeping system, Air Care Climatronic with 3-zone temperature control, allergen filter and rear controls, lumbar support in the front, electric on the driver's side, massage function on the driver's side, "Rear View" reversing camera, heated windshield washer nozzles, Comfort telephone interface, inductive charging function, heated front seats)
- Package: "Easy Open & Close" package including safe locking (extendable and removable luggage compartment cover with electric opening - tailgate with sensor-controlled opening and closing, with remote unlocking - keyless locking and starting system "Keyless Access" with safe locking)
- Package: Leather package "Vienna" with top comfort seats in the front in conjunction with Business Premium package (seat center panels and inner side bolsters of the front seats and the outer rear seats in leather "Vienna" - top comfort seats in the front - heated front seats - automatically heated windshield washer nozzles)
- Wheels: Spare wheel in driving tires, light alloy (Tire Mobility Set omitted)
- Rear side windows and rear window tinted
- Voice control
- Auxiliary heating and ventilation (with radio remote control and timer)

## Brief expert findings

Documents submitted	At the time of the inspection, the vehicle registration certificate Part 2 (title) was available, but the vehicle registration certificate Part 1 (document) was not. (Copy)
VIN comparison	The vehicle identification number (VIN) was read from the vehicle and its conformity with the submitted documents was confirmed by the undersigned during the inspection.
Inspection	The inspection conditions were sufficient for the assessment of the vehicle. No lifting equipment or pit was available for inspecting the vehicle. Therefore, inspection of the vehicle's underside was only possible to a limited extent.
Test drive	No test drive/shunting maneuver was carried out during the inspection of the vehicle.
Engine function test	An engine test run was performed.
readiness to drive	The vehicle was roadworthy at the time of inspection.



### Value reducing factors

No.	Component group	Description
1	Door - front left side	Door edge - Scratch(es) - Smart repair
2	Side panel - rear left side	Mudguard - rear left side - dent(s) - Smooth repair work
3	Seat - front	Seat cover - left side - Holes - Smart repair
4	Roof	Roof rail - left side - dent(s) - Smooth repair work
5	Side panel - rear left side	Protection strip - Scratch(es) - Replace
6	Side panel - rear left side	Sill - Dent / paintcoat damage - Repair and paint
7	Rear bumper	Rear bumper - Scratch(es) - Paint
8	Bonnet	Bonnet - Stone chips - Paint

### Wear and tear

No.	Component group	Description
1	Vehicle glazing	Windscreen - Stone chips - No deduction
2	Front bumper	Front bumper - Stone chips - No deduction
3	Bonnet	Radiator grille - Stone chips - No deduction
4	Trim / covers	Boot lid - interior trim - Damaged - No deduction
5	Boot lid / rear door	Boot lid - dent(s) - No deduction
6	Bonnet	Bonnet - dent(s) - No deduction
7	Side panel - rear right side	Sill - dent(s) - No deduction
8	Wheel / tyres	Alloy rim - front right side - Scratch(es) - No deduction

The vehicle shows signs of wear and tear commensurate with its age and use.

### Previous damages

No.	Previous damage	Extent of damage (Net)
1	Front, Provided by user / customer, from 15 Dec 2025	605,93 €

### Paint coat thickness measurement

Roof	123 µm	Roof rail - left side	112 µm
Roof rail - right side	109 µm	Boot lid / rear door	107 µm
Mudguard - left side	100 µm	Mudguard - right side	120 µm
Bonnet	117 µm	Side panel - rear left side	101 µm
Side panel - rear right side	102 µm	Door - rear left side	96 µm
Door - rear right side	99 µm	Door - front left side	97 µm
Door - front right side	98 µm		



## Order/Scope of Order

An order was placed to prepare a sales report for the described vehicle. This report includes the following:

- Description of key vehicle information
- Documentation of equipment features  
*(Delivery by third-party service providers)*
- Documentation of damage, defects, missing parts
- Documentation of prior damage, unrepaired prior damage, repainting
- A brief visual or functional inspection of the equipment details, if possible.  
*(Functional testing of driver assistance systems is not included in the scope of services!)*
- a photographic documentation of the vehicle

## Basis for the order

This product is based on the guidelines for vehicle returns and valuations published by Alphabet Fleet GmbH. The expert makes the specific findings in each individual case objectively, within the framework of the prescribed standards, based on their own expertise.

The vehicle inspection takes place in a fully assembled, unassembled state.

Damage or defects that can only be detected during disassembly/diagnostic work or through further investigation remain within the realm of prognostic risk. An increased risk exists due to concealed defects caused by fraudulent misrepresentation and which were not identifiable by the expert.

Damage or defects resulting from normal use or wear and tear of the vehicle will be accepted in accordance with the applicable standard.

There was no explicit identification or monetary consideration of the expected features within the product.

Features which, in their nature and extent, slightly exceed normal use but do not constitute unacceptable damage, will be documented and indicated as signs of wear, if applicable.

Damage or defects that, according to the applicable standard, can no longer be attributed to normal use or wear and tear are listed under "Value Reducing Factors" in the product description.

Depending on the product specification, a monetary ID can be provided. If this takes place, the costs can be 100% or pro rata depending on the vehicle's age and mileage.

## Previous damages

According to available information previous damages were repaired at the vehicle. Traces of repairs, which allow conclusions about the area of repair, were not recognizable during the inspection.

## Comments

Wartungshistorie gemäß Auftraggeber Informationen.

- Winterradsatz ist kein Bestandteil des Auslieferungsumfangs.



Figure 1: Diagonal front (left)



Figure 2: Diagonal front (right)



Figure 3: Diagonal rear (left)



Figure 4: Diagonal rear (right)



Figure 5: Interior - front



Figure 6: Interior - rear



Figure 7: Instrument cluster



Figure 8: Instrument panel



Figure 9: Interior 360° view



Figure 10: Cargo area



Figure 11: VIN



Figure 12: Mounted tyres



Figure 13: Documents



Figure 14: Additional tyres



Figure 15: Navigation

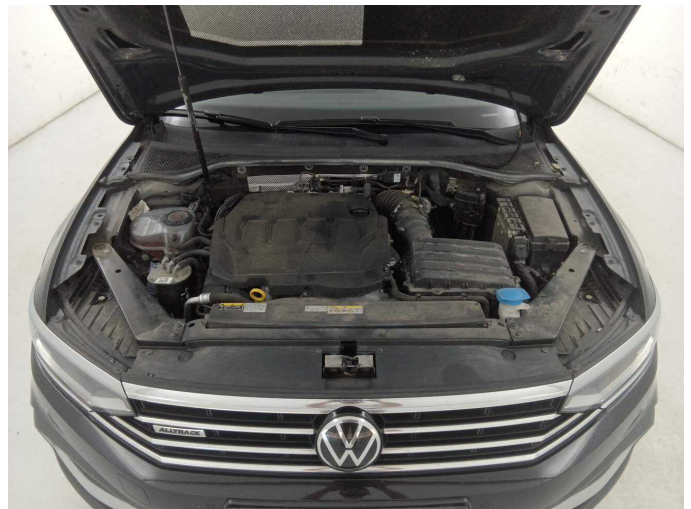


Figure 16: Misc.



Figure 17: Misc.



Figure 18: Misc.



Figure 19: Misc.



Figure 20: Misc.

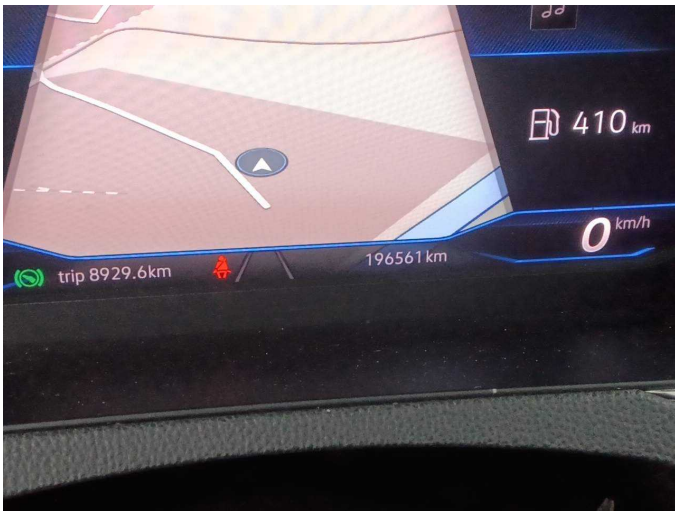


Figure 21: Misc.



Figure 22: Misc.



Figure 23: Misc.



Figure 24: Misc.



Figure 25: Misc.



Damage 1: Door - front left side: Door edge - Scratch(es) - Smart repair



Damage 1: Door - front left side: Door edge - Scratch(es) - Smart repair



Damage 2: Side panel - rear left side: Mudguard - rear left side - dent(s) - Smooth repair work



Damage 2: Side panel - rear left side: Mudguard - rear left side - dent(s) - Smooth repair work



Damage 3: Seat - front: Seat cover - left side - Holes - Smart repair



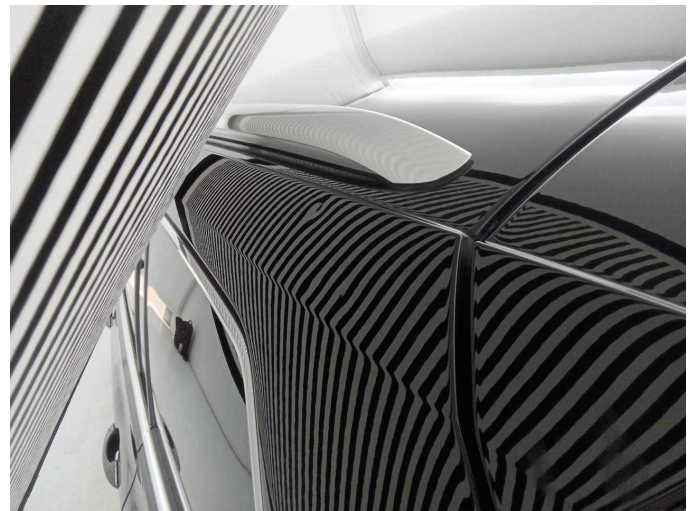
**Damage 3:** Seat - front: Seat cover - left side - Holes - Smart repair



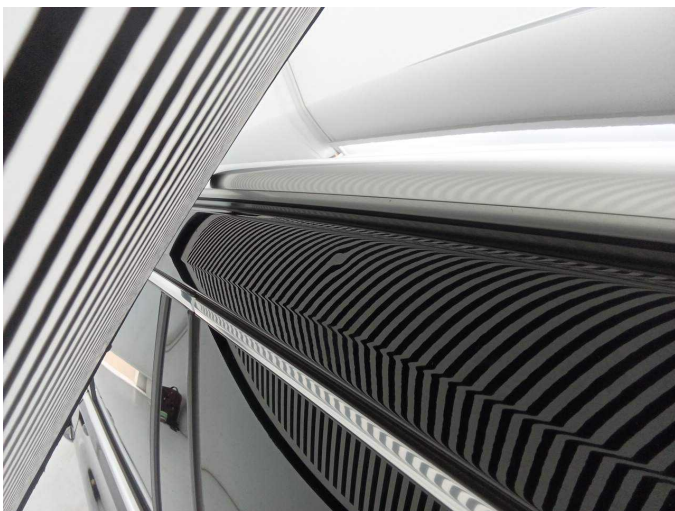
**Damage 4:** Roof: Roof rail - left side - dent(s) - Smooth repair work



**Damage 4:** Roof: Roof rail - left side - dent(s) - Smooth repair work



**Damage 4:** Roof: Roof rail - left side - dent(s) - Smooth repair work



**Damage 4:** Roof: Roof rail - left side - dent(s) - Smooth repair work



**Damage 5:** Side panel - rear left side: Protection strip - Scratch(es) - Replace



**Damage 5:** Side panel - rear left side: Protection strip - Scratch(es) - Replace



**Damage 5:** Side panel - rear left side: Protection strip - Scratch(es) - Replace



**Damage 6:** Side panel - rear left side: Sill - Dent / paintcoat damage - Repair and paint



**Damage 6:** Side panel - rear left side: Sill - Dent / paintcoat damage - Repair and paint



**Damage 6:** Side panel - rear left side: Sill - Dent / paintcoat damage - Repair and paint



**Damage 6:** Side panel - rear left side: Sill - Dent / paintcoat damage - Repair and paint



**Damage 7:** Rear bumper: Rear bumper - Scratch(es) - Paint



**Damage 7:** Rear bumper: Rear bumper - Scratch(es) - Paint



**Damage 7:** Rear bumper: Rear bumper - Scratch(es) - Paint



**Damage 7:** Rear bumper: Rear bumper - Scratch(es) - Paint



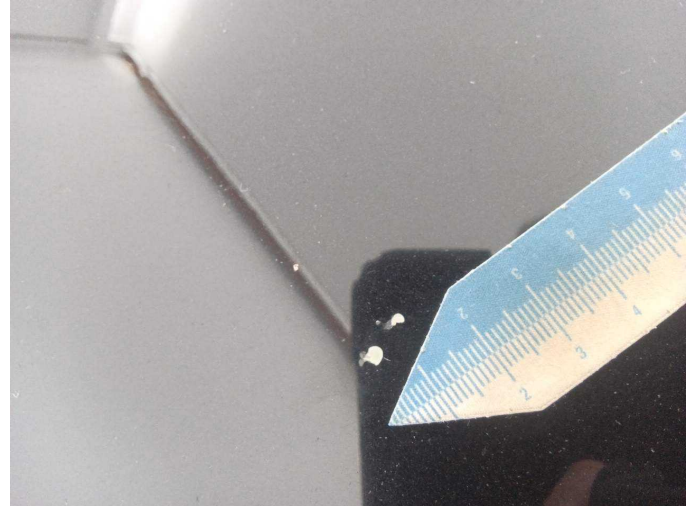
**Damage 8:** Bonnet: Bonnet - Stone chips - Paint



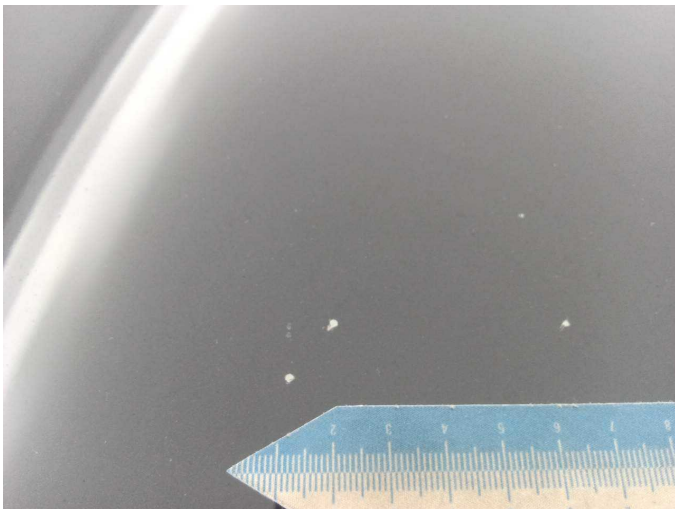
**Damage 8:** Bonnet: Bonnet - Stone chips - Paint



**Damage 8:** Bonnet: Bonnet - Stone chips - Paint



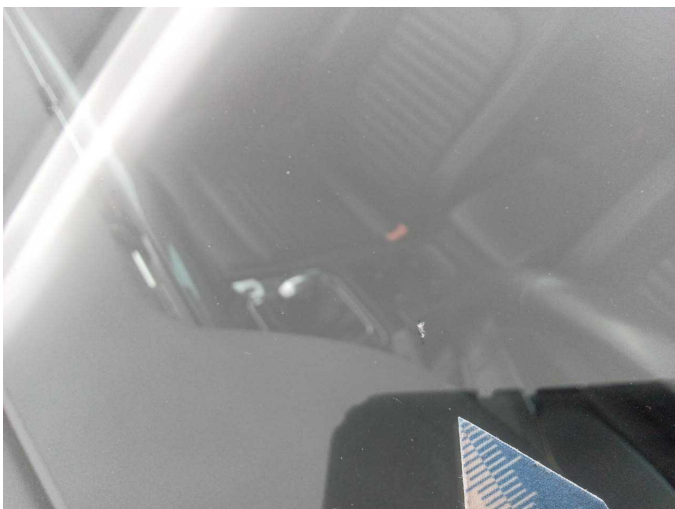
**Damage 8:** Bonnet: Bonnet - Stone chips - Paint



**Damage 8:** Bonnet: Bonnet - Stone chips - Paint



**Wear and tear 1:** Vehicle glazing: Windscreen - Stone chips - No deduction



**Wear and tear 1:** Vehicle glazing: Windscreen - Stone chips - No deduction



**Wear and tear 2:** Front bumper: Front bumper - Stone chips - No deduction



**Wear and tear 2:** Front bumper: Front bumper - Stone chips - No deduction



**Wear and tear 2:** Front bumper: Front bumper - Stone chips - No deduction



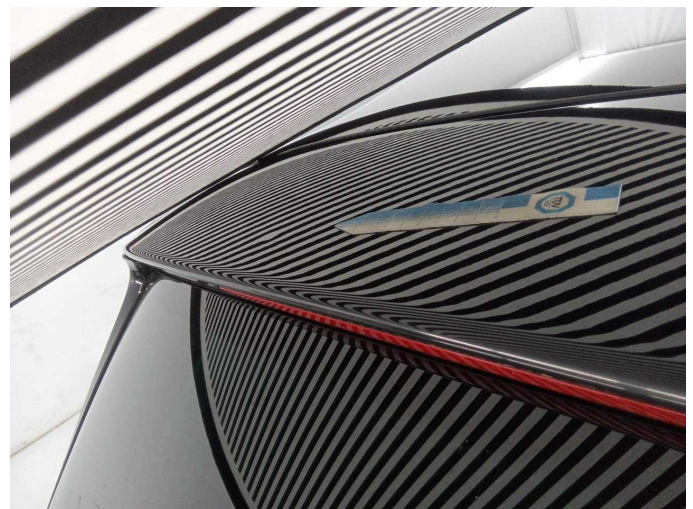
**Wear and tear 3:** Bonnet: Radiator grille - Stone chips - No deduction



**Wear and tear 3:** Bonnet: Radiator grille - Stone chips - No deduction



**Wear and tear 5:** Boot lid / rear door: Boot lid - dent(s) - No deduction



**Wear and tear 5:** Boot lid / rear door: Boot lid - dent(s) - No deduction



**Wear and tear 6:** Bonnet: Bonnet - dent(s) - No deduction



**Wear and tear 6:** Bonnet: Bonnet - dent(s) - No deduction



**Wear and tear 7:** Side panel - rear right side: Sill - dent(s) - No deduction



**Wear and tear 7:** Side panel - rear right side: Sill - dent(s) - No deduction



**Wear and tear 8:** Wheel / tyres: Alloy rim - front right side - Scratch(es) - No deduction



**Wear and tear 8:** Wheel / tyres: Alloy rim - front right side - Scratch(es) - No deduction



# Wartungshistorie

(gemäß Auftraggeber Informationen)

Fahrgestellnummer: WVWZZZ3CZME106312  
Hersteller / Modell: VOLKSWAGEN VOLKSWAGEN Passat Variant 2.0 TDI SCR DSG  
4Motion Alltrack

Datum	KM-Stand	Beschreibung
21.05.2026	196.365	AU; Bremse Sonstiges; Bremsklötze hinten; Bremsscheiben + Klötze h; Bremsscheiben + Klötze v; Bremsscheiben hinten; Keilrippenriemen; Motoröl b. Wartung; Ölfilter ern; Ölwechsel; Reparatur Sonstiges; Schwingungsdämpfer ern; Wartung Sonstiges; Wasserpumpe ern
20.10.2025	175.540	Bremsflüssigkeit; Bremsflüssigkeit ern; Getriebeöl ern/prüfen; Kraftstofffilter ern; Motoröl b. Wartung; Ölfilter ern; Ölwechsel - Hinterachse; Regelwartungsdienst; Reparatur Sonstiges; Systemtest/Eigendiagnose; Wartung Sonstiges
02.07.2025	160.677	Bremse Sonstiges; Bremsklötze hinten; Bremsklötze vorne
14.02.2025	145.860	Motoröl b. Wartung; Ölfilter ern; Regelwartungsdienst; Wartung Sonstiges
05.12.2024	136.912	Bremse Sonstiges; Bremsklötze hinten; Bremsscheiben + Klötze v; Bremsscheiben hinten; Bremsscheiben vorne
29.05.2024	116.731	AU; Getriebeöl ern/prüfen; Luftfiltereinsatz ern; Motoröl b. Wartung; Ölfilter ern; Regelwartungsdienst; Reparatur Sonstiges; Wartung Sonstiges
21.07.2023	88.634	Bremse Sonstiges; Bremsflüssigkeit; Bremsflüssigkeit ern; Bremsklötze hinten; Bremsklötze vorne; Getriebeöl ern/prüfen; Kraftstofffilter ern; Motoröl b. Wartung; Ölfilter ern; Ölwechsel - Hinterachse; Regelwartungsdienst; Systemtest/Eigendiagnose; Wartung Sonstiges
30.11.2022	58.725	Bremse Sonstiges; Bremsklötze hinten; Bremsscheiben + Klötze v; Bremsscheiben vorne; Motoröl b. Wartung; Ölfilter ern; Regelwartungsdienst; Wartung Sonstiges
06.04.2022	29.609	Motoröl b. Wartung; Ölfilter ern; Regelwartungsdienst; Wartung Sonstiges