

Expertise

Protocol number: 45472062
Order No. / Reference: 26354330
Inspection date: 12 May 2026

Manufacturer: Skoda

Model: Superb Combi 2.0 TDI DSG Sportline

VIN: TMBJJ7NPXL7057446



Vehicle details

Manufacturer / Type / Model / Equipment

Skoda Superb Combi 2.0 TDI DSG Sportline

Vehicle Identification number TMBJJ7NPXL7057446

Mileage (Read) 209,235 km

First registration 19 Mar 2020

Number of holders 1

Power / Engine displacement 140 kw / 1,968 ccm

Fuel type / Cylinder Diesel / 4

Gearbox / Number of gears Automatic / 7

Type of drive Front drive

Type of vehicle Station wagon

Colour / colour code Velvet-Rot Premium
Metallic

Doors / Seats 5 / 5

Upholstery type Cloth / leather
combination

Colour of upholstery Black



Vehicle details

Maintenance booklet / proof	digital proof / complete	Next maintenance in	78 Tag(e)
Last service on / at	07/2025 at 181,126 km		
Key is / should be	3 / 3	FZG documents	ZB#2 (B) was available (copy), ZB#1 (S) was not available.
		Letter No.	FU079455
Previous damage / Accident	None detectable	Repainting	None detectable
Inspection conditions	sufficient	Lifting equipment / pit	yes
Test drive	Not performed	Engine function test	Performed
Manufacturer key number/ type code number	8004 / APP 00334		
Emission standard	EURO6;WLTP;DG;PI/CI; M, N1 I	fine dust sticker	
Permitted total weight	2,210 kg	Empty weight	

Tyres

Mounted tyres

#	Tyre size	Type of tyre	Manufacturer	Tread depth
1)	235/40 R19 96W	Summer tyres on Light alloy	Bridgestone	5mm / 5mm
2)	235/40 R19 96W	Summer tyres on Light alloy	Bridgestone	5mm / 5mm

Additional tyres

#	Tyre size	Type of tyre	Manufacturer	Tread depth
1)	215/60 R16 99H	Winter tyres on Light alloy	Bridgestone	6mm / 6mm
2)	215/60 R16 99H	Winter tyres on Light alloy	Bridgestone	6mm / 6mm

Replacement

Typ	Tyre size	Type of tyre	Manufacturer	Tread depth
N	125/70 R18 99M	Summer tyres on Steel	Sonstige	4 mm

Legend: Tread depth information for the left tire is listed first, for the right tire it is listed second on the axle in the direction of travel.



Equipment

Standard equipment

- Storage compartments
- Airbag, driver and switchable passenger airbag
- Airbag, head airbags
- Anti-lock braking system (ABS)
- Dashboard in black / black, door trim in black
- Electrically folding exterior mirrors
- Hill start assist
- black headliner
- Sportline decorative inlay
- Tachometer
- Dynamic Light Assistant (Masked Continuous High Beam)
- Electric tailgate opening
- Electronic transverse differential lock (XDS+)
- Driving light assistant and rain sensor
- Chassis: Adaptive chassis DCC (10 mm lowering, adjustable damper setting)
- Front radar assistant including city emergency braking function
- Transmission: 7-speed dual-clutch transmission (DSG)
- Green tec: Start/stop system including brake energy recuperation
- Rear spoiler
- Kessy, keyless entry and start-stop system
- Air Care Climatronic air conditioning system (3 zones)
- Headrests integrated into front seats, rear headrests height-adjustable
- Metal loading sill protector
- Remote release of the rear seat backrests in the trunk
- Steering wheel: height and reach adjustable
- Reading lights at the front and rear of the headliner
- Rear center armrest with cup holders and pass-through option
- Color multifunction display in the instrument cluster
- LED fog lights with integrated cornering lights
- Upholstery: Alcantara trim in sport black
- Radio accessories: 2 USB-A ports in the center console
- Radio accessories: In-car communication
- Tire pressure monitoring
- Heated windshield washer nozzles
- Superb seat belts
- Seats: Adjustable lumbar support in the front seats
- Seats: Height-adjustable front seats
- Seats: Rear seat backrest split 60:40, foldable
- SKODA Care Connect
- 12V socket in the trunk
- 12V socket in the center console, front and rear
- Telephone: Comfort hands-free telephone system
- Clock display on the rear center console
- Lashing eyes in the trunk
- Central locking with remote control
- Removable LED rechargeable flashlight in the trunk
- Airbag, driver's knee airbag
- Airbag, front side airbags
- Traction control (ASR)
- Electrically adjustable and heated exterior mirrors
- Illuminated glove compartment
- Hydraulic brake assist (HBA)
- Roof rails, painted in glossy black
- Diesel particulate filter and SCR catalyst
- Third brake light
- stainless steel pedals
- Electronic parking brake including auto-hold function
- Electronic Stability Control (ESC)
- Driving profile selection including customizable key (Normal, Eco, Sport, Individual)
- Electric windows front and rear, including anti-pinch protection and child safety lock
- Front and rear footwell lighting
- Tinted windows
- Heated rear window
- Rear window wiper including windshield washer system
- ISOFIX preparation on the outer rear seats, including top tether
- Boot cover, roll-up and removable, semi-automatic
- Radiator grille slats, frame, side moldings, exterior mirror caps, window surrounds in black
- LED ambient lighting
- Steering wheel: Three-spoke leather steering wheel in a sporty design with multifunction and shift buttons
- Matrix LED headlights
- Front center armrest with storage compartment
- Engine drag torque control (MSR)
- Multi-collision brake
- Rear parking sensors
- Radio: Bolero music system
- Radio accessories: Digital radio reception DAB+
- Radio accessories: SmartLink+
- Wheels: 19" Vega alloy wheels, diamond-cut/anthracite
- Electromechanical power steering
- Seats: Heated front seats
- Seats: Electrically adjustable front seats with memory function
- Seats: Front sports seats
- Sun visor on driver and passenger side with illuminated make-up mirror
- Sunset (rear window and rear side windows tinted dark)
- Textile floor mats
- Chrome-plated elements
- Immobiliser



Extra equipment

- Adaptive Cruise Control (ACC) (control range up to 210 km/h) (replaces cruise control)
- Digital instrument cluster (Virtual Cockpit) 10.2"
- Package: Business Columbus (Combi) (Columbus dynamic radio navigation system, capacitive 9.2" touchscreen, color multifunction display in the instrument cluster, traffic sign recognition, Wi-Fi hotspot, DVD drive, 2 SD card slots, premium hands-free system, rSAP with SIM card slot (LTE support), phone box with inductive charging function (connection via external antenna), voice control, driver fatigue detection, 230 V socket, USB ports, tablet holder in the rear, Sunset Infotainment Online (3 years), heated steering wheel, heated outer rear seats, luggage net partition)
- Variable loading floor in the trunk including organizer and aluminum crossbars
- Swiveling trailer hitch including trailer stabilization
- Heated windshield
- Paint finish: Premium paint finish
- Front and rear parking sensors
- Progressive steering (adjustment of the steering angle depending on the speed)
- Wheels: 16" steel spare wheel including jack (6.5J x 16 ET41, tires 205/55 R16 - wheel bolt wrench - tire mobility kit omitted)
- Reversing camera with washer nozzle
- Sunshade roller blind for the rear side windows
- Lane Assist, Blind Spot Detection and Rear Traffic Alert (The Rear Traffic Alert provides visual and audible warnings when obstacles such as pedestrians or other vehicles are detected. In emergencies, automatic braking prevents an impending collision.)

Brief expert findings

Documents submitted	At the time of the inspection, the vehicle registration certificate Part 2 (title) was available, but the vehicle registration certificate Part 1 (document) was not. (Copy)
VIN comparison	The vehicle identification number (VIN) was read from the vehicle and its conformity with the submitted documents was confirmed by the undersigned during the inspection.
Inspection	The inspection conditions were sufficient for the assessment of the vehicle. Lifting equipment and/or a pit were available for examining the vehicle.
Test drive	No test drive/shunting maneuver was carried out during the inspection of the vehicle.
Engine function test	An engine test run was performed.

Value reducing factors

No.	Component group	Description
1	Misc.	Main inspection - No evidence - No deduction
2	Engine	Toothed belt (in 665 km fällig) - No evidence - No deduction
3	Seat - front	Backrest cover - left side - Scratch(es) - Smart repair
4	Side panel - rear right side	Side panel - Scratch(es) - Paint
5	Bonnet	Bonnet (+ Vogelkotverätzung) - Stone chips - Paint
6	Rear bumper	Rear bumper - Scratch(es) - Paint
7	Front bumper	Front bumper - Stone chips - Paint

Wear and tear

No.	Component group	Description
1	Door - front right side	Door - Scratch(es) - No deduction
2	Side panel - rear left side	Side panel - Stone chips - No deduction
3	Door - front left side	Door - Scratch(es) - No deduction

The vehicle shows signs of wear and tear commensurate with its age and use.

Missing parts

Description

Equipment - Umbrella



Order/Scope of Order

An order was placed to prepare a sales report for the described vehicle. This report includes the following:

- Description of key vehicle information
- Documentation of equipment features
(Delivery by third-party service providers)
- Documentation of damage, defects, missing parts
- Documentation of prior damage, unrepaired prior damage, repainting
- A brief visual or functional inspection of the equipment details, if possible.
(Functional testing of driver assistance systems is not included in the scope of services!)
- a photographic documentation of the vehicle

Basis for the order

This product is based on the guidelines for vehicle returns and valuations published by Alphabet Fleet GmbH. The expert makes the specific findings in each individual case objectively, within the framework of the prescribed standards, based on their own expertise.

The vehicle inspection takes place in a fully assembled, unassembled state.

Damage or defects that can only be detected during disassembly/diagnostic work or through further investigation remain within the realm of prognostic risk. An increased risk exists due to concealed defects caused by fraudulent misrepresentation and which were not identifiable by the expert.

Damage or defects resulting from normal use or wear and tear of the vehicle will be accepted in accordance with the applicable standard.

There was no explicit identification or monetary consideration of the expected features within the product.

Features which, in their nature and extent, slightly exceed normal use but do not constitute unacceptable damage, will be documented and indicated as signs of wear, if applicable.

Damage or defects that, according to the applicable standard, can no longer be attributed to normal use or wear and tear are listed under "Value Reducing Factors" in the product description.

Depending on the product specification, a monetary ID can be provided. If this takes place, the costs can be 100% or pro rata depending on the vehicle's age and mileage.

Previous damages

No apparent prior damage that had been repaired could be found on the vehicle.

Comments

Der montierte Radsatz ist nicht Bestandteil der Ausstattung.

Wartungshistorie gemäß Auftraggeber Informationen.



Figure 1: Diagonal front (left)



Figure 2: Diagonal front (right)



Figure 3: Diagonal rear (left)



Figure 4: Diagonal rear (right)



Figure 5: Interior - front

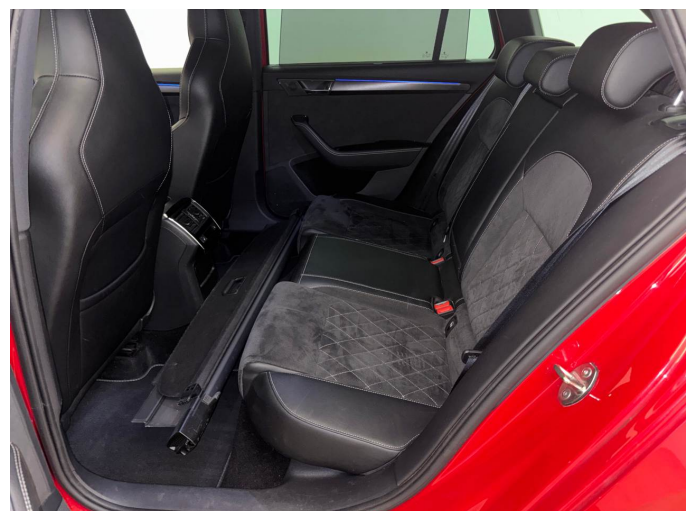


Figure 6: Interior - rear



Figure 7: Instrument cluster



Figure 8: Instrument panel



Figure 9: Interior 360° view



Figure 10: Cargo area



Figure 11: VIN



Figure 12: Mounted tyres



Figure 13: Documents



Figure 14: Additional tyres



Figure 15: Navigation



Figure 16: Misc.

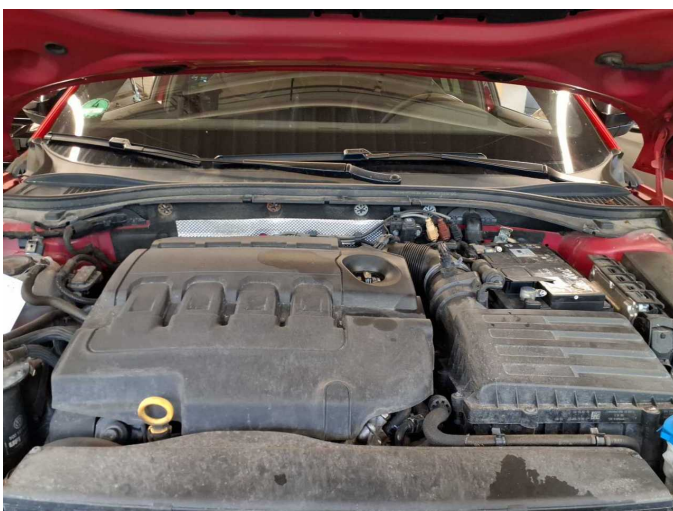


Figure 17: Misc.

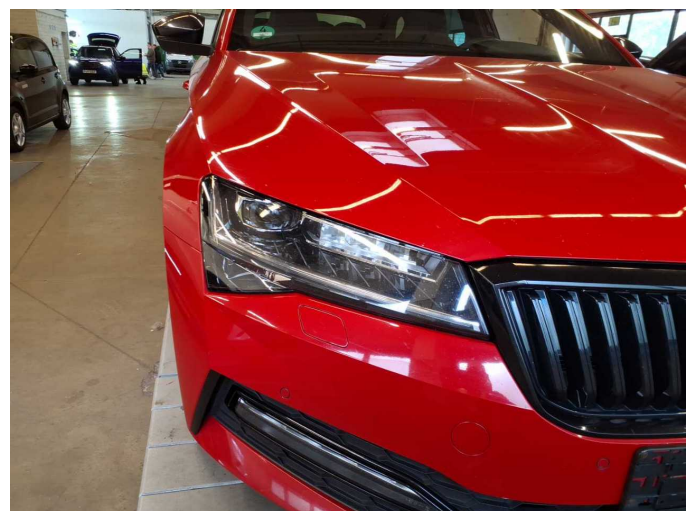


Figure 18: Misc.



Figure 19: Misc.



Figure 20: Misc.



Figure 21: Misc.

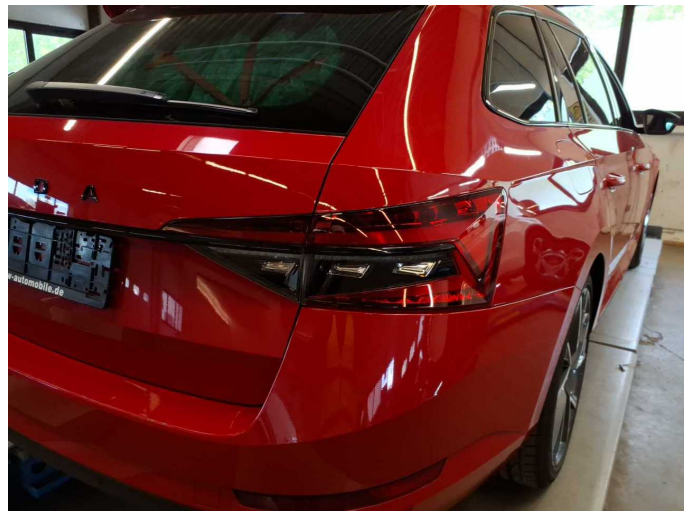


Figure 22: Misc.



Figure 23: Misc.



Figure 24: Misc.



Figure 25: Misc.



Figure 26: Misc.



Figure 27: Misc.

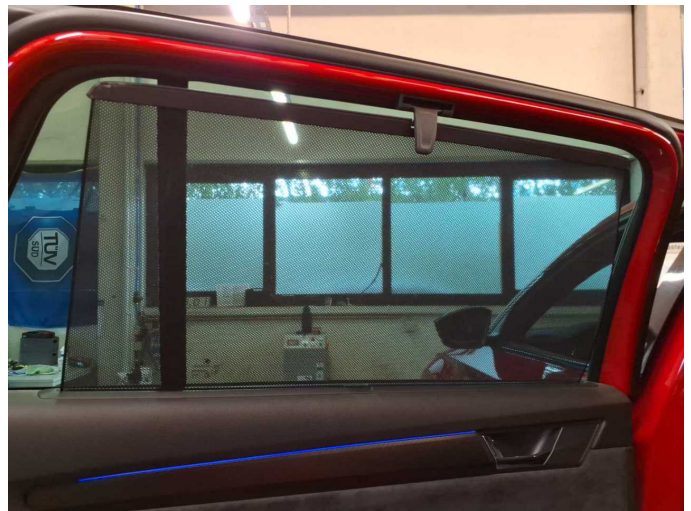


Figure 28: Misc.



Figure 29: Misc.



Figure 30: Misc.



Figure 31: Misc.



Figure 32: Misc.



Figure 33: Misc.



Figure 34: Misc.



Figure 35: Misc.



Figure 36: Misc.



Figure 37: Misc.



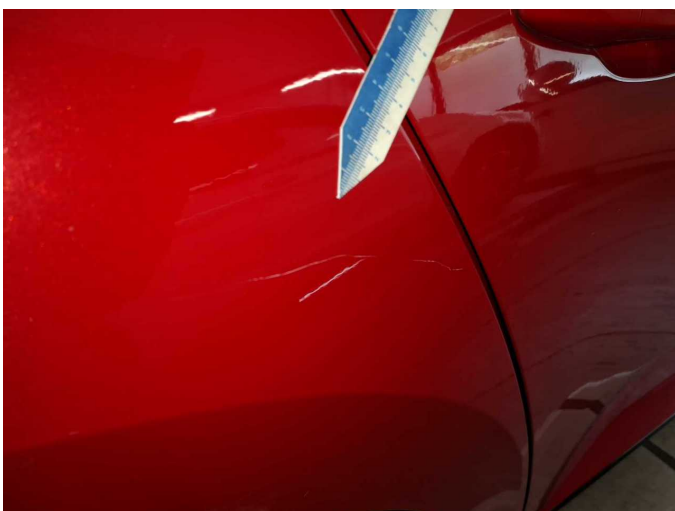
Damage 3: Seat - front: Backrest cover - left side - Scratch(es) - Smart repair



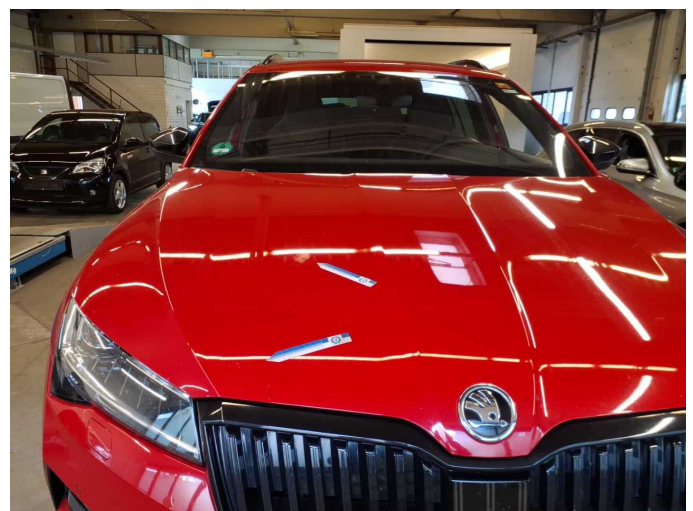
Damage 4: Side panel - rear right side: Side panel - Scratch(es) - Paint



Damage 4: Side panel - rear right side: Side panel - Scratch(es) - Paint



Damage 4: Side panel - rear right side: Side panel - Scratch(es) - Paint



Damage 5: Bonnet: Bonnet (+ Vogelkotverätzung) - Stone chips - Paint



Damage 5: Bonnet: Bonnet (+ Vogelkotverätzung) - Stone chips - Paint



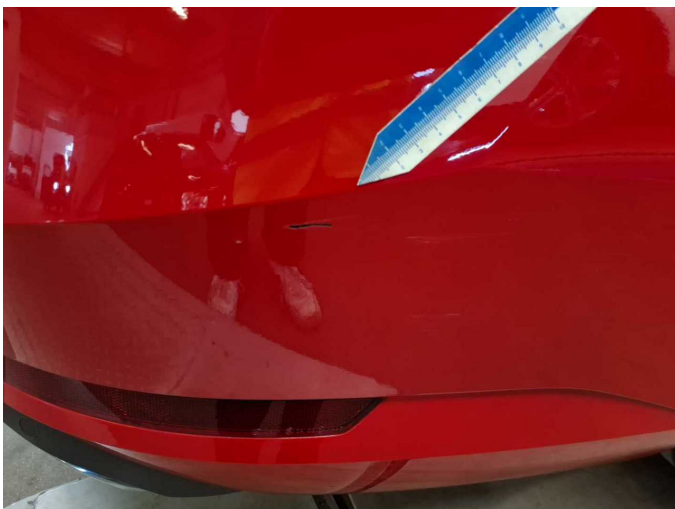
Damage 5: Bonnet: Bonnet (+ Vogelkotverätzung) - Stone chips - Paint



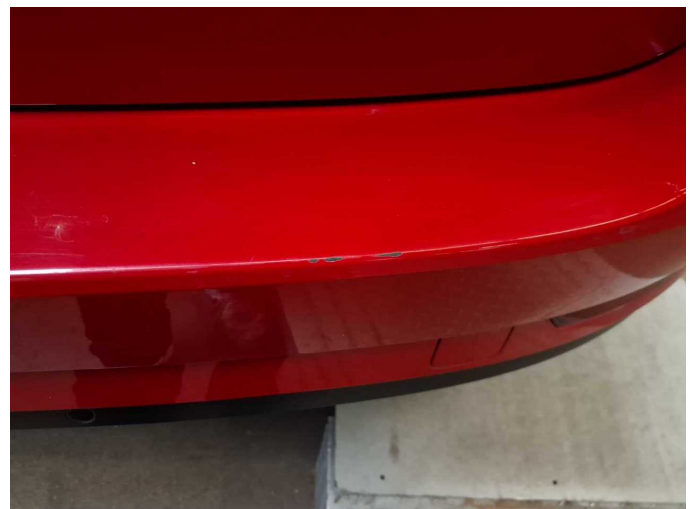
Damage 5: Bonnet: Bonnet (+ Vogelkotverätzung) - Stone chips - Paint



Damage 6: Rear bumper: Rear bumper - Scratch(es) - Paint



Damage 6: Rear bumper: Rear bumper - Scratch(es) - Paint



Damage 6: Rear bumper: Rear bumper - Scratch(es) - Paint



Damage 7: Front bumper: Front bumper - Stone chips - Paint



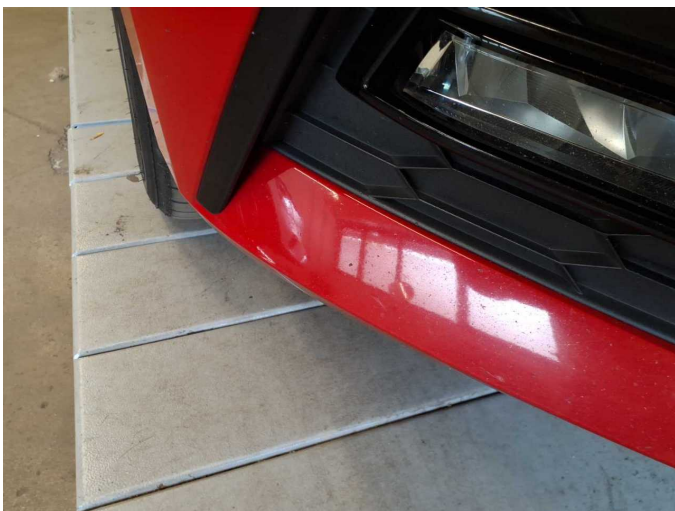
Damage 7: Front bumper: Front bumper - Stone chips - Paint



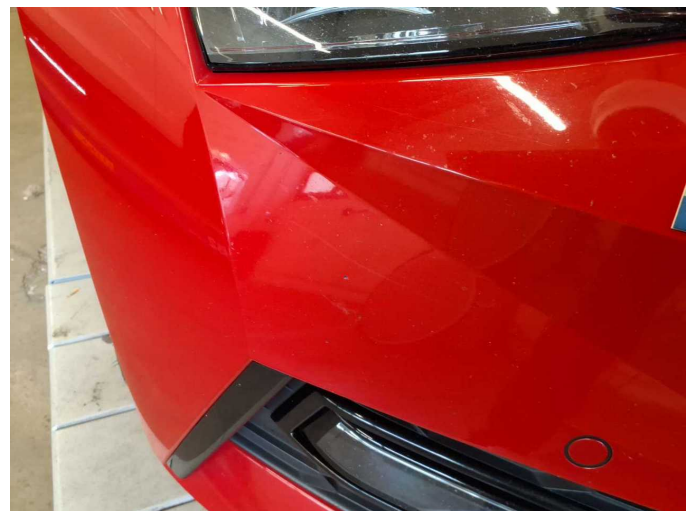
Damage 7: Front bumper: Front bumper - Stone chips - Paint



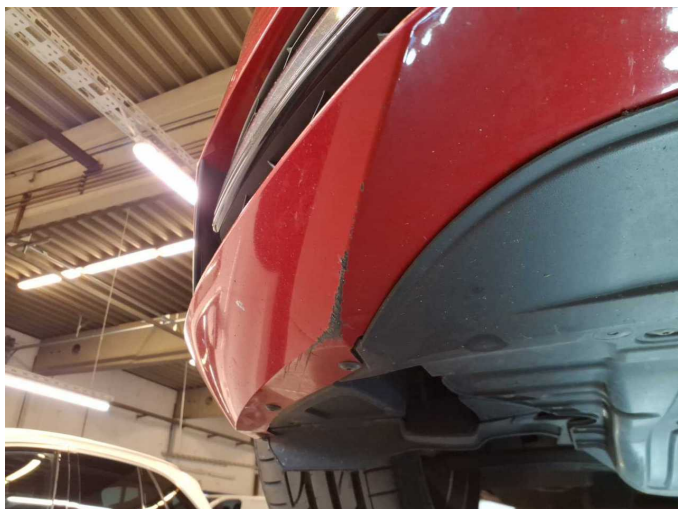
Damage 7: Front bumper: Front bumper - Stone chips - Paint



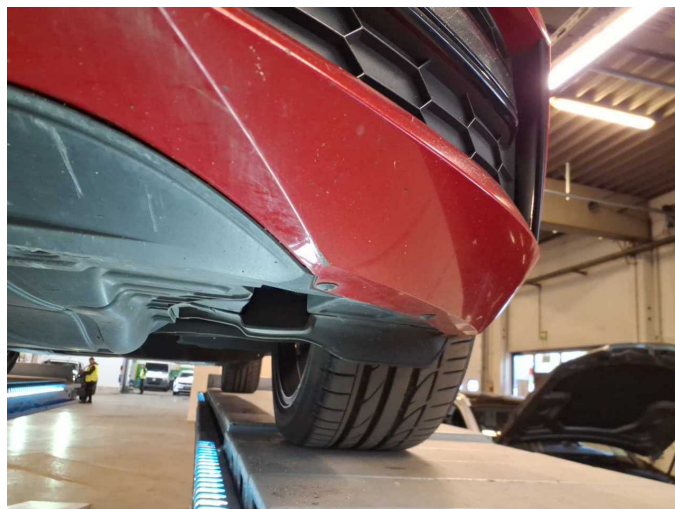
Damage 7: Front bumper: Front bumper - Stone chips - Paint



Damage 7: Front bumper: Front bumper - Stone chips - Paint



Damage 7: Front bumper: Front bumper - Stone chips - Paint



Damage 7: Front bumper: Front bumper - Stone chips - Paint



Missing part 1: Equipment: Umbrella - Missing - Replace



Wartungshistorie

(gemäß Auftraggeber Informationen)

Fahrgestellnummer: TMBJJ7NPXL7057446
Hersteller / Modell: SKODA SKODA Superb Combi 2.0 TDI DSG Sportline

Datum	KM-Stand	Beschreibung
30.07.2025	181.126	Bremse Sonstiges; Bremsflüssigkeit; Bremsflüssigkeit ern; Bremsklötze hinten; Bremsklötze vorne; Bremsscheiben hinten; Bremsscheiben vorne; Kraftstofffilter ern; Luftfiltereinsatz ern; Motoröl b. Wartung; Ölfilter ern; Regelwartungsdienst; Reparatur Sonstiges; Wartung Sonstiges
11.03.2025	167.377	Systemtest/Eigendiagnose
05.03.2025	166.173	Batterie ern; Systemtest/Eigendiagnose
25.02.2025	160.000	Systemtest/Eigendiagnose
07.11.2024	150.635	Motoröl b. Wartung; Ölfilter ern; Regelwartungsdienst; Reparatur Sonstiges; Wartung Sonstiges
20.12.2023	121.332	Bremse Sonstiges; Bremsklötze hinten; Bremsklötze vorne; Bremsscheiben hinten; Bremsscheiben vorne; Getriebeöl ern/prüfen; Motoröl b. Wartung; Ölfilter ern; Regelwartungsdienst; Wartung Sonstiges
02.03.2023	90.676	Bremsflüssigkeit; Bremsflüssigkeit ern; Kraftstofffilter ern; Luftfiltereinsatz ern; Motoröl b. Wartung; Ölfilter ern; Regelwartungsdienst; Wartung Sonstiges
08.04.2022	60.730	Bremse Sonstiges; Bremsklötze hinten; Bremsklötze vorne; Bremsscheiben hinten; Bremsscheiben vorne; Motoröl b. Wartung; Ölfilter ern; Regelwartungsdienst; Wartung Sonstiges
23.06.2021	30.235	Motoröl b. Wartung; Ölfilter ern; Regelwartungsdienst; Wartung Sonstiges