

## Expertise

Protocol number: 46170579  
Order No. / Reference: 26535447  
Inspection date: 22 Jun 2026

Manufacturer: Peugeot

Model: 208 BlueHDi 100 GT

VIN: VR3UBYHTKP5146839



### Vehicle details

#### Manufacturer / Type / Model / Equipment

Peugeot 208 BlueHDi 100 GT

**Vehicle Identification number** VR3UBYHTKP5146839

**Mileage (Read)** 27,288 km

**First registration** 22 May 2024

**Number of holders** 1

**Next periodical technical inspection** 05/2027  
(Report not on hand)

**Power / Engine displacement** 75 kw / 1,499 ccm

**Fuel type / Cylinder** Diesel / 4

**Gearbox / Number of gears** Manual / 6

**Type of drive** Front drive

**Type of vehicle** Saloon car

**Colour / colour code** Grey Metallic

**Doors / Seats** 5 / 5

**Upholstery type** Alcantara / Leather

**Colour of upholstery** Anthracite-Grey



## Vehicle details

<b>Maintenance booklet / proof</b>	Available / complete	<b>Next maintenance in</b>	7 Tag(e)
<b>Key is / should be</b>	2 / 2	<b>FZG documents</b>	ZB#2 (B) was available (copy), ZB#1 (S) was not available.
		<b>Letter No.</b>	GS947023
<b>Previous damage / Accident</b>	Detectable	<b>Repainting</b>	None detectable
<b>Inspection conditions</b>	sufficient	<b>Lifting equipment / pit</b>	No
<b>Test drive</b>	Not performed	<b>Engine function test</b>	Performed
<b>Manufacturer key number/ type code number</b>	1889 / ABP 00214		
<b>Emission standard</b>	EURO6;WLTP;AP;PI/CI; M, N1 I	<b>fine dust sticker</b>	
<b>Permitted total weight</b>	1,650 kg	<b>Empty weight</b>	

## Tyres

### Mounted tyres

#	Tyre size	Type of tyre	Manufacturer	Tread depth
1)	205/45 R17 88V	All-season tyres on Light alloy	Kumho	6mm / 6mm
2)	205/45 R17 88V	All-season tyres on Light alloy	Kumho	6mm / 6mm

### Replacement

Typ	Tyre size	Type of tyre	Manufacturer	Tread depth
N	125/80 R15 95M	Summer tyres on Steel	Uniroyal	4 mm

**Legend: Tread depth information for the left tire is listed first, for the right tire it is listed second on the axle in the direction of travel.**

TÜV SÜD Auto Partner GmbH  
Wiesenring 2  
04159 Leipzig

Inspection location  
Hartmann Fleet Professionals GmbH  
Leerenstraße 25  
29683 Bad Fallingbommel



## Equipment



## Standard equipment

- Storage compartment with smartphone holder
- Active Safety Brake
- Airbag: Front side airbag
- Airbag: Curtain airbags front and rear
- Electrically adjustable and heated exterior mirrors with integrated LED turn signals
- Hill start assist
- Turn signals with lane change indicator function
- third brake light
- Digital 3D instrument cluster with high-resolution 10" screen, adjustable and customizable
- EBV (Electronic Brakeforce Distribution)
- Rear parking aid, acoustic and visual
- Front parking aid, acoustic and visual
- ESP (Electronic Stability Program) with ASR (Anti-Slip Regulation)
- Driving mode selector (Sport - Normal - Eco)
- Misfueling protection
- Electric front windows (with comfort operation and anti-pinch protection)
- electric parking brake
- Front collision warning
- Full LED headlights (automatic headlight range control - LED turn signals at the front)
- Transmission: 6-speed manual transmission
- Green decorative stitching on the dashboard, steering wheel and the armrests of the front and rear doors
- rear window wiper
- Rear spoiler, glossy black
- Frameless interior mirror
- Map pockets on the front seatbacks
- Automatic climate control with activated carbon filter
- Radiator grille with chrome applications
- White LED lighting on the center console and in the front footwell
- LED taillights
- Steering wheel adjustable for height and reach
- light sensor
- Illuminated makeup mirrors for driver and front passenger
- Fatigue warning
- Emergency brake assist (with automatic activation of the hazard warning lights)
- Particulate filter: FAP diesel particulate filter
- Aluminum pedals and stainless steel door sills (with PEUGEOT lettering)
- Pollen filter
- Upholstery: Fabric/faux leather (Capy)
- Radio: RCC audio system (mono tuner - 6 speakers - MP3-compatible - Bluetooth hands-free system with audio streaming via Bluetooth - USB port - operation via steering wheel and touchscreen)
- Wheel arches in glossy black
- Rain sensor
- ABS (Anti-lock Braking System)
- Airbag for driver and front passenger (passenger airbag can be deactivated)
- Electrically folding exterior mirrors with LED approach lighting
- Exterior mirror caps Perla Nera Black
- Trim panel between the taillights in glossy black
- On-board computer
- Black headliner
- Tachometer
- Three-point seat belts at all seating positions (three-point seat belts with belt locks, pyrotechnic belt tensioners, warning light and warning signal when the seat belt is not fastened or is released for driver and front passenger, three-point seat belts, belt force limiters on the side seats, Isofix child seat anchors on the outer seats, warning light and warning signal when the seat belt is released)
- Electric rear windows (with comfort operation and anti-pinch protection)
- High beam assist
- Follow-me-home function (automatic)
- noise-reducing windshield
- Front and rear floor mats with decorative stitching in green
- Cruise control system with speed limiter
- Cup holder in the center console
- GT logo on the trunk lid
- Heated rear window
- Rear apron in black
- Interior mirror automatically dimming
- ISOFIX child seat anchors (on the front passenger seat)
- Manual child lock
- Headrests (5)
- LED ambient lighting on the dashboard and door panels (adjustable in 8 colors)
- LED ceiling lighting at the front (2 reading lights at the front and rear)
- Steering wheel: Small multifunction leather steering wheel, flattened at the top and bottom.
- Front center armrests (with storage compartment)
- Navigation system: 3D navigation system NAC incl. 3D instrument cluster (3D navigation including 3D display of buildings and monuments - voice recognition for navigation, telephone & media - touchscreen operation - map transfer to the digital 3D instrument cluster - real-time navigation. TomTom service - multifunctional touchscreen. 10" HD color screen - incl. PEUGEOT Connect Box with the free telematics services PGT Connect SOS & PGT Connect Assistance - GPS module - integrated European SIM card - speaker and microphone - emergency battery)
- Radio accessories: Digital radio reception DAB+



- Tire pressure monitoring system
- Wheels: 17" "Bronx" alloy wheels, two-tone, including 15" spare wheel (tires 205/45 R17 81H)
- Reversing camera with 180° surround view
- Rear seat backrest 40/60 split folding
- Keyless start system
- Electric power steering
- Seats: Driver's seat height adjustable
- 12-volt socket in the trunk
- Daytime running lights: LED daytime running lights
- Doors lock automatically when driving off
- Immobiliser
- Central locking system, activatable from inside via remote control (doors lock automatically when driving off)

- Radio accessories: Mirror Screen (transmission of multimedia content and apps from a compatible smartphone to the vehicle's touchscreen, allowing direct control of compatible functions and apps - Android Auto and Mirror Link (for compatible smartphone models with Android operating system) - CarPlay (for compatible iPhone models from Apple))
- Shift point indicator
- Side and rear windows are more heavily tinted.
- Seats: Passenger seat height adjustable
- Lane keeping assist with steering intervention
- Stop&Start system (automatic)
- Door handles painted in car color
- Traffic sign recognition (with display of the speed recommendation in the instrument cluster)
- Decorative strip below the side windows in glossy black

### Extra equipment

- Paint finish: Special metallic paint
- Seats: Heated front seats, adjustable in three stages
- Blind spot assist

- Package: Alcantara Package (Alcantara/artificial leather in black with decorative stitching in green - front seat heating, adjustable in 3 stages - driver's seat electrically adjustable, with massage function - electric lumbar support on the driver's side)

### Brief expert findings

Documents submitted	At the time of the inspection, the vehicle registration certificate Part 2 (title) was available, but the vehicle registration certificate Part 1 (document) was not. (Copy)
VIN comparison	The vehicle identification number (VIN) was read from the vehicle and its conformity with the submitted documents was confirmed by the undersigned during the inspection.
Inspection	The inspection conditions were sufficient for the assessment of the vehicle. No lifting equipment or pit was available for inspecting the vehicle. Therefore, inspection of the vehicle's underside was only possible to a limited extent.
Test drive	No test drive/shunting maneuver was carried out during the inspection of the vehicle.
Engine function test	An engine test run was performed.

### Value reducing factors

No.	Component group	Description
1	Misc.	Inspection / maintenance - No evidence - No deduction
2	Sill - left side	Sill - Scratch(es) - Smart repair
3	Wheel / tyres	Alloy rim - rear left side - Scratch(es) - Loss in value
4	Wheel / tyres	Alloy rim - rear right side - Scratch(es) - Loss in value
5	Wheel / tyres	Alloy rim - front right side - Scratch(es) - Loss in value
6	Body	Body - Damage by hail - repair according to calculation

### Wear and tear

No.	Component group	Description
1	Vehicle glazing	Windscreen - Stone chips - No deduction
2	Bonnet	Bonnet - Stone chips - No deduction
3	Front bumper	Front bumper - Stone chips - No deduction
4	Door - front left side	Door edge - Scratch(es) - Smart repair

The vehicle shows signs of wear and tear commensurate with its age and use.



## Accident damages

### No. Accident

1 Side - left

## Order/Scope of Order

An order was placed to prepare a sales report for the described vehicle. This report includes the following:

- Description of key vehicle information
- Documentation of equipment features  
(*Delivery by third-party service providers*)
- Documentation of damage, defects, missing parts
- Documentation of prior damage, unrepaired prior damage, repainting
- A brief visual or functional inspection of the equipment details, if possible.  
(*Functional testing of driver assistance systems is not included in the scope of services!*)
- a photographic documentation of the vehicle

## Basis for the order

This product is based on the guidelines for vehicle returns and valuations published by Alphabet Fleet GmbH. The expert makes the specific findings in each individual case objectively, within the framework of the prescribed standards, based on their own expertise.

The vehicle inspection takes place in a fully assembled, unassembled state.

Damage or defects that can only be detected during disassembly/diagnostic work or through further investigation remain within the realm of prognostic risk. An increased risk exists due to concealed defects caused by fraudulent misrepresentation and which were not identifiable by the expert.

Damage or defects resulting from normal use or wear and tear of the vehicle will be accepted in accordance with the applicable standard.

There was no explicit identification or monetary consideration of the expected features within the product.

Features which, in their nature and extent, slightly exceed normal use but do not constitute unacceptable damage, will be documented and indicated as signs of wear, if applicable.

Damage or defects that, according to the applicable standard, can no longer be attributed to normal use or wear and tear are listed under "Value Reducing Factors" in the product description.

Depending on the product specification, a monetary ID can be provided. If this takes place, the costs can be 100% d or pro rata depending on the vehicle's age and mileage.

## Previous damages

Non-repaired previous damages were found at the vehicle. The necessary repair costs are listed in the expert report or if necessary, are listed in detail in a separately enclosed repair cost calculation.

## Comments

Die beigefügte Reparaturkostenkalkulation wurde nach bestem Wissen und Gewissen unter eingeschränkten Besichtigungsbedingung im demontagefreien Zustand erstellt. Es können aufgrund verdeckter Beschädigung erhebliche Mehrkosten und somit Abweichung der für den Unfall ausgewiesenen Reparaturkosten nicht ausgeschlossen werden.

Die beigefügte Reparaturkostenkalkulation wurde nach bestem Wissen und Gewissen im demontagefreien Zustand erstellt. Es können Mehrkosten und somit Abweichung der für den Hagelschaden ausgewiesener Reparaturkosten nicht ausgeschlossen werden.



Figure 1: Diagonal front (left)



Figure 2: Diagonal front (right)



Figure 3: Diagonal rear (left)



Figure 4: Diagonal rear (right)



Figure 5: Interior - front



Figure 6: Interior - rear



Figure 7: Instrument cluster



Figure 8: Instrument panel



Figure 9: Interior 360° view



Figure 10: Cargo area

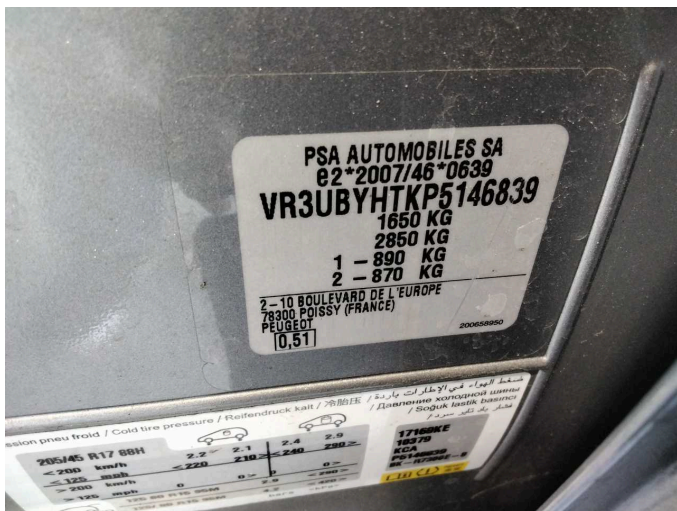


Figure 11: VIN



Figure 12: Mounted tyres

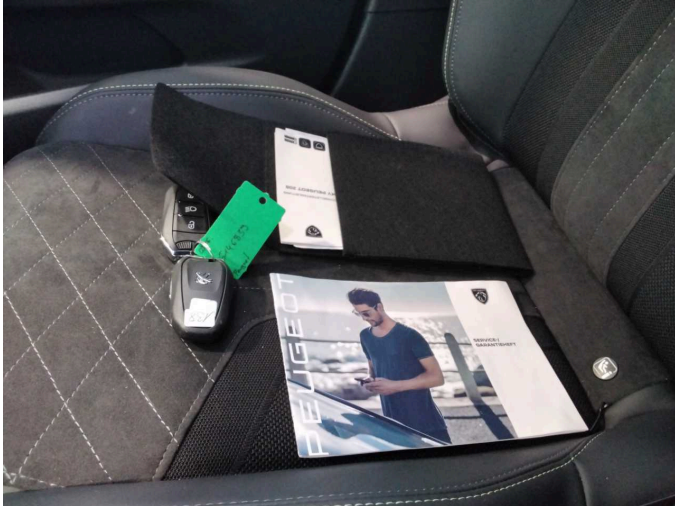


Figure 13: Documents

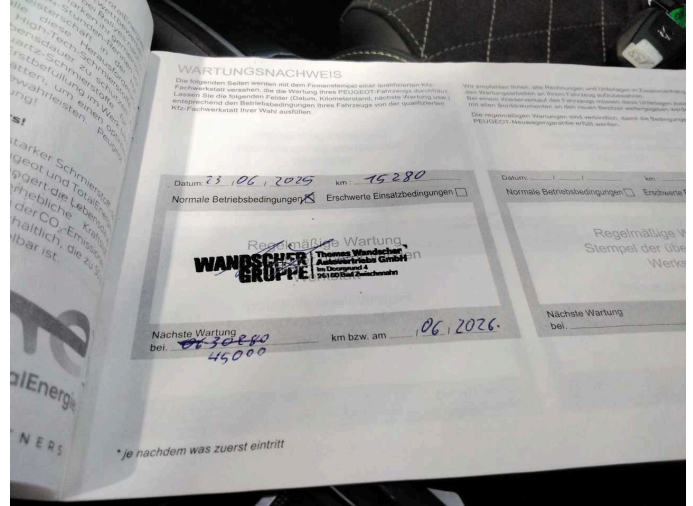


Figure 14: Documents



Figure 15: Navigation



Figure 16: Misc.

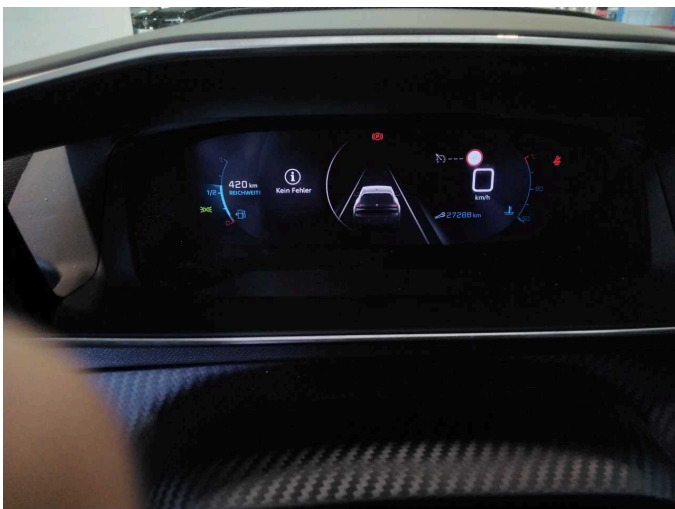


Figure 17: Misc.



Figure 18: Misc.



Figure 19: Misc.



Figure 20: Misc.



Figure 21: Misc.



Figure 22: Misc.



Figure 23: Misc.



Figure 24: Misc.



Figure 25: Misc.



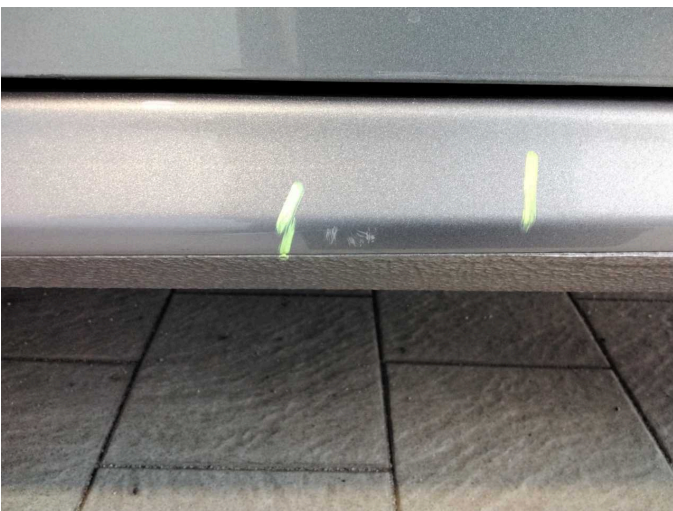
Figure 26: Misc.



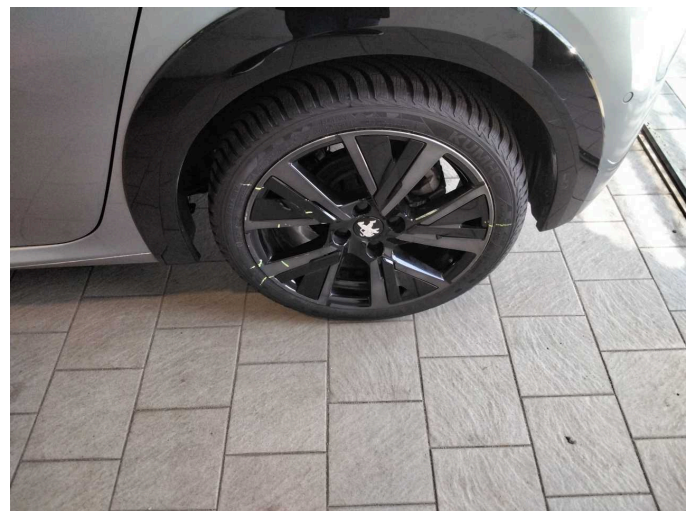
Figure 27: Misc.



Damage 2: Sill - left side: Sill - Scratch(es) - Smart repair



Damage 2: Sill - left side: Sill - Scratch(es) - Smart repair



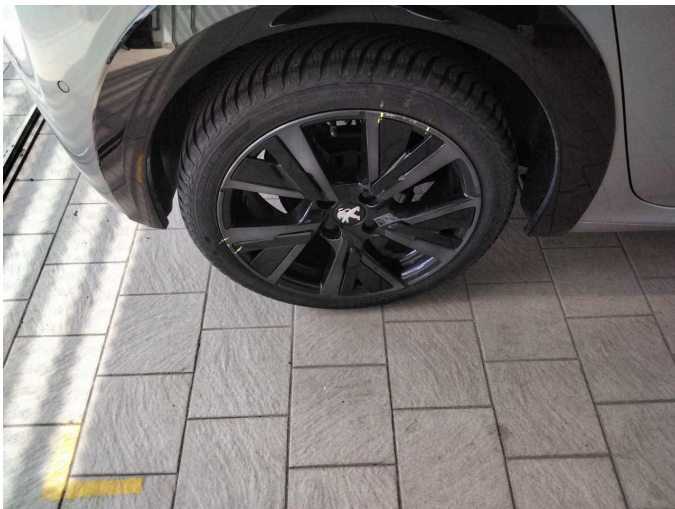
Damage 3: Wheel / tyres: Alloy rim - rear left side - Scratch(es) - Loss in value



**Damage 3:** Wheel / tyres: Alloy rim - rear left side - Scratch(es) - Loss in value



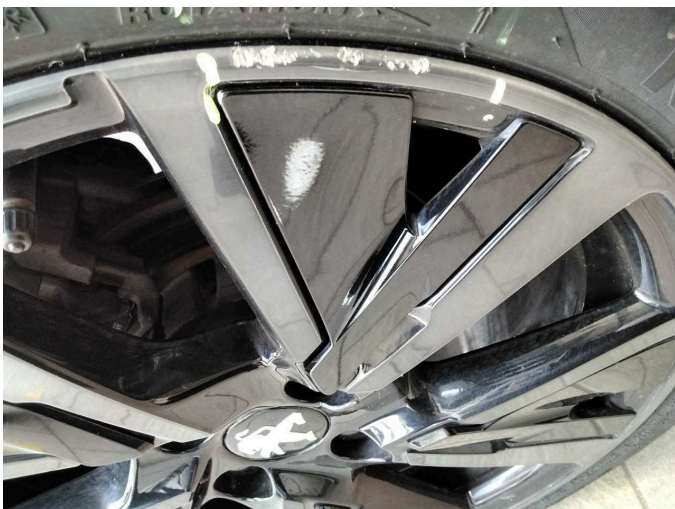
**Damage 3:** Wheel / tyres: Alloy rim - rear left side - Scratch(es) - Loss in value



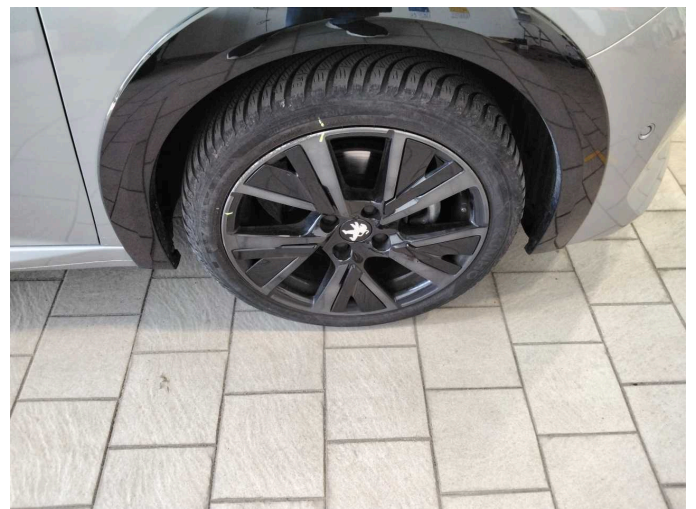
**Damage 4:** Wheel / tyres: Alloy rim - rear right side - Scratch(es) - Loss in value



**Damage 4:** Wheel / tyres: Alloy rim - rear right side - Scratch(es) - Loss in value



**Damage 4:** Wheel / tyres: Alloy rim - rear right side - Scratch(es) - Loss in value



**Damage 5:** Wheel / tyres: Alloy rim - front right side - Scratch(es) - Loss in value



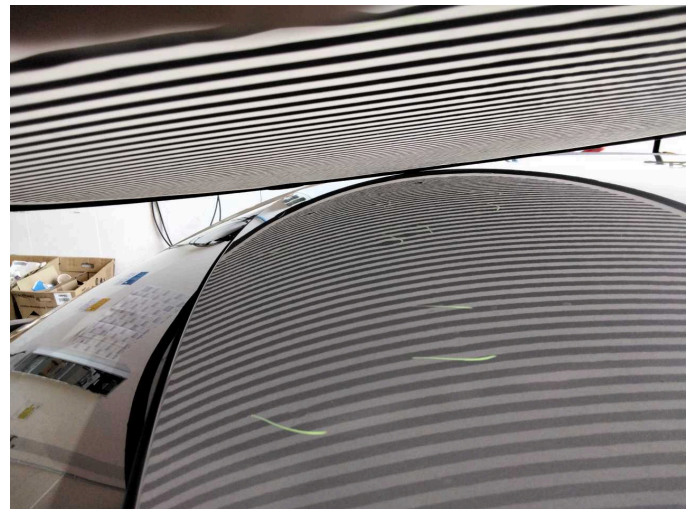
**Damage 5:** Wheel / tyres: Alloy rim - front right side - Scratch(es) - Loss in value



**Damage 6:** Body: Body - Damage by hail - repair according to calculation



**Damage 6:** Body: Body - Damage by hail - repair according to calculation



**Damage 6:** Body: Body - Damage by hail - repair according to calculation



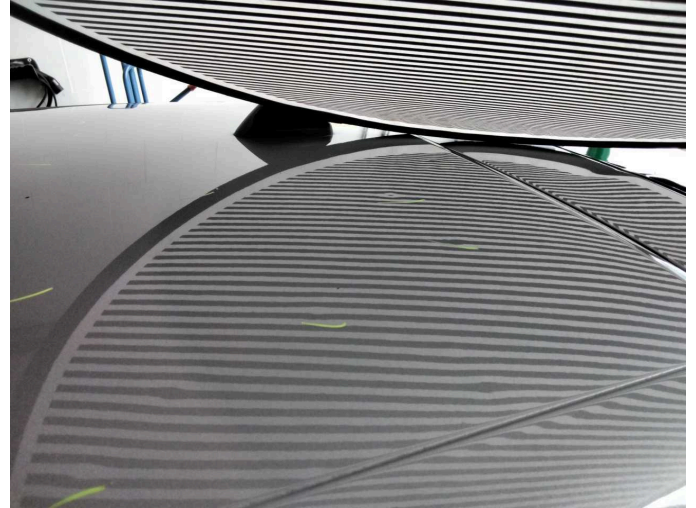
**Damage 6:** Body: Body - Damage by hail - repair according to calculation



**Damage 6:** Body: Body - Damage by hail - repair according to calculation



**Damage 6:** Body: Body - Damage by hail - repair according to calculation



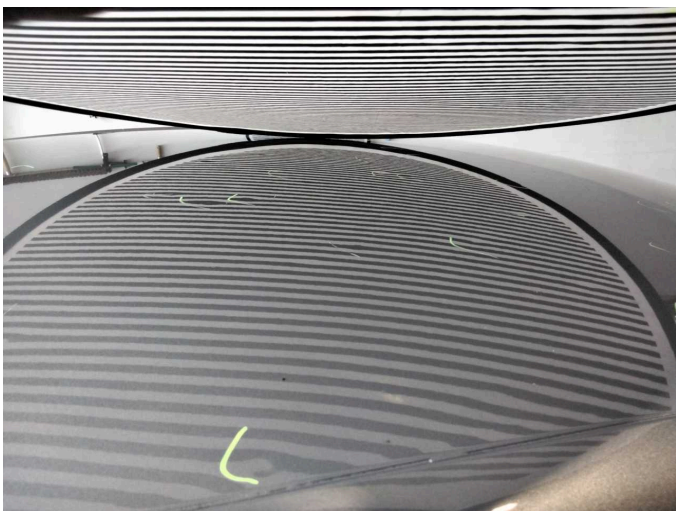
**Damage 6:** Body: Body - Damage by hail - repair according to calculation



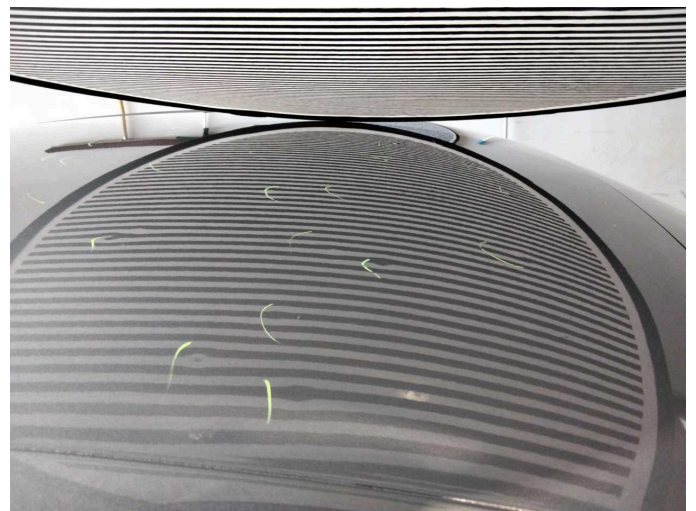
**Damage 6:** Body: Body - Damage by hail - repair according to calculation



**Damage 6:** Body: Body - Damage by hail - repair according to calculation



**Damage 6:** Body: Body - Damage by hail - repair according to calculation



**Damage 6:** Body: Body - Damage by hail - repair according to calculation



**Damage 6:** Body: Body - Damage by hail - repair according to calculation



**Damage 6:** Body: Body - Damage by hail - repair according to calculation



**Damage 6:** Body: Body - Damage by hail - repair according to calculation



**Damage 6:** Body: Body - Damage by hail - repair according to calculation



**Damage 6:** Body: Body - Damage by hail - repair according to calculation



**Damage 6:** Body: Body - Damage by hail - repair according to calculation



**Wear and tear 1:** Vehicle glazing: Windscreen - Stone chips - No deduction



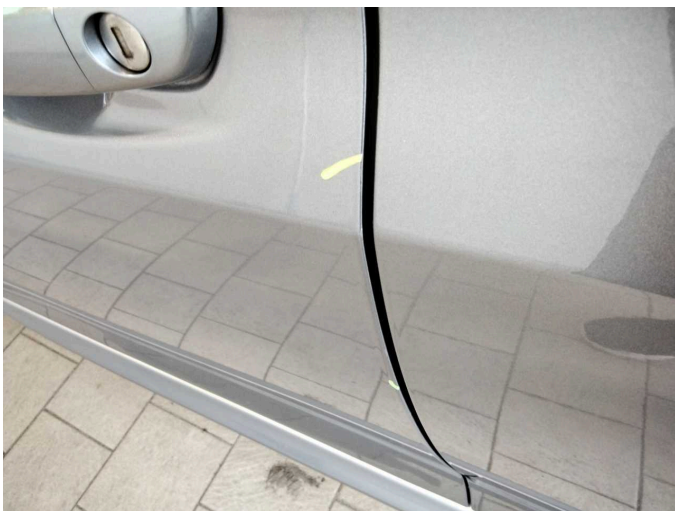
**Wear and tear 2:** Bonnet: Bonnet - Stone chips - No deduction



**Wear and tear 3:** Front bumper: Front bumper - Stone chips - No deduction



**Wear and tear 4:** Door - front left side: Door edge - Scratch(es) - Smart repair



**Wear and tear 4:** Door - front left side: Door edge - Scratch(es) - Smart repair



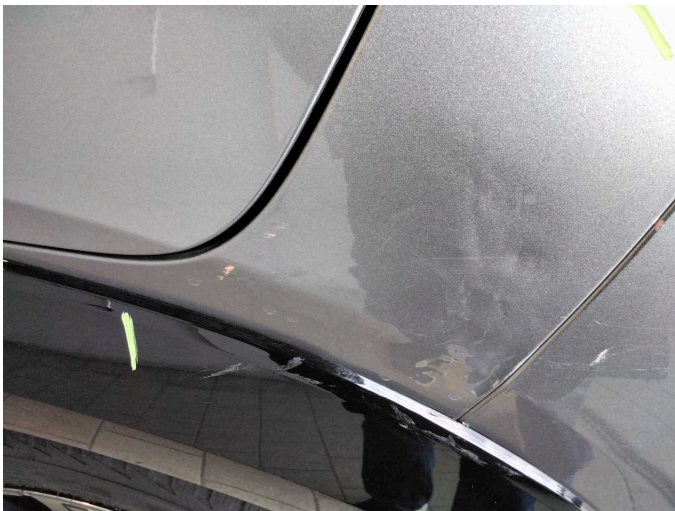
**Accident 1:** Side - left



Accident 1: Side - left



Accident 1: Side - left



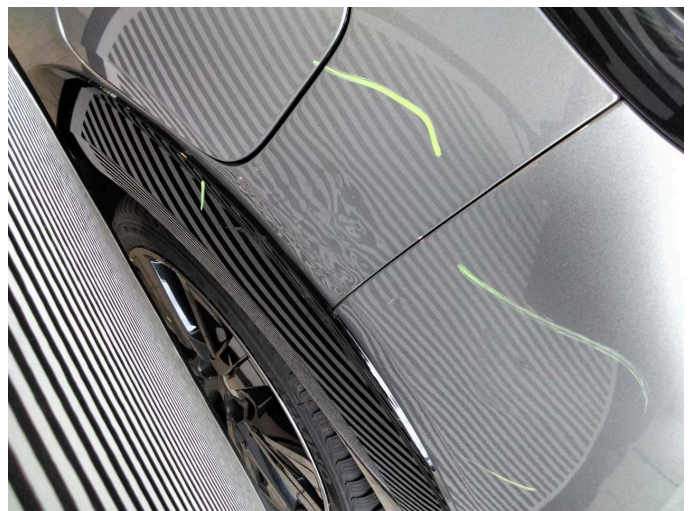
Accident 1: Side - left



Accident 1: Side - left



Accident 1: Side - left



Accident 1: Side - left



Accident 1: Side - left



Accident 1: Side - left