

Expertise

Protocol number: 45484828
Order No. / Reference: 26283570
Inspection date: 16 May 2026

Manufacturer: Skoda

Model: Superb Combi 2.0 TDI DSG Ambition

VIN: TMBJH7NP4N7029074



Vehicle details

Manufacturer / Type / Model / Equipment

Skoda Superb Combi 2.0 TDI DSG Ambition

Vehicle Identification number TMBJH7NP4N7029074

Mileage (Read) 122,586 km

First registration 25 Feb 2022

Number of holders 1

Power / Engine displacement 110 kw / 1,968 ccm

Fuel type / Cylinder Diesel / 4

Gearbox / Number of gears Automatic / 7

Type of drive Front drive

Type of vehicle Station wagon

Colour / colour code Lava-Blau Metallic

Doors / Seats 5 / 5

Upholstery type Cloth

Colour of upholstery Black



| Vehicle details | | | |
|--|------------------------------|--------------------------------|--|
| Maintenance booklet / proof | digital proof / complete | Next maintenance in | 1,000 km |
| Last service on / at | 09/2025 at 105,234 km | | |
| Key is / should be | 3 / 3 | FZG documents | ZB#2 (B) was available (copy), ZB#1 (S) was not available. |
| | | Letter No. | GJ901994 |
| Previous damage / Accident | Detectable | Repainting | Detectable |
| Inspection conditions | sufficient | Lifting equipment / pit | No |
| Test drive | Not performed | Engine function test | Performed |
| Manufacturer key number/ type code number | 8004 / APL 01649 | | |
| Emission standard | EURO6;WLTP;AP;PI/CI; M, N1 I | fine dust sticker | |
| Permitted total weight | 2,196 kg | Empty weight | |

Tyres

| Mounted tyres | | | | |
|------------------|----------------|-----------------------------|--------------|-------------|
| # | Tyre size | Type of tyre | Manufacturer | Tread depth |
| 1) | 215/60 R16 99H | Winter tyres on Light alloy | Vredestein | 6mm / 6mm |
| 2) | 215/60 R16 99H | Winter tyres on Light alloy | Vredestein | 7mm / 7mm |
| Additional tyres | | | | |
| # | Tyre size | Type of tyre | Manufacturer | Tread depth |
| 1) | 215/60 R16 99V | Summer tyres on Light alloy | Pirelli | 5mm / 5mm |
| 2) | 215/60 R16 99V | Summer tyres on Light alloy | Pirelli | 6mm / 6mm |
| Replacement | | | | |
| Typ | Tyre size | Type of tyre | Manufacturer | Tread depth |
| | Tirefit | Expiration date 12/2025 | | |

Legend: Tread depth information for the left tire is listed first, for the right tire it is listed second on the axle in the direction of travel.

TÜV SÜD Auto Partner GmbH
Wiesenring 2
04159 Leipzig

Inspection location
Hartmann Fleet Professionals GmbH
Leerenstraße 25
29683 Bad Fallingbommel



Equipment



Standard equipment

- Closed storage compartments behind the wheel arches in the trunk, including cargo elements
- Airbag, driver and switchable passenger airbag
- Airbag, driver's knee airbag
- Airbag, head airbags
- Airbag, front side airbags
- Anti-lock braking system (ABS)
- Traction control (ASR)
- Electrically adjustable and heated exterior mirrors
- Exterior mirrors and door handles in body color
- Electrically folding exterior mirrors (with boarding lights - interior and exterior mirrors with automatic dimming)
- Hydraulic brake assist (HBA)
- Decorative inlay silver brushed
- Digital instrument cluster (Virtual Cockpit) 10.2"
- Third brake light
- Electronic parking brake including auto-hold function
- Electronic Stability Control (ESC)
- Electric windows front and rear, including anti-pinch protection and child safety lock
- Cruise control system (cruise control) including speed limiter
- Transmission: 7-speed dual-clutch transmission (DSG)
- Tinted windows
- Heated rear window
- Rear window wiper including windshield washer system
- Child safety lock for rear doors & windows, electric
- Air Care Climatronic air conditioning (2-zone) (fully automatic, separately adjustable for driver and front passenger, including odor and allergen filter and air-conditioned glove compartment)
- Steering wheel: height and reach adjustable
- Rear center armrest with cup holders and pass-through option
- Multi-collision brake
- Upholstery: Cloth
- Radio accessories: Digital radio reception DAB+
- Radio accessories: In-car communication
- Radio accessories: SmartLink+ (Apple CarPlay - Android Auto - MirrorLink - SmartGate)
- Radio accessories: Wireless SmartLink for Apple CarPlay
- Tire mobility kit (tire repair spray incl. compressor)
- Heated windshield washer nozzles
- Electromechanical power steering
- Seats: Adjustable lumbar support in the front seats
- Seats: Height-adjustable front seats
- Seats: Rear seat backrest split 60:40, foldable
- Sun visor on driver and passenger side with illuminated make-up mirror
- Start/stop system including brake energy recuperation
- 12V socket in the trunk
- 12V socket in the center console, front and rear
- Storage compartments (ticket holder on the windshield, 4 roof grab handles, rear with coat hooks, coat hooks on the B-pillar, holder for the warning vests in the front doors, glasses compartment in the headliner, storage compartments in the door panels (front and rear) with 1.5l bottle holders, cup holder in the front center console with easy-open bottle opening, storage pockets on the front seat backrests, storage compartments behind the wheel arches in the trunk including cargo elements, illuminated trunk)
- Illuminated glove compartment
- Hill start assist
- Grey headliner
- Diesel particulate filter and SCR catalyst
- Tachometer
- Easy Start (start-stop button instead of ignition lock)
- Electronic transverse differential lock (XDS+)
- Driving light assistant and rain sensor (tunnel light, coming and leaving home function)
- Front radar assist including city emergency braking function (The front radar assist warns of impending collisions and initiates braking to reduce the force of an unavoidable impact. The front radar assist continuously monitors the distance to the vehicle ahead using a radar sensor integrated into the radiator grille.)
- ISOFIX preparation on the outer rear seats, including top tether
- Boot cover, roll-up and removable, semi-automatic
- Front and rear headrests are height-adjustable.
- LED low beam
- LED taillights
- Reading lights at the front and rear of the headliner
- Front center armrest with storage compartment
- Engine drag torque control (MSR)
- LED fog lights with integrated cornering lights
- Radio: Bolero infotainment system (capacitive 8" touch display in glass design - Wireless Smartlink (Apple CarPlay, Android Auto))
- Radio accessories: USB ports at the front (Type-C) and USB charging port (Type-A) in the center armrest
- Tire pressure monitoring
- Wheels: 16" Orion alloy wheels (6.5J x 16" ET 41 with 215/60 R16 tires)
- Superb safety belts (Height-adjustable three-point front seat belts with belt tensioners - Three three-point rear seat belts - Belt fastening indicator for all seats)
- SKODA Care Connect (SOS emergency call function (Emergency Call incl. automatic activation in the event of an accident with airbag deployment), Mobility service (connection for rapid assistance in case of breakdown), Information service (connection to the hotline for all questions relating to vehicle functions), Free remote vehicle access for 1 year (Remote Access) with access to vehicle data and functions via smartphone, e.g. parking position, activating hazard warning lights, current fuel level)
- Lashing eyes in the trunk



- Telephone: Convenient hands-free phone system with Bluetooth (without connection to an external antenna)
- Chrome-plated elements (on air vents, light switches, music or navigation systems, air conditioning)
- Immobiliser

- Central locking with remote control

Extra equipment

- Swiveling trailer hitch including trailer stabilization
- Roof rails, anodized
- Luggage net partition
- Package: Business Columbus (DSG) (Columbus navigation system - voice control - Wi-Fi hotspot - Wireless Smartlink for Apple CarPlay - 9.2" capacitive touchscreen in glass design - Phonebox - Traveller assistance system (traffic sign recognition, predictive lane keeping assist pACC, adaptive lane keeping assist, emergency and traffic jam assist, capacitive steering wheel with hands-off detection) - 230V socket and 3 USB ports, tablet holder - Sunset - Infotainment Online (3-year subscription))

- Heated windshield
- High beam assist
- Paint finish: Metallic
- Package: Comfort Plus (Combi DSG) (3-zone Climatronic - heated front and rear seats - Lounge Step floor mats - KESSY - 3rd vehicle key - comfort opening for the tailgate - heated steering wheel (with shift paddles) - sunshade for the rear side windows)
- Front and rear parking sensors
- Reversing camera with washer nozzle
- Divider grille Skoda Superb Combi

Brief expert findings

| | |
|----------------------|---|
| Documents submitted | At the time of the inspection, the vehicle registration certificate Part 2 (title) was available, but the vehicle registration certificate Part 1 (document) was not. (Copy) |
| VIN comparison | The vehicle identification number (VIN) was read from the vehicle and its conformity with the submitted documents was confirmed by the undersigned during the inspection. |
| Inspection | The inspection conditions were sufficient for the assessment of the vehicle. No lifting equipment or pit was available for inspecting the vehicle. Therefore, inspection of the vehicle's underside was only possible to a limited extent. |
| Test drive | No test drive/shunting maneuver was carried out during the inspection of the vehicle. |
| Engine function test | An engine test run was performed. |

Value reducing factors

| No. | Component group | Description |
|-----|-----------------------------|---|
| 1 | Equipment | Tirefit filler - Expired - Replace |
| 2 | Instrument panel | Air nozzle - centre - Broken / torn - Replace |
| 3 | Front bumper | Front bumper - Scratch(es) - Smart repair |
| 4 | Side panel - rear left side | Side panel - Dent / paintcoat damage - Smart repair |
| 5 | Sill - right side | Sill - Dent / paintcoat damage - Repair and paint |
| 6 | Door - rear right side | Door - Scratch(es) - Paint |
| 7 | Vehicle glazing | Windscreen - Broken / torn - Replace |

Wear and tear

| No. | Component group | Description |
|-----|------------------------|---|
| 1 | Bonnet | Bonnet - Stone chips - No deduction |
| 2 | Headlight | Headlight - left side - Stone chips - No deduction |
| 3 | Headlight | Headlight - right side - Stone chips - No deduction |
| 4 | Door - front left side | Door edge - Scratch(es) - No deduction |

The vehicle shows signs of wear and tear commensurate with its age and use.



Missing parts

Description

Documents - Service book (Digitaler Ausdruck)
Equipment - Umbrella
Interior - Boot cover / roller cover

Previous damages

| No. | Previous damage | Extent of damage (Net) |
|-----|---|------------------------|
| 1 | Side - left, Provided by user / customer, from 1 Jul 2023 | 4.098,75 € |

Repainting

No. Repainting

1 Side panel - rear left side, Professionally carried out, Invoice of repair done Non-existent

Paint coat thickness measurement

Side panel - rear left side 547 µm |

Order/Scope of Order

An order was placed to prepare a sales report for the described vehicle. This report includes the following:

- Description of key vehicle information
- Documentation of equipment features
(*Delivery by third-party service providers*)
- Documentation of damage, defects, missing parts
- Documentation of prior damage, unrepaired prior damage, repainting
- A brief visual or functional inspection of the equipment details, if possible.
(*Functional testing of driver assistance systems is not included in the scope of services!*)
- a photographic documentation of the vehicle

Basis for the order

This product is based on the guidelines for vehicle returns and valuations published by Alphabet Fleet GmbH. The expert makes the specific findings in each individual case objectively, within the framework of the prescribed standards, based on their own expertise.

The vehicle inspection takes place in a fully assembled, unassembled state.

Damage or defects that can only be detected during disassembly/diagnostic work or through further investigation remain within the realm of prognostic risk. An increased risk exists due to concealed defects caused by fraudulent misrepresentation and which were not identifiable by the expert.

Damage or defects resulting from normal use or wear and tear of the vehicle will be accepted in accordance with the applicable standard.

There was no explicit identification or monetary consideration of the expected features within the product.

Features which, in their nature and extent, slightly exceed normal use but do not constitute unacceptable damage, will be documented and indicated as signs of wear, if applicable.

Damage or defects that, according to the applicable standard, can no longer be attributed to normal use or wear and tear are listed under "Value Reducing Factors" in the product description.

Depending on the product specification, a monetary ID can be provided. If this takes place, the costs can be 100% d or pro rata depending on the vehicle's age and mileage.



Previous damages

According to available information previous damages were repaired at the vehicle. Traces of repairs, which allow conclusions about the area of repair, were not recognizable during the inspection.

Comments

-Der montierte Winterradsatz ist kein Bestandteil des Auslieferungsumfangs.



Figure 1: Diagonal front (left)



Figure 2: Diagonal front (right)



Figure 3: Diagonal rear (left)



Figure 4: Diagonal rear (right)

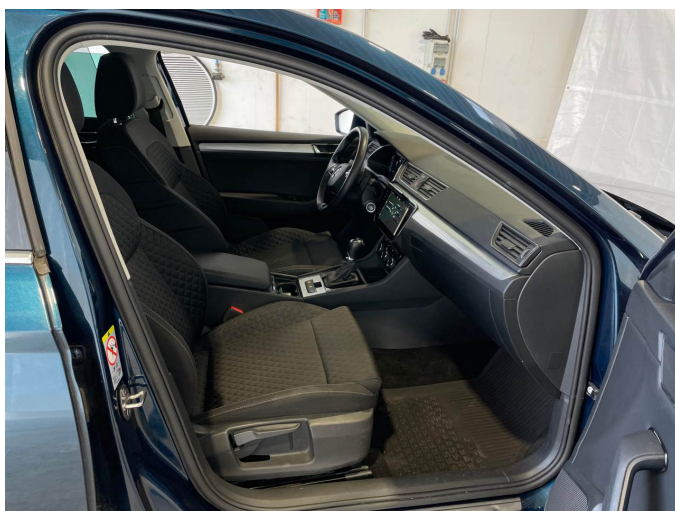


Figure 5: Interior - front



Figure 6: Interior - rear



Figure 7: Instrument cluster



Figure 8: Instrument panel



Figure 9: Interior 360° view



Figure 10: Cargo area



Figure 11: VIN



Figure 12: Mounted tyres



Figure 13: Documents



Figure 14: Documents

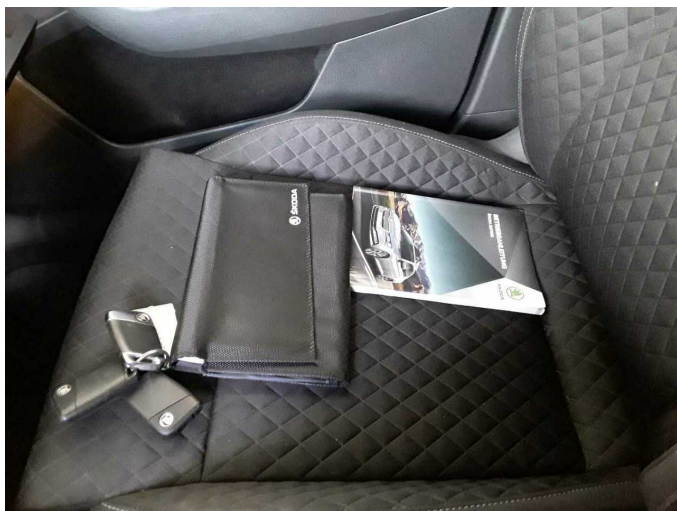


Figure 15: Documents



Figure 16: Additional tyres



Figure 17: Navigation



Figure 18: Misc.



Figure 19: Misc.



Figure 20: Misc.

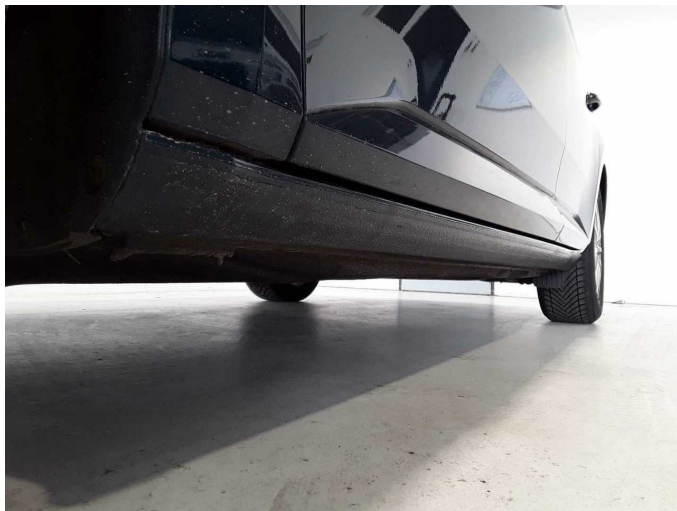


Figure 21: Misc.



Figure 22: Misc.

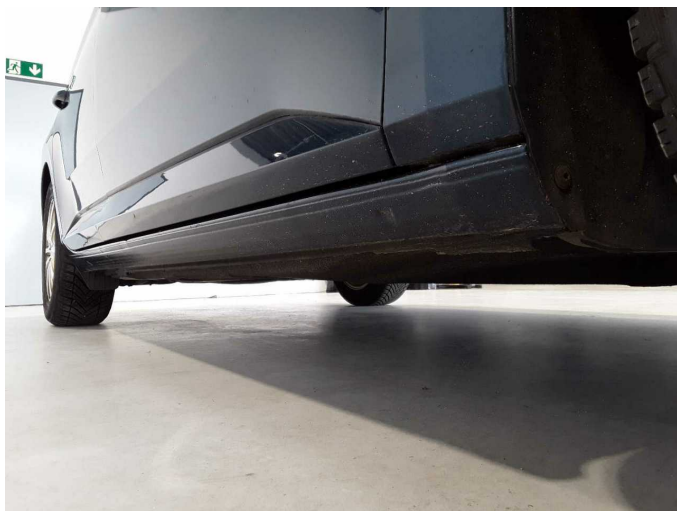


Figure 23: Misc.



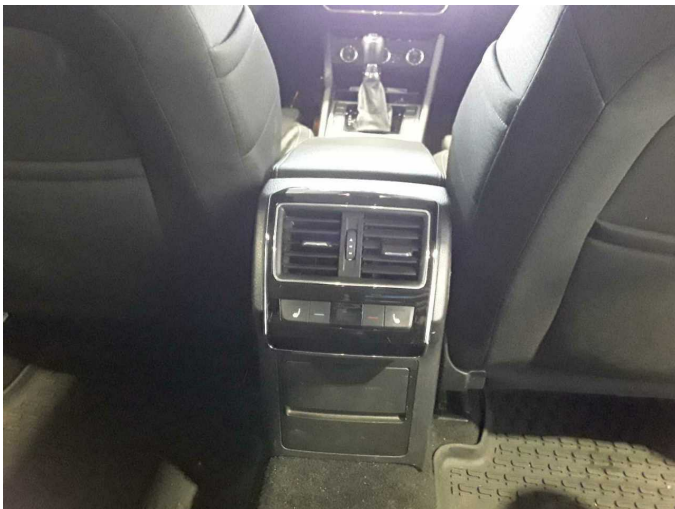
Figure 24: Misc.



Figure 25: Misc.



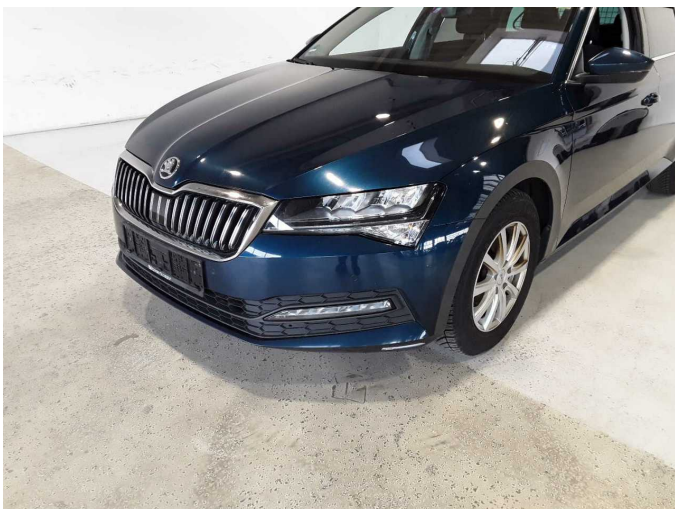
Figure 26: Misc.



Damage 2: Instrument panel: Air nozzle - centre - Broken / torn - Replace



Damage 2: Instrument panel: Air nozzle - centre - Broken / torn - Replace



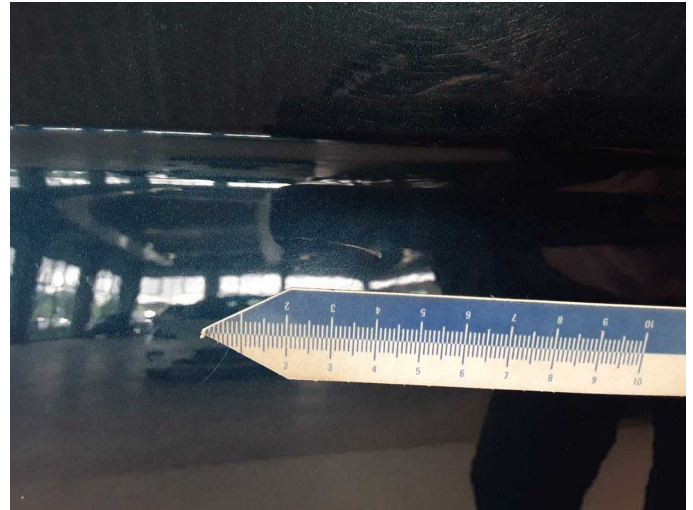
Damage 3: Front bumper: Front bumper - Scratch(es) - Smart repair



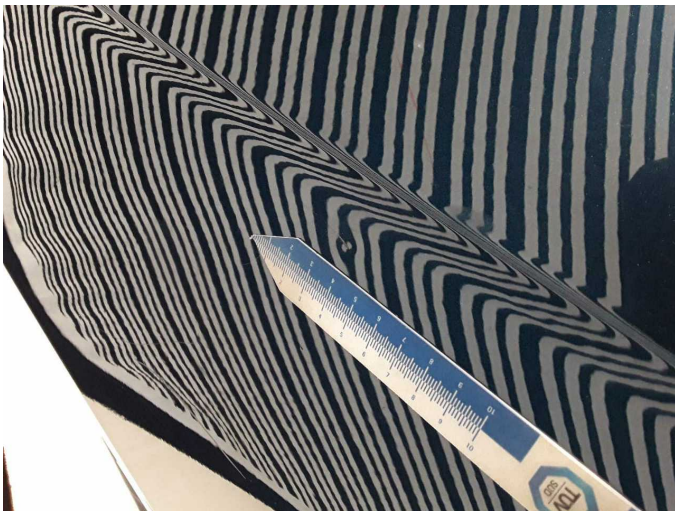
Damage 3: Front bumper: Front bumper - Scratch(es) - Smart repair



Damage 4: Side panel - rear left side: Side panel - Dent / paintcoat damage - Smart repair



Damage 4: Side panel - rear left side: Side panel - Dent / paintcoat damage - Smart repair



Damage 4: Side panel - rear left side: Side panel - Dent / paintcoat damage - Smart repair



Damage 5: Sill - right side: Sill - Dent / paintcoat damage - Repair and paint



Damage 5: Sill - right side: Sill - Dent / paintcoat damage - Repair and paint



Damage 5: Sill - right side: Sill - Dent / paintcoat damage - Repair and paint



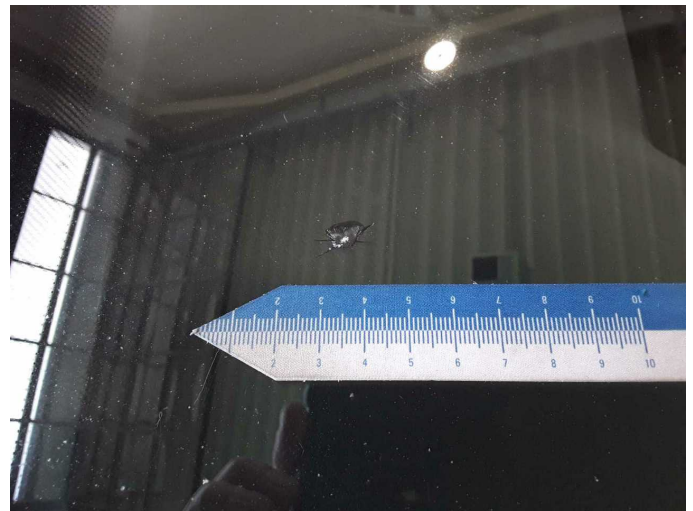
Damage 6: Door - rear right side: Door - Scratch(es) - Paint



Damage 6: Door - rear right side: Door - Scratch(es) - Paint



Damage 7: Vehicle glazing: Windscreen - Broken / torn - Replace



Damage 7: Vehicle glazing: Windscreen - Broken / torn - Replace



Repainting 1: Side panel - rear left side



Repainting 1: Side panel - rear left side



Wartungshistorie

(gemäß Auftraggeber Informationen)

Fahrgestellnummer: TMBJH7NP4N7029074

Hersteller / Modell: SKODA SKODA Superb Combi 2.0 TDI DSG Ambition

| Datum | KM-Stand | Beschreibung |
|------------|----------|--|
| 22.09.2025 | 105.234 | Motoröl b. Wartung; Ölfilter ern; Ölwechsel; Wartung Sonstiges |
| 14.05.2025 | 93.582 | Bremse Sonstiges; Bremsklötze vorne; Bremsscheiben vorne; HU + AU; Kraftstofffilter ern; Luftfiltereinsatz ern; Regelwartungsdienst |
| 16.10.2024 | 77.887 | Motoröl b. Wartung; Ölfilter ern; Ölwechsel; Wartung Sonstiges |
| 30.01.2024 | 61.161 | Bremse Sonstiges; Bremsflüssigkeit; Bremsflüssigkeit ern; Bremsklötze hinten; Bremsscheiben hinten; Regelwartungsdienst; Systemtest/ Eigendiagnose |
| 09.10.2023 | 54.335 | Motoröl b. Wartung; Ölfilter ern; Ölwechsel; Wartung Sonstiges |
| 04.01.2023 | 28.343 | Motoröl b. Wartung; Regelwartungsdienst |