

Expertise

Protocol number: 45976911
Order No. / Reference: 26463134
Inspection date: 15 Jun 2026

Manufacturer: Opel

Model: Corsa-e Elegance

VIN: VXKUHZKXZN4421289



Vehicle details

Manufacturer / Type / Model / Equipment

Opel Corsa-e Elegance

Vehicle Identification number VXKUHZKXZN4421289

Mileage (Read) 10,551 km

First registration 30 Dec 2022

Number of holders 1

Power / Engine displacement 57 kw / 0 ccm

Fuel type / Cylinder Electric / 0

Gearbox / Number of gears Direct drive / 1

Type of drive Front drive

Type of vehicle Saloon car

Colour / colour code Jade Weiß

Doors / Seats 5 / 5

Upholstery type Cloth / leather combination

Colour of upholstery Black-Anthracite



Vehicle details

Maintenance booklet / proof	digital proof / complete	Next maintenance in	18,500 km
Last service on / at	02/2025 at 4,076 km		
Key is / should be	2 / 2	FZG documents	ZB#2 (B) was available (copy), ZB#1 (S) was not available.
		Letter No.	GQ344229
Previous damage / Accident	Detectable	Repainting	Detectable
Inspection conditions	sufficient	Lifting equipment / pit	No
Test drive	Not performed	Engine function test	Performed
Manufacturer key number/ type code number	1889 / ABX 00027		
Emission standard	2017/1151;WLTP;reine Elektrofz	fine dust sticker	
Permitted total weight	1,897 kg	Empty weight	

Tyres

Mounted tyres

#	Tyre size	Type of tyre	Manufacturer	Tread depth
1)	195/55 R16 91H	All-season tyres on Light alloy	Goodyear	5mm / 5mm
2)	195/55 R16 91H	All-season tyres on Light alloy	Goodyear	6mm / 6mm

Replacement

Typ	Tyre size	Type of tyre	Manufacturer	Tread depth
	Tirefit	Expiration date 04/2028		

Legend: Tread depth information for the left tire is listed first, for the right tire it is listed second on the axle in the direction of travel.



Equipment

Standard equipment

- Storage compartments
- Airbag: Front airbags, driver and front passenger
- Airbag: Side airbag for driver and front passenger side
- Anti-lock braking system (ABS)
- Hill Start Assist
- On-board computer
- Braking system: Regenerative
- Electronic brake force distribution (EBD)
- Driver information display 7", color
- Electric windows front and rear
- Pedestrian protection
- Intelligent speed control and limiter
- Back window, heater
- Child safety lock in the rear doors, manual
- Headrests (5)
- LED headlights
- Steering column, height and reach adjustable
- Headlight range adjustment, manual
- Center armrest with storage compartment in front
- Fatigue detection
- Electric parking brake
- Upholstery: Fabric/premium leatherette combination
- Radio: Multimedia radio with 7" touchscreen color display
- Wheels: 6.5 J x 16 alloy wheels in 5-spoke design, silver/black
- Seat belts: Three-point seat belts in all seats
- Seats: Comfort driver's seat
- Lane Keeping Assist
- Traction Control (TC) Plus
- Traffic sign recognition
- Pre-wiring for child seat mounting system "ISOFIX"
- Heat-insulating glazing, tinted
- Ignition key (2)
- Adaptive brake light
- Airbag: Front and rear head airbags
- Active Pedestrian Warning System (AVAS)
- Electrically adjustable and heated exterior mirrors for driver and passenger side
- third brake light
- Headliner, Grey
- Electronic Stability Program Plus (ESP Plus)
- Driving modes: 3 adjustable
- Front collision warning system with automatic emergency braking and pedestrian detection
- Transmission: Automatic electric drive with fixed gear ratio
- rear window wiper
- automatic climate control
- Charging cable: Mode 2 charging cable
- Steering wheel made of vegan synthetic leather, flattened at the bottom.
- Lithium-ion battery
- myOpel app, with Corsa-e specific functions
- Onboard charger
- Pollen filter
- Quickheat rapid heating system
- Tire pressure warning
- Keyless Start system
- Power steering
- Visibility equipment
- Seats: Rear seat backrest split 60:40, foldable
- 12V power outlet in the center console, front
- Ambient lighting
- Pre-installation for ISOFIX child seat mounting system
- Immobiliser
- Central locking with remote control



Extra equipment

- Active Drive Assist (automatic transmission) (Automatic speed assistant with Stop&Go function - Front collision warning with automatic emergency braking and pedestrian and cyclist detection - Active lane keeping assistant)
- LED taillights
- Navigation system: Multimedia Navi Pro with 10" color touchscreen display (Multimedia radio, automatic music recognition, Bluetooth hands-free system, Apple CarPlay, Android Auto, voice control, 1 USB port, DAB+, steering wheel remote control, navigation system, road map of Europe (including Russia and Turkey), 3D map display, dynamic route guidance, display of points of interest, tour planning, GPS module, charging station display, OpelConnect, including live navigation services, real-time traffic information, online POI search, map updates (via USB))
- Heated seats, driver and passenger
- Paint finish: Solid
- Charging cable: Mode 3 charging cable, single-phase (for public charging (7.4 kW))
- LED fog lights
- Leather steering wheel, heated
- Onboard charger (vehicle-integrated charging unit, 3-phase (11 kW))
- Park & Go Plus (180-degree panoramic reversing camera - Park Pilot, front and rear parking aid with audiovisual warning - blind spot warning and side protection - electrically folding exterior mirrors)
- Wheels: Alloy wheels 6.5 J x 16 in 5-spoke design in silver/black (all-weather tires 195/55 R16)
- Keyless locking and starting system (electrically folding exterior mirrors - center armrest with storage compartment, front)

Retrofitted equipment

- Green Up charging cable

Brief expert findings

Documents submitted	At the time of the inspection, the vehicle registration certificate Part 2 (title) was available, but the vehicle registration certificate Part 1 (document) was not. (Copy)
VIN comparison	The vehicle identification number (VIN) was read from the vehicle and its conformity with the submitted documents was confirmed by the undersigned during the inspection.
Inspection	The inspection conditions were sufficient for the assessment of the vehicle. No lifting equipment or pit was available for inspecting the vehicle. Therefore, inspection of the vehicle's underside was only possible to a limited extent.
Test drive	No test drive/shunting maneuver was carried out during the inspection of the vehicle.
Engine function test	An engine test run was performed.

Wear and tear

No.	Component group	Description
1	Roof	Roof - dent(s) - No deduction

The vehicle shows signs of wear and tear commensurate with its age and use.

Previous damages

No.	Previous damage	Extent of damage (Net)
1	Side right, Professionally repaired, Invoice of repair done	Non-existent

Repainting

No.	Repainting
1	Door - rear right side, Professionally carried out, Invoice of repair done
2	Door - front right side, Professionally carried out, Invoice of repair done



Paint coat thickness measurement

Door - rear right side	199 µm	Door - front right side	1,030 µm
------------------------	--------	-------------------------	----------

Order/Scope of Order

An order was placed to prepare a sales report for the described vehicle. This report includes the following:

- Description of key vehicle information
- Documentation of equipment features
(Delivery by third-party service providers)
- Documentation of damage, defects, missing parts
- Documentation of prior damage, unrepaired prior damage, repainting
- A brief visual or functional inspection of the equipment details, if possible.
(Functional testing of driver assistance systems is not included in the scope of services!)
- a photographic documentation of the vehicle

Basis for the order

This product is based on the guidelines for vehicle returns and valuations published by Alphabet Fleet GmbH. The expert makes the specific findings in each individual case objectively, within the framework of the prescribed standards, based on their own expertise.

The vehicle inspection takes place in a fully assembled, unassembled state.

Damage or defects that can only be detected during disassembly/diagnostic work or through further investigation remain within the realm of prognostic risk. An increased risk exists due to concealed defects caused by fraudulent misrepresentation and which were not identifiable by the expert.

Damage or defects resulting from normal use or wear and tear of the vehicle will be accepted in accordance with the applicable standard.

There was no explicit identification or monetary consideration of the expected features within the product.

Features which, in their nature and extent, slightly exceed normal use but do not constitute unacceptable damage, will be documented and indicated as signs of wear, if applicable.

Damage or defects that, according to the applicable standard, can no longer be attributed to normal use or wear and tear are listed under "Value Reducing Factors" in the product description.

Depending on the product specification, a monetary ID can be provided. If this takes place, the costs can be 100% or pro rata depending on the vehicle's age and mileage.

Previous damages

Professionally repaired previous damages were found at the vehicle.



Figure 1: Diagonal front (left)



Figure 2: Diagonal front (right)



Figure 3: Diagonal rear (left)



Figure 4: Diagonal rear (right)



Figure 5: Interior - front



Figure 6: Interior - rear



Figure 7: Instrument cluster



Figure 8: Instrument panel



Figure 9: Interior 360° view



Figure 10: Cargo area

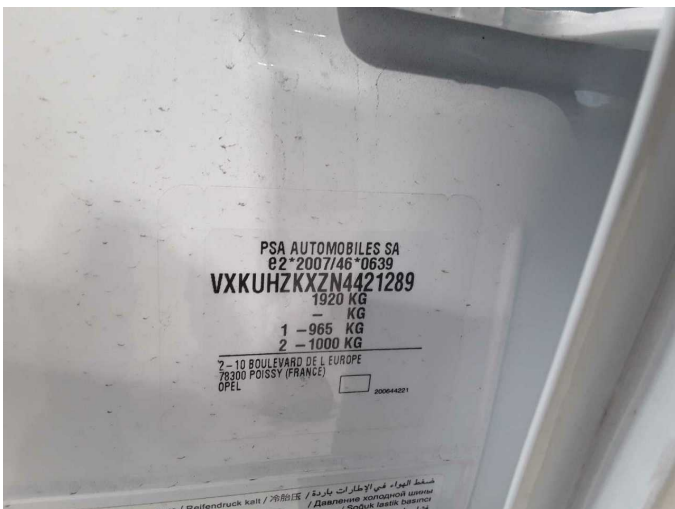


Figure 11: VIN



Figure 12: Mounted tyres



Figure 13: Documents



Figure 14: Documents



Figure 15: Documents

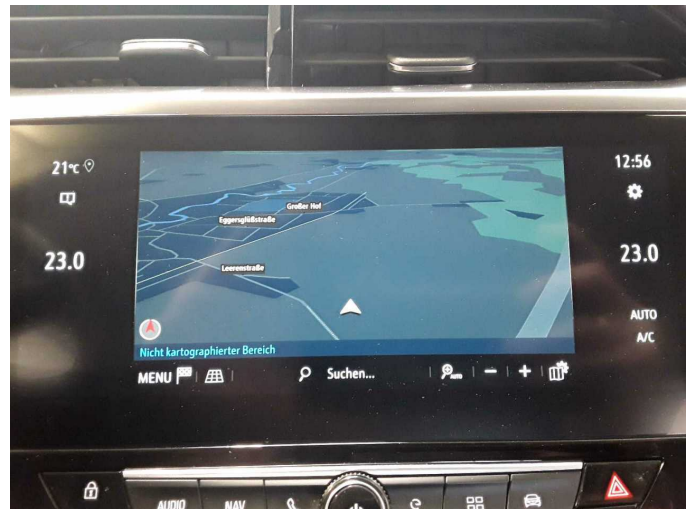


Figure 16: Navigation



Figure 17: Misc.



Figure 18: Misc.



Figure 19: Misc.



Figure 20: Misc.



Figure 21: Misc.

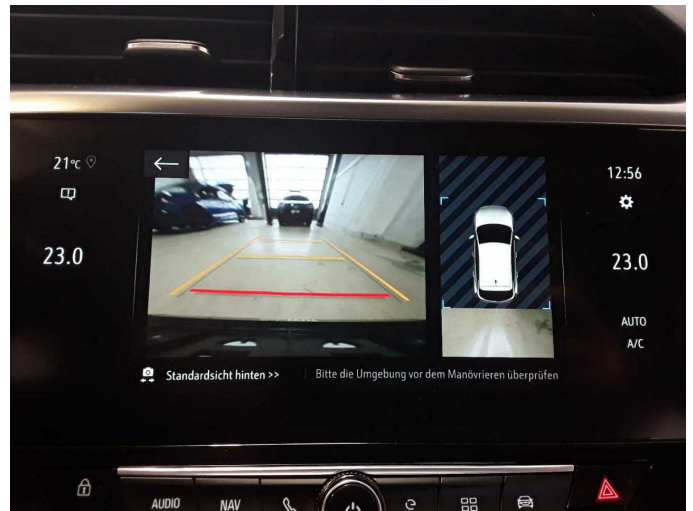
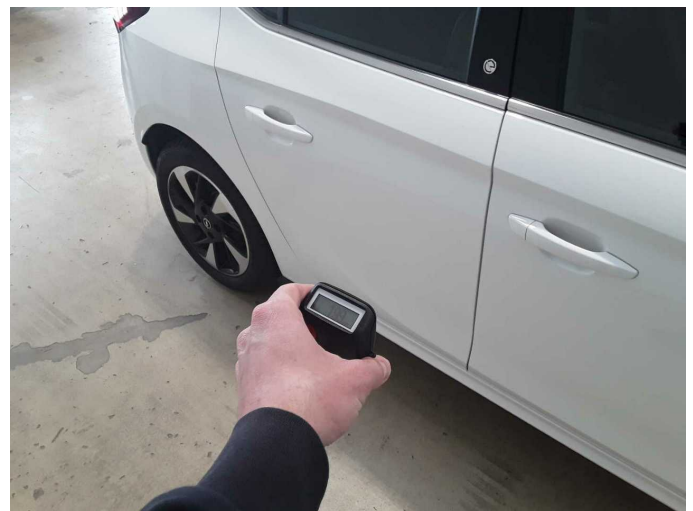


Figure 22: Misc.



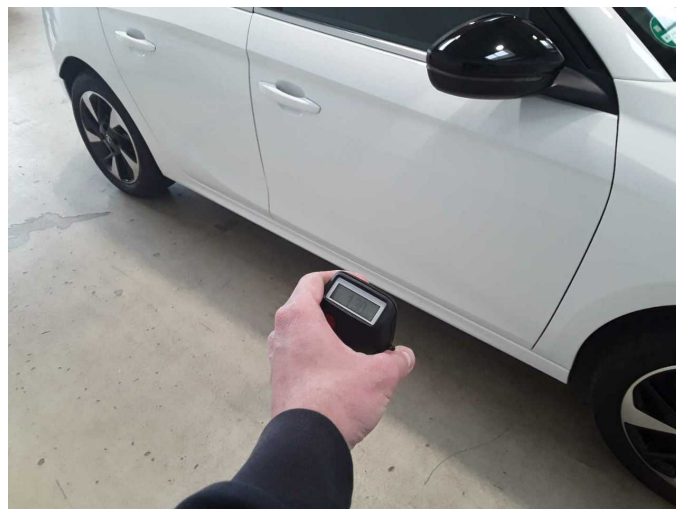
Figure 23: Misc.



Repainting 1: Door - rear right side



Repainting 1: Door - rear right side



Repainting 2: Door - front right side



Repainting 2: Door - front right side



Wartungshistorie

(gemäß Auftraggeber Informationen)

Fahrgestellnummer: VVKUHZKXZN4421289

Hersteller / Modell: OPEL OPEL Corsa-e Elegance

Datum	KM-Stand	Beschreibung
17.02.2025	4.076	Bremsflüssigkeit; Bremsflüssigkeit ern; Regelwartungsdienst