

## 2-EXN-008

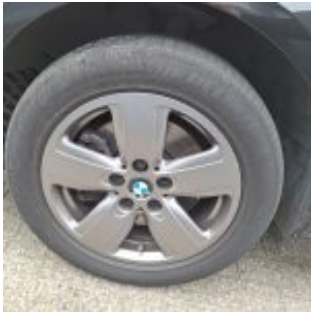
2-EXN-008 · Business Edition · 7 May 2026 · Zaventem (BE)

### Specifications

|                      |                  |                   |                                     |
|----------------------|------------------|-------------------|-------------------------------------|
| License Plate Number | 2-EXN-008        | Fuel Type         | Gasoline                            |
| Manufacturer         | BMW              | VIN               | WBA7K110607P07332                   |
| Model                | 116i             | Cylinder Capacity | 1.499 <sup>cm<sup>3</sup></sup>     |
| Model Versions       | Business Edition | Transmission Type | Automatisch geschakelde Transmissie |
| Body Type            | 5 door hatchback | First Admission   | 28-02-2024                          |
| Color                | Black            | Odometer          | 84.538 <sup>Km</sup>                |
| Paint Type           | Metallic         | Numer Of Keys     | 2                                   |
| Production Year      | 2024             | Interior          | Grey                                |
| KW                   | 80               | Number Headrests  | 5                                   |

# Images





## Accessories

ABS

Airbags

Alloy wheels

Audio System

Automatic air conditioning

Bluetooth car kit

Central door locking

Centre armrest

Cruise control

Electric rear windows

Electric windows front

Electrically adjustable exterior mirrors

Front & rear parking sensors

Leather steering wheel

Navigation system

Roller cover / parcel shelf

Steering wheel multifunction

## Condition

Condition exterior Adequate

Condition interior Adequate

Last Maintenance Unknown

Previous Repairs Unknown

## Tire Specifications

| <b>Tire</b>     | <b>Profile</b>  | <b>Brand</b> | <b>Width</b>      | <b>Aspect Ratio</b> | <b>Radial</b>      | <b>Type</b> |
|-----------------|-----------------|--------------|-------------------|---------------------|--------------------|-------------|
| Front Left      | 2 <sup>mm</sup> | Delinte      | 205 <sup>mm</sup> | 55 <sup>mm</sup>    | 16 <sup>inch</sup> | Summer      |
| Rear Left       | 5 <sup>mm</sup> | Bridgestone  | 205 <sup>mm</sup> | 55 <sup>mm</sup>    | 16 <sup>inch</sup> | Summer      |
| Front Right     | 2 <sup>mm</sup> | Delinte      | 205 <sup>mm</sup> | 55 <sup>mm</sup>    | 16 <sup>inch</sup> | Summer      |
| Rear Right      | 5 <sup>mm</sup> | Bridgestone  | 205 <sup>mm</sup> | 55 <sup>mm</sup>    | 16 <sup>inch</sup> | Summer      |
| Spare Tire Type | None            |              |                   |                     |                    |             |

## Damages



|                     |             |             |            |
|---------------------|-------------|-------------|------------|
| Damage Part         | Damage Type | Repair Type | Acceptable |
| Alloy - Right Front | Damaged     | Rim repair  | No         |



|                      |             |             |            |
|----------------------|-------------|-------------|------------|
| Damage Part          | Damage Type | Repair Type | Acceptable |
| Fender - Front Right | Scratch(es) | Spray       | No         |



|                   |             |             |            |
|-------------------|-------------|-------------|------------|
| Damage Part       | Damage Type | Repair Type | Acceptable |
| Frontdoor - Right | Scratch(es) | Spray       | No         |



|                  |             |             |            |
|------------------|-------------|-------------|------------|
| Damage Part      | Damage Type | Repair Type | Acceptable |
| Reardoor - Right | Scratch(es) | Spray       | No         |



|                    |             |             |            |
|--------------------|-------------|-------------|------------|
| Damage Part        | Damage Type | Repair Type | Acceptable |
| Alloy - Right Rear | Damaged     | Rim repair  | No         |



|                     |                               |                      |            |
|---------------------|-------------------------------|----------------------|------------|
| Damage Part         | Damage Type                   | Repair Type          | Acceptable |
| Fender - Rear Right | small dents / small scratches | Panelbeating & Spray | No         |



|               |             |             |            |
|---------------|-------------|-------------|------------|
| Damage Part   | Damage Type | Repair Type | Acceptable |
| Bumper - Rear | Scratch(es) | Spray       | No         |



|                  |             |                      |            |
|------------------|-------------|----------------------|------------|
| Damage Part      | Damage Type | Repair Type          | Acceptable |
| Frontdoor - Left | Dent(s)     | Panelbeating & Spray | No         |



Damage Part

Damage Type

Repair Type

Acceptable

Alloy - Left Front

Damaged

Rim repair

No



Damage Part

Damage Type

Repair Type

Acceptable

Bumper - Front

Scratch(es)

Spray

No