

Expertise

Protocol number: 46321112
Order No. / Reference: 26429419
Inspection date: 3 Jul 2026

Manufacturer: Volkswagen

Model: Passat Variant 2.0 TDI SCR DSG Business

VIN: WVVZZZ3C9RE016303



Vehicle details

Manufacturer / Type / Model / Equipment

Volkswagen Passat Variant 2.0 TDI SCR DSG Business

Vehicle Identification number WVVZZZ3C9RE016303

Mileage (Read) 79,087 km

First registration 15 Dec 2023

Number of holders 1

Power / Engine displacement 147 kw / 1,968 ccm

Fuel type / Cylinder Diesel / 4

Gearbox / Number of gears Automatic / 7

Type of drive Front drive

Type of vehicle Station wagon

Colour / colour code Mondsteingrau

Doors / Seats 5 / 5

Upholstery type Cloth

Colour of upholstery Grey-Black



Vehicle details

Maintenance booklet / proof	digital proof / complete	Next maintenance in	12,600 km
Last service on / at	08/2025 at 61,662 km		
Key is / should be	2 / 2	FZG documents	ZB#2 (B) was available (copy), ZB#1 (S) was not available.
		Letter No.	GY254856
Previous damage / Accident	None detectable	Repainting	None detectable
Inspection conditions	sufficient	Lifting equipment / pit	No
Test drive	Not performed	Engine function test	Performed
Manufacturer key number/ type code number	0603 / CON 01911		
Emission standard	EURO6;WLTP;AP;PI/CI; M, N1 I	fine dust sticker	
Permitted total weight	2,180 kg	Empty weight	

Tyres

Mounted tyres				
#	Tyre size	Type of tyre	Manufacturer	Tread depth
1)	215/60 R16 95H	Winter tires (with run-flat tires) on Light alloy	Pirelli	5mm / 5mm
2)	215/60 R16 95H	Winter tires (with run-flat tires) on Light alloy	Pirelli	7mm / 7mm
Additional tyres				
#	Tyre size	Type of tyre	Manufacturer	Tread depth
1)	215/55 R17 94W	Summer tires (with run-flat tires) on Light alloy	Pirelli	7mm / 7mm
2)	215/55 R17 94W	Summer tires (with run-flat tires) on Light alloy	Pirelli	5mm / 5mm

Legend: Tread depth information for the left tire is listed first, for the right tire it is listed second on the axle in the direction of travel.

TÜV SÜD Auto Partner GmbH
Wiesenring 2
04159 Leipzig

Inspection location
ARS Altmann AG Automobillogistik
Römerstraße 3
64560 Riedstadt



Equipment



Standard equipment

- Airbag for driver and front passenger (airbag deactivation switch on the passenger side)
- Anti-lock braking system (ABS)
- Adaptive Cruise Control (ACC) "stop & go", including speed limiter
- Electrically adjustable and heated exterior mirrors, ambient lighting (automatically dimming on the driver's side)
- Chrome trim on the side windows
- black roof rails
- Tachometer
- Entry/warning lights in LED technology in the front doors
- Electronic parking brake including auto-hold function
- Automatic headlight control (with daytime running lights, "Leaving home" function and manual "Coming home" function)
- Pedestrian detection
- Adjustable luggage compartment floor
- Rear window heated
- rear window wiper
- ISOFIX mounting points (for attaching 2 child seats to the rear seats, also for i-Size child seats)
- Rear headrests (3)
- Paint finish: Solid
- LED fog lights and cornering lights
- LED headlights with daytime running lights
- Headlight range control
- Front center armrest, height and length adjustable, with storage box (2 rear air vents with chrome slats)
- Fatigue detection (detects signs of possible driver fatigue based on characteristic steering behavior, time of day and driving duration and issues a visual and audible warning)
- Mesh partition
- Non-smoking version (storage compartment and 12V socket at the front)
- Emergency braking assistant "Front Assist" (for automatic distance control ACC up to 210 km/h)
- Package: Light and Sight Package "Plus" (LED lights in the front footwell - Electrically adjustable and heated exterior mirrors, automatically dimming on the driver's side - Entry/warning lights in the front doors, in LED technology - Automatic headlight control, with daytime running lights, "Leaving Home" function and manual "Coming Home" function - Interior light with delayed shut-off and dimming function, 2 LED reading lights each in the front and rear - Automatically dimming interior mirror - Illuminated vanity mirrors - Extendable sun visors - Rain sensor)
- Radio accessories: Digital radio reception DAB+ (reception of digitally broadcast radio stations and traffic information in addition to the analog station offering - reception depends on the local availability of digital networks - expanded range of radio programs - improved reception performance)
- Wheels: AirStop tires 215/55 R 17
- Airbag, head airbag system for front and rear passengers (including front side airbags)
- App-Connect (Volkswagen offers three interfaces for connecting smartphones with numerous possibilities: - Apple CarPlay - Android Auto from Google - MirrorLink)
- Cup holders (2) front
- Hill start assist
- third brake light
- Headliner in Mistral Grey
- Diesel particulate filter
- Parking aid - warning signals for obstacles in the front and rear area
- Electronic stability program and electromechanical brake booster
- Remote release for luggage compartment lid
- Windscreen made of laminated safety glass, heat and sound insulating
- Transmission: 7-speed DSG (7-speed dual-clutch transmission DSG)
- Interior lights with delayed shut-off and dimming function (2 LED reading lights each at the front and rear)
- Air conditioning (with active combination filter)
- Front headrests (safety-optimized, longitudinally and height-adjustable)
- LED taillights
- Steering wheel: Multifunction steering wheel in leather, with paddle shifters
- Multifunction display "Premium" with multi-color display (showing, among other things: - Outside temperature - Average consumption - Average speed - Trip distance - Trip time - Gear recommendation - Speed warning - Comfort - Current consumption - Range - Service - Time with extended display options, e.g.: - Digital speedometer - Digital oil temperature display - Lights & visibility - Language - Auxiliary heater - Winter tires)
- Emergency call service (no registration required, service is activated upon delivery)
- Upholstery: Fabric "Business" (seat center panels of the front seats and the outer rear seats in fabric "Weave")
- Proactive occupant protection system in conjunction with "Front Assist" (detects critical traffic situations with increased accident potential - prepares vehicle occupants and the vehicle for a possible accident by tightening the front, fastened seat belts and securing the driver and front passenger, and closing open windows and the sunroof except for a gap)
- Radio "Composition" (touchscreen with 16.5 cm screen diagonal - 8 speakers - output power 4 x 20 watts - diversity antenna for FM reception - dual tuner - RDS - MP3 playback - USB-C interface - 3-way tone control)
- Tire pressure monitoring system (passive)
- Wheels: 4 "Istanbul" alloy wheels 7 J x 17 (painted in sterling silver)
- Wheels: Tire Mobility Set omitted
- Gearshift knob in leather
- Keyless start system without safe locking



- Rear bench seat undivided, backrest asymmetrically split and foldable, with center armrest (and pass-through option)
- Seat belts: Three-point automatic seat belt (seat belt for middle rear seat - seat belts for outer rear seats - front seat belts with height adjustment and belt tensioner)
- Seats: Front seats height-adjustable (ergoComfort seat on the driver's side - with electric backrest adjustment)
- Start-stop system (with brake energy recuperation)
- Telephone interface
- Textile floor mats (front and rear)
- Warning tone and light for unfastened seat belts front and rear

Extra equipment

- "Comfort" telephone interface with inductive charging function
- App-Connect Wireless
- Luggage net
- Navigation system "Discover Media" incl. "Streaming & Internet"
- On-board tools and jack
- Package: "Business Premium" package including navigation (from Business level upwards)
- Towbar, foldable (with electric release)
- Wheels: Winter wheels (additional), light alloy, "Aragon" 6.5 J x 16

- Power steering (electromechanical, speed-dependent)
- Seats: Comfort seats in the front
- Seats: Lumbar support in the front (driver's side electrically adjustable)
- Lane Assist (warns with a corrective steering intervention if the vehicle unintentionally leaves the lane)
- 12V power outlet on the rear center console (and in the luggage compartment)
- First aid kit, warning triangle and high-visibility vest
- Electronic immobilizer
- Central locking with remote control

- High beam control "Light Assist" (automatically switches on the high beam in darkness from 65 km/h - detects vehicles ahead and oncoming vehicles and automatically dims the headlights before they are blinded)
- Package: Luggage compartment divider package without storage compartments (split luggage compartment floor - stainless steel loading sill protection)
- Seats: ergoComfort seat with 14-way electric adjustment, memory and massage function on driver's side in conjunction with Business Package (electrically folding exterior mirrors, auto-dimming on driver's side, ambient lighting, passenger-side mirror lowering and memory function - electrically adjustable lumbar support for front seats, massage function on driver's side - electrically adjustable front seats, ergoComfort seat on driver's side with memory function and comfort entry)

Brief expert findings

Documents submitted	At the time of the inspection, the vehicle registration certificate Part 2 (title) was available, but the vehicle registration certificate Part 1 (document) was not. (Copy)
VIN comparison	The vehicle identification number (VIN) was read from the vehicle and its conformity with the submitted documents was confirmed by the undersigned during the inspection.
Inspection	The inspection conditions were sufficient for the assessment of the vehicle. No lifting equipment or pit was available for inspecting the vehicle. Therefore, inspection of the vehicle's underside was only possible to a limited extent.
Test drive	No test drive/shunting maneuver was carried out during the inspection of the vehicle.
Engine function test	An engine test run was performed.

Value reducing factors

No.	Component group	Description
1	Rear bumper	Rear bumper - Scratch(es) - Smart repair
2	Front bumper	Front bumper - Scratch(es) - Paint



Order/Scope of Order

An order was placed to prepare a sales report for the described vehicle. This report includes the following:

- Description of key vehicle information
- Documentation of equipment features
(Delivery by third-party service providers)
- Documentation of damage, defects, missing parts
- Documentation of prior damage, unrepaired prior damage, repainting
- A brief visual or functional inspection of the equipment details, if possible.
(Functional testing of driver assistance systems is not included in the scope of services!)
- a photographic documentation of the vehicle

Basis for the order

This product is based on the guidelines for vehicle returns and valuations published by Alphabet Fleet GmbH. The expert makes the specific findings in each individual case objectively, within the framework of the prescribed standards, based on their own expertise.

The vehicle inspection takes place in a fully assembled, unassembled state.

Damage or defects that can only be detected during disassembly/diagnostic work or through further investigation remain within the realm of prognostic risk. An increased risk exists due to concealed defects caused by fraudulent misrepresentation and which were not identifiable by the expert.

Damage or defects resulting from normal use or wear and tear of the vehicle will be accepted in accordance with the applicable standard.

There was no explicit identification or monetary consideration of the expected features within the product.

Features which, in their nature and extent, slightly exceed normal use but do not constitute unacceptable damage, will be documented and indicated as signs of wear, if applicable.

Damage or defects that, according to the applicable standard, can no longer be attributed to normal use or wear and tear are listed under "Value Reducing Factors" in the product description.

Depending on the product specification, a monetary ID can be provided. If this takes place, the costs can be 100% d or pro rata depending on the vehicle's age and mileage.

Previous damages

No apparent prior damage that had been repaired could be found on the vehicle.

Comments

- Die Unterbodenbesichtigung war nur ebenerdig & eingeschränkt möglich. Mehrkosten möglich.



Figure 1: Diagonal front (left)



Figure 2: Diagonal front (right)



Figure 3: Diagonal rear (left)



Figure 4: Diagonal rear (right)



Figure 5: Interior - front



Figure 6: Interior - rear



Figure 7: Instrument cluster



Figure 8: Instrument panel



Figure 9: Interior 360° view



Figure 10: Cargo area

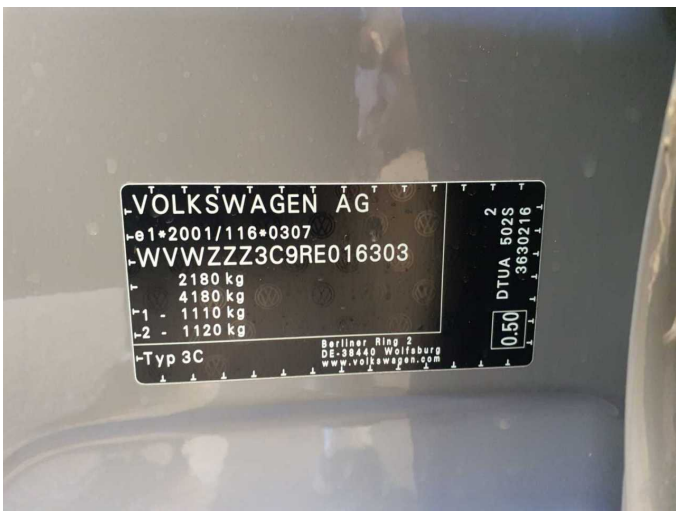


Figure 11: VIN



Figure 12: Mounted tyres

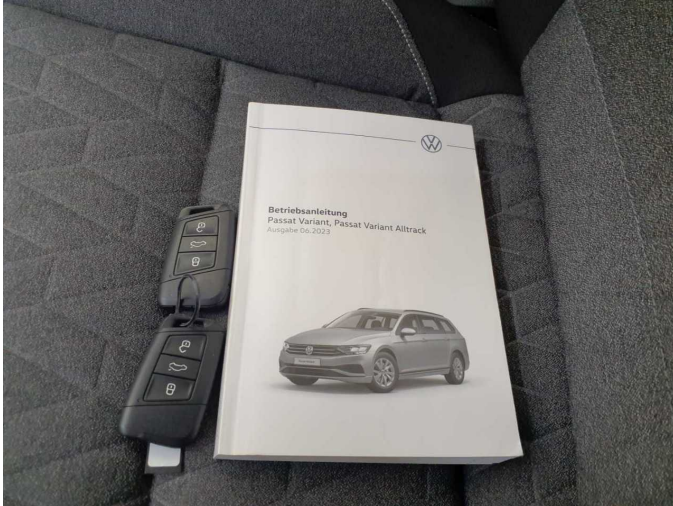


Figure 13: Documents



Figure 14: Documents



Figure 15: Additional tyres



Figure 16: Navigation



Figure 17: Misc.



Figure 18: Misc.



Figure 19: Misc.



Figure 20: Misc.



Figure 21: Misc.



Figure 22: Misc.



Figure 23: Misc.

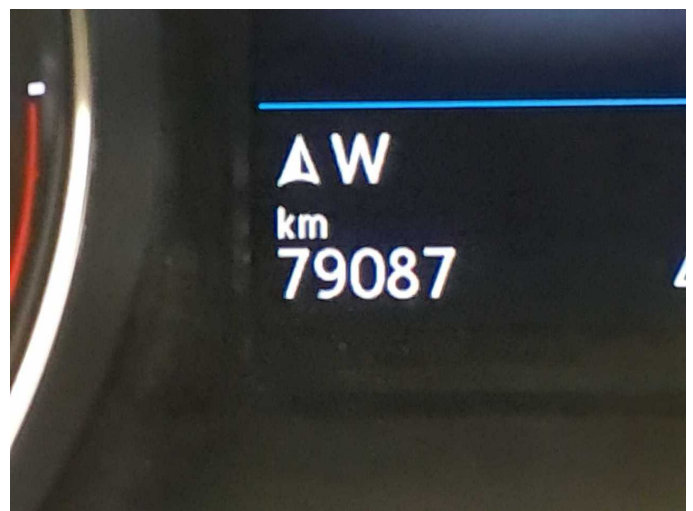


Figure 24: Misc.



Figure 25: Misc.



Figure 26: Misc.



Figure 27: Misc.



Figure 28: Misc.

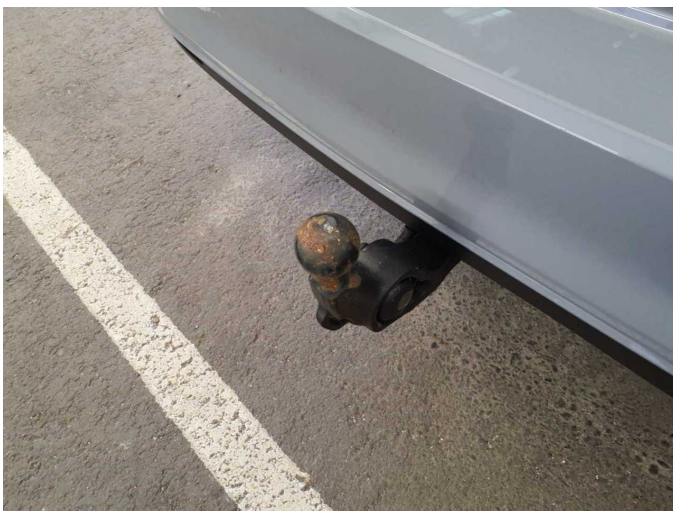


Figure 29: Misc.



Figure 30: Misc.



Figure 31: Misc.



Figure 32: Misc.



Damage 1: Rear bumper: Rear bumper - Scratch(es) - Smart repair



Damage 1: Rear bumper: Rear bumper - Scratch(es) - Smart repair



Damage 2: Front bumper: Front bumper - Scratch(es) - Paint



Damage 2: Front bumper: Front bumper - Scratch(es) - Paint



Damage 2: Front bumper: Front bumper - Scratch(es) - Paint



Wartungshistorie

(gemäß Auftraggeber Informationen)

Fahrgestellnummer: WVVZZZ3C9RE016303

Hersteller / Modell: VOLKSWAGEN VW Passat Variant 2.0 TDI SCR DSG Business

Datum	KM-Stand	Beschreibung
15.08.2025	61.662	Motoröl b. Wartung; Ölfilter ern; Regelwartungsdienst; Wartung Sonstiges
02.01.2025	34.414	Systemtest/Eigendiagnose
07.11.2024	30.987	Motoröl b. Wartung; Ölfilter ern; Regelwartungsdienst; Wartung Sonstiges