



# Assessment

- Vehicle Inspection Report -

Number: 10560822  
From: 06.05.2026

## » Overview

**Order number:** 1002434988  
**Order completed:** 06.05.2026 15:07  
**Report number:** 10560822  
**VIN:** WVVZZZCD9RW024470



Front Left 3/4



Rear Right 3/4



Mileage



# Assessment

- Vehicle Inspection Report -

Number: 10560822  
From: 06.05.2026

## » Vehicle Data

<b>Vehicle category:</b>	Passenger Car
<b>Vehicle type:</b>	SmallCar
<b>Make:</b>	Volkswagen
<b>Model:</b>	Golf
<b>Manufacturers and type code:</b>	0603 / CMI
<b>Date of first registration:</b>	19.12.2023
<b>Mileage:</b>	48,415 km
<b>Proof of mileage:</b>	ReadOff
<b>Exterior colour:</b>	Uranograu
<b>Roof colour:</b>	Uranograu
<b>Propulsion:</b>	Front
<b>Fuel:</b>	Petrol
<b>Engine size (cc):</b>	2,000 ccm
<b>Performance:</b>	180 kW (245 PS)
<b>Length:</b>	4,284 mm
<b>Height:</b>	1,491 mm
<b>Width:</b>	1,789 mm
<b>Permitted total weight:</b>	1,810 kg
<b>Wheelbase:</b>	2,619 mm
<b>Number of powered axles:</b>	2
<b>Cylinders:</b>	4
<b>Euronorm:</b>	Euro 6
<b>Number of doors:</b>	5
<b>Number of seats:</b>	5
<b>Gearbox:</b>	Automatic 7-speed
<b>Upholstery type:</b>	Lining fabrics
<b>Interior colour:</b>	Soul-Schwarz - Tornadorot/Soul-Schwarz/ Schwarz/Soul-Schwarz
<b>Number of keys:</b>	2

## » Documents & Maintenance

<b>Statutory inspection date:</b>	12.2026
<b>Registration certificate available:</b>	Yes
<b>Registration certificate received:</b>	Yes
<b>License plate:</b>	Both
<b>Maintenance book:</b>	Digital
<b>Maintenance:</b>	Not testable
<b>Maintenance last date:</b>	
<b>Maintenance last mileage:</b>	



# Assessment

- Vehicle Inspection Report -

Number: 10560822  
From: 06.05.2026

12-V outlet in luggage compartment	Driving Mode Selection
2 LED reading lights in front and 2 in rear	Driving on the right
2 USB-C ports in the front, 2 USB-C charging sockets on the center console in rear, charging capacity up to 45 W	Dual-clutch transmission DSG DQ381
3 head restraints in rear	Dynamic headlight range control
30-color ambient lighting, illuminated center console storage compartment in front	Dynamic Road Sign Display
3-point seat belts for the outer rear seats	Electromechanical parking brake with Auto Hold function
3-point seat belts in front with height adjustment and seat belt pretensioners	Electronic immobilizer
4 alloy wheels "Richmond" 7.5J x 17	Electronic restriction of top speed
4-cylinder SI engine 2.0 l	Electronic Stability Control and electromechanical brake booster
4-cylinder SI engine 2.0 l TSI, 180 kW	Emergency call service, 10-year contract duration as of initial delivery, condition: mob. phone network available
6+1 speakers	Emission standard EU6 AP
7-speed automatic transmission or dual-clutch transmission DSG, note: PR family EDF	Equipment options subset for Germany
Activated carbon canister (Evaporative Emission Control System (EVAP))	Ext. mirrors, power-adjustable and heated, with memory feature and front passenger ext. mirror lowering function
Air Care Climatronic 3 zone automatic climate control w/ allergen filter, enhanced air filter a. controls in rear	Extended pedestrian protection
Alternator 140 A	Exterior mirrors: aspherical on driver side, convex on front passenger side
App-Connect Wireless for Apple CarPlay and Android Auto	First aid kit, warning triangle and safety vest
Auto. Emergency Braking Front Assist with Pedestrian and Cyclist Monitoring	Four-link suspension
Automatic headlight control with LED separate daytime running light and entry and exit lighting	Front center armrest, height- and longitudinally adjustable
Basic equipment variant	Front differential lock
Battery 420 A (70 Ah)	Front head restraints integrated into the seat
Body-colored bumpers, air intake in honeycomb structure	Front seats with height adjustment
Body-colored exterior mirror housings and door handles	Front stabilizer bar
Car2X	Front-wheel drive
Carpet mats in front and rear	Fuel system for fuel-injected SI engine
Chrome elements on power mirror and window regulator switches, chrome trims on the vents	Gearshift knob/handle in aluminum
Cornering light and poor weather light	Green heat-insulating glass windows on sides and in rear
Curtain airbags in front and rear, side airbags in front, center airbag	Hatchback
Decorative inserts "Black Metal Chrome" for dashboard and front door trim panels	Headliner
Delivery "Autostadt Wolfsburg"	Illuminated molding between headlamps and illuminated door handle recesses
Delivery with snow tires	Illuminated vanity mirrors in sun visors
Digital radio reception DAB+	Initial standard fuel filling
Dimming interior rearview mirror	Inserts of front seats and outer rear seats in fabric "Scale Paper"
Disc brakes in front	Instrument cluster with electronic speedometer, odometer and trip odometer, tachometer
Disc brakes in rear	ISOFIX anchors for child seats on outer rear bench seats and on front passenger seat, compatible for i-Size
Diversity antenna for FM reception	Keyless Start without SAFELOCK
Door and side trim panel	Laminated safety glass windshield, heat- and sound-insulating
Driver alert system	Lane keeping system Lane Assist
Driver and front passenger airbag with front passenger airbag deactivation	Leather-wrapped multi-function sports steering wheel with touch control and shifting paddles



# Assessment

Number: 10560822  
From: 06.05.2026

- Vehicle Inspection Report -

LED light unit in front footwell, selectable light color	Standard battery/alternator capacity
LED Plus headlamps	Standard climatic zones
LED rear combination lamps	Standard curb weight range
Left-hand drive	Standard electronic engine sound
LongLife Service Regime	Standard engine starter
Lumbar supports in front	Standard manufacturing sequence
Manual in German (Germany)	Standard paint coating
Mobile phone interface with inductive charging feature	Standard rear seat release
Multi-color Digital Cockpit Pro, selection of different info profiles possible	Standard roof
Multifunction camera	Start-stop system with regenerative braking
Nameplate set "GTI"	Surround lighting with welcome light
Navigation system "Discover Media" incl. Streaming & Internet	Suspension range 39 installation control only, no requirement forecast
Navigation system "Discover Media" incl. Streaming & Internet	Tailgate/trunk lid unlocking from outside
No special edition	Tire Mobility Set: 12-volt compressor and tire sealant
No special purpose vehicle, standard equipment	Tire Pressure Monitoring System
Non-folding front passenger seat backrest	Tires 225/45 R17 with sporty vehicle dynamics
Non-smoker's package: Storage compartment and 12-V outlet in front	Tool kit and jack
Not hot country	Top sports equipment
Oncoming vehicle braking when turning and swerve support	Transport protection film (minimum protection) with additional transport protection measures
Online service, with OCU, with head unit coding, without engine immobilizer interconnection	Two-tone horn
Operating permit, alteration	Type approval country Germany
Operating voltage 12 V	Unsplit rear bench seat, asymmetric split folding backrest, with center armrest
Park Distance Control - warning signals for obstacles in the front and rear	UWB-capable country and carrier frequency, 433.92 to 434.42 MHz
Part set without country-specific prescriptive standard	Vehicle class differentiation -5H0-
Pedals in brushed stainless steel	Vehicles without special upgrade measures
Premium sports seats in front	Warning signal and warning light for front and rear seat belts not fastened
Preparation for We Connect and We Connect Plus or VW Connect and VW Connect Plus	Weight range 3 installation control only, no requirement forecast
Progressive steering	Wheel locks with extended theft protection
Radio	Wheelbase
Rear exhaust tailpipe (standard)	Windshield wiper intermittent control with light sensor
Rear floor panel module, type 1	Winter wheels "Nottingham" (addition.), 4 alloy wheels 6.5J x 17, snow tires 205/50 R17 H
Rear fog light on one side, back-up light on both sides	Winter wheels "Nottingham" (addition.), 4 alloy wheels 6.5J x 17, snow tires 205/50 R17 H
Rear stabilizer bar	Without additional decorative trims
Rear view camera system	Without additional front underbody guard
Refrigerant R1234yf	Without alcohol interlock
Regional code " ECE " for radio	Without alternative drive system
Service indicator 30 000 km or 2 years (variable)	Without auxiliary heater/parking heater
Shock absorption in front	Without charging cable
Special identification label for EC for M1 passenger vehicles	Without decals and emblems
Speed limiter in combination with online services	Without electric motor (hybrid)
Sports suspension	



# Assessment

- Vehicle Inspection Report -

Number: 10560822  
From: 06.05.2026

- Without extended safety system
- Without fire extinguisher
- Without headlamp washer system, without washer fluid level indicator
- Without head-up display
- Without heat accumulator/auxiliary heater
- Without heated washer nozzles
- Without hill start assist/hill descent control/comfort driving assist
- Without lane change assist
- Without light control
- Without locking and starting systems
- Without mode 3 charging cable
- Without partition
- Without preparation for rotating beacon/siren combination
- Without preparation for two-way radio installation
- Without roof rails
- Without seat heater
- Without seat ventilation/massage seat
- Without second battery
- Without special body measures
- Without speed limiter
- Without trailer hitch
- Without UN-ECE cybersecurity & software update
- Without voice control



# Assessment

- Vehicle Inspection Report -

Number: 10560822  
From: 06.05.2026

## » Tyres

### MOUNTED TYRES

Make	Location	Position	Type	Rim	Dimensions	Profile depth
Bridgestone	Front	Left	Winter	Aluminium	205/50 R 17 93 H	1.0 mm
Bridgestone	Front	Right	Winter	Aluminium	205/50 R 17 93 H	1.0 mm
Bridgestone	Rear	Left	Winter	Aluminium	205/50 R 17 93 H	4.0 mm
Bridgestone	Rear	Right	Winter	Aluminium	205/50 R 17 93 H	4.0 mm

**Permitted:** Yes**Roadworthy:** No

### UNMOUNTED TYRES

Make	Location	Position	Type	Rim	Dimensions	Profile depth
Bridgestone			Summer	Aluminium	225/45 R 17 91 W	4.0 mm
Bridgestone			Summer	Aluminium	225/45 R 17 91 W	4.0 mm
Bridgestone			Summer	Aluminium	225/45 R 17 91 W	5.0 mm
Bridgestone			Summer	Aluminium	225/45 R 17 91 W	5.0 mm

**Permitted:** Yes**Roadworthy:** Yes

### SPARE/EMERGENCY TYRE & ACCESSORIES

**Toolkit present:** Yes**Repair kit present:** Yes**Repair kit expiration date:** 08.2027**Compressor present:** Yes**Jack present:** Yes



# Assessment

- Vehicle Inspection Report -

Number: 10560822  
From: 06.05.2026

## » Devaluation Factors

Nr	Location	Damage type	Repair type
1	Bumper spoiler F	Broken	Replace
2	Tyre FL	Worn	Replace
3	Tyre FR	Worn	Replace
4	Engine insulation	Damaged	Replace

## » Usage Damages

The vehicle shows signs of wear consistent with its age, mileage and purpose.



# Assessment

- Vehicle Inspection Report -

Number: 10560822  
From: 06.05.2026

## » Commercial devaluation

<b>Known previous damages:</b>	No
<b>Previous damages detectable:</b>	No
<b>Repainting present:</b>	No
<b>Paint thickness measurement performed:</b>	Yes - no abnormalities/deviations

### PAINTHICKNESS MEASUREMENT RESULTS

The measured values were in the usual range.

At least 3 measurements were carried out per component.



# Assessment

Number: 10560822  
From: 06.05.2026

- Vehicle Inspection Report -

## » Notes On The Assessment

<b>Details of the assignment and the scope of the assessment:</b>	<p>The order was placed to prepare a condition report on the described vehicle.</p> <p>The vehicle condition assessment was carried out in accordance with the order on the basis of the standards for vehicle assessments specified by the client. The expert makes the findings in the individual case on the basis of his own expertise and at his own expert discretion.</p>
<b>Vehicle identification:</b>	<p>WVWZZZCD9RW024470</p> <p>VIN checked and matches documentation</p>
<b>Vehicle condition:</b>	Well maintained general condition
<b>Inspection condition:</b>	Sufficient
<b>Lifting platform/lifting equipment used:</b>	Yes
<b>Testdrive carried out:</b>	Yes
<b>Engine test carried out:</b>	Yes



# Assessment

- Vehicle Inspection Report -

Number: 10560822  
From: 06.05.2026

## » Remarks

This copy was generated electronically. It is valid without an original signature.

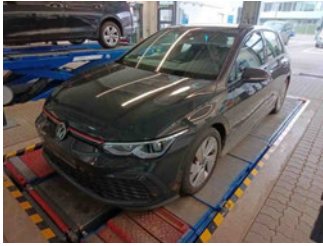


# Assessment

- Vehicle Inspection Report -

Number: 10560822  
From: 06.05.2026

## » Commercial Pictures



Front Left 3/4



Front Right 3/4



Rear Left 3/4



Rear Right 3/4



Mileage



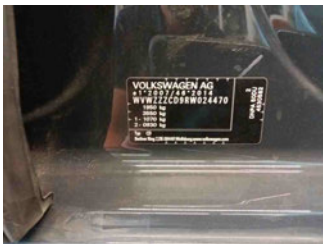
Tools



Sill outer L



Sill outer R



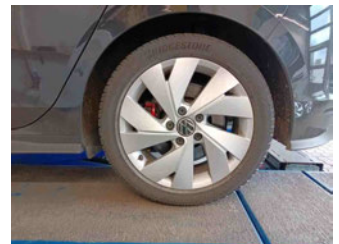
Chassis nr



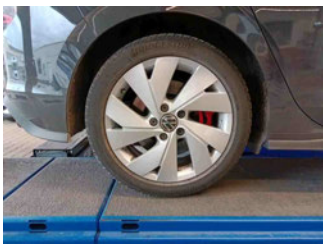
Wheel FL



Wheel FR



Wheel RL



Wheel RR



Additional wheel 1



Additional wheel 2



Additional wheel 3



Additional wheel 4



Central console



Engine compartment



Documents



# Assessment

- Vehicle Inspection Report -

Number: 10560822  
From: 06.05.2026



Interior arrangement



Registration Certificate



Tyres in vehicle



History Maintenance



Interior - front



Interior - rear



Tirefit expiration date



Underbody scan



GPS/Radio



# Assessment

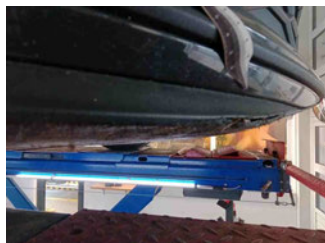
- Vehicle Inspection Report -

Number: 10560822  
From: 06.05.2026

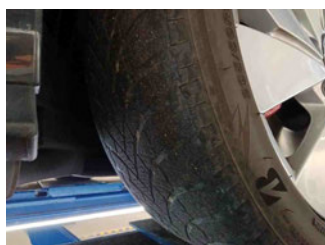
## » Devaluation Damages

### DEVALUATION FACTORS

1 - Bumper spoiler F - Broken - Replace



2 - Tyre FL - Worn - Replace



3 - Tyre FR - Worn - Replace



4 - Engine insulation - Damaged - Replace

