



**BMW 3**

|                                     |                          |                         |                  |
|-------------------------------------|--------------------------|-------------------------|------------------|
| Vinnumber:                          | <b>WBA6N91060FM08608</b> | Versionname:            |                  |
| First Registrationdate:             | <b>15/12/2021</b>        | Fiscalpower:            |                  |
| Expertise Mileage:                  | <b>114424</b>            | Power Kw:               |                  |
| Bodytype:                           |                          | Body colour:            | <b>Grey</b>      |
| Gearbox:                            | <b>Automatic</b>         | Type of rims (mounted): | <b>Aluminium</b> |
| Transmission:                       |                          | Parking lot:            | <b>1207</b>      |
| Fueltype:                           | <b>Hybrid Petrol</b>     |                         |                  |
| Type of rims (mounted):             | <b>Aluminium</b>         |                         |                  |
| Certificate of Conformity:          | <b>Yes</b>               |                         |                  |
| Category:                           | <b>Passenger Car</b>     |                         |                  |
| Registration Certificate Car (BE):  | <b>Yes</b>               |                         |                  |
| Registration Certificate Home (BE): | <b>No</b>                |                         |                  |

**Options**

|                                 |                                  |                        |                   |
|---------------------------------|----------------------------------|------------------------|-------------------|
| Number of keys total:           | <b>2</b>                         | Luggage cover:         |                   |
| Cruise Control:                 |                                  | Front parking sensors: |                   |
| Steering wheel multifunctional: |                                  | Rear parking sensors:  |                   |
| Seats F heated:                 |                                  | Type of Tow bar:       | <b>No Tow bar</b> |
| Radio multimedia:               |                                  |                        |                   |
| Type of headlighting:           | <b>Headlighting LED</b>          |                        |                   |
| Type of GPS:                    | <b>GPS big screen color</b>      |                        |                   |
| Type of Lining:                 | <b>Lining artificial leather</b> |                        |                   |
| Type of climate control:        | <b>Autom climate control</b>     |                        |                   |

**Limited Technical Inspection**

**Tyres**

| <b>225/50/17/93 Y</b> |       |                          |       |                          |
|-----------------------|-------|--------------------------|-------|--------------------------|
| Summer tyres:         | Fr.L. | <b>Continental: 4 mm</b> | Fr.R. | <b>Continental: 4 mm</b> |
|                       | Re.L. | <b>Continental: 4 mm</b> | Re.R. | <b>Continental: 4 mm</b> |
| Tyre profile depth FL |       |                          |       | <b>4.0</b>               |
| Tyre profile depth FR |       |                          |       | <b>4.0</b>               |
| Tyre profile depth RL |       |                          |       | <b>4.0</b>               |
| Tyre profile depth RR |       |                          |       | <b>4.0</b>               |
| Tyre size FL          |       |                          |       | <b>225/50 R 17 93 Y</b>  |
| Tyre size FR          |       |                          |       | <b>225/50 R 17 93 Y</b>  |
| Tyre size RL          |       |                          |       | <b>225/50 R 17 93 Y</b>  |
| Tyre size RR          |       |                          |       | <b>225/50 R 17 93 Y</b>  |
| Tyre type FL          |       |                          |       | <b>Summer</b>            |
| Tyre type FR          |       |                          |       | <b>Summer</b>            |
| Tyre type RL          |       |                          |       | <b>Summer</b>            |
| Tyre type RR          |       |                          |       | <b>Summer</b>            |
| Tyre make FL          |       |                          |       | <b>256</b>               |
| Tyre make FR          |       |                          |       | <b>256</b>               |
| Tyre make RL          |       |                          |       | <b>256</b>               |
| Tyre make RR          |       |                          |       | <b>256</b>               |

**Assistance equipment**

|   |          |
|---|----------|
| Number of charging cables (normal):       | <b>1</b> |
| Number of charging cables (rapid charge): | <b>1</b> |

|                                   |               |
|-----------------------------------|---------------|
| Total cost ex VAT                 | <b>133,03</b> |
| Bumper F, Scratch(es), Acceptable | <b>0,00</b>   |



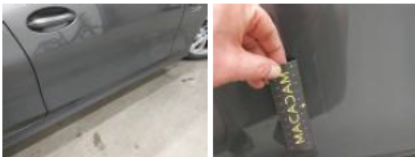
Bonnet, Stone chip(s), Acceptable 0,00



Bumper R, Scratch(es), Acceptable 0,00



Door FR, Scratch(es), Acceptable 0,00



Alloy rim RR, Scratch(es), Repair and paint (complete) 133,03

