

Expertise

Protocol number: 46314790
Order No. / Reference: 26325649
Inspection date: 1 Jul 2026

Manufacturer: Audi

Model: A6 40 TDI S tronic

VIN: WAUZZZF22RN033914



Vehicle details

Manufacturer / Type / Model / Equipment

Audi A6 40 TDI S tronic

Vehicle Identification number WAUZZZF22RN033914

Mileage (Read) 74,473 km

First registration 26 Mar 2024

Number of holders 1

Power / Engine displacement 150 kw / 1,968 ccm

Fuel type / Cylinder Hybrid Diesel / E / 4

Gearbox / Number of gears Automatic / 7

Type of drive Front drive

Type of vehicle Saloon car

Colour / colour code MythosSchwarz Metallic (Y9T)

Doors / Seats 4 / 5

Upholstery type Cloth

Colour of upholstery Black-Anthracite

Vehicle with smoke odor no



Vehicle details

Maintenance booklet / proof	digital evidence / incomplete	Next maintenance in	-4 Monat(e)
Key is / should be	2 / 2	FZG documents	ZB#2 (B) was available (copy), ZB#1 (S) was not available.
		Letter No.	HA915849
Previous damage / Accident	Detectable	Repainting	Detectable
Inspection conditions	sufficient	Lifting equipment / pit	yes
Test drive	Not performed	Engine function test	Performed
Manufacturer key number/ type code number	0588 / BTN 03572		
Emission standard	EURO6;WLTP;EA;PI/CI;M, N1, N2	fine dust sticker	
Permitted total weight	2,255 kg	Empty weight	

Tyres

Mounted tyres

#	Tyre size	Type of tyre	Manufacturer	Tread depth
1)	225/55 R18 102V	Winter tyres on Light alloy	Goodyear	7mm / 7mm
2)	225/55 R18 102V	Winter tyres on Light alloy	Goodyear	6mm / 6mm

Additional tyres

#	Tyre size	Type of tyre	Manufacturer	Tread depth
1)	225/55 R18 102W	Summer tyres (Without wheel rim)	Hankook	7mm / 7mm
2)	225/55 R18 102W	Summer tyres (Without wheel rim)	Hankook	7mm / 7mm

Replacement

Typ	Tyre size	Type of tyre	Manufacturer	Tread depth
Tirefit		Expiration date 02/2029		

Legend: Tread depth information for the left tire is listed first, for the right tire it is listed second on the axle in the direction of travel.



Equipment

Standard equipment

- AdBlue tank (12 liters)
- Airbag: Front side airbags and head airbag system
- Audi connect navigation & infotainment
- Audi drive select
- Audi pre sense front
- Electrically adjustable and heated exterior mirrors
- Control buttons, matte black
- third brake light
- Decorative inlays, fine lacquer, graphite grey
- Tachometer
- Parking aid plus with surround view
- Electronic Stability Control (ESC)
- Automatically opening luggage compartment lid/manually opening luggage compartment lid
- Interior lighting
- ISOFIX child seat attachment and Top Tether for the outer rear seats
- Headrests (4)
- LED headlights
- Manual steering wheel adjustment
- MMI navigation with MMI touch response
- Progressive steering
- Wheel: Tire pressure monitoring system
- Radio: MMI Radio plus with MMI touch response
- Fabric seat covers with effect
- Sun visor on driver and passenger side
- Start-stop system
- Glazing: Windscreen in heat-insulating glazing
- Glazing: Rear window, rear door and side windows in clear glass
- Thermal insulation glazing on the sides and rear
- Airbag for driver and front passenger
- Anti-lock braking system (ABS)
- Audi connect emergency call & service m.connect remote & control
- Audi virtual cockpit plus
- Exterior mirror housings in body color
- Vehicle tool kit
- Fabric headliner
- Diesel particulate filter (DPF) with nitrogen oxide catalyst and AdBlue tank
- Door sills with aluminum inlay front and rear
- key fob
- Cruise control system with speed limiter
- Transmission: S tronic 7-speed
- Interior mirror dimming
- 2-zone automatic climate control
- Comfort center armrest in front
- Paint finish: Solid
- Steering wheel: Leather steering wheel with multifunction controls
- Non-smoking version
- Wheel: Alloy wheels, 10-spoke design
- Wheel: Tire repair kit
- Radio accessories: 8 speakers (passive) front and rear
- Seats: Standard front seats
- Lane Departure Warning
- First aid kit including warning triangle and high-visibility vests
- Camera-based traffic sign recognition
- Electronic immobilizer
- Central locking



Extra equipment

- AdBlue tank with increased filling volume (AdBlue tank with 22 liter filling volume - for diesel vehicles with SCR technology, to reduce nitrogen oxides in the exhaust gas)
- Ambient lighting package (in addition to the standard interior lighting:
 - Ambient fabric lighting in the front/rear doors - Approach lighting from the outer door handles, front/rear - Ambient lighting of the instrument panel - Entry lights on the underside of the rear doors)
- Electrically opening and closing tailgate (The tailgate can be opened electrically by pressing the button on the vehicle key, in the driver's door, or the soft-touch button on the tailgate handle. To close the tailgate: simply press the button on the inside of the tailgate, the button in the driver's door, or the button on the vehicle key. A6 Avant: Opening the tailgate in low-ceiling areas is made easier by a programmable opening angle.)
- Front seat heating (heats seat and backrest center panels; with leather upholstery, sport seats and sport seats plus also seat side bolsters - individually adjustable in multiple stages for driver and front passenger side via the climate control unit)
- Fuel tank (73 liters) (fuel tank for 73 liters of gasoline/diesel fuel)
- Seats: 4-way lumbar support (electrically adjustable, horizontally and vertically)
- Steering wheel: Sport contour leather steering wheel in 3-spoke design, multifunction and shift paddles, flattened at the bottom (shift paddles allow manual changing of the driving modes.)
- Telephone: Application Store and Smartphone Interface (The Audi App.Store in the vehicle's MMI provides access to a wide selection of popular apps, such as news and podcasts, sports and games, or video and entertainment. These can be downloaded directly to the vehicle and are usable within the framework of legal regulations. - The smartphone interface connects the smartphone to the vehicle and seamlessly displays smartphone content directly on the MMI display. The connection can be made via USB cable or wirelessly. - Voice control)
- 4-zone automatic climate control (in addition to the features of 2-zone automatic climate control: - Separate temperature distribution for front passenger side as well as temperature setting and air distribution in the rear left/right - Air outlet nozzles in the B-pillar - Rear climate control panel with touch operation - Climate zone regulation via occupant detection - Automatic recirculation mode and sun-position-dependent regulation - Defroster nozzles for windshield and side windows - Dust and odor-removing cabin air filter - Residual heat utilization - Personalized climate profiles)
- Black fabric headliner
- Deletion of model designation and performance/technology lettering
- Electrically adjustable, heated and folding exterior mirrors (including curb view function for the passenger-side exterior mirror with integrated LED turn signal, including heated windshield washer nozzles, aspherical mirror glass. The curb view function tilts the passenger-side exterior mirror downwards when reverse gear is engaged, providing the driver with a better view of the curb.)
- ISOFIX child seat attachment for the front passenger seat (with deactivation switch for passenger airbag including electric child safety lock for the rear doors)
- Paint finish: Metallic
- Radio accessories: Audi sound system (10 speakers including center speaker and subwoofer - 6-channel amplifier - total output of 180 watts)
- Seats: Split-folding rear seat backrest (pronounced outer rear seats, visually adapted to the front seats, and an additional central seat option - 3 L-shaped rear headrests, manually height-adjustable for good rear visibility - three 3-point seat belts - rear seat backrest split 40:20:40 or fully foldable - one-piece, foldable rear center armrest with storage compartment)
- Wheel: Audi new car tire warranty
- Wheel: Light alloy wheels 10-twin-spoke segment design, graphite grey (8 J x 18 with tires 225/55 R 18)

Brief expert findings

Documents submitted	At the time of the inspection, the vehicle registration certificate Part 2 (title) was available, but the vehicle registration certificate Part 1 (document) was not. (Copy)
VIN comparison	The vehicle identification number (VIN) was read from the vehicle and its conformity with the submitted documents was confirmed by the undersigned during the inspection.
Inspection	The inspection conditions were sufficient for the assessment of the vehicle. Lifting equipment and/or a pit were available for examining the vehicle.
Test drive	No test drive/shunting maneuver was carried out during the inspection of the vehicle.
Engine function test	An engine test run was performed.



Value reducing factors

No.	Component group	Description
1	Braking system	Brake discs - rear (Freibremsten) - Corrosion
2	Rear bumper	Rear bumper - Scratch(es) - Smart repair
3	Misc.	Inspection / maintenance - Due - Perform

Wear and tear

No.	Component group	Description
1	Misc.	Inspection / maintenance - No evidence - No deduction
2	Vehicle glazing	Windscreen - Stone chips - No deduction
3	Side panel - rear left side	Sill - Scratch(es) - No deduction
4	Body	Body - Scratch(es) - No deduction
5	Front bumper	Front bumper - Stone chips - No deduction

The vehicle shows signs of wear and tear commensurate with its age and use.

Previous damages

No.	Previous damage	Extent of damage (Net)
1	Front, Side - left, Provided by user / customer, from 21 Oct 2025	5.218,27 €

Repainting

No.	Repainting
1	Bonnet, Professionally carried out, Invoice of repair done Non-existent

Paint coat thickness measurement

Bonnet	219 µm
--------	--------

Order/Scope of Order

An order was placed to prepare a sales report for the described vehicle. This report includes the following:

- Description of key vehicle information
- Documentation of equipment features
(*Delivery by third-party service providers*)
- Documentation of damage, defects, missing parts
- Documentation of prior damage, unrepaired prior damage, repainting
- A brief visual or functional inspection of the equipment details, if possible.
(*Functional testing of driver assistance systems is not included in the scope of services!*)
- a photographic documentation of the vehicle



Basis for the order

This product is based on the guidelines for vehicle returns and valuations published by Alphabet Fleet GmbH. The expert makes the specific findings in each individual case objectively, within the framework of the prescribed standards, based on their own expertise.

The vehicle inspection takes place in a fully assembled, unassembled state.

Damage or defects that can only be detected during disassembly/diagnostic work or through further investigation remain within the realm of prognostic risk. An increased risk exists due to concealed defects caused by fraudulent misrepresentation and which were not identifiable by the expert.

Damage or defects resulting from normal use or wear and tear of the vehicle will be accepted in accordance with the applicable standard.

There was no explicit identification or monetary consideration of the expected features within the product.

Features which, in their nature and extent, slightly exceed normal use but do not constitute unacceptable damage, will be documented and indicated as signs of wear, if applicable.

Damage or defects that, according to the applicable standard, can no longer be attributed to normal use or wear and tear are listed under "Value Reducing Factors" in the product description.

Depending on the product specification, a monetary ID can be provided. If this takes place, the costs can be 100% d or pro rata depending on the vehicle's age and mileage.

Previous damages

According to available information previous damages were repaired at the vehicle. Traces of repairs, which allow conclusions about the area of repair, were not recognizable during the inspection.

Comments

Wenn sich die Bremsscheiben nicht freibremsten lassen entstehen Mehrkosten.

- Winterradsatz ist kein Bestandteil des Auslieferungsumfangs.



Figure 1: Diagonal front (left)



Figure 2: Diagonal front (right)



Figure 3: Diagonal rear (left)



Figure 4: Diagonal rear (right)



Figure 5: Interior - front



Figure 6: Interior - rear



Figure 7: Instrument cluster



Figure 8: Instrument panel



Figure 9: Interior 360° view



Figure 10: Cargo area



Figure 11: VIN



Figure 12: Mounted tyres



Figure 13: Documents



Figure 14: Documents

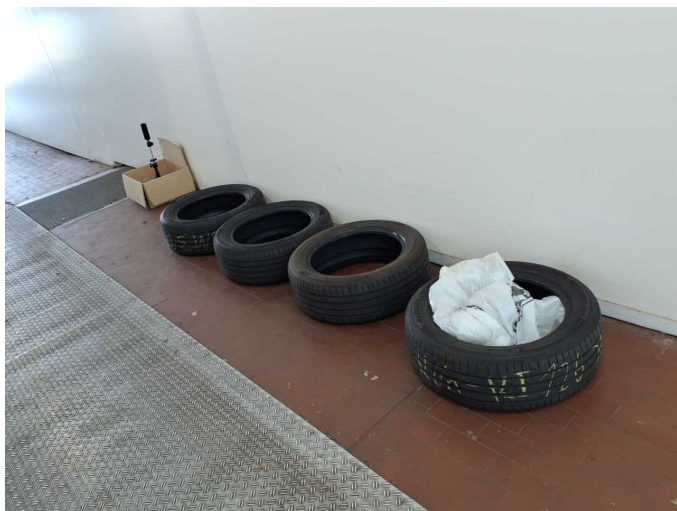


Figure 15: Additional tyres

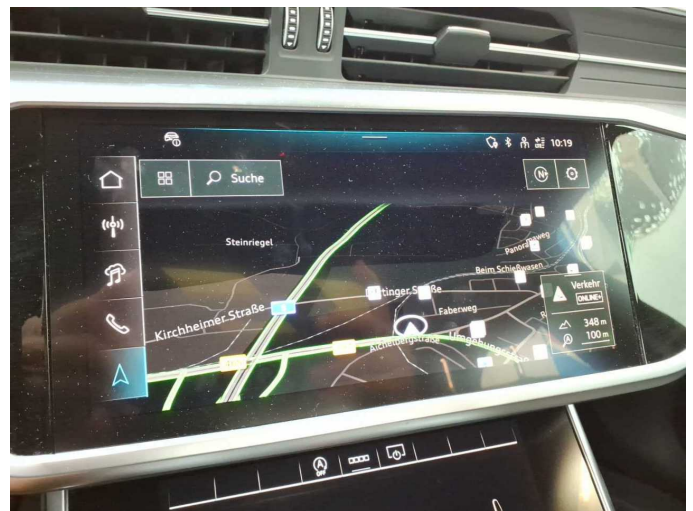


Figure 16: Navigation



Figure 17: Misc.

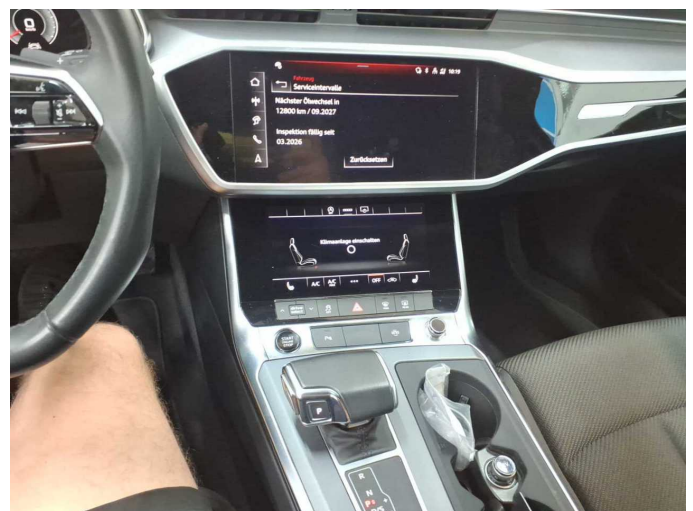


Figure 18: Misc.



Figure 19: Misc.



Figure 20: Misc.



Figure 21: Misc.



Figure 22: Misc.

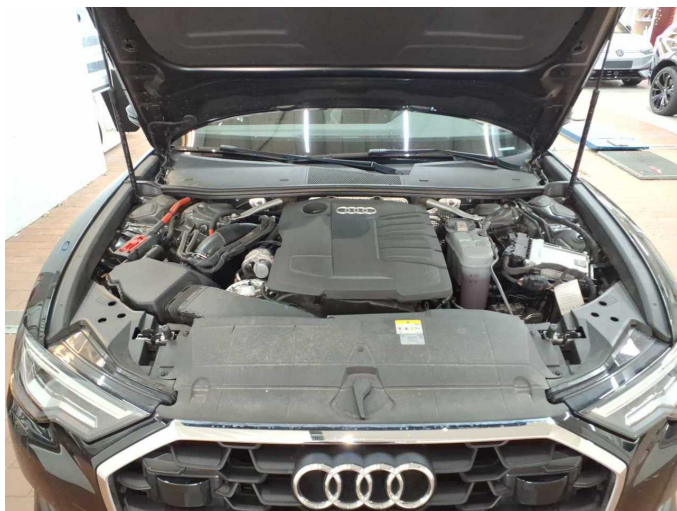


Figure 23: Misc.



Figure 24: Misc.



Figure 25: Misc.



Figure 26: Misc.



Figure 27: Misc.



Figure 28: Misc.



Damage 1: Braking system: Brake discs - rear (Freibremsen) - Corrosion



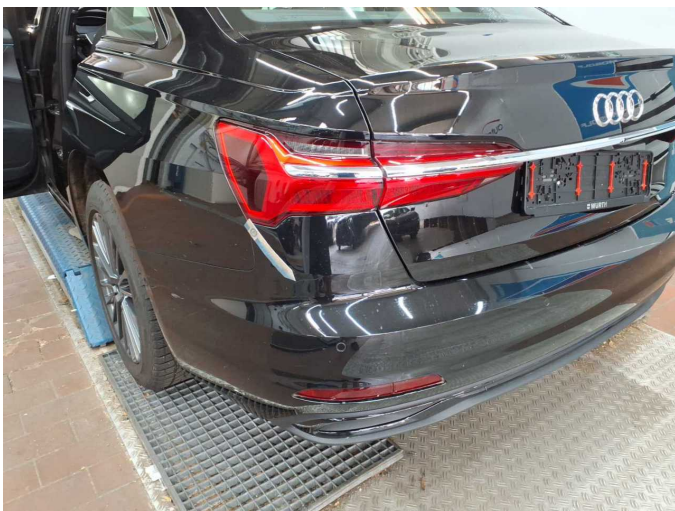
Damage 1: Braking system: Brake discs - rear (Freibremsen) - Corrosion



Damage 1: Braking system: Brake discs - rear (Freibremsen) - Corrosion



Damage 1: Braking system: Brake discs - rear (Freibremsen) - Corrosion



Damage 2: Rear bumper: Rear bumper - Scratch(es) - Smart repair



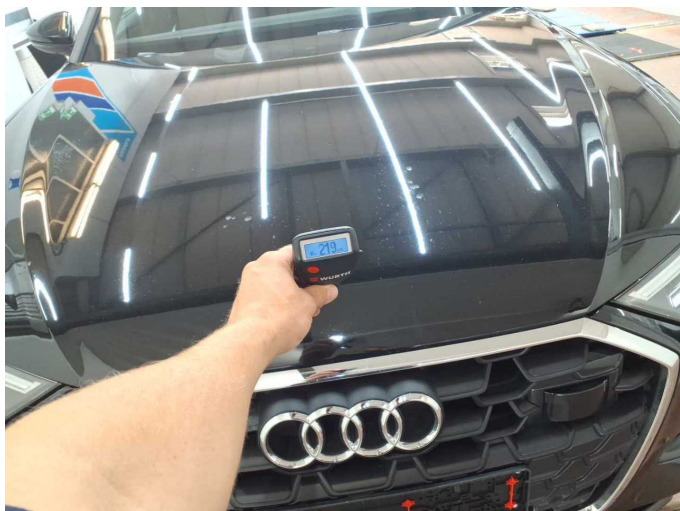
Damage 2: Rear bumper: Rear bumper - Scratch(es) - Smart repair



Damage 3: Misc.: Inspection / maintenance - Due - Perform



Damage 3: Misc.: Inspection / maintenance - Due - Perform



Repainting 1: Bonnet



Repainting 1: Bonnet