

Expertise

Protocol number: 46079554
Order No. / Reference: 26501269
Inspection date: 18 Jun 2026

Manufacturer: Skoda

Model: Enyaq iV 80x

VIN: TMBLE9NY2PF057177



Vehicle details

Manufacturer / Type / Model / Equipment

Skoda Enyaq iV 80x

Vehicle Identification number TMBLE9NY2PF057177

Mileage (Read) 50,610 km

First registration 16 Jun 2023

Number of holders 1

Next periodical technical inspection 06/2026
(Report not on hand)

Power / Engine displacement 77 kw /

Fuel type / Cylinder Electric / 0

Gearbox / Number of gears Direct drive / 1

Type of drive All-wheel drive

Type of vehicle Station wagon

Colour / colour code moonweiss-metallic (S9R)

Doors / Seats 5 / 5

Upholstery type Alcantara / Leather

Colour of upholstery Anthracite-Grey



Vehicle details

Maintenance booklet / proof	Non-existent	Next maintenance in	412 Tag(e)
Last service on / at	08/2025 at 31,398 km		
Key is / should be	2 / 2	FZG documents	ZB#2 (B) was available (copy), ZB#1 (S) was not available.
		Letter No.	GQ578963
Previous damage / Accident	Detectable	Repainting	None detectable
Inspection conditions	sufficient	Lifting equipment / pit	No
Test drive	Not performed	Engine function test	Performed
Manufacturer key number/ type code number	8004 / AWT 00037		
Emission standard	2017/1151;WLTP;reine Elektrofz	fine dust sticker	
Permitted total weight	2,750 kg	Empty weight	

Tyres

Mounted tyres

#	Tyre size	Type of tyre	Manufacturer	Tread depth
1)	235/50 R20 100T	Summer tyres on Light alloy	Hankook	6mm / 6mm
2)	255/45 R20 101T	Summer tyres on Light alloy	Hankook	6mm / 6mm

Additional tyres

#	Tyre size	Type of tyre	Manufacturer	Tread depth
1)	235/55 R19 101T	Winter tyres on Light alloy	Bridgestone	6mm / 6mm
2)	255/50 R19 103T	Winter tyres on Light alloy	Bridgestone	7mm / 7mm

Replacement

Typ	Tyre size	Type of tyre	Manufacturer	Tread depth
	Tirefit	Expiration date 04/2027		

Legend: Tread depth information for the left tire is listed first, for the right tire it is listed second on the axle in the direction of travel.

TÜV SÜD Auto Partner GmbH
Wiesenring 2
04159 Leipzig

Inspection location
Hartmann Fleet Professionals GmbH
Leerenstraße 25
29683 Bad Fallingbommel



Equipment



Standard equipment

- Storage compartments (Four roof grab handles, rear with coat hooks - Warning vest compartment in the doors - Storage compartments in the front door panels with 1.5l bottle holders - Storage compartments in the rear door panels - Umbrella compartments in the front doors - Ticket holder on the windshield - Ice scraper in the tailgate panel - Coat hooks on the B-pillars - Cup holder in the front center console - Storage compartments in the trunk)
- Evasive steering assist including turning assistant (The turning assistant monitors oncoming vehicles when you turn left (for left-hand drive vehicles). If there is an immediate danger, it brings the vehicle to a standstill and a warning signal sounds.)
- Design Selection Loft (seat covers in fabric/faux leather - decorative trim strips "brushed aluminum" - headliner in grey - front center armrest, including storage compartment - rear center armrest with cup holders and pass-through - floor mats - ambient lighting for front door panels, multicoloured - footwell lighting and illuminated door handle recesses - umbrella)
- Front radar assist with pedestrian and cyclist detection and city emergency braking function (The front radar assist is a safety system with collision warning: If confronted with an unavoidable collision, it brakes the vehicle to minimize the consequences. It also performs emergency braking if a pedestrian or cyclist attempts to cross the vehicle's path. The front radar assist recognizes from the way the driver moves the vehicle that they are attempting to avoid an obstacle and actively intervenes in the steering to steer around it.)
- Child safety locks on the rear doors
- Removable boot cover
- Front and rear headrests are height-adjustable.
- Charging cable for AC charging stations (Mode 3 charging cable, Type 2, 16A) (Fast charging connector (CCS / Combo 2))
- Steering wheel: Leather steering wheel with multifunction buttons
- Navigation system
- Front and rear parking sensors
- Radio: Infotainment system with capacitive 13" color display (2 x USB ports (Type-C) at the front - Digital radio reception DAB+ - Bluetooth hands-free phone system - Voice control - SmartLink (Apple CarPlay, Android Auto) - Wireless SmartLink)
- Rear view camera
- Rear seat backrest split 60:40, foldable
- Power steering
- Safety lights in the front side doors
- Seats: Front seats are height-adjustable, including manually adjustable lumbar support.
- Speed limiter
- Lane keeping assistant (Lane Assist)
- 12V socket - in the trunk
- Traffic sign recognition
- Immobiliser
- heat pump
- Airbag, center airbag front
- Airbag for driver and front passenger (passenger airbag can be deactivated)
- Airbag, front and rear head airbags
- Airbag, front side airbags
- acoustic windscreen
- Anti-lock braking system (ABS)
- Traction control (ASR)
- Electrically adjustable, heated and folding exterior mirrors, including automatic dimming.
- Outdoor temperature display
- Hill start assist
- AERO anodized roof rails
- Digital instrument cluster (Virtual Cockpit)
- Third brake light
- E-Sound (external speaker for generating a driving sound)
- Electronic parking brake including auto-hold function
- Increased battery charging power max. 125 kW
- ESC Electronic Stability Control
- Electric windows front and rear (including anti-pinch protection and child safety lock)
- Cruise control
- Transmission: 1-speed (EV)
- Tinted windows
- Heated rear window
- Rear window wiper including windshield washer system
- Automatic interior mirror dimming
- Isofix anchorage on the front passenger seat
- Isofix anchorage on the outer rear seats including top tether
- Climatronic air conditioning (2-zone) (fully automatic, separately adjustable for driver and front passenger, including odor and allergen filter)
- LED headlights with daytime running lights
- LED taillights
- Steering wheel adjustable for height and reach
- Manual headlight range adjustment
- Multi-collision brake
- Package: Chrome (chrome trim strips on the outside of the side windows - AERO anodized roof rails)
- Rain sensor and driving light assistant with coming and leaving home function
- Tire mobility kit (tire repair spray incl. compressor)
- Tire pressure monitoring
- Wheels: 19" Regulus AERO alloy wheels, anthracite polished (8Jx19, tires 235/55 R19 101T front, 255/50 R19 103T rear)
- Seat belts (Height-adjustable three-point seat belts in the front - Three three-point seat belts in the rear - Seat belt reminder indicators on the front and rear seats)



- Central locking including remote control integrated into the key (EASY START (keyless start-stop system))

- Skoda Care Connect (SOS emergency call function (eCall including automatic activation in the event of an accident with airbag deployment) - Free remote vehicle access to iV-specific functions for 10 years (iV Remote Services Basic) such as starting and stopping the charging process, creating charging plans, setting the interior climate control before starting the journey, etc. - Mobility service - Information service - Free remote vehicle access for 3 years (Remote Access) - Skoda Infotainment Online)

Extra equipment

- Swiveling trailer hitch (including trailer stabilization)
- Paint finish: Pearl effect
- Panoramic sunroof, electric (deletion of the glasses compartment in the headliner)
- Wheels: 20" Vega anthracite alloy wheels, polished

- Luggage net partition
- Package: Transport (Net program in the trunk incl. charging cable bag - Variable loading floor in the trunk - Remote release of the rear seat backrests in the trunk - Cargo elements in the trunk)

Brief expert findings

Documents submitted	At the time of the inspection, the vehicle registration certificate Part 2 (title) was available, but the vehicle registration certificate Part 1 (document) was not. (Copy)
VIN comparison	The vehicle identification number (VIN) was read from the vehicle and its conformity with the submitted documents was confirmed by the undersigned during the inspection.
Inspection	The inspection conditions were sufficient for the assessment of the vehicle. No lifting equipment or pit was available for inspecting the vehicle. Therefore, inspection of the vehicle's underside was only possible to a limited extent.
Test drive	No test drive/shunting maneuver was carried out during the inspection of the vehicle.
Engine function test	An engine test run was performed.

Value reducing factors

No.	Component group	Description
1	Trim / covers	Door trim - rear right side (Sonnenblenderollo) - Non-operational - Perform diagnosis
2	Front bumper	Front bumper - Scratch(es) - Smart repair
3	Door - rear right side	Door - Damage caused by marten / rodent - Smart repair
4	Door - front right side	Brightware - lower - Scratch(es) - Smart repair
5	Wheel / tyres	Alloy rim - front right side - Scratch(es) - Loss in value

Wear and tear

No.	Component group	Description
1	Vehicle glazing	Windscreen - Stone chips - No deduction
2	Bonnet	Bonnet - Stone chips - No deduction
3	Rear bumper	Rear bumper - Scratch(es) - No deduction

The vehicle shows signs of wear and tear commensurate with its age and use.

Previous damages

No.	Previous damage	Extent of damage (Net)
1	Rear, Provided by user / customer, from 5 Apr 2025	1.823,44 €



Order/Scope of Order

An order was placed to prepare a sales report for the described vehicle. This report includes the following:

- Description of key vehicle information
- Documentation of equipment features
(Delivery by third-party service providers)
- Documentation of damage, defects, missing parts
- Documentation of prior damage, unrepaired prior damage, repainting
- A brief visual or functional inspection of the equipment details, if possible.
(Functional testing of driver assistance systems is not included in the scope of services!)
- a photographic documentation of the vehicle

Basis for the order

This product is based on the guidelines for vehicle returns and valuations published by Alphabet Fleet GmbH. The expert makes the specific findings in each individual case objectively, within the framework of the prescribed standards, based on their own expertise.

The vehicle inspection takes place in a fully assembled, unassembled state.

Damage or defects that can only be detected during disassembly/diagnostic work or through further investigation remain within the realm of prognostic risk. An increased risk exists due to concealed defects caused by fraudulent misrepresentation and which were not identifiable by the expert.

Damage or defects resulting from normal use or wear and tear of the vehicle will be accepted in accordance with the applicable standard.

There was no explicit identification or monetary consideration of the expected features within the product.

Features which, in their nature and extent, slightly exceed normal use but do not constitute unacceptable damage, will be documented and indicated as signs of wear, if applicable.

Damage or defects that, according to the applicable standard, can no longer be attributed to normal use or wear and tear are listed under "Value Reducing Factors" in the product description.

Depending on the product specification, a monetary ID can be provided. If this takes place, the costs can be 100% or pro rata depending on the vehicle's age and mileage.

Previous damages

According to available information previous damages were repaired at the vehicle. Traces of repairs, which allow conclusions about the area of repair, were not recognizable during the inspection.



Figure 1: Diagonal front (left)



Figure 2: Diagonal front (right)



Figure 3: Diagonal rear (left)



Figure 4: Diagonal rear (right)



Figure 5: Interior - front



Figure 6: Interior - rear



Figure 7: Instrument cluster



Figure 8: Instrument panel



Figure 9: Interior 360° view



Figure 10: Cargo area



Figure 11: VIN



Figure 12: Mounted tyres



Figure 13: Documents



Figure 14: Additional tyres

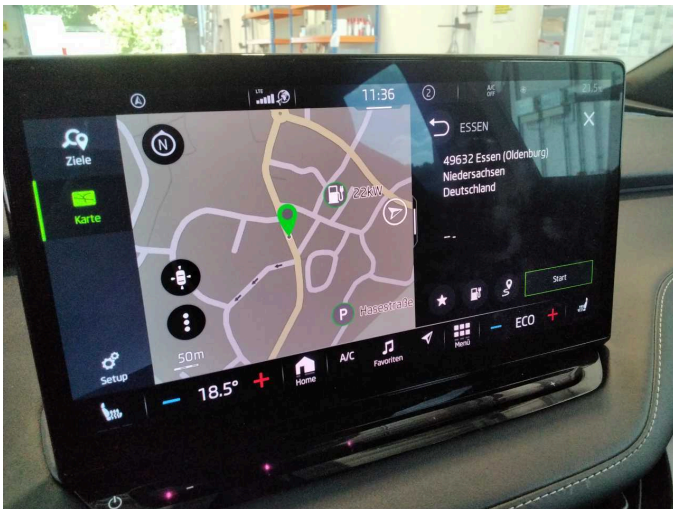


Figure 15: Navigation

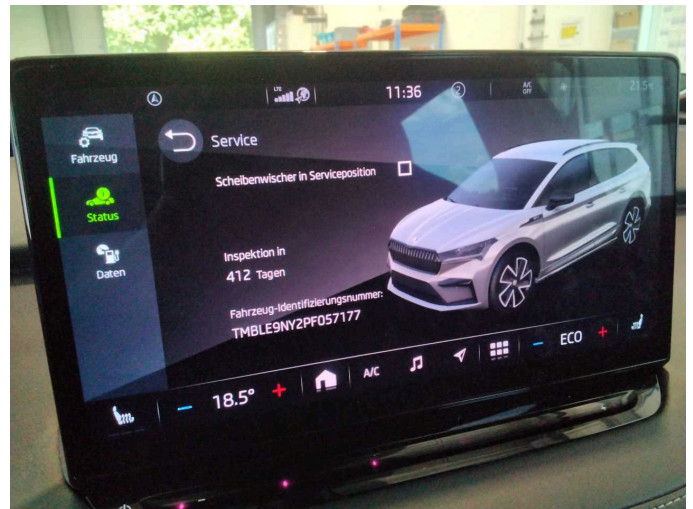


Figure 16: Misc.

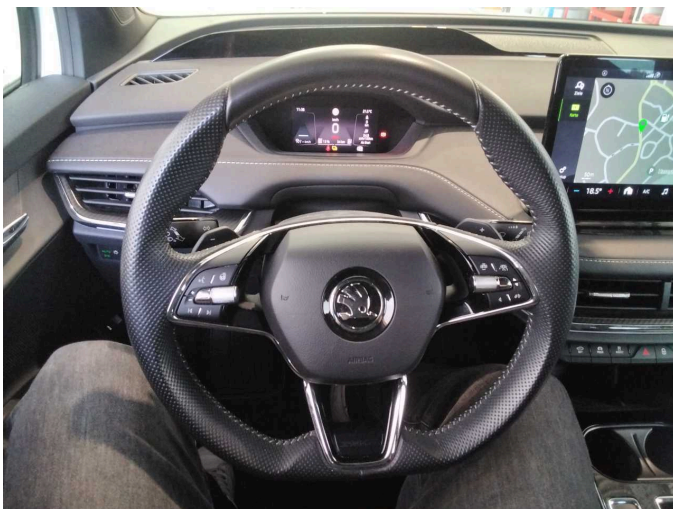


Figure 17: Misc.

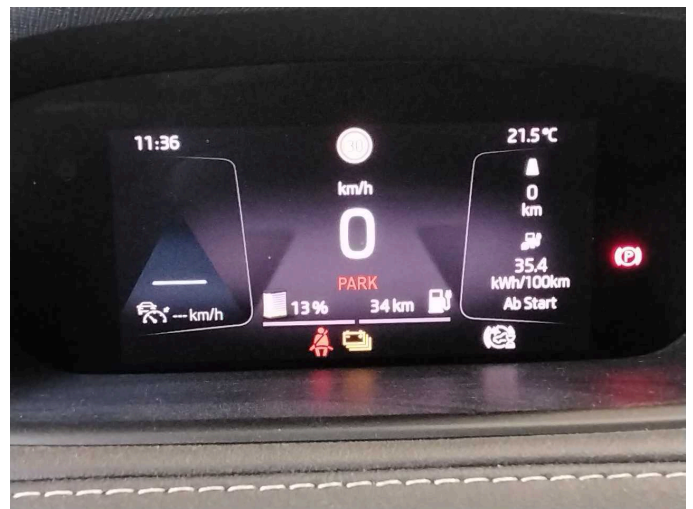


Figure 18: Misc.



Figure 19: Misc.



Figure 20: Misc.



Figure 21: Misc.



Figure 22: Misc.



Figure 23: Misc.



Figure 24: Misc.



Figure 25: Misc.



Figure 26: Misc.



Figure 27: Misc.



Figure 28: Misc.

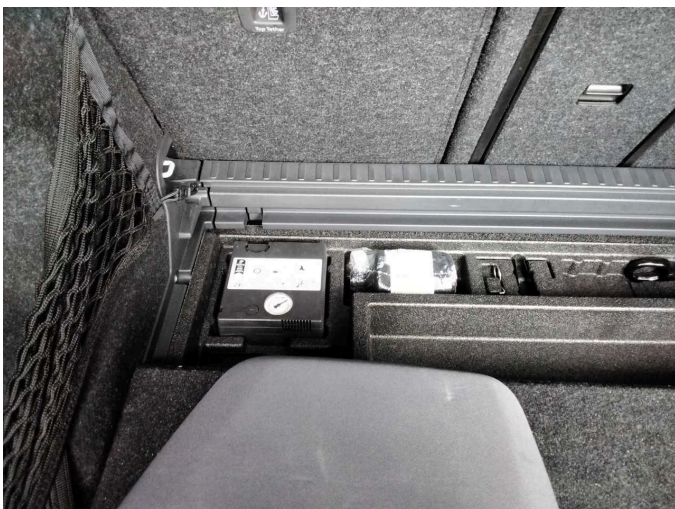


Figure 29: Misc.

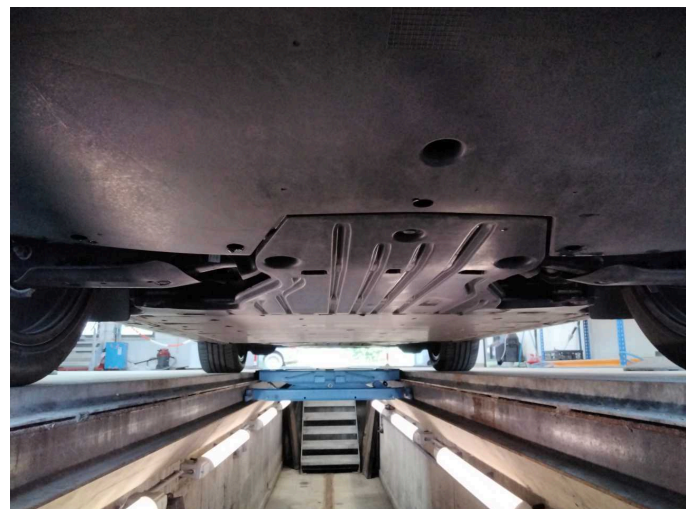


Figure 30: Misc.



Figure 31: Misc.



Damage 1: Trim / covers: Door trim - rear right side (Sonnenblenderollo) - Non-operational - Perform diagnosis



Damage 1: Trim / covers: Door trim - rear right side (Sonnenblenderollo) - Non-operational - Perform diagnosis



Damage 2: Front bumper: Front bumper - Scratch(es) - Smart repair



Damage 2: Front bumper: Front bumper - Scratch(es) - Smart repair



Damage 3: Door - rear right side: Door - Damage caused by marten / rodent - Smart repair



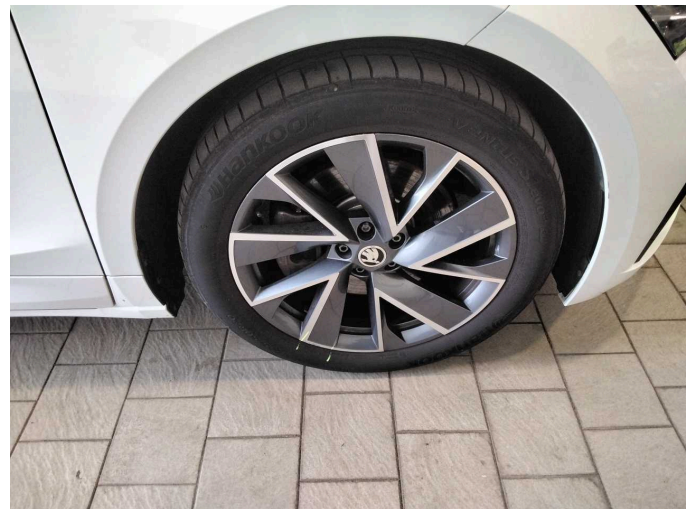
Damage 3: Door - rear right side: Door - Damage caused by marten / rodent - Smart repair



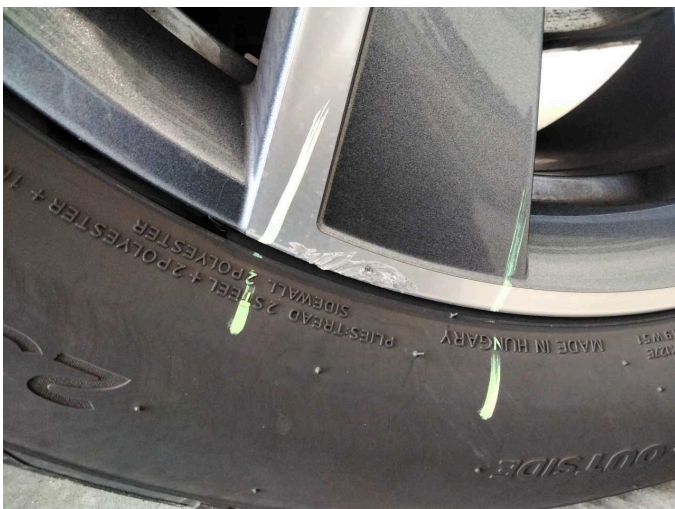
Damage 4: Door - front right side: Brightware - lower - Scratch(es) - Smart repair



Damage 4: Door - front right side: Brightware - lower - Scratch(es) - Smart repair



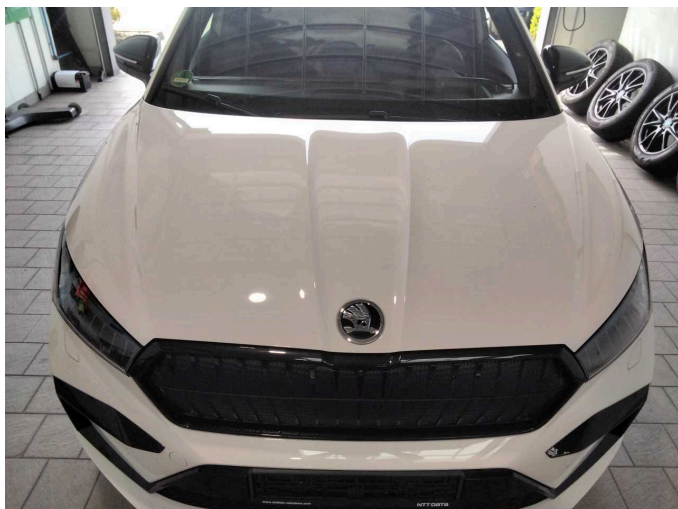
Damage 5: Wheel / tyres: Alloy rim - front right side - Scratch(es) - Loss in value



Damage 5: Wheel / tyres: Alloy rim - front right side - Scratch(es) - Loss in value



Wear and tear 1: Vehicle glazing: Windscreen - Stone chips - No deduction



Wear and tear 2: Bonnet: Bonnet - Stone chips - No deduction



Wear and tear 3: Rear bumper: Rear bumper - Scratch(es) - No deduction