

## Expertise

Protocol number: 45128162  
Order No. / Reference: 26121605-1  
Inspection date: 9 Apr 2026

Manufacturer: Ford

Model: Focus Turnier 1.5 EcoBlue Start-Stopp-System Aut.  
COOL&CONNECT

VIN: WF0PXXGCHPNS41695



### Vehicle details

#### Manufacturer / Type / Model / Equipment

Ford Focus Turnier 1.5 EcoBlue Start-Stopp-System Aut.  
COOL&CONNECT

<b>Vehicle Identification number</b>	WF0PXXGCHPNS41695
<b>Mileage (Read)</b>	85,355 km
<b>First registration</b>	2 Jun 2022
<b>Number of holders</b>	1

<b>Power / Engine displacement</b>	88 kw / 1,499 ccm
------------------------------------	-------------------

<b>Fuel type / Cylinder</b>	Diesel / 4
-----------------------------	------------

<b>Gearbox / Number of gears</b>	Automatic / 8
----------------------------------	---------------

<b>Type of drive</b>	Front drive
----------------------	-------------

<b>Type of vehicle</b>	Station wagon
------------------------	---------------

<b>Colour / colour code</b>	Magnetic-Grau
-----------------------------	---------------

<b>Doors / Seats</b>	5 / 5
----------------------	-------

<b>Upholstery type</b>	Cloth
------------------------	-------

<b>Colour of upholstery</b>	Anthracite-Grey
-----------------------------	-----------------

<b>Vehicle with smoke odor</b>	no
--------------------------------	----





## Equipment

### Standard equipment

- Airbag: Passenger airbag deactivation
- Exterior mirrors in body color, driver and passenger side, electrically adjustable and heated (with integrated turn signals)
- Tires: 6.5 J x 16 design wheels (4) with 205/60 R16 tires (in 5-spoke design, in black-silver)
- Roof rails, black
- Diesel particulate filter (DPF)
- Electronic Shifter
- Driver information system with on-board computer, color (10.7 cm screen diagonal)
- Electric front and rear windows (with all-around closing function)
- Luggage compartment cover
- Speed limiter (Intelligent speed limiter with speed limit display)
- Cruise control
- Transmission: 8-speed automatic transmission
- Illuminated glove compartment
- Back window, heater
- Rear window wiper
- Interior lighting with LED technology (front and rear and map reading lights at the front)
- Isofix mounting (including top tether anchor points on the outer seats of the 2nd row)
- Air conditioning, manual
- Headrests: 2 front and 3 rear, height adjustable
- LED headlights (LED low beam - LED high beam - LED daytime running lights incl. integrated LED turn signals at the front - LED cornering lights, static, incl. integrated LED fog light function and maneuvering light)
- Make-up mirrors in driver and passenger sun visors
- Front center console "Premium" (sliding armrest - cup holders - storage compartments - 12-volt and USB connection)
- Post-Collision Assist (In the event of a severe collision, which would also deploy the airbag and in which the driver might be incapacitated, this system initiates the braking process. This reduces the risk of colliding with further obstacles and road users after the initial collision. The driver can intervene and operate the accelerator or brake pedal manually throughout the entire process.)
- Tire repair kit (for use at a maximum speed of 80 km/h)
- Headlight assistant with day/night sensor
- Seats: Passenger seat height-adjustable, manually (with adjustable lumbar support)
- Seats: Map grid on the driver's and front passenger's seat backrests
- Seats: Front sports seats with enhanced lateral support
- 12-volt power outlet in the luggage compartment
- Lashing eyes in the luggage compartment
- Electronic immobilizer
- Anti-lock braking system (ABS) with electronic brake force distribution (EBD)
- Attachment points behind the second row of seats for mounting the safety partition net
- Hill start assist
- Fabric headliner
- Roof spoiler painted in car color
- Tachometer
- Electronic Stability Program (ESP) (with Emergency Brake Assist (EBA) and Traction Control System (TCS))
- Lane keeping assist including lane keeping assist
- Electronic parking brake
- FordPass Connect including eCall, live traffic information (only with navigation) and Wi-Fi hotspot (information about the current status or location of the vehicle as well as control of selected vehicle functions via smartphone with the FordPass app - eCall emergency call system to send an emergency call in the event of an accident or when manually activated - Real-time traffic information (only in conjunction with navigation system) - Wi-Fi hotspot (up to 4G/LTE7, for up to 10 mobile devices))
- Intelligent safety system (front airbag for driver and front passenger - front and rear head and shoulder airbags - side airbag for driver and front passenger - seat belt tensioners and force limiters in the front and on the outer seats of the 2nd row - 3-point seat belts on all seats, height-adjustable in the front - safety pedal assembly)
- Leather gear knob
- Steering wheel: 3-spoke design steering wheel (in Sensico leather look)
- Steering column, adjustable (adjustable in height and reach)
- MyKey key system (individually programmable second key)
- Front and rear parking pilot system
- Upholstery: Cloth
- Pre-Collision Assist (Forward Alert system with pedestrian and bicycle detection)
- Radio: Ford SYNC 3 Light with AppLink, 8" touchscreen and DAB/DAB+ (6 speakers - Android Auto and Apple CarPlay - Bluetooth hands-free system and audio streaming - steering wheel controls - voice control via phone - USB port)
- Tire Pressure Monitoring System (TPMS)
- Electro-mechanical speed-dependent power steering (EPAS - Electric Power Assisted Steering)
- Seats: Driver's seat height adjustable (with manually adjustable lumbar support)
- Seats: Rear seat backrest (foldable, 60:40 split)
- Start-stop system
- Carpet floor mats in the front



- Central locking with remote control and remote luggage compartment release
- Warning system for unfastened seat belts for the 1st and 2nd rows of seats

### Extra equipment

- Detachable towbar (including ESP trailer stabilization)
- Navigation: Ford SYNC 3 with AppLink, 8" touchscreen and DAB/DAB+ (Ford navigation system with AppLink, 8" touchscreen (20.3 cm screen diagonal) - 6 speakers - Android Auto and Apple CarPlay - Bluetooth hands-free system and audio streaming - Steering wheel controls - Radio player - USB port - Voice control via audio and telephone - Acoustic and visual route guidance, dynamic navigation with enhanced traffic information system, lane guidance and road map for Europe)
- Paint finish: Magnetic Metallic
- Safety partition net for luggage compartment
- Seats: Front seats can be heated individually and variably.
- Side windows from the 2nd row of seats and rear window, dark tinted.
- Package: Comfort (Air conditioning with automatic temperature control, separately adjustable for driver and front passenger side (2-zone automatic climate control) - Ford Key Free System (keyless locking/unlocking) including Ford Power Start function (keyless start) - Windscreen wipers with rain sensor, variable sensitivity adjustment - Interior mirror, automatically dimming - Exterior mirrors electrically folding and with ambient lighting)
- Seats: Ford ergonomic seat (driver and front passenger seat, 18-way adjustable: - position, height and tilt of the backrest and seat cushion manually adjustable (in conjunction with EcoBoost Hybrid - front passenger seat, 2-way adjustable) - thigh support, manually extendable - lumbar support, 4-way electrically adjustable - headrest, 4-way adjustable)

## Brief expert findings

Documents submitted	At the time of the inspection, the vehicle registration certificate Part 2 (title) was available, but the vehicle registration certificate Part 1 (document) was not. (Copy)
VIN comparison	The vehicle identification number (VIN) was read from the vehicle and its conformity with the submitted documents was confirmed by the undersigned during the inspection.
Inspection	The inspection conditions were sufficient for the assessment of the vehicle. Lifting equipment and/or a pit were available for examining the vehicle.
Test drive	No test drive/shunting maneuver was carried out during the inspection of the vehicle.
Engine function test	An engine test run was performed.

## Value reducing factors

No.	Component group	Description
1	Equipment	Tirefit filler - Expired - Replace
2	Door - front left side	Door - Scratch(es) - Smart repair
3	Side panel - rear right side	Sill - Scratch(es) - Smart repair
4	Front bumper	Front bumper - Scratched - Repair and paint
5	Door - rear right side	Door - Scratch(es) - Paint
6	Door - front right side	Door - Scratch(es) - Paint

## Wear and tear

No.	Component group	Description
1	Vehicle glazing	Windscreen - Stone chips - No deduction
2	Rear bumper	Rear bumper (Ladekante) - Scratch(es) - No deduction

The vehicle shows signs of wear and tear commensurate with its age and use.



## Order/Scope of Order

An order was placed to prepare a sales report for the described vehicle. This report includes the following:

- Description of key vehicle information
- Documentation of equipment features  
*(Delivery by third-party service providers)*
- Documentation of damage, defects, missing parts
- Documentation of prior damage, unrepaired prior damage, repainting
- A brief visual or functional inspection of the equipment details, if possible.  
*(Functional testing of driver assistance systems is not included in the scope of services!)*
- a photographic documentation of the vehicle

## Basis for the order

This product is based on the guidelines for vehicle returns and valuations published by Alphabet Fleet GmbH. The expert makes the specific findings in each individual case objectively, within the framework of the prescribed standards, based on their own expertise.

The vehicle inspection takes place in a fully assembled, unassembled state.

Damage or defects that can only be detected during disassembly/diagnostic work or through further investigation remain within the realm of prognostic risk. An increased risk exists due to concealed defects caused by fraudulent misrepresentation and which were not identifiable by the expert.

Damage or defects resulting from normal use or wear and tear of the vehicle will be accepted in accordance with the applicable standard.

There was no explicit identification or monetary consideration of the expected features within the product.

Features which, in their nature and extent, slightly exceed normal use but do not constitute unacceptable damage, will be documented and indicated as signs of wear, if applicable.

Damage or defects that, according to the applicable standard, can no longer be attributed to normal use or wear and tear are listed under "Value Reducing Factors" in the product description.

Depending on the product specification, a monetary ID can be provided. If this takes place, the costs can be 100% d or pro rata depending on the vehicle's age and mileage.

## Previous damages

No apparent prior damage that had been repaired could be found on the vehicle.



Figure 1: Diagonal front (left)



Figure 2: Diagonal front (right)



Figure 3: Diagonal rear (left)



Figure 4: Diagonal rear (right)



Figure 5: Interior - front



Figure 6: Interior - rear



Figure 7: Instrument cluster



Figure 8: Instrument panel

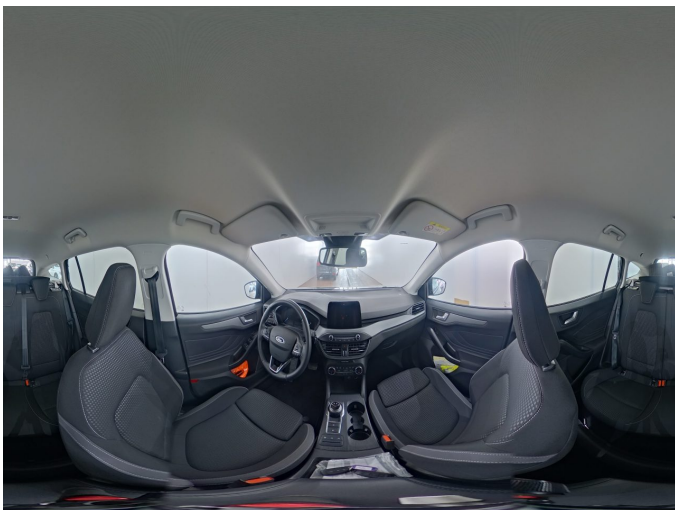


Figure 9: Interior 360° view



Figure 10: Cargo area

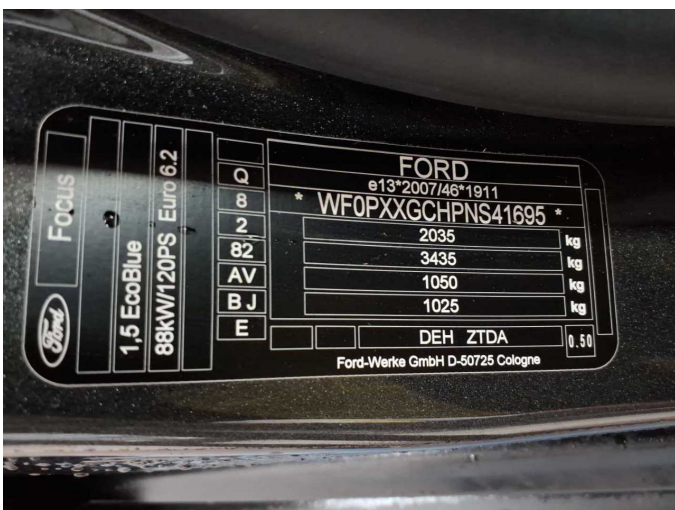


Figure 11: VIN



Figure 12: Mounted tyres



Figure 13: Documents

Servicebetriebs	Auftragsdaten	Kilometerzähler	Beschreibung
Autohaus Hirsch GmbH Mühweg 11 Schwäbisch Hall 74523 GERMANY 0791141024 service@autohaus-hirsch.de ford-hirsch-schwaebisch-hall.de	Auftragsdatum: 31.10.2024 Auftragsnummer: 31102024	Ablesewert: 58559 KM	Planmäßige Wartung abgeschlossen 4 Jahr (50000 km) Ergebnis der Karosserie-/Lackinspektion Nicht durchgeführt Zusätzliche Wartungsarbeiten Keine ausstehenden Service-Aktionen Austausch des Pollen-/Geruchsfilters Öl- und Ölfilterwechsel Kraftstofffilterwechsel Bremsflüssigkeitswechsel Austausch des Luftfilters
Autohaus Hirsch GmbH Mühweg 11 Schwäbisch Hall 74523 GERMANY 0791141024 service@autohaus-hirsch.de hirsch-schwaebisch-hall.de	Auftragsdatum: 24.08.2023 Auftragsnummer: 24082023	Ablesewert: 29253 KM	Planmäßige Wartung abgeschlossen 2 Jahr (30000 km) Ergebnis der Karosserie-/Lackinspektion 1 - Erfolgreich Zusätzliche Wartungsarbeiten Keine ausstehenden Service-Aktionen Austausch des Pollen-/Geruchsfilters Öl- und Ölfilterwechsel

Figure 14: Documents



Figure 15: Documents



Figure 16: Additional tyres



Figure 17: Navigation



Figure 18: Misc.

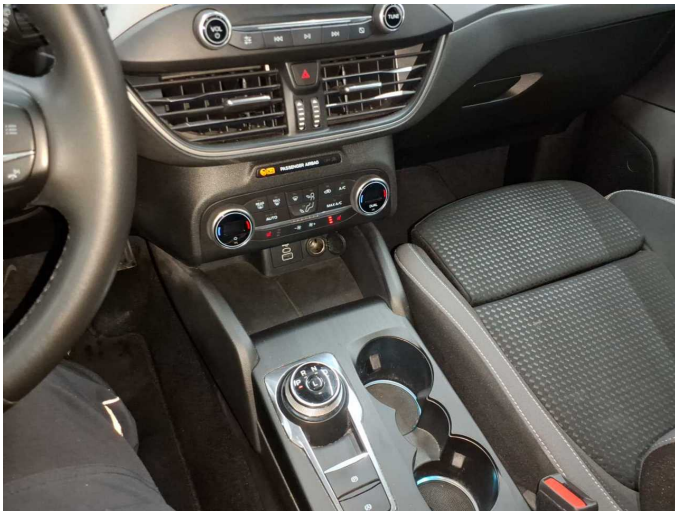


Figure 19: Misc.



Figure 20: Misc.



Figure 21: Misc.



Figure 22: Misc.



Figure 23: Misc.



Figure 24: Misc.



Figure 25: Misc.



Figure 26: Misc.

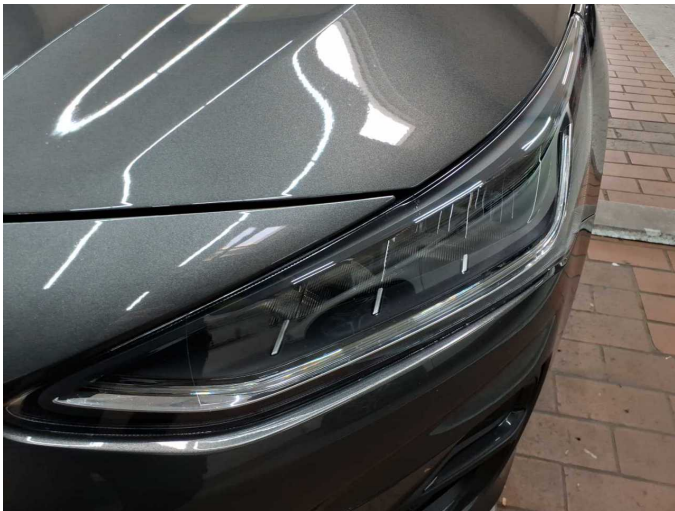


Figure 27: Misc.



Figure 28: Misc.



Figure 29: Misc.



Figure 30: Misc.

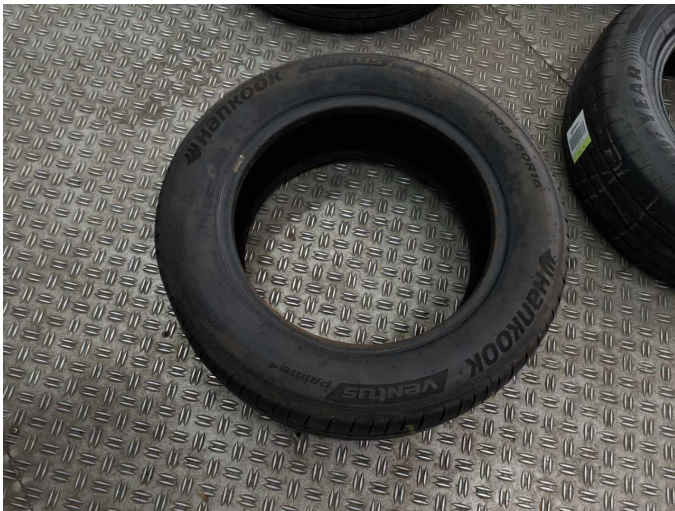


Figure 31: Misc.



Figure 32: Misc.

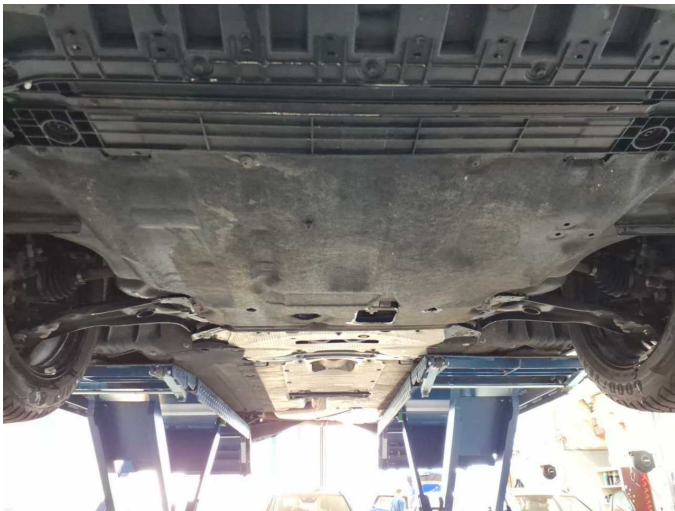
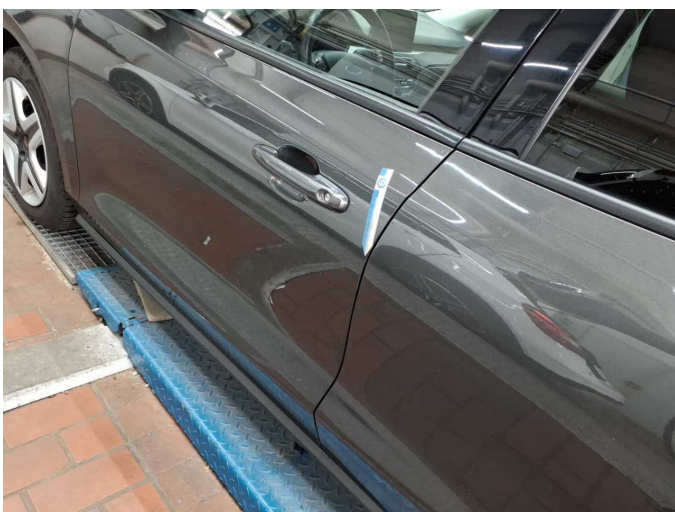


Figure 33: Misc.



Damage 1: Equipment: Tirefit filler - Expired - Replace



Damage 2: Door - front left side: Door - Scratch(es) - Smart repair



Damage 2: Door - front left side: Door - Scratch(es) - Smart repair



**Damage 3:** Side panel - rear right side: Sill - Scratch(es) - Smart repair



**Damage 3:** Side panel - rear right side: Sill - Scratch(es) - Smart repair



**Damage 4:** Front bumper: Front bumper - Scratched - Repair and paint



**Damage 4:** Front bumper: Front bumper - Scratched - Repair and paint



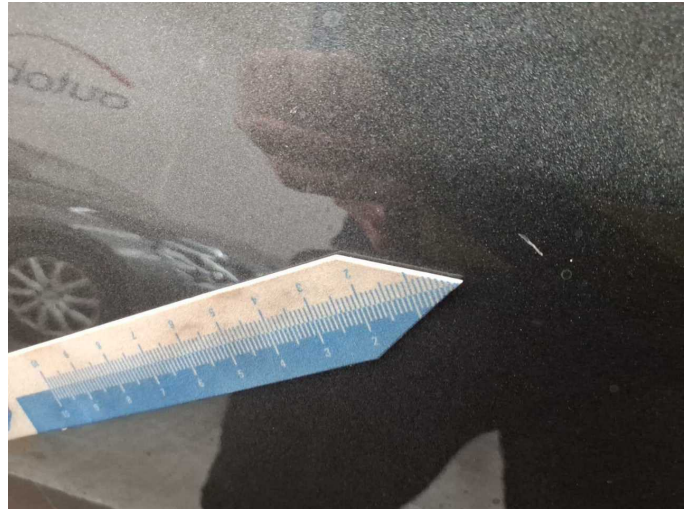
**Damage 4:** Front bumper: Front bumper - Scratched - Repair and paint



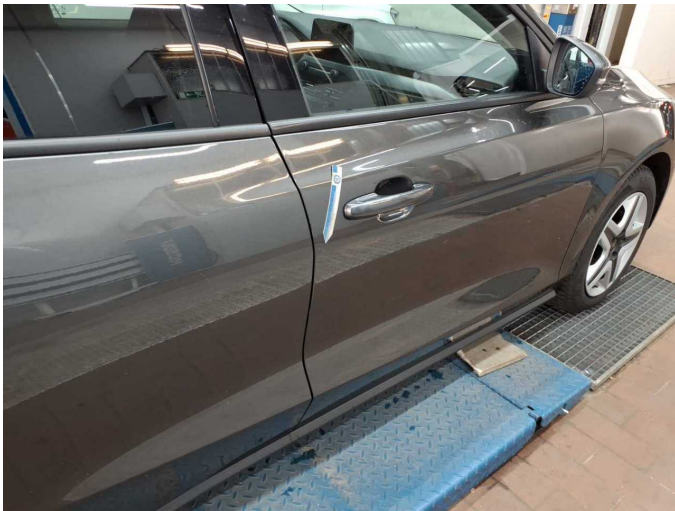
**Damage 4:** Front bumper: Front bumper - Scratched - Repair and paint



**Damage 5:** Door - rear right side: Door - Scratch(es) - Paint



**Damage 5:** Door - rear right side: Door - Scratch(es) - Paint



**Damage 6:** Door - front right side: Door - Scratch(es) - Paint



**Damage 6:** Door - front right side: Door - Scratch(es) - Paint



**Damage 6:** Door - front right side: Door - Scratch(es) - Paint



**Damage 6:** Door - front right side: Door - Scratch(es) - Paint