

Expertise

Protocol number: 46031233
Order No. / Reference: 26482468
Inspection date: 17 Jun 2026

Manufacturer: Opel

Model: Movano 2.2 BlueHDi 140 L2H2 VA

VIN: VXEYCF6F5SG027388



Vehicle details

Manufacturer / Type / Model / Equipment

Opel Movano 2.2 BlueHDi 140 L2H2 VA

Vehicle Identification number VXEYCF6F5SG027388

Mileage (Read) 25,087 km

First registration 10 Jun 2025

Number of holders 1

Power / Engine displacement 103 kw / 2,184 ccm

Fuel type / Cylinder Diesel / 4

Gearbox / Number of gears Manual / 6

Type of drive Front drive

Type of vehicle Van

Colour / colour code TYPE HABILLAGE
EXTERIEUR PLATE
STANDARD

Doors / Seats 4 / 3

Upholstery type Cloth

Colour of upholstery Black



Equipment

Standard equipment

- Storage compartments: Cup holders (lower center console) and central storage compartment in the dashboard
- Exterior mirrors, electrically adjustable and heated
- Reinforced battery (95 Ah)
- On-board computer
- Tachometer
- Electronic Stability Control (ESP) (Crosswind Assist - Trailer Stability Control - Post Collision Braking - Rollover Prevention - Traction Control (ASR) - Hydraulic Brake Assist (HBA) - Hill Start Assist - Adaptive Load Control (LAC) (Adaptation of ABS, ASR and ESP functions to vehicle load))
- Air conditioning
- Headrests (3)
- Radiator grille surround in body color
- 180A alternator
- Upholstery: Cloth
- Radio: DAB antenna on the roof
- Tires: Tire repair kit
- Indirect tire pressure monitoring system (TPMS)
- Electric power steering
- Safety kit (Emergency Brake Assist (Pedestrian and Cyclist Detection) - Lane Keeping Assist - Traffic Sign Recognition - Driver Fatigue Warning - Intelligent Speed Assist - Event Data Recorder (EDR) / Black Box)
- Doors: Rear doors with a 180° opening angle
- Doors: Sliding door on the right, sheet metal cladding
- Warning tone and light for unfastened seat belts, front
- Immobiliser
- Passenger side airbag
- Driver's side airbag
- Anti-lock braking system (ABS)
- Exterior mirrors: Short mirror arm - for vehicle widths up to 2.20 m
- third brake light
- Rear parking aid (acoustic)
- Electric front windows
- Pedestrian warning (acoustic) at the rear
- Speed controller and limiter
- Transmission: 6-speed transmission
- Hooks for securing goods in the cargo area
- Halogen headlights with halogen daytime running lights (DRL)
- Fuel tank 90 l (Adblue tank 19 liters)
- Paint finish: Solid color paint
- Particulate filter: Diesel particulate filter with SCR (AdBlue)
- Radio: Audio system DAB (5" color display, digital radio; Bluetooth hands-free system, steering wheel controls, BTA (telematics box module), USB)
- Wheels: Steel wheels 6J x 15 (tires 215/70 R15C 109/107S)
- Seats: Driver's seat with armrest and lumbar support, double passenger seat (double passenger seat with folding function in the middle backrest)
- Partition wall clad in sheet metal
- Doors: Rear doors, sheet metal
- Door interior trim with storage compartments including 1.5-liter bottle holder and speaker housing
- Central locking with remote control + 1 mechanical key

Extra equipment

- Package: Winter (programmable Webasto auxiliary heater - heated driver's seat - heated windshield - preheating device for oil vapor recirculation - keyless entry and start (Keylessentry & go) - electric parking brake - central glove compartment (lockable))
- Package: "CITY PLUS VISIBILITY"
- Package: Spare wheel (spare wheel - winch - jack)
- Upholstery: Fabric (Crepe Black fabric - backrest pattern - double silver side seams)

Brief expert findings

Documents submitted	At the time of the inspection, the vehicle registration certificate Part 2 (title) was available, but the vehicle registration certificate Part 1 (document) was not. (Copy)
VIN comparison	The vehicle identification number (VIN) was read from the vehicle and its conformity with the submitted documents was confirmed by the undersigned during the inspection.
Inspection	The inspection conditions were sufficient for the assessment of the vehicle. Lifting equipment and/or a pit were available for examining the vehicle.
Test drive	No test drive/shunting maneuver was carried out during the inspection of the vehicle.
Engine function test	An engine test run was performed.



Value reducing factors

No.	Component group	Description
1	Side panel - rear right side	Side panel - dent(s) - Smooth repair work
2	Sill - left side	Sill - Scratch(es) - Smart repair
3	Engine	Engine - Specify findings - Perform diagnosis
4	Boot lid / rear door	Rear door - left side - Scratch(es) - Paint
5	Boot lid / rear door	Rear door - right side - Scratch(es) - Paint

Wear and tear

No.	Component group	Description
1	Front bumper	Front bumper (unpainted) - Scratch(es) - No deduction
2	Headlight	Headlight - right side - Scratch(es) - No deduction
3	Bonnet	Bonnet - Stone chips - No deduction
4	Door - rear right side	Brightware - lower - Scratch(es) - No deduction

The vehicle shows signs of wear and tear commensurate with its age and use.

Order/Scope of Order

An order was placed to prepare a sales report for the described vehicle. This report includes the following:

- Description of key vehicle information
- Documentation of equipment features
(*Delivery by third-party service providers*)
- Documentation of damage, defects, missing parts
- Documentation of prior damage, unrepaired prior damage, repainting
- A brief visual or functional inspection of the equipment details, if possible.
(*Functional testing of driver assistance systems is not included in the scope of services!*)
- a photographic documentation of the vehicle

Basis for the order

This product is based on the guidelines for vehicle returns and valuations of light commercial vehicles published by Alphabet Fleet Management GmbH. The expert makes the specific findings in each individual case objectively, within the framework of the prescribed standards, based on their own expertise.

The vehicle inspection takes place in a fully assembled, unassembled state.

Damage or defects that can only be detected during disassembly/diagnostic work or through further investigation remain within the realm of prognostic risk. An increased risk exists due to concealed defects caused by fraudulent misrepresentation and which were not identifiable by the expert.

Damage or defects resulting from normal use or wear and tear of the vehicle will be accepted in accordance with the applicable standard.

There was no explicit identification or monetary consideration of the expected features within the product.

Features which, in their nature and extent, slightly exceed normal use but do not constitute unacceptable damage, will be documented and indicated as signs of wear, if applicable.

Damage or defects that, according to the applicable standard, can no longer be attributed to normal use or wear and tear are listed under "Value Reducing Factors" in the product description.

Depending on the product specification, a monetary ID can be provided. If this takes place, the costs can be 100% d or pro rata depending on the vehicle's age and mileage.

Previous damages

No apparent prior damage that had been repaired could be found on the vehicle.



Comments

Der Winterradsatz gehört nicht zur Ausstattung



Figure 1: Diagonal front (left)



Figure 2: Diagonal front (right)



Figure 3: Diagonal rear (left)



Figure 4: Diagonal rear (right)

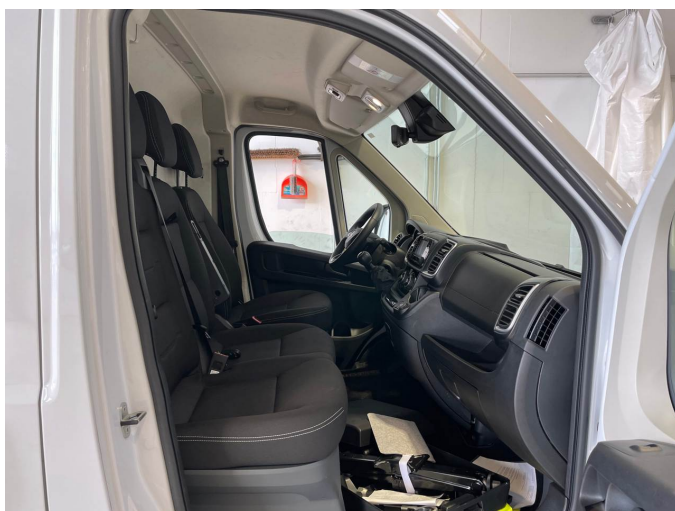


Figure 5: Interior - front



Figure 6: Interior - rear



Figure 7: Instrument cluster



Figure 8: Instrument panel



Figure 9: Interior 360° view

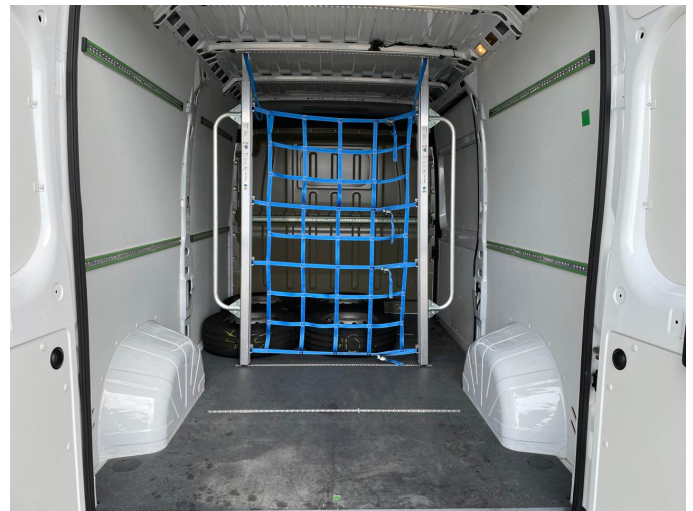


Figure 10: Cargo area



Figure 11: VIN



Figure 12: Mounted tyres

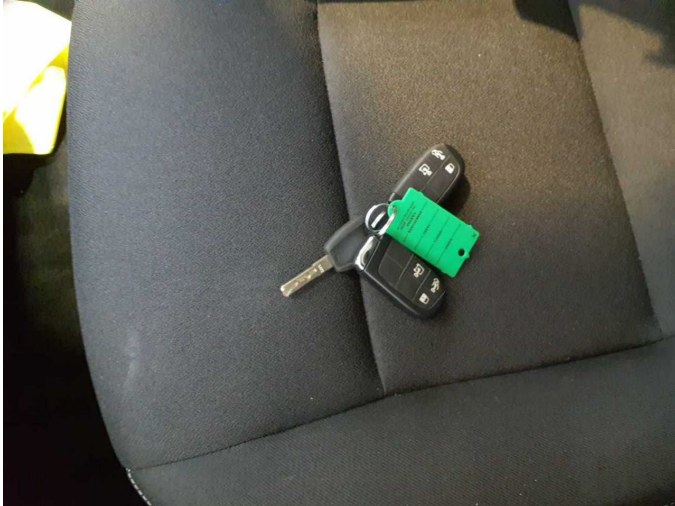


Figure 13: Documents



Figure 14: Documents



Figure 15: Additional tyres



Figure 16: Additional tyres



Figure 17: Misc.

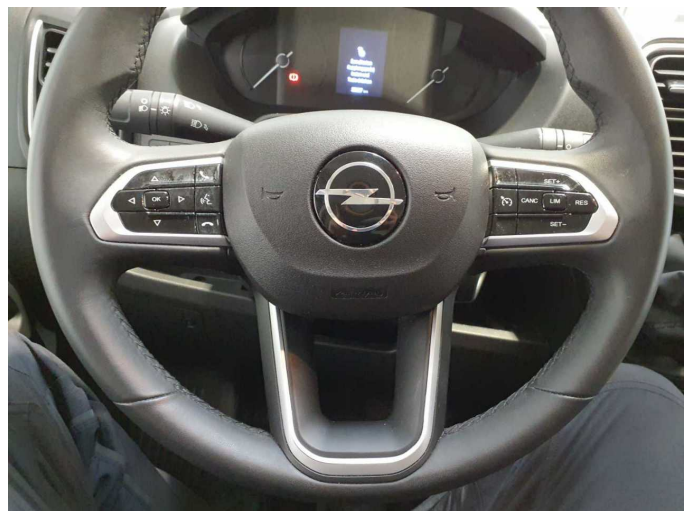


Figure 18: Misc.

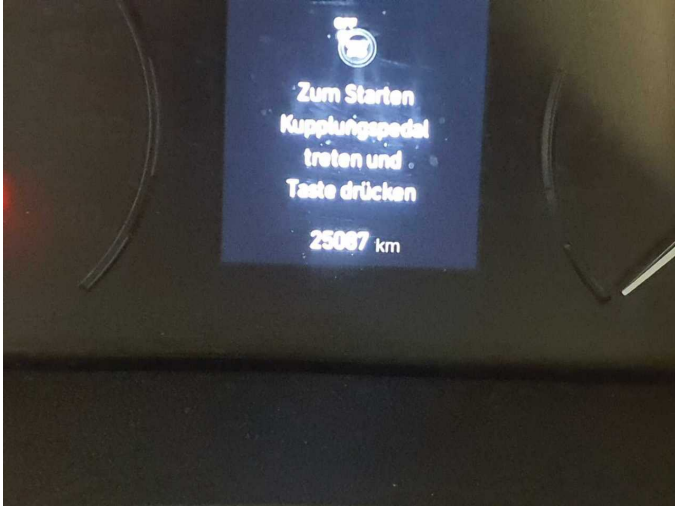


Figure 19: Misc.



Figure 20: Misc.



Figure 21: Misc.



Figure 22: Misc.



Figure 23: Misc.



Figure 24: Misc.



Figure 25: Misc.



Figure 26: Misc.

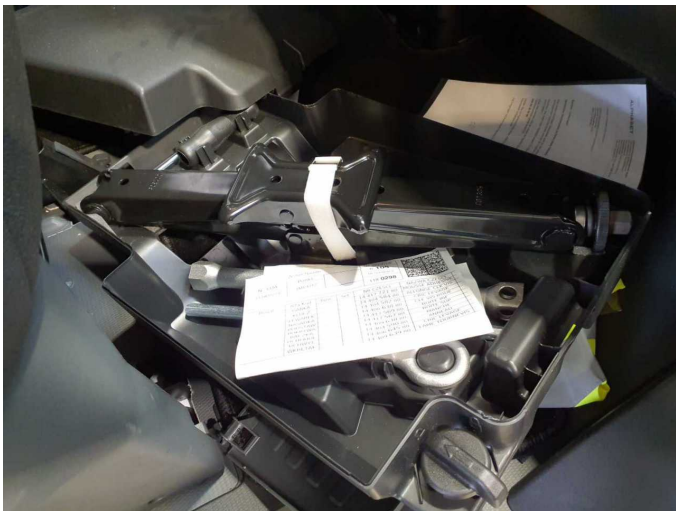


Figure 27: Misc.



Figure 28: Misc.



Figure 29: Misc.



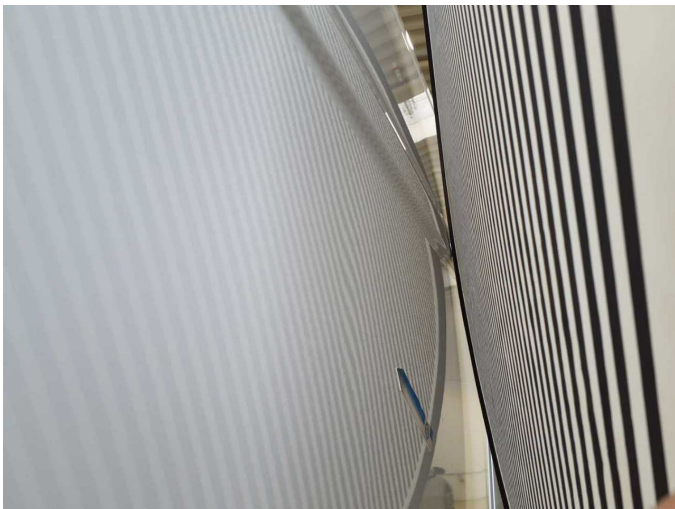
Figure 30: Misc.



Figure 31: Misc.



Damage 1: Side panel - rear right side: Side panel - dent(s) - Smooth repair work



Damage 1: Side panel - rear right side: Side panel - dent(s) - Smooth repair work



Damage 2: Sill - left side: Sill - Scratch(es) - Smart repair



Damage 2: Sill - left side: Sill - Scratch(es) - Smart repair



Damage 3: Engine: Engine - Specify findings - Perform diagnosis



Damage 4: Boot lid / rear door: Rear door - left side - Scratch(es) - Paint



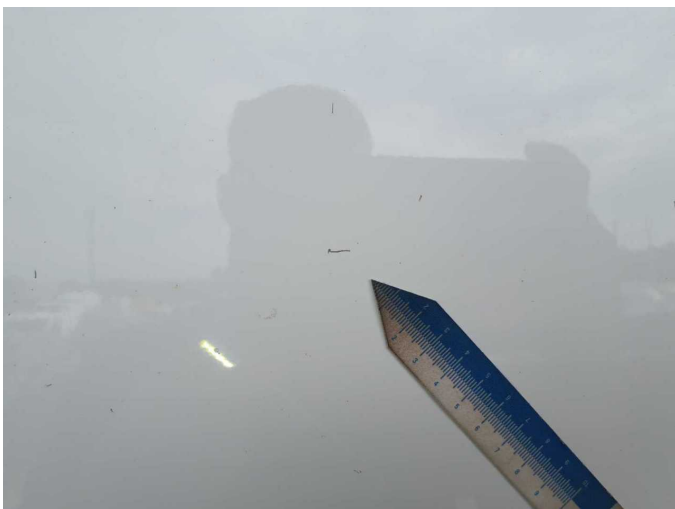
Damage 4: Boot lid / rear door: Rear door - left side - Scratch(es) - Paint



Damage 4: Boot lid / rear door: Rear door - left side - Scratch(es) - Paint



Damage 5: Boot lid / rear door: Rear door - right side - Scratch(es) - Paint



Damage 5: Boot lid / rear door: Rear door - right side - Scratch(es) - Paint



Damage 5: Boot lid / rear door: Rear door - right side - Scratch(es) - Paint



Damage 5: Boot lid / rear door: Rear door - right side - Scratch(es) - Paint