

Expertise

Protocol number: 46208795
Order No. / Reference: 26570965
Inspection date: 29 Jun 2026

Manufacturer: Ford

Model: S-Max 2.0 EcoBlue Aut. TREND

VIN: WF0JXXWPCJNM08154



Vehicle details

Manufacturer / Type / Model / Equipment

Ford S-Max 2.0 EcoBlue Aut. TREND

Vehicle Identification number WF0JXXWPCJNM08154

Mileage (Read) 224,866 km

First registration 12 Oct 2022

Number of holders 1

Next periodical technical inspection 10/2027
(Report on hand)

Power / Engine displacement 110 kw / 1,995 ccm

Fuel type / Cylinder Diesel / 4

Gearbox / Number of gears Automatic / 8

Type of drive Front drive

Type of vehicle Station wagon

Colour / colour code Obsidian-Schwarz Metallic

Doors / Seats 5 / 5

Upholstery type Cloth

Colour of upholstery Anthracite-Grey

Vehicle with smoke odor no



Equipment

Standard equipment

- Storage compartments
- Exterior mirrors in body color, driver and passenger side, electrically adjustable and heated
- Hill start assist
- third brake light
- Diesel particulate filter (DPF)
- Electronic Shifter
- Electric windows front and rear
- Electronic parking brake
- Ford EasyFold: 2nd row seat backrests fold down electrically at the touch of a button.
- Luggage compartment lighting
- Transmission: 8-speed automatic transmission
- rear window wiper
- Interior mirror, automatically dimming
- Isofix bracket
- Air conditioning with automatic temperature control
- Steering wheel: Steering column, adjustable in height and reach
- Front center console with padded armrest
- Fog light
- Front and rear parking pilot system
- Radio features: Ford SYNC 3 with AppLink, touchscreen, DAB/DAB+ and FordPass Connect
- LED taillights
- Headlight dipped beam with switch-off delay including "greeting function"
- Seats: Driver and passenger seats, 4-way manually adjustable
- Start-stop system
- Bumpers painted in body color
- Daytime running light
- Traffic sign recognition system
- Warning system for unfastened seat belts for the 1st and 2nd rows of seats

Extra equipment

- Detachable towbar (including ESP trailer stabilization)
- Package: Business I (Ford navigation system incl. Ford SYNC 3, AppLink, 20.3 cm touchscreen, DAB/DAB+, voice control, support for Android Auto and Apple CarPlay, Bluetooth hands-free system and audio streaming, FordPass Connect, eCall emergency call system, live traffic information, Wi-Fi hotspot, radio/CD player, 2 USB ports, 8 speakers, steering wheel controls, LED daytime running lights, park assist with automatic parallel and perpendicular parking function, pre-collision assist, forward collision warning, active emergency braking, reversing camera)

- Anti-lock braking system (ABS)
- Attachment points for safety partition grilles
- Tires: 7.5 J x 17 alloy wheels (4) with 235/55 R 17 tires (in 10-spoke design)
- roof console
- Tachometer
- Driver information system display 10.7cm color
- High Beam Assist
- Ford Easy Fuel
- Ford Power Start function
- luggage compartment cover
- Cruise control system with intelligent speed limiter
- Back window, heater
- Interior lighting with delay circuit
- Intelligent security system
- Electric child safety lock
- Paint finish: Solid
- Steering wheel: Multifunction leather steering wheel
- Reading lights front and rear
- MyKey key system (individually programmable second key)
- Emergency brake light
- Upholstery: Cloth
- Tire repair kit
- Tire Pressure Monitoring System (TMPS)
- Windscreen wipers with rain sensor
- Headlight assistant with day/night sensor
- Electromechanical power steering
- Seats: Flexible seating system "FoldFlatSystem (FFS)"
- Seats: Front sports seats
- Power outlet: 12-volt connection in the luggage compartment and in the center console
- Premium carpet floor mats, front and rear
- Lashing eyes in the luggage compartment
- Immobiliser
- Central locking with remote control

- Paint finish: Metallic
- Package: Winter (Heated windscreen - Heated leather steering wheel - Individually and variably heated front seats)
- Side windows from the 2nd row of seats and rear window, dark tinted.
- Safety partition net behind the 2nd row of seats
- Seats: Ford ergonomic seat (driver's seat 18-way adjustable: - length, height and tilt of the seat - extendable thigh support - adjustable backrest - lumbar support 4-way electrically adjustable - passenger seat, 4-way manually adjustable, incl. manually adjustable lumbar support)



Brief expert findings

Documents submitted	At the time of the inspection, the vehicle registration certificate Part 2 (title) was available, but the vehicle registration certificate Part 1 (document) was not. (Copy)
VIN comparison	The vehicle identification number (VIN) was read from the vehicle and its conformity with the submitted documents was confirmed by the undersigned during the inspection.
Inspection	The inspection conditions were sufficient for the assessment of the vehicle. Lifting equipment and/or a pit were available for examining the vehicle.
Test drive	No test drive/shunting maneuver was carried out during the inspection of the vehicle.
Engine function test	An engine test run was performed.

Value reducing factors

No.	Component group	Description
1	Boot lid / rear door	Boot lid - Glued / labelled - De-glue / neutralise
2	Steering system	Steering wheel - Abrasion - Loss in value
3	Door - front left side	Door - dent(s) - Smart repair
4	Boot lid / rear door	Boot lid - dent(s) - Loss in value
5	Roof	Roof rail - left side - dent(s) - Smart repair
6	Mudguard - left side	Mudguard - left side - Scratch(es) - Smart repair
7	Misc.	Inspection / maintenance - Due - Perform
8	Bonnet	Bonnet - Stone chips - Paint

Wear and tear

No.	Component group	Description
1	Vehicle glazing	Windscreen - Stone chips - No deduction
2	Body	Body - Scratch(es) - No deduction
3	Interior	Interior - Scratch(es) - No deduction
4	Mudguard - right side	Mudguard - right side (Und links) - Stone chips - No deduction
5	Side panel - rear right side	Sill - dent(s) - No deduction
6	Rear bumper	Rear bumper - Scratch(es) - No deduction
7	Door - rear left side	Door - dent(s) - No deduction
8	Front bumper	Spoiler - Scratch(es) - No deduction
9	Body	Underbody - Corrosion - No deduction

The vehicle shows signs of wear and tear commensurate with its age and use.

Missing parts

Description

2nd wheel set - 2nd wheel set (Mitteldeckel)



Order/Scope of Order

An order was placed to prepare a sales report for the described vehicle. This report includes the following:

- Description of key vehicle information
- Documentation of equipment features
(Delivery by third-party service providers)
- Documentation of damage, defects, missing parts
- Documentation of prior damage, unrepaired prior damage, repainting
- A brief visual or functional inspection of the equipment details, if possible.
(Functional testing of driver assistance systems is not included in the scope of services!)
- a photographic documentation of the vehicle

Basis for the order

This product is based on the guidelines for vehicle returns and valuations published by Alphabet Fleet GmbH. The expert makes the specific findings in each individual case objectively, within the framework of the prescribed standards, based on their own expertise.

The vehicle inspection takes place in a fully assembled, unassembled state.

Damage or defects that can only be detected during disassembly/diagnostic work or through further investigation remain within the realm of prognostic risk. An increased risk exists due to concealed defects caused by fraudulent misrepresentation and which were not identifiable by the expert.

Damage or defects resulting from normal use or wear and tear of the vehicle will be accepted in accordance with the applicable standard.

There was no explicit identification or monetary consideration of the expected features within the product.

Features which, in their nature and extent, slightly exceed normal use but do not constitute unacceptable damage, will be documented and indicated as signs of wear, if applicable.

Damage or defects that, according to the applicable standard, can no longer be attributed to normal use or wear and tear are listed under "Value Reducing Factors" in the product description.

Depending on the product specification, a monetary ID can be provided. If this takes place, the costs can be 100% or pro rata depending on the vehicle's age and mileage.

Previous damages

No apparent prior damage that had been repaired could be found on the vehicle.

Comments

Das Fahrzeug weist der Laufzeit entsprechende Gebrauchsspuren auf.

Der montierte Winterradsatz ist nicht Bestandteil der Ausstattung.



Figure 1: Diagonal front (left)



Figure 2: Diagonal front (right)



Figure 3: Diagonal rear (left)



Figure 4: Diagonal rear (right)

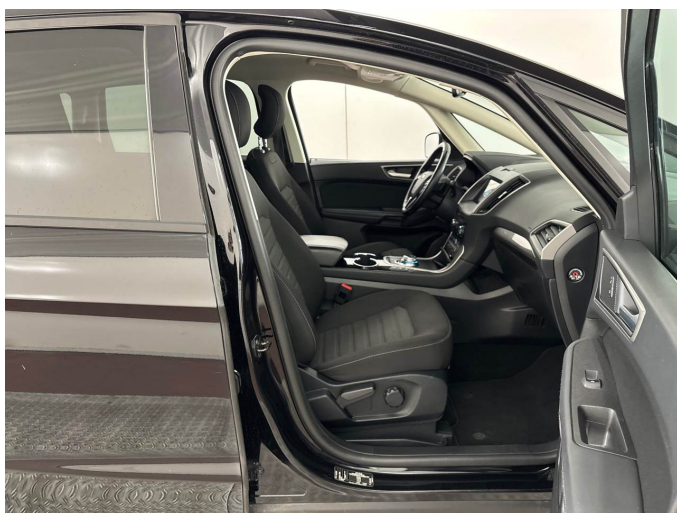


Figure 5: Interior - front



Figure 6: Interior - rear



Figure 7: Instrument cluster



Figure 8: Instrument panel



Figure 9: Interior 360° view



Figure 10: Cargo area



Figure 11: VIN



Figure 12: Mounted tyres

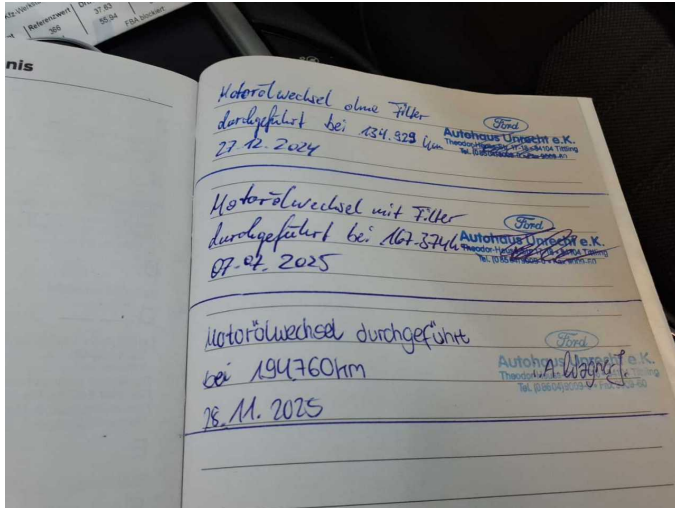


Figure 13: Documents

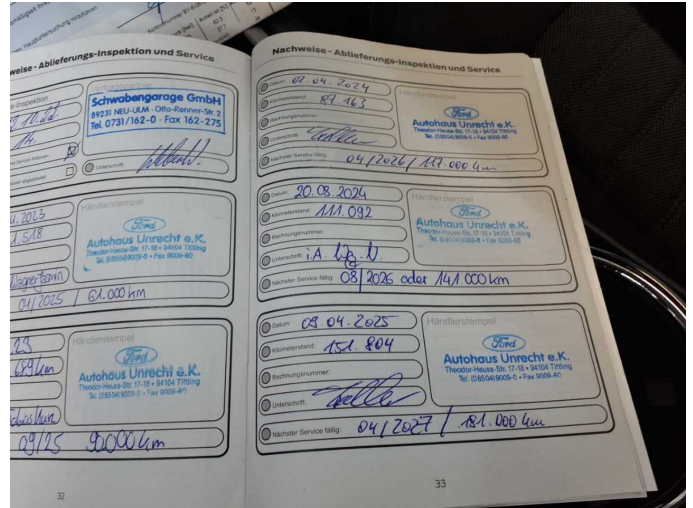


Figure 14: Documents

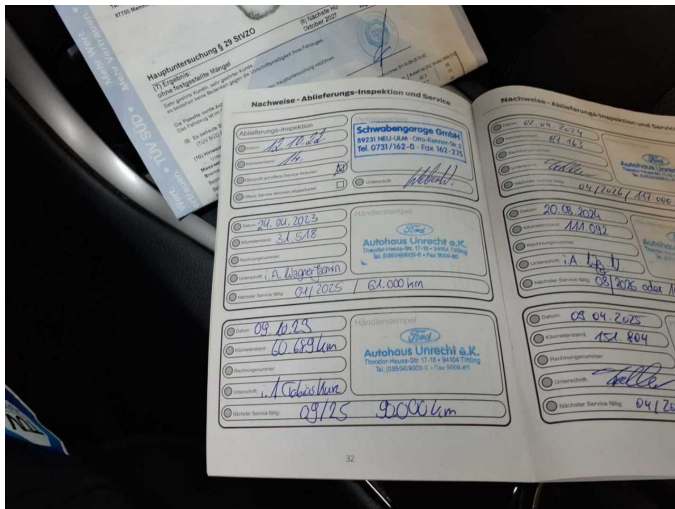


Figure 15: Documents



Figure 16: Documents

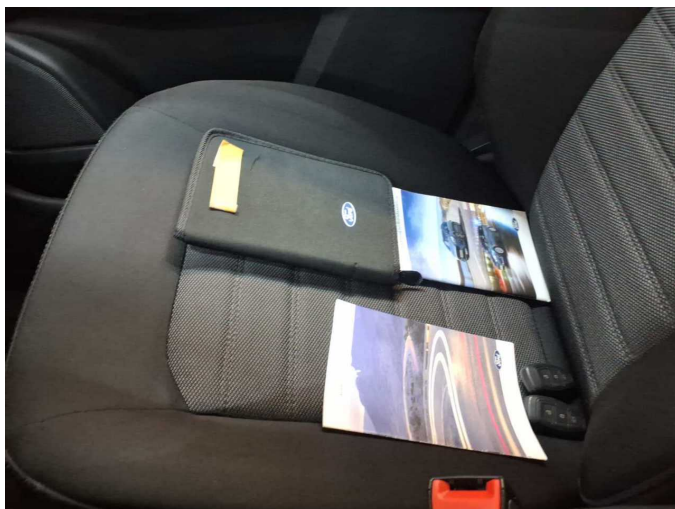


Figure 17: Documents



Figure 18: Additional tyres

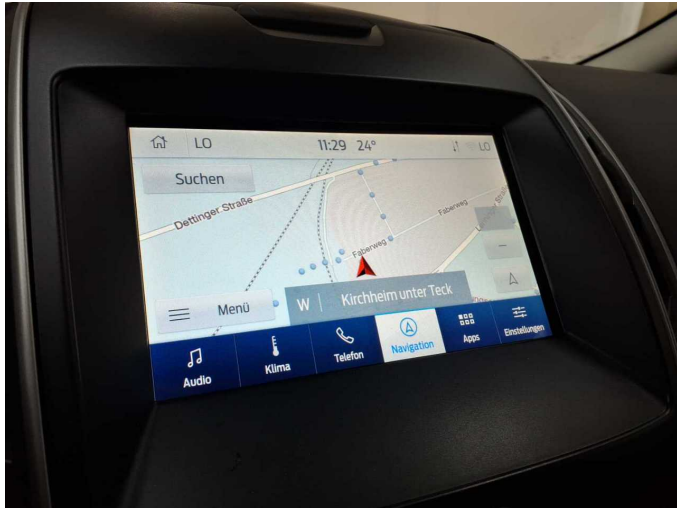


Figure 19: Navigation



Figure 20: Misc.



Figure 21: Misc.



Figure 22: Misc.



Figure 23: Misc.



Figure 24: Misc.



Figure 25: Misc.



Figure 26: Misc.



Figure 27: Misc.



Figure 28: Misc.

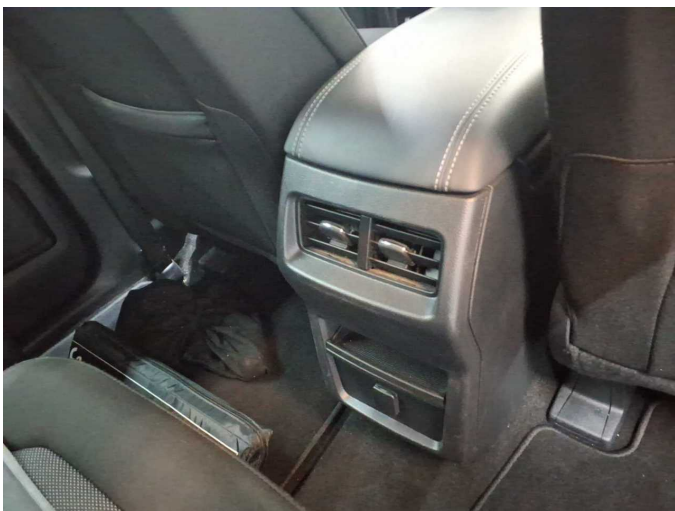


Figure 29: Misc.



Figure 30: Misc.



Figure 31: Misc.



Figure 32: Misc.

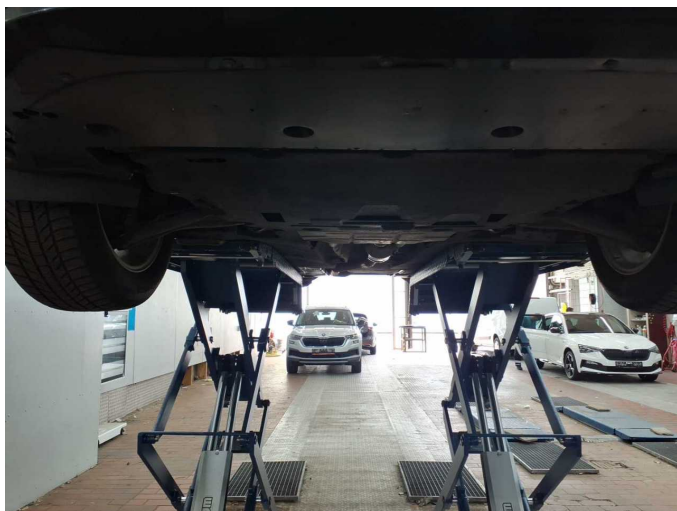
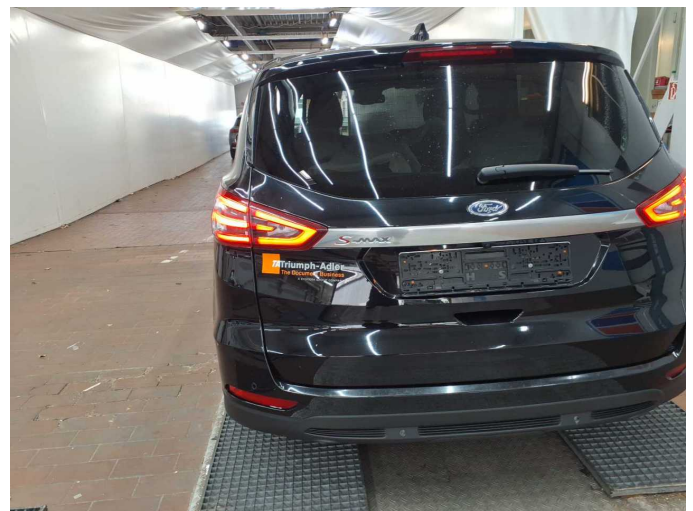


Figure 33: Misc.



Damage 1: Boot lid / rear door: Boot lid - Glued / labelled - De-glug / neutralise



Damage 1: Boot lid / rear door: Boot lid - Glued / labelled - De-glug / neutralise



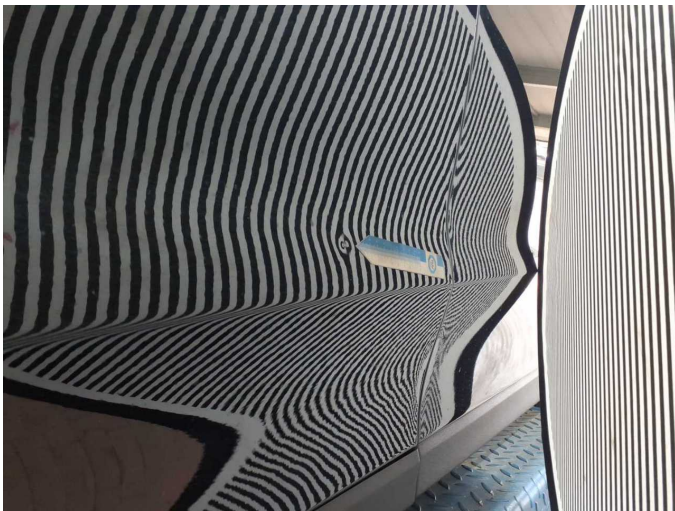
Damage 2: Steering system: Steering wheel - Abrasion - Loss in value



Damage 2: Steering system: Steering wheel - Abrasion - Loss in value



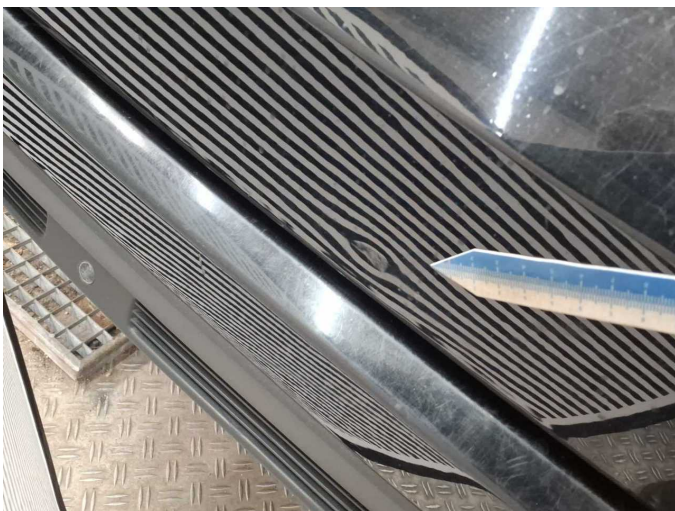
Damage 3: Door - front left side: Door - dent(s) - Smart repair



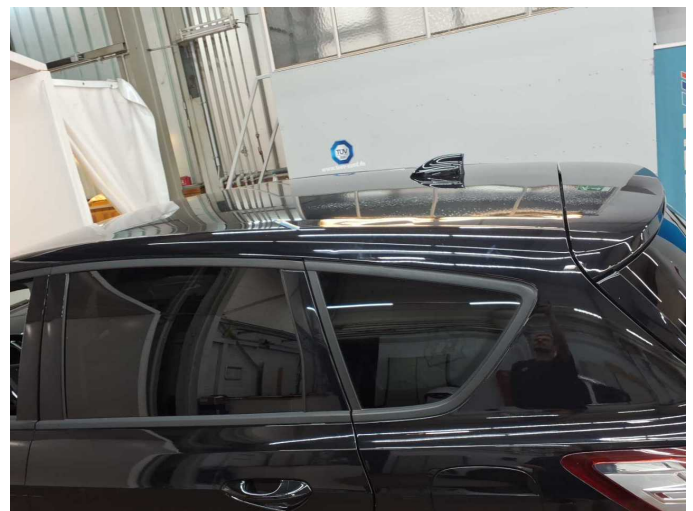
Damage 3: Door - front left side: Door - dent(s) - Smart repair



Damage 4: Boot lid / rear door: Boot lid - dent(s) - Loss in value



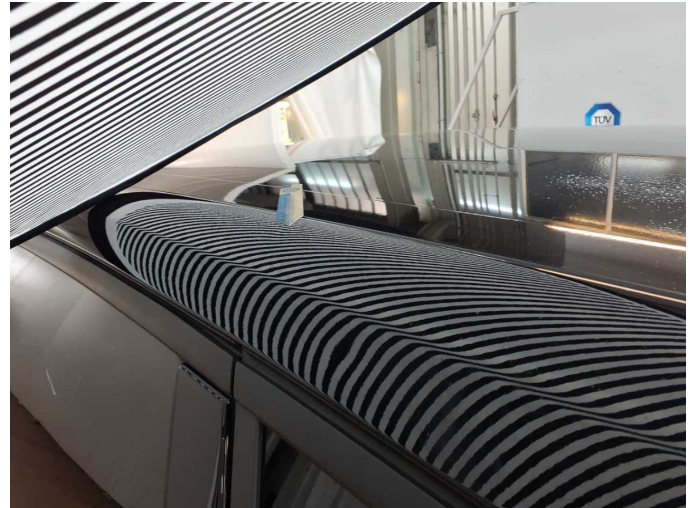
Damage 4: Boot lid / rear door: Boot lid - dent(s) - Loss in value



Damage 5: Roof: Roof rail - left side - dent(s) - Smart repair



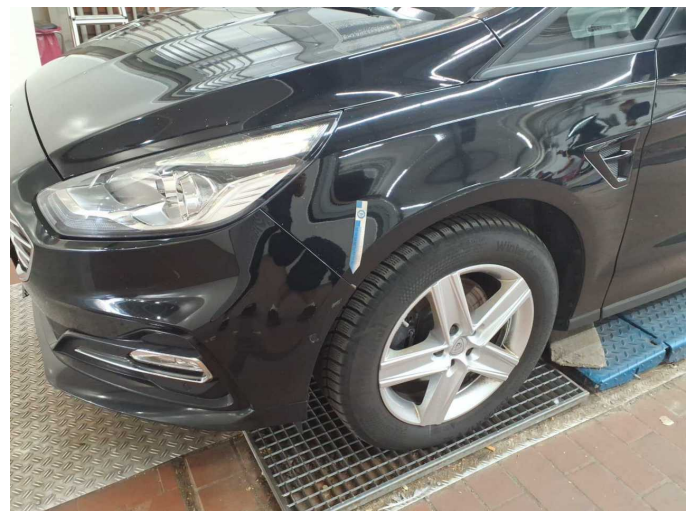
Damage 5: Roof: Roof rail - left side - dent(s) - Smart repair



Damage 5: Roof: Roof rail - left side - dent(s) - Smart repair



Damage 5: Roof: Roof rail - left side - dent(s) - Smart repair



Damage 6: Mudguard - left side: Mudguard - left side - Scratch(es) - Smart repair



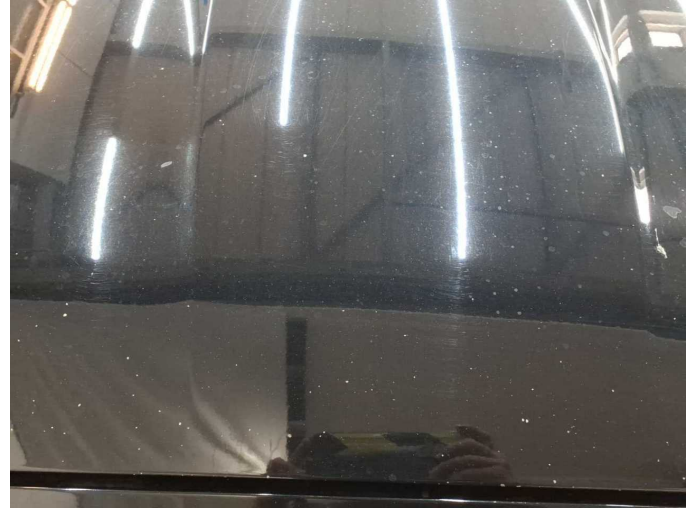
Damage 6: Mudguard - left side: Mudguard - left side - Scratch(es) - Smart repair



Damage 7: Misc.: Inspection / maintenance - Due - Perform



Damage 8: Bonnet: Bonnet - Stone chips - Paint



Damage 8: Bonnet: Bonnet - Stone chips - Paint



Damage 8: Bonnet: Bonnet - Stone chips - Paint



Damage 8: Bonnet: Bonnet - Stone chips - Paint



Damage 8: Bonnet: Bonnet - Stone chips - Paint



Damage 8: Bonnet: Bonnet - Stone chips - Paint



Damage 8: Bonnet: Bonnet - Stone chips - Paint



Missing part 1: 2nd wheel set: 2nd wheel set (Mitteldeckel) - Missing - Replace



Wartungshistorie

(gemäß Auftraggeber Informationen)

Fahrgestellnummer: WF0JXXWPCJNM08154
Hersteller / Modell: FORD FORD S-Max 2.0 EcoBlue Aut. TREND

Datum	KM-Stand	Beschreibung
30.04.2026	216.498	Motoröl b. Wartung; Ölfilter ern; Ölwechsel; Systemtest/Eigendiagnose; Wartung Sonstiges
13.02.2026	207.466	Motoröl b. Wartung; Ölfilter ern; Regelwartungsdienst; Wartung Sonstiges
18.12.2025	194.760	Motoröl b. Wartung; Ölwechsel; Systemtest/Eigendiagnose
13.11.2025	187.506	AU; Reparatur Sonstiges; Systemtest/Eigendiagnose
18.09.2025	181.194	Bremse Sonstiges; Bremsklötze vorne; Bremsscheiben + Klötze v; Bremsscheiben vorne; Kraftstofffilter ern; Luftfiltereinsatz ern; Motoröl b. Wartung; Ölfilter ern; Regelwartungsdienst; Wartung Sonstiges
03.09.2025	177.530	Batterie ern; Systemtest/Eigendiagnose
07.07.2025	167.374	Motoröl b. Wartung; Ölfilter ern; Ölwechsel; Wartung Sonstiges
14.04.2025	151.804	Bremse Sonstiges; Bremsklötze hinten; Motoröl b. Wartung; Ölfilter ern; Regelwartungsdienst; Wartung Sonstiges
27.12.2024	134.929	Motoröl b. Wartung; Ölwechsel
21.10.2024	121.653	Bremsinspektion vo + hi; Bremse Sonstiges; Bremsklötze vorne; Bremsscheiben + Klötze v; Bremsscheiben vorne
21.08.2024	111.092	Bremsflüssigkeit; Bremsflüssigkeit ern; Kraftstofffilter ern; Luftfiltereinsatz ern; Motoröl b. Wartung; Ölfilter ern; Regelwartungsdienst; Wartung Sonstiges
04.04.2024	87.163	Motoröl b. Wartung; Ölfilter ern; Regelwartungsdienst; Wartung Sonstiges
10.10.2023	60.689	Bremse Sonstiges; Bremsklötze vorne; Kraftstofffilter ern; Luftfiltereinsatz ern; Motoröl b. Wartung; Ölfilter ern; Regelwartungsdienst; Wartung Sonstiges
16.08.2023	51.402	Bremsinspektion vo + hi; Bremse Sonstiges; Bremsklötze hinten; Bremsscheiben + Klötze h; Bremsscheiben hinten
24.04.2023	31.518	Motoröl b. Wartung; Ölfilter ern; Regelwartungsdienst; Wartung Sonstiges