

Expertise

Protocol number: 45894581
Order No. / Reference: 26381736
Inspection date: 9 Jun 2026

Manufacturer: Volkswagen

Model: Tiguan Allspace 2.0 TDI SCR 4Motion DSG Elegance

VIN: WVGZZZ5N7RM085782



Vehicle details

Manufacturer / Type / Model / Equipment

Volkswagen Tiguan Allspace 2.0 TDI SCR 4Motion DSG Elegance

Vehicle Identification number WVGZZZ5N7RM085782

Mileage (Read) 115,136 km

First registration 9 Apr 2024

Number of holders 1

Power / Engine displacement 147 kw / 1,968 ccm

Fuel type / Cylinder Diesel / 4

Gearbox / Number of gears Automatic / 7

Type of drive All-wheel drive

Type of vehicle SUV

Colour / colour code Platinumgrey Metallic (D7X)

Doors / Seats 5 / 5

Upholstery type Alcantara / cloth

Colour of upholstery Black-Grey

Re-import no



Vehicle details			
Maintenance booklet / proof	digital proof / complete	Next maintenance in	6,000 km
Last service on / at	12/2025 at 88,711 km		
Key is / should be	2 / 2	FZG documents	ZB#2 (B) was available (copy), ZB#1 (S) was not available.
		Letter No.	HA881282
Previous damage / Accident	Detectable	Repainting	None detectable
Inspection conditions	sufficient	Lifting equipment / pit	yes
Test drive	Not performed	Engine function test	Performed
Manufacturer key number/ type code number	0603 / CLE 06177		
Emission standard	EURO6;WLTP;AP;PI/CI; M, N1 I	fine dust sticker	
Permitted total weight	2,380 kg	Empty weight	
Dimensions	4728 x 1839 x 1666		

Tyres

Mounted tyres				
#	Tyre size	Type of tyre	Manufacturer	Tread depth
1)	235/50 R19 99V	Summer tires (with run-flat tires) on Light alloy	Hankook	4mm / 4mm
2)	235/50 R19 99V	Summer tires (with run-flat tires) on Light alloy	Hankook	5mm / 5mm

Additional tyres				
#	Tyre size	Type of tyre	Manufacturer	Tread depth
1)	235/55 R18 104H	Winter tires (with run-flat tires) on Light alloy	Pirelli	4mm / 4mm
2)	235/55 R18 104H	Winter tires (with run-flat tires) on Light alloy	Pirelli	5mm / 5mm

Replacement				
Typ	Tyre size	Type of tyre	Manufacturer	Tread depth
N	145/85 R18 103M	Summer tyres on Steel	Sonstige	6 mm

Legend: Tread depth information for the left tire is listed first, for the right tire it is listed second on the axle in the direction of travel.



Equipment

Standard equipment

- Storage compartments in the overhead console
- Airbag: Head airbag system for front and rear passengers including front side airbags
- Permanent 4MOTION all-wheel drive
- Adaptive Cruise Control (ACC) "stop & go" with speed limiter
- Hill descent control
- Chrome trim on the side windows
- Decorative inlays "Barrel Craft"
- Diesel particulate filter
- Parking assistance
- Front door sill trims in aluminum, illuminated
- Electronic Stability Program with counter-steering support
- Driving profile selection
- Electric windows front and rear
- Pedestrian detection
- Luggage compartment lighting
- Transmission: 7-speed DSG
- Tailgate with sensor-controlled opening and closing, with remote unlocking - "Easy Open & Close"
- Interior mirror automatically dimming
- Air conditioning system "Air Care Climatronic"
- Rear headrests (3)
- Paint finish: Solid
- LED matrix headlights - IQ.LIGHT
- Steering wheel: Multifunction steering wheel in leather, with paddle shifters, heated
- Armrest - centre, rear
- Non-smoking version
- Emergency call service
- Package: Winter
- Proactive occupant protection system in conjunction with "Front Assist"
- Radio accessories: Digital radio reception DAB+
- Tire pressure monitoring system
- Wheels: Tire Mobility Set omitted
- Gearshift knob in leather
- Drawers under the front seats
- electromechanical power steering
- Seats: Front passenger seat backrest folds down completely
- Seats: Top comfort seats in the front
- Seats: Front seats with height adjustment
- Start-stop system with brake energy recuperation
- Power outlet: 2 USB-C ports on the front
- Telephone interface
- First aid kit, warning triangle and high-visibility vest
- Electronic immobilizer
- Green thermal insulation glazing, sides and rear
- Airbag for driver and front passenger including knee airbag on the driver's side
- Airbag: Side airbags for the outer seats of the 2nd row.
- App-Connect Wireless for Apple CarPlay and Android Auto
- Electrically adjustable, folding and heated exterior mirrors
- Exterior mirror housings painted silver
- third brake light
- Silver anodized roof rails
- Anti-theft alarm system with safe locking mechanism
- Display: Digital Cockpit Pro, multicolor, various selectable info profiles
- Electronic parking brake including auto-hold function
- Automatic headlight control, with LED daytime running lights
- Windscreen made of laminated safety glass, heat and sound insulating
- Luggage compartment floor height adjustable in 2 stages
- Glove box
- Rear window heated
- Rear window wiper with intermittent function
- ISOFIX mounting points for attaching 2 child seats to the rear seats
- Front headrests
- LED reading lights, 2 in the front and 2 in the rear
- LED headlights with bad weather light and cornering light
- Light in the front footwell
- Illuminated makeup mirrors in the sun visors
- Fatigue detection
- Emergency braking assistant "Front Assist"
- Package: Ambiance Package
- Padding: Microfleece
- Radio
- Radio accessories: 8 speakers
- Rain sensor
- Wheels: AirStop tires 235/50 R 19
- Wheels: Alloy (4) "Victoria Falls" 7 J x 19
- Keyless locking and starting system "Keyless Access" with safe locking mechanism
- Seat belts: Three-point automatic seat belts with belt tensioners for the outer rear seats
- Seats: Lumbar support in the front
- Seats: Heated front seats
- Lane keeping assistant "Lane Assist"
- 12-volt socket
- Bumpers in body color,
- Textile floor mats front and rear
- Prepared for later activation: Navigation function "Discover Media" incl. "Streaming & Internet"
- Central locking without safe locking, with remote control and 2 remote keys



Extra equipment

- Foldable towbar (electric release)
- Wirelessly heated windshield (infrared-reflective)
- Paint finish: Metallic
- Navigation system "Discover Media" incl. "Streaming & Internet"
- Mesh partition
- Package: "IQ.DRIVE" assistance package including "Emergency Assist" (Driving assistant "Travel Assist", Lane Assist lane keeping assistant and "Emergency Assist" - Parking assistant "Park Assist" including parking aid - Proactive occupant protection system in conjunction with "Front Assist" and "Side Assist" - Lane change assistant "Side Assist" - Traffic sign recognition)
- Package: Winter additionally with heated outer rear seats (Air Care Climatronic air conditioning with active combination filter, rear controls and 3-zone temperature control - windshield washer nozzles automatically heated at the front - front seats and outer rear seats heated)
- Radio accessories: "Harman Kardon" sound system (8+1 speakers - 480 watts total power - digital 16-channel amplifier - subwoofer)
- Rear View reversing camera
- Windows: Rear side windows and rear window tinted
- Seats: ergoActive front seats (ergoActive front seats height-adjustable, seat and backrest tilt adjustable, thigh support longitudinally adjustable - lumbar support front electrically adjustable and with massage function)
- Chassis: Adaptive chassis control DCC (allows the driver to choose between a comfortable, sporty or normal chassis setting at the touch of a button - reacts continuously to different driving situations and takes braking, steering and acceleration processes into account - Adaptive chassis control DCC incl. driving profile selection - ECO function)
- Package: Business Premium incl. Navigation (DSG) (2 USB-C ports in the front, 1 USB-C charging port on the rear center console - multifunction leather steering wheel, heated, with shift paddles - automatically heated windshield washer nozzles in the front - voice control - "Comfort" telephone interface with inductive charging function - heated front seats)
- Progressive steering (the steering ratio is progressively increased with increasing steering angle - the steering behavior becomes noticeably more direct depending on the driving situation, the steering wheel movements are significantly reduced and thus steering comfort is increased)
- Wheels: Spare wheel in a weight- and space-saving design (on-board tools and jack - spare wheel in a weight- and space-saving design)
- Auxiliary heating and ventilation (with radio remote control and timer)
- 230 volt socket

Brief expert findings

Documents submitted	At the time of the inspection, the vehicle registration certificate Part 2 (title) was available, but the vehicle registration certificate Part 1 (document) was not. (Copy)
VIN comparison	The vehicle identification number (VIN) was read from the vehicle and its conformity with the submitted documents was confirmed by the undersigned during the inspection.
Inspection	The inspection conditions were sufficient for the assessment of the vehicle. Lifting equipment and/or a pit were available for examining the vehicle.
Test drive	No test drive/shunting maneuver was carried out during the inspection of the vehicle.
Engine function test	An engine test run was performed.

Value reducing factors

No.	Component group	Description
1	Misc.	Inspection / maintenance (Nachweise unvollständig/ fehlen) - No deduction
2	Roof	Roof - Paint defect - Conditioning
3	Roof	Roof - dent(s) - Smooth repair work
4	Vehicle glazing	Windscreen - Broken / torn - Replace

Wear and tear

No.	Component group	Description
1	Bonnet	Bonnet - Stone chips - No deduction
2	2nd wheel set	2 tyres (über 4mm) - No deduction

The vehicle shows signs of wear and tear commensurate with its age and use.



Previous damages

No.	Previous damage	Extent of damage (Net)
1	Front, Side - left, Provided by user / customer, from 6 May 2025	4.633,22 €
2	Front, Provided by user / customer, from 29 May 2024	8.171,04 €

Order/Scope of Order

An order was placed to prepare a sales report for the described vehicle. This report includes the following:

- Description of key vehicle information
- Documentation of equipment features
(*Delivery by third-party service providers*)
- Documentation of damage, defects, missing parts
- Documentation of prior damage, unrepaired prior damage, repainting
- A brief visual or functional inspection of the equipment details, if possible.
(*Functional testing of driver assistance systems is not included in the scope of services!*)
- a photographic documentation of the vehicle

Basis for the order

This product is based on the guidelines for vehicle returns and valuations published by Alphabet Fleet GmbH. The expert makes the specific findings in each individual case objectively, within the framework of the prescribed standards, based on their own expertise.

The vehicle inspection takes place in a fully assembled, unassembled state.

Damage or defects that can only be detected during disassembly/diagnostic work or through further investigation remain within the realm of prognostic risk. An increased risk exists due to concealed defects caused by fraudulent misrepresentation and which were not identifiable by the expert.

Damage or defects resulting from normal use or wear and tear of the vehicle will be accepted in accordance with the applicable standard.

There was no explicit identification or monetary consideration of the expected features within the product.

Features which, in their nature and extent, slightly exceed normal use but do not constitute unacceptable damage, will be documented and indicated as signs of wear, if applicable.

Damage or defects that, according to the applicable standard, can no longer be attributed to normal use or wear and tear are listed under "Value Reducing Factors" in the product description.

Depending on the product specification, a monetary ID can be provided. If this takes place, the costs can be 100% d or pro rata depending on the vehicle's age and mileage.

Previous damages

According to available information previous damages were repaired at the vehicle. Traces of repairs, which allow conclusions about the area of repair, were not recognizable during the inspection.

Comments

- Der Winterradsatz ist kein Bestandteil der Ausstattungsliste.



Figure 1: Diagonal front (left)



Figure 2: Diagonal front (right)



Figure 3: Diagonal rear (left)



Figure 4: Diagonal rear (right)



Figure 5: Interior - front

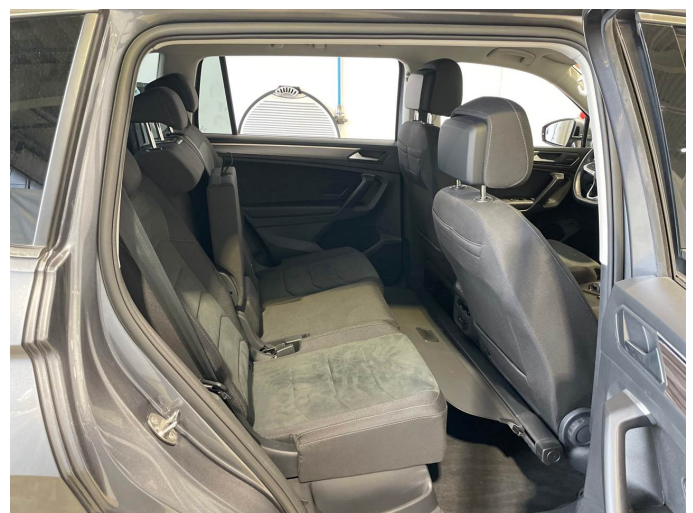


Figure 6: Interior - rear



Figure 7: Instrument cluster



Figure 8: Instrument panel



Figure 9: Interior 360° view



Figure 10: Cargo area



Figure 11: VIN

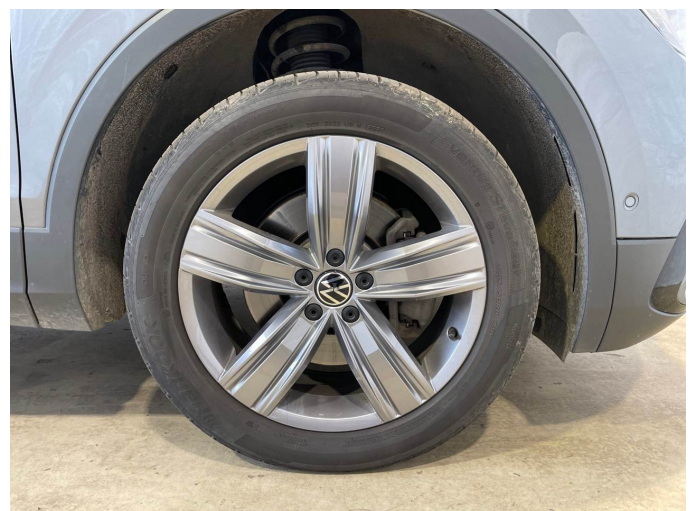


Figure 12: Mounted tyres

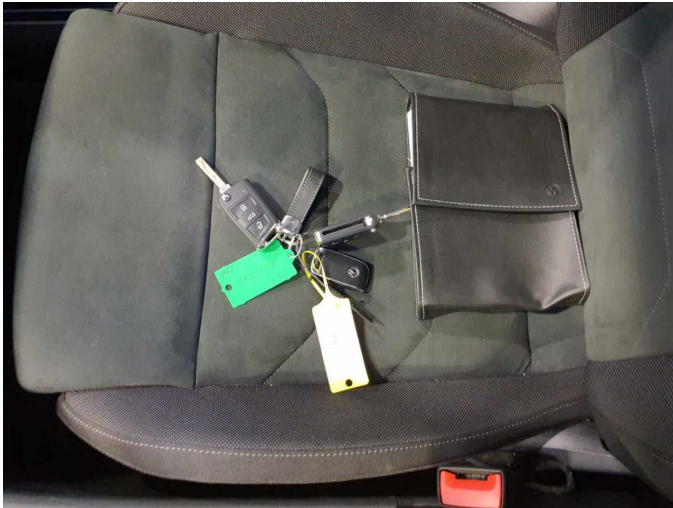


Figure 13: Documents



Figure 14: Additional tyres



Figure 15: Additional tyres



Figure 16: Navigation



Figure 17: Misc.

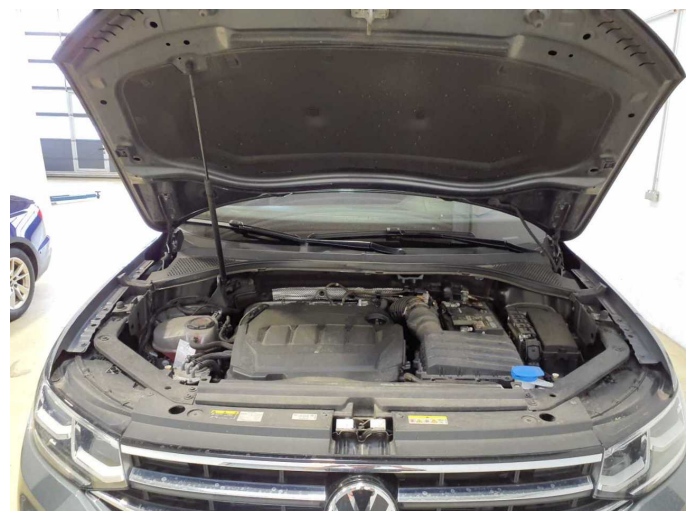


Figure 18: Misc.



Figure 19: Misc.



Figure 20: Misc.



Figure 21: Misc.



Figure 22: Misc.



Figure 23: Misc.



Figure 24: Misc.



Damage 2: Roof: Roof - Paint defect - Conditioning



Damage 2: Roof: Roof - Paint defect - Conditioning



Damage 3: Roof: Roof - dent(s) - Smooth repair work



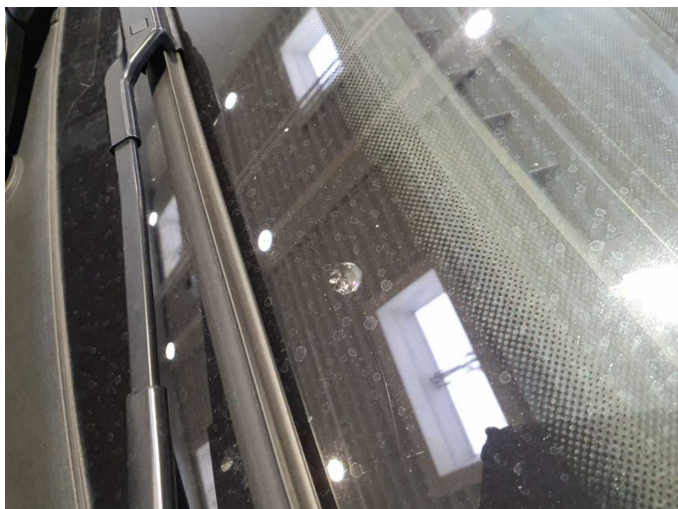
Damage 3: Roof: Roof - dent(s) - Smooth repair work



Damage 4: Vehicle glazing: Windscreen - Broken / torn - Replace



Damage 4: Vehicle glazing: Windscreen - Broken / torn - Replace



Damage 4: Vehicle glazing: Windscreen - Broken / torn - Replace



Wartungshistorie

(gemäß Auftraggeber Informationen)

Fahrgestellnummer: WVGZZZ5N7RM085782
Hersteller / Modell: VOLKSWAGEN VW Tiguan Allspace 2.0 TDI SCR 4Motion DSG
Elegance

Datum	KM-Stand	Beschreibung
03.12.2025	88.711	Bremse Sonstiges; Bremsklötze hinten; Bremsscheiben hinten; Bremsscheiben vorne; Kraftstofffilter ern; Motoröl b. Wartung; Ölfilter ern; Regelwartungsdienst; Wartung Sonstiges