

Expertise

Protocol number: 46160381
Order No. / Reference: 26482179
Inspection date: 25 Jun 2026

Manufacturer: Mercedes-Benz

Model: C 220 d T 9G-TRONIC Avantgarde

VIN: W1KAH0EB2PF110634



Vehicle details

Manufacturer / Type / Model / Equipment

Mercedes-Benz C 220 d T 9G-TRONIC Avantgarde

Vehicle Identification number W1KAH0EB2PF110634

Mileage (Read) 113,636 km

First registration 4 Jun 2023

Number of holders 1

Power / Engine displacement 147 kw / 1,993 ccm

Fuel type / Cylinder Hybrid Diesel / E / 4

Gearbox / Number of gears Automatic / 9

Type of drive Rear drive

Type of vehicle Station wagon

Colour / colour code Hightechsilber Metallic

Doors / Seats 5 / 5

Upholstery type Cloth / leather combination

Colour of upholstery Black



Vehicle details

Maintenance booklet / proof	digital proof / complete	Next maintenance in	255 Tag(e)
Last service on / at	01/2026 at 104,760 km		
Key is / should be	2 / 2	FZG documents	ZB#2 (B) was available (copy), ZB#1 (S) was not available.
		Letter No.	GS717167
Previous damage / Accident	Detectable	Repainting	Detectable
Inspection conditions	sufficient	Lifting equipment / pit	No
Test drive	Not performed	Engine function test	Performed
Manufacturer key number/ type code number	2222 / AYH 00319		
Emission standard	EURO6;WLTP;AP;PI/CI; M, N1 I	fine dust sticker	
Permitted total weight	2,400 kg	Empty weight	

Tyres

Mounted tyres

#	Tyre size	Type of tyre	Manufacturer	Tread depth
1)	225/50 R17 94Y	Summer tyres on Light alloy	Pirelli	5mm / 5mm
2)	225/50 R17 94Y	Summer tyres on Light alloy	Pirelli	4mm / 4mm

Additional tyres

#	Tyre size	Type of tyre	Manufacturer	Tread depth
1)	225/50 R17 98H	Winter tyres on Light alloy	Pirelli	5mm / 5mm
2)	225/50 R17 98H	Winter tyres on Light alloy	Pirelli	6mm / 6mm

Legend: Tread depth information for the left tire is listed first, for the right tire it is listed second on the axle in the direction of travel.



Equipment

Standard equipment

- Airbag for driver and front passenger
- Airbag: Center airbag
- Airbag: Windowbag for driver and front passenger
- Left and right exterior mirrors are heated and electrically adjustable
- Roof rails in polished aluminum
- Double cup holder at the front
- EASY-PACK tailgate
- Electronic Stability Program (ESP)
- Velour floor mats
- Transmission: 9-speed automatic, 9G-TRONIC
- Rear bumper in body color
- Interior headliner fabric crystal grey
- KEYLESS-GO start function
- THERMATIC automatic climate control with 1 climate zone
- Front headrests
- LED High Performance Headlights
- Mercedes-Benz emergency call system
- Center console in high-gloss black
- Package: AVANTGARDE Exterior (radiator grille with integrated Mercedes star and a chrome-plated louvre, radiator grille frame in chrome - 43.2 cm (17") 5-spoke alloy wheels, high-gloss black paint and gloss coating, 225/50 R 17 on 7 J x 17 ET 44.5 - Dynamic front bumper with centrally positioned trim strip in high-gloss chrome and diamond-pattern air intakes in black. - AGILITY CONTROL suspension with 15 mm lowering and selective damping system. - Strip on the rear side windows in high-gloss black.)
- Windscreen wipers with rain sensor
- Seats: Rear seat backrests foldable
- Cruise control
- Electronic immobilizer
- Decorative elements in diamond pattern, silver-grey
- Airbag: Automatic passenger airbag deactivation
- Airbag: Side airbag for driver and front passenger
- Ambient lighting with 64 light colors
- Basic services
- Brake assist, active
- Diesel particulate filter
- DYNAMIC SELECT
- ECO start/stop function
- Electric windows (4-way)
- Speed Limit Assistant
- rear window wiper
- Heated rear window
- ISOFIX child seat attachment with top tether in the rear
- Mechanical child safety lock for the rear doors
- Rear headrests (3)
- Cargo area cover including EASY-PACK safety net
- Steering wheel: Multifunction sports steering wheel in leather
- Package: Storage
- Package: Interior lighting package
- Upholstery: ARTICO leatherette/fabric
- Radio: Extended MBUX functions
- Radio: MBUX
- Radio accessories: Digital radio (DAB)
- Radio accessories: Communication module (LTE) for using Mercedes me connect services
- Radio accessories: Central display
- Tire pressure monitoring system (TPMS)
- Remote Services Plus
- Power steering
- Lane Keeping Assist, active
- High-visibility vest for drivers
- Central locking with remote control



Extra equipment

- Ambient lighting with 64 light colors (with directly illuminated light lines.)
- THERMATIC automatic climate control with 2 climate zones (control via the central display or the climate control unit in the center console; sensor system for detecting, for example, indoor/outdoor temperature, sunlight, humidity, and dew point; automatic recirculation (only in conjunction with navigation system); ventilation system consisting of: 3 center vents and 2 side vents; fine dust activated carbon filter for filtering dust, soot, and pollen; dew point sensor; residual heat function for efficient use of engine waste heat)
- Package: Advanced Comfort Package (Heated seats for driver and front passenger - Seat Comfort Package: - Numerous electric and manual adjustment options for the front seats to adapt to the specific body and comfort requirements of the driver and front passenger - Electro-pneumatic 4-way lumbar support and lateral support adjustment with control element on the seat - Electric seat cushion tilt adjustment - Electric height adjustment - Electric backrest adjustment - Electric seat cushion depth adjustment - Mechanical longitudinal adjustment - Mechanical headrest adjustment)
- Package: High-End Business (Mirror Package: Electrically folding exterior mirrors, automatic dimming, ambient lighting - Advanced Comfort Package: Heated seats for driver/front passenger, 4-way lumbar support, seat comfort package - Parking Package: with reversing camera - Assistance Package: Blind Spot Assist - Advanced Infotainment Package: MBUX Navigation Premium, traffic sign recognition, smartphone integration, driver display - 31.2 cm (12.3"), central display - 30.2 cm (11.9") touchscreen LCD - fuel tank with largest capacity)
- Package: Luggage compartment comfort (electrically folding rear seat backrests via switches on the right and left in the control panel in the load compartment - electric opening and closing of the load compartment roller blind - 12V socket on the left in the control panel in the load compartment - reversible mat, with a rubberized, non-slip side and a soft velour side)
- Wheels: Complete summer wheel sets fitted at the factory
- Wheels: Winter complete set of M+S wheels, 4-way 43.2 cm (17") light alloy wheels with 10-twin-spoke design (vanadium silver painted with 225/50 R 17 on 7 J x 17 ET 44, 5.)
- Type designation removed from trunk lid
- Decorative elements, metal structure
- Towbar with ESP trailer stabilization
- Head-up display
- Paint finish: Metallic
- Center console metal structure
- Package: Advanced Infotainment Package (MBUX Navigation Premium (hard drive navigation, pre-installation for Live Traffic Information), Traffic Sign Assist, Smartphone Integration (connects the mobile phone wirelessly to the multimedia system via Apple CarPlay and Android Auto), Driver Display - 31.2 cm (12.3") color LCD display, Central Display - 30.2 cm (11.9") touch display with LCD technology)
- Package: Advanced Light Package (DIGITAL LIGHT: -HD system with projection module (more than 1.3 million pixels per headlight) and MULTIBEAM LED background module -Adaptive Highbeam Assist Plus -ULTRA RANGE high beam with a range of more than 600 m -Topography compensation -Cornering light with roundabout and intersection function -Active curve light with predictive control -Extended fog light, city light, country road light, motorway light, motorway high beam and bad weather light)
- Package: Driving Assistance (Active Distance Assist DISTRONIC, Active Speed Limit Assist, Extended Automatic Restart on Highways, Route-Based Speed Adaptation with Traffic Jam End Function, Active Traffic Jam Assist, Active Steering Assist, Active Lane Change Assist, Active Emergency Stop Assist, Emergency Lane Function, Active Brake Assist with Vehicle, Bicycle and Pedestrian Detection; Intersection Function, Turn Function, Traffic Jam End Emergency Braking Function, Evasive Steering Assist, Active Lane Keeping Assist, Active Blind Spot Assist, Exit Warning Function)
- Package: Parking (12 ultrasonic sensors - reversing camera - Active Parking Assist with PARKTRONIC: detects free parking spaces, assisted parking, visual and acoustic warning, display of camera and ultrasonic data in the media display - Cross traffic warning: can provide visual and acoustic warnings when reversing out of a parking space and, if necessary, automatically initiate emergency braking - Reverse maneuvering brake: can trigger a braking process - Drive-away assist)
- Heated windshield washer system
- Sunroof: Electric panoramic sunroof
- Seats: Comfort seats
- Heat-insulating dark tinted glass



Brief expert findings

Documents submitted	At the time of the inspection, the vehicle registration certificate Part 2 (title) was available, but the vehicle registration certificate Part 1 (document) was not. (Copy)
VIN comparison	The vehicle identification number (VIN) was read from the vehicle and its conformity with the submitted documents was confirmed by the undersigned during the inspection.
Inspection	The inspection conditions were sufficient for the assessment of the vehicle. No lifting equipment or pit was available for inspecting the vehicle. Therefore, inspection of the vehicle's underside was only possible to a limited extent.
Test drive	No test drive/shunting maneuver was carried out during the inspection of the vehicle.
Engine function test	An engine test run was performed.

Value reducing factors

No.	Component group	Description
1	Wheel / tyres	Alloy rim - rear right side - Scratch(es) - Loss in value
2	Wheel / tyres	Alloy rim - front right side - Scratched - Loss in value
3	Mudguard - left side	Mudguard - left side - Scratch(es) - Paint
4	Front bumper	Front bumper - Scratched - Repair and paint

Wear and tear

No.	Component group	Description
1	Rear bumper	Rear bumper - Scratch(es) - No deduction
2	Interior	Interior - Scratch(es) - No deduction
3	Vehicle glazing	Windscreen - Stone chips - No deduction
4	Bonnet	Bonnet - Stone chips - No deduction

The vehicle shows signs of wear and tear commensurate with its age and use.

Previous damages

No.	Previous damage	Extent of damage (Net)
1	Side right, Provided by user / customer, from 19 Feb 2025	2.418,00 €

Repainting

No.	Repainting
1	Mudguard - right side
2	Door - front right side

Paint coat thickness measurement

Mudguard - right side	180 µm	Door - front right side	165 µm
-----------------------	--------	-------------------------	--------



Order/Scope of Order

An order was placed to prepare a sales report for the described vehicle. This report includes the following:

- Description of key vehicle information
- Documentation of equipment features
(Delivery by third-party service providers)
- Documentation of damage, defects, missing parts
- Documentation of prior damage, unrepaired prior damage, repainting
- A brief visual or functional inspection of the equipment details, if possible.
(Functional testing of driver assistance systems is not included in the scope of services!)
- a photographic documentation of the vehicle

Basis for the order

This product is based on the guidelines for vehicle returns and valuations published by Alphabet Fleet GmbH. The expert makes the specific findings in each individual case objectively, within the framework of the prescribed standards, based on their own expertise.

The vehicle inspection takes place in a fully assembled, unassembled state.

Damage or defects that can only be detected during disassembly/diagnostic work or through further investigation remain within the realm of prognostic risk. An increased risk exists due to concealed defects caused by fraudulent misrepresentation and which were not identifiable by the expert.

Damage or defects resulting from normal use or wear and tear of the vehicle will be accepted in accordance with the applicable standard.

There was no explicit identification or monetary consideration of the expected features within the product.

Features which, in their nature and extent, slightly exceed normal use but do not constitute unacceptable damage, will be documented and indicated as signs of wear, if applicable.

Damage or defects that, according to the applicable standard, can no longer be attributed to normal use or wear and tear are listed under "Value Reducing Factors" in the product description.

Depending on the product specification, a monetary ID can be provided. If this takes place, the costs can be 100% d or pro rata depending on the vehicle's age and mileage.

Previous damages

According to available information previous damages were repaired at the vehicle. Traces of repairs, which allow conclusions about the area of repair, were not recognizable during the inspection.

Comments

- Die Unterbodenbesichtigung war nur ebenerdig & eingeschränkt möglich. Mehrkosten möglich.



Figure 1: Diagonal front (left)



Figure 2: Diagonal front (right)



Figure 3: Diagonal rear (left)



Figure 4: Diagonal rear (right)



Figure 5: Interior - front



Figure 6: Interior - rear



Figure 7: Instrument cluster



Figure 8: Instrument panel



Figure 9: Interior 360° view



Figure 10: Cargo area



Figure 11: VIN



Figure 12: Mounted tyres



Figure 13: Documents

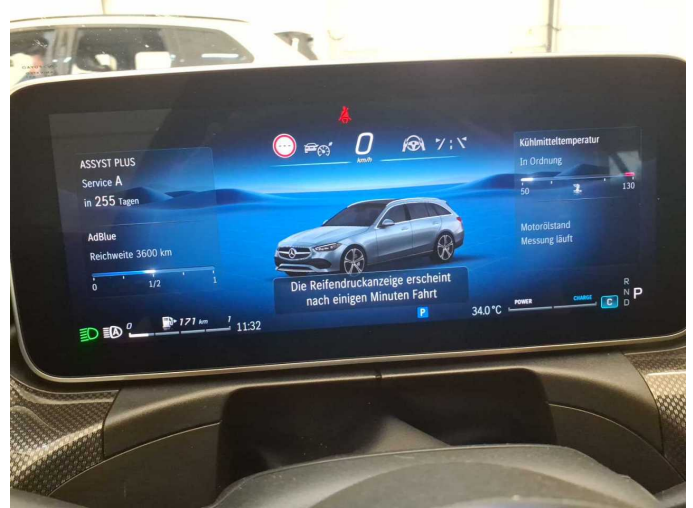


Figure 14: Documents



Figure 15: Additional tyres

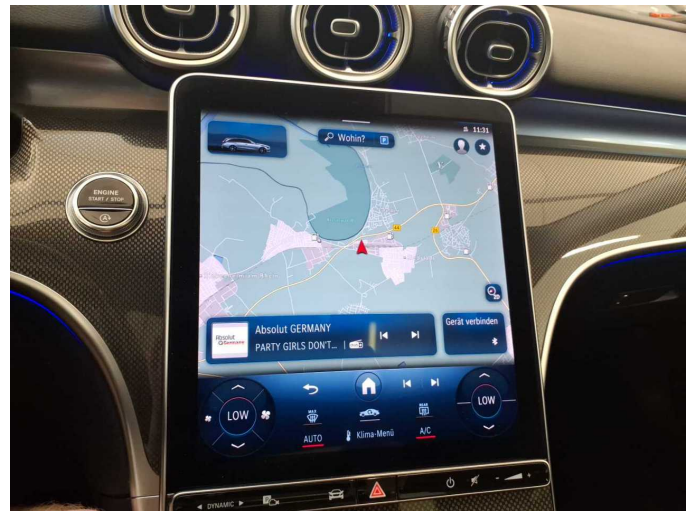


Figure 16: Navigation

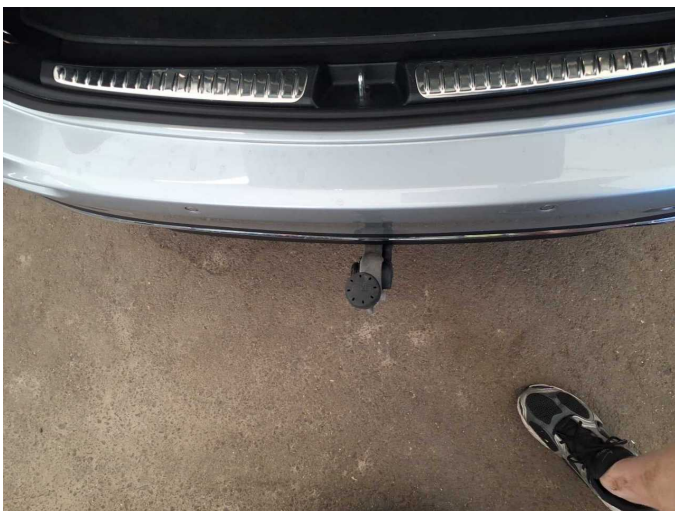


Figure 17: Misc.



Figure 18: Misc.



Figure 19: Misc.



Figure 20: Misc.



Figure 21: Misc.

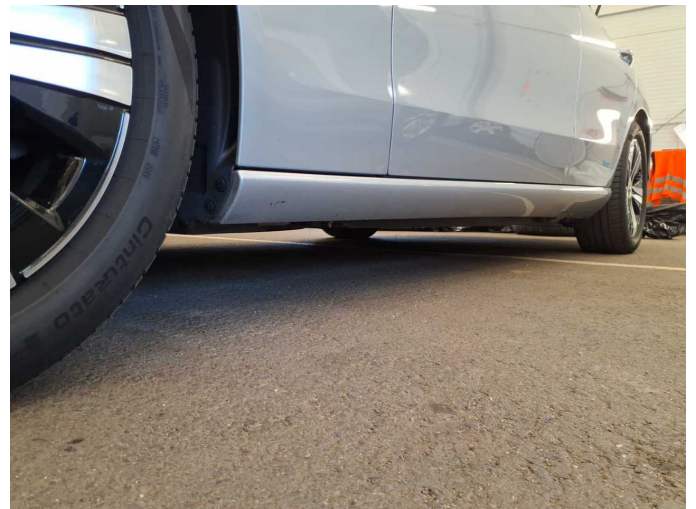


Figure 22: Misc.



Figure 23: Misc.



Figure 24: Misc.



Figure 25: Misc.



Figure 26: Misc.

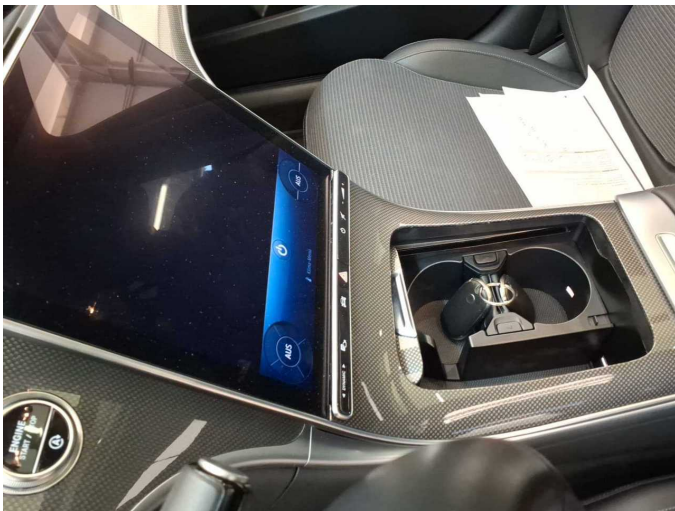


Figure 27: Misc.



Figure 28: Misc.



Figure 29: Misc.



Figure 30: Misc.



Figure 31: Misc.



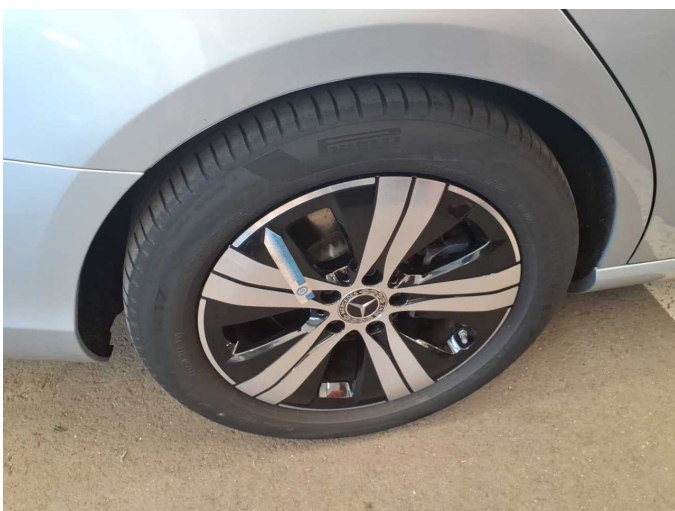
Figure 32: Misc.



Damage 1: Wheel / tyres: Alloy rim - rear right side - Scratch(es) - Loss in value



Damage 1: Wheel / tyres: Alloy rim - rear right side - Scratch(es) - Loss in value



Damage 1: Wheel / tyres: Alloy rim - rear right side - Scratch(es) - Loss in value



Damage 2: Wheel / tyres: Alloy rim - front right side - Scratched - Loss in value



Damage 2: Wheel / tyres: Alloy rim - front right side - Scratched - Loss in value



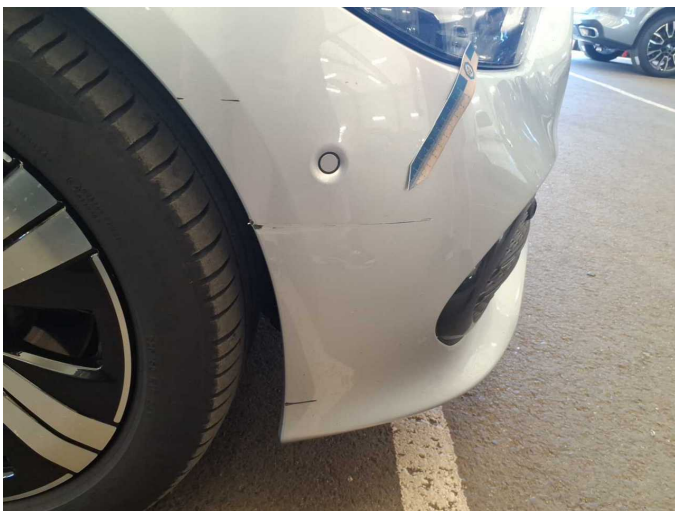
Damage 3: Mudguard - left side: Mudguard - left side - Scratch(es) - Paint



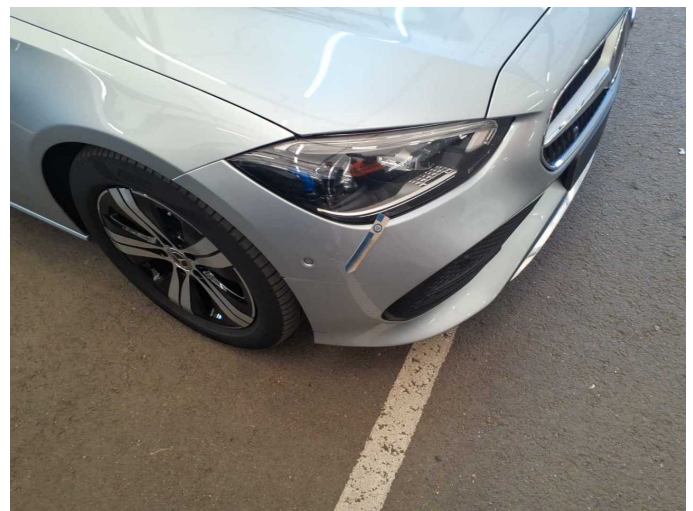
Damage 3: Mudguard - left side: Mudguard - left side - Scratch(es) - Paint



Damage 4: Front bumper: Front bumper - Scratched - Repair and paint



Damage 4: Front bumper: Front bumper - Scratched - Repair and paint



Damage 4: Front bumper: Front bumper - Scratched - Repair and paint



Damage 4: Front bumper: Front bumper - Scratched - Repair and paint



Damage 4: Front bumper: Front bumper - Scratched - Repair and paint



Damage 4: Front bumper: Front bumper - Scratched - Repair and paint



Wear and tear 1: Rear bumper: Rear bumper - Scratch(es) - No deduction



Wear and tear 1: Rear bumper: Rear bumper - Scratch(es) - No deduction



Wear and tear 4: Bonnet: Bonnet - Stone chips - No deduction



Wear and tear 4: Bonnet: Bonnet - Stone chips - No deduction



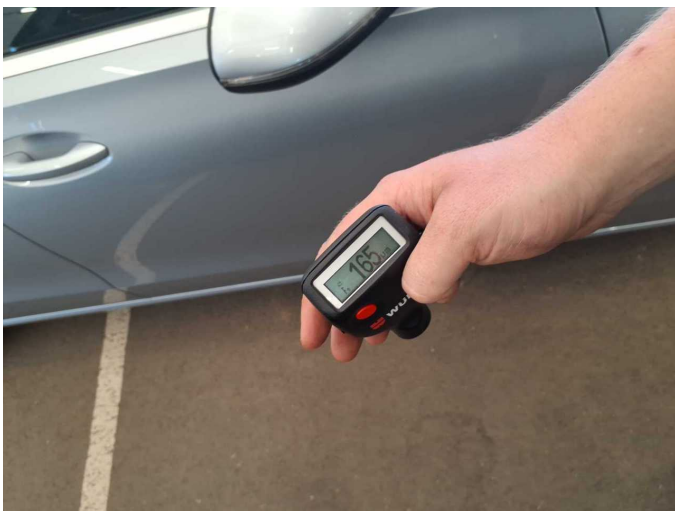
Repainting 1: Mudguard - right side



Repainting 1: Mudguard - right side



Repainting 2: Door - front right side



Repainting 2: Door - front right side



Wartungshistorie

(gemäß Auftraggeber Informationen)

Fahrgestellnummer: W1KAH0EB2PF110634
Hersteller / Modell: MERCEDES-BENZ MERCEDES-BENZ C 220 d T 9G-TRONIC
Avantgarde

Datum	KM-Stand	Beschreibung
05.02.2026	103.578	Systemtest/Eigendiagnose
30.01.2026	104.760	Regelwartungsdienst
26.05.2025	80.663	Regelwartungsdienst
12.09.2024	54.244	Regelwartungsdienst
12.02.2024	0	Motoröl b. Wartung; Ölfilter ern; Regelwartungsdienst; Wartung Sonstiges
23.01.2024	28.655	Motoröl b. Wartung; Ölfilter ern; Regelwartungsdienst; Wartung Sonstiges
15.01.2024	28.655	Regelwartungsdienst