

Expertise

Protocol number: 45511663
Order No. / Reference: 26158178
Inspection date: 18 May 2026

Manufacturer: Volvo

Model: XC40 Recharge 82 kWh Twin Motor Ultimate

VIN: YV1XZERR2R2346162



Vehicle details

Manufacturer / Type / Model / Equipment

Volvo XC40 Recharge 82 kWh Twin Motor Ultimate

Vehicle Identification number YV1XZERR2R2346162

Mileage (Read) 73,598 km

First registration 28 Mar 2024

Number of holders 1

Power / Engine displacement 183 kw / 0 ccm

Fuel type / Cylinder Electric / 4

Gearbox / Number of gears Automatic / 1

Type of drive All-wheel drive

Type of vehicle SUV

Colour / colour code Vapour Grey Metallic/
Kontrastdach Black

Doors / Seats 5 / 5

Upholstery type Artificial leather

Colour of upholstery Black-Anthracite



Vehicle details

Maintenance booklet / proof	Non-existent	Next maintenance in	18,337 km
Key is / should be	2 / 2	FZG documents	ZB#2 (B) was available (copy), ZB#1 (S) was not available.
		Letter No.	GY641123
Previous damage / Accident	None detectable	Repainting	None detectable
Inspection conditions	sufficient	Lifting equipment / pit	yes
Test drive	Not performed	Engine function test	Performed
Manufacturer key number/ type code number	9101 / BYJ 00015		
Emission standard	2017/1151;WLTP;reine Elektrofz	fine dust sticker	
Permitted total weight	2,650 kg	Empty weight	

Tyres

Mounted tyres

#	Tyre size	Type of tyre	Manufacturer	Tread depth
1)	235/50 R19 99H	Winter tyres on Light alloy	Pirelli	6mm / 6mm
2)	235/50 R19 99H	Winter tyres on Light alloy	Pirelli	5mm / 5mm

Additional tyres

#	Tyre size	Type of tyre	Manufacturer	Tread depth
1)	235/50 R19 103V	Summer tyres on Light alloy	Continental	3mm / 3mm
2)	235/50 R19 103V	Summer tyres on Light alloy	Continental	4mm / 4mm

Legend: Tread depth information for the left tire is listed first, for the right tire it is listed second on the axle in the direction of travel.

TÜV SÜD Auto Partner GmbH
Wiesenring 2
04159 Leipzig

Inspection location
Hartmann Fleet Professionals GmbH
Leerenstraße 25
29683 Bad Fallingbommel



Equipment



Standard equipment

- 8-fold tires as a replacement for all-season tires
- ABS - Anti-lock Braking System
- Passenger side airbag can be deactivated
- Airbags (airbags for driver and front passenger with two-stage deployment system - knee airbag for driver - side airbags for driver and front passenger - head/shoulder airbags for all occupants)
- Ambient lighting (Extended interior lighting with: - Ambient lighting front and rear - Exit lights front and rear - Illuminated door pockets front and rear - Illuminated decorative inserts (in dashboard and front doors) - Work light on the tailgate - Illuminated footwell front and rear - Reading lights front and rear)
- Heated exterior mirrors and rear window
- Hill start assist
- third brake light
- Anthracite headliner
- Roof edge spoiler
- Roof rails in high-gloss black (integrated)
- Digital Services including Google Maps navigation system (Google Services (includes Google Maps, Google Assistant, Google Play Store and unlimited data volume) - Volvo On Call (includes, among other things, alerting the Volvo On Call service center at the touch of a button as well as additional convenience services via the Volvo Cars App))
- Driver Awareness (Blind Spot Information System (BLIS) - Blind Spot Assist including Lane Change Warning for rapidly approaching vehicles - Cross Traffic Alert (CTA) - Cross Traffic Warning with braking intervention - Warning of vehicles, cyclists and pedestrians approaching from the side when reversing out of a parking space, including braking to a standstill if warning signals are ignored - Rear Impact Mitigation - Preventive protection in case of impending rear-end collisions)
- Enhanced air purification system (with fine dust filtration according to air quality standard PM2.5)
- Electric windows front and rear (with auto-down and auto-up function)
- Front luggage compartment (31 liters)
- Luggage compartment partition net
- Cup holders (two) in the center console
- Hooks for carrier bags in the luggage compartment (two on each side)
- rear window wiper
- Interior lighting (ambient lighting (white) front, illuminated make-up mirrors on driver and passenger side, welcome lighting front, headliner, front footwell, luggage compartment lighting on both sides, glove compartment, reading lights front)
- Child safety lock for the rear doors (electric)
- Automatic climate control with 2-zone temperature control (including separate temperature control for driver and front passenger, automatic blower control and air distribution - including air quality system with activated carbon filter)
- Waste bin integrated into center console (removable)
- Acoustic Vehicle Alerting System (AVAS) (Acoustic pedestrian/cyclist protection through artificially generated driving noises in the speed range up to 20 km/h)
- Active safety belts with belt tensioners
- Alarm system with motion/tilt sensor and security lock
- All-wheel drive (AWD)
- Android infotainment system (9" touchscreen (22.9 cm diagonal) - Bluetooth hands-free system incl. audio streaming - Digital vehicle owner's manual - Digital radio reception (DAB+) - Over-the-air updates (OTA)
- Fold-out (bag) hook on the glove compartment
- Electrically adjustable exterior mirrors
- Hill descent control
- LED turn signals integrated into the exterior mirrors
- Convenient Entry and Start (vehicle start by pressing the brake pedal and engaging the forward (D) or reverse (R) gear)
- Deactivation of the high-voltage battery (in case of a collision)
- Digital instrumentation 2nd generation (Full graphic 12.3" driver display (31.2 cm diagonal) with two variable round instruments and information display (e.g. for navigation map view))
- Driver Assistance (Adaptive Cruise Control - Emergency Stop Assist (automatic emergency stop system if warnings are ignored due to the driver's failure to steer, brake and accelerate, including activation of the hazard warning lights and automatic braking to a standstill) - Pilot Assist (lane guidance assistant with adaptive cruise control up to speeds of 130 km/h))
- Pass-through hatch behind the center armrest in the rear
- Aluminum door sill plates with Recharge lettering, front
- Electronic Stability Control (ESC)
- Electronic differential lock
- Foldable cargo floor with fastening system for carrier bags in the luggage compartment
- Automatic emergency braking (locking the vehicle after the airbags or seatbelt pretensioners have been deployed to prevent secondary accidents.)
- Transmission: 1-speed direct drive
- Front seat belt height adjustment
- Automatic tailgate (electric)
- Heated rear window
- Interior and exterior mirrors automatically dimming
- Intelligent Speed Assist (Intelligent speed assistant - warning when exceeding the maximum permitted speed)
- ISOFIX mounting points (for the front passenger seat and the outer rear seats)
- Keyless Drive (electronic access system) with sensor-controlled tailgate, illuminated door handles and puddle lights
- Comfort opening/closing of the side windows via radio remote control
- Headrests of the 2nd row of seats can be folded down (electrically)



- Front headrests
- Charging cable Type 2/Type 2 (Mode 3) (6 m length, 3-phase, 16A (for connection to a charging station with Type 2 connector))
- Steering wheel adjustable for height and reach
- Steering wheel: Sports steering wheel
- Rear center armrest with two integrated cup holders
- Emergency brake lights (brake lights flash rapidly during heavy deceleration; hazard warning lights are automatically activated below 10 km/h)
- Optical override protection front and rear in high-gloss black
- Package: Winter Package (front seat heating - steering wheel heating - heat pump, support for air conditioning as well as heating or cooling of the high-voltage battery for range optimization)
- Parking camera with 360° surround view (including front, side and rear parking aid with automatic braking intervention (rear))
- Radio accessories: Voice function
- Recharge emblem on the rear of the vehicle
- Recharge emblem on the C-pillar
- Rain sensor
- Tire pressure monitoring system (with tire-specific pressure loss warning)
- Run-off Road Protection (preventive protection system in case of unintentional leaving the road or impending rollovers including emergency call via Volvo On Call and door unlocking)
- Wheels: 19" 5-spoke aero-design alloy wheels (diamond cut/high-gloss black with all-season tires 8.5 x 19", 235/50 R19 (front) and 8.5 x 19", 255/45 R19 (rear))
- Rear seats can be folded down in a 60/40 split or completely.
- Whiplash Protection System (WHIPS)
- Service, maintenance and wear
- Seats: Passenger seat adjustable in height and length
- Seats: Electrically adjustable driver and passenger seats
- Seats: Driver's seat height and length adjustable including tilt adjustment
- Sport exterior mirrors in high-gloss black
- Electric auxiliary heater with timer
- Phone: Inductive smartphone charging system
- Textile floor mats: Sport textile floor mats front and rear
- Glazing: Colored glazing
- Preparation for Trailer Stability Assist (TSA)
- Immobiliser
- Central locking system with two remote controls and integrated emergency keys

Extra equipment

- Towbar (semi-electric)
- Pixel LED headlights "Thor's Hammer" (with extended high beam, dynamic cornering lights, intelligent high beam assist with adaptive headlight range control, integrated LED daytime running lights and welcome sequence)

- Charge control display (set current limit (from 6A) and charge level in steps of 10 % b to 100 %)
- LED fog lights (integrated into the front spoiler)
- Steering wheel: Multifunction buttons on the steering wheel
- Illuminated makeup mirror for driver and front passenger
- Front center armrest with integrated storage compartment
- One Pedal Drive (acceleration and deceleration to a standstill via the accelerator pedal - activation/deactivation via the menu - recuperation (brake energy recovery) as soon as the foot is taken off the accelerator pedal, to optimize the range)
- Panoramic glass sliding sunroof with lifting function (electric) (with integrated, continuously adjustable sunshade)
- Electric parking brake
- Radio: Premium Sound audio system by Harman Kardon (600 watts of power - 13 speakers - Fresh Air subwoofer - Dirac Unison sound optimization)
- Radio accessories: Two USB-C ports in the center tunnel (front and rear)
- Recharge Pure Electric front grille and grille surround in body color
- Roadside Assistance (free mobility promise, 3 years and almost throughout Europe. Covers, for example, mechanical or electrical defects, tire problems, traffic accidents in which the vehicle is so badly damaged that it is unroadworthy, etc. Also applies in the event of premature change of ownership.)
- Wheels: Tire sealant (Incl. 12-volt compressor, maximum speed 80 km/h)
- Rear view camera
- Safety Assistance
- Headlight cleaning system
- Side window surround in high-gloss black (bottom)
- Speed-sensitive power steering
- Seats: Adjustable (manual) leg rest for driver and front passenger seats
- Seats: Lumbar support (4-way adjustable) for driver and front passenger seats
- Sport front and rear apron
- 12-volt socket at the front
- Textile floor mats front and rear
- First aid kit and warning triangle
- Lashing eyes (four) in the luggage compartment
- Warning tone/indicator when seat belts are not fastened (for all seats)

- Paintwork: Metallic paint with contrasting roof in Black Stone
- Upholstery: Microtech (imitation leather) (incl. rear center armrest - Backlit inlay: Topography - Headliner: Anthracite)



Brief expert findings

Documents submitted	At the time of the inspection, the vehicle registration certificate Part 2 (title) was available, but the vehicle registration certificate Part 1 (document) was not. (Copy)
VIN comparison	The vehicle identification number (VIN) was read from the vehicle and its conformity with the submitted documents was confirmed by the undersigned during the inspection.
Inspection	The inspection conditions were sufficient for the assessment of the vehicle. Lifting equipment and/or a pit were available for examining the vehicle.
Test drive	No test drive/shunting maneuver was carried out during the inspection of the vehicle.
Engine function test	An engine test run was performed.

Value reducing factors

No.	Component group	Description
1	Misc.	Inspection / maintenance - No evidence - No deduction
2	Misc.	Inspection / maintenance - No evidence - No deduction
3	Rear bumper	Bumper - rear left side - Scratch(es) - Smart repair
4	Rear bumper	Bumper - rear right side - Scratch(es) - Smart repair
5	Rear bumper	Spoiler - Deformed - Replace

Wear and tear

No.	Component group	Description
1	Wheel / tyres	Alloy rim - front right side - Scratch(es) - No deduction

The vehicle shows signs of wear and tear commensurate with its age and use.

Missing parts

Description

Documents - Log book

Equipment - Tirefit complete

Order/Scope of Order

An order was placed to prepare a sales report for the described vehicle. This report includes the following:

- Description of key vehicle information
- Documentation of equipment features
(*Delivery by third-party service providers*)
- Documentation of damage, defects, missing parts
- Documentation of prior damage, unrepaired prior damage, repainting
- A brief visual or functional inspection of the equipment details, if possible.
(*Functional testing of driver assistance systems is not included in the scope of services!*)
- a photographic documentation of the vehicle



Basis for the order

This product is based on the guidelines for vehicle returns and valuations published by Alphabet Fleet GmbH. The expert makes the specific findings in each individual case objectively, within the framework of the prescribed standards, based on their own expertise.

The vehicle inspection takes place in a fully assembled, unassembled state.

Damage or defects that can only be detected during disassembly/diagnostic work or through further investigation remain within the realm of prognostic risk. An increased risk exists due to concealed defects caused by fraudulent misrepresentation and which were not identifiable by the expert.

Damage or defects resulting from normal use or wear and tear of the vehicle will be accepted in accordance with the applicable standard.

There was no explicit identification or monetary consideration of the expected features within the product.

Features which, in their nature and extent, slightly exceed normal use but do not constitute unacceptable damage, will be documented and indicated as signs of wear, if applicable.

Damage or defects that, according to the applicable standard, can no longer be attributed to normal use or wear and tear are listed under "Value Reducing Factors" in the product description.

Depending on the product specification, a monetary ID can be provided. If this takes place, the costs can be 100% d or pro rata depending on the vehicle's age and mileage.

Previous damages

No apparent prior damage that had been repaired could be found on the vehicle.

Comments

-Der montierte Winterradsatz ist kein Bestandteil des Auslieferungsumfangs.



Figure 1: Diagonal front (left)



Figure 2: Diagonal front (right)



Figure 3: Diagonal rear (left)



Figure 4: Diagonal rear (right)



Figure 5: Interior - front



Figure 6: Interior - rear



Figure 7: Instrument cluster



Figure 8: Instrument panel



Figure 9: Interior 360° view



Figure 10: Cargo area

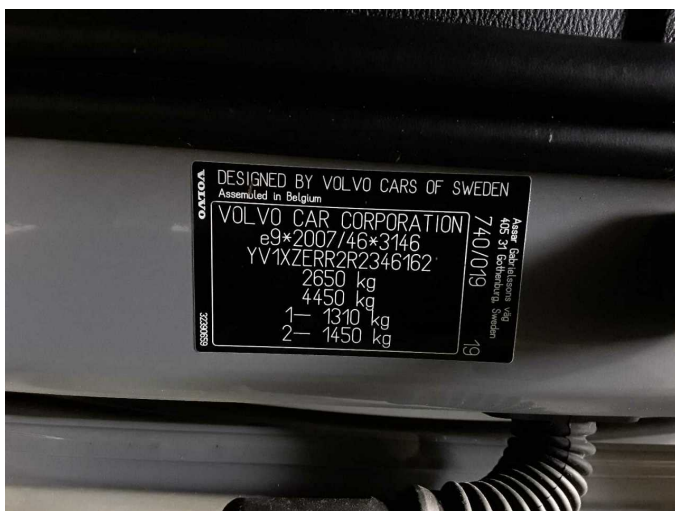


Figure 11: VIN



Figure 12: Mounted tyres

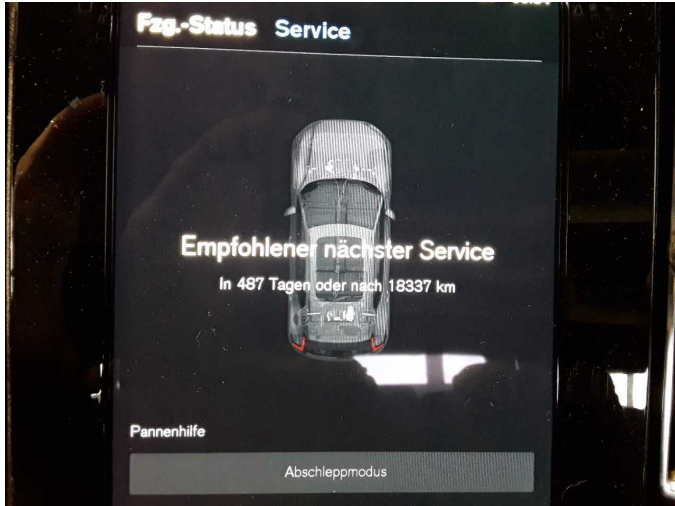


Figure 13: Documents



Figure 14: Documents

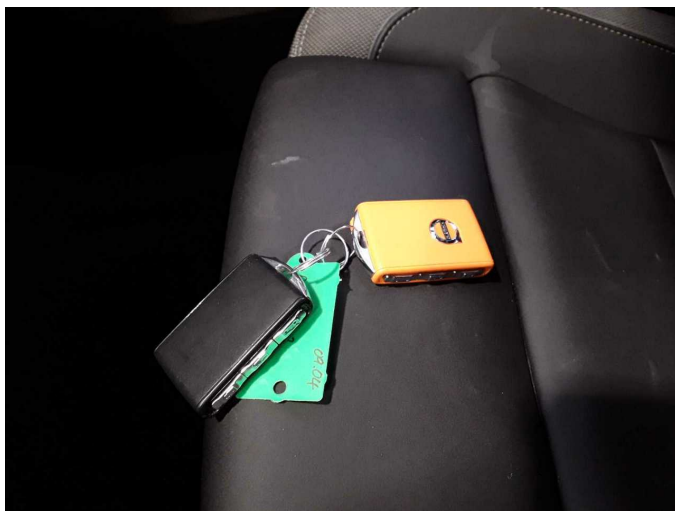


Figure 15: Documents



Figure 16: Additional tyres

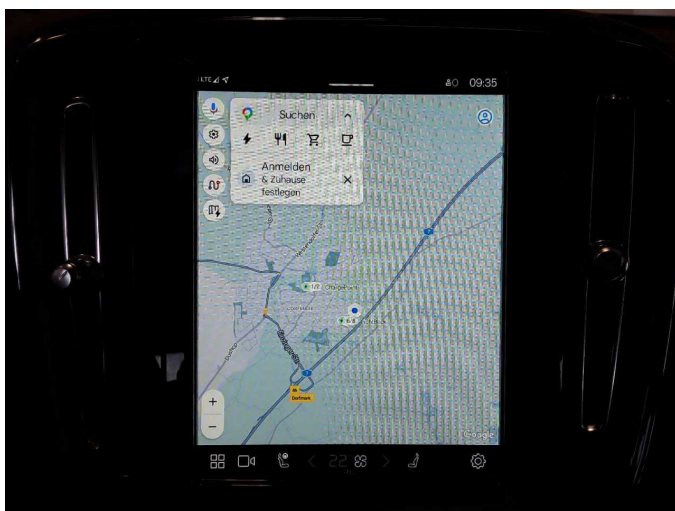


Figure 17: Navigation



Figure 18: Misc.



Figure 19: Misc.



Figure 20: Misc.



Figure 21: Misc.



Figure 22: Misc.

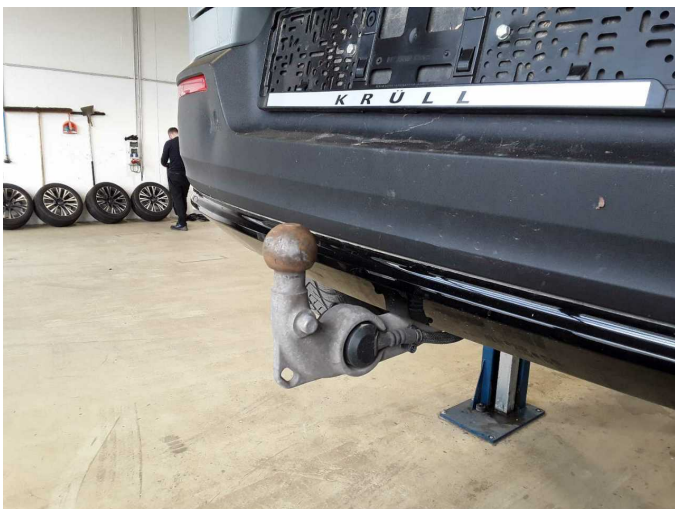


Figure 23: Misc.

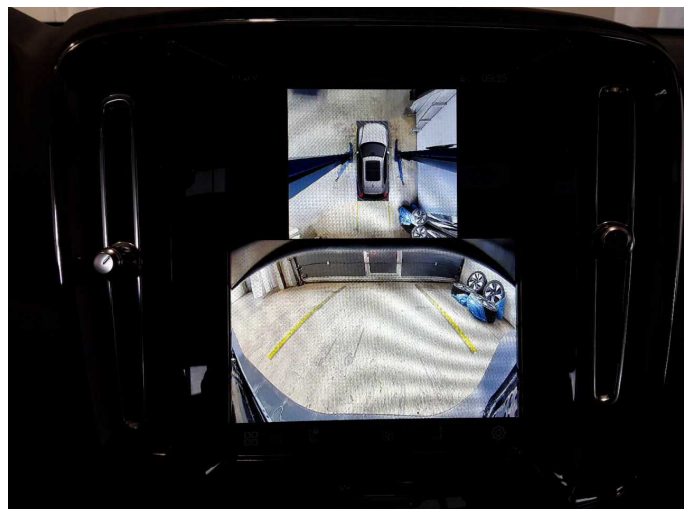


Figure 24: Misc.



Figure 25: Misc.



Figure 26: Misc.



Figure 27: Misc.



Damage 3: Rear bumper: Bumper - rear left side - Scratch(es) - Smart repair



Damage 3: Rear bumper: Bumper - rear left side - Scratch(es) - Smart repair



Damage 4: Rear bumper: Bumper - rear right side - Scratch(es) - Smart repair



Damage 4: Rear bumper: Bumper - rear right side - Scratch(es) - Smart repair



Damage 5: Rear bumper: Spoiler - Deformed - Replace



Damage 5: Rear bumper: Spoiler - Deformed - Replace



Damage 5: Rear bumper: Spoiler - Deformed - Replace