

Expertise

Protocol number: 45650731
Order No. / Reference: 26438753
Inspection date: 28 May 2026

Manufacturer: Skoda

Model: Kodiaq 2.0 TDI DSG Sportline

VIN: TMBJJ7NS0P8030602



Vehicle details

Manufacturer / Type / Model / Equipment

Skoda Kodiaq 2.0 TDI DSG Sportline

Vehicle Identification number TMBJJ7NS0P8030602

Mileage (Read) 193,152 km

First registration 7 Feb 2023

Number of holders 1

Power / Engine displacement 110 kw / 1,968 ccm

Fuel type / Cylinder Diesel / 4

Gearbox / Number of gears Automatic / 7

Type of drive Front drive

Type of vehicle SUV

Colour / colour code Brilliant-Silber Metallic

Doors / Seats 5 / 5

Upholstery type Leather

Colour of upholstery Black-Anthracite



Vehicle details

Maintenance booklet / proof	Non-existent	Next maintenance in	1,400 km
Key is / should be	2 / 2	FZG documents	ZB#2 (B) was available (copy), ZB#1 (S) was not available.
		Letter No.	GQ535781
Previous damage / Accident	None detectable	Repainting	Detectable
Inspection conditions	sufficient	Lifting equipment / pit	yes
Test drive	Not performed	Engine function test	Performed
Manufacturer key number/ type code number	8004 / ART 03925		
Emission standard	EURO6;WLTP;AP;PI/CI; M, N1 I	fine dust sticker	
Permitted total weight	2,360 kg	Empty weight	

Tyres

Mounted tyres

#	Tyre size	Type of tyre	Manufacturer	Tread depth
1)	215/65 R17 99H	Winter tyres on Light alloy	Pirelli	4mm / 4mm
2)	215/65 R17 99H	Winter tyres on Light alloy	Continental	5mm / 5mm

Additional tyres

#	Tyre size	Type of tyre	Manufacturer	Tread depth
1)	235/50 R19 99V	Summer tyres on Light alloy	Hankook	4mm / 4mm
2)	235/50 R19 99V	Summer tyres on Light alloy	Hankook	4mm / 4mm

Replacement

Typ	Tyre size	Type of tyre	Manufacturer	Tread depth
Tirefit		Expiration date 10/2026		

Legend: Tread depth information for the left tire is listed first, for the right tire it is listed second on the axle in the direction of travel.



Equipment

Standard equipment

- 12V socket in the center console and in the trunk
- Storage compartments behind the wheel arches in the trunk
- Airbag, driver's knee airbag
- Airbag, front side airbags
- Anti-lock braking system (ABS)
- Dashboard in black / black, door trim in black with microfiber inlay
- Electrically adjustable and heated exterior mirrors with integrated side indicators
- Care Connect: Proactive services (10-year term)
- Roof rails, black
- Diesel particulate filter
- Tachometer
- Easy Start (start-stop button)
- Electronic parking brake including auto-hold function
- ESC Electronic Stability Control
- Driving profile selection
- Electric windows front and rear
- High Beam Assist (Light Assist)
- front and rear floor mats
- Front and rear footwell lighting
- Cruise control
- Tinted windows
- Isofix anchorage on the outer rear seats including top tether
- LED ambient lighting
- LED matrix headlights and dynamic high beam assist (Light Assist)
- Steering wheel: Sport leather steering wheel with multifunction buttons including paddle shifters.
- Front center armrest, including storage compartment
- Multi-collision brake
- Stainless steel pedal design
- Radio accessories: 8 speakers
- Radio accessories: Wireless SmartLink
- Wheels: 19" alloy wheels Triglav anthracite polished
- Heated windshield washer nozzles, front
- Headlights washer / wiper system
- Kodiaq seat belts
- Seats: Adjustable lumbar support in the front seats
- Seats: Height-adjustable front seats
- Seats: Remote release of the rear seat backrests (2nd row) in the boot
- Speed limiter
- Bumpers painted in body color
- Telephone: Convenient hands-free telephone system including phone box
- Lashing eyes in the trunk
- Central locking with remote control
- Storage compartment on the left wheel arch
- front aero windshield wipers
- Airbag, driver and passenger
- Airbag, head airbags
- Allergen filter
- Traction control (ASR)
- Electrically folding exterior mirrors including interior and driver's side mirrors with automatic dimming
- Hill start assist
- Hydraulic brake assist (HBA)
- Black headliner
- Dark Carbon decorative inlay
- Digital Cockpit (8")
- Third brake light
- eCall
- Electronic transverse differential lock (XDS+)
- Driving light assistant and rain sensor
- Chassis: Adaptive chassis DCC including driving profile selection
- Front radar assistant including city emergency braking function with pedestrian detection
- Closed storage compartment on the driver's side
- Transmission: 7-speed dual-clutch transmission (DSG)
- Illuminated glove compartment
- Boot cover, roll-up and removable
- Front headrests are fixed, rear headrests are height-adjustable.
- LED taillights in crystal glass look with animated turn signals
- Reading lights at the front of the headliner
- Rear center armrest with cup holders
- Engine drag torque control (MSR)
- Fog lights with integrated LED daytime running lights
- Progressive steering
- Radio accessories: Digital radio reception DAB+
- Tire pressure monitoring
- Rear seat backrest split 60:40, foldable, longitudinally adjustable, backrest angle adjustable
- Electromechanical power steering
- Seats: Heated front and outer rear seats
- Seats: Electrically adjustable front seats with memory function
- Skoda Care Connect
- Sun visor on driver and passenger side with illuminated vanity mirror
- Sunset
- Front door sill trims
- Variable fastening concept in the trunk
- Immobiliser



Extra equipment

- Swiveling trailer hitch (with electric release, including trailer stabilization)
- ISOFIX preparation on the front passenger seat
- Climatronic air conditioning (3-zone) (fully automatic, separately adjustable for driver, front passenger and rear seats, including humidity sensor and odor and allergen filter)
- Front and rear parking sensors
- Upholstery: Leather interior with ventilated front seats (including manual seat extension - seat surfaces made of fine nappa leather, combined with high-quality materials)
- Rear view camera
- Traveller assistance system (DSG) (Predictive Adaptive Cruise Control pACC (control range up to 210 km/h) - Lane Assist - Adaptive Lane Guidance - Traffic Jam and Emergency Assist - Traffic Sign Recognition)
- Paint finish: Metallic / Pearl effect
- Package: Business Columbus (Sportline) (Dynamic radio navigation system Columbus - 9.2" capacitive color display - Digital Cockpit Plus (10") - Driver fatigue detection - 230V socket and a USB charging port (Type-C) on the back of the front center armrest - KESSY keyless entry - Electric tailgate operation including comfort opening - Luggage net partition - Infotainment Online (3-year subscription))

Brief expert findings

Documents submitted	At the time of the inspection, the vehicle registration certificate Part 2 (title) was available, but the vehicle registration certificate Part 1 (document) was not. (Copy)
VIN comparison	The vehicle identification number (VIN) was read from the vehicle and its conformity with the submitted documents was confirmed by the undersigned during the inspection.
Inspection	The inspection conditions were sufficient for the assessment of the vehicle. Lifting equipment and/or a pit were available for examining the vehicle.
Test drive	No test drive/shunting maneuver was carried out during the inspection of the vehicle.
Engine function test	An engine test run was performed.

Value reducing factors

No.	Component group	Description
1	Misc.	Main inspection - No evidence - No deduction
2	Misc.	Inspection / maintenance - No evidence - No deduction
3	Door - front right side	Door seal - Damaged - Replace
4	Front bumper	Front bumper - Dent / paintcoat damage - Repair and paint

Wear and tear

No.	Component group	Description
1	Vehicle glazing	Windscreen - Stone chips - No deduction

The vehicle shows signs of wear and tear commensurate with its age and use.

Repainting

No.	Repainting
1	Mudguard - left side, Mudguard - right side, Bonnet, Door - front left side, Door - front right side, Professionally carried out, Invoice of repair done Non-existent

Paint coat thickness measurement

Mudguard - left side	345 µm	Mudguard - right side	294 µm
Bonnet	381 µm	Door - front left side	259 µm
Door - front right side	294 µm		



Order/Scope of Order

An order was placed to prepare a sales report for the described vehicle. This report includes the following:

- Description of key vehicle information
- Documentation of equipment features
(Delivery by third-party service providers)
- Documentation of damage, defects, missing parts
- Documentation of prior damage, unrepaired prior damage, repainting
- A brief visual or functional inspection of the equipment details, if possible.
(Functional testing of driver assistance systems is not included in the scope of services!)
- a photographic documentation of the vehicle

Basis for the order

This product is based on the guidelines for vehicle returns and valuations published by Alphabet Fleet GmbH. The expert makes the specific findings in each individual case objectively, within the framework of the prescribed standards, based on their own expertise.

The vehicle inspection takes place in a fully assembled, unassembled state.

Damage or defects that can only be detected during disassembly/diagnostic work or through further investigation remain within the realm of prognostic risk. An increased risk exists due to concealed defects caused by fraudulent misrepresentation and which were not identifiable by the expert.

Damage or defects resulting from normal use or wear and tear of the vehicle will be accepted in accordance with the applicable standard.

There was no explicit identification or monetary consideration of the expected features within the product.

Features which, in their nature and extent, slightly exceed normal use but do not constitute unacceptable damage, will be documented and indicated as signs of wear, if applicable.

Damage or defects that, according to the applicable standard, can no longer be attributed to normal use or wear and tear are listed under "Value Reducing Factors" in the product description.

Depending on the product specification, a monetary ID can be provided. If this takes place, the costs can be 100% d or pro rata depending on the vehicle's age and mileage.

Previous damages

No apparent prior damage that had been repaired could be found on the vehicle.



Figure 1: Diagonal front (left)



Figure 2: Diagonal front (right)



Figure 3: Diagonal rear (left)



Figure 4: Diagonal rear (right)



Figure 5: Interior - front



Figure 6: Interior - rear



Figure 7: Instrument cluster



Figure 8: Instrument panel



Figure 9: Interior 360° view



Figure 10: Cargo area

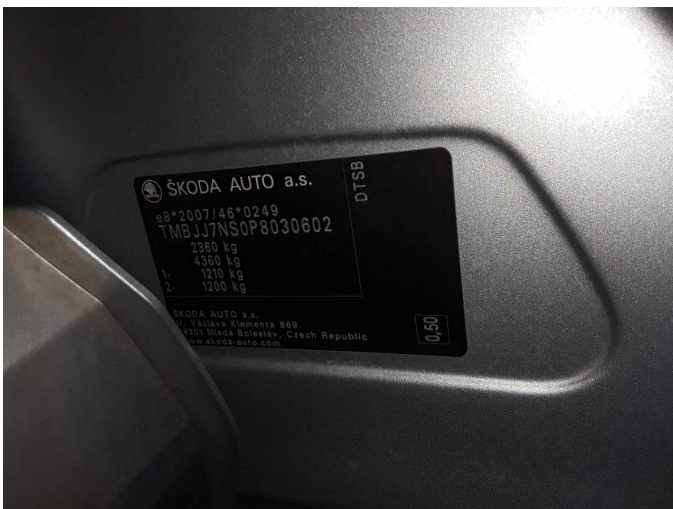


Figure 11: VIN



Figure 12: Mounted tyres



Figure 13: Documents



Figure 14: Additional tyres

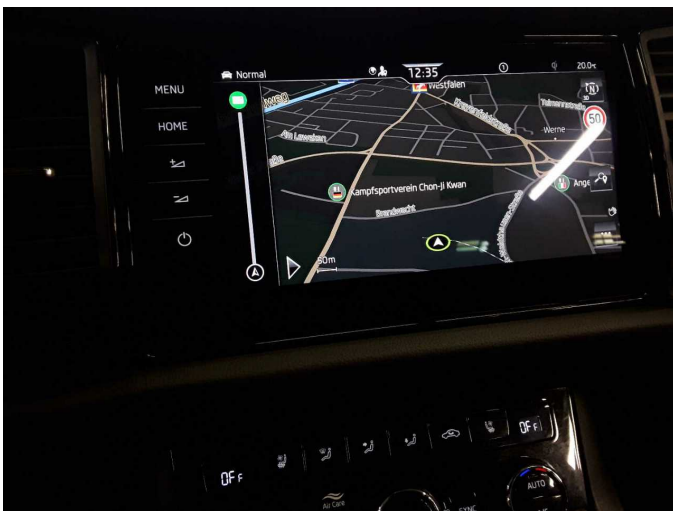


Figure 15: Navigation



Figure 16: Misc.



Figure 17: Misc.

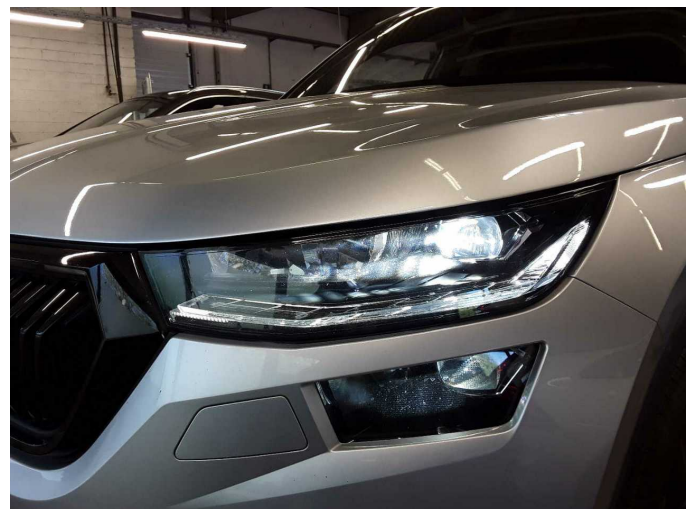


Figure 18: Misc.



Figure 19: Misc.



Figure 20: Misc.



Figure 21: Misc.



Figure 22: Misc.



Figure 23: Misc.



Figure 24: Misc.



Figure 25: Misc.



Figure 26: Misc.



Figure 27: Misc.



Figure 28: Misc.

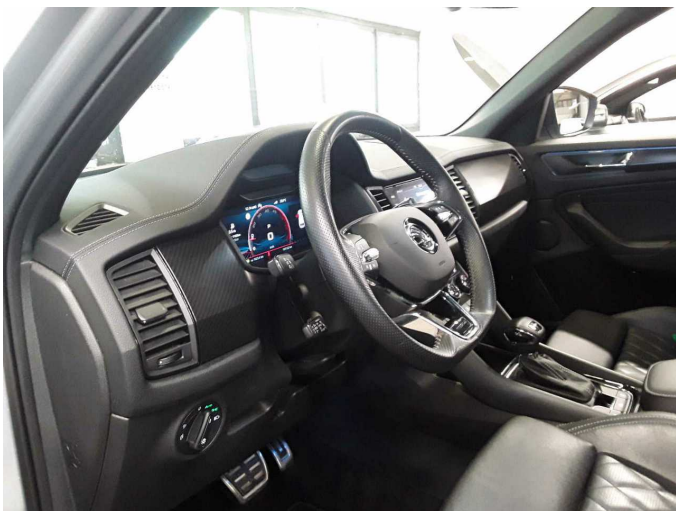


Figure 29: Misc.

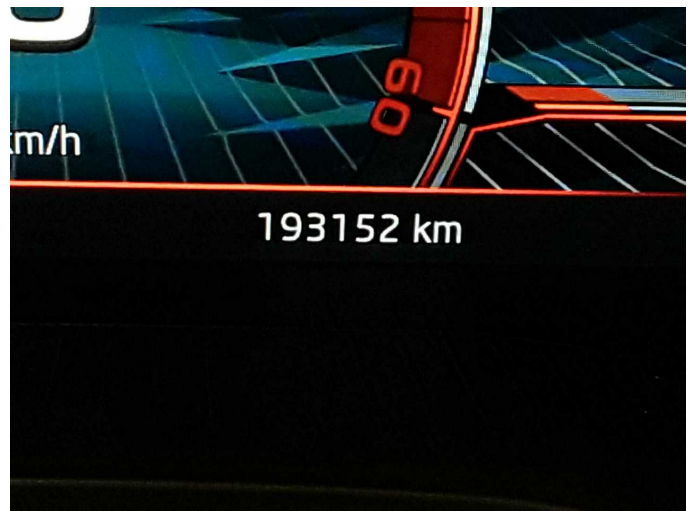


Figure 30: Misc.



Figure 31: Misc.



Figure 32: Misc.

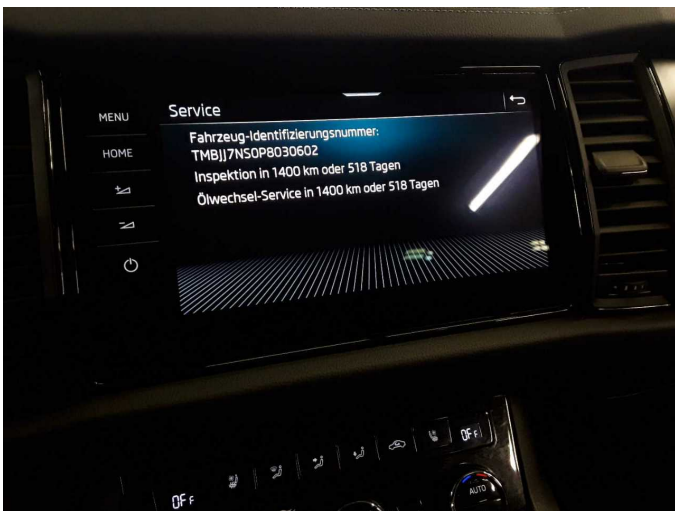


Figure 33: Misc.



Damage 3: Door - front right side: Door seal - Damaged - Replace



Damage 3: Door - front right side: Door seal - Damaged - Replace



Damage 4: Front bumper: Front bumper - Dent / paintcoat damage - Repair and paint



Damage 4: Front bumper: Front bumper - Dent / paintcoat damage - Repair and paint



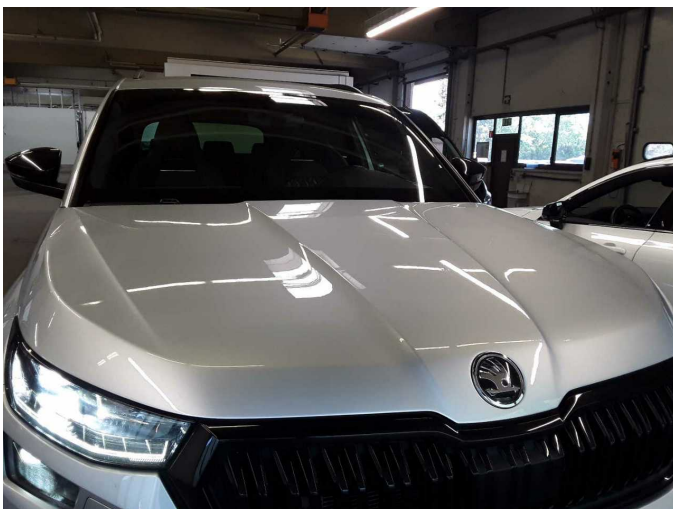
Damage 4: Front bumper: Front bumper - Dent / paintcoat damage - Repair and paint



Damage 4: Front bumper: Front bumper - Dent / paintcoat damage - Repair and paint



Repainting 1: Mudguard - left side, Mudguard - right side, Bonnet, Door - front left side, Door - front right side



Repainting 1: Mudguard - left side, Mudguard - right side, Bonnet, Door - front left side, Door - front right side



Repainting 1: Mudguard - left side, Mudguard - right side, Bonnet, Door - front left side, Door - front right side



Repainting 1: Mudguard - left side, Mudguard - right side, Bonnet, Door - front left side, Door - front right side



Repainting 1: Mudguard - left side, Mudguard - right side, Bonnet, Door - front left side, Door - front right side



Repainting 1: Mudguard - left side, Mudguard - right side, Bonnet, Door - front left side, Door - front right side



Repainting 1: Mudguard - left side, Mudguard - right side, Bonnet, Door - front left side, Door - front right side



Repainting 1: Mudguard - left side, Mudguard - right side, Bonnet, Door - front left side, Door - front right side



Repainting 1: Mudguard - left side, Mudguard - right side, Bonnet, Door - front left side, Door - front right side



Repainting 1: Mudguard - left side, Mudguard - right side, Bonnet, Door - front left side, Door - front right side