

Expertise

Protocol number: 46114308
Order No. / Reference: 26536732
Inspection date: 24 Jun 2026

Manufacturer: Skoda

Model: Kodiaq 2.0 TDI DSG Clever

VIN: TMBJJ9NS2N8022106



Vehicle details

Manufacturer / Type / Model / Equipment

Skoda Kodiaq 2.0 TDI DSG Clever

Vehicle Identification number TMBJJ9NS2N8022106

Mileage (Read) 78,086 km

First registration 1 Feb 2022

Number of holders 1

Next periodical technical inspection 05/2027
(Report on hand)

Power / Engine displacement 110 kw / 1,968 ccm

Fuel type / Cylinder Diesel / 4

Gearbox / Number of gears Automatic / 7

Type of drive Front drive

Type of vehicle SUV

Colour / colour code Black-Magic Perleffekt

Doors / Seats 5 / 5

Upholstery type Cloth

Colour of upholstery Black



Vehicle details

Maintenance booklet / proof	digital proof / complete	Next maintenance in	7,500 km
Last service on / at	05/2026 at 76,385 km		
Key is / should be	2 / 2	FZG documents	ZB#2 (B) was available (copy), ZB#1 (S) was not available.
		Letter No.	GG844380
Previous damage / Accident	None detectable	Repainting	None detectable
Inspection conditions	sufficient	Lifting equipment / pit	yes
Test drive	Not performed	Engine function test	Performed
Manufacturer key number/ type code number	8004 / ART 02725		
Emission standard	EURO6;WLTP;AP;PI/CI; M, N1 I	fine dust sticker	
Permitted total weight	2,350 kg	Empty weight	

Tyres

Mounted tyres				
#	Tyre size	Type of tyre	Manufacturer	Tread depth
1)	235/50 R19 99V	Summer tyres on Light alloy	Hankook	5mm / 5mm
2)	235/50 R19 103V	Summer tyres on Light alloy	Pirelli	6mm / 6mm
Additional tyres				
#	Tyre size	Type of tyre	Manufacturer	Tread depth
1)	215/65 R17 99H	Winter tyres on Light alloy	Continental	6mm / 6mm
2)	215/65 R17 99H	Winter tyres on Light alloy	Pirelli	6mm / 6mm

Legend: Tread depth information for the left tire is listed first, for the right tire it is listed second on the axle in the direction of travel.

TÜV SÜD Auto Partner GmbH
Wiesenring 2
04159 Leipzig

Inspection location
Mosolf SE & Co.KG
August-Horch-Straße 1
04519 Rackwitz



Equipment



Standard equipment

- 12V socket in the center console and in the trunk
- Storage compartments behind the wheel arches in the trunk
- Airbag, driver's knee airbag
- Airbag, front side airbags
- Anti-lock braking system (ABS)
- Dashboard in black / black, door trim in black
- Electrically folding exterior mirrors including interior and driver's side mirrors with automatic dimming
- Hill start assist
- Care Connect: Proactive services (10-year term)
- Roof rails, black
- Anti-theft alarm system
- Tachometer
- Easy Start (start-stop button)
- Electric tailgate operation with comfort opening
- Electronic transverse differential lock (XDS+)
- Driving light assistant and rain sensor
- High Beam Assist (Light Assist)
- front and rear floor mats
- Closed storage compartment on the driver's side
- Tinted windows
- Isofix anchorage on the outer rear seats including top tether
- Boot cover, roll-up and removable
- Paint finish: Solid
- LED matrix headlights and dynamic high beam assist (Light Assist)
- Steering wheel: Leather steering wheel with multifunction buttons including paddle shifters.
- Reading lights at the front of the headliner
- Front center armrest, including storage compartment
- Engine drag torque control (MSR)
- Multi-collision brake
- Package: Family
- Front and rear parking sensors
- Wheel arch cover
- Radio accessories: 8 speakers
- Radio accessories: SmartLink
- Tire pressure monitoring
- Wheels: RunFlat tires with Seal technology
- Heated windshield washer nozzles, front
- Headlights washer / wiper system
- Kodiaq seat belts
- Seats: Adjustable lumbar support in the front seats
- Skoda Care Connect
- Sun visor on driver and passenger side with illuminated vanity mirror
- Tablet holder in the rear
- Front door sill trims
- Variable fastening concept in the trunk
- Immobiliser
- Storage compartment on the left wheel arch
- front aero windshield wipers
- Airbag, driver and passenger
- Airbag, head airbags
- Allergen filter
- Traction control (ASR)
- Traveller Plus Assistance System (DSG)
- Electrically adjustable and heated exterior mirrors with integrated side indicators
- Hydraulic brake assist (HBA)
- Grey headliner
- CLEVER decorative inlay
- Diesel particulate filter
- Third brake light
- eCall
- Electronic parking brake including auto-hold function
- ESC Electronic Stability Control
- Electric windows front and rear
- Front radar assistant including city emergency braking function with pedestrian detection
- Transmission: 7-speed dual-clutch transmission (DSG)
- Illuminated glove compartment
- Kessy - keyless entry and start-stop system
- Climatronic air conditioning (2-zone)
- Front and rear headrests are height-adjustable.
- LED ambient lighting
- LED taillights in crystal glass look & LED license plate lights
- Steering wheel: Sport leather steering wheel with multifunction buttons including paddle shifters.
- Rear center armrest with cup holders and pass-through option
- Multifunction display in the instrument cluster, color
- Fog lights with integrated LED daytime running lights
- Parking assist
- Upholstery: Cloth
- Radio: Amundsen infotainment system (Clever)
- Radio accessories: Digital radio reception DAB+
- Radio accessories: Wireless SmartLink
- Wheels: 19" Aronia AERO Platinum alloy wheels
- Rear seat backrest split 60:40, foldable, longitudinally adjustable, backrest angle adjustable
- Electromechanical power steering
- Seats: Heated front and outer rear seats
- Seats: Height-adjustable front seats
- Skoda Infotainment Online
- Sunshade roller blind for the rear side windows
- Sunset
- Telephone: Convenient hands-free telephone system including phone box
- Lashing eyes in the trunk
- Central locking with remote control



Extra equipment

- Trailer hitch preparation (including trailer stabilization)
- Paint finish: Metallic / Pearl effect
- Package: Business Columbus (Clever) (Columbus dynamic radio navigation system - Capacitive 9.2" color display - Digital instrument cluster (virtual cockpit) - 230 V socket and USB port (Type-C) - Acoustic glazing in the front doors - Luggage net partition - Infotainment Online (3-year subscription))
- Proactive occupant protection including rear side airbags
- Variable loading floor in the trunk
- Climatronic air conditioning (3-zone) (fully automatic, separately adjustable for driver, front passenger and rear seats)
- Package: Sleeping package (Outer headrests in the 2nd row of seats with sleeping function - sleeping blanket - Lounge Step comfort floor mats)
- Electric panoramic sunroof including sunshade (no glasses compartment in the headliner)
- 360° surround view camera (area view) including reversing camera

Brief expert findings

Documents submitted	At the time of the inspection, the vehicle registration certificate Part 2 (title) was available, but the vehicle registration certificate Part 1 (document) was not. (Copy)
VIN comparison	The vehicle identification number (VIN) was read from the vehicle and its conformity with the submitted documents was confirmed by the undersigned during the inspection.
Inspection	The inspection conditions were sufficient for the assessment of the vehicle. Lifting equipment and/or a pit were available for examining the vehicle.
Test drive	No test drive/shunting maneuver was carried out during the inspection of the vehicle.
Engine function test	An engine test run was performed.

Value reducing factors

No.	Component group	Description
1	Vehicle glazing	Rear window - Scratch(es) - Loss in value
2	Side panel - rear left side	Side panel - Scratch(es) - Smart repair
3	Side panel - rear right side	Side panel - Scratch(es) - Smart repair
4	Vehicle glazing	Door glass - front right side - Scratch(es) - Replace
5	Door - rear left side	Door - Scratched - Repair and paint
6	Door - rear right side	Door - Scratch(es) - Repair and paint
7	Door - front right side	Door - Scratch(es) - Repair and paint
8	Boot lid / rear door	Boot lid - Dent / paintcoat damage - Repair and paint

Missing parts

Description

Equipment - Tirefit filler

Order/Scope of Order

An order was placed to prepare a sales report for the described vehicle. This report includes the following:

- Description of key vehicle information
- Documentation of equipment features
(*Delivery by third-party service providers*)
- Documentation of damage, defects, missing parts
- Documentation of prior damage, unrepaired prior damage, repainting
- A brief visual or functional inspection of the equipment details, if possible.
(*Functional testing of driver assistance systems is not included in the scope of services!*)
- a photographic documentation of the vehicle



Basis for the order

This product is based on the guidelines for vehicle returns and valuations published by Alphabet Fleet GmbH. The expert makes the specific findings in each individual case objectively, within the framework of the prescribed standards, based on their own expertise.

The vehicle inspection takes place in a fully assembled, unassembled state.

Damage or defects that can only be detected during disassembly/diagnostic work or through further investigation remain within the realm of prognostic risk. An increased risk exists due to concealed defects caused by fraudulent misrepresentation and which were not identifiable by the expert.

Damage or defects resulting from normal use or wear and tear of the vehicle will be accepted in accordance with the applicable standard.

There was no explicit identification or monetary consideration of the expected features within the product.

Features which, in their nature and extent, slightly exceed normal use but do not constitute unacceptable damage, will be documented and indicated as signs of wear, if applicable.

Damage or defects that, according to the applicable standard, can no longer be attributed to normal use or wear and tear are listed under "Value Reducing Factors" in the product description.

Depending on the product specification, a monetary ID can be provided. If this takes place, the costs can be 100% d or pro rata depending on the vehicle's age and mileage.

Previous damages

No apparent prior damage that had been repaired could be found on the vehicle.



Figure 1: Diagonal front (left)



Figure 2: Diagonal front (right)



Figure 3: Diagonal rear (left)



Figure 4: Diagonal rear (right)

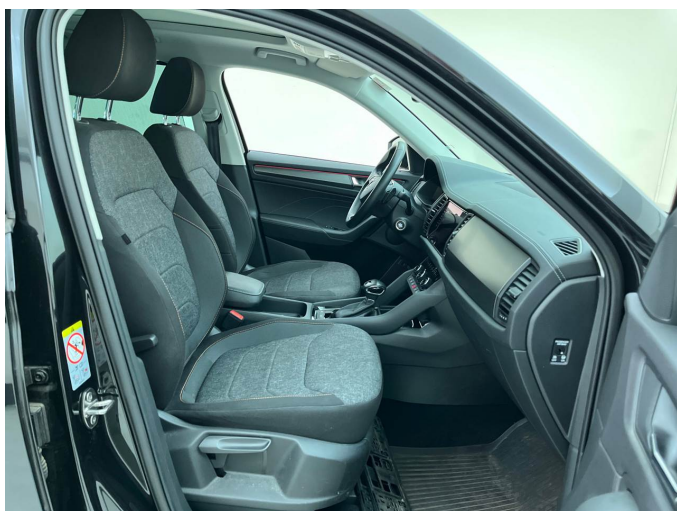


Figure 5: Interior - front



Figure 6: Interior - rear



Figure 7: Instrument cluster



Figure 8: Instrument panel



Figure 9: Interior 360° view



Figure 10: Cargo area

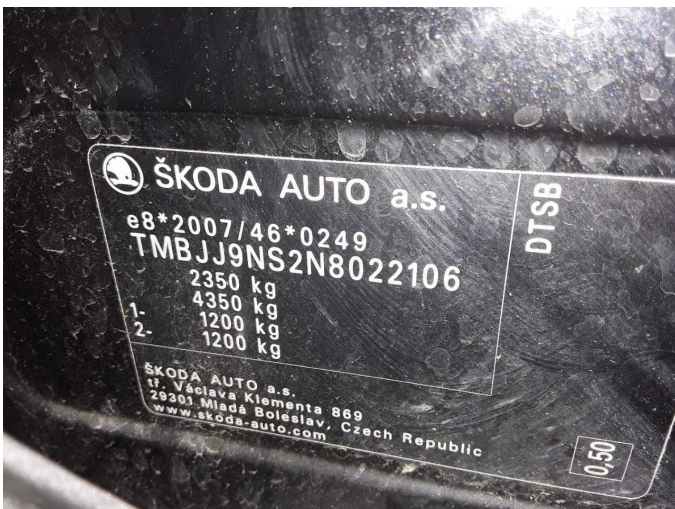


Figure 11: VIN



Figure 12: Mounted tyres



Figure 13: Documents



Figure 14: Documents

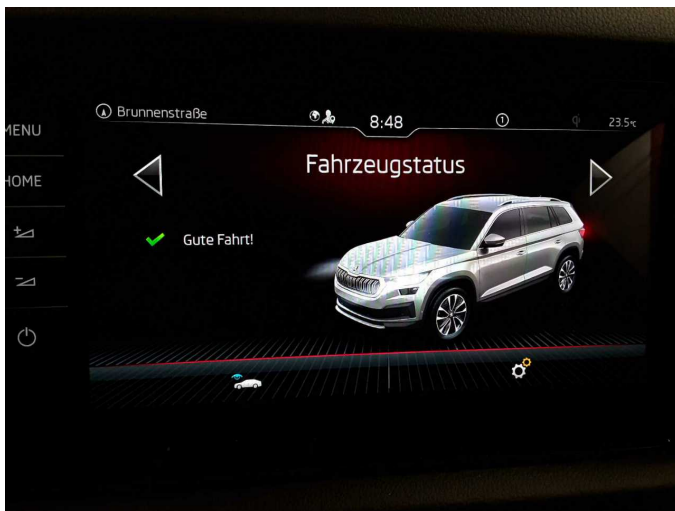


Figure 15: Documents

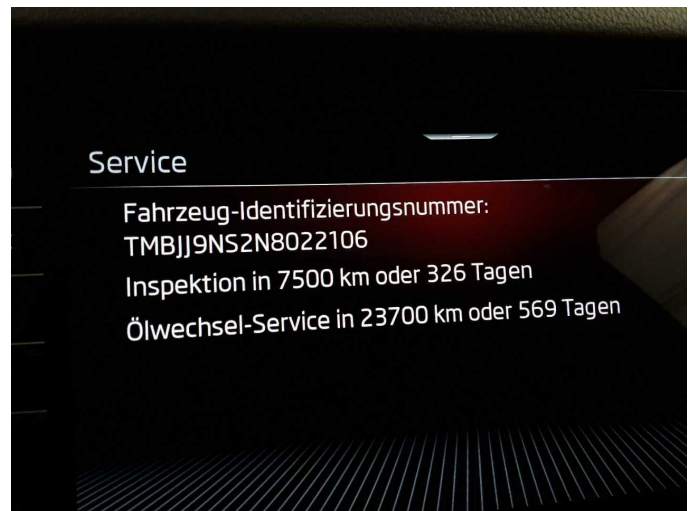


Figure 16: Documents



Figure 17: Documents



Figure 18: Additional tyres

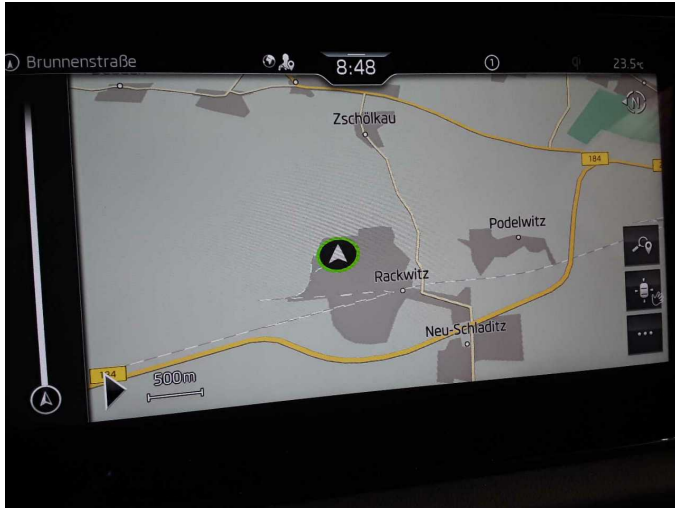


Figure 19: Navigation



Figure 20: Misc.



Figure 21: Misc.

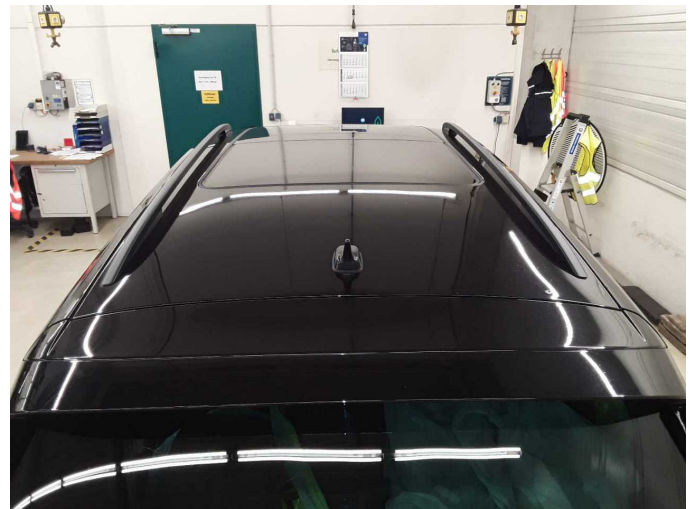


Figure 22: Misc.



Figure 23: Misc.



Figure 24: Misc.



Figure 25: Misc.



Figure 26: Misc.

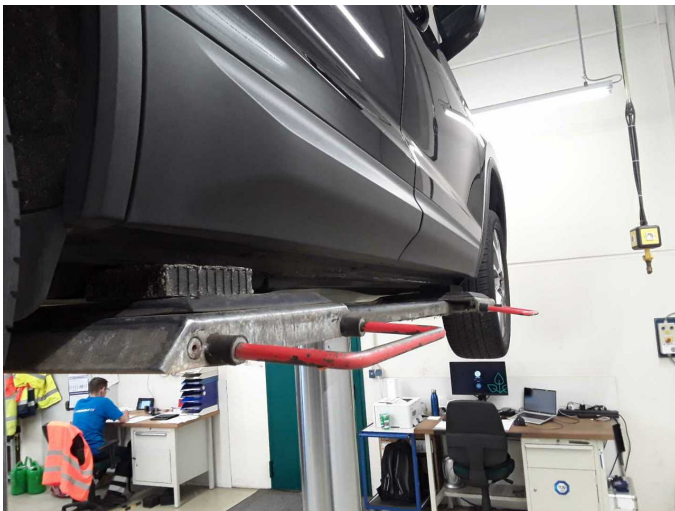


Figure 27: Misc.

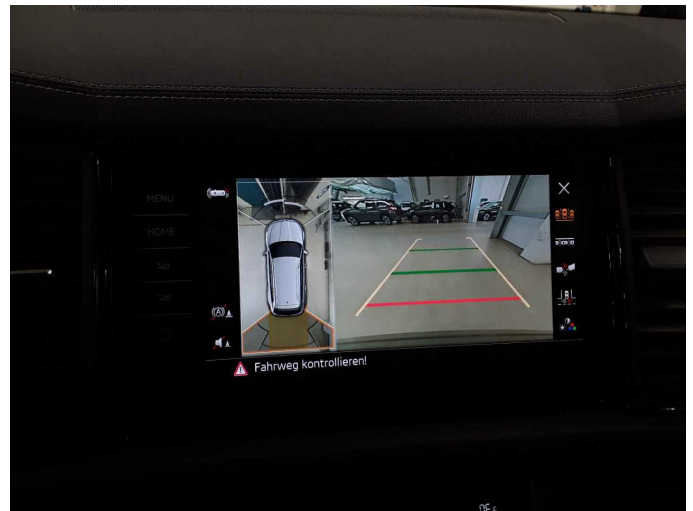


Figure 28: Misc.



Figure 29: Misc.



Figure 30: Misc.



Figure 31: Misc.



Figure 32: Misc.



Figure 33: Misc.

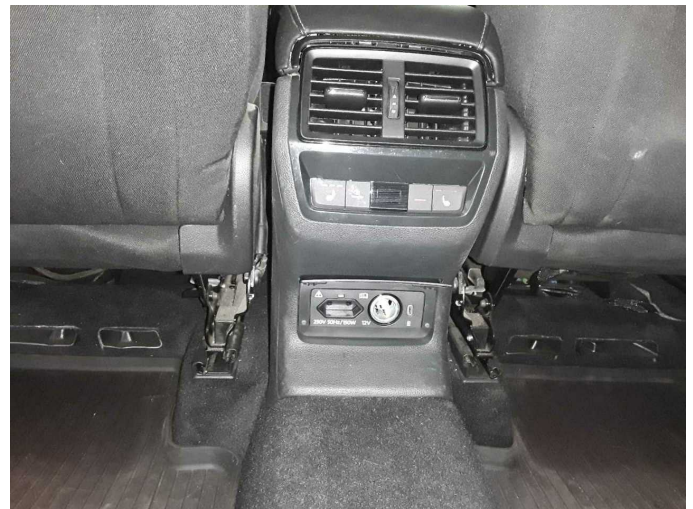


Figure 34: Misc.



Figure 35: Misc.



Damage 1: Vehicle glazing: Rear window - Scratch(es) - Loss in value



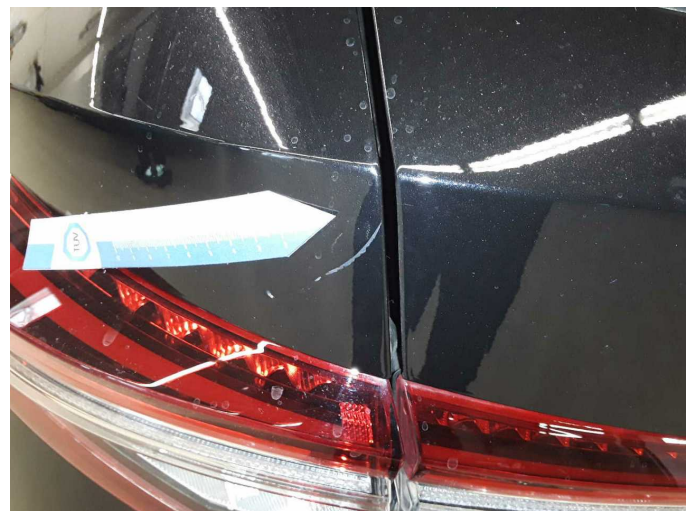
Damage 1: Vehicle glazing: Rear window - Scratch(es) - Loss in value



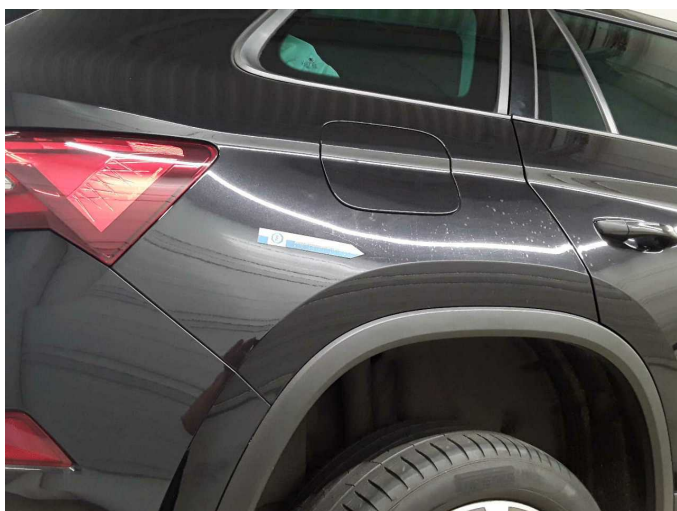
Damage 1: Vehicle glazing: Rear window - Scratch(es) - Loss in value



Damage 2: Side panel - rear left side: Side panel - Scratch(es) - Smart repair



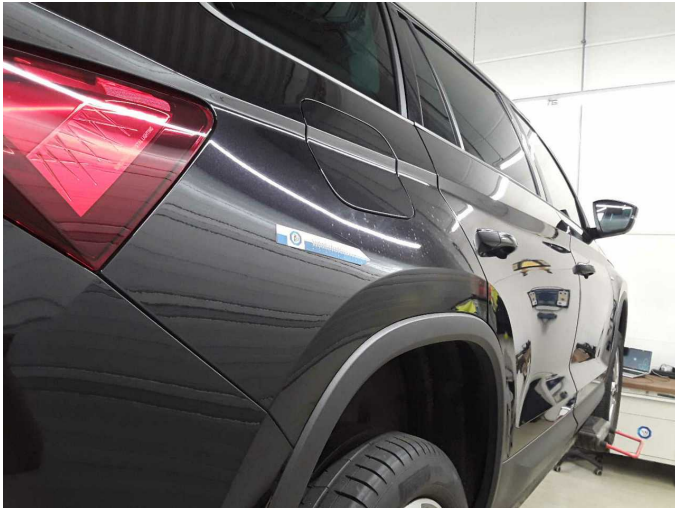
Damage 2: Side panel - rear left side: Side panel - Scratch(es) - Smart repair



Damage 3: Side panel - rear right side: Side panel - Scratch(es) - Smart repair



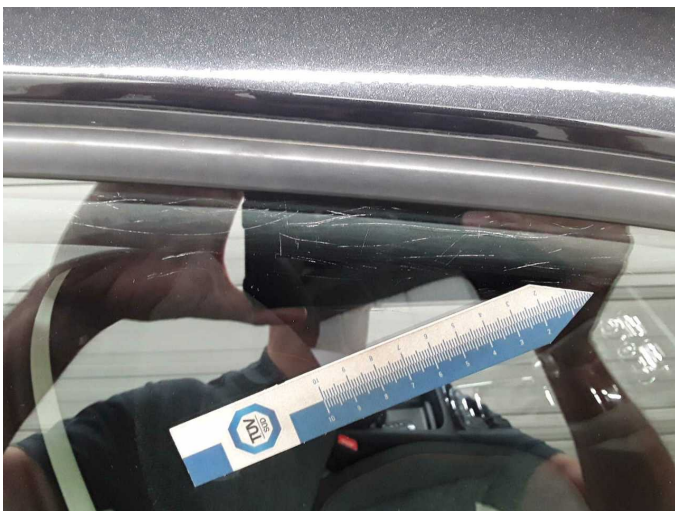
Damage 3: Side panel - rear right side: Side panel - Scratch(es) - Smart repair



Damage 3: Side panel - rear right side: Side panel - Scratch(es) - Smart repair



Damage 4: Vehicle glazing: Door glass - front right side - Scratch(es) - Replace



Damage 4: Vehicle glazing: Door glass - front right side - Scratch(es) - Replace



Damage 4: Vehicle glazing: Door glass - front right side - Scratch(es) - Replace



Damage 5: Door - rear left side: Door - Scratched - Repair and paint



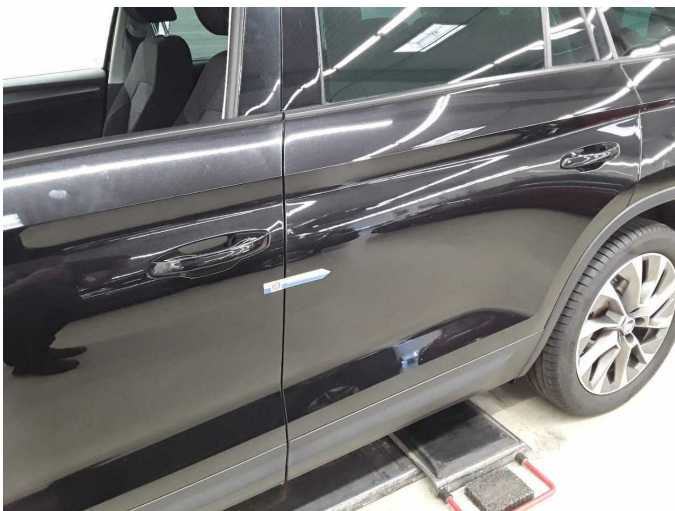
Damage 5: Door - rear left side: Door - Scratched - Repair and paint



Damage 5: Door - rear left side: Door - Scratched - Repair and paint



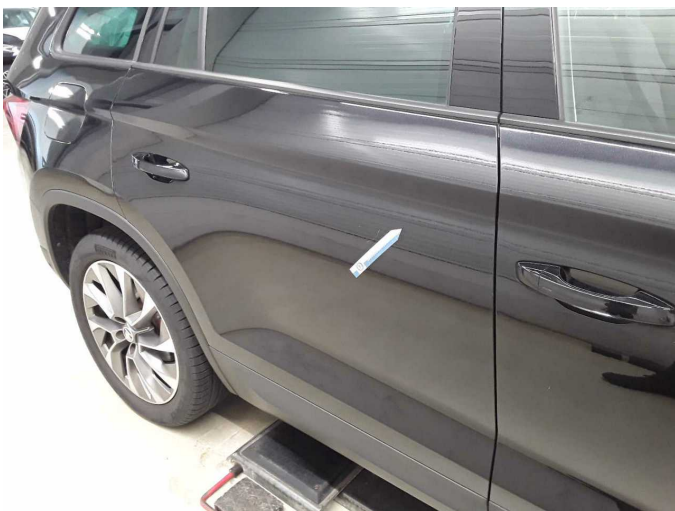
Damage 5: Door - rear left side: Door - Scratched - Repair and paint



Damage 5: Door - rear left side: Door - Scratched - Repair and paint



Damage 6: Door - rear right side: Door - Scratch(es) - Repair and paint



Damage 6: Door - rear right side: Door - Scratch(es) - Repair and paint



Damage 7: Door - front right side: Door - Scratch(es) - Repair and paint



Damage 7: Door - front right side: Door - Scratch(es) - Repair and paint



Damage 7: Door - front right side: Door - Scratch(es) - Repair and paint



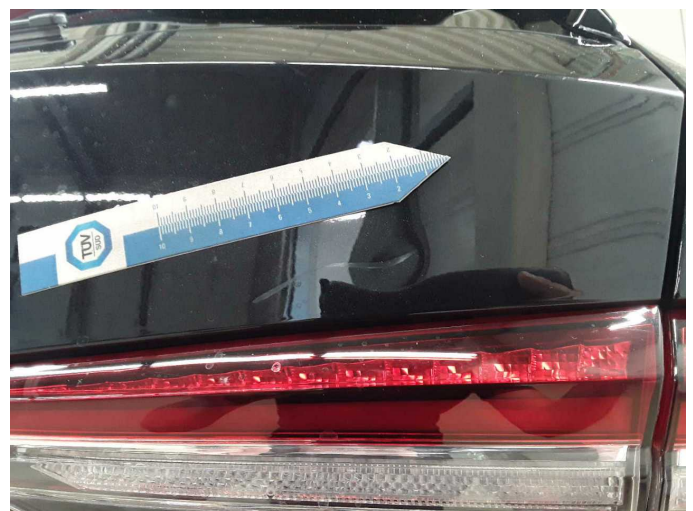
Damage 7: Door - front right side: Door - Scratch(es) - Repair and paint



Damage 8: Boot lid / rear door: Boot lid - Dent / paintcoat damage - Repair and paint



Damage 8: Boot lid / rear door: Boot lid - Dent / paintcoat damage - Repair and paint



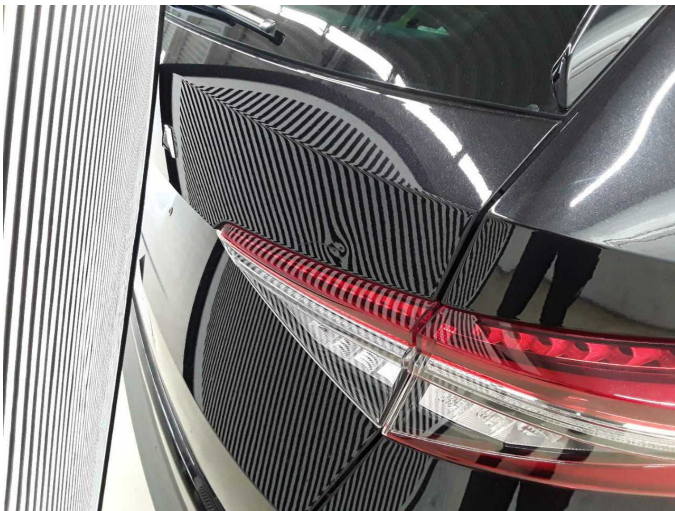
Damage 8: Boot lid / rear door: Boot lid - Dent / paintcoat damage - Repair and paint



Damage 8: Boot lid / rear door: Boot lid - Dent / paintcoat damage - Repair and paint



Damage 8: Boot lid / rear door: Boot lid - Dent / paintcoat damage - Repair and paint



Damage 8: Boot lid / rear door: Boot lid - Dent / paintcoat damage - Repair and paint



Wartungshistorie

(gemäß Auftraggeber Informationen)

Fahrgestellnummer: TMBJJ9NS2N8022106
Hersteller / Modell: SKODA SKODA Kodiaq 2.0 TDI DSG Clever

Datum	KM-Stand	Beschreibung
08.05.2026	76.385	Batterie ern; Bremsflüssigkeit; Bremsflüssigkeit ern; Motoröl b. Wartung; Ölfilter ern; Ölwechsel; Systemtest/Eigendiagnose; Wartung Sonstiges
20.05.2025	55.530	Bremse Sonstiges; Bremsklötze hinten; Bremsklötze vorne; Bremsscheiben hinten; Bremsscheiben vorne; HU + AU; Motoröl b. Wartung; Ölfilter ern; Regelwartungsdienst; Wartung Sonstiges
20.06.2024	39.820	Bremsflüssigkeit; Bremsflüssigkeit ern; Motoröl b. Wartung; Ölfilter ern; Ölwechsel; Wartung Sonstiges
12.12.2023	30.049	Regelwartungsdienst; Wartung Sonstiges
01.06.2023	19.288	Motoröl b. Wartung; Ölfilter ern; Ölwechsel; Wartung Sonstiges