

Expertise

Protocol number: 46240428
Order No. / Reference: 26621897
Inspection date: 29 Jun 2026

Manufacturer: Ford

Model: Puma 1.0 EcoBoost Aut. ST-LINE X

VIN: WF02XXERK2MM88509



Vehicle details

Manufacturer / Type / Model / Equipment

Ford Puma 1.0 EcoBoost Aut. ST-LINE X

Vehicle Identification number WF02XXERK2MM88509

Mileage (Read) 110,307 km

First registration 28 May 2021

Number of holders 1

Next periodical technical inspection 05/2026

(Report not on hand)

Power / Engine displacement 92 kw / 999 ccm

Fuel type / Cylinder Petrol / 3

Gearbox / Number of gears Automatic / 7

Type of drive Front drive

Type of vehicle Saloon car

Colour / colour code Frost-Weiß

Doors / Seats 5 / 5

Upholstery type Cloth / leather combination

Colour of upholstery Black

readiness to drive Roadworthy



Vehicle details

Maintenance booklet / proof	digital proof / complete	Next maintenance in	38 %
Last service on / at	10/2025 at 101,710 km		
Key is / should be	2 / 2	FZG documents	ZB#2 (B) was available (copy), ZB#1 (S) was not available.
		Letter No.	FZ486299
Previous damage / Accident	None detectable	Repainting	None detectable
Inspection conditions	sufficient	Lifting equipment / pit	No
Test drive	Not performed	Engine function test	Performed
readiness to drive	Roadworthy		
Manufacturer key number/ type code number	8566 / BSK 00053		
Emission standard	EURO6;WLTP;AP;PI/CI; M, N1 I	fine dust sticker	
Permitted total weight	1,810 kg	Empty weight	

Tyres

Mounted tyres

#	Tyre size	Type of tyre	Manufacturer	Tread depth
1)	215/55 R17 94V	All-season tyres on Light alloy	Goodyear	7mm / 7mm
2)	215/55 R17 94V	All-season tyres on Light alloy	Goodyear	7mm / 7mm

Legend: Tread depth information for the left tire is listed first, for the right tire it is listed second on the axle in the direction of travel.

TÜV SÜD Auto Partner GmbH
Wiesenring 2
04159 Leipzig

Inspection location
Hartmann Fleet Professionals GmbH
Leerenstraße 25
29683 Bad Fallingbommel



Equipment



Standard equipment

- Ambient lighting (front including front door storage, footwell and cup holder lighting with LED technology)
- Electrically adjustable, heated and folding exterior mirrors (painted in body color - with integrated turn signals and ambient lighting)
- Body styling kit (side skirts painted in body color, with black high-gloss insert - front and rear bumpers, ST-Line design)
- 12.3-inch digital instrument panel
- Front door sill trim
- Driver information system with on-board computer
- Lane keeping assist including lane keeping assist and driver fatigue warning
- Electric front and rear windows (with quick-down function including all-around closing function)
- High Beam Assist
- Ford EcoCoach (shows the efficiency of current driving behavior)
- Ford MegaBox
- FordPower start function (keyless start)
- FordPass Connect (including eCall, live traffic information and Wi-Fi hotspot)
- Transmission: 7-speed automatic dual-clutch transmission
- Illuminated glove compartment
- Rear window wiper/washer system
- Interior lights front and rear
- Intelligent Protection System (IPS) (front airbag for driver and front passenger - front and rear head and shoulder airbags - side airbag for driver and front passenger - seat belt tensioners and force limiters for front and outer rear seats - seat belt warning system for front and second-row seats)
- LED taillights
- Steering wheel: Steering wheel, 3-spoke design, in Sensico synthetic leather
- Front center console with integrated armrest (2 cup holders - 12-volt socket)
- Ford navigation system including Ford SYNC 3 with AppLink and 8" touchscreen (Android Auto and Apple CarPlay support - DAB/DAB+ digital radio reception (Digital Audio Broadcasting) - 6 speakers - steering wheel controls - Bluetooth hands-free system and audio streaming - 2 USB ports - voice control for audio and telephone - SMS text-to-speech function - road map for Europe - Ford navigation system includes advanced voice control and voice output, detailed visualization (3D display), One Box Search)
- Upholstery: Sensico faux leather fabric upholstery in anthracite (seat back and side bolsters in Sensico faux leather)
- Radio accessories: B&O Sound System (575 Watt premium sound system with 10 speakers, including subwoofer - based on the renowned sound and design expertise of Bang & Olufsen)
- Side windows from the 2nd row of seats and rear window, dark tinted.
- Power steering (electro-mechanical, speed-dependent (EPAS - Electric Power Assisted Steering))
- Anti-lock braking system (ABS) (with electronic brake force distribution (EBD))
- Passenger airbag deactivation
- Tires: Tire repair kit (maximum speed 80 km/h when used)
- Hill start assist
- Brake Assist (EBA)
- third brake light
- Fabric headliner
- Tachometer
- Electronic Stability Program (ESP) (with Traction Control System (TCS))
- Chassis: Sport-tuned chassis
- Wrong-way driver warning function (traffic signs, e.g. no-overtaking zones or speed limits, are detected via the front camera and displayed on the on-board computer.)
- Ford Easy Fuel (Ford Easy Fuel comfort refueling system (Eliminates the need for a separate internal fuel cap and prevents misfueling by detecting the size difference between petrol and diesel nozzles. The filler neck only opens when the correct fuel is used.)
- Luggage compartment lighting
- Cruise control system (Intelligent speed limiter with speed limit display)
- Grab handles for driver and passenger side
- Heated rear window
- Inductive charging station for mobile devices
- Intelligent speed limiter with speed limit display
- ISOFIX mounts including top tether attachment points on the outer seats of the 2nd row.
- Clothes hook at the back
- Rear headrests (3) height adjustable
- Front headrests are height-adjustable
- Paint finish: Solid
- LED fog lights (including static cornering lights)
- Steering wheel: Paddle shifters on the steering wheel
- Steering column, adjustable in height and reach
- MyKey key system (individually programmable second key)
- Fatigue warning
- Emergency brake light, pulsating illumination of the brake lights during hard braking
- Otto particulate filter
- Package: Comfort (Air conditioning with automatic temperature control, activated carbon filter - Windscreen wipers with rain sensor (sensitivity adjustable) - Interior mirror, automatically dimming)
- Rear parking pilot system
- Pedal assembly with aluminum pads
- Pollen and dust filter
- Post-Collision Assist
- Pre-Collision Assist (including Forward Alert system with pedestrian and bicycle detection)
- Tire Pressure Monitoring System (TPMS)



- Seats: Passenger seat with manually adjustable lumbar support
- Seats: Driver's seat with manually adjustable lumbar support
- Seats: Front sports seats with integrated headrests
- Start-stop system
- Carpet floor mats front and rear
- Variable radiator air intake
- Lashing eyes in the luggage compartment
- Central locking with remote control

- Headlights with LED daytime running lights and LED low beam headlights
- Headlight assistant with day/night sensor
- Selective driving mode switch (settings "Normal", "Eco", "Sport", "Slippery" and "Unpaved Roads" - Depending on the selected mode, various factors such as the steering, the resistance of the accelerator pedal and the iACC basic settings are affected.)
- Seats: Passenger seat, manually adjustable
- Seats: Driver's seat, manually height-adjustable
- Seats: Rear seat backrest, foldable, 60:40 split
- Sun visors including illuminated makeup mirrors, on driver and passenger side
- Door handles painted in car color
- Traffic sign recognition system
- Immobiliser
- Two-tone horn

Extra equipment

- LED headlights for low and high beam (with LED turn signals at the front and dynamic headlight range control)
- Package: Winter (Heated windscreen - Heated leather steering wheel - Individually and variably heated front seats)
- Paint finish: Solid color, special color
- Tires: 4 all-season tires (instead of summer tires)
- Tires: Lockable wheel nuts for alloy wheels, set of 4 plus key

- Package: Driver Assistance Package (Automatic) (Intelligent adaptive cruise control with traffic sign recognition - Traffic jam assist with stop & go function - Pre-collision assist including collision warning system with pedestrian and cyclist detection - Distance display and distance warning - Evasive steering assist - Blind spot assist with emergency braking function when reversing out of parking spaces - Active parking assist with parallel and perpendicular parking function - Front parking pilot system - Rear view camera with "Split View" technology)
- Tires: 7 J x 17 alloy wheels (4) in 5-spoke design, black, diamond-turned (with 215/55 R17 tires)

Brief expert findings

Documents submitted	At the time of the inspection, the vehicle registration certificate Part 2 (title) was available, but the vehicle registration certificate Part 1 (document) was not. (Copy)
VIN comparison	The vehicle identification number (VIN) was read from the vehicle and its conformity with the submitted documents was confirmed by the undersigned during the inspection.
Inspection	The inspection conditions were sufficient for the assessment of the vehicle. No lifting equipment or pit was available for inspecting the vehicle. Therefore, inspection of the vehicle's underside was only possible to a limited extent.
Test drive	No test drive/shunting maneuver was carried out during the inspection of the vehicle.
Engine function test	An engine test run was performed.
readiness to drive	The vehicle was roadworthy at the time of inspection.

Value reducing factors

No.	Component group	Description
1	Misc.	Main inspection - No evidence - No deduction
2	Engine	Engine cover - top / cover - Damage caused by marten / rodent - Replace
3	Sill - left side	Sill - Scratch(es) - Smart repair
4	Roof	Roof (Lack platz ab) - Paint defect - Repair and paint



Wear and tear

No.	Component group	Description
1	Bonnet	Bonnet - Stone chips - No deduction
2	Mudguard - left side	Mudguard - left side - Stone chips - No deduction

The vehicle shows signs of wear and tear commensurate with its age and use.

Order/Scope of Order

An order was placed to prepare a sales report for the described vehicle. This report includes the following:

- Description of key vehicle information
- Documentation of equipment features
(Delivery by third-party service providers)
- Documentation of damage, defects, missing parts
- Documentation of prior damage, unrepaired prior damage, repainting
- A brief visual or functional inspection of the equipment details, if possible.
(Functional testing of driver assistance systems is not included in the scope of services!)
- a photographic documentation of the vehicle

Basis for the order

This product is based on the guidelines for vehicle returns and valuations published by Alphabet Fleet GmbH. The expert makes the specific findings in each individual case objectively, within the framework of the prescribed standards, based on their own expertise.

The vehicle inspection takes place in a fully assembled, unassembled state.

Damage or defects that can only be detected during disassembly/diagnostic work or through further investigation remain within the realm of prognostic risk. An increased risk exists due to concealed defects caused by fraudulent misrepresentation and which were not identifiable by the expert.

Damage or defects resulting from normal use or wear and tear of the vehicle will be accepted in accordance with the applicable standard.

There was no explicit identification or monetary consideration of the expected features within the product.

Features which, in their nature and extent, slightly exceed normal use but do not constitute unacceptable damage, will be documented and indicated as signs of wear, if applicable.

Damage or defects that, according to the applicable standard, can no longer be attributed to normal use or wear and tear are listed under "Value Reducing Factors" in the product description.

Depending on the product specification, a monetary ID can be provided. If this takes place, the costs can be 100% or pro rata depending on the vehicle's age and mileage.

Previous damages

No apparent prior damage that had been repaired could be found on the vehicle.



Figure 1: Diagonal front (left)



Figure 2: Diagonal front (right)



Figure 3: Diagonal rear (left)



Figure 4: Diagonal rear (right)



Figure 5: Interior - front



Figure 6: Interior - rear



Figure 7: Instrument cluster



Figure 8: Instrument panel



Figure 9: Interior 360° view



Figure 10: Cargo area



Figure 11: VIN



Figure 12: Mounted tyres

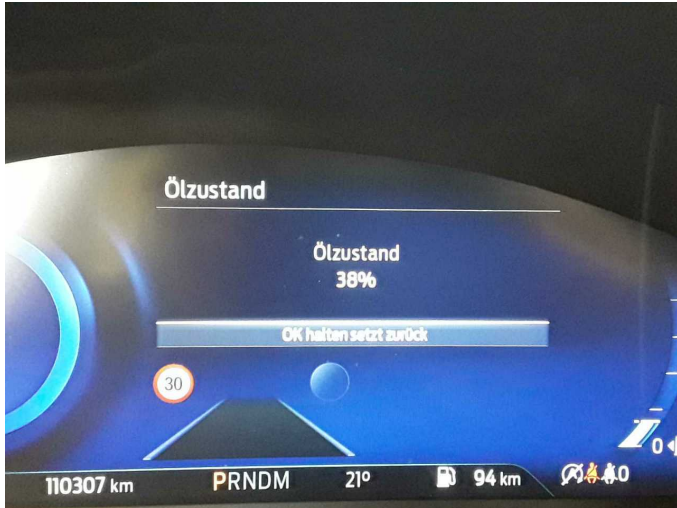


Figure 13: Documents



Figure 14: Documents

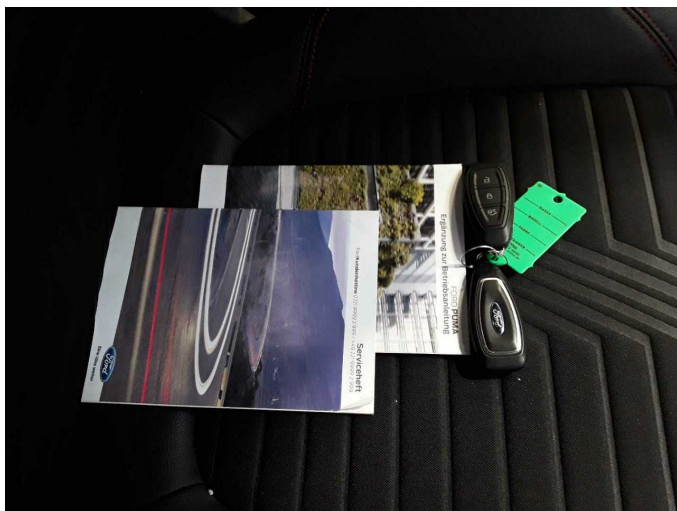


Figure 15: Documents



Figure 16: Navigation



Figure 17: Misc.



Figure 18: Misc.



Figure 19: Misc.



Figure 20: Misc.

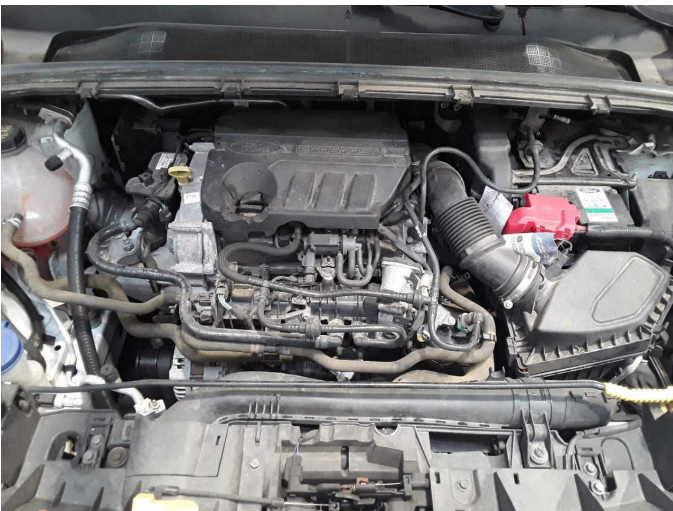


Figure 21: Misc.

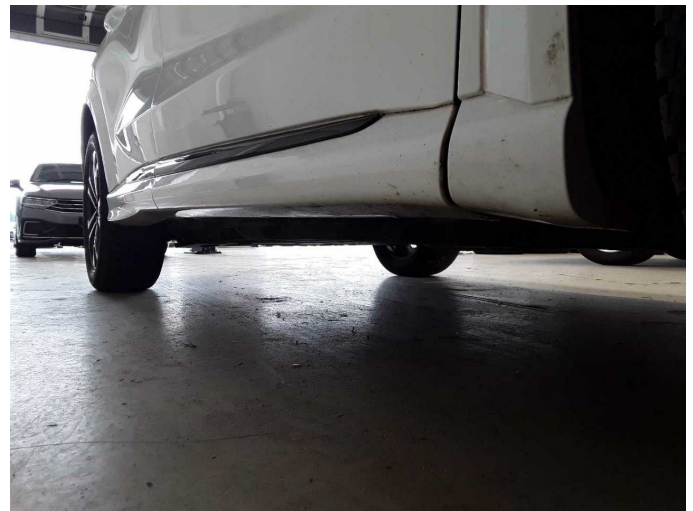
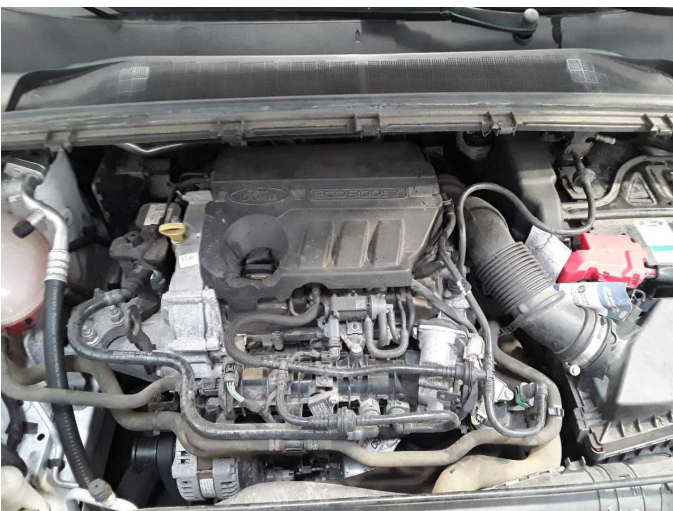


Figure 22: Misc.



Damage 2: Engine: Engine cover - top / cover - Damage caused by marten / rodent - Replace



Damage 2: Engine: Engine cover - top / cover - Damage caused by marten / rodent - Replace



Damage 3: Sill - left side: Sill - Scratch(es) - Smart repair



Damage 3: Sill - left side: Sill - Scratch(es) - Smart repair



Damage 4: Roof: Roof (Lack platzt ab) - Paint defect - Repair and paint



Damage 4: Roof: Roof (Lack platzt ab) - Paint defect - Repair and paint



Damage 4: Roof: Roof (Lack platzt ab) - Paint defect - Repair and paint



Wartungshistorie

(gemäß Auftraggeber Informationen)

Fahrgestellnummer: WF02XXERK2MM88509

Hersteller / Modell: FORD FORD Puma 1.0 EcoBoost Aut. ST-LINE X

Datum	KM-Stand	Beschreibung
30.10.2025	101.710	Bremsklötze vorne; Bremsscheiben + Klötze v; Bremsscheiben vorne; Systemtest/Eigendiagnose; Wartung Sonstiges
16.07.2025	91.800	Bremsflüssigkeit; Bremsflüssigkeit ern; Motoröl b. Wartung; Ölfilter ern; Regelwartungsdienst; Wartung Sonstiges; Wartung Sonstiges
16.09.2024	72.097	Systemtest/Eigendiagnose
08.05.2024	59.526	AU; Luftfiltereinsatz ern; Motoröl b. Wartung; Ölfilter ern; Regelwartungsdienst; Wartung Sonstiges; Zündkerzen ern
16.01.2023	30.460	Motoröl b. Wartung; Ölfilter ern; Regelwartungsdienst; Wartung Sonstiges