

Expertise

Protocol number: 45875171
 Order No. / Reference: 26562365
 Inspection date: 10 Jun 2026

Manufacturer: Ford

Model: Focus Turnier 1.5 EcoBlue Start-Stopp-System Aut. ACTIVE

VIN: WF0PXXGCHPNA25756



Vehicle details

Manufacturer / Type / Model / Equipment

Ford Focus Turnier 1.5 EcoBlue Start-Stopp-System Aut. ACTIVE

Vehicle Identification number WF0PXXGCHPNA25756

Mileage (Read) 153,270 km

First registration 15 Feb 2023

Number of holders 1

Next periodical technical inspection 02/2028

(Report on hand)

Power / Engine displacement 85 kw / 1,499 ccm

Fuel type / Cylinder Diesel / 4

Gearbox / Number of gears Automatic / 8

Type of drive Front drive

Type of vehicle Station wagon

Colour / colour code Polar-Silber Metallic

Doors / Seats 5 / 5

Upholstery type Cloth

Colour of upholstery Anthracite-Blue

Vehicle with smoke odor no



Vehicle details

Maintenance booklet / proof	digital proof / complete	Next maintenance in	45 %
Last service on / at	02/2026 at 140,986 km		
Key is / should be	2 / 2	FZG documents	ZB#2 (B) was available (copy), ZB#1 (S) was not available.
		Letter No.	GP498489
Previous damage / Accident	None detectable	Repainting	None detectable
Inspection conditions	sufficient	Lifting equipment / pit	yes
Test drive	short drive on the company premises	Engine function test	Performed
Manufacturer key number/ type code number	8566 / BYE 00003		
Emission standard	EURO6;WLTP;AP;PI/CI; M, N1 I	fine dust sticker	
Permitted total weight	2,035 kg	Empty weight	

Tyres

Mounted tyres				
#	Tyre size	Type of tyre	Manufacturer	Tread depth
1)	215/55 R17 98V	Summer tyres on Light alloy	Continental	5mm / 5mm
2)	215/55 R17 98V	Summer tyres on Light alloy	Continental	6mm / 6mm
Additional tyres				
#	Tyre size	Type of tyre	Manufacturer	Tread depth
1)	215/55 R17 94H	Winter tyres on Light alloy	Continental	3mm / 3mm
2)	215/55 R17 94H	Winter tyres on Light alloy	Continental	7mm / 7mm

Legend: Tread depth information for the left tire is listed first, for the right tire it is listed second on the axle in the direction of travel.



Equipment

Standard equipment

- Airbag: Passenger airbag deactivation
- Exterior mirrors painted in body color, electrically adjustable, heated and foldable
- Tires: 7 J x 17 alloy wheels (4) with 215/55 R 17 tires
- Hill start assist
- Fabric headliner
- Roof spoiler painted in car color
- Tachometer
- Electronic Safety and Stability Program (ESP)
- Lane keeping assist including lane keeping assist
- Chassis with increased ground clearance
- Electric parking brake with auto-hold function
- FordPass Connect including live traffic information
- Luggage compartment lighting
- Cruise control
- Illuminated glove compartment
- rear window wiper
- Interior mirror, automatically dimming
- Isofix bracket
- Headrests: 2 front and 3 rear, height adjustable
- LED taillights
- Steering wheel: 3-spoke design
- Make-up mirrors in driver and passenger sun visors
- MyKey key system (individually programmable second key)
- Emergency call assistant
- Front and rear parking pilot system
- Post-Collision Assist
- Tire repair kit
- Windscreen wipers with rain sensor (sensitivity adjustable)
- Headlight assistant with day/night sensor
- Electromechanical speed-dependent power steering
- Seats: Driver's seat height adjustable
- Seats: Front sports seats with enhanced lateral support
- 12-volt power outlet in the luggage compartment
- Variable radiator air intake
- Warning system for unfastened seat belts for the 1st and 2nd rows of seats

Extra equipment

- Paint finish: Metallic
- Package: Winter (heated windscreen - heated steering wheel - individually and variably heated front seats)
- Side windows from the 2nd row of seats and rear window, dark tinted.
- Safety partition net for luggage compartment

- Anti-lock braking system (ABS) with electronic brake force distribution (EBD)
- Attachment points behind the second row of seats for mounting the safety partition net
- Crossover body kit
- Roof rails, black
- Diesel particulate filter (DPF)
- Electronic Shifter
- Driver information system with on-board computer, color (10.7 cm screen diagonal)
- Electric windows front and rear
- Ford Power Start function
- Luggage compartment cover
- Speed limiter
- Transmission: 8-speed automatic transmission
- Back window, heater
- Interior lighting with LED technology
- Intelligent security system
- Air conditioning with automatic temperature control
- Paint finish: Solid
- LED headlights
- Adjustable steering column
- Center console "Premium" front
- Navigation: Ford SYNC 4 including Ford navigation system with AppLink, 13.2" touchscreen and DAB/DAB+
- Upholstery: Cloth
- Pre-Collision Assist
- Tire Pressure Monitoring System (TPMS)
- Headlight low beam
- Selective driving mode switch (Active)
- Seats: Passenger seat height-adjustable, manually
- Seats: Rear seat backrest
- Start-stop system
- Carpet floor mats in the front
- Lashing eyes in the luggage compartment
- Electronic immobilizer
- Central locking with remote control and remote luggage compartment release

- Package: Easy Parking (Active Parking Assist with parking and exiting function (in conjunction with 8-speed automatic transmission including semi-automated vehicle guidance) - Door edge protection - Rearview camera with "Split View" technology)



Brief expert findings

Documents submitted	At the time of the inspection, the vehicle registration certificate Part 2 (title) was available, but the vehicle registration certificate Part 1 (document) was not. (Copy)
VIN comparison	The vehicle identification number (VIN) was read from the vehicle and its conformity with the submitted documents was confirmed by the undersigned during the inspection.
Inspection	The inspection conditions were sufficient for the assessment of the vehicle. Lifting equipment and/or a pit were available for examining the vehicle.
Test drive	A short maneuvering and shunting exercise was carried out on the company premises.
Engine function test	An engine test run was performed.

Value reducing factors

No.	Component group	Description
1	Boot lid / rear door	Boot lid - Glued / labelled - De-glue / neutralise
2	Front bumper	Grille - Broken / torn - Replace
3	Rear bumper	Rear bumper - Scratched - Smart repair
4	Engine	Engine (Ölverlust-Mehrkosten möglich) - Leaking - Perform diagnosis
5	Rear bumper	Spoiler - Scratched - Replace

Wear and tear

No.	Component group	Description
1	Vehicle glazing	Windscreen - Stone chips - No deduction
2	Wing mirror - left side	Cap - Scratch(es) - No deduction
3	Door - front left side	Door - dent(s) - No deduction
4	2nd wheel set	1 alloy rim (Kein Teil der Ausstattung) - Scratched - No deduction
5	2nd wheel set	1 tyre (angefahren, Kein Teil der Ausstattung) - Broken / torn - No deduction
6	2nd wheel set	2 tyres (+ 1 Reifen Riss Reifenflanke, Kein Teil der Ausstattung) - Does not meet the leasing specifications - No deduction
7	Bonnet	Bonnet (+ Delle) - Stone chips - No deduction
8	Front bumper	Spoiler (unterhalb) - Scratched - No deduction

The vehicle shows signs of wear and tear commensurate with its age and use.

Missing parts

Description

Documents - Owner's manual
Engine - Engine cover
Equipment - Tirefit complete

Order/Scope of Order

An order was placed to prepare a sales report for the described vehicle. This report includes the following:

- Description of key vehicle information
- Documentation of equipment features
(*Delivery by third-party service providers*)
- Documentation of damage, defects, missing parts
- Documentation of prior damage, unrepaired prior damage, repainting
- A brief visual or functional inspection of the equipment details, if possible.
(*Functional testing of driver assistance systems is not included in the scope of services!*)
- a photographic documentation of the vehicle



Basis for the order

This product is based on the guidelines for vehicle returns and valuations published by Alphabet Fleet GmbH. The expert makes the specific findings in each individual case objectively, within the framework of the prescribed standards, based on their own expertise.

The vehicle inspection takes place in a fully assembled, unassembled state.

Damage or defects that can only be detected during disassembly/diagnostic work or through further investigation remain within the realm of prognostic risk. An increased risk exists due to concealed defects caused by fraudulent misrepresentation and which were not identifiable by the expert.

Damage or defects resulting from normal use or wear and tear of the vehicle will be accepted in accordance with the applicable standard.

There was no explicit identification or monetary consideration of the expected features within the product.

Features which, in their nature and extent, slightly exceed normal use but do not constitute unacceptable damage, will be documented and indicated as signs of wear, if applicable.

Damage or defects that, according to the applicable standard, can no longer be attributed to normal use or wear and tear are listed under "Value Reducing Factors" in the product description.

Depending on the product specification, a monetary ID can be provided. If this takes place, the costs can be 100% d or pro rata depending on the vehicle's age and mileage.

Previous damages

No apparent prior damage that had been repaired could be found on the vehicle.

Comments

Fahrzeug weist erhöhte Lackwerte auf.

- Winterradsatz ist kein Bestandteil des Auslieferungsumfangs.



Figure 1: Diagonal front (left)



Figure 2: Diagonal front (right)



Figure 3: Diagonal rear (left)



Figure 4: Diagonal rear (right)



Figure 5: Interior - front

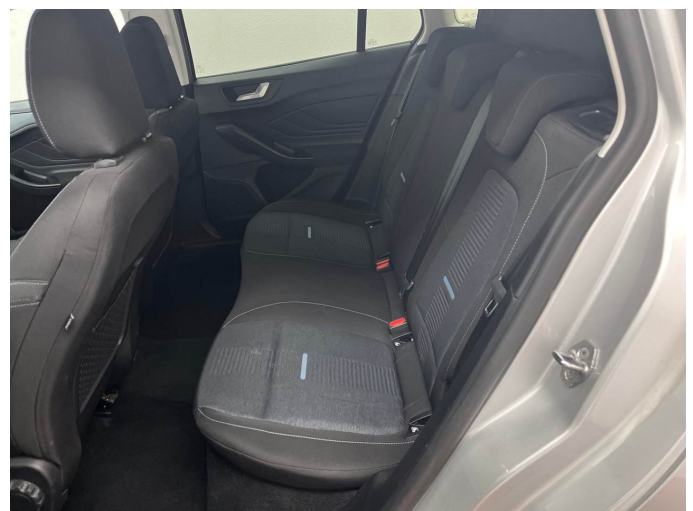


Figure 6: Interior - rear



Figure 7: Instrument cluster



Figure 8: Instrument panel



Figure 9: Interior 360° view



Figure 10: Cargo area



Figure 11: VIN



Figure 12: Mounted tyres



Figure 13: Documents



Figure 14: Documents

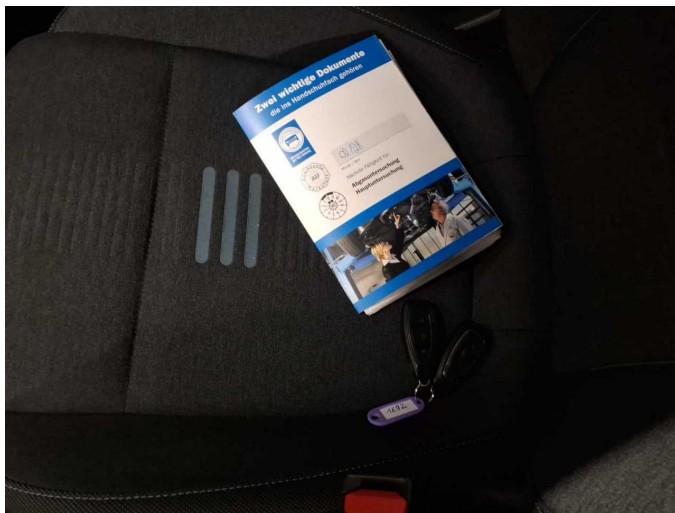


Figure 15: Documents



Figure 16: Additional tyres



Figure 17: Additional tyres

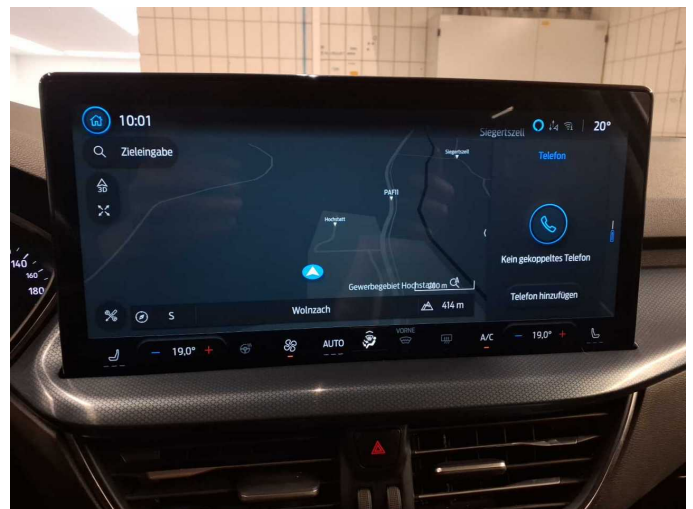


Figure 18: Navigation



Figure 19: Misc.



Figure 20: Misc.



Figure 21: Misc.



Figure 22: Misc.



Figure 23: Misc.



Figure 24: Misc.



Figure 25: Misc.



Figure 26: Misc.



Figure 27: Misc.



Figure 28: Misc.



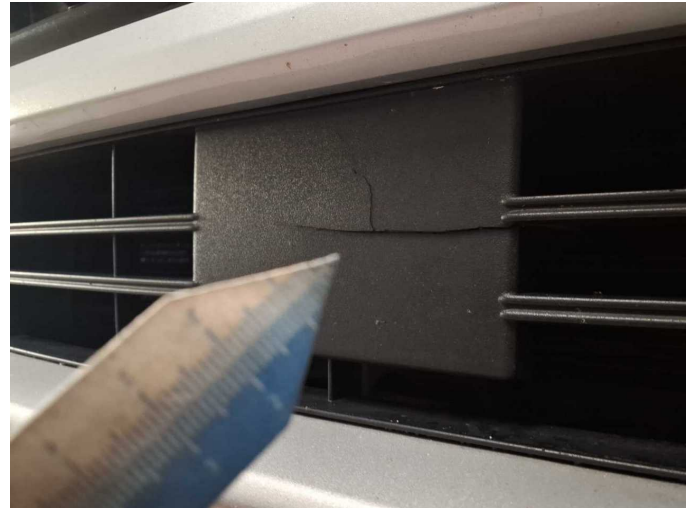
Damage 1: Boot lid / rear door: Boot lid - Glued / labelled - De-glue / neutralise



Damage 1: Boot lid / rear door: Boot lid - Glued / labelled - De-glue / neutralise



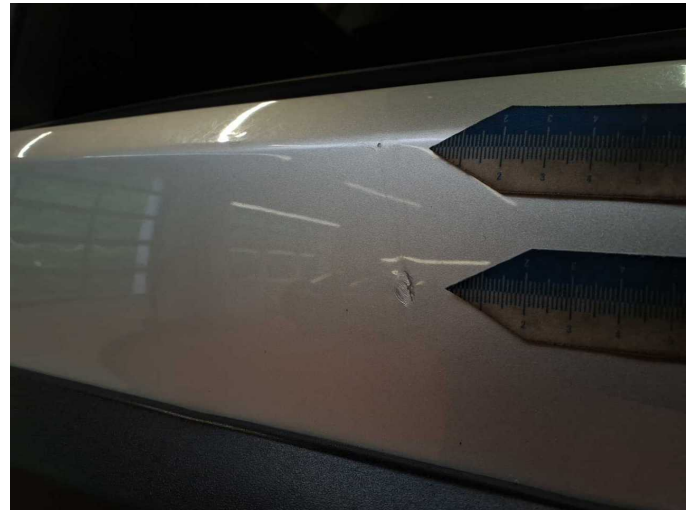
Damage 2: Front bumper: Grille - Broken / torn - Replace



Damage 2: Front bumper: Grille - Broken / torn - Replace



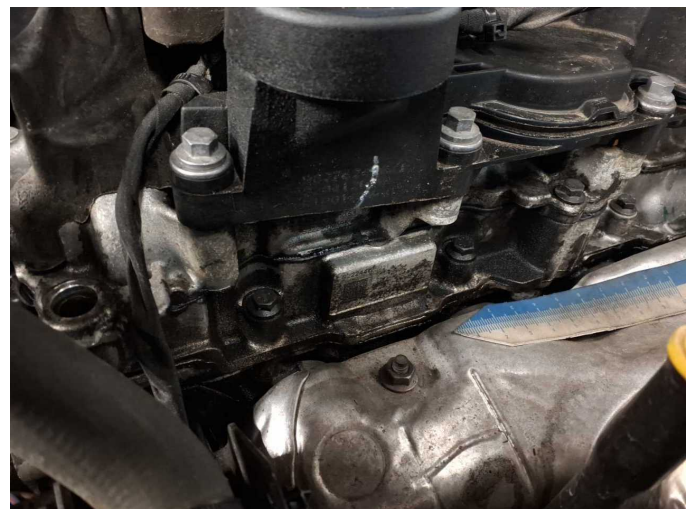
Damage 3: Rear bumper: Rear bumper - Scratched - Smart repair



Damage 3: Rear bumper: Rear bumper - Scratched - Smart repair



Damage 4: Engine: Engine (Ölverlust-Mehrkosten möglich) - Leaking - Perform diagnosis



Damage 4: Engine: Engine (Ölverlust-Mehrkosten möglich) - Leaking - Perform diagnosis



Damage 5: Rear bumper: Spoiler - Scratched - Replace



Damage 5: Rear bumper: Spoiler - Scratched - Replace



Wartungshistorie

(gemäß Auftraggeber Informationen)

Fahrgestellnummer: WF0PXXGCHPNA25756
Hersteller / Modell: FORD FORD Focus Turnier 1.5 EcoBlue Start-Stopp-System Aut. ACTIVE

Datum	KM-Stand	Beschreibung
26.02.2026	140.986	AU; Motoröl b. Wartung; Ölfilter ern; Regelwartungsdienst; Wartung Sonstiges
01.10.2025	114.350	Motoröl b. Wartung; Ölfilter ern; Regelwartungsdienst; Wartung Sonstiges
13.02.2025	82.467	Bremse Sonstiges; Bremsflüssigkeit; Bremsflüssigkeit ern; Bremsklötze hinten; Bremsklötze vorne; Bremsscheiben+Beläge v+h; Bremsscheiben hinten; Bremsscheiben vorne; Kraftstofffilter ern; Luftfiltereinsatz ern; Motoröl b. Wartung; Ölfilter ern; Regelwartungsdienst; Wartung Sonstiges
09.08.2024	56.776	Motoröl b. Wartung; Ölfilter ern; Ölwechsel; Wartung Sonstiges
26.03.2024	40.052	Motoröl b. Wartung; Ölfilter ern; Regelwartungsdienst; Wartung Sonstiges
05.10.2023	20.822	Motoröl b. Wartung; Ölfilter ern; Ölwechsel; Wartung Sonstiges