

Expertise

Protocol number: 46294357
Order No. / Reference: 26482705
Inspection date: 30 Jun 2026

Manufacturer: Ford

Model: Focus Turnier 1.0 EcoBoost Hybrid Aut. TITANIUM

VIN: WF0PXXGCHPRD38030



Vehicle details

Manufacturer / Type / Model / Equipment

Ford Focus Turnier 1.0 EcoBoost Hybrid Aut. TITANIUM

Vehicle Identification number WF0PXXGCHPRD38030

Mileage (Read) 48,549 km

First registration 27 Aug 2024

Number of holders 1

Power / Engine displacement 114 kw / 999 ccm

Fuel type / Cylinder Hybrid Petrol / E / 3

Gearbox / Number of gears Automatic / 7

Type of drive Front drive

Type of vehicle Station wagon

Colour / colour code Chrome Blue Metallic

Doors / Seats 5 / 5

Upholstery type Cloth

Colour of upholstery Anthracite-Black



Vehicle details

Maintenance booklet / proof	Available / incomplete	Next maintenance in	38 %
Last service on / at	12/2025 at 30,003 km		
Key is / should be	2 / 2	FZG documents	ZB#2 (B) was available (copy), ZB#1 (S) was not available.
		Letter No.	HB905870
Previous damage / Accident	None detectable	Repainting	None detectable
Inspection conditions	sufficient	Lifting equipment / pit	yes
Test drive	Not performed	Engine function test	Performed
Manufacturer key number/ type code number	8566 / BUE 00155		
Emission standard	EURO6;WLTP;EA;PI/CI;M, N1, N2	fine dust sticker	
Permitted total weight	2,005 kg	Empty weight	

Tyres

Mounted tyres

#	Tyre size	Type of tyre	Manufacturer	Tread depth
1)	205/60 R16 92V	Summer tyres on Light alloy	Goodyear	5mm / 5mm
2)	205/60 R16 92V	Summer tyres on Light alloy	Goodyear	5mm / 5mm

Additional tyres

#	Tyre size	Type of tyre	Manufacturer	Tread depth
1)	205/60 R16 96H	Winter tyres on Light alloy	Hankook	6mm / 6mm
2)	205/60 R16 96H	Winter tyres on Light alloy	Hankook	5mm / 5mm

Replacement

Typ	Tyre size	Type of tyre	Manufacturer	Tread depth
	Tirefit	Expiration date 08/2028		

Legend: Tread depth information for the left tire is listed first, for the right tire it is listed second on the axle in the direction of travel.



Equipment

Standard equipment

- Airbag: Passenger airbag deactivation
- Exterior mirrors painted in body color, electrically adjustable, heated and foldable
- Hill start assist
- Roof rails, aluminum
- Tachometer
- Electronic Safety and Stability Program (ESP)
- Lane keeping assist including lane keeping assist
- Electric windows front and rear
- Ford Easy Fuel
- Ford Power Start function
- Luggage compartment cover
- Cruise control
- Illuminated glove compartment
- Back window, heater
- Interior lighting with LED technology
- Intelligent security system
- Air conditioning with automatic temperature control
- LED taillights
- Steering wheel: 3-spoke design
- Make-up mirrors in driver and passenger sun visors
- MyKey key system (individually programmable second key)
- Navigation: Ford SYNC 4 including Ford navigation system with AppLink, 13.2" touchscreen and DAB/DAB+
- Front and rear parking pilot system
- Post-Collision Assist
- Tire repair kit
- Gear knob, Sensico in leather look
- Headlight assistant with day/night sensor
- Electromechanical speed-dependent power steering
- Seats: Driver's seat height adjustable
- Seats: Front sports seats with enhanced lateral support
- 12-volt socket
- Black trim above the side window
- Warning system for unfastened seat belts for the 1st and 2nd rows of seats
- Anti-lock braking system (ABS) with electronic brake force distribution (EBD)
- Tires: 6.5 J x 16 design wheels (4) with 205/60 R16 tires
- Fabric headliner
- Roof spoiler painted in car color
- Third brake light
- Driver information system with on-board computer, color (10.7 cm screen diagonal)
- Electric parking brake with auto-hold function
- Ford ECO-Coach
- FordPass Connect including live traffic information
- Speed limiter
- Transmission: 7-speed PowerShift automatic transmission
- Rear window wiper
- Interior mirror, automatically dimming
- Isofix bracket
- Headrests: 2 front and 3 rear, height adjustable
- LED headlights
- Adjustable steering column
- Center console "Premium" front
- Fatigue warning
- Emergency call assistant
- Otto particulate filter
- Upholstery: Cloth
- Pre-Collision Assist
- Tire Pressure Monitoring System (TMPS)
- Windscreen wipers with rain sensor (sensitivity adjustable)
- Selective driving mode switch
- Seats: Passenger seat, 2-way adjustable
- Seats: Rear seat backrest
- Start-stop system
- Carpet floor mats in the front
- Lashing eyes in the luggage compartment
- Electronic immobilizer
- Central locking with remote control and remote luggage compartment release



Extra equipment

- Detachable towbar (including ESP trailer stabilization)
- Package: Easy Parking (Active Parking Assist with parking and exiting function (in conjunction with 8-speed automatic transmission including semi-automated vehicle guidance) - Door edge protection - Rearview camera with "Split View" technology)
- Package: Winter (heated windscreen - heated steering wheel - individually and variably heated front seats)
- Panoramic sliding sunroof, electric (roof console with glasses storage compartment - illuminated make-up mirror)
- Side windows from the 2nd row of seats and rear window, dark tinted.
- Paint finish: Metallic
- Package: Driver Assistance Package (for automatic transmission) (Drive Assist, Intelligent Adaptive Cruise Control, Lane Keeping Assist, Traffic Jam Assist with Stop&Go function, Traffic Sign Recognition System, Wrong-Way Driver Warning, Evasive Steering Assist, Distance Display and Distance Warning, High Beam Assist (in conjunction with adaptive LED matrix headlights with glare-free high beam assist), Blind Spot Assist with Cross Traffic Alert including emergency braking function (when reversing out of parking spaces) and trailer detection, Rearview camera with split view)

Brief expert findings

Documents submitted	At the time of the inspection, the vehicle registration certificate Part 2 (title) was available, but the vehicle registration certificate Part 1 (document) was not. (Copy)
VIN comparison	The vehicle identification number (VIN) was read from the vehicle and its conformity with the submitted documents was confirmed by the undersigned during the inspection.
Inspection	The inspection conditions were sufficient for the assessment of the vehicle. Lifting equipment and/or a pit were available for examining the vehicle.
Test drive	No test drive/shunting maneuver was carried out during the inspection of the vehicle.
Engine function test	An engine test run was performed.

Value reducing factors

No.	Component group	Description
1	Sill - right side	Sill - dent(s) - Smart repair
2	Front bumper	Front bumper - Scratch(es) - Paint
3	Side panel - rear right side	Side panel - Scratch(es) - Paint

Wear and tear

No.	Component group	Description
1	2nd wheel set	1 wheel cover - Scratch(es) - No deduction
2	Door - front left side	Door - Scratch(es) - No deduction
3	Vehicle glazing	Windscreen - Stone chips - No deduction

The vehicle shows signs of wear and tear commensurate with its age and use.

Order/Scope of Order

An order was placed to prepare a sales report for the described vehicle. This report includes the following:

- Description of key vehicle information
- Documentation of equipment features
(*Delivery by third-party service providers*)
- Documentation of damage, defects, missing parts
- Documentation of prior damage, unrepaired prior damage, repainting
- A brief visual or functional inspection of the equipment details, if possible.
(*Functional testing of driver assistance systems is not included in the scope of services!*)
- a photographic documentation of the vehicle



Basis for the order

This product is based on the guidelines for vehicle returns and valuations published by Alphabet Fleet GmbH. The expert makes the specific findings in each individual case objectively, within the framework of the prescribed standards, based on their own expertise.

The vehicle inspection takes place in a fully assembled, unassembled state.

Damage or defects that can only be detected during disassembly/diagnostic work or through further investigation remain within the realm of prognostic risk. An increased risk exists due to concealed defects caused by fraudulent misrepresentation and which were not identifiable by the expert.

Damage or defects resulting from normal use or wear and tear of the vehicle will be accepted in accordance with the applicable standard.

There was no explicit identification or monetary consideration of the expected features within the product.

Features which, in their nature and extent, slightly exceed normal use but do not constitute unacceptable damage, will be documented and indicated as signs of wear, if applicable.

Damage or defects that, according to the applicable standard, can no longer be attributed to normal use or wear and tear are listed under "Value Reducing Factors" in the product description.

Depending on the product specification, a monetary ID can be provided. If this takes place, the costs can be 100% d or pro rata depending on the vehicle's age and mileage.

Previous damages

No apparent prior damage that had been repaired could be found on the vehicle.

Comments

Wartungshistorie gemäß Auftraggeber Informationen.

Der beiliegende Winterradsatz ist nicht Bestandteil der Ausstattung.



Figure 1: Diagonal front (left)



Figure 2: Diagonal front (right)



Figure 3: Diagonal rear (left)



Figure 4: Diagonal rear (right)

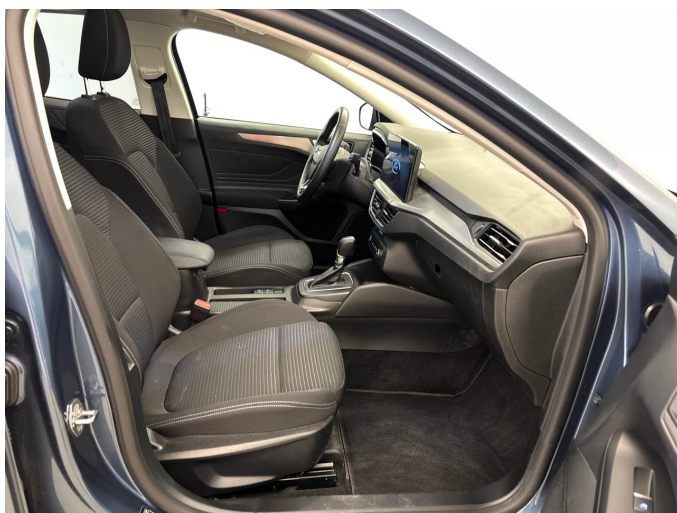


Figure 5: Interior - front

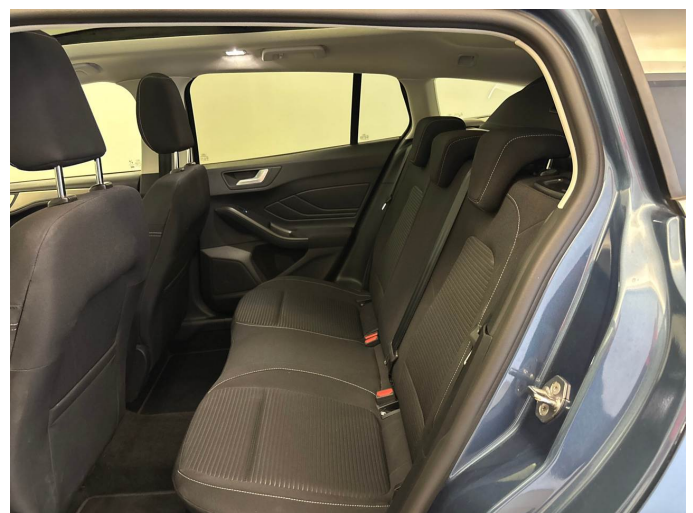


Figure 6: Interior - rear



Figure 7: Instrument cluster



Figure 8: Instrument panel



Figure 9: Interior 360° view



Figure 10: Cargo area

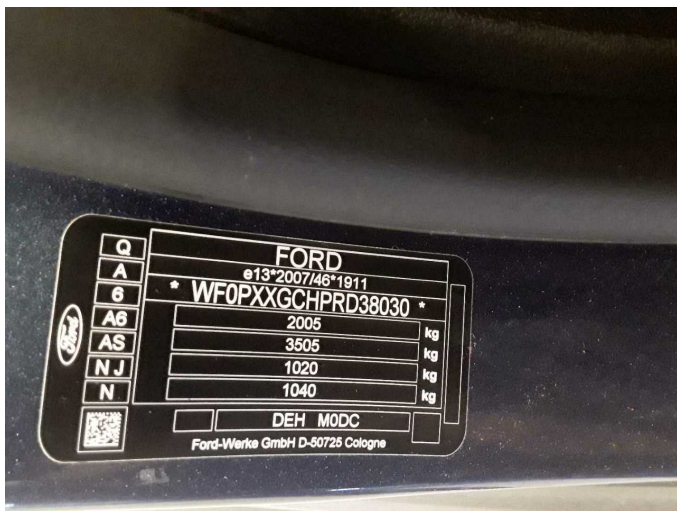


Figure 11: VIN



Figure 12: Mounted tyres



Figure 13: Documents

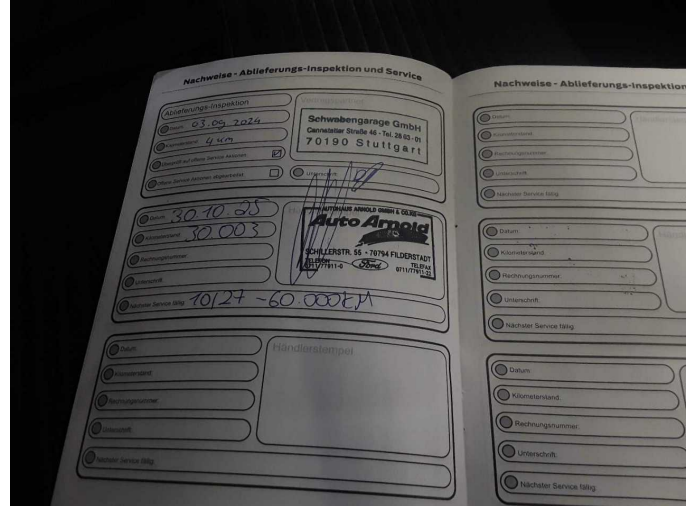


Figure 14: Documents



Figure 15: Additional tyres



Figure 16: Navigation



Figure 17: Misc.

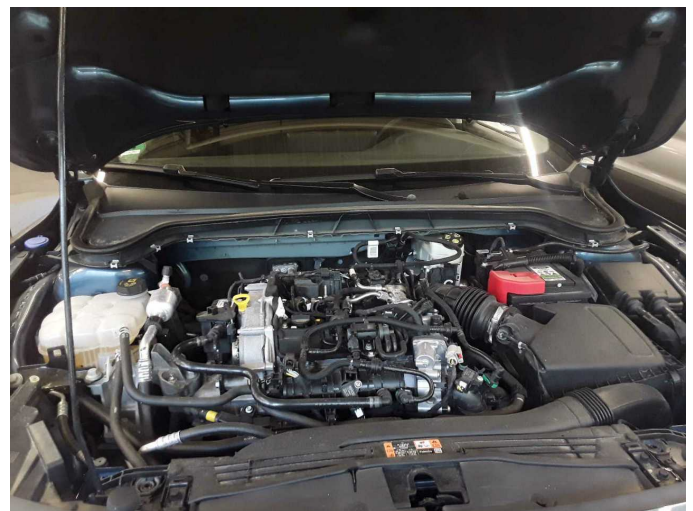


Figure 18: Misc.



Figure 19: Misc.



Figure 20: Misc.

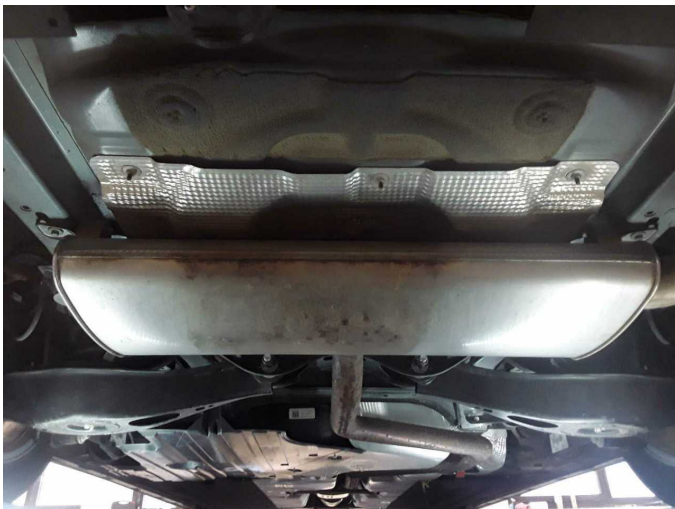


Figure 21: Misc.



Figure 22: Misc.



Figure 23: Misc.



Figure 24: Misc.



Figure 25: Misc.



Figure 26: Misc.



Figure 27: Misc.

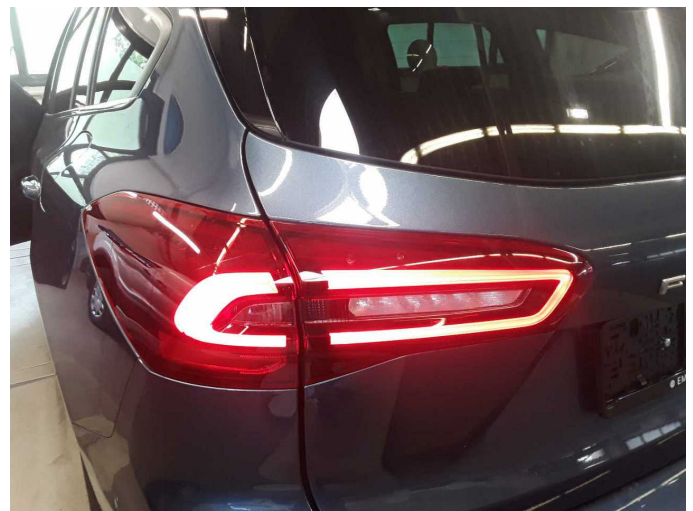


Figure 28: Misc.

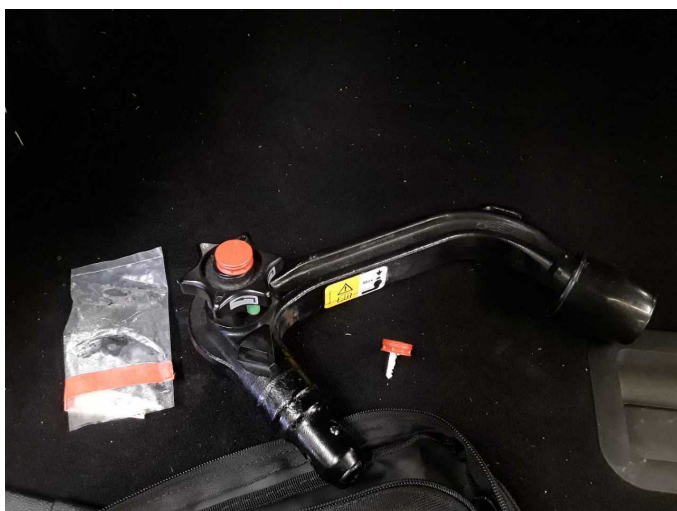


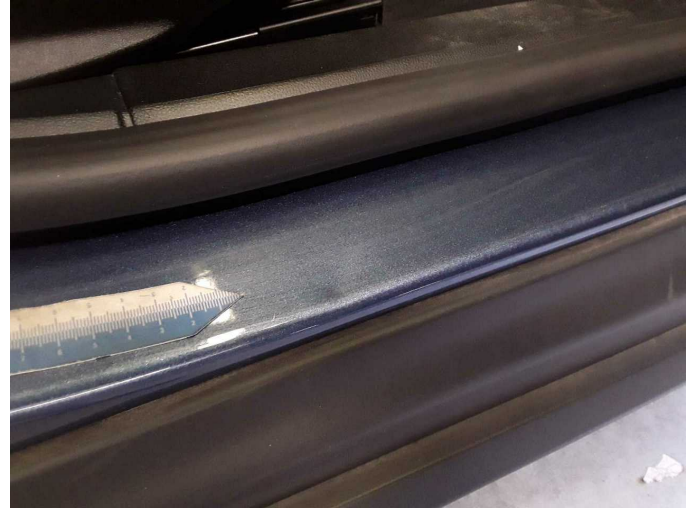
Figure 29: Misc.



Figure 30: Misc.



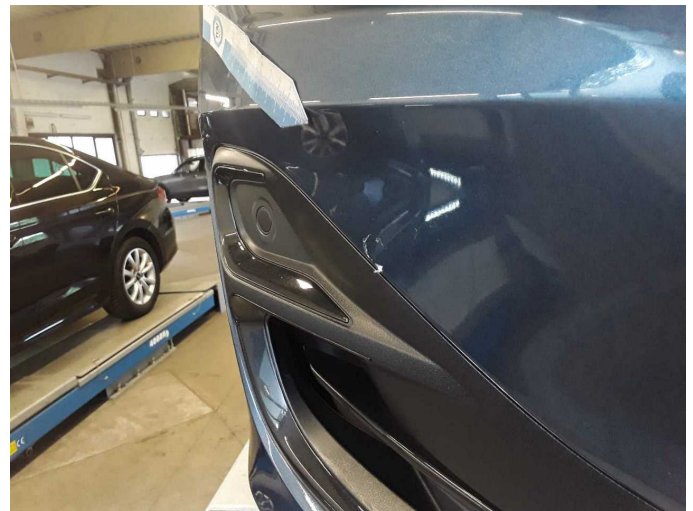
Damage 1: Sill - right side: Sill - dent(s) - Smart repair



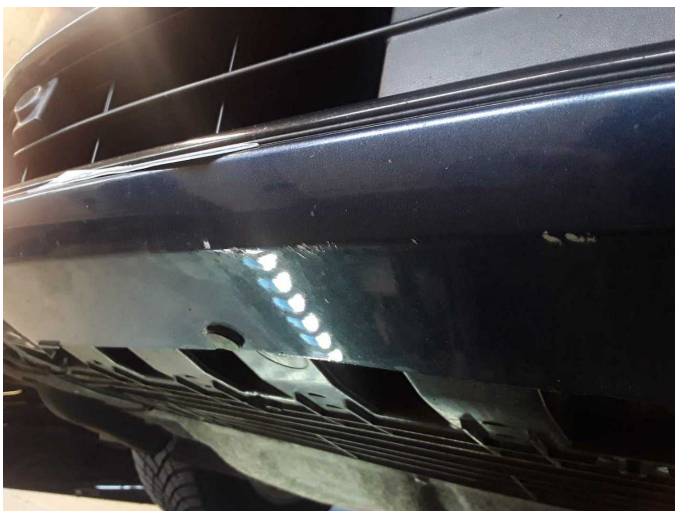
Damage 1: Sill - right side: Sill - dent(s) - Smart repair



Damage 2: Front bumper: Front bumper - Scratch(es) - Paint



Damage 2: Front bumper: Front bumper - Scratch(es) - Paint



Damage 2: Front bumper: Front bumper - Scratch(es) - Paint



Damage 2: Front bumper: Front bumper - Scratch(es) - Paint



Damage 3: Side panel - rear right side: Side panel - Scratch(es) - Paint



Damage 3: Side panel - rear right side: Side panel - Scratch(es) - Paint



Damage 3: Side panel - rear right side: Side panel - Scratch(es) - Paint



Wartungshistorie

(gemäß Auftraggeber Informationen)

Fahrgestellnummer: WF0PXXGCHPRD38030

Hersteller / Modell: FORD Focus Turnier 1.0 EcoBoost Hybrid Aut. TITANIUM

Datum	KM-Stand	Beschreibung
05.12.2025	30.003	Motoröl b. Wartung; Ölfilter ern; Regelwartungsdienst; Wartung Sonstiges