

Expertise

Protocol number: 46323368
Order No. / Reference: 26539100
Inspection date: 25 Jun 2026

Manufacturer: Ford

Model: Transit 310 L2 VA Trend

VIN: WF0CXXTTRCLY65137



Vehicle details

Manufacturer / Type / Model / Equipment

Ford Transit 310 L2 VA Trend

Vehicle Identification number WF0CXXTTRCLY65137

Mileage (Read) 198,915 km

First registration 12 Jan 2021

Number of holders 1

Power / Engine displacement 96 kw / 1,995 ccm

Fuel type / Cylinder Diesel / 4

Gearbox / Number of gears Manual / 6

Type of drive Front drive

Type of vehicle Van

Colour / colour code Frozen White

Doors / Seats 4 / 7

Upholstery type Artificial leather

Colour of upholstery Black



Vehicle details

| | | | |
|--|--------------------------------|--------------------------------|--|
| Maintenance booklet / proof | Non-existent | Next maintenance in | 35,000 km |
| Key is / should be | 2 / 2 | FZG documents | ZB#2 (B) was available (copy), ZB#1 (S) was not available. |
| | | Letter No. | FY045771 |
| Previous damage / Accident | None detectable | Repainting | None detectable |
| Inspection conditions | sufficient | Lifting equipment / pit | yes |
| Test drive | Not performed | Engine function test | Performed |
| Manufacturer key number/ type code number | 8566 / BNB 04349 | | |
| Emission standard | EURO6;WLTP;CI;PI/CI;N1 III, N2 | fine dust sticker | |
| Permitted total weight | 3,140 kg | Empty weight | |

Tyres

Mounted tyres

| # | Tyre size | Type of tyre | Manufacturer | Tread depth |
|----|-----------------|--|--------------|-------------|
| 1) | 215/65 R16 109R | All-season tyres on Steel rim with wheel cover | Falken | 3mm / 3mm |
| 2) | 215/65 R16 109R | All-season tyres on Steel rim with wheel cover | Falken | 6mm / 6mm |

Replacement

| Typ | Tyre size | Type of tyre | Manufacturer | Tread depth |
|-----|-------------------|---------------------------|--------------|-------------|
| E | 215/65 R16 109T C | All-season tyres on Steel | Kumho | 8 mm |

Legend: Tread depth information for the left tire is listed first, for the right tire it is listed second on the axle in the direction of travel.



Equipment

Standard equipment

- 1 battery
- Anti-lock braking system with electronic brake force distribution (EBD)
- Exterior mirror, long arm (with integrated turn signals)
- roof, flat
- Roof, overhead storage compartment at the front
- Roof marker lights
- Tachometer
- Electronic Stability Program (ESP) with Traction Control (TSC) (Hill Start Assist - Crosswind Assist - Safety Brake Assist - Rollover Protection - Emergency Brake Support incl. Emergency Brake Light - additionally with Trailer Stabilization only in conjunction with trailer hitch (extra charge))
- Generator, high-performance version
- Transmission: 6-speed transmission
- Interior lighting with delay function (with reading lights at the front)
- Paint finish: Solid color paint
- Steering column, adjustable in height and reach
- Particulate filter: diesel particulate filter
- Wheels: Steel wheels 6.5 J x 16 with 215/65 tires
- Headlights with static cornering lights
- Power steering
- Start-stop system
- Daytime running light
- Immobiliser
- Central locking with remote control
- Driver's side airbag
- Exterior mirrors, electrically adjustable and heated (with integrated turn signals)
- On-board computer (with fuel consumption and mileage information (e.g. remaining range) as well as outside temperature display and Ford ECO mode)
- Double cab (2nd row of seats with 4-seater bench including 4 headrests, 3-point seat belts and two ISOFIX mounts - storage compartment under the seats of the 2nd row - 2 rear doors with fixed windows - complete headliner)
- Front electric windows (with quickdown/up function for driver's side)
- Ford Easy Fuel (comfortable fuel filler cap and misfuelling protection)
- Cruise control including leather steering wheel
- Lockable glove compartment with lid
- Front air conditioning (including dust and pollen filter)
- Fuel tank 70 l
- leather steering wheel
- Fog light
- Flatbed: Standard flatbed (wide) (front wall extension, retaining straps for loading flap)
- Headlights with delayed shut-off
- Seat belts (front seat belt tensioners and force limiters - warning system for unfastened driver's seat belt)
- recirculation mode
- Heat-insulating glazing, lightly tinted
- Second key, foldable, with remote control

Extra equipment

- Airbag (passenger side)
- Lane keeping assist, driver drowsiness warning, and high beam assist
- Package: Smoker (cigarette lighter and ashtray)
- Radio: Audio system 17: Ford audio system with 4" multifunction display plus DAB/DAB+ (Connected Radio (FM/AM) - 4" TFT multifunction display (10.16 cm screen diagonal) - Four speakers, antenna - Integrated control panel and audio remote control on the steering wheel - Bluetooth, USB port and hands-free system - with digital radio reception DAB/DAB+ (Digital Audio Broadcasting) - FordPass Connect incl. Live Traffic information and Wi-Fi hotspot (up to 4G/LTE, for up to 10 mobile devices) - Emergency Call Assist)
- Fixed towbar (13-pin including trailer sway control (TSC))
- Adaptive cruise control (leather steering wheel - Pre-Collision Assist - Active emergency braking assist - Lane keeping assist with lane keeping assist)
- Wheels/Tires: Spare wheel, steel wheel
- Wheels: Steel wheels 6.5 J x 16 with winter tires, suitable for all seasons (replace standard tires)
- Seats: Seat package 2 (driver's seat, 4-way adjustable (forward/backward, backrest, tilt, height) - double passenger seat with storage compartment under individually foldable seat cushions - height-adjustable headrests - interior armrest for driver - tray in double passenger seat (fold-out) - synthetic leather (vinyl))



Brief expert findings

| | |
|----------------------|--|
| Documents submitted | At the time of the inspection, the vehicle registration certificate Part 2 (title) was available, but the vehicle registration certificate Part 1 (document) was not. (Copy) |
| VIN comparison | The vehicle identification number (VIN) was read from the vehicle and its conformity with the submitted documents was confirmed by the undersigned during the inspection. |
| Inspection | The inspection conditions were sufficient for the assessment of the vehicle. Lifting equipment and/or a pit were available for examining the vehicle. |
| Test drive | No test drive/shunting maneuver was carried out during the inspection of the vehicle. |
| Engine function test | An engine test run was performed. |

Value reducing factors

| No. | Component group | Description |
|-----|--------------------------|---|
| 1 | Trim / covers | Sill - front right side - Missing - Replace |
| 2 | Instrument panel | Instrument panel (Mitte) - Glued / labelled - De-glue / neutralise |
| 3 | Mudguard - right side | Wheel well extension - Scratch(es) - Loss in value |
| 4 | Wing mirror - right side | Mirror glass - Missing - Replace |
| 5 | Indicator - front | Mirror - right side - Broken / torn - Replace |
| 6 | Instrument panel | Air nozzle - centre - Broken / torn - Replace |
| 7 | Body | Body - Glued / labelled - De-glue / neutralise |
| 8 | Wheel / tyres | Tyre - front - Worn - Replace |
| 9 | Seat - front | Seat cover - left side - Porous / cracked - Replace |
| 10 | Front bumper | Front bumper (Zusätzlich lose & Abdeckkappe Abschleppöse fehlt) - Scratch(es) - Replace |
| 11 | Sill - left side | Sill - Corrosion - Repair and paint |
| 12 | Sill - right side | Sill (Vorn) - Corrosion - Repair and paint |
| 13 | Interior | Cargo area floor - Broken / torn - Loss in value |

Wear and tear

| No. | Component group | Description |
|-----|------------------------|--|
| 1 | Interior | Interior - Soiled - No deduction |
| 2 | Mudguard - left side | Wheel well extension - Scratch(es) - No deduction |
| 3 | Boot lid / rear door | Boot lid - dent(s) - No deduction |
| 4 | Body | Body - Soiled - No deduction |
| 5 | Door - front left side | Door - Dent / paintcoat damage - No deduction |
| 6 | Seat - front | Seat cover - right side - Scratch(es) - No deduction |

The vehicle shows signs of wear and tear commensurate with its age and use.

Missing parts

Description

Documents - Service book



Order/Scope of Order

An order was placed to prepare a sales report for the described vehicle. This report includes the following:

- Description of key vehicle information
- Documentation of equipment features
(Delivery by third-party service providers)
- Documentation of damage, defects, missing parts
- Documentation of prior damage, unrepaired prior damage, repainting
- A brief visual or functional inspection of the equipment details, if possible.
(Functional testing of driver assistance systems is not included in the scope of services!)
- a photographic documentation of the vehicle

Basis for the order

This product is based on the guidelines for vehicle returns and valuations of light commercial vehicles published by Alphabet Fleet Management GmbH. The expert makes the specific findings in each individual case objectively, within the framework of the prescribed standards, based on their own expertise.

The vehicle inspection takes place in a fully assembled, unassembled state.

Damage or defects that can only be detected during disassembly/diagnostic work or through further investigation remain within the realm of prognostic risk. An increased risk exists due to concealed defects caused by fraudulent misrepresentation and which were not identifiable by the expert.

Damage or defects resulting from normal use or wear and tear of the vehicle will be accepted in accordance with the applicable standard.

There was no explicit identification or monetary consideration of the expected features within the product.

Features which, in their nature and extent, slightly exceed normal use but do not constitute unacceptable damage, will be documented and indicated as signs of wear, if applicable.

Damage or defects that, according to the applicable standard, can no longer be attributed to normal use or wear and tear are listed under "Value Reducing Factors" in the product description.

Depending on the product specification, a monetary ID can be provided. If this takes place, the costs can be 100% or pro rata depending on the vehicle's age and mileage.

Previous damages

No apparent prior damage that had been repaired could be found on the vehicle.

Comments

Das Fahrzeug befand sich zum Besichtigungszeitpunkt in beschädigtem, nicht demontiertem Zustand. Schadenausweitung möglich, Zusatzkosten können entstehen.



Figure 1: Diagonal front (left)



Figure 2: Diagonal front (right)



Figure 3: Diagonal rear (left)



Figure 4: Diagonal rear (right)

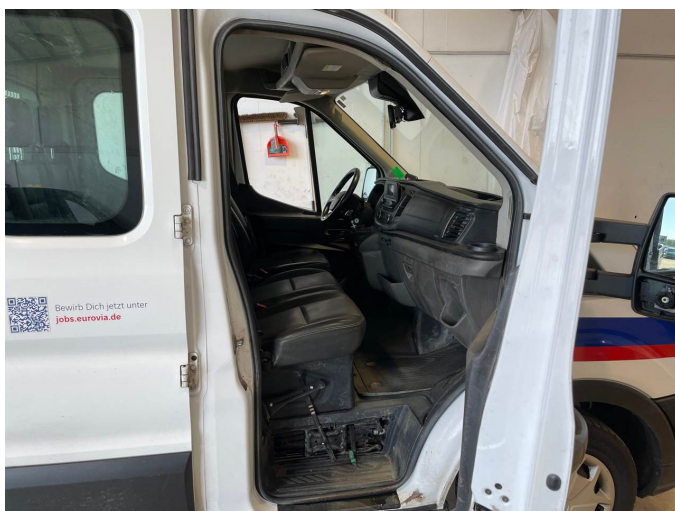


Figure 5: Interior - front



Figure 6: Interior - rear



Figure 7: Instrument cluster



Figure 8: Instrument panel



Figure 9: Interior 360° view



Figure 10: Cargo area



Figure 11: VIN



Figure 12: Mounted tyres



Figure 13: Documents



Figure 14: Misc.



Figure 15: Misc.



Figure 16: Misc.



Figure 17: Misc.



Figure 18: Misc.



Figure 19: Misc.



Figure 20: Misc.

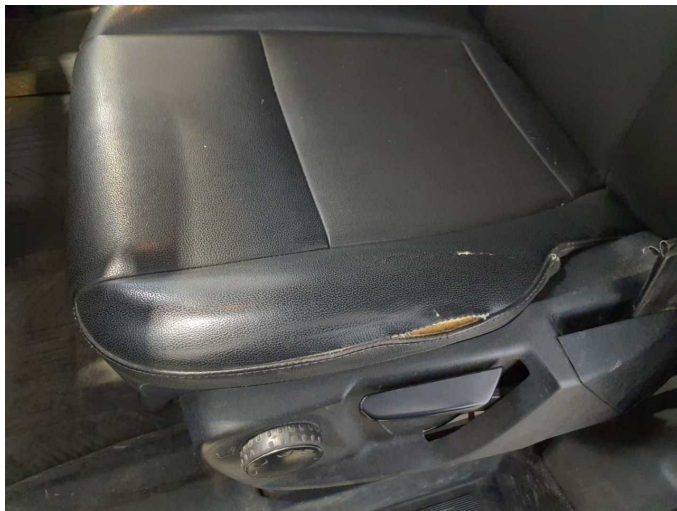


Figure 21: Misc.

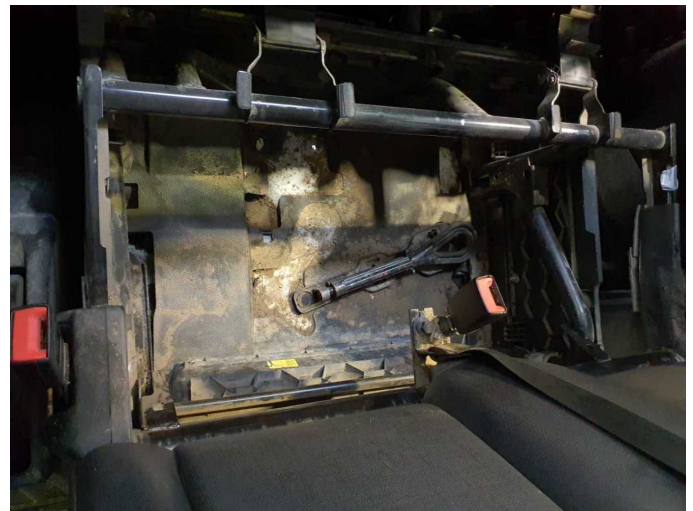


Figure 22: Misc.



Figure 23: Misc.



Figure 24: Misc.



Figure 25: Misc.



Figure 26: Misc.



Figure 27: Misc.



Figure 28: Misc.

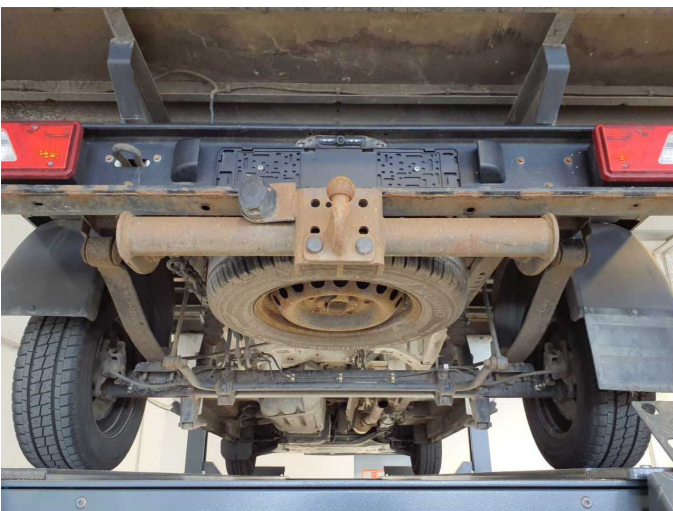


Figure 29: Misc.



Figure 30: Misc.



Figure 31: Misc.



Damage 1: Trim / covers: Sill - front right side - Missing - Replace



Damage 1: Trim / covers: Sill - front right side - Missing - Replace



Damage 2: Instrument panel: Instrument panel (Mitte) - Glued / labelled - De-glue / neutralise



Damage 2: Instrument panel: Instrument panel (Mitte) - Glued / labelled - De-glue / neutralise



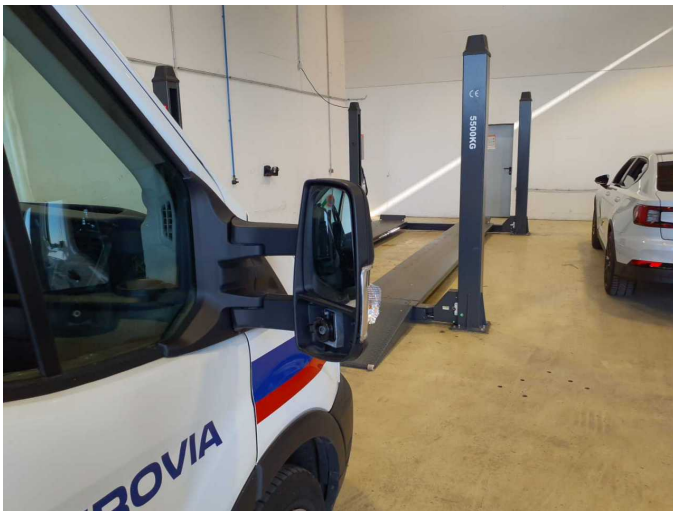
Damage 3: Mudguard - right side: Wheel well extension - Scratch(es) - Loss in value



Damage 3: Mudguard - right side: Wheel well extension - Scratch(es) - Loss in value



Damage 3: Mudguard - right side: Wheel well extension - Scratch(es) - Loss in value



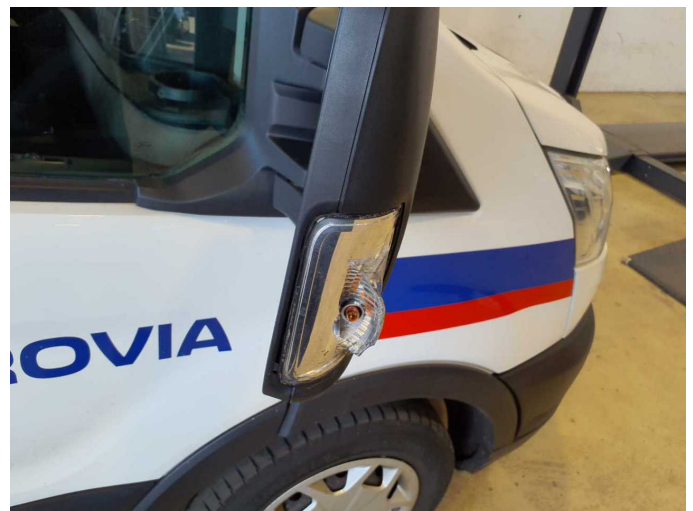
Damage 4: Wing mirror - right side: Mirror glass - Missing - Replace



Damage 4: Wing mirror - right side: Mirror glass - Missing - Replace



Damage 5: Indicator - front: Mirror - right side - Broken / torn - Replace



Damage 5: Indicator - front: Mirror - right side - Broken / torn - Replace



Damage 6: Instrument panel: Air nozzle - centre - Broken / torn - Replace



Damage 6: Instrument panel: Air nozzle - centre - Broken / torn - Replace



Damage 7: Body: Body - Glued / labelled - De-glue / neutralise



Damage 7: Body: Body - Glued / labelled - De-glue / neutralise



Damage 7: Body: Body - Glued / labelled - De-glue / neutralise



Damage 7: Body: Body - Glued / labelled - De-glue / neutralise



Damage 8: Wheel / tyres: Tyre - front - Worn - Replace



Damage 8: Wheel / tyres: Tyre - front - Worn - Replace



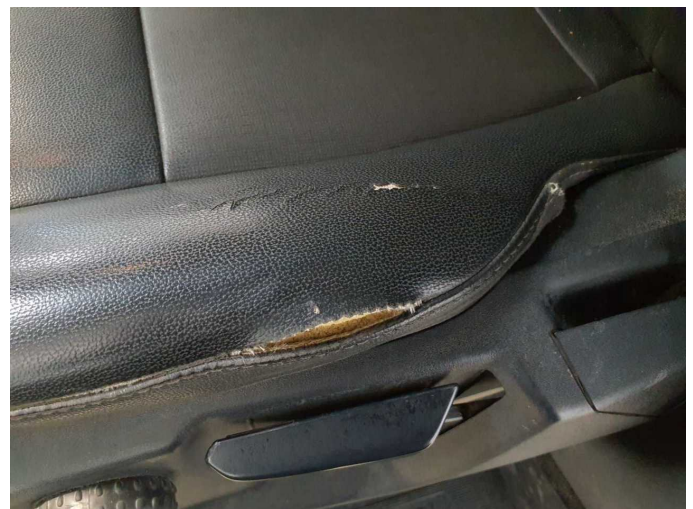
Damage 8: Wheel / tyres: Tyre - front - Worn - Replace



Damage 8: Wheel / tyres: Tyre - front - Worn - Replace



Damage 9: Seat - front: Seat cover - left side - Porous / cracked - Replace



Damage 9: Seat - front: Seat cover - left side - Porous / cracked - Replace



Damage 10: Front bumper: Front bumper (Zusätzlich lose & Abdeckkappe Abschleppöse fehlt) - Scratch(es) - Replace



Damage 10: Front bumper: Front bumper (Zusätzlich lose & Abdeckkappe Abschleppöse fehlt) - Scratch(es) - Replace



Damage 10: Front bumper: Front bumper (Zusätzlich lose & Abdeckkappe Abschleppöse fehlt) - Scratch(es) - Replace



Damage 10: Front bumper: Front bumper (Zusätzlich lose & Abdeckkappe Abschleppöse fehlt) - Scratch(es) - Replace



Damage 10: Front bumper: Front bumper (Zusätzlich lose & Abdeckkappe Abschleppöse fehlt) - Scratch(es) - Replace



Damage 10: Front bumper: Front bumper (Zusätzlich lose & Abdeckkappe Abschleppöse fehlt) - Scratch(es) - Replace



Damage 10: Front bumper: Front bumper (Zusätzlich lose & Abdeckkappe Abschleppöse fehlt) - Scratch(es) - Replace



Damage 11: Sill - left side: Sill - Corrosion - Repair and paint



Damage 11: Sill - left side: Sill - Corrosion - Repair and paint



Damage 11: Sill - left side: Sill - Corrosion - Repair and paint



Damage 12: Sill - right side: Sill (Vorn) - Corrosion - Repair and paint



Damage 12: Sill - right side: Sill (Vorn) - Corrosion - Repair and paint



Damage 13: Interior: Cargo area floor - Broken / torn - Loss in value



Damage 13: Interior: Cargo area floor - Broken / torn - Loss in value



Damage 13: Interior: Cargo area floor - Broken / torn - Loss in value