

Expertise

Protocol number: 46370039
Order No. / Reference: 26520943
Inspection date: 3 Jul 2026

Manufacturer: Audi

Model: A4 Avant 35 TDI S tronic advanced

VIN: WAUZZZF48MA041260



Vehicle details

Manufacturer / Type / Model / Equipment

Audi A4 Avant 35 TDI S tronic advanced

Vehicle Identification number WAUZZZF48MA041260

Mileage (Read) 123,611 km

First registration 26 Feb 2021

Number of holders 1

Next periodical technical inspection 04/2028

(Report not on hand)

Power / Engine displacement 120 kw / 1,968 ccm

Fuel type / Cylinder Hybrid Diesel / E / 4

Gearbox / Number of gears Automatic / 7

Type of drive Front drive

Type of vehicle Station wagon

Colour / colour code Florettsilber Metallic

Doors / Seats 5 / 5

Upholstery type Cloth

Colour of upholstery Black

Re-import no

readiness to drive Roadworthy



Vehicle details			
Maintenance booklet / proof	digital proof / complete	Next maintenance in	3,000 km
Last service on / at	12/2025 at 111,923 km		
Key is / should be	2 / 2	FZG documents	ZB#2 (B) was available (copy), ZB#1 (S) was not available.
		Letter No.	FX474138
Previous damage / Accident	Detectable	Repainting	None detectable
Inspection conditions	sufficient	Lifting equipment / pit	No
Test drive	Not performed	Engine function test	Performed
readiness to drive	Roadworthy		
Manufacturer key number/ type code number	0588 / BPK 00419		
Emission standard	EURO6;WLTP;AP;PI/CI; M, N1 I	fine dust sticker	
Permitted total weight	2,165 kg	Empty weight	

Tyres

Mounted tyres				
#	Tyre size	Type of tyre	Manufacturer	Tread depth
1)	225/50 R17 98Y	Summer tyres on Light alloy	Fulda	6mm / 6mm
2)	225/50 R17 98Y	Summer tyres on Light alloy	Fulda	6mm / 6mm

Additional tyres				
#	Tyre size	Type of tyre	Manufacturer	Tread depth
1)	205/60 R16 92H	Winter tyres on Light alloy	Goodyear	4mm / 2mm
2)	205/60 R16 92H	Winter tyres on Light alloy	Goodyear	2mm / 1mm

Replacement				
Typ	Tyre size	Type of tyre	Manufacturer	Tread depth
	Tirefit	Expiration date 11/2024		

Legend: Tread depth information for the left tire is listed first, for the right tire it is listed second on the axle in the direction of travel.

TÜV SÜD Auto Partner GmbH
Wiesenring 2
04159 Leipzig

Inspection location
Hartmann Fleet Professionals GmbH
Leerenstraße 25
29683 Bad Fallingbommel



Equipment



Standard equipment

- AdBlue tank (12 liters) (tank for AdBlue solution for reducing nitrogen oxides in the exhaust gas using an SCR system)
- Accent surfaces in matte black (for dashboard, trim panels in door sills and center console insert)
- Traction control (ASR)
- Audi pre sense city (can detect vehicles and pedestrians within system limits at speeds up to approximately 85 km/h. If an impending collision is detected, the system warns the driver visually, audibly, and, if necessary, with a braking jolt, and can initiate full deceleration if required to reduce speed or, if necessary, avoid the collision.)
- Electrically adjustable and heated exterior mirrors (with integrated LED turn signals, including heated windshield washer nozzles)
- Headliner in fabric (depending on the chosen interior color, either titanium grey or atlas beige)
- Decorative inlays diamond lacquer silver grey
- Tachometer
- Electromechanical parking brake (includes parking brake function when stationary, starting aid by automatic release when starting and full deceleration while driving via all 4 wheels)
- Chassis: Standard chassis (for good driving dynamics with very good ride comfort; shock absorbers and coil springs on front and rear axles)
- Electric windows (front and rear)
- Window channel strips in black (rubber)
- Remote key, without SafeLock (locks and unlocks doors, luggage compartment and fuel filler flap - including Keyless-Go - including comfort closing/opening of windows)
- Transmission: S tronic 7-speed
- rear window wiper
- Top speed limited to 210 km/h
- Interior lighting (front and rear roof module including reading lights - capacitively operated at the front, ambient light on center console, glove box light, passive door warning lights, trunk light on the left, additionally on the right for the A4 Avant/S4 Avant, and tailgate lighting)
- Automatic climate control (single-zone automatic climate control - electronically regulates air temperature, volume and distribution, sun position-dependent control - air distribution can be set using 5 main positions - the 3 LEDs integrated into the seat heating and seat ventilation buttons provide feedback on the selected setting (optional) - buttons for defrosting the front and rear windows - manual recirculation control and particle filter - with key recognition and humidity sensor)
- LED headlights (low beam, high beam, daytime running lights and position lights in LED technology - turn signals in incandescent bulb technology)
- Steering column, manually adjustable in height and axis
- Light/rain sensor (for controlling the automatic headlight switching, the coming home/leaving home function and the automatic windshield wiper function)
- Airbag for driver and front passenger (with front passenger airbag deactivation)
- Airbag: Front side airbags and head airbag system
- Anti-lock braking system (ABS) (with electronic brake force distribution (EBD) and brake assist)
- Audi connect Emergency Call & Service with Audi connect Remote & Control (Audi connect Emergency Call: - Online breakdown call - Audi damage service - Audi service appointment online. The package includes the following services: - Parking position - Vehicle status - Remote locking and unlocking - Remote control of auxiliary heating - Anti-theft alarm notification)
- Exterior mirror housings in body color
- On-board tools (in the luggage compartment)
- third brake light, raised
- Black roof rails (for transport, stable and aerodynamically shaped, in aluminum)
- Diesel particulate filter (DPF)
- Door sill trims with aluminum inlay at the front
- Electronic Differential Lock (EDS)
- Electronic Stability Control (ESC)
- Driver Information System (with high-resolution 5" monochrome display - display content: speed, time, mileage, outside temperature, fuel warning with remaining range, gear shift indicator, current radio station or music track, radio and media lists, telephone menu (in conjunction with multifunction steering wheel), navigation information (if equipped). On-board computer with short- and long-term memory - including break recommendation)
- Front and rear floor mats (made of velour in black)
- Cruise control system including speed limiter (maintains the desired speed from approximately 20 km/h, provided the engine power or engine braking effect allows it; adjustable speed limiter allows individual limitation of the maximum speed, e.g. within built-up areas)
- Interior mirror dimming
- Child lock
- ISOFIX and Top Tether child seat attachments for the outer rear seats (standard mounting brackets for the convenient attachment of ISOFIX child seats - including an additional attachment point (Top Tether). Recommended child seats are available from your Audi dealer.)
- boot floor mat
- Headrests (5) (height adjustable front and rear)
- Manual cargo cover
- LED rear lights (indicator, brake, tail, reversing and rear license plate lights in LED technology. - Brake lights in LED technology enable earlier detection by following traffic due to faster activation)
- Steering wheel: Leather steering wheel in a 3-spoke design with multifunction controls (height and reach of the steering wheel are manually adjustable. For convenient operation of the extensive standard and optional infotainment features, the steering wheel is equipped with 6 multifunction buttons.)



- front center armrest
- Non-smoking version (one 12-volt socket each in the front in front of the cup holders and in the rear for the 2nd row of seats - no cigarette lighter)
- Wheel: Alloy wheels, 5-arm dynamic (size 7.5J x 17 with tires 225/50 R17)
- Wheel: Low rolling resistance tires, speed-limited (maximum permissible speed 210 km/h)
- Radio accessories: 8 speakers (passive) front and rear
- Radio accessories: Digital radio reception (DAB) (in addition to the analog station offerings, reception of digitally broadcast radio stations according to the DAB standard. Display of program-related information (e.g., artist and title) as well as additional information in the form of a slideshow (e.g., album art and weather). A second DAB tuner with a second DAB antenna continuously searches for alternative reception frequencies of the selected station. The station list is updated simultaneously.)
- Tire repair kit (compressor and tire sealant, maximum permissible speed 80 km/h)
- Seat covers in Index fabric (seat center panels in Index fabric black or rock grey - seat side bolsters, headrests, center armrest in solid black or rock grey fabric)
- Seats: Folding rear seat backrest (split in a 40:20:40 ratio or fully foldable - center armrest - including lashing eyes, 4 in the luggage compartment, for securing luggage and objects - attachment points for the luggage compartment net, with removable partition net; to be attached to the body or to the folded rear seat backrest; helpful whether the rear seat backrest is upright, folded down on one side, or folded down on both sides)
- First aid kit with warning triangle (warning triangle in the trunk - first aid kit in the trunk - 2 high-visibility vests in the door pockets)
- Glazing: Green tinted heat-insulating glazing (for rear window, door and side windows - rear window heated, with timer)
- Mild hybrid (enables the integration of hybrid functions into conventional TFSI and TDI engines. A belt-driven starter generator (BSG) and an additional lithium-ion battery enable fuel consumption reduction/CO2 savings through increased recuperation and by switching off the combustion engine while driving below 160 km/h (coasting, only in conjunction with automatic transmissions.)
- Radio: MMI Radio plus (10.1" color display (1,540 × 720) including MMI touch operation - driver information system with 5" mono display - Bluetooth interface (hands-free calling and audio streaming) - Audi music interface with 1 USB-A and 1 USB-C port, each with data and charging function - passive speakers - AM/FM phase diversity - speed-dependent volume adjustment - voice control system with natural language for controlling infotainment and vehicle functions - WLAN hardware)
- Tire pressure monitoring system (visual and audible warning in case of pressure loss in one or more wheels, display in the driver information system)
- Electromechanical power steering (maintenance-free rack and pinion steering with speed-dependent steering assistance; precise steering feel at high speeds, excellent support when parking.)
- Seats: Standard front seats (with manual adjustment of seat height, seat longitudinal position, backrest angle, headrest height and seat belt height)
- Seats: Front seats manually adjustable
- Start-stop system (helps reduce fuel consumption and CO2 emissions by switching off the engine during stationary phases, e.g. at traffic lights. For restarting, the starting process is initiated as soon as the foot brake is released. Can be deactivated at any time via a button.)
- Glazing: Windscreen in acoustic glazing (heat-insulating glazing with improved acoustic insulation value of the windscreen)
- Electronic immobilizer
- Reversible loading floor
- Central locking "Keyless-Go" without safe locking (keyless engine start)



Extra equipment

- Business Package (MMI Navigation plus with MMI touch (including driver information system with color display) - Audi phone box - Leather steering wheel in 3-spoke design with multifunction plus - Heated front seats - Automatically dimming, frameless interior mirror - Electrically adjustable, heated and folding exterior mirrors, automatically dimming on both sides - Rear parking aid - High-beam assistant - Manual sunshade for the rear door windows)
- Radio accessories: Audi sound system (10 speakers including center speaker and subwoofer - 6-channel amplifier - total output of 180 watts)
- Swiveling towbar (ball head mechanically swiveling with electric release - ball rod and head made of forged steel - operation via push button in the luggage compartment - including trailer stabilization via the electronic stability control (ESC) - the integrated swiveling system socket allows continuous operation of electrical devices in the trailer or caravan while driving)
- Telephone: Audi smartphone interface in conjunction with MMI Navigation plus with MMI touch (The Audi smartphone interface (Android Auto and Apple CarPlay) connects your smartphone to your Audi and seamlessly displays your smartphone content directly on the MMI display via USB. Navigation, telephony, music and selected third-party apps can be conveniently controlled via the MMI touchscreen as well as via voice control of your smartphone.)
- Assistance package Tour in conjunction with package Business (adaptive cruise control incl. Stop&Go function - traffic jam assistant - predictive efficiency assistant - Audi pre sense city (standard) - Audi pre sense front - swerve assistant - left turn assistant - camera-based traffic sign recognition - high beam assistant - Audi active lane assist)
- Front sports seats (with manual adjustment of seat height, seat longitudinal position, seat tilt, backrest tilt, headrest and belt height; with pronounced seat side bolsters for better lateral support in curves, extendable thigh support)
- Paint finish: Metallic
- Parking assistant including parking aid plus (automatic steering during parking. Ultrasonic sensors search for suitable parallel or perpendicular parking spaces. For perpendicular spaces, the ideal parking path is calculated; for parallel spaces, the ideal entry and exit paths are calculated. The driver must accelerate, shift gears, and brake, as well as monitor the parking process. The system takes over the steering. The surround view warns of obstacles in front of and behind, and, depending on the steering angle, also of obstacles to the side.)
- Radio accessories: Adapter cable for Audi music interface (Apple-Lightning)

Brief expert findings

Documents submitted	At the time of the inspection, the vehicle registration certificate Part 2 (title) was available, but the vehicle registration certificate Part 1 (document) was not. (Copy)
VIN comparison	The vehicle identification number (VIN) was read from the vehicle and its conformity with the submitted documents was confirmed by the undersigned during the inspection.
Inspection	The inspection conditions were sufficient for the assessment of the vehicle. No lifting equipment or pit was available for inspecting the vehicle. Therefore, inspection of the vehicle's underside was only possible to a limited extent.
Test drive	No test drive/shunting maneuver was carried out during the inspection of the vehicle.
Engine function test	An engine test run was performed.
readiness to drive	The vehicle was roadworthy at the time of inspection.



Value reducing factors

No.	Component group	Description
1	Equipment	Tirefit filler - Expired - Replace
2	Side panel - rear left side	Side panel - dent(s) - Smooth repair work
3	Door - rear left side	Door - dent(s) - Smooth repair work
4	Trim / covers	Roof lining - Scratch(es) - Smart repair
5	Door - front left side	Door - Scratch(es) - Smart repair
6	Mudguard - right side	Mudguard - right side - Scratch(es) - Smart repair
7	Door - rear right side	Door - Dent / paintcoat damage - Smart repair
8	Trim / covers	Trim / covers - Broken / torn - Replace
9	Headlight	Headlight - right side - Scratch(es) - Loss in value
10	Door - front right side	Door handle - outside - Scratch(es) - Paint
11	Wheel / tyres	Alloy rim - rear right side - Scratch(es) - Replace
12	Wheel / tyres	Alloy rim - front left side - Scratch(es) - Replace
13	Wheel / tyres	Alloy rim - front right side - Scratch(es) - Replace
14	Front bumper	Front bumper - Dent / paintcoat damage - Repair and paint
15	Front structure	Grille - Broken / torn - Replace
16	Side panel - rear right side	Side panel - Dent / paintcoat damage - Repair and paint
17	Bonnet	Bonnet - Scratch(es) - Paint
18	Rear bumper	Rear bumper (Inklusive anbauteile) - Dent / paintcoat damage - Replace

Wear and tear

No.	Component group	Description
1	Side panel - rear right side	Sill - Dent / paintcoat damage - No deduction
2	Side panel - rear left side	Sill - Scratch(es) - No deduction
3	Trim / covers	Boot lid - interior trim - Scratch(es) - No deduction
4	2nd wheel set	Tyres - complete set - Worn - No deduction
5	2nd wheel set	2 alloy rims - Scratch(es) - No deduction
6	Vehicle glazing	Windscreen - Stone chips - No deduction
7	Roof	Roof - Stone chips - No deduction

The vehicle shows signs of wear and tear commensurate with its age and use.

Previous damages

No.	Previous damage	Extent of damage (Net)
1	Side - left, Provided by user / customer, from 23 Dec 2023	2.184,41 €



Order/Scope of Order

An order was placed to prepare a sales report for the described vehicle. This report includes the following:

- Description of key vehicle information
- Documentation of equipment features
(Delivery by third-party service providers)
- Documentation of damage, defects, missing parts
- Documentation of prior damage, unrepaired prior damage, repainting
- A brief visual or functional inspection of the equipment details, if possible.
(Functional testing of driver assistance systems is not included in the scope of services!)
- a photographic documentation of the vehicle

Basis for the order

This product is based on the guidelines for vehicle returns and valuations published by Alphabet Fleet GmbH. The expert makes the specific findings in each individual case objectively, within the framework of the prescribed standards, based on their own expertise.

The vehicle inspection takes place in a fully assembled, unassembled state.

Damage or defects that can only be detected during disassembly/diagnostic work or through further investigation remain within the realm of prognostic risk. An increased risk exists due to concealed defects caused by fraudulent misrepresentation and which were not identifiable by the expert.

Damage or defects resulting from normal use or wear and tear of the vehicle will be accepted in accordance with the applicable standard.

There was no explicit identification or monetary consideration of the expected features within the product.

Features which, in their nature and extent, slightly exceed normal use but do not constitute unacceptable damage, will be documented and indicated as signs of wear, if applicable.

Damage or defects that, according to the applicable standard, can no longer be attributed to normal use or wear and tear are listed under "Value Reducing Factors" in the product description.

Depending on the product specification, a monetary ID can be provided. If this takes place, the costs can be 100% or pro rata depending on the vehicle's age and mileage.

Previous damages

According to available information previous damages were repaired at the vehicle. Traces of repairs, which allow conclusions about the area of repair, were not recognizable during the inspection.

Comments

- Winterradsatz ist kein Bestandteil des Auslieferungsumfangs.



Figure 1: Diagonal front (left)



Figure 2: Diagonal front (right)



Figure 3: Diagonal rear (left)



Figure 4: Diagonal rear (right)



Figure 5: Interior - front



Figure 6: Interior - rear



Figure 7: Instrument cluster



Figure 8: Instrument panel



Figure 9: Interior 360° view



Figure 10: Cargo area

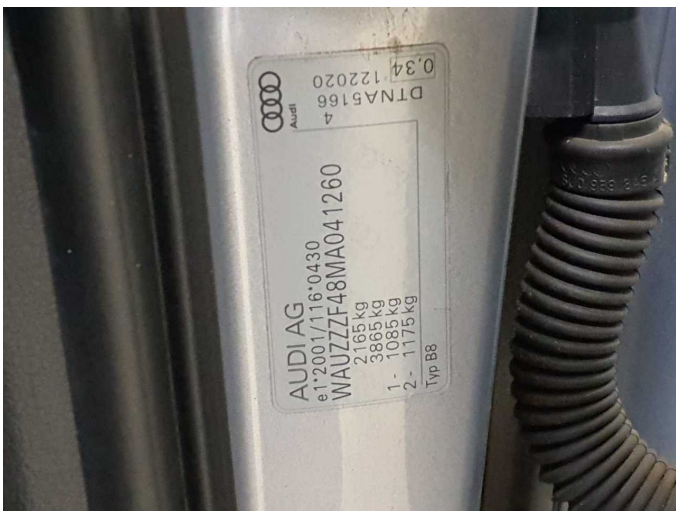


Figure 11: VIN



Figure 12: Mounted tyres



Figure 13: Documents



Figure 14: Additional tyres



Figure 15: Additional tyres



Figure 16: Additional tyres



Figure 17: Navigation



Figure 18: Misc.



Figure 19: Misc.



Figure 20: Misc.

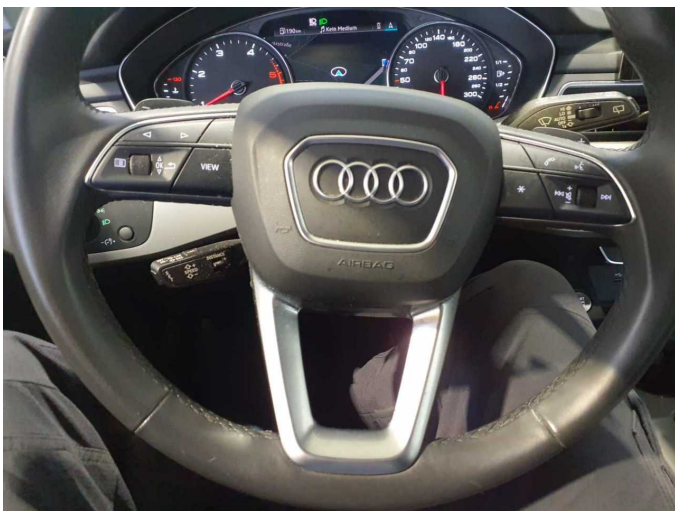


Figure 21: Misc.

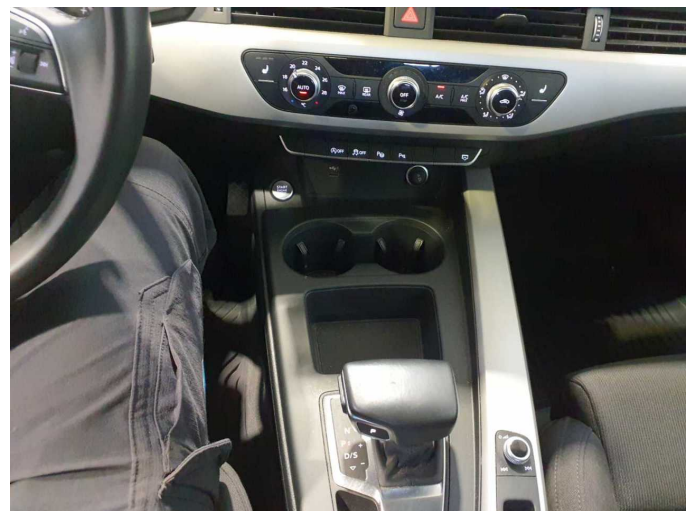


Figure 22: Misc.



Figure 23: Misc.



Figure 24: Misc.



Figure 25: Misc.



Figure 26: Misc.



Figure 27: Misc.



Figure 28: Misc.



Figure 29: Misc.



Damage 1: Equipment: Tirefit filler - Expired - Replace



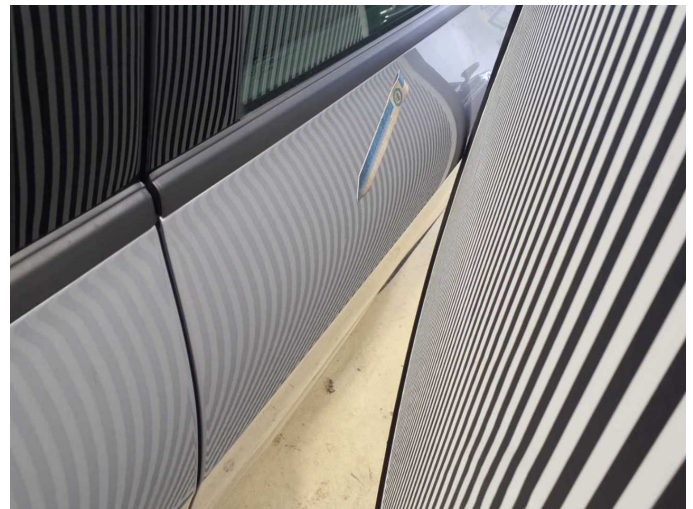
Damage 2: Side panel - rear left side: Side panel - dent(s) - Smooth repair work



Damage 2: Side panel - rear left side: Side panel - dent(s) - Smooth repair work



Damage 3: Door - rear left side: Door - dent(s) - Smooth repair work



Damage 3: Door - rear left side: Door - dent(s) - Smooth repair work



Damage 4: Trim / covers: Roof lining - Scratch(es) - Smart repair



Damage 4: Trim / covers: Roof lining - Scratch(es) - Smart repair



Damage 4: Trim / covers: Roof lining - Scratch(es) - Smart repair



Damage 5: Door - front left side: Door - Scratch(es) - Smart repair



Damage 5: Door - front left side: Door - Scratch(es) - Smart repair



Damage 6: Mudguard - right side: Mudguard - right side - Scratch(es) - Smart repair



Damage 6: Mudguard - right side: Mudguard - right side - Scratch(es) - Smart repair



Damage 7: Door - rear right side: Door - Dent / paintcoat damage - Smart repair



Damage 7: Door - rear right side: Door - Dent / paintcoat damage - Smart repair



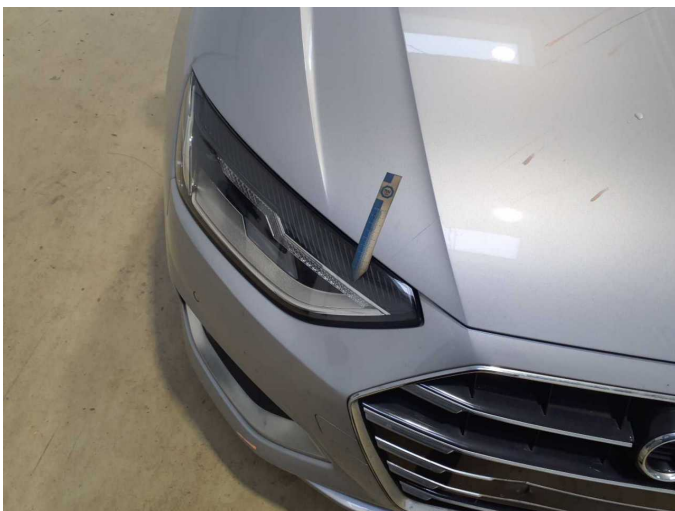
Damage 7: Door - rear right side: Door - Dent / paintcoat damage - Smart repair



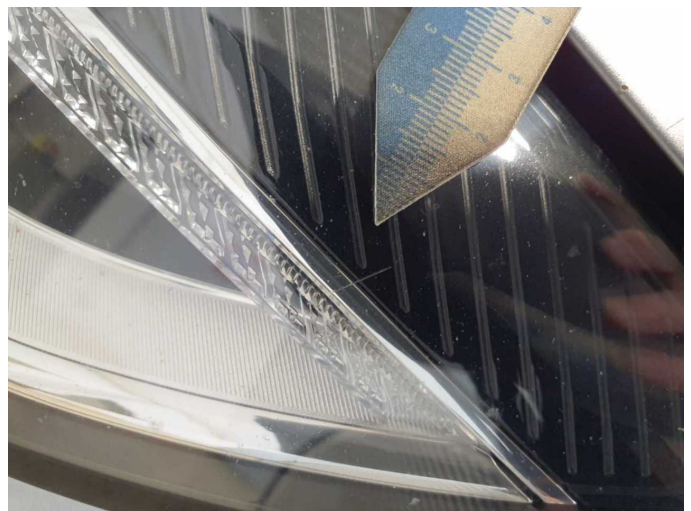
Damage 8: Trim / covers: Trim / covers - Broken / torn - Replace



Damage 8: Trim / covers: Trim / covers - Broken / torn - Replace



Damage 9: Headlight: Headlight - right side - Scratch(es) - Loss in value



Damage 9: Headlight: Headlight - right side - Scratch(es) - Loss in value



Damage 10: Door - front right side: Door handle - outside - Scratch(es) - Paint



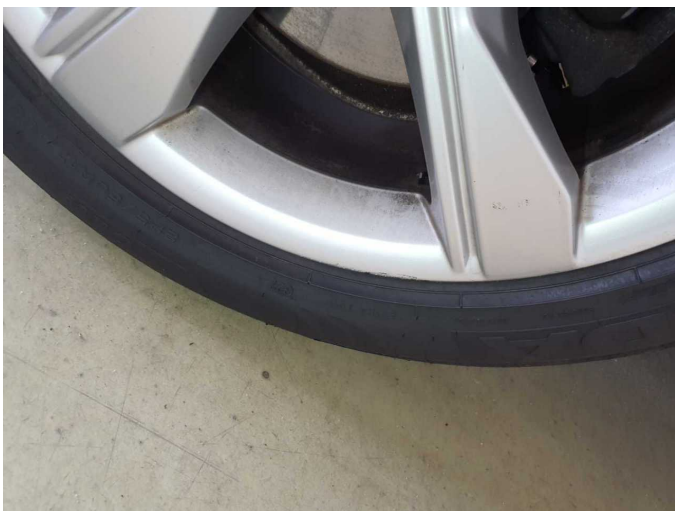
Damage 10: Door - front right side: Door handle - outside - Scratch(es) - Paint



Damage 11: Wheel / tyres: Alloy rim - rear right side - Scratch(es) - Replace



Damage 11: Wheel / tyres: Alloy rim - rear right side - Scratch(es) - Replace



Damage 11: Wheel / tyres: Alloy rim - rear right side - Scratch(es) - Replace



Damage 12: Wheel / tyres: Alloy rim - front left side - Scratch(es) - Replace



Damage 12: Wheel / tyres: Alloy rim - front left side - Scratch(es) - Replace



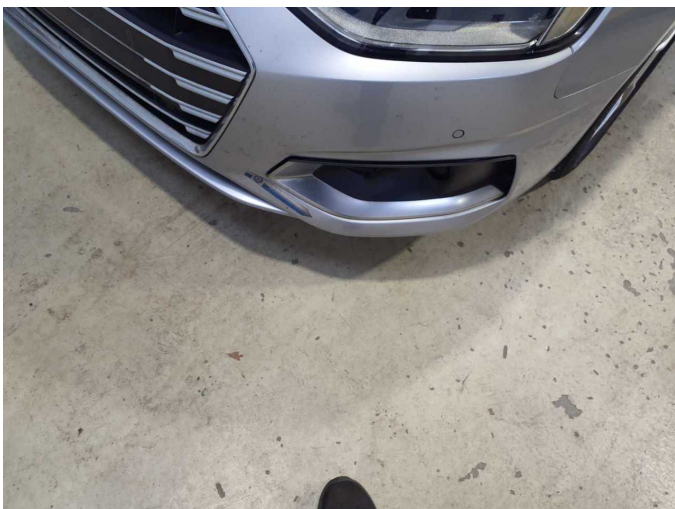
Damage 12: Wheel / tyres: Alloy rim - front left side - Scratch(es) - Replace



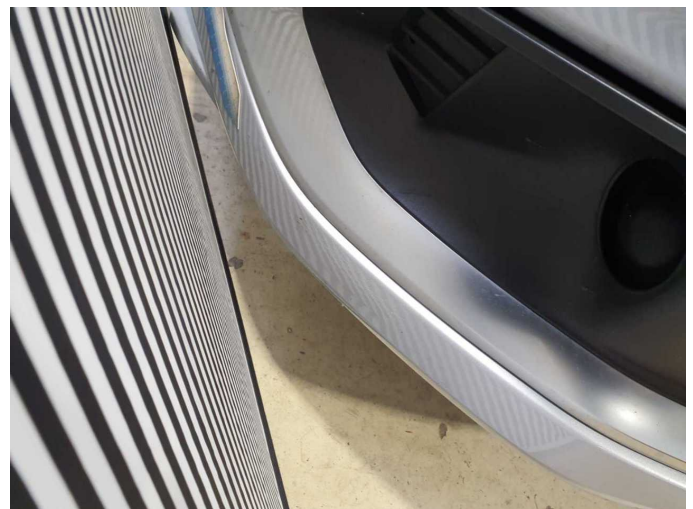
Damage 13: Wheel / tyres: Alloy rim - front right side - Scratch(es) - Replace



Damage 13: Wheel / tyres: Alloy rim - front right side - Scratch(es) - Replace



Damage 14: Front bumper: Front bumper - Dent / paintcoat damage - Repair and paint



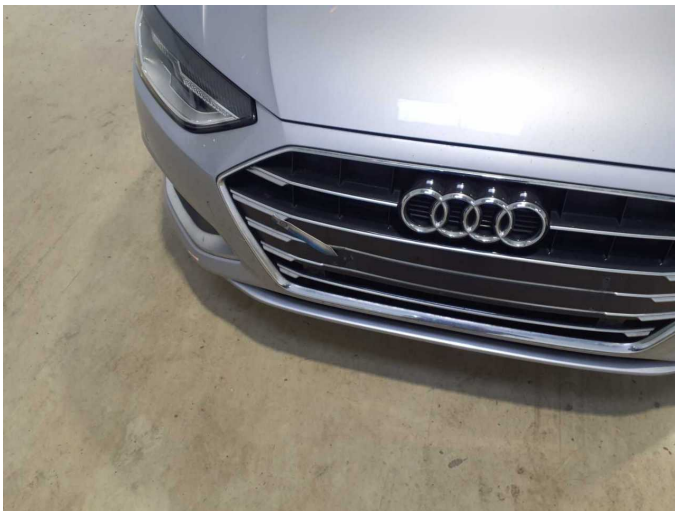
Damage 14: Front bumper: Front bumper - Dent / paintcoat damage - Repair and paint



Damage 14: Front bumper: Front bumper - Dent / paintcoat damage - Repair and paint



Damage 14: Front bumper: Front bumper - Dent / paintcoat damage - Repair and paint



Damage 15: Front structure: Grille - Broken / torn - Replace



Damage 15: Front structure: Grille - Broken / torn - Replace



Damage 16: Side panel - rear right side: Side panel - Dent / paintcoat damage - Repair and paint



Damage 16: Side panel - rear right side: Side panel - Dent / paintcoat damage - Repair and paint



Damage 16: Side panel - rear right side: Side panel - Dent / paintcoat damage - Repair and paint



Damage 16: Side panel - rear right side: Side panel - Dent / paintcoat damage - Repair and paint



Damage 16: Side panel - rear right side: Side panel - Dent / paintcoat damage - Repair and paint



Damage 17: Bonnet: Bonnet - Scratch(es) - Paint



Damage 17: Bonnet: Bonnet - Scratch(es) - Paint



Damage 17: Bonnet: Bonnet - Scratch(es) - Paint



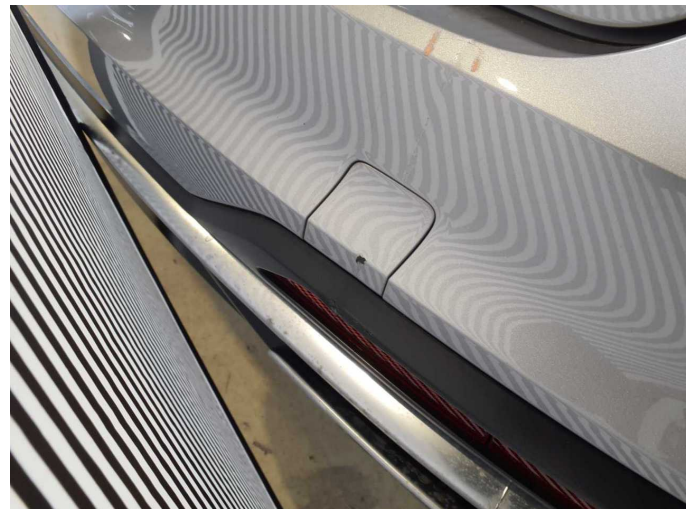
Damage 18: Rear bumper: Rear bumper (Inklusive anbauteile) - Dent / paintcoat damage - Replace



Damage 18: Rear bumper: Rear bumper (Inklusive anbauteile) - Dent / paintcoat damage - Replace



Damage 18: Rear bumper: Rear bumper (Inklusive anbauteile) - Dent / paintcoat damage - Replace



Damage 18: Rear bumper: Rear bumper (Inklusive anbauteile) - Dent / paintcoat damage - Replace



Damage 18: Rear bumper: Rear bumper (Inklusive anbauteile) - Dent / paintcoat damage - Replace



Damage 18: Rear bumper: Rear bumper (Inklusive anbauteile) - Dent / paintcoat damage - Replace



Wear and tear 3: Trim / covers: Boot lid - interior trim - Scratch(es) - No deduction



Wear and tear 3: Trim / covers: Boot lid - interior trim - Scratch(es) - No deduction